

**Hotel Tourism Short-Term Trends (HOS/HPI/ADR/REVPAR)**  
September 2011. *Provisional data*

**Overnight stays in hotel establishments increase 8.4%\* in August, as compared with the same month in 2010**

**Hotels earn 46.9 euros per available room and invoice an average of 70.2 euros per occupied room**

During the month of September, 32.2 million overnight stays were recorded in hotel establishments, indicating a 8.4% increase, as compared with the same month in 2010. This increase in overnight stays took place for both residents, whose interannual rate stood at 1.6%, and non-residents, with an interannual variation of 12.4%.

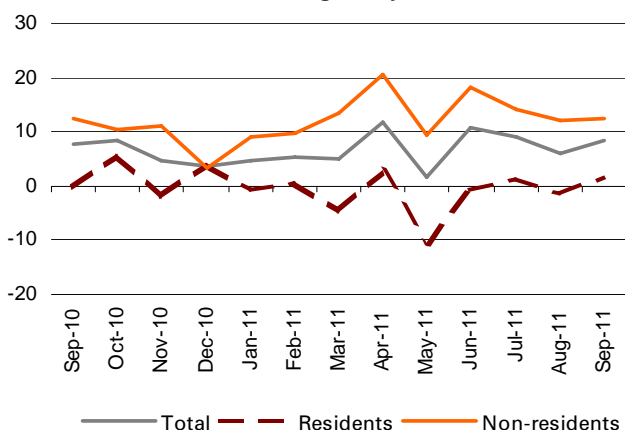
The average stay increased 2.0%, as compared with September 2010, standing at 3.6 nights per guest.

During the first nine months of the year, overnight stays increased 7.3%, as compared with the same period the previous year.

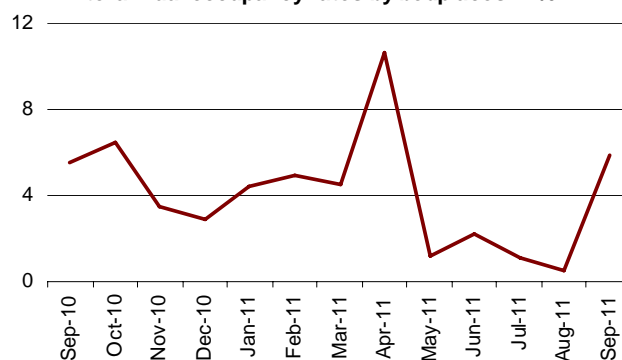
In turn, **the Hotel Price Index (HPI) registered a 1.2% increase**, this rate being 2.3 points higher than that registered in September 2010. Regarding the indicators on the profitability of the hotel sector, invoicing per occupied room reached an average value of 70.2 euros (1.7 euros more than one year ago), and income per available room stood at 46.9 euros (3.9 euros more).

61.8% of the available bed places were filled in September, indicating an 5.9% increase as compared with the same month the previous year. The weekend occupancy rate by bed places stood at 66.7%, with an increase of 3.5%.

Interannual rates of overnight stays in %



Interannual occupancy rates by bedplaces in %



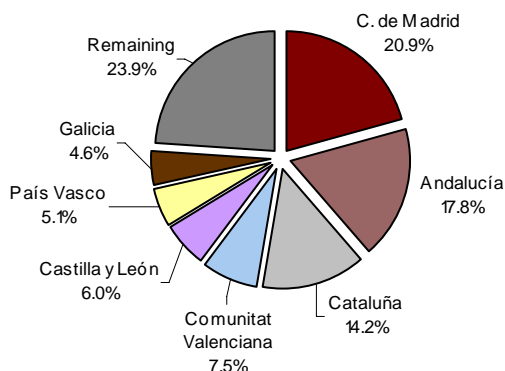
\* Due to the update made in the in the directory of hotel establishments in Comunidad Foral de Navarra and Extremadura, the data published for those Communities and the national total cannot be directly compared. To bridge this gap in the series, some linking coefficients have been calculated to allow users to compare data from different years. The coefficients are published monthly on the INE website in the section dedicated to this statistical operation, in a specific section entitled linking coefficients.

### Overnight stays of guests resident abroad

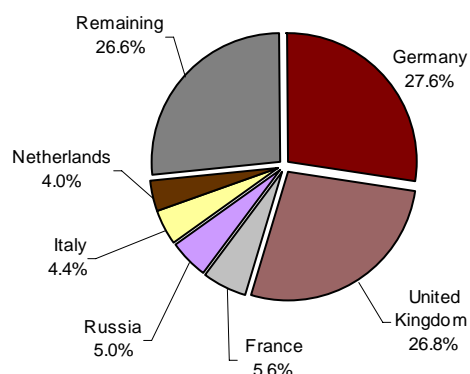
Guests from Germany and the United Kingdom made more than 11.4 million overnight stays in September. The German market experienced an interannual increase of 6.8%, while the British market grew 10.0%.

Overnight stays of guests from France, Russia and Italy (the following countries of origin) presented interannual rates of 12.4%, 58.2% and 14.6% respectively.

**Overnight stays of guests resident in Spain by Autonomous Community of origin in %**



**Overnight stays of guests resident abroad by country of origin in %**

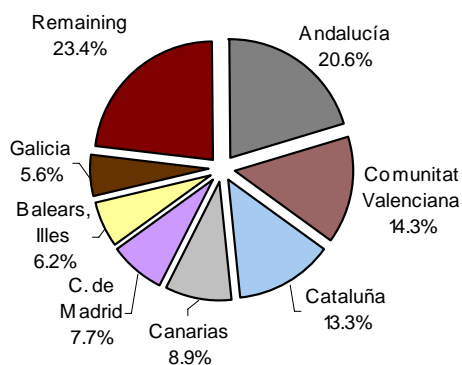


### Main destinations

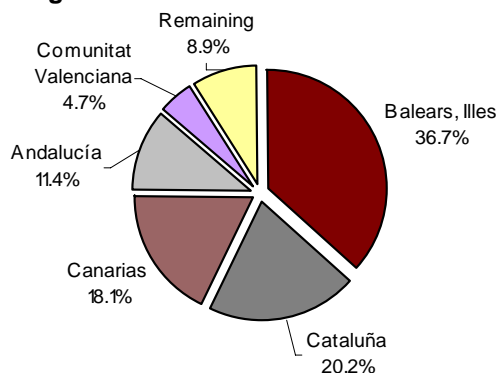
The main destination chosen by non-residents was Illes Balears. In this Autonomous Community, overnight stays by foreign nationals grew 13.2%. It was followed by Cataluña, with an interannual rate of 10.7%, and Canarias, with an increase of 15.6%.

Andalucía, Comunitat Valenciana and Cataluña were the main destinations of guests resident in Spain, with interannual rates for overnight stays of -4.4%, 7.2% and 8.4%, respectively.

**Distribution of overnight stays of guests resident in Spain in %**



**Distribution of overnight stays of guests resident abroad in %**



## Results by Autonomous Community, tourist area and tourist site

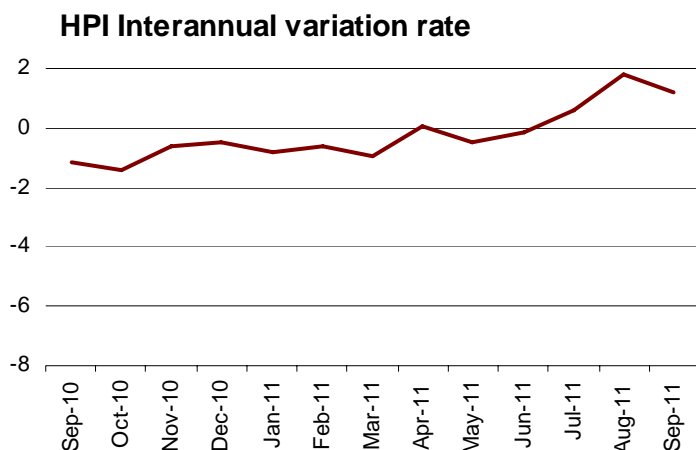
Illes Balears was the Autonomous Community with the highest occupancy rate by bed places during the month of September (81.7%). It was followed by Canarias (71.4%) and Cataluña (64.1%).

The tourist areas with the highest occupancy and overnight stay rates were located on the islands and the coasts. Mallorca recorded the highest occupancy rate by bedplaces (83.9%), the highest weekend occupancy rate by bed places (83.8%) and registered more than 6.2 million overnight stays in September.

The tourist sites with the highest number of overnight stays were Barcelona, Madrid and Calviá. Santa Margalida reached the highest occupancy rate by bedplaces (90.5%), and the highest weekend occupancy (92.9%).

## Evolution of the Hotel Price Index

The interannual rate of the HPI stood at 1.2% in September, this rate being 0.6 points higher than that obtained last month, and 2.3 points higher than that registered one year ago.



## HPI by Autonomous Community

The four Autonomous Communities (Illes Balears, Cataluña, Andalucía and Canarias) that carried 69.8% of the total weight of the HPI in the month of September, showed uneven behaviour as compared with August 2011.

Illes Balears, which carried the greatest load in the weighting structure this month, presented an interannual rate of 2.8%, that is 2.1 points lower than that estimated in August. Hotel prices recorded a variation of 3.8% in Cataluña, as compared with the 2.3% recorded the previous month. Andalucía showed an interannual rate of -0.3%, as compared with the -1.0% observed last month. In Canarias, the variation was 3.5%, indicating 0.8 points more than in August.

### HPI by category

Hotel prices decreased in September in three-silver-star and in three and two-silver-star (both with 4.0%), and two -gold-star hotels (0.5%).

The HPI increased in one-gold-star hotels (2.6%), in four-gold-star hotels (1.7%), in five-gold-star hotels (1.5%), in three-gold-star hotels (1.1%) and one-silver-star hotels (0.4%).

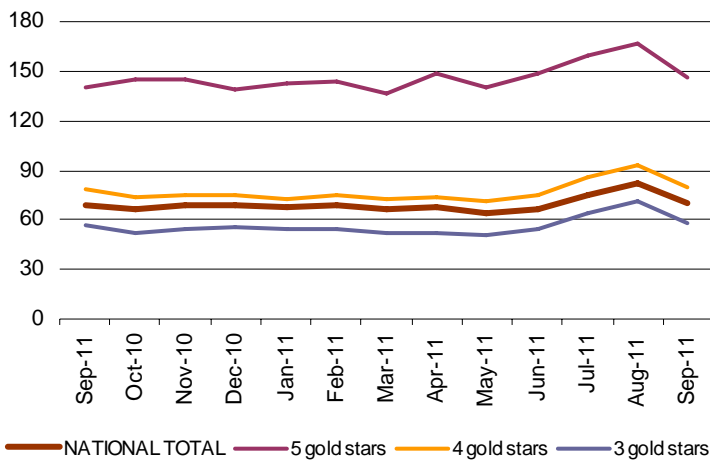
### Indicators on the Profitability of the Hotel Sector

The average invoicing by hotels per occupied room (ADR) in September was 70.2 euros, indicating an increase of 1.7 euros as compared with the same month in 2010.

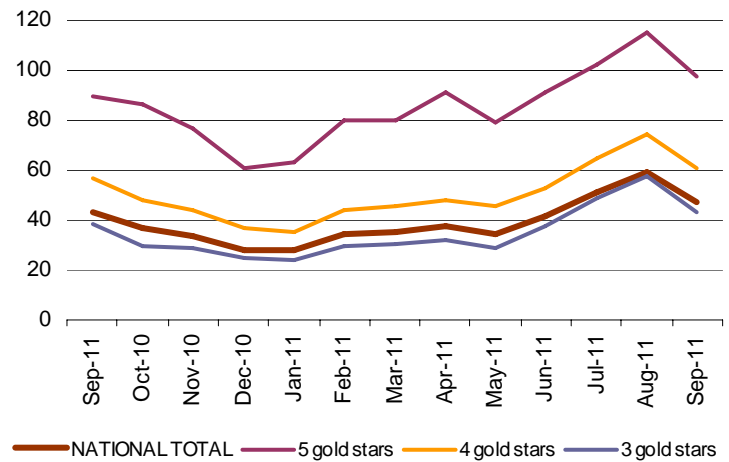
In turn, income per available room (RevPAR), conditioned by the occupancy registered in the hotel establishments, reached 46.9 euros, with an increase of 3.9 euros.

By category, the average invoicing was 145.6 euros for five-star hotels, 79.8 euros for four-star hotels and 58.3 euros for three-star hotels. Income per available room for these same categories was 97.8, 60.9 and 43.0 euros, respectively.

**ADR**



**RevPAR**



For further information see [INEbase-www.ine.es/en/welcome\\_en.htm](http://INEbase-www.ine.es/en/welcome_en.htm) All press releases at: [www.ine.es/en/prensa/prensa\\_en.htm](http://www.ine.es/en/prensa/prensa_en.htm)

**Press Office:** Telephone numbers: 91 583 93 63 / 94 08 – Fax: 91 583 90 87 - [gprensa@ine.es](mailto:gprensa@ine.es)

**Information Area:** Telephone number: 91 583 91 00 – Fax: 91 583 91 58 – [www.ine.es/infoine/?L=1](http://www.ine.es/infoine/?L=1)

## Tourist Accommodation Occupancy Survey (Hotels and similar establishments)

September 2011

Provisional data

### 1. Travellers, overnight stays and average stay by categories of establishment

Category	Number of travellers			Number of overnight stays			Average stay
	Total	Residents in Spain	Residents abroad	Total	Residents in Spain	Residents abroad	
<b>TOTAL</b>	<b>8,919,170</b>	<b>4,405,447</b>	<b>4,513,723</b>	<b>32,203,965</b>	<b>11,131,921</b>	<b>21,072,044</b>	<b>3.61</b>
HOTELS: Golden stars							
Five	483,489	188,079	295,410	1,503,561	425,331	1,078,230	3.11
Four	3,794,881	1,849,236	1,945,645	13,864,258	4,703,949	9,160,309	3.65
Three	2,838,979	1,284,453	1,554,527	11,928,700	3,533,549	8,395,151	4.20
Two	735,585	427,670	307,915	2,206,086	1,036,661	1,169,425	3.00
One	262,423	162,016	100,407	683,257	350,612	332,645	2.60
INNS: Silver stars							
Two and three	437,810	274,640	163,170	1,130,088	581,920	548,169	2.58
One	366,002	219,352	146,650	888,016	499,899	388,116	2.43
Interannual rate	6.04	2.04	10.26	8.37	1.55	12.36	2.00
Cumulative interannual rate	5.04	-0.32	11.82	7.29	-1.19	13.48	2.14

### 2. Open establishments, capacity, occupancy and employed personnel by categories of establishment

Category	Estimated open establishments	Estimated bedplaces	Level of occupancy			Employed personnel
			Per bedplaces	Per bedplaces at weekend	Per rooms	
<b>TOTAL</b>	<b>16,563</b>	<b>1,707,037</b>	<b>61.75</b>	<b>66.72</b>	<b>66.88</b>	<b>236,250</b>
HOTELS: Golden stars						
Five	267	85,799	58.11	64.71	67.30	25,597
Four	2,164	657,538	69.01	74.33	76.47	103,633
Three	2,973	558,841	69.51	73.67	73.87	69,709
Two	2,123	143,533	50.46	57.50	54.76	14,127
One	1,346	59,934	37.69	43.02	42.08	5,373
INNS: Silver stars						
Two and three	3,336	108,981	34.38	38.99	38.91	10,051
One	4,354	92,411	31.90	34.81	35.90	7,760
Interannual rate	0.36	2.02	5.90	3.46	6.60	3.05

### 3. Travellers, overnight stays, occupancy, average stay and employed personnel

Results by areas and tourist sites

	Travellers		Overnight stays		Level of occupancy			Average stay	Employed personnel
	Residents in Spain	Residents abroad	Residents in Spain	Residents abroad	Per bedplac	Per bedplaces	Per rooms at weekend		

#### Tourist areas with a greater level of occupancy per month

Isla de Mallorca	79,023	799,429	342,185	5,938,267	83.85	83.78	86.50	7.15	33,809
Islas de Ibiza-Formentera	48,650	201,982	200,977	1,295,675	78.33	82.09	83.18	5.97	8,176
Costa Barcelona-Maresme	28,262	107,366	92,301	722,896	77.49	75.38	78.20	6.01	3,224
Costa Blanca	183,392	143,848	821,672	736,503	75.96	82.06	77.76	4.76	9,091
Isla de Lanzarote	37,147	61,812	236,050	516,221	75.29	74.62	80.80	7.60	5,226
Barcelona	136,456	511,599	269,806	1,314,761	74.08	77.26	85.56	2.45	12,505
Isla de Fuerteventura	16,504	98,250	81,145	907,952	73.95	77.61	85.35	8.62	7,184
Costa Daurada	128,159	138,941	448,574	918,564	72.77	78.48	79.67	5.12	6,694

#### Tourist areas with a greater number of overnight stays per month \*

Isla de Tenerife	90,917	162,869	406,627	1,394,027	72.29	72.48	76.68	7.10	14,832
Costa del Sol	170,956	251,421	513,442	1,223,093	70.27	76.34	77.30	4.11	12,599
Costa Brava	125,314	225,094	300,011	1,017,903	59.17	66.33	63.09	3.76	8,295
Isla de Gran Canaria	53,510	107,444	223,767	953,674	68.42	73.20	78.67	7.32	9,715
Costa de la Luz de Cádiz	122,790	76,473	366,450	332,129	57.49	62.67	65.34	3.51	5,906
Isla de Menorca	24,260	54,216	146,423	498,574	70.58	70.48	76.14	8.22	3,417
Costa de Almería	97,013	20,134	357,729	117,383	46.55	49.15	52.57	4.06	2,879
Costa de la Luz de Huelva	98,633	18,523	337,650	104,669	56.61	72.66	66.63	3.78	3,904

#### Tourist sites with a greater level of occupancy per month

Santa Margalida	3,952	45,595	24,539	364,179	90.45	92.91	95.76	7.85	1,805
Benidorm	84,219	85,321	532,501	541,832	89.49	89.56	87.22	6.34	5,491
Alcúdia	1,953	60,770	7,813	520,141	88.93	85.43	85.96	8.42	2,473
Muro	1,978	54,533	10,984	445,729	88.89	81.33	92.81	8.08	2,229
Son Servera	418	28,459	1,156	225,845	87.74	86.19	88.49	7.86	1,091
Santanyí	2,027	39,906	5,154	295,586	85.27	81.93	86.59	7.17	1,358
Calvià	9,010	159,945	57,542	1,228,509	84.25	83.48	83.88	7.61	6,929
Sant Josep de Sa Talaia	6,687	43,410	31,172	280,092	83.45	79.84	89.73	6.21	1,692
Capdepera	5,809	45,596	38,960	374,755	83.24	84.57	92.52	8.05	1,935
Eivissa	17,169	44,147	69,391	218,692	82.87	88.52	84.89	4.70	1,953

#### Tourist sites with a greater number of overnight stays per month \*

Barcelona	128,285	496,652	246,468	1,275,906	74.35	77.32	85.40	2.44	12,157
Madrid	362,748	398,135	624,610	876,077	62.36	69.18	75.31	1.97	12,183
Palma	41,272	188,932	102,015	916,019	81.56	87.31	89.77	4.42	6,467
Salou	45,011	96,765	205,794	666,459	82.58	87.12	91.07	6.15	3,318
San Bartolomé de Tirajana	29,428	78,125	143,262	721,990	73.38	77.88	83.50	8.04	7,153
Adeje	24,063	74,144	119,197	655,542	77.92	77.74	84.39	7.89	6,333
Lloret de Mar	17,939	106,034	69,637	619,197	74.14	76.21	76.63	5.56	2,785
Pájara	6,016	67,121	39,995	641,591	79.38	84.02	87.81	9.32	5,238
Sant Llorenç des Cardassar	5,350	58,749	46,500	544,794	80.29	80.53	85.93	9.22	3,018
Torremolinos	46,409	58,624	144,903	346,270	78.85	82.66	83.17	4.68	2,793

\* Not taken into account those included in the preceding table because they are in the bigger level of occupancy tables too.

## 4. Travellers, overnight stays and average stay

### Results by Autonomous Cities and Communities and provinces

	Number of travellers			Overnight stays			Average stay
	Total	Residents in Spain	Residents abroad	Total	Residents in Spain	Residents abroad	
<b>TOTAL</b>	<b>8,919,170</b>	<b>4,405,447</b>	<b>4,513,723</b>	<b>32,203,965</b>	<b>11,131,921</b>	<b>21,072,044</b>	<b>3.61</b>
<b>Andalucía</b>	1,576,866	871,984	704,882	4,689,316	2,290,075	2,399,242	2.97
Almería	120,379	99,751	20,628	483,168	365,552	117,616	4.01
Cádiz	243,383	148,519	94,865	776,686	411,081	365,605	3.19
Córdoba	96,788	53,175	43,612	151,167	88,730	62,436	1.56
Granada	218,038	108,621	109,417	458,919	245,804	213,115	2.10
Huelva	132,571	111,196	21,375	468,161	357,951	110,210	3.53
Jaén	49,039	40,700	8,339	82,915	70,253	12,661	1.69
Málaga	471,925	195,440	276,485	1,824,708	554,645	1,270,064	3.87
Sevilla	244,744	114,582	130,162	443,592	196,059	247,534	1.81
<b>Aragón</b>	203,703	160,163	43,540	377,616	301,263	76,354	1.85
Huesca	58,467	45,190	13,278	119,385	94,164	25,221	2.04
Teruel	34,300	30,190	4,111	61,284	53,431	7,853	1.79
Zaragoza	110,935	84,783	26,152	196,948	153,668	43,280	1.78
<b>Asturias, Principado de</b>	172,644	143,981	28,663	368,159	313,636	54,523	2.13
<b>Balears, Illes</b>	1,207,560	151,933	1,055,627	8,422,101	689,586	7,732,516	6.97
<b>Canarias</b>	649,333	211,204	438,129	4,809,768	992,537	3,817,231	7.41
Palmas, Las	374,667	107,161	267,506	2,918,809	540,962	2,377,847	7.79
Santa Cruz de Tenerife	274,666	104,043	170,622	1,890,959	451,575	1,439,384	6.88
<b>Cantabria</b>	120,915	94,198	26,717	279,757	224,924	54,833	2.31
<b>Castilla y León</b>	438,844	331,479	107,365	725,516	566,829	158,687	1.65
Ávila	28,248	22,908	5,340	48,280	37,626	10,654	1.71
Burgos	76,536	48,584	27,952	117,226	80,850	36,376	1.53
León	76,973	56,841	20,133	117,839	90,440	27,399	1.53
Palencia	21,558	15,773	5,785	36,536	28,534	8,003	1.69
Salamanca	94,762	69,132	25,630	170,987	133,012	37,975	1.80
Segovia	40,797	32,564	8,232	67,249	53,233	14,016	1.65
Soria	18,990	17,510	1,481	33,156	30,699	2,457	1.75
Valladolid	57,983	48,576	9,407	98,473	81,928	16,544	1.70
Zamora	22,997	19,591	3,406	35,770	30,507	5,263	1.56
<b>Castilla-La Mancha</b>	185,882	151,390	34,491	327,696	270,388	57,308	1.76
Albacete	32,816	30,237	2,580	73,754	68,165	5,589	2.25
Ciudad Real	32,839	29,396	3,444	60,735	55,092	5,643	1.85
Cuenca	30,484	25,776	4,708	50,643	43,837	6,806	1.66
Guadalajara	23,975	20,433	3,542	39,451	33,581	5,871	1.65
Toledo	65,767	45,549	20,218	103,112	69,713	33,399	1.57
<b>Cataluña</b>	1,715,390	614,238	1,101,151	5,748,077	1,485,845	4,262,232	3.35
Barcelona	976,870	261,967	714,904	2,822,931	542,557	2,280,374	2.89
Girona	373,655	144,085	229,569	1,356,088	331,201	1,024,887	3.63
Lleida	70,841	58,862	11,979	135,366	111,632	23,733	1.91
Tarragona	294,024	149,324	144,700	1,433,693	500,455	933,238	4.88
<b>Comunitat Valenciana</b>	692,432	444,190	248,243	2,594,141	1,596,272	997,868	3.75
Alicante/Alacant	341,005	194,470	146,535	1,588,740	843,010	745,730	4.66
Castellón/Castelló	109,992	90,656	19,335	421,557	361,829	59,727	3.83
Valencia/València	241,436	159,064	82,372	583,845	391,433	192,412	2.42
<b>Extremadura</b>	123,970	103,556	20,414	218,812	190,211	28,601	1.77
Badajoz	66,440	54,667	11,773	112,368	96,524	15,843	1.69
Cáceres	57,530	48,889	8,641	106,444	93,687	12,758	1.85
<b>Galicia</b>	376,653	273,303	103,349	787,297	619,730	167,567	2.09
Coruña, A	167,177	109,155	58,022	314,085	218,355	95,730	1.88
Lugo	65,382	46,172	19,210	98,850	76,878	21,972	1.51
Ourense	29,127	26,177	2,950	54,769	48,771	5,998	1.88
Pontevedra	114,967	91,799	23,168	319,593	275,726	43,867	2.78
<b>Madrid, Comunidad de</b>	961,305	510,063	451,242	1,840,747	861,277	979,470	1.91
<b>Murcia, Región de</b>	99,110	81,385	17,725	264,042	215,065	48,977	2.66
<b>Navarra, Comunidad Foral de</b>	86,473	61,685	24,788	162,649	126,438	36,211	1.88
<b>País Vasco</b>	236,055	145,422	90,633	462,328	287,461	174,867	1.96
Araba/Álava	34,523	25,374	9,150	65,782	49,337	16,445	1.91
Bizkaia	107,701	66,101	41,601	205,962	127,422	78,540	1.91
Gipuzkoa	93,830	53,948	39,882	190,583	110,701	79,882	2.03
<b>Rioja, La</b>	59,743	45,653	14,090	99,990	78,480	21,510	1.67
<b>Ceuta</b>	6,998	5,283	1,715	13,004	10,428	2,576	1.86
<b>Melilla</b>	5,294	4,336	958	12,950	11,477	1,473	2.45

## 5. Establishment, capacity, occupancy and employed personnel

Results by Autonomous Cities and Communities and provinces

	Estimated open establishments	Estimated bedplaces	Level of occupancy			Employed personnel
			Per bedplaces	Per bedplaces at weekends	Per rooms	
<b>TOTAL</b>	<b>16,563</b>	<b>1,707,037</b>	<b>61.75</b>	<b>66.72</b>	<b>66.88</b>	<b>236,250</b>
<b>Andalucía</b>	2,554	277,947	55.56	62.50	62.01	38,592
Almería	195	35,646	44.71	47.05	49.63	3,272
Cádiz	462	47,577	53.77	58.91	60.89	7,002
Córdoba	202	10,797	46.32	55.06	53.12	1,403
Granada	432	30,084	50.48	59.10	54.64	3,795
Huelva	167	28,766	53.09	68.46	62.07	4,216
Jaén	189	9,380	29.36	36.75	32.46	1,233
Málaga	593	89,432	67.16	73.38	73.59	14,059
Sevilla	314	26,264	55.73	62.52	63.34	3,612
<b>Aragón</b>	832	39,619	31.60	41.63	36.41	4,459
Huesca	321	14,576	27.11	36.86	30.90	1,445
Teruel	223	7,192	28.19	42.61	31.39	847
Zaragoza	289	17,851	36.64	45.12	42.43	2,167
<b>Asturias, Principado de</b>	682	27,777	43.87	50.62	48.05	3,150
<b>Balears, Illes</b>	1,272	333,905	81.66	82.29	85.04	45,401
<b>Canarias</b>	515	221,805	71.41	73.51	78.73	37,914
Palmas, Las	262	133,669	71.93	75.00	81.32	22,125
Santa Cruz de Tenerife	254	88,136	70.63	71.24	74.93	15,789
<b>Cantabria</b>	456	20,679	44.79	50.07	46.56	2,808
<b>Castilla y León</b>	1,386	61,026	39.42	49.62	43.60	8,214
Ávila	101	4,879	32.78	47.18	34.74	640
Burgos	212	9,178	42.35	48.64	45.77	1,053
León	292	11,151	35.08	46.22	41.77	1,374
Palencia	91	3,309	36.61	42.23	42.61	381
Salamanca	215	11,301	50.06	61.16	53.03	1,582
Segovia	132	5,818	38.35	52.54	40.43	814
Soria	115	3,777	29.14	36.53	30.39	504
Valladolid	137	8,084	40.48	49.81	47.39	1,250
Zamora	92	3,528	33.62	45.01	37.43	616
<b>Castilla-La Mancha</b>	832	35,064	31.03	38.49	35.00	4,036
Albacete	160	7,152	34.31	42.81	39.27	901
Ciudad Real	194	7,761	26.02	30.18	31.10	898
Cuenca	164	5,899	28.52	33.70	29.45	650
Guadalajara	131	4,691	27.95	38.65	32.84	416
Toledo	184	9,561	35.70	44.86	39.39	1,172
<b>Cataluña</b>	2,426	292,938	64.07	69.17	70.54	37,381
Barcelona	1,053	133,776	69.53	71.78	78.24	19,474
Girona	703	77,566	57.18	65.01	60.89	8,969
Lleida	338	16,398	27.46	38.10	29.27	1,675
Tarragona	332	65,199	70.27	76.60	76.35	7,263
<b>Comunitat Valenciana</b>	1,082	131,990	63.76	69.90	65.75	17,221
Alicante/Alacant	485	70,802	72.77	78.70	73.93	9,522
Castellón/Castelló	212	23,568	57.54	61.15	56.56	3,027
Valencia/València	385	37,619	50.71	58.83	55.81	4,673
<b>Extremadura</b>	433	20,098	36.09	45.93	41.04	2,764
Badajoz	200	9,717	38.36	47.36	44.07	1,335
Cáceres	233	10,381	33.97	44.59	38.18	1,429
<b>Galicia</b>	1,707	71,026	36.74	41.78	40.49	8,787
Coruña, A	664	26,813	38.80	43.22	43.43	2,978
Lugo	322	9,897	33.17	36.67	36.67	1,227
Ourense	197	6,421	28.36	33.15	33.37	803
Pontevedra	524	27,895	37.94	44.21	40.67	3,779
<b>Madrid, Comunidad de</b>	1,164	104,557	58.28	66.13	69.52	15,107
<b>Murcia, Región de</b>	200	19,841	43.64	55.75	49.21	2,766
<b>Navarra, Comunidad Foral de</b>	325	13,266	40.69	45.74	48.07	1,893
<b>País Vasco</b>	520	27,361	55.94	64.59	66.55	4,509
Araba/Álava	78	4,413	49.16	59.81	59.19	618
Bizcaia	207	13,050	52.42	62.38	63.61	2,032
Gipuzkoa	236	9,898	63.61	69.62	73.60	1,859
<b>Rioja, La</b>	152	6,438	51.51	63.96	57.14	926
<b>Ceuta</b>	12	849	51.05	53.32	55.83	158
<b>Melilla</b>	11	851	50.71	45.79	63.61	162

## 6. Percentage distribution of Spanish travellers in each province by Autonomous City and Community of origin

Results by provinces

(Continued)

Provincias	Total	Andalucía	Aragón	Asturias, P. de	Balears, Illes	Canarias	Cantabria	Castilla y León	Castilla-La Mancha	Cataluña
<b>TOTAL</b>	<b>100</b>	<b>18.52</b>	<b>2.96</b>	<b>2.82</b>	<b>1.63</b>	<b>3.04</b>	<b>1.57</b>	<b>5.38</b>	<b>3.37</b>	<b>15.66</b>
Albacete	100	7.44	1.45	1.75	1.20	0.63	0.86	3.53	21.45	7.74
Alicante/Alacant	100	4.13	2.32	2.93	0.62	0.61	1.06	7.21	6.71	6.12
Almería	100	54.07	0.61	0.98	0.25	0.19	0.42	3.04	3.28	3.18
Araba/Álava	100	9.10	4.09	3.62	0.47	0.96	2.29	8.00	2.96	14.03
Asturias	100	7.35	1.38	12.24	0.75	2.84	3.71	11.96	3.61	7.45
Ávila	100	10.18	1.44	2.32	0.80	1.38	1.12	11.79	3.85	4.55
Badajoz	100	24.82	2.95	3.10	0.66	0.85	2.01	4.87	3.76	5.91
Balears, Illes	100	14.02	0.98	1.47	18.26	0.59	0.56	1.91	0.96	22.77
Barcelona	100	7.94	2.82	1.55	2.56	2.28	0.92	2.56	1.60	40.39
Bizkaia	100	5.78	2.81	3.53	1.25	2.40	1.96	6.74	1.45	13.68
Burgos	100	7.44	4.60	2.34	0.62	1.15	4.02	17.75	2.89	10.53
Cáceres	100	18.60	1.24	3.36	0.57	1.01	2.17	6.23	3.93	4.92
Cádiz	100	54.57	0.90	1.24	0.77	0.92	0.74	3.68	2.32	4.01
Cantabria	100	8.37	3.59	4.95	0.53	1.62	5.59	12.63	3.86	7.55
Castellón/Castelló	100	3.60	7.23	1.30	0.29	0.55	0.84	6.61	5.49	16.59
Ciudad Real	100	17.01	1.05	2.48	0.55	0.94	1.36	3.02	15.93	5.21
Córdoba	100	51.44	1.14	0.84	0.29	0.72	0.62	3.05	2.87	7.09
Coruña, A	100	8.22	1.58	4.57	0.85	2.23	1.66	6.00	2.93	9.17
Cuenca	100	13.35	2.76	1.44	1.17	0.70	1.30	4.04	13.83	5.44
Gipuzkoa	100	6.53	4.53	2.32	1.03	1.22	1.60	5.58	2.09	18.32
Girona	100	3.58	1.42	0.54	0.60	0.48	0.45	1.91	0.73	76.78
Granada	100	54.63	0.54	1.28	0.56	0.88	0.49	2.10	2.49	6.11
Guadalajara	100	6.84	3.17	0.99	0.48	0.65	3.24	3.45	24.08	12.85
Huelva	100	57.99	0.42	0.72	0.37	1.04	0.83	5.05	2.26	1.48
Huesca	100	7.81	22.16	1.55	1.11	0.88	0.80	2.01	1.84	28.63
Jaén	100	52.94	0.94	0.72	0.96	0.72	0.66	2.84	3.72	6.16
León	100	5.00	1.95	11.83	0.60	2.14	3.31	17.73	2.23	7.02
Lleida	100	2.33	2.97	0.46	0.62	0.51	1.16	1.31	0.89	76.09
Lugo	100	5.88	1.22	7.28	0.62	1.57	2.20	7.51	2.21	7.74
Madrid	100	16.60	2.57	3.37	2.34	3.70	2.30	4.91	2.98	12.00
Málaga	100	60.67	1.60	0.73	0.79	1.43	0.60	1.93	2.55	4.89
Murcia	100	14.93	1.47	1.31	0.67	0.36	0.87	3.87	5.13	7.52
Navarra	100	5.25	5.49	2.36	0.68	1.18	2.24	4.73	1.78	15.96
Ourense	100	2.25	1.75	6.01	0.37	0.85	0.94	5.56	1.50	3.71
Palencia	100	4.61	3.19	4.21	0.31	0.56	5.05	18.42	2.65	11.17
Palmas, Las	100	8.37	0.65	1.13	0.69	37.35	1.64	1.38	0.73	6.69
Pontevedra	100	8.11	1.66	9.62	0.80	1.95	1.33	10.05	2.40	6.04
Rioja, La	100	6.78	5.39	2.88	1.56	1.42	3.91	6.08	1.98	16.79
Salamanca	100	11.76	1.88	6.19	0.75	1.12	3.04	14.25	3.14	5.39
S. C. Tenerife	100	15.94	0.53	1.14	0.57	30.91	1.02	2.04	0.91	3.68
Segovia	100	7.41	2.02	4.63	0.44	0.62	2.04	12.51	3.82	7.02
Sevilla	100	45.76	1.41	0.97	1.09	1.81	0.70	2.38	2.62	8.32
Soria	100	4.21	7.40	2.17	0.17	0.51	1.84	14.96	4.93	11.97
Tarragona	100	3.12	8.74	2.90	0.44	0.24	1.21	2.65	2.01	49.02
Teruel	100	4.03	16.09	0.94	0.48	0.43	1.53	3.04	3.14	16.66
Toledo	100	12.65	2.14	2.31	0.63	1.16	1.96	5.59	15.80	6.64
Valencia/València	100	7.19	3.65	0.98	1.65	0.89	0.74	4.49	6.38	11.38
Valladolid	100	8.95	1.65	4.29	0.71	0.91	2.34	17.77	3.20	6.85
Zamora	100	8.25	2.08	5.64	0.68	0.93	2.67	15.96	3.26	4.99
Zaragoza	100	8.23	16.53	1.58	1.11	0.82	2.23	4.21	2.59	20.44
Ceuta	100	51.83	0.52	1.34	1.45	1.24	2.38	2.79	0.72	2.79
Melilla	100	62.57	0.95	1.11	0.33	1.79	0.19	0.67	1.75	5.65

## 6. Percentage distribution of Spanish travellers in each province by Autonomous City and Community of origin

Results by provinces

(Conclusion)

Provinces	Comunitat Valenciana	Extremadura	Galicia	Madrid, C. de	Murcia, Región de	Navarra, C. Foral de	País Vasco	Rioja, La	Ceuta	Melilla
<b>TOTAL</b>	<b>8.13</b>	<b>2.26</b>	<b>5.18</b>	<b>19.32</b>	<b>2.18</b>	<b>1.49</b>	<b>5.05</b>	<b>0.83</b>	<b>0.27</b>	<b>0.36</b>
Albacete	22.34	1.29	1.26	19.35	6.87	0.90	1.44	0.26	0.09	0.18
Alicante/Alacant	33.03	1.77	2.15	23.67	2.90	1.04	2.35	0.88	0.03	0.46
Almería	8.51	0.86	0.78	10.51	10.85	0.34	0.97	0.31	0.61	0.23
Araba/Álava	4.05	0.77	4.65	18.83	0.59	2.28	22.02	1.18	0.11	-
Asturias	3.70	1.62	10.54	21.00	0.82	2.05	7.77	0.98	0.21	0.04
Ávila	6.30	3.57	3.71	42.16	3.08	0.66	2.19	0.71	0.17	0.04
Badajoz	4.28	16.08	2.76	21.05	2.02	0.90	3.15	0.57	0.16	0.09
Balears, Illes	5.70	0.32	2.52	19.90	0.51	0.58	4.98	0.34	0.11	3.50
Barcelona	6.16	0.71	2.70	17.70	1.31	1.30	6.19	0.55	0.35	0.41
Bizkaia	4.42	0.66	3.56	21.46	1.61	3.20	24.17	1.25	0.06	0.00
Burgos	4.03	2.24	4.87	24.14	1.02	1.66	9.36	1.18	0.15	-
Cáceres	3.51	12.17	5.35	28.09	0.83	1.04	5.50	0.99	0.46	0.02
Cádiz	2.31	4.52	1.76	16.33	1.40	0.56	2.51	0.38	0.91	0.19
Cantabria	3.20	1.08	6.61	22.37	1.46	2.87	11.47	1.98	0.24	0.03
Castellón/Castelló	31.56	1.08	0.67	16.13	1.30	1.59	3.56	1.51	0.06	0.06
Ciudad Real	10.80	1.94	3.14	26.39	4.47	1.06	3.62	0.76	0.17	0.09
Córdoba	6.10	2.21	1.24	17.11	2.09	0.65	1.56	0.26	0.27	0.46
Coruña, A	4.95	1.22	29.38	19.61	1.45	1.77	3.82	0.42	0.08	0.10
Cuenca	16.70	1.34	2.94	26.60	3.85	0.91	2.99	0.38	0.21	0.06
Gipuzkoa	5.35	0.89	3.91	18.78	0.77	4.10	21.72	1.17	0.04	0.04
Girona	3.36	0.35	1.07	4.89	0.57	0.90	1.96	0.39	0.00	-
Granada	6.23	2.27	1.48	13.98	3.31	0.40	1.68	0.71	0.55	0.31
Guadalajara	5.85	2.96	1.41	27.22	1.22	0.84	2.30	2.32	0.02	0.09
Huelva	1.44	13.53	1.57	9.97	0.35	0.53	1.71	0.20	0.11	0.43
Huesca	7.62	1.15	2.17	12.18	0.50	2.71	6.05	0.72	0.11	-
Jaén	6.48	1.27	1.96	14.11	3.60	0.39	1.76	0.32	0.35	0.10
León	3.63	1.52	11.76	21.21	0.94	1.62	5.90	1.25	0.33	0.04
Lleida	3.25	0.17	2.07	5.24	0.28	0.29	2.00	0.29	0.07	0.02
Lugo	3.21	1.25	39.18	14.14	0.69	1.08	3.68	0.50	-	0.04
Madrid	8.72	2.79	5.25	21.15	2.74	1.50	4.93	1.13	0.41	0.62
Málaga	2.14	2.88	1.30	13.35	1.15	0.33	2.03	0.28	0.40	0.96
Murcia	18.09	1.24	1.63	20.32	20.49	0.40	1.34	0.16	0.12	0.06
Navarra	6.54	1.12	4.11	19.12	1.55	10.07	15.97	1.73	0.12	0.01
Ourense	2.58	0.66	53.89	14.42	0.65	0.53	4.09	0.18	0.04	0.04
Palencia	3.20	2.57	6.13	25.60	0.76	1.42	9.13	0.95	0.00	0.06
Palmas, Las	1.35	0.36	2.56	32.73	0.23	0.50	3.22	0.26	0.05	0.11
Pontevedra	3.66	1.24	28.20	15.40	1.70	1.56	5.50	0.51	0.21	0.05
Rioja, La	6.36	0.71	3.92	19.97	1.49	3.28	13.65	3.57	0.09	0.17
Salamanca	5.79	4.09	6.88	23.62	1.67	1.43	7.30	1.57	0.13	0.03
S. C. Tenerife	1.27	0.54	1.95	34.38	0.18	0.71	3.84	0.37	0.02	0.01
Segovia	5.81	2.36	6.33	37.33	1.55	0.80	4.48	0.71	0.11	0.00
Sevilla	4.25	3.00	2.19	19.10	1.51	0.64	2.43	0.44	1.12	0.27
Soria	5.86	1.14	4.58	30.08	0.79	1.82	6.52	1.04	-	-
Tarragona	7.10	0.67	1.18	6.19	1.02	5.67	5.05	2.74	0.06	-
Teruel	28.53	0.70	0.92	14.73	1.91	1.94	4.05	0.80	0.06	0.03
Toledo	9.33	3.38	3.40	23.78	2.86	1.50	5.86	0.73	0.15	0.14
Valencia/València	21.89	1.06	2.27	29.82	2.91	0.98	2.90	0.59	0.16	0.08
Valladolid	4.72	2.79	7.11	29.36	1.28	1.42	5.47	0.67	0.25	0.25
Zamora	5.53	2.14	12.69	25.38	1.25	0.79	6.82	0.60	0.18	0.16
Zaragoza	6.86	1.36	3.33	19.54	1.46	2.13	6.52	0.92	0.07	0.06
Ceuta	1.03	0.83	0.31	20.27	0.62	0.10	0.78	0.10	10.88	-
Melilla	1.81	0.33	0.67	11.78	1.95	-	1.48	0.33	0.46	6.19

## 7. Percentage distribution of overnight stays in each province by Autonomous City and Community of origin

Results by provinces

(Continued)

Provinces	Total	Andalucía	Aragón	Asturias, P. de	Balears, Illes	Canarias	Cantabria	Castilla y León	Castilla-La Mancha	Cataluña
<b>TOTAL</b>	<b>100</b>	<b>17.80</b>	<b>3.07</b>	<b>3.10</b>	<b>1.66</b>	<b>3.34</b>	<b>1.45</b>	<b>6.02</b>	<b>3.63</b>	<b>14.18</b>
Albacete	100	8.88	1.20	1.08	0.93	0.47	0.73	3.08	31.79	6.66
Alicante/Alacant	100	3.29	3.43	5.23	0.27	0.42	1.51	11.24	7.16	3.68
Almería	100	49.97	0.65	0.96	0.15	0.18	0.49	4.78	4.33	3.19
Araba/Álava	100	10.14	3.09	3.30	0.49	1.08	1.96	8.59	2.97	13.01
Asturias	100	9.35	1.62	9.22	0.98	3.52	2.86	9.99	4.49	8.15
Ávila	100	10.23	1.49	2.35	0.74	1.37	1.14	11.46	3.86	5.89
Badajoz	100	26.02	5.18	4.48	0.55	0.78	1.62	3.97	3.19	7.26
Balears, Illes	100	14.86	1.31	2.29	14.81	0.51	0.74	2.42	1.45	20.42
Barcelona	100	9.34	2.73	1.46	1.97	2.18	0.77	2.57	1.57	41.25
Bizkaia	100	6.85	2.74	3.53	1.63	3.13	1.99	6.06	1.51	13.95
Burgos	100	7.21	4.11	2.26	0.55	1.06	3.75	21.38	3.17	9.80
Cáceres	100	18.81	1.16	3.21	0.50	1.05	2.47	7.37	3.43	5.93
Cádiz	100	45.30	1.01	2.11	0.52	0.85	0.86	5.25	2.99	3.68
Cantabria	100	11.14	3.41	4.39	0.39	1.75	3.98	11.55	5.07	6.45
Castellón/Castelló	100	2.62	8.14	2.24	0.14	0.26	1.08	9.52	6.43	12.72
Ciudad Real	100	17.46	1.09	2.69	0.41	0.64	1.31	2.77	17.06	4.83
Córdoba	100	49.03	1.10	0.80	0.36	1.07	0.70	2.85	3.03	9.13
Coruña, A	100	9.05	1.48	4.48	0.86	2.20	1.44	6.46	2.70	8.90
Cuenca	100	15.41	2.88	1.02	0.93	0.91	0.92	3.32	13.35	5.15
Gipuzkoa	100	7.40	4.42	2.48	1.01	1.30	1.38	6.47	2.02	19.02
Girona	100	6.07	2.05	0.81	0.52	0.46	0.53	2.30	0.63	69.38
Granada	100	56.14	0.44	1.03	0.44	0.89	0.50	2.48	2.05	6.15
Guadalajara	100	5.90	4.38	1.60	0.44	0.55	2.52	3.29	27.30	11.44
Huelva	100	48.00	0.39	1.21	0.17	0.54	1.15	8.54	2.80	1.40
Huesca	100	7.00	21.28	2.11	0.82	2.22	0.79	1.72	1.93	26.88
Jaén	100	54.61	0.75	1.21	0.86	0.52	0.45	2.48	3.62	5.87
León	100	5.06	2.35	11.75	0.64	1.81	3.10	22.90	1.82	7.02
Lleida	100	3.40	2.11	0.50	0.63	0.52	1.12	1.22	0.93	73.92
Lugo	100	4.55	0.88	7.74	0.49	2.28	1.99	7.15	2.09	6.13
Madrid	100	17.32	2.40	3.67	2.44	4.34	2.33	4.77	3.01	12.49
Málaga	100	55.40	1.73	1.52	0.69	1.25	0.75	3.86	2.62	3.93
Murcia	100	13.15	1.46	1.78	0.57	0.29	1.84	5.48	6.10	6.12
Navarra	100	6.12	6.96	2.52	0.51	1.61	1.61	4.46	1.66	15.01
Ourense	100	1.95	1.53	8.10	0.26	0.58	0.62	5.11	1.38	4.29
Palencia	100	3.89	2.91	3.82	0.21	0.82	5.75	20.14	2.82	9.74
Palmas, Las	100	8.04	0.60	2.26	0.29	26.09	1.49	1.67	0.64	8.13
Pontevedra	100	9.37	1.69	11.28	1.07	2.16	1.60	11.58	2.43	4.32
Rioja, La	100	9.11	5.05	3.06	1.22	1.30	3.65	6.64	2.07	14.68
Salamanca	100	9.54	1.84	13.30	0.83	1.26	2.49	14.48	2.34	6.37
S. C. Tenerife	100	13.90	0.63	1.88	0.27	20.90	1.58	3.01	1.18	4.25
Segovia	100	8.63	1.95	4.04	0.43	0.84	2.50	12.39	4.26	7.30
Sevilla	100	42.21	1.82	1.12	1.23	2.14	0.86	2.48	2.64	9.57
Soria	100	4.31	7.09	2.37	0.16	0.47	1.55	17.28	4.48	11.18
Tarragona	100	2.87	9.79	2.30	0.37	0.23	1.38	3.69	2.55	42.75
Teruel	100	4.18	19.48	1.02	0.38	0.34	1.56	2.81	3.03	18.17
Toledo	100	13.35	2.19	2.51	0.64	1.27	1.85	5.63	14.65	6.77
Valencia/València	100	6.02	4.49	1.43	1.09	0.74	0.92	7.49	8.34	8.66
Valladolid	100	8.52	1.81	4.28	0.65	0.84	2.41	18.55	3.23	7.59
Zamora	100	8.39	2.16	5.33	0.82	0.86	3.25	16.61	3.66	4.92
Zaragoza	100	7.60	18.10	1.52	1.23	0.97	2.05	4.54	2.90	19.22
Ceuta	100	57.60	2.74	1.50	1.36	1.12	1.08	1.92	0.33	2.48
Melilla	100	64.22	0.84	0.65	0.25	1.27	0.12	0.44	0.88	4.82

## 7. Percentage distribution of overnight stays in each province by Autonomous City and Community of origin

Results by provinces

(Conclusion)

Provinces	Comunitat Valenciana	Extremadura	Galicia	Madrid, C. de	Murcia, Región de	Navarra, C. Foral de	País Vasco	Rioja, La	Ceuta	Melilla
<b>TOTAL</b>	<b>7.46</b>	<b>2.50</b>	<b>4.63</b>	<b>20.92</b>	<b>2.02</b>	<b>1.53</b>	<b>5.09</b>	<b>0.91</b>	<b>0.23</b>	<b>0.47</b>
Albacete	17.27	0.75	1.20	17.56	6.37	0.74	1.06	0.11	0.04	0.08
Alicante/Alacant	22.45	3.39	2.89	25.72	2.36	1.47	4.01	1.26	0.01	0.19
Almería	7.20	1.35	1.54	14.03	8.28	0.39	1.46	0.34	0.55	0.14
Araba/Álava	7.10	0.66	5.93	17.93	0.60	1.67	20.42	1.00	0.07	-
Asturias	4.72	1.46	10.53	20.93	1.28	3.10	6.54	1.00	0.22	0.04
Ávila	6.19	3.32	4.04	40.06	3.96	0.71	2.42	0.65	0.12	0.03
Badajoz	5.02	14.76	2.11	18.32	2.30	1.07	2.67	0.44	0.18	0.06
Balears, Illes	5.41	0.43	3.49	19.45	0.48	0.85	5.94	0.41	0.10	4.65
Barcelona	5.62	1.53	2.59	16.86	1.38	1.52	5.45	0.46	0.24	0.51
Bizkaia	5.35	0.90	3.45	21.04	1.83	2.72	22.24	1.04	0.06	0.00
Burgos	4.00	3.75	5.41	22.42	1.00	1.46	7.54	0.98	0.14	-
Cáceres	4.25	13.12	4.38	26.07	0.87	0.82	4.70	1.49	0.34	0.01
Cádiz	2.51	4.93	1.76	21.47	1.27	0.65	3.73	0.50	0.52	0.10
Cantabria	4.02	1.16	5.31	26.02	2.17	2.79	8.34	1.80	0.22	0.03
Castellón/Castelló	22.32	1.28	0.75	22.28	0.74	2.22	5.22	1.99	0.03	0.02
Ciudad Real	11.67	2.14	2.48	25.65	4.24	0.96	3.68	0.68	0.15	0.10
Córdoba	7.11	1.99	1.47	15.90	2.04	0.70	1.63	0.30	0.26	0.54
Coruña, A	4.98	1.43	27.47	19.91	1.91	2.10	3.95	0.52	0.08	0.09
Cuenca	16.34	1.39	2.72	27.39	4.04	0.73	2.40	0.85	0.18	0.07
Guipúzcoa	4.40	1.01	3.23	20.48	0.83	3.84	19.42	1.25	0.03	0.02
Girona	3.92	0.33	1.26	5.55	1.02	1.08	2.94	0.56	0.58	-
Granada	6.09	1.82	1.47	13.58	2.39	0.39	2.59	0.89	0.46	0.22
Guadalajara	6.03	2.58	1.36	26.63	1.29	0.82	1.73	1.99	0.04	0.10
Huelva	1.14	15.22	1.92	13.78	0.27	0.33	2.43	0.25	0.20	0.23
Huesca	11.05	1.34	1.92	12.77	0.40	1.78	5.25	0.51	0.23	-
Jaén	6.21	1.13	2.41	13.65	3.86	0.33	1.54	0.19	0.23	0.07
León	3.68	1.59	11.35	18.14	0.89	1.25	5.23	1.06	0.32	0.02
Lleida	3.96	0.26	3.05	5.38	0.32	0.25	2.11	0.27	0.03	0.01
Lugo	2.54	0.94	40.27	17.47	0.66	1.05	3.33	0.37	-	0.06
Madrid	8.30	2.65	5.59	19.18	3.21	1.36	4.83	0.95	0.45	0.71
Málaga	2.13	4.57	1.19	15.06	0.73	0.48	2.71	0.40	0.42	0.56
Murcia	13.21	1.46	2.02	27.35	16.61	0.52	1.65	0.27	0.08	0.03
Navarra	6.12	0.85	4.33	19.51	1.74	10.45	14.41	2.01	0.11	0.00
Ourense	2.26	0.40	49.97	18.23	0.59	0.37	4.16	0.15	0.02	0.04
Palencia	4.41	1.82	9.33	23.06	0.93	0.96	8.20	0.98	0.15	0.03
Palmas, Las	1.38	0.30	3.28	39.68	0.23	0.59	4.71	0.35	0.05	0.21
Pontevedra	4.58	1.01	23.76	12.81	2.70	1.35	7.61	0.49	0.14	0.03
Rioja, La	6.47	1.19	3.73	19.47	1.45	2.94	13.81	4.00	0.05	0.09
Salamanca	6.89	4.20	5.67	20.54	1.78	1.14	6.11	1.07	0.12	0.02
S. C. Tenerife	1.37	0.62	2.74	41.10	0.30	0.71	5.12	0.39	0.04	0.01
Segovia	6.45	4.23	5.25	34.40	1.53	0.87	4.26	0.53	0.14	0.01
Sevilla	4.76	2.87	2.62	18.70	1.62	0.75	2.80	0.52	1.05	0.24
Soria	6.44	1.48	5.40	28.18	1.10	1.75	5.83	0.93	-	-
Tarragona	5.07	1.04	1.29	7.21	0.90	6.41	8.03	4.06	0.06	-
Teruel	26.00	0.54	0.76	14.48	1.77	1.44	3.10	0.79	0.13	0.03
Toledo	10.91	3.73	4.03	21.53	2.71	1.46	5.66	0.86	0.16	0.09
Valencia/València	15.74	1.82	2.46	33.60	1.99	1.12	3.16	0.78	0.12	0.03
Valladolid	4.81	2.36	7.39	28.32	1.13	1.21	5.71	0.63	0.36	0.21
Zamora	4.05	2.87	11.66	25.39	1.26	1.02	7.04	0.50	0.10	0.09
Zaragoza	6.42	1.43	3.51	20.22	1.87	1.69	5.68	0.91	0.07	0.07
Ceuta	1.59	0.56	0.14	19.38	0.51	0.05	0.36	0.09	7.19	-
Melilla	2.75	0.37	0.41	13.39	3.37	-	1.19	0.33	0.70	4.02

## 8. Travellers, overnight stays and average stay by country of residence

### Results by countries

Countries	Number of travellers		Overnight stays	
	Total	%	Total	%
<b>TOTAL</b>	<b>8,919,170</b>	<b>100.00</b>	<b>32,203,965</b>	<b>100.00</b>
Residents in Spain	4,405,447	49.39	11,131,921	34.57
Residents abroad	4,513,723	50.61	21,072,044	65.43
Total Residents abroad	4,513,723	100.00	21,072,044	100.00
Total Residents in U.E. (without Spain)	3,328,956	73.75	17,315,732	82.17
- Germany	885,163	19.61	5,817,990	27.61
- Austria	39,158	0.87	188,527	0.89
- Belgium	123,268	2.73	631,185	3.00
- Denmark	40,390	0.89	224,385	1.06
- Finland	16,618	0.37	59,563	0.28
- France	404,542	8.96	1,177,774	5.59
- Greece	13,245	0.29	40,636	0.19
- Ireland	67,486	1.50	294,978	1.40
- Italy	262,927	5.83	922,521	4.38
- Luxembourg	7,338	0.16	52,498	0.25
- Netherlands	167,905	3.72	838,608	3.98
- Poland	75,029	1.66	360,467	1.71
- Portugal	121,603	2.69	343,287	1.63
- United Kingdom	940,115	20.83	5,647,057	26.80
- Czech Republic	28,526	0.63	153,962	0.73
- Sweden	65,606	1.45	304,520	1.45
- Rest of UE*	70,037	1.55	257,776	1.22
Norway	40,112	0.89	184,151	0.87
Russia	156,263	3.46	1,051,911	4.99
Switzerland	82,628	1.83	363,048	1.72
Rest of Europe	96,726	2.14	352,155	1.67
Japan	60,036	1.33	102,713	0.49
United States of America	216,110	4.79	459,449	2.18
Rest of America	272,716	6.04	616,055	2.92
African's countries	42,547	0.94	99,605	0.47
Rest of the world	217,629	4.82	527,224	2.50

\*Countries included in the Rest of UE: Bulgaria, Cyprus, Slovakia, Slovenia, Estonia, Hungary, Latvia, Lithuania, Malta and Romania

## Hotel Price Index (HPI). 2008 Base

September 2011

Provisional data

### General Autonomous Cities and Communities and national indices

	Index	Interannual variation rate
<b>TOTAL</b>	<b>92.7</b>	<b>1.2</b>
Andalucía	91.9	-0.3
Aragón	69.9	-3.7
Asturias, Principado de	94.0	-1.2
Balears, Illes	95.2	2.8
Canarias	95.6	3.5
Cantabria	90.9	-1.4
Castilla y León	93.5	-2.4
Castilla - La Mancha	90.6	-3.8
Cataluña	96.3	3.8
Comunitat Valenciana	88.5	-1.9
Extremadura	94.8	-1.5
Galicia	95.6	-5.4
Madrid, Comunidad de	83.9	-0.8
Murcia, Región de	87.1	-1.3
Navarra, Comunidad Foral de	89.4	-2.9
País Vasco	96.0	0.2
Rioja, La	94.2	2.2
Ceuta	115.5	12.9
Melilla	102.7	0.1

### National General Index and breakdown by categories

	Index	Interannual variation rate
<b>TOTAL</b>	<b>92.7</b>	<b>1.2</b>
HOTELS: Gold stars		
Five	85.6	1.5
Fourth	92.0	1.7
Three	94.5	1.1
Two	95.4	-0.5
One	102.7	2.6
HOSTALS: Silver stars		
Three and two	94.0	-4.0
One	96.1	0.4

# Indicators on the Profitability of the Hotel Sector

September 2011

Provisional data

## ADR and RevPAR for Autonomous Cities and Communities and national indices

	ADR (in euros)	Variation Rate variation	RevPar (in euros)	Variation Rate variation
<b>TOTAL</b>	<b>70.2</b>	<b>2.6</b>	<b>46.9</b>	<b>9.0</b>
Andalucía	77.3	0.5	47.9	3.8
Aragón	55.8	-3.8	20.4	-2.2
Asturias, Principado de	60.0	-1.2	28.8	10.1
Balears, Illes	65.6	4.8	55.4	14.6
Canarias	70.8	3.8	55.6	15.4
Cantabria	62.8	-4.3	29.1	-6.5
Castilla y León	57.8	-0.6	25.3	3.7
Castilla - La Mancha	58.0	-5.1	20.6	-10.4
Cataluña	75.0	7.6	52.8	15.9
Comunitat Valenciana	66.2	-1.5	43.5	2.1
Extremadura	57.0	-2.0	23.7	9.0
Galicia	56.1	-3.1	22.5	-18.4
Madrid, Comunidad de	81.7	-0.5	56.7	6.5
Murcia, Región de	62.6	-5.8	30.6	-3.6
Navarra, Comunidad Foral de	64.3	-0.4	30.8	2.9
País Vasco	79.4	-4.2	52.9	2.7
Rioja, La	64.9	4.9	37.1	6.5
Ceuta	72.2	3.8	40.8	6.8
Melilla	65.5	-2.8	41.7	5.5

## National ADR and RevPar and breakdown by categories

	ADR (in euros)	Variation Rate interannual	RevPar (in euros)	Variation Rate interannual
<b>TOTAL</b>	<b>70.2</b>	<b>2.6</b>	<b>46.9</b>	<b>9.0</b>
<b>HOTELS: Gold stars</b>				
Five	145.6	4.0	97.8	9.1
Four	79.8	1.9	60.9	7.3
Three	58.3	2.6	43.0	10.9
Two	53.5	3.6	29.1	9.6
One	49.9	4.5	20.7	6.5
<b>GUESTHOUSES: Silver stars</b>				
Three and two	46.0	-0.6	17.9	-0.7
One	39.9	7.4	14.0	15.1

Due to the updating in the establishments directory carried out in Navarra in January 2011 and in Extremadura in March 2011, the data to be published for Navarra, Extremadura and the national total from those dates are not directly comparable with the data published last year, therefore data link coefficients have been calculated to allow the comparison of data between different years. These coefficients are available in INE website ([www.ine.es](http://www.ine.es))