

**Hotel Tourism Short-Term Trends (HOS/HPI/ADR/REVPAR)
October 2010. Provisional data**

**Overnight stays in hotel establishments increase 9.9% in October,
as compared with the same month in 2009**

**Hotels earn 36.6 euros per available room and invoice an average of
66.2 euros per occupied room**

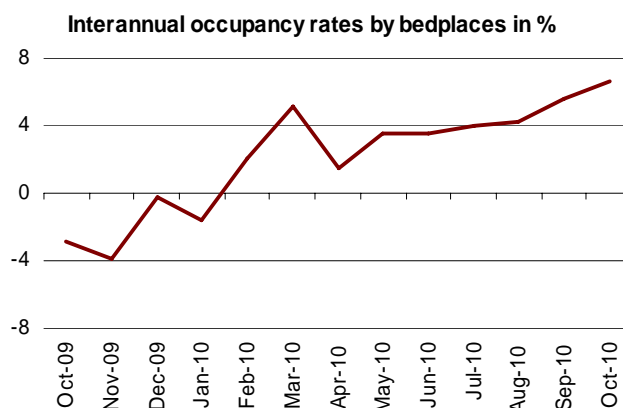
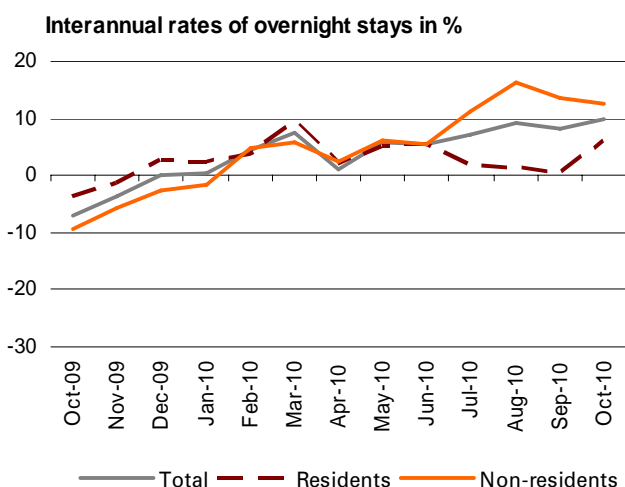
During the month of October, 23.9 million overnight stays were recorded in hotel establishments, indicating a 9.9% increase as compared with the same month in 2009. This increase in overnight stays took place for both residents, whose interannual rate stood at 6.0%, and non-residents, with an interannual variation of 12.5%.

The average stay increased 0.5% as compared with October 2009, standing at 3.1 nights per guest.

During the first ten months of the year, overnight stays increased 6.6% as compared with the same period the previous year.

In turn, **the Hotel Price Index (HPI) registered a 1.4% decrease in October**, this rate being 5.8 points higher than that registered in the same month of 2009. Regarding the indicators on the profitability of the hotel sector, invoicing per occupied room reached an average value of 66.2 euros (0.8 euros more than in October 2009), and income per available room stood at 36.6 euros (2.5 euros more than one year ago).

In terms of occupancy, 50.8% of the available bedplaces were filled in October, indicating a 6.6% increase as compared with the same month the previous year. The weekend occupancy rate by bedplaces stood at 54.4%, with interannual growth of 2.6%.

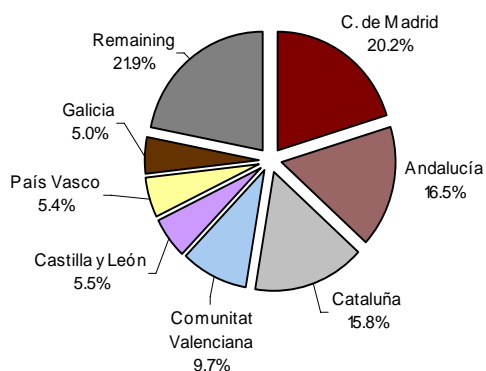


Overnight stays of guests resident abroad

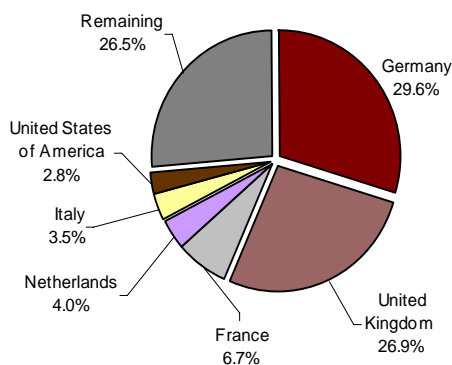
Guests from Germany and the United Kingdom registered 8.2 million overnight stays in October. The German market experienced an 8.0% interannual increase in overnight stays, while the British market registered an 8.4% increase.

Overnight stays of guests from France, Netherlands and Italy, the (the following countries of origin) registered interannual rates of 15.9%, 8.4% and 35.7%, respectively.

Overnight stays of guests resident in Spain by Autonomous Community of origin in %



Overnight stays of guests resident abroad by country of origin in %

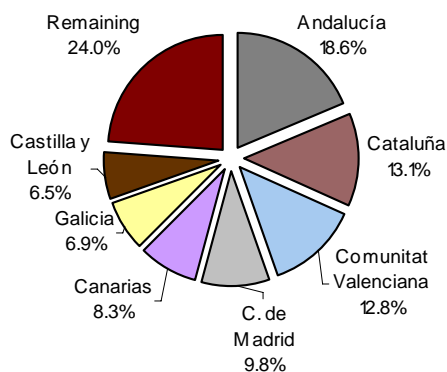


Main destinations

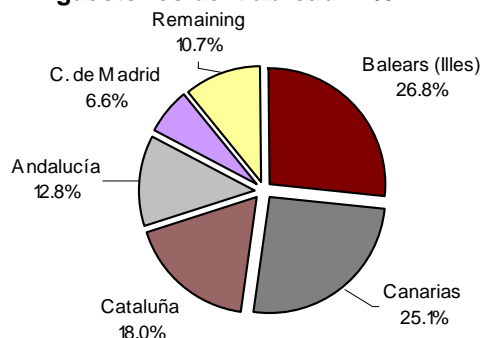
The main destination chosen by non-residents was Illes Balears. In this Autonomous Community, overnight stays by foreign nationals increased 7.8% as compared with October 2009. It was followed by Canarias, with an interannual rate of 23.6%, and Cataluña, with an increase of 16.5%.

Andalucía, Cataluña and Comunitat Valenciana were the main destinations of guests resident in Spain, with interannual rates for overnight stays of 7.1%, 16.6% and 4.5%, respectively.

Distribution of overnight stays of guests resident in Spain in %



Distribution of overnight stays of guests resident abroad in %



Results by Autonomous Community, tourist area and tourist site

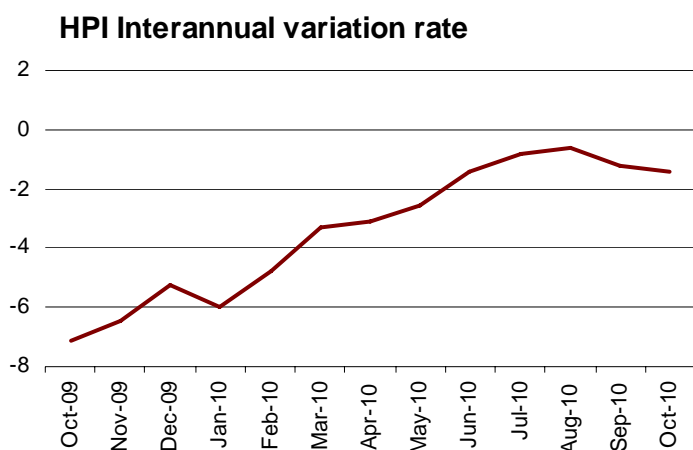
During the month of October, Canarias was the Autonomous Community with the highest occupancy rate by bedplaces (64.8%), followed by Comunidad de Madrid (59.0%) and Cataluña (53.3%).

The tourist areas with the highest occupancy and overnight stay rates were located on the islands and the coasts. Costa de Barcelona recorded both the highest occupancy rate by bedplaces (70.7%) and the highest weekend occupancy rate by bedplaces (76.3%). Mallorca registered 3.5 million overnight stays in October.

The tourist sites with the highest number of overnight stays were Madrid, Barcelona and Benidorm. Benidorm reached the highest occupancy rate by bedplaces (77.2%), and the highest weekend occupancy (77.8%).

Evolution of the Hotel Price Index

The interannual rate of the HPI stood at -1.4% in October, this rate being 0.2 points lower than that obtained last month, and 5.8 points higher than that registered one year ago.



HPI by Autonomous Community

The four Communities (Cataluña, Andalucía, Canarias and Illes Balears) that carried 63.1% of the total weight of the HPI in the month of October, showed uneven behaviour as compared with September 2010.

Cataluña, which carried the greatest load in the weighting structure this month, presented an interannual rate of 1.4%, that is, 2.0 points higher than that estimated in September. Hotel prices experienced a decrease of 2.4% in Andalucía, as compared with the -1.6% registered the previous month. Canarias showed an interannual rate of -1.0%, as compared with the -0.7% observed last month. In Illes Balears, the interannual rate was -3.2%, that is, 1.6 points lower than that obtained in the month of September.

HPI by category

Hotel prices decreased in three- and two-silver-star (1.8% in the interannual rate), in five-gold-star and in four-gold-star (both with 1.6%), in two-gold-star (1.7%) and three-gold-star hotels (1.4%) in October.

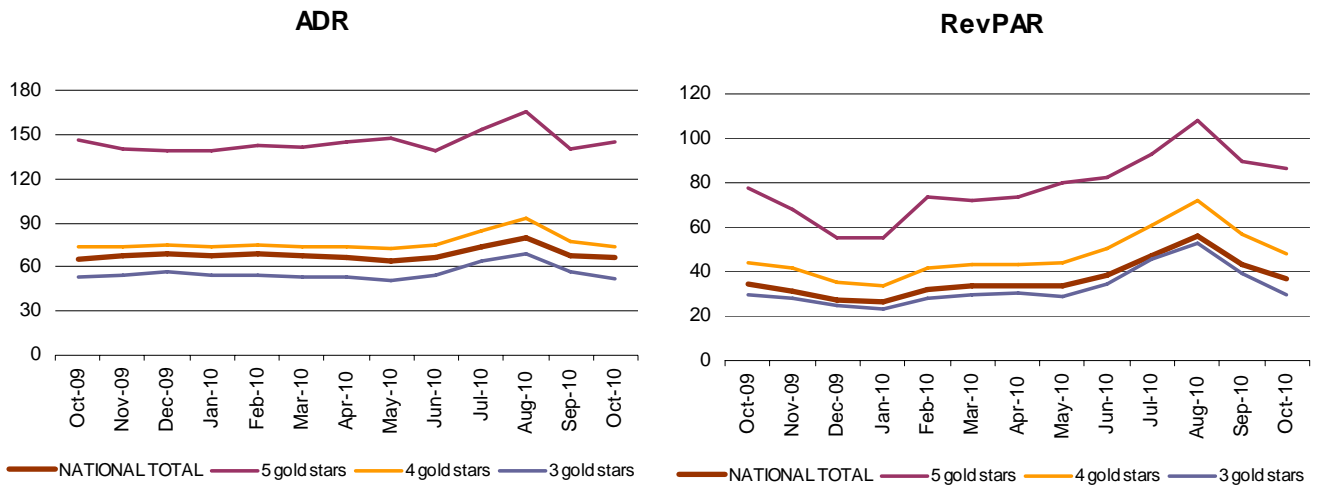
In turn, one-gold-star and one-silver-star hotels recorded interannual increases of 1.9% and 1.2%, respectively.

Indicators on the Profitability of the Hotel Sector

The average invoicing by hotels per occupied room (ADR) in October was 66.2 euros, indicating an increase of 0.8 euros as compared with the same month in 2009.

In turn, income per available room (RevPAR), conditioned by the occupancy registered in the hotel establishments, reached 36.6 euros, with an increase of 2.5 euros as compared with October 2009.

By category, the average invoicing was 145.3 euros for five-star hotels, 73.7 euros for four-star hotels and 51.8 euros for three-star hotels. Income per available room for these same categories was 86.1, 48.1 and 29.5 euros, respectively.



Methodological note 2010

Indicators on the Profitability of the Hotel Sector Base change 2008

In the year 2010, the INE began to publish two new variables pertaining to the **Indicators on the Profitability of the Hotel Sector**: the **ADR** (Average Daily Rate or Average Invoicing per Occupied Room) and the **RevPAR** (Revenue Per Available Room or Income per Available Room), both compiled with information that hotel establishments provide in the questionnaire of the Hotel Occupancy Survey (HOS).

The changes occurring in the sector in recent years encouraged the introduction of certain modifications in said section of the questionnaire, from January 2008 onwards. With these changes, we hope, on the one hand, **to include the new distribution channels favoured by generalised Internet use**, and on the other hand, **to adapt the questionnaire to the terms and concepts that are most frequently used within the sector**, as well as to the data available in the business management systems themselves.

The calculation and dissemination of the two new indicators broadens the information demanded by the hotel sector, thus increasing the great utility of the HOS. They do not respond, therefore, to a regulatory demand on behalf of the European Union, but rather, to the needs for information expressed by the sector itself.

These two variables, together with the occupancy rate by room, constitute an important source of information for hotel establishments, which allows them to evaluate their price policy or *revenue management*.

On the other hand, so as to avoid saturating users with indicators that hinder the interpretation of the results, the Hotel Income Index (HII) has ceased to be published, with the last data available corresponding to December 2009.

Available on the INE website, http://www.ine.es/en/welcome_en.htm, are the ADR and RevPAR series, since January 2008, with data on a national level, by category and by Autonomous Community.

Tourist Accommodation Occupancy Survey (Hotels and similar establishments)

October 2010

Provisional data

1. Travellers, overnight stays and average stay by categories of establishment

Category	Number of travellers			Number of overnight stays			Average stay
	Total	Residents in Spain	Residents abroad	Total	Residents in Spain	Residents abroad	
TOTAL	7,665,545	4,176,359	3,489,186	23,910,148	9,273,098	14,637,050	3.12
HOTELS: Golden stars							
Five	470,395	197,469	272,926	1,397,977	407,727	990,250	2.97
Four	3,389,930	1,753,666	1,636,264	10,883,994	3,770,779	7,113,215	3.21
Three	2,319,581	1,240,884	1,078,697	8,064,963	2,980,804	5,084,159	3.48
Two	579,310	368,606	210,704	1,492,977	801,766	691,210	2.58
One	223,647	146,366	77,281	514,072	288,313	225,759	2.30
INNS: Silver stars							
Two and three	382,628	274,323	108,305	833,060	554,539	278,521	2.18
One	300,054	195,045	105,009	723,106	469,170	253,936	2.41
Interannual rate	9.33	5.48	14.31	9.92	6.02	12.54	0.54
Cumulative interannual rate	6.55	2.89	11.53	6.56	3.41	8.94	0.01

2. Open establishments, capacity, occupancy and employed personnel by categories of establishment

Category	Estimated open establishments	Estimated bedplaces	Level of occupancy			Employed personnel
			Per bedplaces	Per bedplaces at weekend	Per rooms	
TOTAL	15,149	1,500,208	50.83	54.44	55.25	199,320
HOTELS: Golden stars						
Five	255	82,808	54.12	56.59	59.86	23,971
Four	1,950	592,735	58.48	63.16	65.41	88,435
Three	2,587	473,850	54.20	56.18	56.76	55,972
Two	1,890	119,499	40.05	44.84	45.06	11,441
One	1,179	51,200	32.16	36.53	36.41	4,468
INNS: Silver stars						
Two and three	3,030	95,870	27.93	32.66	32.56	8,344
One	4,259	84,247	27.58	30.40	32.00	6,688
Interannual rate	0.00	2.90	6.59	2.64	5.69	2.50

3. Travellers, overnight stays, occupancy, average stay and employed personnel

Results by areas and tourist sites

	Travellers		Overnight stays		Level of occupancy			Average stay	Employed personnel
	Residents in Spain	Residents abroad	Residents in Spain	Residents abroad	Per bedplac	Per bedplaces	Per rooms at weekend		

Tourist areas with a greater level of occupancy per month

Costa de Barcelona	173,355	474,690	328,549	1,203,076	70.65	76.26	81.13	2.36	11,602
Isla de Gran Canaria	60,204	121,945	208,653	972,967	67.35	68.66	74.20	6.49	9,488
Isla de Tenerife	81,127	183,077	308,149	1,388,763	65.75	66.56	69.42	6.42	14,288
Isla de Lanzarote	29,532	58,462	163,152	492,842	64.38	62.23	71.33	7.45	4,903
Isla de Fuerteventura	15,163	81,322	65,441	769,946	63.05	62.50	68.93	8.66	6,261
Costa Blanca	163,856	117,756	639,458	616,853	62.12	65.05	63.41	4.46	7,966
Costa Guipuzcoana	40,621	22,429	75,106	41,563	60.52	74.83	68.47	1.85	1,229
Costa del Maresme	25,391	66,164	55,617	341,553	57.52	52.36	56.74	4.34	2,005

Tourist areas with a greater number of overnight stays per month *

Isla de Mallorca	74,327	458,102	189,484	3,318,141	54.27	51.30	52.81	6.59	24,650
Costa del Sol	140,186	199,095	376,912	900,624	52.75	54.53	59.97	3.77	10,648
Costa Brava	93,358	157,282	238,757	531,893	49.39	54.58	52.01	3.07	5,420
Costa Daurada	118,130	72,531	291,639	378,437	47.15	54.56	52.12	3.51	4,465
Islas de Ibiza-Formentera	20,525	58,260	70,326	439,336	48.49	50.87	50.67	6.47	4,070
Costa de la Luz de Cádiz	94,293	64,085	221,384	264,986	43.35	48.25	51.72	3.07	4,926
Rías Baixas	80,484	14,562	225,200	31,774	40.08	41.51	47.02	2.70	2,668
Costa de Almería	63,432	13,054	186,349	62,657	31.83	39.87	44.27	3.26	2,017

Tourist sites with a greater level of occupancy per month

Benidorm	74,932	70,218	455,137	490,127	77.24	77.79	76.09	6.51	4,943
Arona	7,807	51,122	42,170	381,130	73.93	72.56	78.92	7.18	2,592
San Bartolomé de Tirajana	32,673	82,572	136,157	714,036	72.20	70.89	76.90	7.38	6,937
Adeje	19,625	86,039	76,518	666,643	72.17	72.30	76.21	7.03	6,071
Barcelona	164,597	460,305	307,601	1,168,474	71.12	76.62	81.29	2.36	11,272
Yaiza	14,492	29,440	84,451	249,453	68.90	66.32	74.20	7.60	2,566
Santiago de Compostela	51,075	27,792	106,759	47,891	67.13	74.82	75.05	1.96	1,076
Granada	80,465	78,793	150,769	135,386	65.08	78.19	67.18	1.80	1,951
Madrid	385,551	406,414	669,585	876,738	64.37	72.65	76.53	1.95	12,162
Mogán	4,197	30,548	16,719	226,973	64.09	71.55	76.11	7.01	1,659

Tourist sites with a greater number of overnight stays per month *

Calvià	11,048	97,387	44,797	731,940	58.80	56.61	57.49	7.16	5,218
Palma	41,764	113,810	95,188	539,464	59.10	58.87	64.48	4.08	4,992
Pájara	5,648	54,683	31,972	517,180	62.48	63.34	70.74	9.10	4,226
Salou	39,652	43,340	138,776	265,886	59.93	65.39	62.92	4.88	1,943
Lloret de Mar	23,790	63,137	99,146	297,139	63.66	65.18	68.82	4.56	1,957
Sevilla	95,829	88,340	171,942	189,437	62.32	70.31	67.42	1.96	2,845
Torremolinos	28,041	42,059	90,917	242,659	59.31	60.61	65.08	4.76	2,233
Sant Llorenç des Cardassar	2,852	36,760	6,659	304,099	46.70	47.92	46.33	7.84	2,125
Valencia	78,806	62,082	152,885	147,676	57.21	65.23	68.51	2.13	2,186
Alcúdia	1,346	35,028	6,667	290,512	53.93	52.55	54.66	8.17	1,988

* Not taken into account those included in the preceding table because they are in the bigger level of occupancy tables too.

4. Travellers, overnight stays and average stay

Results by Autonomous Communities and provinces

Provinces	Number of travellers			Overnight stays			Average stay
	Total	Residents in Spain	Residents abroad	Total	Residents in Spain	Residents abroad	
TOTAL	7,665,545	4,176,359	3,489,186	23,910,148	9,273,098	14,637,050	3.12
Andalucía	1,344,928	766,706	578,222	3,590,201	1,723,328	1,866,873	2.67
Almería	81,398	67,552	13,846	261,378	196,954	64,423	3.21
Cádiz	204,156	121,463	82,692	571,773	268,859	302,914	2.80
Córdoba	92,184	56,757	35,427	148,942	95,727	53,215	1.62
Granada	204,829	118,802	86,027	428,230	261,608	166,623	2.09
Huelva	80,986	62,953	18,033	268,480	172,242	96,238	3.32
Jaén	53,652	46,508	7,144	89,592	79,078	10,514	1.67
Málaga	382,808	161,744	221,064	1,353,883	411,520	942,363	3.54
Sevilla	244,917	130,927	113,989	467,923	237,341	230,583	1.91
Aragón	198,354	166,669	31,685	387,893	327,897	59,996	1.96
Huesca	45,087	38,749	6,338	95,716	83,645	12,071	2.12
Teruel	34,417	31,010	3,407	64,261	58,422	5,839	1.87
Zaragoza	118,850	96,910	21,940	227,915	185,829	42,085	1.92
Asturias (Principado de)	132,433	115,652	16,781	264,968	236,604	28,363	2.00
Balears (Illes)	649,125	113,398	535,727	4,263,829	338,563	3,925,265	6.57
Canarias	651,350	197,490	453,860	4,448,052	768,603	3,679,448	6.83
Palmas (Las)	366,628	104,899	261,729	2,673,001	437,246	2,235,755	7.29
Santa Cruz de Tenerife	284,722	92,590	192,131	1,775,050	331,357	1,443,693	6.23
Cantabria	93,839	73,394	20,445	212,154	173,035	39,119	2.26
Castilla y León	422,599	345,540	77,059	723,739	605,183	118,556	1.71
Ávila	32,387	27,258	5,129	55,675	47,631	8,043	1.72
Burgos	68,924	50,013	18,911	112,236	87,460	24,776	1.63
León	71,214	61,686	9,527	119,760	104,659	15,100	1.68
Palencia	18,987	15,875	3,112	32,369	27,818	4,551	1.70
Salamanca	89,019	67,175	21,845	165,172	132,088	33,084	1.86
Segovia	38,960	32,110	6,850	68,362	56,406	11,956	1.75
Soria	20,286	18,851	1,435	37,262	35,019	2,243	1.84
Valladolid	60,573	52,418	8,155	97,827	82,940	14,887	1.62
Zamora	22,249	20,154	2,095	35,076	31,162	3,915	1.58
Castilla-La Mancha	198,671	164,957	33,714	353,224	299,640	53,584	1.78
Albacete	32,680	29,681	2,999	75,304	69,190	6,114	2.30
Ciudad Real	38,385	32,875	5,510	72,252	63,218	9,034	1.88
Cuenca	32,593	28,605	3,988	54,726	48,422	6,305	1.68
Guadalajara	22,753	19,876	2,877	39,587	34,467	5,121	1.74
Toledo	72,260	53,920	18,340	111,354	84,344	27,011	1.54
Cataluña	1,450,330	588,628	861,702	3,849,245	1,216,225	2,633,020	2.65
Barcelona	930,477	304,328	626,149	2,275,878	558,304	1,717,574	2.45
Girona	270,827	114,244	156,583	799,174	272,050	527,125	2.95
Lleida	58,365	51,926	6,440	104,117	94,233	9,884	1.78
Tarragona	190,660	118,130	72,531	670,075	291,639	378,437	3.51
Comunitat Valenciana	607,587	387,956	219,631	2,053,500	1,182,480	871,020	3.38
Alicante	295,434	175,265	120,169	1,282,027	658,900	623,128	4.34
Castellón	82,256	61,442	20,814	251,851	184,313	67,538	3.06
Valencia	229,898	151,249	78,649	519,621	339,267	180,354	2.26
Extremadura	111,640	94,392	17,248	208,066	179,929	28,137	1.86
Badajoz	52,518	42,546	9,972	93,216	77,582	15,634	1.77
Cáceres	59,122	51,846	7,275	114,850	102,347	12,503	1.94
Galicia	365,739	290,411	75,328	778,164	639,586	138,578	2.13
Coruña (A)	173,965	127,609	46,356	340,985	255,991	84,993	1.96
Lugo	55,149	45,202	9,947	87,681	74,545	13,136	1.59
Ourense	29,197	26,478	2,719	55,145	49,969	5,176	1.89
Pontevedra	107,429	91,123	16,306	294,354	259,081	35,273	2.74
Madrid (Comunidad de)	994,693	538,941	455,752	1,879,206	908,864	970,342	1.89
Murcia (Región de)	93,591	74,436	19,155	234,239	184,937	49,302	2.50
Navarra (Comunidad Foral de)	70,968	56,609	14,359	140,262	113,071	27,190	1.98
País Vasco	216,027	148,563	67,463	401,310	273,401	127,909	1.86
Álava	32,935	25,251	7,684	57,686	44,039	13,647	1.75
Guipúzcoa	83,260	55,420	27,840	162,974	111,677	51,297	1.96
Vizcaya	99,832	67,892	31,940	180,650	117,685	62,964	1.81
Rioja (La)	53,251	44,239	9,012	98,389	81,435	16,954	1.85
Ceuta	6,163	4,777	1,386	12,780	10,497	2,283	2.07
Melilla	4,256	3,601	655	10,929	9,819	1,110	2.57

5. Establishment, capacity, occupancy and employed personnel

Results by Autonomous Communities and provinces

Provinces	Estimated open establishments	Estimated bedplaces	Level of occupancy			Employed personnel
			Per bedplaces	Per bedplaces at weekends	Per rooms	
TOTAL	15,149	1,500,208	50.83	54.44	55.25	199,320
Andalucía	2,410	250,747	45.91	51.36	52.20	32,261
Almería	189	27,146	30.99	38.41	42.55	2,272
Cádiz	423	43,403	42.17	47.06	49.56	5,955
Córdoba	191	10,099	47.28	58.59	52.51	1,279
Granada	395	27,177	50.45	61.22	53.73	3,353
Huelva	144	21,590	39.85	45.07	43.01	2,320
Jaén	191	9,228	31.16	39.60	34.06	1,309
Málaga	552	85,372	50.92	52.91	57.12	11,971
Sevilla	325	26,732	55.96	62.88	60.57	3,801
Aragón	807	37,174	33.45	41.92	39.29	4,246
Huesca	305	12,284	25.04	30.98	28.79	1,173
Teruel	214	6,885	29.77	41.52	32.41	808
Zaragoza	289	18,005	40.60	49.55	48.43	2,265
Asturias (Principado de)	603	24,495	34.79	38.78	37.62	2,937
Balears (Illes)	921	256,689	52.69	50.67	52.14	30,516
Canarias	522	217,603	64.77	65.02	70.06	35,876
Palmas (Las)	254	129,578	65.21	65.05	71.82	20,652
Santa Cruz de Tenerife	268	88,025	64.13	64.97	67.54	15,225
Cantabria	358	16,742	40.64	44.71	42.75	2,337
Castilla y León	1,395	60,261	38.52	47.40	42.78	7,962
Ávila	105	4,943	36.15	49.77	37.41	650
Burgos	220	9,241	38.97	45.83	43.39	1,021
León	278	10,811	35.61	41.32	41.30	1,241
Palencia	96	3,450	30.23	33.74	34.70	357
Salamanca	212	10,976	48.08	61.60	51.61	1,579
Segovia	141	5,955	36.77	47.60	38.94	804
Soria	117	3,829	31.21	38.58	34.42	511
Valladolid	141	7,739	40.70	47.64	48.97	1,192
Zamora	85	3,318	33.85	44.56	35.46	606
Castilla-La Mancha	831	34,547	32.84	40.84	36.57	4,022
Albacete	162	7,031	34.43	43.39	38.18	869
Ciudad Real	181	7,429	31.27	35.38	36.37	838
Cuenca	164	5,620	31.29	39.76	34.38	684
Guadalajara	132	4,807	26.40	32.99	29.38	435
Toledo	192	9,661	37.00	47.70	40.43	1,197
Cataluña	2,025	230,178	53.33	58.43	59.49	28,911
Barcelona	964	118,272	61.60	64.94	69.76	17,135
Girona	520	53,430	47.27	53.69	49.52	5,997
Lleida	285	13,293	25.20	32.74	27.26	1,314
Tarragona	255	45,184	47.15	54.56	52.12	4,465
Comunitat Valenciana	999	123,308	53.13	56.99	55.96	15,014
Alicante	444	68,763	59.32	62.49	60.51	8,340
Castellón	183	18,247	44.19	45.82	42.78	2,044
Valencia	372	36,298	45.89	52.17	53.69	4,630
Extremadura	394	18,289	36.57	42.20	38.23	2,479
Badajoz	161	8,331	35.99	40.56	39.39	1,126
Cáceres	233	9,957	37.06	43.57	37.25	1,352
Galicia	1,551	64,178	38.90	41.83	44.22	7,729
Coruña (A)	656	25,707	42.57	46.24	48.76	2,933
Lugo	296	9,162	30.72	34.78	33.93	975
Ourense	185	6,156	28.75	32.26	30.31	740
Pontevedra	415	23,153	40.77	42.27	46.98	3,080
Madrid (Comunidad de)	1,188	102,160	58.97	67.03	69.92	15,250
Murcia (Región de)	190	17,906	41.97	48.43	46.14	2,495
Navarra (Comunidad Foral de)	271	11,511	39.12	41.51	45.20	1,649
País Vasco	512	26,381	48.72	57.26	57.67	4,414
Álava	79	4,203	43.68	53.53	49.30	652
Guipúzcoa	233	10,046	51.87	62.46	59.06	1,775
Vizcaya	200	12,131	47.85	54.24	59.45	1,987
Rioja (La)	146	6,264	50.38	63.30	55.81	872
Ceuta	15	926	44.52	42.87	54.95	182
Melilla	11	849	41.52	44.85	55.56	169

6. Percentage distribution of Spanish travellers in each province by Autonomous Community of origin

Results by provinces

(Continued)

Provincias	Total	Andalucía	Aragón	Asturias (P. de)	Balears (Illes)	Canarias	Cantabria	Castilla y León	Castilla-La Mancha	Cataluña
TOTAL	100	16.97	2.53	2.50	2.15	2.91	1.43	5.13	3.45	16.86
Álava	100	5.12	3.90	2.71	1.34	0.38	2.27	5.93	2.10	14.25
Albacete	100	7.78	1.35	0.61	0.52	0.66	0.41	3.09	20.65	7.64
Alicante	100	5.95	1.95	1.40	0.84	0.60	0.71	3.90	8.68	6.80
Almería	100	49.32	1.23	0.44	0.61	0.33	0.15	1.98	2.75	4.68
Asturias	100	5.76	1.19	12.65	1.94	1.77	3.65	10.37	2.61	6.96
Ávila	100	11.59	2.75	2.66	1.11	2.00	1.52	10.58	3.94	4.84
Badajoz	100	26.24	1.04	1.30	0.75	0.64	0.96	4.45	4.36	4.45
Balears (Illes)	100	7.63	0.38	1.27	34.49	0.49	0.42	0.62	0.60	25.63
Barcelona	100	6.44	2.51	1.11	2.52	2.07	0.79	1.86	1.56	42.30
Burgos	100	5.30	2.85	4.19	0.84	0.79	2.52	14.91	2.80	10.81
Cáceres	100	20.88	1.96	1.62	0.67	0.70	1.67	6.94	3.73	4.83
Cádiz	100	59.20	0.73	1.52	0.77	1.09	1.07	2.86	2.66	4.85
Cantabria	100	7.92	2.21	5.73	0.57	1.38	7.22	10.17	3.85	9.27
Castellón	100	4.42	2.27	0.90	0.60	0.65	0.41	2.48	3.90	20.15
Ciudad Real	100	16.13	1.37	1.39	0.57	1.09	0.77	4.40	13.87	5.24
Córdoba	100	47.31	1.40	0.80	0.64	0.95	0.60	4.03	4.04	6.58
Coruña (A)	100	7.15	1.68	4.95	1.72	1.76	2.66	7.08	3.07	9.57
Cuenca	100	8.35	1.80	2.31	0.55	0.59	0.51	4.16	11.93	10.32
Girona	100	3.15	0.66	1.50	0.51	0.81	1.54	1.29	0.71	76.58
Granada	100	49.95	0.56	0.73	0.70	1.08	0.44	2.52	3.10	6.05
Guadalajara	100	6.46	3.75	0.75	0.27	0.55	1.24	5.18	19.32	12.00
Guipúzcoa	100	4.59	4.32	3.04	1.20	1.50	1.83	6.74	2.48	21.07
Huelva	100	60.48	0.70	0.46	0.74	2.01	0.45	2.90	4.34	4.69
Huesca	100	4.13	23.61	1.19	0.45	0.25	0.64	2.89	1.63	30.20
Jaén	100	50.72	1.21	0.41	0.87	0.71	0.33	1.66	3.20	7.61
León	100	4.70	1.98	10.79	0.93	0.70	2.67	19.63	2.16	4.37
Lleida	100	1.85	3.38	0.29	0.74	0.32	0.26	1.25	0.50	79.15
Lugo	100	3.72	1.19	7.02	0.80	1.63	2.12	6.62	2.33	5.53
Madrid	100	14.82	2.65	2.86	2.11	3.35	2.06	5.15	2.94	13.35
Málaga	100	58.02	0.97	0.74	0.66	0.93	0.35	3.00	2.33	4.77
Murcia	100	14.13	1.26	1.09	1.62	1.14	0.39	2.16	5.31	8.46
Navarra	100	4.50	5.33	2.45	0.48	0.81	1.90	4.67	2.11	18.93
Ourense	100	2.34	0.50	3.53	0.45	0.36	1.01	6.26	3.02	5.63
Palencia	100	4.75	2.05	5.39	0.52	0.67	4.76	26.60	2.35	5.85
Palmas (Las)	100	5.09	0.60	1.73	0.85	31.75	0.76	1.27	1.84	7.31
Pontevedra	100	9.36	0.91	6.26	1.32	2.08	1.75	10.48	5.23	7.38
Rioja (La)	100	5.72	4.92	4.31	1.11	1.21	2.48	4.93	2.22	20.00
Salamanca	100	12.38	1.09	3.46	1.20	2.03	2.61	17.08	3.80	4.96
S. C. Tenerife	100	19.69	0.71	1.01	0.89	32.80	1.05	3.38	0.42	3.93
Segovia	100	7.72	2.57	1.64	0.49	0.83	1.20	16.48	7.20	7.25
Sevilla	100	42.99	1.34	0.73	0.94	1.89	0.59	3.42	2.53	9.64
Soria	100	3.32	5.44	0.77	0.16	0.39	1.49	15.25	3.53	16.02
Tarragona	100	4.92	5.31	0.53	1.30	0.66	0.79	1.37	1.56	59.17
Teruel	100	4.34	14.12	0.77	1.09	0.30	0.92	1.54	3.58	21.35
Toledo	100	14.69	2.37	2.53	0.57	0.77	0.83	6.87	14.60	5.85
Valencia	100	8.13	2.64	1.43	2.15	1.30	0.78	3.24	3.81	15.29
Valladolid	100	7.18	1.65	3.79	0.58	1.01	2.12	19.87	3.24	7.05
Vizcaya	100	5.03	2.61	3.86	1.83	1.24	2.45	5.54	1.49	15.23
Zamora	100	12.73	3.21	4.13	0.27	0.51	2.56	11.17	3.82	5.23
Zaragoza	100	6.37	13.20	2.53	1.26	1.05	1.84	4.39	2.90	22.47
Ceuta	100	57.60	0.13	0.09	1.26	0.81	-	0.81	0.00	2.99
Melilla	100	68.43	0.63	0.33	0.12	0.72	0.10	1.49	0.98	3.39

6. Percentage distribution of Spanish travellers in each province by Autonomous Community of origin

Results by provinces

(Conclusion)

Provinces	Comunitat Valenciana	Extremadura	Galicia	Madrid (C. de)	Murcia (Región de)	Navarra (C. Foral de)	País Vasco	Rioja (La)	Ceuta y Melilla
TOTAL	9.48	1.75	5.11	19.83	2.29	1.27	5.19	0.71	0.44
Álava	3.86	0.86	4.72	23.11	0.72	3.50	24.21	0.89	0.11
Albacete	23.85	0.87	2.32	19.14	8.30	0.67	1.70	0.32	0.12
Alicante	38.40	1.23	1.51	17.23	3.52	1.45	4.78	0.75	0.31
Almería	11.73	0.50	0.78	11.34	11.92	0.64	1.10	0.09	0.42
Asturias	5.04	2.13	10.20	22.59	0.80	1.82	9.64	0.77	0.13
Ávila	8.32	2.92	5.01	35.38	1.49	1.26	4.02	0.31	0.31
Badajoz	6.98	16.75	3.32	22.97	1.12	0.55	3.34	0.57	0.20
Balears (Illes)	5.15	0.09	0.97	20.06	0.44	0.06	1.52	0.12	0.06
Barcelona	6.86	0.96	2.84	19.91	1.05	1.11	4.72	0.71	0.69
Burgos	5.50	1.93	5.23	25.54	1.39	2.11	11.99	1.24	0.07
Cáceres	5.87	11.28	3.49	28.25	1.61	1.02	4.60	0.46	0.41
Cádiz	3.20	2.21	1.60	12.21	1.13	0.58	2.71	0.19	1.44
Cantabria	3.67	1.10	5.60	22.00	1.17	2.08	14.06	1.93	0.08
Castellón	45.99	0.29	0.85	11.46	1.90	1.39	2.00	0.21	0.14
Ciudad Real	9.28	2.95	2.64	28.81	3.52	0.52	3.90	0.56	2.99
Córdoba	5.02	2.80	1.30	18.85	2.07	0.42	2.48	0.21	0.49
Coruña (A)	4.28	1.41	26.70	20.58	0.93	0.97	4.77	0.60	0.12
Cuenca	20.99	1.93	2.30	24.69	4.43	2.20	2.48	0.39	0.06
Girona	3.76	0.15	1.79	5.02	0.55	0.18	1.72	0.01	0.08
Granada	8.36	1.24	1.19	16.20	4.31	0.47	1.88	0.56	0.66
Guadalajara	8.91	2.13	3.62	28.88	2.04	1.11	3.12	0.59	0.10
Guipúzcoa	4.98	0.72	3.22	19.50	0.65	3.21	19.65	1.25	0.04
Huelva	3.97	2.96	1.88	10.00	0.84	0.42	2.33	0.26	0.58
Huesca	6.91	1.29	1.43	15.71	0.43	2.55	5.20	1.48	-
Jaén	9.40	1.86	1.31	15.11	3.36	0.48	1.25	0.25	0.27
León	3.52	0.76	14.80	21.85	0.67	1.72	7.23	1.49	0.04
Lleida	2.75	0.27	0.71	5.13	0.49	0.54	2.11	0.19	0.06
Lugo	3.08	1.66	43.38	13.53	1.22	1.21	4.35	0.59	0.01
Madrid	9.48	2.18	4.62	22.93	2.68	1.49	5.20	1.22	0.91
Málaga	3.78	2.04	1.26	14.77	2.45	0.63	1.98	0.12	1.20
Murcia	17.82	0.53	1.88	18.31	22.98	0.91	1.58	0.24	0.21
Navarra	6.50	1.24	3.44	18.81	1.54	9.36	16.23	1.67	0.05
Ourense	2.58	0.89	53.97	15.16	0.47	1.17	2.25	0.27	0.13
Palencia	2.89	1.92	9.39	20.23	1.12	0.89	9.75	0.77	0.11
Palmas (Las)	2.08	0.28	1.94	39.78	0.19	0.79	2.65	0.85	0.25
Pontevedra	5.46	1.65	23.07	18.44	1.21	0.52	4.08	0.76	0.05
Rioja (La)	8.20	1.93	3.39	19.29	1.07	2.61	13.78	2.76	0.08
Salamanca	5.97	3.63	6.83	25.70	0.78	1.45	6.15	0.83	0.07
S. C. Tenerife	1.22	0.27	2.29	27.81	0.28	0.37	3.55	0.27	0.06
Segovia	7.47	1.92	3.35	33.27	1.91	1.14	4.78	0.47	0.30
Sevilla	4.78	3.56	1.89	19.97	1.71	0.62	2.68	0.35	0.37
Soria	5.93	0.69	5.89	27.43	0.44	2.28	9.95	0.92	0.11
Tarragona	8.44	0.65	0.95	6.27	0.93	1.38	4.81	0.71	0.23
Teruel	32.00	0.70	0.65	11.68	1.72	1.27	3.40	0.41	0.16
Toledo	8.18	3.01	3.87	25.47	2.50	1.01	6.00	0.56	0.33
Valencia	28.53	0.90	1.83	21.49	3.76	0.96	2.98	0.65	0.13
Valladolid	5.02	1.32	7.12	30.98	0.95	1.30	6.06	0.66	0.09
Vizcaya	3.99	0.91	3.88	23.71	0.68	2.90	23.47	1.12	0.05
Zamora	6.16	3.51	12.69	25.25	1.40	1.19	5.46	0.45	0.26
Zaragoza	8.64	0.61	2.38	21.33	1.42	2.24	5.95	1.15	0.27
Ceuta	1.37	1.21	0.09	21.47	2.07	0.31	0.36	0.36	9.07
Melilla	1.81	0.67	0.71	11.39	0.81	0.39	0.41	0.28	7.35

7. Percentage distribution of overnight stays in each province by Autonomous Community of origin

Results by provinces

(Continued)

Provinces	Total	Andalucía	Aragón	Asturias (P. de)	Balears (Illes)	Canarias	Cantabria	Castilla y León	Castilla-La Mancha	Cataluña
TOTAL	100	16.49	2.53	2.65	2.07	3.25	1.51	5.49	3.67	15.81
Álava	100	6.37	3.85	3.08	1.12	0.35	2.06	6.38	2.09	14.09
Albacete	100	9.49	0.91	0.37	0.61	0.53	0.21	2.37	27.87	7.01
Alicante	100	5.92	2.35	3.59	0.44	1.69	2.36	6.88	7.45	5.80
Almería	100	45.95	1.41	0.60	0.64	0.23	0.13	2.93	2.16	5.45
Asturias	100	8.17	1.16	11.20	2.65	2.13	3.41	9.46	3.46	7.11
Ávila	100	12.91	2.25	2.96	1.06	2.50	1.38	11.10	3.68	5.33
Badajoz	100	28.77	1.06	1.00	0.68	0.61	1.22	4.26	4.33	4.79
Balears (Illes)	100	8.54	0.36	1.62	24.51	0.80	0.46	0.72	0.48	31.06
Barcelona	100	7.35	2.41	1.16	2.40	2.21	0.83	2.01	1.46	40.06
Burgos	100	6.43	2.23	3.46	0.88	0.63	1.90	18.72	2.50	9.79
Cáceres	100	19.88	2.32	1.55	0.53	0.63	1.32	6.76	3.20	5.76
Cádiz	100	54.41	1.28	1.55	0.60	0.86	1.10	4.68	3.38	5.17
Cantabria	100	9.75	2.11	4.66	0.50	1.20	6.18	9.01	5.37	9.58
Castellón	100	3.53	2.62	1.08	0.36	0.82	0.33	4.21	4.03	18.10
Ciudad Real	100	17.25	1.12	1.15	0.44	1.29	0.61	3.36	16.84	5.04
Córdoba	100	45.57	1.65	1.17	0.62	1.02	0.64	3.63	4.02	7.30
Coruña (A)	100	7.56	1.57	4.20	1.49	2.35	2.97	6.55	2.97	9.42
Cuenca	100	10.11	1.71	1.39	0.57	0.44	0.47	3.52	12.06	11.68
Girona	100	4.29	0.80	2.84	0.56	1.51	4.28	2.44	0.67	60.59
Granada	100	46.51	0.70	0.96	0.69	1.17	0.48	3.84	3.00	6.55
Guadalajara	100	6.38	3.48	0.90	0.21	0.41	0.97	4.85	19.29	9.41
Guipúzcoa	100	5.08	4.33	2.39	1.33	2.36	1.59	6.15	2.23	22.36
Huelva	100	51.06	0.82	0.84	1.33	1.60	0.74	4.01	5.86	5.61
Huesca	100	3.81	23.58	1.45	0.38	0.88	0.64	2.57	2.26	30.08
Jaén	100	49.76	1.16	0.59	1.18	0.81	0.36	1.81	3.02	7.09
León	100	4.37	2.18	9.50	0.85	0.74	2.32	26.10	2.28	3.65
Lleida	100	2.39	2.83	0.23	0.59	0.41	0.33	1.27	0.73	79.75
Lugo	100	3.77	0.91	6.88	0.64	1.25	2.02	6.27	1.86	5.12
Madrid	100	15.21	2.47	3.22	2.26	4.08	2.08	5.44	3.04	13.37
Málaga	100	50.82	1.41	1.60	0.73	1.45	0.34	3.88	3.31	4.18
Murcia	100	15.04	1.78	1.14	2.40	1.05	0.42	2.68	5.83	10.69
Navarra	100	3.96	4.98	2.07	0.47	1.07	1.64	3.92	2.10	20.26
Ourense	100	2.42	0.45	4.10	0.42	0.29	0.79	6.93	3.73	6.15
Palencia	100	8.34	2.04	5.52	0.34	0.61	4.46	25.71	2.82	6.30
Palmas (Las)	100	5.56	0.73	2.38	0.60	21.31	1.22	1.81	1.89	7.33
Pontevedra	100	9.28	0.78	5.62	1.78	2.29	1.43	10.99	6.73	6.34
Rioja (La)	100	5.75	4.47	4.25	1.21	1.87	3.83	5.14	2.59	17.87
Salamanca	100	11.14	1.07	3.91	1.34	1.86	2.08	20.73	3.29	5.51
S. C. Tenerife	100	19.56	1.01	2.14	0.94	20.35	0.95	3.88	0.53	7.13
Segovia	100	9.48	3.00	1.78	0.57	0.64	1.13	16.02	7.60	7.30
Sevilla	100	37.47	1.42	0.96	1.10	2.20	0.64	4.19	2.78	11.01
Soria	100	4.20	5.50	0.68	0.08	0.25	1.28	17.79	3.99	14.28
Tarragona	100	6.42	6.81	0.91	1.42	0.75	0.96	2.35	2.49	51.45
Teruel	100	3.79	17.45	0.60	0.81	0.48	0.94	1.54	3.86	21.60
Toledo	100	15.81	2.59	3.33	0.76	0.79	0.73	6.56	13.74	6.79
Valencia	100	8.23	2.85	2.32	2.19	1.53	0.75	4.61	3.16	15.43
Valladolid	100	8.40	1.66	3.25	0.62	0.85	1.75	18.11	2.88	6.79
Vizcaya	100	6.21	2.95	3.91	2.34	1.50	1.91	6.28	1.65	16.47
Zamora	100	12.67	2.42	4.52	0.33	0.35	2.89	13.32	4.50	4.92
Zaragoza	100	6.30	14.63	2.42	1.34	1.05	1.77	5.06	3.26	21.16
Ceuta	100	56.06	0.24	0.08	2.84	1.22	-	1.01	0.65	3.49
Melilla	100	71.47	0.69	0.13	0.05	0.50	0.33	1.12	0.76	3.15

7. Percentage distribution of overnight stays in each province by Autonomous Community of origin

Results by provinces

(Conclusion)

Provincias	Comunitat Valenciana	Extremadura	Galicia	Madrid (C. de)	Murcia (Región de)	Navarra (C. Foral de)	País Vasco	Rioja (La)	Ceuta y Melilla
TOTAL	9.65	1.71	5.01	20.20	2.11	1.31	5.44	0.70	0.39
Álava	3.98	0.74	6.43	21.88	1.00	3.24	22.19	0.98	0.16
Albacete	19.95	0.77	1.45	19.00	7.24	0.56	1.36	0.19	0.10
Alicante	27.14	0.81	1.51	19.36	1.93	2.38	8.77	1.38	0.24
Almería	11.98	0.31	1.40	14.33	9.36	1.04	1.68	0.16	0.25
Asturias	5.36	1.82	8.69	22.74	0.80	1.77	9.29	0.66	0.13
Ávila	9.97	2.81	4.78	32.42	1.23	1.32	3.74	0.28	0.28
Badajoz	8.17	16.02	3.09	21.07	1.01	0.38	2.90	0.52	0.13
Balears (Illes)	4.39	0.11	2.68	21.44	0.46	0.11	2.02	0.12	0.13
Barcelona	6.96	1.11	3.03	20.76	0.98	1.12	4.92	0.66	0.57
Burgos	7.30	1.48	4.89	24.16	2.03	1.62	10.77	1.16	0.06
Cáceres	9.54	12.25	3.45	25.11	2.00	0.89	4.10	0.33	0.39
Cádiz	3.30	2.10	1.85	11.53	1.09	1.32	3.72	0.45	1.64
Cantabria	4.14	1.62	6.20	23.67	1.55	1.65	10.16	2.59	0.06
Castellón	42.43	0.20	1.26	14.01	1.11	1.55	3.95	0.36	0.06
Ciudad Real	8.35	2.81	2.42	29.43	3.66	0.37	3.24	0.48	2.13
Córdoba	5.58	2.95	1.39	18.71	1.95	0.54	2.57	0.20	0.49
Coruña (A)	3.93	1.23	29.13	18.81	0.88	0.97	5.32	0.53	0.12
Cuenca	21.80	1.77	2.01	23.46	4.27	1.56	2.73	0.37	0.07
Girona	5.93	0.18	3.92	7.42	2.15	0.27	2.01	0.09	0.04
Granada	8.89	1.14	1.59	16.97	4.00	0.72	1.85	0.39	0.55
Guadalajara	8.97	2.37	4.05	32.14	2.32	0.88	2.94	0.38	0.05
Guipúzcoa	5.83	0.81	3.03	19.33	0.59	2.73	18.64	1.18	0.06
Huelva	6.28	3.30	2.47	11.14	0.76	0.31	3.27	0.16	0.43
Huesca	8.19	1.69	1.09	15.29	0.34	2.51	4.21	1.02	-
Jaén	9.47	2.03	1.62	15.58	3.37	0.46	1.07	0.18	0.45
León	3.41	0.81	13.31	19.65	0.58	1.37	7.53	1.31	0.04
Lleida	2.76	0.40	0.70	4.78	0.41	0.51	1.70	0.16	0.05
Lugo	2.61	1.29	45.88	14.45	1.40	1.16	3.98	0.48	0.01
Madrid	9.51	2.34	4.97	20.29	2.58	1.59	5.44	1.12	0.99
Málaga	3.78	3.32	1.37	14.10	2.96	0.76	4.97	0.17	0.84
Murcia	15.39	1.09	2.89	19.19	16.34	0.88	2.64	0.27	0.29
Navarra	6.47	1.15	3.30	19.29	1.77	9.15	16.49	1.85	0.05
Ourense	2.49	1.00	48.80	18.26	0.35	0.84	2.56	0.34	0.09
Palencia	2.38	1.57	9.58	19.33	1.78	0.74	7.68	0.69	0.10
Palmas (Las)	2.27	0.27	2.77	45.54	0.16	0.81	3.94	1.04	0.38
Pontevedra	6.74	2.29	21.06	16.59	1.31	0.48	5.45	0.78	0.07
Rioja (La)	7.88	2.00	3.84	19.37	1.34	2.60	13.66	2.27	0.05
Salamanca	5.32	4.93	6.26	24.42	0.80	1.34	5.40	0.52	0.08
S. C. Tenerife	1.54	0.40	3.22	31.51	0.32	1.01	5.20	0.27	0.03
Segovia	9.32	1.65	3.34	28.34	2.14	1.05	5.55	0.35	0.74
Sevilla	5.94	2.99	2.26	20.21	1.95	0.82	3.29	0.42	0.36
Soria	6.87	0.90	6.48	24.41	0.54	2.41	9.46	0.76	0.11
Tarragona	6.36	1.45	1.36	8.29	0.65	1.93	5.53	0.74	0.13
Teruel	28.71	0.42	0.58	13.02	1.67	0.86	3.11	0.38	0.18
Toledo	9.01	3.40	4.03	21.75	2.74	0.91	6.21	0.51	0.36
Valencia	28.66	0.81	1.75	20.36	3.15	0.70	2.87	0.54	0.10
Valladolid	5.97	1.38	7.66	30.99	2.13	1.35	5.56	0.59	0.07
Vizcaya	4.34	1.38	3.95	23.23	0.82	2.45	19.48	1.03	0.09
Zamora	7.24	4.95	10.35	23.83	1.26	0.94	4.91	0.37	0.25
Zaragoza	8.37	0.82	2.44	20.88	2.00	2.04	5.34	0.90	0.22
Ceuta	1.14	1.13	0.04	19.35	3.77	0.24	0.49	0.16	8.11
Melilla	1.26	0.47	1.48	11.88	0.57	0.28	0.28	0.19	5.37

8. Travellers, overnight stays and average stay by country of residence

Results by countries

Countries	Number of travellers		Overnight stays	
	Total	%	Total	%
TOTAL	7,665,545	100.00	23,910,148	100.00
Residents in Spain	4,176,359	54.48	9,273,098	38.78
Residents abroad	3,489,186	45.52	14,637,050	61.22
Total Residents in Spain	3,489,186	100.00	14,637,050	100.00
Total Residents in U.E. (without Spain)	2,561,827	73.42	12,281,190	83.90
- Germany	678,888	19.46	4,330,777	29.59
- Austria	32,599	0.93	119,442	0.82
- Belgium	76,980	2.21	354,008	2.42
- Denmark	51,603	1.48	208,136	1.42
- Finland	29,867	0.86	123,255	0.84
- France	364,814	10.46	974,600	6.66
- Greece	14,236	0.41	37,554	0.26
- Ireland	50,226	1.44	219,653	1.50
- Italy	193,284	5.54	508,033	3.47
- Luxembourg	4,977	0.14	25,124	0.17
- Netherlands	133,815	3.84	584,242	3.99
- Poland	30,047	0.86	116,648	0.80
- Portugal	99,669	2.86	220,566	1.51
- United Kingdom	667,363	19.13	3,930,439	26.85
- Czech Republic	10,528	0.30	40,010	0.27
- Sweden	65,263	1.87	321,617	2.20
- Rest of UE*	57,667	1.65	167,086	1.14
Norway	41,792	1.20	174,334	1.19
Russia	43,353	1.24	184,574	1.26
Switzerland	76,586	2.19	334,950	2.29
Rest of Europe	64,603	1.85	184,127	1.26
Japan	62,748	1.80	100,366	0.69
United States of America	192,501	5.52	409,530	2.80
Rest of America	233,969	6.71	513,436	3.51
African's countries	31,736	0.91	71,999	0.49
Rest of the world	180,069	5.16	382,543	2.61

*Countries included in the Rest of UE: Bulgaria, Cyprus, Slovakia, Slovenia, Estonia, Hungary, Latvia, Lithuania, Malta and Romania

Hotel Price Index (HPI). 2008 Base

October 2010

Provisional data

General Autonomous Communities and national indices

	Index	Interannual variation rate
TOTAL	91.5	-1.4
Andalucía	93.9	-2.4
Aragón	86.2	-3.2
Asturias (Principado de)	96.1	-1.0
Balears (Illes)	89.5	-3.2
Canarias	93.0	-1.0
Cantabria	95.3	-0.3
Castilla y León	94.3	-2.7
Castilla-La Mancha	95.7	-2.2
Cataluña	92.0	1.4
Comunitat Valenciana	90.4	-0.5
Extremadura	94.1	-3.1
Galicia	100.8	1.8
Madrid (Comunidad de)	85.0	-3.4
Murcia (Región de)	84.8	-3.8
Navarra (Comunidad Foral de)	91.6	-3.6
País Vasco	95.8	0.9
Rioja (La)	94.4	-3.3
Ceuta	92.6	1.1
Melilla	103.5	-5.3

National General Index and breakdown by categories

	Index	Interannual variation rate
TOTAL	91.5	-1.4
HOTELS: Gold stars		
Five	85.6	-1.6
Fourth	91.2	-1.6
Three	92.2	-1.4
Two	96.9	-1.7
One	97.4	1.9
HOSTALS: Silver stars		
Three and two	96.2	-1.8
One	95.9	1.2

Indicators on the Profitability of the Hotel Sector

October 2010

Provisional data

ADR and RevPAR for Autonomous Communities and National Total

	ADR (in euros)	Variation Rate variation	RevPar (in euros)	Variation Rate variation
TOTAL	66.2	1.3	36.6	7.3
Andalucía	67.7	0.9	35.3	4.1
Aragón	57.7	-3.0	22.8	-2.7
Asturias (Principado de)	60.1	2.1	22.5	1.7
Balears (Illes)	53.0	-1.3	27.7	0.8
Canarias	70.3	-0.3	49.0	10.1
Cantabria	61.1	1.1	25.6	-5.4
Castilla y León	57.9	-0.4	24.9	2.5
Castilla-La Mancha	60.4	-0.3	22.1	0.7
Cataluña	74.2	6.8	44.3	16.7
Comunitat Valenciana	57.6	3.8	32.3	10.6
Extremadura	58.7	-0.7	22.6	-8.0
Galicia	57.2	6.3	24.7	18.8
Madrid (Comunidad de)	83.3	-4.8	58.4	1.6
Murcia (Región de)	57.5	-0.1	26.3	4.7
Navarra (Comunidad Foral de)	64.4	-7.4	29.1	-12.9
País Vasco	77.6	5.7	45.0	10.2
Rioja (La)	62.0	-4.7	34.6	-4.8
Ceuta	69.9	0.0	39.0	6.1
Melilla	63.5	-7.4	35.3	-11.4

National ADR and RevPar and breakdown by categories

	ADR (in euros)	Variation Rate interannual	RevPar (in euros)	Variation Rate interannual
TOTAL	66.2	1.3	36.6	7.3
HOTELS: Gold stars				
Five	145.3	-0.4	86.1	10.4
Four	73.7	0.6	48.1	8.8
Three	51.8	-2.2	29.5	0.6
Two	49.0	-0.4	21.8	4.3
One	47.1	0.4	17.3	5.2
GUESTHOUSES: Silver stars				
Three and two	44.9	1.1	14.6	-5.9
One	36.1	1.1	11.0	2.0