

Hotel Tourism Short-Term Trends (HOS/HPI/ADR/REVPAR)
October 2011. *Provisional data*

Overnight stays in hotel establishments increase 3.2%* in October, as compared with the same month in 2010

Hotels earn 37.8 euros per available room and invoice an average of 67.0 euros per occupied room

During the month of October, 24.7 million overnight stays were recorded in hotel establishments, indicating a 3.2% increase, as compared with the same month in 2010. Overnight stays by residents decreased 9.3%, while non-resident stays increased 11.1%.

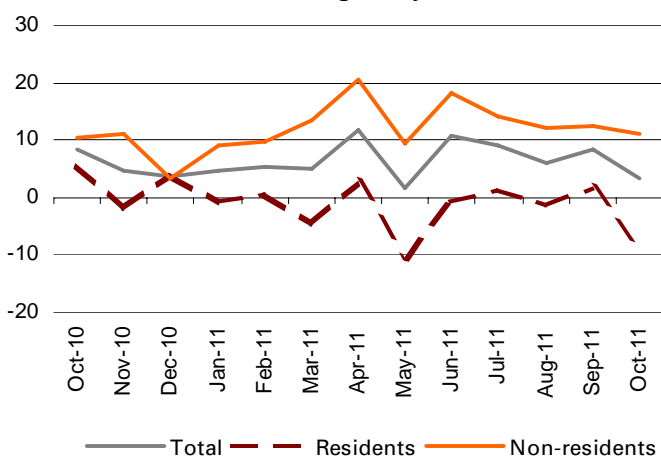
The average stay increased 3.5%, as compared with October 2010, standing at 3.2 nights per guest.

During the first ten months of the year, overnight stays increased 6.9%, as compared with the same period the previous year.

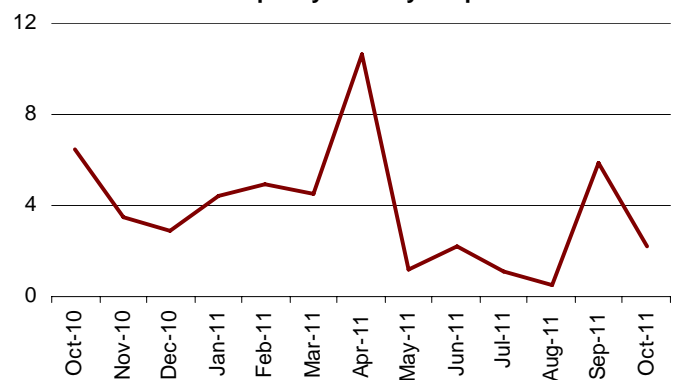
In turn, **the Hotel Price Index (HPI) registered a 0.1% decrease**, this rate being 1.5 points higher than that registered in October 2010. Regarding the indicators on the profitability of the hotel sector, invoicing per occupied room reached an average value of 67.0 euros (0.9 euros more than one year ago), and income per available room stood at 37.8 euros (1.3 euros more).

52.0% of the available bed places were filled in October, with an interannual increase of 2.2%. The weekend occupancy rate by bed places stood at 56.3%, with an increase of 3.5%.

Interannual rates of overnight stays in %



Interannual occupancy rates by bedplaces in %



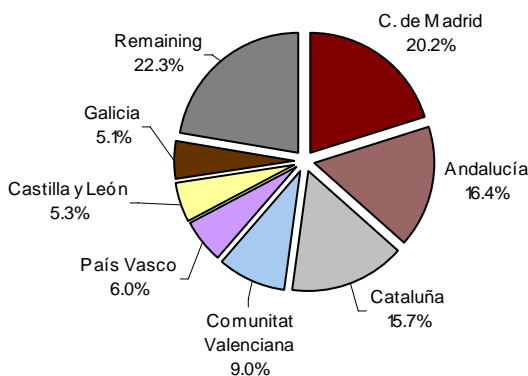
* Due to the update made in the in the directory of hotel establishments in Comunidad Foral de Navarra and Extremadura, the data published for those Communities and the national total cannot be directly compared. To bridge this gap in the series, some linking coefficients have been calculated to allow users to compare data from different years. The coefficients are published monthly on the INE website in the section dedicated to this statistical operation, in a specific section entitled linking coefficients.

Overnight stays of guests resident abroad

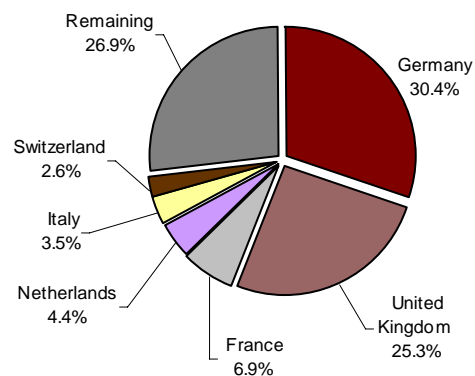
Guests from Germany and the United Kingdom made more than nine million overnight stays in October. The German market experienced an interannual increase of 14.0%, while the British market grew 5.3%.

Overnight stays of guests from France, Netherlands and Italy (the following countries of origin) presented interannual rates of 15.4%, 21.7% and 10.9% respectively.

Overnight stays of guests resident in Spain by Autonomous Community of origin in %



Overnight stays of guests resident abroad by country of origin in %

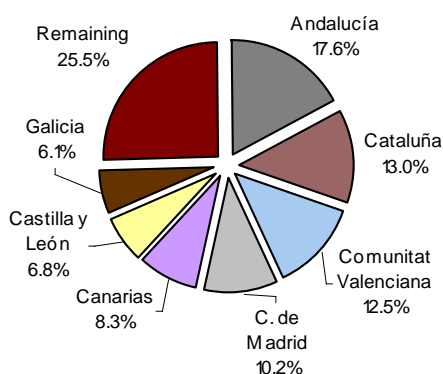


Main destinations

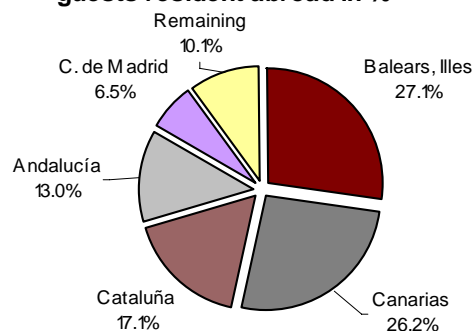
The main destination chosen by non-residents was Illes Balears. In this Autonomous Community, overnight stays by foreign nationals grew 13.2%. It was followed by Canarias, with an interannual rate of 14.0%, and Cataluña, with an increase of 5.9%.

Andalucía, Cataluña and Comunitat Valenciana were the main destinations of guests resident in Spain, with interannual rates for overnight stays of -14.5%, -8.9% and -10.4%, respectively.

Distribution of overnight stays of guests resident in Spain in %



Distribution of overnight stays of guests resident abroad in %



Results by Autonomous Community, tourist area and tourist site

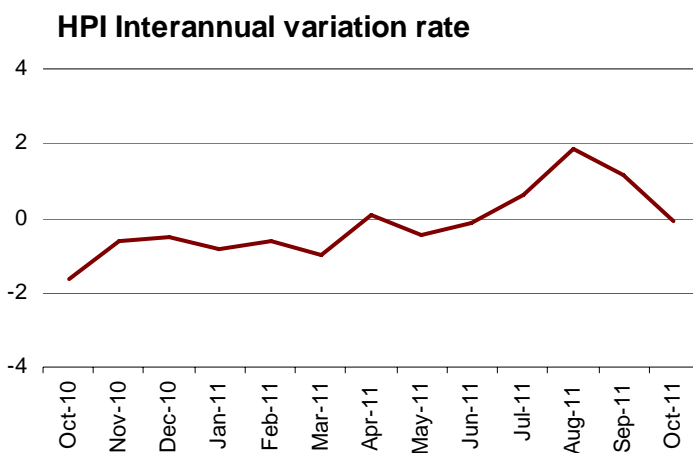
Canarias was the Autonomous Community with the highest occupancy rate by bed places during the month of October (70.7%). It was followed by Comunidad de Madrid (58.7%) and Illes Balears (57.1%).

The tourist areas with the highest occupancy and overnight stay rates were located on the islands and the coasts. Barcelona recorded the highest occupancy rate by bedplaces (72.9%) and the highest weekend occupancy rate by bed places (78.7%). Mallorca registered more than 3.8 million overnight stays in October.

The tourist sites with the highest number of overnight stays were Madrid, Barcelona and Benidorm. Arona reached the highest occupancy rate by bedplaces (81.5%), while Benidorm reached the highest weekend occupancy (86.8%).

Evolution of the Hotel Price Index

The interannual rate of the HPI stood at -0.1% in October, this rate being 1.3 points lower than that obtained last month, and 1.5 points higher than that registered one year ago.



HPI by Autonomous Community

The four Autonomous Communities (Cataluña, Canarias, Andalucía and Illes Balears) that carried 64.2% of the total weight of the HPI in the month of October, showed uneven behaviour as compared with September 2011.

Cataluña, which carried the greatest load in the weighting structure this month, presented an interannual rate of 0.8%, that is 3.0 points lower than that estimated in September. Hotel prices recorded a variation of 2.8% in Canarias, as compared with the 3.5% recorded the previous month. Andalucía showed an interannual rate of -1.8% , as compared with the -0.3% observed last month. In Illes Balears, the variation was 0.8%, indicating 2.0 points less than in September.

HPI by category

Hotel prices increased in October in one-gold-star (1.9%) and in four-gold-star (0.1%).

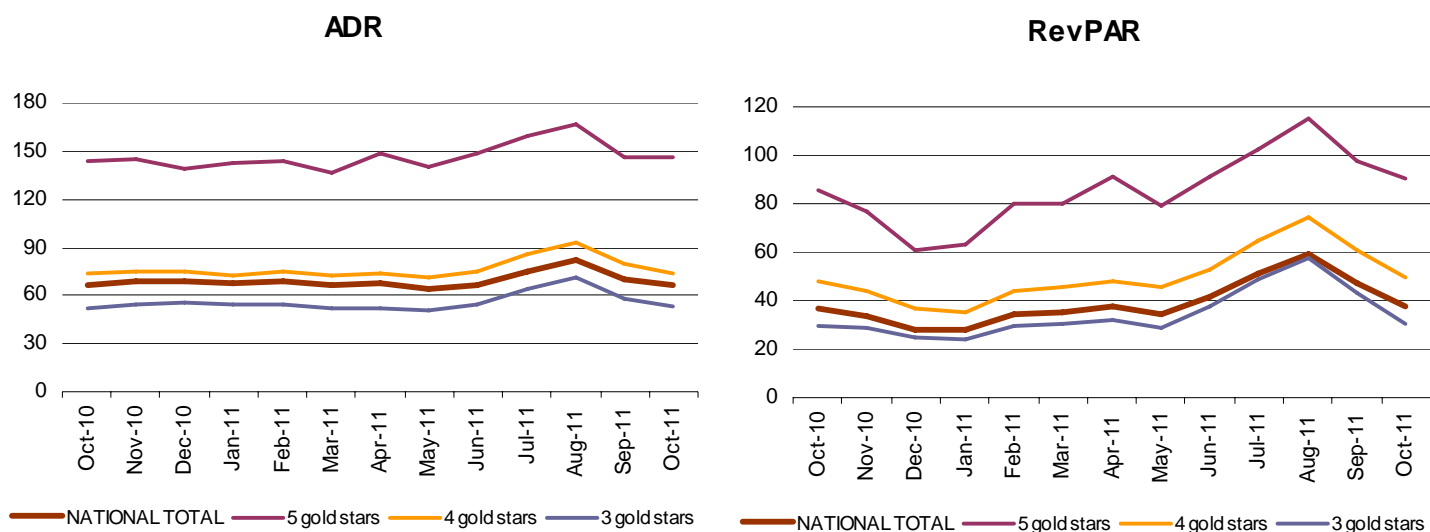
Conversely, the HPI decreased in three and two-silver-star hotels (3.0%), in five-gold-star hotels (0.4%), two-gold-star hotels and one-silver-star hotels (both 0.2%) and three-gold-star hotels (0.1%).

Indicators on the Profitability of the Hotel Sector

The average invoicing by hotels per occupied room (ADR) in October was 67.0 euros, indicating an increase of 0.9 euros as compared with the same month in 2010.

In turn, income per available room (RevPAR), conditioned by the occupancy registered in the hotel establishments, reached 37.8 euros, with an increase of 1.3 euros.

By category, the average invoicing was 146.4 euros for five-star hotels, 73.7 euros for four-star hotels and 52.6 euros for three-star hotels. Income per available room for these same categories was 90.8, 49.5 and 30.7 euros, respectively.



For further information see INEbase-www.ine.es/en/welcome_en.htm All press releases at: www.ine.es/en/prensa/prensa_en.htm

Press Office: Telephone numbers: 91 583 93 63 / 94 08 – Fax: 91 583 90 87 - gprensa@ine.es

Information Area: Telephone number: 91 583 91 00 – Fax: 91 583 91 58 – www.ine.es/infoine/?L=1

Tourist Accommodation Occupancy Survey (Hotels and similar establishments)

October 2011

Provisional data

1. Travellers, overnight stays and average stay by categories of establishment

Category	Number of travellers			Number of overnight stays			Average stay
	Total	Residents in Spain	Residents abroad	Total	Residents in Spain	Residents abroad	
TOTAL	7,676,616	3,895,484	3,781,132	24,764,874	8,467,324	16,297,550	3.23
HOTELS: Golden stars							
Five	463,696	174,967	288,729	1,439,634	354,147	1,085,486	3.10
Four	3,469,333	1,658,258	1,811,076	11,575,874	3,483,478	8,092,395	3.34
Three	2,292,742	1,123,505	1,169,237	8,215,147	2,611,617	5,603,529	3.58
Two	562,104	360,931	201,173	1,413,923	771,599	642,324	2.52
One	209,997	135,632	74,365	493,641	284,722	208,919	2.35
INNS: Silver stars							
Two and three	378,525	255,337	123,188	867,640	507,048	360,592	2.29
One	300,219	186,854	113,366	759,016	454,713	304,304	2.53
Interannual rate	-0.18	-7.18	8.22	3.21	-9.25	11.12	3.53
Cumulative interannual rate	4.49	-1.03	11.43	6.89	-1.94	13.24	2.29

2. Open establishments, capacity, occupancy and employed personnel by categories of establishment

Category	Estimated open establishments	Estimated bedplaces	Level of occupancy			Employed personnel
			Per bedplaces	Per bedplaces at weekend	Per rooms	
TOTAL	15,334	1,519,077	51.98	56.32	56.61	201,537
HOTELS: Golden stars						
Five	266	83,224	55.30	60.39	62.76	24,416
Four	2,055	617,013	59.69	65.14	67.35	92,209
Three	2,646	465,474	56.27	58.79	58.36	54,651
Two	1,920	119,720	37.93	43.80	42.58	11,082
One	1,185	49,913	31.64	35.85	36.45	4,376
INNS: Silver stars						
Two and three	3,078	97,503	28.57	33.82	32.99	8,097
One	4,183	86,231	28.26	30.58	32.51	6,705
Interannual rate	0.65	0.93	2.22	3.51	2.46	0.56

3. Travellers, overnight stays, occupancy, average stay and employed personnel

Results by areas and tourist sites

	Travellers		Overnight stays		Level of occupancy			Average stay	Employed personnel
	Residents in Spain	Residents abroad	Residents in Spain	Residents abroad	Per bedplac	Per bedplaces	Per rooms at weekend		

Tourist areas with a greater level of occupancy per month

Barcelona	153,825	515,790	291,201	1,321,375	72.94	78.67	82.39	2.41	12,029
Isla de Gran Canaria	50,420	136,771	186,627	1,093,997	72.33	72.43	76.30	6.84	9,954
Isla de Fuerteventura	13,387	104,983	58,179	940,079	72.03	72.89	80.04	8.43	6,820
Isla de Tenerife	70,732	204,597	293,222	1,588,931	71.70	73.17	74.26	6.84	15,302
Isla de Lanzarote	24,292	72,064	140,419	585,517	68.75	69.27	74.43	7.53	5,242
Costa Barcelona-Maresme	18,701	71,604	50,840	356,962	66.03	62.10	63.65	4.52	1,709
Costa Blanca	143,878	142,356	605,814	732,806	65.98	72.58	70.32	4.68	8,355
Costa de Gipuzkoa	36,837	23,157	70,933	43,928	62.39	78.60	71.69	1.91	1,040

Tourist areas with a greater number of overnight stays per month *

Isla de Mallorca	77,488	517,613	220,811	3,662,669	59.19	56.59	57.80	6.53	25,899
Costa del Sol	140,687	222,408	319,004	1,020,949	54.99	59.55	62.88	3.69	10,912
Costa Brava	98,804	165,745	207,230	563,887	48.13	50.58	50.84	2.91	5,506
Islas de Ibiza-Formentera	19,494	81,558	61,226	564,964	54.05	53.29	55.25	6.20	4,415
Costa Daurada	93,434	62,468	223,252	351,591	46.65	54.72	52.59	3.69	3,781
Costa de la Luz de Cádiz	89,932	63,969	207,092	306,796	44.30	51.66	53.46	3.34	4,798
Rías Baixas	69,206	16,120	191,939	30,374	34.27	36.43	38.81	2.61	2,591
Isla de Menorca	9,513	19,802	38,316	181,607	39.32	38.08	40.90	7.50	1,644

Tourist sites with a greater level of occupancy per month

Arona	7,853	52,698	42,775	425,476	81.50	82.22	87.95	7.73	3,079
Benidorm	67,644	83,809	443,433	534,720	80.90	86.77	83.96	6.46	5,319
Adeje	14,655	100,798	73,610	779,720	80.11	78.68	81.90	7.39	6,526
San Bartolomé De Tirajana	26,864	94,184	120,756	817,642	77.84	77.03	80.14	7.75	7,454
Pájara	4,912	70,828	28,062	638,698	74.94	74.77	80.15	8.80	4,818
Yaiza	11,875	36,199	79,303	286,306	73.32	72.21	76.60	7.61	2,654
Barcelona	145,141	498,931	267,109	1,283,028	73.23	79.09	82.33	2.41	11,683
Santanyí	1,934	26,417	5,087	224,298	69.71	74.69	72.04	8.09	1,088
Tías	4,580	22,150	28,376	178,024	69.31	73.87	82.27	7.72	1,504
Santa Margalida	4,108	33,360	13,428	267,277	69.00	67.15	67.93	7.49	1,483

Tourist sites with a greater number of overnight stays per month *

Madrid	370,521	429,150	625,543	964,611	63.85	71.90	77.87	1.99	12,167
Palma	43,348	138,591	85,713	678,330	66.87	64.15	65.84	4.20	5,748
Calvià	8,944	100,207	37,758	694,543	55.72	54.81	55.36	6.71	5,205
Sant Llorenç Des Cardassar	7,250	37,965	47,258	345,480	58.10	54.97	58.63	8.69	2,414
Torremolinos	30,487	54,688	77,037	307,892	64.72	70.06	71.47	4.52	2,487
Sevilla	84,782	106,401	151,293	227,798	66.71	75.99	79.48	1.98	2,792
Lloret De Mar	17,674	66,825	49,678	317,925	62.67	61.26	69.30	4.35	1,797
Salou	33,871	40,732	102,000	250,304	57.81	68.32	67.94	4.72	1,691
Valencia	75,908	67,503	136,462	171,893	57.83	65.81	67.34	2.15	2,155
Alcúdia	1,179	31,678	4,775	301,086	57.09	51.37	52.24	9.31	1,922

* Not taken into account those included in the preceding table because they are in the bigger level of occupancy tables too.

4. Travellers, overnight stays and average stay

Results by Autonomous Cities and Communities and provinces

	Number of travellers			Overnight stays			Average stay
	Total	Residents in Spain	Residents abroad	Total	Residents in Spain	Residents abroad	
TOTAL	7,676,616	3,895,484	3,781,132	24,764,874	8,467,324	16,297,550	3.23
Andalucía	1,347,433	710,818	636,615	3,598,209	1,486,701	2,111,508	2.67
Almería	66,928	52,341	14,587	198,682	127,930	70,753	2.97
Cádiz	195,091	115,014	80,077	592,958	249,807	343,150	3.04
Córdoba	105,252	62,617	42,635	168,364	105,689	62,674	1.60
Granada	203,663	104,725	98,938	434,965	230,812	204,154	2.14
Huelva	72,877	55,048	17,829	239,392	140,448	98,944	3.28
Jaén	49,120	42,310	6,810	82,258	72,015	10,243	1.67
Málaga	403,478	162,211	241,267	1,403,708	353,314	1,050,394	3.48
Sevilla	251,026	116,553	134,473	477,882	206,686	271,196	1.90
Aragón	197,098	165,481	31,618	370,832	314,264	56,568	1.88
Huesca	46,622	38,990	7,631	95,141	79,155	15,986	2.04
Teruel	33,907	30,509	3,398	60,850	54,818	6,032	1.79
Zaragoza	116,569	95,981	20,588	214,841	180,291	34,550	1.84
Asturias, Principado de	122,068	106,281	15,786	242,507	211,916	30,591	1.99
Balears, Illes	725,468	106,495	618,973	4,729,594	320,354	4,409,240	6.52
Canarias	694,491	167,514	526,977	4,968,381	701,136	4,267,245	7.15
Palmas, Las	401,918	88,099	313,818	3,004,818	385,225	2,619,593	7.48
Santa Cruz de Tenerife	292,573	79,414	213,159	1,963,564	315,912	1,647,652	6.71
Cantabria	87,725	69,789	17,937	192,057	156,039	36,018	2.19
Castilla y León	412,015	331,741	80,274	700,574	575,569	125,005	1.70
Ávila	27,637	22,909	4,728	45,872	38,710	7,162	1.66
Burgos	68,385	49,341	19,044	108,260	83,592	24,667	1.58
León	65,902	54,429	11,473	108,499	90,338	18,161	1.65
Palencia	16,500	13,404	3,096	29,737	25,243	4,495	1.80
Salamanca	88,123	65,978	22,145	165,649	132,030	33,618	1.88
Segovia	40,138	32,983	7,155	67,247	54,687	12,560	1.68
Soria	19,141	17,657	1,484	34,459	31,749	2,710	1.80
Valladolid	62,826	54,388	8,437	105,520	89,052	16,468	1.68
Zamora	23,364	20,653	2,711	35,331	30,168	5,163	1.51
Castilla-La Mancha	184,661	153,323	31,338	330,026	276,544	53,482	1.79
Albacete	32,229	29,223	3,006	74,932	67,841	7,091	2.32
Ciudad Real	32,435	28,748	3,687	63,074	57,419	5,655	1.94
Cuenca	32,447	27,728	4,719	51,744	44,634	7,109	1.59
Guadalajara	22,362	20,438	1,925	35,307	32,170	3,137	1.58
Toledo	65,188	47,187	18,002	104,970	74,479	30,490	1.61
Cataluña	1,456,308	549,843	906,465	3,887,767	1,102,597	2,785,169	2.67
Barcelona	939,283	273,081	666,201	2,372,979	525,431	1,847,547	2.53
Girona	286,762	118,105	168,658	806,342	237,021	569,322	2.81
Lleida	60,216	53,482	6,734	106,734	94,128	12,605	1.77
Tarragona	170,047	105,175	64,872	601,712	246,017	355,695	3.54
Comunitat Valenciana	586,226	346,852	239,374	2,048,524	1,056,976	991,549	3.49
Alicante/Alacant	299,514	154,711	144,803	1,363,603	624,877	738,726	4.55
Castellón/Castelló	76,127	59,738	16,390	226,385	164,203	62,182	2.97
Valencia/València	210,585	132,403	78,182	458,537	267,896	190,642	2.18
Extremadura	121,545	103,967	17,578	222,719	197,890	24,829	1.83
Badajoz	61,504	51,432	10,072	106,044	91,952	14,093	1.72
Cáceres	60,041	52,535	7,506	116,674	105,938	10,736	1.94
Galicia	302,651	232,809	69,842	632,550	515,648	116,902	2.09
Coruña, A	127,214	88,856	38,357	249,580	183,815	65,765	1.96
Lugo	50,534	39,521	11,013	79,169	65,280	13,889	1.57
Ourense	28,412	26,289	2,123	51,331	47,487	3,844	1.81
Pontevedra	96,491	78,142	18,348	252,470	219,066	33,404	2.62
Madrid, Comunidad de	988,066	515,128	472,938	1,916,891	864,379	1,052,512	1.94
Murcia, Región de	90,543	71,726	18,818	232,319	175,848	56,471	2.57
Navarra, Comunidad Foral de	78,876	63,226	15,650	155,716	128,890	26,826	1.97
País Vasco	216,222	145,931	70,291	412,876	276,888	135,988	1.91
Araba/Álava	33,823	26,961	6,862	61,677	48,506	13,172	1.82
Bizkaia	102,888	68,282	34,606	194,728	126,196	68,532	1.89
Gipuzkoa	79,510	50,688	28,822	156,470	102,186	54,284	1.97
Rioja, La	53,868	45,747	8,121	97,597	83,904	13,693	1.81
Ceuta	6,379	4,739	1,640	12,160	9,748	2,412	1.91
Melilla	4,972	4,074	898	13,574	12,033	1,541	2.73

5. Establishment, capacity, occupancy and employed personnel

Results by Autonomous Cities and Communities and provinces

	Estimated open establishments	Estimated bedplaces	Level of occupancy			Employed personnel
			Per bedplaces	Per bedplaces at weekends	Per rooms	
TOTAL	15,334	1,519,077	51.98	56.32	56.61	201,537
Andalucía	2,432	252,093	45.71	52.30	53.32	32,197
Almería	173	24,225	26.43	31.72	35.09	2,060
Cádiz	420	44,931	42.20	49.67	50.76	5,898
Córdoba	207	11,043	48.68	58.39	54.14	1,429
Granada	427	28,762	48.48	57.10	51.97	3,346
Huelva	137	21,426	35.73	44.55	42.69	2,416
Jaén	185	9,214	28.69	41.16	33.27	1,210
Málaga	565	86,030	52.28	56.73	59.81	12,266
Sevilla	318	26,461	57.69	63.61	66.38	3,573
Aragón	814	37,385	31.79	42.00	35.51	4,131
Huesca	294	12,115	25.21	33.83	26.17	1,142
Teruel	224	7,246	26.81	40.76	28.23	847
Zaragoza	295	18,024	38.21	47.99	44.07	2,142
Asturias, Principado de	586	24,430	31.88	40.00	36.81	2,663
Balears, Illes	944	262,915	57.12	54.87	56.37	31,958
Canarias	519	222,774	70.69	71.60	75.06	38,272
Palmas, Las	265	134,044	71.33	71.79	77.02	22,016
Santa Cruz de Tenerife	254	88,730	69.71	71.32	72.19	16,255
Cantabria	350	16,809	36.63	41.67	38.28	2,272
Castilla y León	1,400	61,212	36.72	47.18	41.86	7,938
Ávila	95	4,775	30.83	42.47	35.88	606
Burgos	214	9,138	38.03	47.94	43.19	1,046
León	294	11,225	31.08	37.65	36.32	1,297
Palencia	92	3,287	29.10	32.41	34.02	379
Salamanca	222	11,452	46.25	59.41	50.92	1,526
Segovia	139	5,901	36.46	52.59	38.91	787
Soria	114	3,808	29.13	39.25	30.82	488
Valladolid	140	8,126	41.79	51.54	51.42	1,209
Zamora	90	3,498	32.38	45.40	37.73	601
Castilla-La Mancha	858	35,451	29.92	38.53	34.20	3,932
Albacete	178	7,517	32.08	36.53	36.17	912
Ciudad Real	194	7,766	26.13	30.96	31.11	881
Cuenca	163	5,846	28.49	39.95	30.51	642
Guadalajara	139	4,815	23.53	33.82	28.05	398
Toledo	185	9,506	35.43	47.82	40.54	1,099
Cataluña	2,076	229,725	53.95	59.18	60.24	28,850
Barcelona	979	118,410	64.00	68.32	71.88	17,266
Girona	541	54,977	46.65	49.99	49.13	6,019
Lleida	294	13,837	24.80	35.52	26.67	1,371
Tarragona	262	42,501	44.86	53.32	50.66	4,195
Comunitat Valenciana	1,009	121,328	53.92	60.00	58.20	14,689
Alicante/Alacant	453	68,873	63.06	69.77	67.11	8,765
Castellón/Castelló	181	17,227	42.18	48.84	45.56	1,954
Valencia/València	374	35,228	41.77	46.35	46.82	3,970
Extremadura	444	20,306	35.25	43.23	39.12	2,704
Badajoz	206	9,924	34.37	41.72	40.36	1,287
Cáceres	238	10,382	36.08	44.67	37.92	1,417
Galicia	1,539	64,344	31.57	35.13	36.91	7,580
Coruña, A	615	25,198	31.79	36.34	39.38	2,669
Lugo	303	9,462	26.84	30.54	29.42	1,086
Ourense	192	6,269	26.29	30.59	30.18	760
Pontevedra	429	23,415	34.67	36.89	39.11	3,066
Madrid, Comunidad de	1,171	104,660	58.70	66.49	71.26	14,852
Murcia, Región de	187	17,706	41.99	47.14	44.12	2,422
Navarra, Comunidad Foral de	317	13,022	38.39	44.66	45.23	1,711
País Vasco	517	26,894	49.21	59.62	59.20	4,165
Araba/Álava	78	4,425	44.43	55.87	53.77	604
Bizcaia	208	12,856	48.72	57.40	59.62	2,009
Gipuzkoa	231	9,614	52.07	64.32	61.11	1,552
Rioja, La	146	6,316	49.51	65.01	55.11	901
Ceuta	13	855	45.87	48.07	52.52	147
Melilla	11	851	51.41	52.98	60.52	153

6. Percentage distribution of Spanish travellers in each province by Autonomous City and Community of origin

Results by provinces

(Continued)

Provincias	Total	Andalucía	Aragón	Asturias, P. de	Balears, Illes	Canarias	Cantabria	Castilla y León	Castilla-La Mancha	Cataluña
TOTAL	100	17.02	2.70	2.61	2.17	2.85	1.39	5.08	3.30	17.01
Albacete	100	7.97	1.09	0.64	0.70	0.75	0.91	2.91	23.67	9.25
Alicante/Alacant	100	4.66	2.12	0.97	0.46	0.42	0.73	5.40	6.55	8.40
Almería	100	53.89	0.44	0.87	0.62	0.45	0.22	1.86	2.24	4.76
Araba/Álava	100	6.20	3.30	2.43	0.94	1.03	2.04	6.66	2.87	14.23
Asturias	100	5.85	1.81	13.32	1.09	1.83	3.85	10.83	3.21	5.40
Ávila	100	10.40	1.99	1.87	1.59	2.68	1.28	10.51	5.19	3.64
Badajoz	100	26.93	0.97	1.75	1.23	1.56	0.99	4.38	4.79	5.27
Balears, Illes	100	10.45	1.26	4.09	33.13	0.78	0.24	0.92	1.26	20.00
Barcelona	100	8.58	2.46	1.45	3.10	2.05	0.97	2.47	1.72	39.21
Bizkaia	100	5.37	2.85	3.55	1.80	1.55	2.14	5.44	2.11	14.22
Burgos	100	6.50	3.00	3.15	0.58	0.49	3.66	16.11	2.82	10.65
Cáceres	100	21.18	1.27	2.08	0.94	0.82	1.24	7.84	3.97	5.05
Cádiz	100	58.11	1.16	0.91	0.93	1.10	1.45	2.20	2.57	4.19
Cantabria	100	7.17	2.68	5.85	1.05	1.70	8.73	9.64	2.52	8.38
Castellón/Castelló	100	3.02	2.80	1.16	0.54	0.31	0.37	2.63	3.00	20.65
Ciudad Real	100	15.48	1.65	0.85	0.57	0.40	0.31	4.55	17.25	6.18
Córdoba	100	47.41	1.63	0.80	0.59	0.78	0.37	3.04	3.97	7.76
Coruña, A	100	6.19	1.22	5.18	1.23	2.28	1.36	5.72	3.17	11.95
Cuenca	100	9.69	4.12	1.11	0.72	0.49	0.80	5.16	8.20	10.47
Gipuzkoa	100	5.79	4.66	2.78	1.77	0.94	2.00	5.84	2.20	21.24
Girona	100	2.31	1.79	0.79	0.88	0.22	0.11	0.58	0.43	80.14
Granada	100	48.54	1.40	1.57	0.88	0.84	0.55	2.51	2.58	6.85
Guadalajara	100	5.26	1.81	1.10	0.48	0.50	0.93	4.04	19.07	12.09
Huelva	100	61.38	0.94	8.02	1.17	2.07	0.29	1.68	1.40	3.72
Huesca	100	2.13	24.12	1.13	0.86	1.12	1.53	2.80	1.71	29.76
Jaén	100	51.24	0.59	1.33	0.49	0.65	0.45	2.98	4.41	5.45
León	100	5.19	1.76	10.68	0.86	0.83	2.75	20.03	2.14	5.01
Lleida	100	2.10	2.43	0.07	0.53	0.38	0.28	1.58	0.47	79.47
Lugo	100	4.14	0.74	8.63	0.57	1.08	2.31	6.56	1.34	5.67
Madrid	100	15.67	2.68	2.93	2.09	3.78	1.81	4.56	3.29	13.47
Málaga	100	60.43	0.80	0.74	1.96	1.23	0.34	1.86	1.91	5.12
Murcia	100	13.79	2.30	0.83	1.48	0.54	0.46	1.94	3.92	9.58
Navarra	100	3.87	4.75	2.45	0.71	0.85	1.55	6.44	1.66	18.34
Ourense	100	2.04	0.51	3.11	0.29	0.57	0.65	6.39	2.15	4.04
Palencia	100	2.79	2.24	5.54	0.28	0.54	3.77	22.65	2.08	6.78
Palmas, Las	100	7.82	0.62	0.94	0.64	35.63	0.98	1.16	0.57	11.10
Pontevedra	100	6.34	0.96	5.25	1.05	1.41	1.29	11.90	5.28	7.50
Rioja, La	100	4.92	4.12	3.16	0.86	1.18	2.96	6.44	3.14	18.17
Salamanca	100	11.04	1.89	3.26	0.83	1.21	2.71	17.95	4.70	4.71
S. C. Tenerife	100	8.73	0.60	1.16	0.32	30.07	0.97	1.90	1.19	4.37
Segovia	100	8.16	1.84	2.10	0.69	0.96	1.33	11.13	5.10	5.02
Sevilla	100	43.69	1.43	0.90	1.58	2.06	0.91	2.72	1.93	10.03
Soria	100	4.24	7.39	0.73	0.49	0.28	1.62	15.35	4.75	12.03
Tarragona	100	3.06	5.11	0.94	1.24	0.65	0.97	1.34	1.15	60.49
Teruel	100	4.84	12.25	0.66	1.08	0.38	0.49	1.83	3.72	24.12
Toledo	100	14.30	3.54	1.76	0.81	1.28	0.88	5.56	14.08	5.95
Valencia/València	100	7.40	2.55	1.18	2.04	1.53	0.69	3.23	4.03	14.29
Valladolid	100	7.93	1.80	3.51	0.59	1.06	2.77	19.60	3.20	7.71
Zamora	100	6.76	1.66	4.91	0.42	0.79	2.21	17.78	2.01	3.02
Zaragoza	100	6.60	14.03	1.98	0.56	0.87	1.36	5.07	2.96	22.71
Ceuta	100	56.30	0.20	0.61	1.02	0.61	1.74	1.23	1.23	1.53
Melilla	100	61.87	0.47	0.48	-	1.00	0.16	1.60	2.24	3.72

6. Percentage distribution of Spanish travellers in each province by Autonomous City and Community of origin

Results by provinces

(Conclusion)

Provinces	Comunitat Valenciana	Extremadura	Galicia	Madrid, C. de	Murcia, Región de	Navarra, C. Foral de	País Vasco	Rioja, La	Ceuta	Melilla
TOTAL	9.08	1.70	5.15	19.73	2.23	1.34	5.52	0.71	0.25	0.14
Albacete	20.23	1.59	1.67	18.04	7.47	0.86	1.46	0.58	0.06	0.16
Alicante/Alacant	40.56	0.75	0.84	17.87	3.89	1.30	4.42	0.59	0.06	0.03
Almería	10.21	0.53	0.56	10.65	10.60	0.22	1.11	0.22	0.28	0.27
Araba/Álava	7.22	0.59	3.76	21.44	0.87	1.97	23.41	1.00	0.05	-
Asturias	4.15	1.86	10.10	22.37	1.26	1.39	10.35	1.26	0.05	0.02
Ávila	6.61	2.30	4.51	40.78	1.67	0.94	3.24	0.43	0.22	0.16
Badajoz	4.94	16.44	2.74	22.46	0.84	0.53	3.43	0.47	0.18	0.10
Balears, Illes	7.24	0.26	1.49	16.47	0.56	0.21	1.07	0.49	0.07	0.02
Barcelona	6.49	0.87	2.73	18.45	1.54	1.65	5.55	0.45	0.15	0.10
Bizkaia	4.92	0.67	3.40	21.26	0.91	3.02	24.91	1.78	0.06	0.04
Burgos	4.70	1.08	6.23	26.24	1.97	1.83	9.62	1.29	0.05	0.03
Cáceres	3.27	9.54	2.88	32.11	0.93	1.08	5.03	0.52	0.13	0.13
Cádiz	3.60	2.80	1.89	13.79	1.16	0.58	2.12	0.27	0.89	0.29
Cantabria	5.24	1.12	5.02	19.74	1.12	1.76	16.69	1.42	0.17	0.01
Castellón/Castelló	40.12	0.65	0.97	15.48	1.14	1.12	5.54	0.43	0.04	0.03
Ciudad Real	10.83	2.83	2.62	28.37	3.02	0.63	3.80	0.54	0.03	0.08
Córdoba	5.63	2.54	1.08	19.32	1.83	0.36	2.47	0.16	0.19	0.09
Coruña, A	3.84	1.16	30.77	19.01	0.97	0.96	3.12	1.58	0.18	0.11
Cuenca	19.59	0.81	1.89	28.18	2.35	0.79	3.93	0.51	1.19	-
Gipuzkoa	5.84	0.63	3.77	18.11	1.38	3.17	18.60	1.21	0.03	0.03
Girona	3.06	0.41	1.46	4.74	0.23	1.61	1.06	0.13	-	0.03
Granada	8.12	1.32	1.53	14.35	4.36	0.48	2.79	0.64	0.46	0.24
Guadalajara	7.45	1.88	2.05	37.76	1.01	1.55	2.60	0.40	0.02	-
Huelva	3.76	4.09	0.81	7.58	0.96	0.23	1.83	0.03	0.04	0.02
Huesca	7.13	1.12	0.79	14.44	1.32	2.54	5.99	1.32	0.06	0.11
Jaén	6.10	1.40	0.83	17.40	3.28	0.29	2.74	0.05	0.27	0.05
León	2.83	1.00	13.13	22.37	1.01	1.94	7.36	0.94	0.10	0.07
Lleida	2.96	0.29	0.61	4.68	0.95	0.70	2.29	0.15	0.05	-
Lugo	1.73	0.64	48.14	12.02	0.97	0.86	3.91	0.65	0.04	-
Madrid	8.36	2.42	4.98	22.00	2.81	1.57	5.61	0.91	0.60	0.45
Málaga	2.80	1.46	1.61	14.52	1.53	0.60	1.72	0.15	0.72	0.51
Murcia	21.77	0.50	1.88	18.32	20.34	0.37	1.17	0.75	0.05	0.03
Navarra	4.70	0.73	2.63	21.56	1.02	10.32	15.63	2.70	0.04	0.03
Ourense	2.13	1.51	58.70	14.54	0.32	0.32	2.43	0.18	0.11	0.02
Palencia	3.93	2.42	8.08	23.32	0.74	2.55	11.30	0.98	-	-
Palmas, Las	1.46	0.24	2.19	31.69	0.28	0.24	4.27	0.13	0.02	0.02
Pontevedra	3.46	1.93	29.67	17.61	1.67	0.98	3.23	0.28	0.11	0.07
Rioja, La	7.09	0.55	4.20	21.74	0.88	2.87	14.70	2.89	0.06	0.07
Salamanca	3.85	3.70	6.09	25.88	1.02	1.62	8.57	0.95	0.04	-
S. C. Tenerife	1.13	0.34	1.65	40.76	0.25	0.25	5.95	0.24	0.06	0.05
Segovia	6.75	1.43	3.73	42.61	1.81	0.93	5.73	0.47	0.20	-
Sevilla	4.50	2.90	1.86	19.44	1.79	1.05	2.33	0.35	0.38	0.14
Soria	5.90	0.79	1.38	31.20	2.42	1.80	8.83	0.74	0.05	-
Tarragona	8.89	0.14	1.55	6.18	1.08	1.54	4.86	0.75	0.05	0.01
Teruel	29.80	0.39	1.91	12.12	1.09	1.17	3.48	0.65	-	0.03
Toledo	11.50	2.58	3.34	23.31	2.69	0.98	6.52	0.77	0.01	0.11
Valencia/València	30.20	0.77	1.97	22.84	3.51	0.66	2.56	0.42	0.10	0.02
Valladolid	3.99	1.39	7.36	29.19	1.03	1.02	7.01	0.67	0.13	0.04
Zamora	4.42	2.12	12.44	32.23	1.07	0.66	5.99	1.47	0.04	-
Zaragoza	8.09	0.72	2.99	21.24	1.21	2.23	5.84	1.36	0.15	0.04
Ceuta	1.74	2.80	-	19.89	1.33	-	1.43	-	8.33	-
Melilla	3.06	0.60	2.10	8.00	7.50	0.15	0.39	0.39	2.13	4.13

7. Percentage distribution of overnight stays in each province by Autonomous City and Community of origin

Results by provinces

(Continued)

Provinces	Total	Andalucía	Aragón	Asturias, P. de	Balears, Illes	Canarias	Cantabria	Castilla y León	Castilla-La Mancha	Cataluña
TOTAL	100	16.41	2.83	2.65	2.41	3.43	1.52	5.33	3.33	15.67
Albacete	100	8.51	0.68	0.49	0.53	0.53	0.86	2.95	30.56	7.77
Alicante/Alacant	100	3.99	4.18	3.56	0.24	0.24	2.96	8.23	5.29	5.27
Almería	100	57.34	0.81	0.94	0.48	0.30	0.17	2.22	2.16	4.62
Araba/Álava	100	7.56	3.39	2.39	1.00	1.24	2.21	7.68	2.50	14.07
Asturias	100	7.82	1.47	10.62	1.51	3.26	3.15	9.58	3.32	6.28
Ávila	100	11.61	1.60	1.54	1.60	2.81	1.38	10.04	4.61	3.74
Badajoz	100	27.43	1.21	1.81	1.26	1.51	0.86	3.95	4.13	6.54
Balears, Illes	100	13.30	1.61	1.97	30.93	0.85	0.30	1.16	1.26	19.96
Barcelona	100	9.61	2.27	1.44	3.08	2.35	1.07	2.45	1.86	38.09
Bizkaia	100	6.13	2.61	3.31	2.06	2.02	1.92	5.34	2.16	14.23
Burgos	100	6.30	2.94	2.74	0.55	0.46	3.27	19.27	2.63	10.68
Cáceres	100	21.36	1.12	2.02	1.45	0.75	1.06	7.19	3.36	6.11
Cádiz	100	51.31	1.55	1.04	1.08	0.91	1.80	3.03	3.58	4.90
Cantabria	100	8.69	3.00	4.38	1.18	2.24	7.86	9.11	4.72	10.36
Castellón/Castelló	100	2.74	3.40	0.78	0.32	0.31	0.38	3.66	2.76	16.67
Ciudad Real	100	15.74	1.64	0.95	0.52	1.03	0.53	5.33	17.73	5.74
Córdoba	100	45.07	1.90	0.86	0.51	0.96	0.53	3.09	4.09	8.50
Coruña, A	100	6.81	1.45	4.15	1.20	2.73	1.27	5.48	3.41	11.78
Cuenca	100	10.02	4.55	0.79	0.54	0.80	0.74	4.74	7.66	13.28
Gipuzkoa	100	7.38	4.37	3.05	2.29	1.02	1.56	5.43	3.02	21.61
Girona	100	3.59	1.31	0.69	0.81	0.16	0.18	0.95	0.84	72.79
Granada	100	47.79	1.50	2.73	0.76	0.82	0.69	3.95	2.27	7.37
Guadalajara	100	5.24	1.94	1.21	0.42	0.41	0.84	5.07	21.18	10.05
Huelva	100	49.38	1.14	9.41	1.60	2.08	0.43	3.60	1.56	5.81
Huesca	100	2.78	23.74	1.34	0.74	0.92	1.42	3.88	1.52	28.91
Jaén	100	49.61	0.43	2.04	0.65	0.77	0.31	3.36	4.19	6.50
León	100	5.73	1.59	9.24	0.77	0.80	2.26	24.47	2.15	4.55
Lleida	100	2.35	2.23	0.09	0.57	0.32	0.26	1.94	0.46	76.85
Lugo	100	3.73	0.61	7.74	0.36	0.90	1.58	6.45	1.68	4.69
Madrid	100	16.56	2.65	3.06	2.19	4.20	1.96	4.49	3.13	13.41
Málaga	100	56.12	1.48	1.43	2.65	1.53	0.52	2.34	1.73	4.76
Murcia	100	11.77	3.59	0.92	1.79	1.06	0.59	2.44	3.44	11.44
Navarra	100	4.27	6.75	2.36	0.60	1.05	1.27	5.47	1.51	17.43
Ourense	100	1.95	0.47	3.49	0.30	0.51	0.53	7.14	3.63	3.46
Palencia	100	3.52	2.14	4.53	0.30	0.65	3.70	22.04	2.42	6.88
Palmas, Las	100	9.23	0.64	2.14	0.41	26.06	1.26	1.55	0.47	11.17
Pontevedra	100	9.51	0.98	4.13	1.31	1.37	1.86	11.38	6.11	6.73
Rioja, La	100	6.81	3.56	3.59	0.85	1.19	2.72	6.93	4.11	16.48
Salamanca	100	10.22	2.15	3.08	0.76	1.33	2.27	22.39	4.29	5.84
S. C. Tenerife	100	7.53	0.65	2.38	0.56	21.14	1.43	2.98	1.22	4.99
Segovia	100	9.33	1.93	2.62	0.70	1.01	1.89	11.79	6.04	5.23
Sevilla	100	39.78	1.63	1.01	1.59	2.55	1.03	3.22	2.06	10.86
Soria	100	4.67	8.28	0.55	0.43	0.22	1.45	16.01	4.50	12.51
Tarragona	100	4.30	5.33	1.31	1.82	1.08	1.21	1.76	1.25	51.78
Teruel	100	4.84	15.75	0.72	0.84	0.32	0.84	1.89	3.45	23.80
Toledo	100	14.67	3.44	2.02	0.84	1.23	0.83	5.66	12.66	7.32
Valencia/València	100	8.03	2.28	1.23	1.82	2.08	0.99	3.60	4.74	13.31
Valladolid	100	8.93	2.08	3.53	0.54	1.13	2.37	19.01	3.16	8.22
Zamora	100	7.56	1.86	4.27	0.40	0.96	2.08	19.21	1.95	2.96
Zaragoza	100	8.30	15.18	1.94	0.73	1.06	1.35	5.34	2.97	21.30
Ceuta	100	58.20	0.09	0.45	2.24	0.27	2.42	0.94	1.57	0.94
Melilla	100	65.72	1.18	0.47	-	0.69	0.12	0.88	1.20	4.31

7. Percentage distribution of overnight stays in each province by Autonomous City and Community of origin

Results by provinces

(Conclusion)

Provinces	Comunitat Valenciana	Extremadura	Galicia	Madrid, C. de	Murcia, Región de	Navarra, C. Foral de	País Vasco	Rioja, La	Ceuta	Melilla
TOTAL	8.97	1.67	5.05	20.15	2.05	1.51	5.98	0.74	0.19	0.12
Albacete	16.60	1.05	1.76	18.43	7.08	0.62	1.03	0.44	0.03	0.07
Alicante/Alacant	26.84	0.85	1.42	18.80	2.19	3.61	10.84	1.43	0.04	0.03
Almería	9.10	0.43	0.61	10.62	8.12	0.26	1.27	0.22	0.17	0.16
Araba/Álava	5.74	2.52	3.70	21.43	0.97	1.41	21.48	0.66	0.04	-
Asturias	6.03	1.88	8.87	22.35	1.90	1.21	9.83	0.84	0.07	0.01
Ávila	6.44	2.20	4.59	40.64	1.60	0.75	4.08	0.36	0.26	0.16
Badajoz	6.41	15.39	2.01	22.16	0.89	0.53	3.26	0.46	0.11	0.09
Balears, Illes	7.15	0.21	2.52	15.36	0.53	0.24	1.85	0.71	0.08	0.01
Barcelona	5.96	1.45	2.78	18.29	1.61	1.54	5.45	0.45	0.13	0.11
Bizkaia	5.94	0.71	3.86	19.89	1.38	2.56	24.15	1.63	0.10	0.02
Burgos	5.17	0.85	5.82	24.62	3.45	1.86	8.22	1.07	0.04	0.02
Cáceres	4.50	11.12	2.28	29.92	1.27	0.92	4.98	0.44	0.07	0.08
Cádiz	4.44	2.92	1.88	15.40	1.15	0.69	3.33	0.23	0.62	0.15
Cantabria	6.18	1.17	4.46	21.32	1.20	1.68	10.85	1.39	0.22	0.00
Castellón/Castelló	41.44	0.78	0.74	15.87	0.82	1.80	7.02	0.45	0.02	0.02
Ciudad Real	8.99	3.97	3.07	27.02	2.78	0.58	3.96	0.36	0.02	0.04
Córdoba	6.26	2.31	1.13	19.49	1.69	0.37	2.68	0.15	0.34	0.07
Coruña, A	4.12	1.47	32.55	16.78	1.07	0.71	3.32	1.45	0.16	0.10
Cuenca	18.34	1.01	2.12	26.11	2.47	0.74	4.27	1.07	0.75	-
Guipúzcoa	5.68	0.79	3.56	18.13	1.42	2.62	16.99	0.96	0.03	0.09
Girona	4.19	0.85	3.23	4.39	0.36	3.17	2.06	0.43	-	0.01
Granada	8.12	1.24	1.72	12.69	3.71	0.43	3.18	0.50	0.30	0.23
Guadalajara	7.78	3.66	2.30	34.06	1.18	1.33	2.84	0.48	0.01	-
Huelva	3.81	5.54	0.87	10.10	0.79	0.48	3.26	0.06	0.05	0.01
Huesca	8.07	0.69	1.00	14.18	1.44	1.92	6.20	1.07	0.10	0.07
Jaén	6.51	1.46	0.62	17.94	2.85	0.25	2.16	0.09	0.24	0.03
León	2.78	1.36	12.25	20.74	1.01	2.32	7.00	0.80	0.11	0.05
Lleida	3.78	0.30	0.65	5.45	1.88	0.60	2.09	0.12	0.03	-
Lugo	1.40	0.60	50.56	12.98	0.75	1.13	4.33	0.47	0.04	-
Madrid	8.00	2.47	5.47	20.70	2.82	1.52	5.49	0.89	0.54	0.47
Málaga	2.51	1.27	1.97	15.03	1.87	0.95	2.62	0.16	0.55	0.50
Murcia	18.32	0.60	2.71	23.70	15.00	0.57	1.41	0.62	0.05	0.01
Navarra	4.70	0.61	2.98	19.71	1.10	11.66	14.00	4.47	0.03	0.03
Ourense	2.16	1.37	51.70	20.44	0.34	0.26	2.02	0.15	0.06	0.02
Palencia	7.53	2.35	9.05	21.88	0.70	1.68	9.92	0.72	-	-
Palmas, Las	1.35	0.22	3.37	35.64	0.27	0.36	5.63	0.16	0.01	0.08
Pontevedra	4.12	1.13	25.36	18.50	1.75	1.22	4.20	0.21	0.10	0.05
Rioja, La	8.30	1.63	3.78	19.55	1.27	2.57	13.58	2.89	0.13	0.05
Salamanca	4.24	3.88	6.10	24.10	0.83	1.38	6.49	0.59	0.05	-
S. C. Tenerife	1.16	0.43	2.68	43.19	0.24	0.36	8.81	0.18	0.05	0.02
Segovia	7.60	1.50	3.36	37.24	2.22	0.94	5.86	0.55	0.21	-
Sevilla	4.52	2.57	2.47	20.31	1.72	1.38	2.55	0.31	0.33	0.10
Soria	6.80	0.92	1.81	27.27	2.98	1.45	9.50	0.59	0.05	-
Tarragona	7.32	0.28	2.64	7.92	1.13	1.77	7.65	1.41	0.03	0.00
Teruel	28.19	0.32	1.63	11.98	1.25	0.96	2.68	0.53	-	0.02
Toledo	13.47	2.51	3.87	20.18	2.24	1.42	6.94	0.57	0.07	0.07
Valencia/València	26.11	1.26	2.47	24.10	3.41	0.75	3.24	0.44	0.09	0.05
Valladolid	4.41	1.30	7.06	29.11	1.04	0.93	6.51	0.52	0.13	0.03
Zamora	3.92	2.08	13.61	29.95	1.08	0.65	6.25	1.17	0.03	-
Zaragoza	7.23	0.82	2.86	21.51	1.45	1.88	4.57	1.26	0.17	0.06
Ceuta	1.27	5.78	-	17.73	0.94	-	0.67	-	6.52	-
Melilla	2.40	0.28	2.45	9.80	4.90	0.40	0.53	0.31	1.78	2.59

8. Travellers, overnight stays and average stay by country of residence

Results by countries

Countries	Number of travellers		Overnight stays	
	Total	%	Total	%
TOTAL	7,676,616	100.00	24,764,874	100.00
Residents in Spain	3,895,484	50.74	8,467,324	34.19
Residents abroad	3,781,132	49.26	16,297,550	65.81
Total Residents abroad	3,781,132	100.00	16,297,550	100.00
Total Residents in U.E. (without Spain)	2,782,967	73.60	13,602,534	83.46
- Germany	754,142	19.94	4,958,684	30.43
- Austria	34,862	0.92	144,227	0.88
- Belgium	83,932	2.22	402,259	2.47
- Denmark	44,737	1.18	232,395	1.43
- Finland	33,328	0.88	130,369	0.80
- France	403,222	10.66	1,124,226	6.90
- Greece	8,370	0.22	25,090	0.15
- Ireland	55,325	1.46	238,015	1.46
- Italy	209,434	5.54	564,200	3.46
- Luxembourg	5,351	0.14	30,934	0.19
- Netherlands	148,101	3.92	711,701	4.37
- Poland	37,143	0.98	162,940	1.00
- Portugal	91,605	2.42	195,354	1.20
- United Kingdom	726,827	19.22	4,119,925	25.28
- Czech Republic	16,425	0.43	61,854	0.38
- Sweden	73,868	1.95	312,840	1.92
- Rest of UE*	56,292	1.49	187,522	1.15
Norway	44,893	1.19	209,421	1.28
Russia	56,997	1.51	263,360	1.62
Switzerland	88,838	2.35	428,477	2.63
Rest of Europe	81,239	2.15	226,457	1.39
Japan	60,979	1.61	100,571	0.62
United States of America	192,954	5.10	413,075	2.53
Rest of America	244,669	6.47	567,204	3.48
African's countries	35,234	0.93	73,137	0.45
Rest of the world	192,363	5.09	413,314	2.54

*Countries included in the Rest of UE: Bulgaria, Cyprus, Slovakia, Slovenia, Estonia, Hungary, Latvia, Lithuania, Malta and Romania

Hotel Price Index (HPI). 2008 Base

October 2011

Provisional data

General Autonomous Cities and Communities and national indices

	Index	Interannual variation rate
TOTAL	91.2	-0.1
Andalucía	91.7	-1.8
Aragón	82.7	-3.8
Asturias, Principado de	92.0	-3.4
Balears, Illes	90.5	0.8
Canarias	94.7	2.8
Cantabria	93.8	-1.9
Castilla y León	91.9	-2.7
Castilla - La Mancha	91.3	-4.3
Cataluña	93.1	0.8
Comunitat Valenciana	90.1	-0.1
Extremadura	92.4	-2.1
Galicia	95.4	-4.7
Madrid, Comunidad de	84.5	-0.6
Murcia, Región de	83.0	-2.0
Navarra, Comunidad Foral de	92.9	1.2
País Vasco	93.1	-2.8
Rioja, La	94.1	-0.3
Ceuta	95.6	3.2
Melilla	100.1	-3.3

National General Index and breakdown by categories

	Index	Interannual variation rate
TOTAL	91.2	-0.1
HOTELS: Gold stars		
Five	84.9	-0.4
Fourth	90.7	0.1
Three	92.6	-0.1
Two	96.7	-0.2
One	99.3	1.9
HOSTALS: Silver stars		
Three and two	93.5	-3.0
One	96.3	-0.2

Indicators on the Profitability of the Hotel Sector

October 2011

Provisional data

ADR and RevPAR for Autonomous Cities and Communities and national indices

	ADR (in euros)	Variation Rate variation	RevPar (in euros)	Variation Rate variation
TOTAL	67.0	1.4	37.8	3.6
Andalucía	66.9	-0.9	35.7	1.8
Aragón	57.9	0.7	20.7	-8.6
Asturias, Principado de	56.1	-5.6	20.3	-8.1
Balears, Illes	55.1	3.2	30.7	9.7
Canarias	71.5	3.9	53.9	11.9
Cantabria	59.0	-4.1	22.5	-12.4
Castilla y León	56.7	-1.9	23.8	-4.1
Castilla - La Mancha	57.9	-4.3	20.1	-8.9
Cataluña	77.7	4.3	46.5	4.7
Comunitat Valenciana	57.3	-0.5	33.3	3.2
Extremadura	57.6	-1.4	22.6	1.9
Galicia	55.4	-1.9	19.9	-18.2
Madrid, Comunidad de	84.1	0.9	60.1	2.8
Murcia, Región de	57.6	0.3	25.0	-4.9
Navarra, Comunidad Foral de	64.4	-0.1	29.0	0.5
País Vasco	69.8	-10.4	41.5	-5.6
Rioja, La	64.2	3.5	35.4	2.2
Ceuta	68.5	-2.0	36.0	-7.6
Melilla	62.6	-1.4	37.9	7.5

National ADR and RevPar and breakdown by categories

	ADR (in euros)	Variation Rate interannual	RevPar (in euros)	Variation Rate interannual
TOTAL	67.0	1.4	37.8	3.6
HOTELS: Gold stars				
Five	146.4	2.2	90.8	6.4
Four	73.7	0.5	49.5	3.4
Three	52.6	0.8	30.7	3.0
Two	49.8	2.8	21.3	-2.1
One	47.4	0.2	17.0	-1.7
GUESTHOUSES: Silver stars				
Three and two	43.9	-2.0	14.6	-0.1
One	36.4	0.7	11.4	4.4

Due to the updating in the establishments directory carried out in Navarra in January 2011 and in Extremadura in March 2011, the data to be published for Navarra, Extremadura and the national total from those dates are not directly comparable with the data published last year, therefore data link coefficients have been calculated to allow the comparison of data between different years. These coefficients are available in INE website (www.ine.es)