

Hotel Tourism Short-Term Trends (HOS/HPI/ADR/REVPAR)
November 2011. *Provisional data*

Overnight stays in hotel establishments increase 1.7%* in November, as compared with the same month in 2010

Hotels earn 33.9 euros per available room and invoice an average of 69.0 euros per occupied room

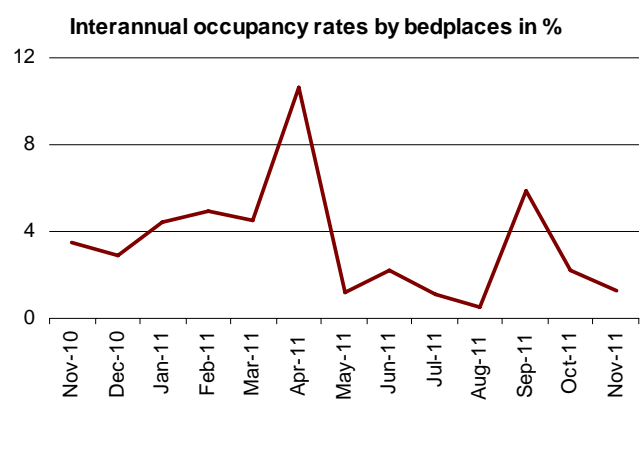
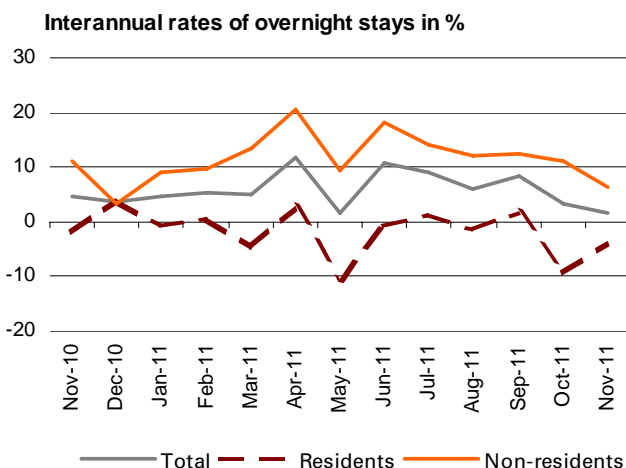
During the month of November, 14.6 million overnight stays were recorded in hotel establishments, indicating a 1.7% increase, as compared with the same month in 2010. Overnight stays by residents decreased 3.8%, while non-resident stays increased 6.2%.

The average stay increased 2.5%, as compared with November 2010, standing at 3.0 nights per guest.

During the first eleven months of the year, overnight stays increased 6.6%, as compared with the same period the previous year.

In turn, **the Hotel Price Index (HPI) registered a 0.3% decrease**, this rate being 0.1 points lower than that registered in November 2010. Regarding the indicators on the profitability of the hotel sector, invoicing per occupied room reached an average value of 69.0 euros (0.3 euros more than one year ago), and income per available room stood at 33.9 euros (0.3 euros more).

42.5% of the available bed places were filled in November, with an interannual increase of 1.3%. The weekend occupancy rate by bed places stood at 47.8%.



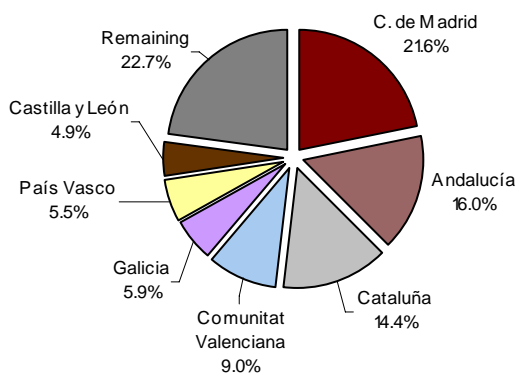
* Due to the update made in the in the directory of hotel establishments in Comunidad Foral de Navarra and Extremadura, the data published for those Communities and the national total cannot be directly compared. To bridge this gap in the series, some linking coefficients have been calculated to allow users to compare data from different years. The coefficients are published monthly on the INE website in the section dedicated to this statistical operation, in a specific section entitled linking coefficients.

Overnight stays of guests resident abroad

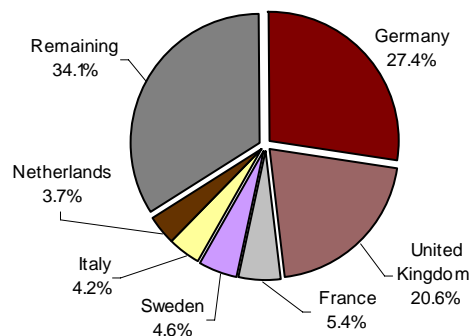
Guests from Germany and the United Kingdom made more than four million overnight stays in November. The German market experienced an interannual increase of 8.2%, while the British market grew 2.2%.

Overnight stays of guests from France, Sweden and Italy (the following countries of origin) presented interannual rates of 1.3%, 15.1% and 0.8% respectively.

Overnight stays of guests resident in Spain by Autonomous Community of origin in %



Overnight stays of guests resident abroad by country of origin in %

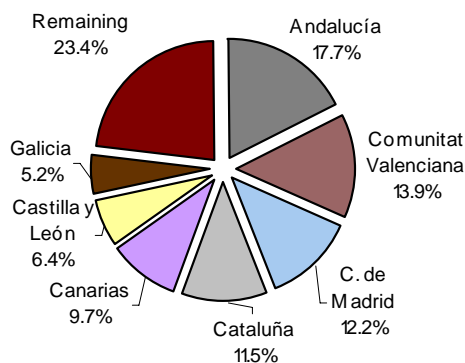


Main destinations

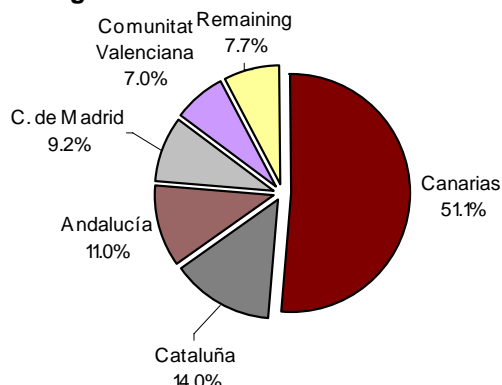
The main destination chosen by non-residents was Canarias. In this Autonomous Community, overnight stays by foreign nationals grew 11.8%. It was followed by Cataluña, with an interannual rate of 1.3%, and Andalucía, with an increase of 2.6%.

Andalucía, Comunitat Valenciana and Comunidad de Madrid were the main destinations of guests resident in Spain, with interannual rates for overnight stays of -6.8%, -1.0% and 1.7%, respectively.

Distribution of overnight stays of guests resident in Spain in %



Distribution of overnight stays of guests resident abroad in %



Results by Autonomous Community, tourist area and tourist site

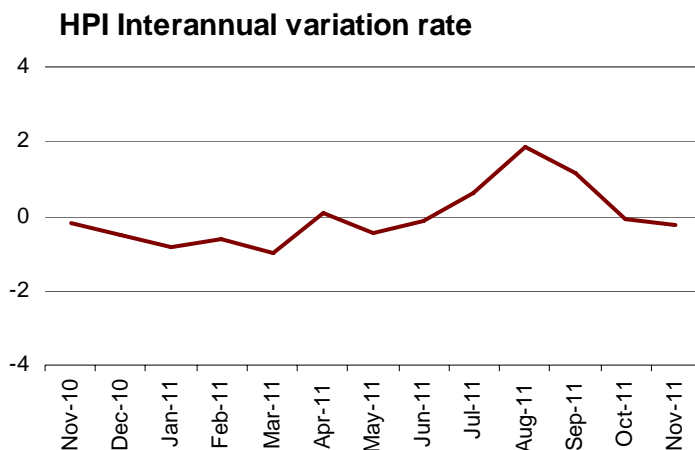
Canarias was the Autonomous Community with the highest occupancy rate by bed places during the month of November (72.2%). It was followed by Comunidad de Madrid (48.4%) and Illes Balears (47.1%).

The tourist areas with the highest occupancy and overnight stay rates were located on the islands and the coasts. Gran Canaria recorded the highest occupancy rate by bedplaces and the highest weekend occupancy rate by bed places (both with 77.9%). Tenerife registered more than 1.8 million overnight stays in November.

The tourist sites with the highest number of overnight stays were Madrid, Barcelona and San Bartolomé de Tirajana. Mogán reached the highest occupancy rate by bedplaces (81.2%), while Arona reached the highest weekend occupancy (82.0%).

Evolution of the Hotel Price Index

The interannual rate of the HPI stood at -0.3% in November, this rate being 0.2 points lower than that obtained last month, and 0.1 points lower than that registered one year ago.



HPI by Autonomous Community

The four Autonomous Communities (Cataluña, Canarias, Comunidad de Madrid and Andalucía) that carried 72.2% of the total weight of the HPI in the month of November, showed uneven behaviour as compared with October 2011.

Canarias, which carried the greatest load in the weighting structure this month, presented an interannual rate of 4.1%, that is 1.3 points higher than that estimated in October. Hotel prices recorded a variation of -0.3% in Cataluña, as compared with the 0.8% recorded the previous month. Comunidad de Madrid showed an interannual rate of -2.0% , as compared with the -0.6% observed last month. In Andalucía, the variation was -2.1% , indicating 0.3 points less than in October.

HPI by category

Hotel prices increased in November only in four-gold-star (1.1%).

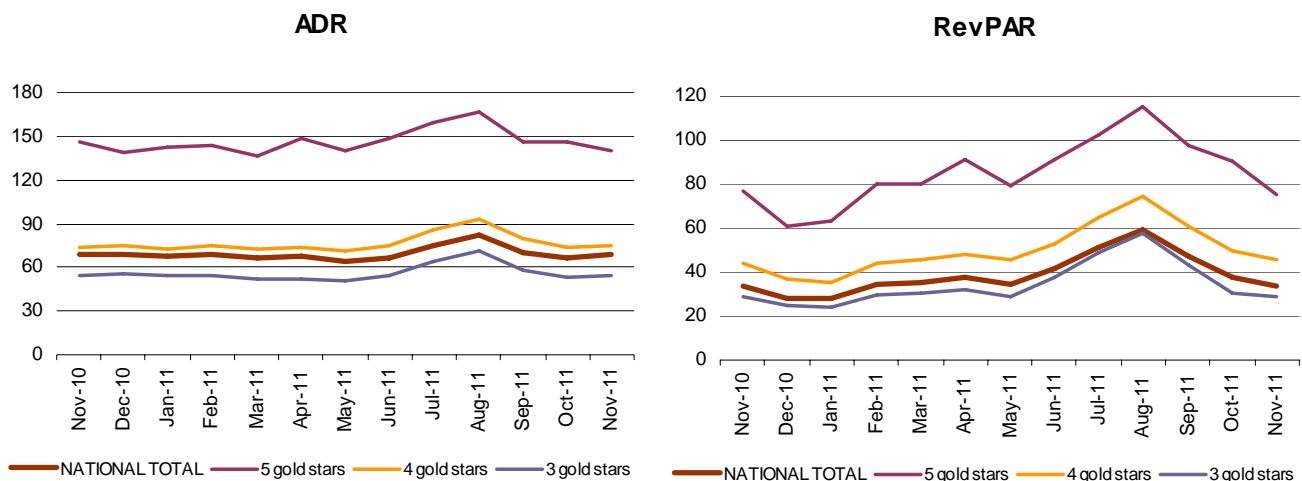
Conversely, the HPI decreased in three and two-silver-star hotels (-2.1%), in two-gold-star hotels (-2.0%), three-gold-star hotels (-2.0%), five-gold-star hotels (-1.4%), one-gold-star hotels (-0.7%) and one-silver-star hotels (-0.4%).

Indicators on the Profitability of the Hotel Sector

The average invoicing by hotels per occupied room (ADR) in November was 69.0 euros, indicating an increase of 0.3 euros as compared with the same month in 2010.

In turn, income per available room (RevPAR), conditioned by the occupancy registered in the hotel establishments, reached 33.9 euros, with an increase of 0.3 euros.

By category, the average invoicing was 140.7 euros for five-star hotels, 74.9 euros for four-star hotels and 54.2 euros for three-star hotels. Income per available room for these same categories was 75.2, 45.2 and 28.8 euros, respectively.



For further information see INEbase-www.ine.es/en/welcome_en.htm All press releases at: www.ine.es/en/prensa/prensa_en.htm

Press Office: Telephone numbers: 91 583 93 63 / 94 08 – Fax: 91 583 90 87 - gprensa@ine.es

Information Area: Telephone number: 91 583 91 00 – Fax: 91 583 91 58 – www.ine.es/infoine/?L=1

Tourist Accommodation Occupancy Survey (Hotels and similar establishments)

November 2011

Provisional data

1. Travellers, overnight stays and average stay by categories of establishment

Category	Number of travellers			Number of overnight stays			Average stay
	Total	Residents in Spain	Residents abroad	Total	Residents in Spain	Residents abroad	
TOTAL	4,909,224	2,873,387	2,035,837	14,623,835	6,247,847	8,375,989	2.98
HOTELS: Golden stars							
Five	334,403	129,595	204,808	1,034,944	241,323	793,621	3.09
Four	2,350,789	1,270,190	1,080,599	7,429,656	2,595,174	4,834,483	3.16
Three	1,288,933	797,807	491,125	4,013,221	1,944,762	2,068,459	3.11
Two	355,599	254,597	101,002	828,980	551,189	277,790	2.33
One	133,823	97,736	36,088	297,745	186,056	111,689	2.22
INNS: Silver stars							
Two and three	244,684	182,349	62,335	503,915	365,793	138,122	2.06
One	200,993	141,112	59,881	515,374	363,549	151,825	2.56
Interannual rate	-1.50	-4.16	2.51	1.72	-3.78	6.24	2.46
Cumulative interannual rate	4.10	-1.25	10.91	6.60	-2.05	12.87	2.39

2. Open establishments, capacity, occupancy and employed personnel by categories of establishment

Category	Estimated open establishments	Estimated bedplaces	Level of occupancy			Employed personnel
			Per bedplaces	Per bedplaces at weekend	Per rooms	
TOTAL	13,570	1,142,082	42.46	47.84	49.18	153,957
HOTELS: Golden stars						
Five	236	75,615	45.29	49.91	53.84	21,649
Four	1,714	478,850	51.40	56.92	60.31	72,357
Three	2,064	288,325	46.20	52.62	53.35	34,913
Two	1,686	94,860	29.05	34.53	34.66	8,579
One	1,040	43,258	22.86	27.33	27.51	3,730
INNS: Silver stars						
Two and three	2,890	82,467	20.31	24.54	24.74	6,925
One	3,940	78,707	21.80	24.83	27.05	5,804
Interannual rate	-0.33	0.44	1.29	-0.04	0.20	-0.46

3. Travellers, overnight stays, occupancy, average stay and employed personnel

Results by areas and tourist sites

	Travellers		Overnight stays		Level of occupancy			Average stay	Employed personnel
	Residents in Spain	Residents abroad	Residents in Spain	Residents abroad	Per bedplac	Per bedplaces	Per rooms at weekend		
Tourist areas with a greater level of occupancy per month									
Isla de Gran Canaria	35,807	144,150	131,753	1,206,337	77.93	77.85	86.43	7.44	9,939
Isla de Tenerife	62,249	196,506	296,901	1,601,092	74.04	77.00	83.62	7.34	15,413
Isla de Fuerteventura	8,468	91,811	34,210	851,232	68.14	66.57	80.71	8.83	6,421
Isla de Lanzarote	24,606	67,697	124,512	550,343	67.00	65.60	74.38	7.31	5,111
Isla de La Gomera	1,720	5,291	3,129	31,491	66.19	66.88	70.06	4.94	410
Barcelona	144,690	364,443	269,930	882,228	54.80	61.68	66.01	2.26	11,671
Costa Blanca	119,445	81,864	509,791	435,866	52.72	59.74	57.68	4.70	7,496
Isla de Mallorca	33,826	46,378	128,812	272,382	48.42	46.18	49.87	5.00	4,326

Tourist areas with a greater number of overnight stays per month *

Costa del Sol	84,679	107,466	208,648	483,673	41.79	46.43	48.69	3.60	7,337
Costa Brava	57,869	59,058	112,112	142,464	31.54	36.94	32.83	2.18	2,795
Costa de la Luz de Cádiz	39,074	20,286	91,278	66,394	24.84	30.10	32.86	2.66	2,364
Costa de Almería	35,914	5,963	123,518	28,867	25.14	27.62	34.80	3.64	1,349
Costa Daurada	43,417	11,324	91,224	34,785	25.68	33.80	31.81	2.30	1,448
Costa del Garraf	30,936	31,045	61,409	61,680	31.56	34.83	46.61	1.99	1,527
Catalunya Central	46,190	16,304	85,057	36,563	30.41	31.74	39.23	1.95	1,687
Costa de la Luz de Huelva	26,193	6,426	79,480	31,995	27.35	33.12	30.95	3.42	1,112

Tourist sites with a greater level of occupancy per month

Mogán	1,164	33,291	7,992	296,696	81.21	78.27	87.56	8.84	1,677
San Bartolomé De Tirajana	12,230	96,543	63,084	854,389	78.85	78.57	86.71	8.43	7,424
Arona	5,638	47,802	36,568	398,163	77.86	81.95	89.14	8.13	3,156
Adeje	10,985	87,843	64,432	745,289	77.85	77.94	86.49	8.19	6,549
Puerto De La Cruz	19,291	25,618	114,523	224,384	74.44	79.21	81.70	7.55	2,554
Pájara	2,615	56,326	15,928	578,533	72.65	70.09	84.62	10.09	4,346
Tías	3,768	19,912	21,492	181,180	70.87	68.85	82.17	8.56	1,441
Yaiza	12,789	35,527	66,704	272,323	70.83	71.11	78.10	7.02	2,566
Benidorm	62,632	52,703	381,702	344,540	68.08	73.19	69.35	6.30	4,763
Palmas De Gran Canaria (Las)	18,915	12,622	52,613	51,202	67.46	71.88	85.30	3.29	724

Tourist sites with a greater number of overnight stays per month *

Madrid	351,034	317,872	582,701	702,882	53.22	63.40	66.94	1.92	12,296
Barcelona	136,305	353,987	247,335	858,157	54.92	62.21	65.85	2.25	11,351
Sevilla	80,283	58,857	134,190	124,930	47.43	56.90	53.12	1.86	2,664
Palma	21,168	32,253	43,668	181,015	49.16	51.50	55.36	4.21	2,456
Valencia	65,630	44,430	109,864	106,481	41.94	56.06	50.51	1.97	2,101
Torremolinos	18,295	26,540	42,388	158,143	51.60	51.82	54.40	4.47	1,493
Granada	58,248	38,450	105,918	66,851	43.94	65.13	48.13	1.79	1,592
Teguise	4,506	10,883	25,822	97,165	57.95	54.57	61.74	7.99	1,010
Málaga	30,049	30,282	53,700	56,158	40.29	46.22	52.18	1.82	1,195
Lloret De Mar	12,300	17,018	34,416	71,043	51.62	49.97	49.44	3.60	567

* Not taken into account those included in the preceding table because they are in the bigger level of occupancy tables too.

4. Travellers, overnight stays and average stay

Results by Autonomous Cities and Communities and provinces

	Number of travellers			Overnight stays			Average stay
	Total	Residents in Spain	Residents abroad	Total	Residents in Spain	Residents abroad	
TOTAL	4,909,224	2,873,387	2,035,837	14,623,835	6,247,847	8,375,989	2.98
Andalucía	818,776	518,907	299,869	2,024,719	1,105,804	918,915	2.47
Almería	44,907	38,320	6,587	162,409	132,203	30,205	3.62
Cádiz	87,205	59,779	27,426	210,060	124,519	85,541	2.41
Córdoba	71,801	52,198	19,604	117,631	86,055	31,576	1.64
Granada	137,242	91,142	46,100	286,324	197,354	88,970	2.09
Huelva	47,600	39,803	7,797	136,915	101,718	35,198	2.88
Jaén	35,137	31,286	3,851	58,900	53,187	5,713	1.68
Málaga	217,905	102,708	115,197	725,706	232,520	493,186	3.33
Sevilla	176,979	103,672	73,307	326,775	178,249	148,526	1.85
Aragón	118,818	101,366	17,452	219,082	189,878	29,203	1.84
Huesca	20,142	17,767	2,375	39,856	35,901	3,955	1.98
Teruel	19,630	17,973	1,657	33,917	31,338	2,579	1.73
Zaragoza	79,046	65,626	13,420	145,309	122,640	22,670	1.84
Asturias, Principado de	70,755	64,361	6,395	136,542	124,070	12,472	1.93
Balears, Illes	95,128	46,640	48,488	476,534	197,618	278,915	5.01
Canarias	648,841	137,324	511,518	4,887,214	603,286	4,283,929	7.53
Palmas, Las	372,539	68,881	303,658	2,898,387	290,475	2,607,912	7.78
Santa Cruz de Tenerife	276,302	68,442	207,860	1,988,828	312,811	1,676,017	7.20
Cantabria	49,441	42,898	6,543	102,887	90,377	12,510	2.08
Castilla y León	264,884	230,696	34,189	464,436	401,717	62,719	1.75
Ávila	14,927	13,363	1,564	24,094	21,603	2,490	1.61
Burgos	41,725	34,685	7,040	71,580	61,154	10,426	1.72
León	42,002	38,368	3,634	72,642	64,341	8,301	1.73
Palencia	12,037	10,732	1,305	22,752	20,666	2,085	1.89
Salamanca	55,200	45,744	9,456	106,323	91,101	15,222	1.93
Segovia	24,432	21,951	2,481	38,344	33,842	4,502	1.57
Soria	13,140	12,326	814	25,003	23,388	1,615	1.90
Valladolid	48,004	41,269	6,735	83,353	67,440	15,913	1.74
Zamora	13,416	12,258	1,158	20,345	18,180	2,164	1.52
Castilla-La Mancha	138,711	119,355	19,356	245,554	211,835	33,719	1.77
Albacete	23,595	22,048	1,547	53,570	50,880	2,690	2.27
Ciudad Real	27,551	24,653	2,899	51,604	46,008	5,596	1.87
Cuenca	22,072	19,420	2,652	34,568	30,671	3,897	1.57
Guadalajara	17,249	15,956	1,293	28,208	25,730	2,478	1.64
Toledo	48,243	37,277	10,966	77,605	58,546	19,058	1.61
Cataluña	873,997	383,278	490,719	1,892,187	715,699	1,176,488	2.16
Barcelona	643,413	228,766	414,647	1,417,438	428,595	988,843	2.20
Girona	129,316	69,382	59,934	273,062	128,843	144,219	2.11
Lleida	37,646	34,111	3,535	61,039	54,575	6,464	1.62
Tarragona	63,621	51,019	12,602	140,648	103,686	36,962	2.21
Comunitat Valenciana	421,374	277,671	143,703	1,452,658	866,237	586,421	3.45
Alicante/Alacant	213,015	128,785	84,230	966,542	525,657	440,885	4.54
Castellón/Castelló	42,701	35,652	7,048	123,221	105,199	18,022	2.89
Valencia/València	165,659	113,234	52,424	362,896	235,381	127,515	2.19
Extremadura	87,496	76,204	11,292	160,703	143,363	17,340	1.84
Badajoz	45,253	38,429	6,824	79,182	69,467	9,714	1.75
Cáceres	42,243	37,775	4,468	81,521	73,896	7,626	1.93
Galicia	174,834	149,753	25,082	377,759	323,972	53,788	2.16
Coruña, A	80,054	65,880	14,173	165,630	138,023	27,607	2.07
Lugo	22,051	20,668	1,383	45,056	41,189	3,866	2.04
Ourense	21,558	20,111	1,447	40,700	37,388	3,311	1.89
Pontevedra	51,172	43,093	8,079	126,374	107,372	19,002	2.47
Madrid, Comunidad de	812,611	461,205	351,406	1,530,874	762,294	768,580	1.88
Murcia, Región de	74,247	62,754	11,493	169,495	140,872	28,623	2.28
Navarra, Comunidad Foral de	49,329	41,035	8,294	94,613	77,823	16,790	1.92
País Vasco	163,381	119,948	43,433	300,095	215,682	84,413	1.84
Araba/Álava	26,502	21,832	4,670	46,201	37,585	8,616	1.74
Bizkaia	78,147	56,015	22,132	143,704	99,645	44,059	1.84
Gipuzkoa	58,731	42,101	16,630	110,190	78,452	31,738	1.88
Rioja, La	35,626	32,190	3,436	63,259	56,925	6,334	1.78
Ceuta	6,735	4,551	2,184	14,332	11,217	3,115	2.13
Melilla	4,240	3,251	988	10,891	9,178	1,714	2.57

5. Establishment, capacity, occupancy and employed personnel

Results by Autonomous Cities and Communities and provinces

	Estimated open establishments	Estimated bedplaces	Level of occupancy			Employed personnel
			Per bedplaces	Per bedplaces at weekends	Per rooms	
TOTAL	13,570	1,142,082	42.46	47.84	49.18	153,957
Andalucía	2,218	203,204	33.11	40.36	39.56	23,830
Almería	160	21,962	24.64	27.81	33.86	1,631
Cádiz	329	28,575	24.46	29.97	31.25	3,380
Córdoba	208	11,332	34.44	49.71	42.16	1,455
Granada	404	27,078	35.09	51.04	40.40	2,908
Huelva	130	16,697	27.24	33.49	32.23	1,396
Jaén	186	9,175	21.35	28.00	25.65	1,125
Málaga	475	61,801	39.05	44.31	45.16	8,520
Sevilla	326	26,585	40.78	46.42	45.77	3,415
Aragón	748	34,634	21.05	26.95	25.61	3,773
Huesca	245	9,743	13.62	17.87	16.16	890
Teruel	212	6,906	16.34	25.52	19.27	811
Zaragoza	291	17,985	26.89	32.43	32.67	2,072
Asturias, Principado de	496	21,280	21.36	28.50	29.75	2,252
Balears, Illes	159	33,617	47.12	45.83	48.84	4,957
Canarias	523	223,674	72.16	72.77	81.68	37,858
Palmas, Las	266	132,992	72.04	71.15	81.68	21,471
Santa Cruz de Tenerife	257	90,682	72.35	75.15	81.66	16,386
Cantabria	291	13,678	24.98	29.70	28.54	1,870
Castilla y León	1,385	60,122	25.69	31.88	30.57	7,517
Ávila	92	4,726	16.94	32.25	21.13	550
Burgos	211	8,973	26.55	29.16	31.69	988
León	280	10,792	22.40	27.55	27.67	1,170
Palencia	96	3,359	22.55	20.36	28.58	359
Salamanca	217	11,037	31.98	41.13	34.63	1,456
Segovia	143	5,807	21.92	32.92	24.98	755
Soria	116	3,834	21.69	27.84	25.68	483
Valladolid	143	8,223	33.75	36.40	42.85	1,247
Zamora	87	3,371	20.08	25.48	24.02	509
Castilla-La Mancha	854	35,124	23.25	29.97	27.92	3,760
Albacete	173	7,214	24.74	27.34	28.48	814
Ciudad Real	194	7,830	21.94	24.17	28.14	870
Cuenca	164	5,784	19.89	31.15	22.96	597
Guadalajara	137	4,798	19.56	24.38	25.28	391
Toledo	186	9,499	27.11	38.86	31.62	1,088
Cataluña	1,758	159,865	39.34	45.65	47.94	21,280
Barcelona	905	99,304	47.44	53.10	58.51	15,242
Girona	395	30,218	30.00	36.89	31.51	3,210
Lleida	243	10,938	18.58	27.95	22.40	1,065
Tarragona	216	19,405	24.08	31.19	29.99	1,762
Comunitat Valenciana	931	110,263	43.75	51.23	48.96	13,003
Alicante/Alacant	419	63,801	50.30	56.95	54.63	7,900
Castellón/Castelló	157	12,058	33.98	44.29	40.95	1,335
Valencia/València	355	34,403	35.02	43.04	41.25	3,768
Extremadura	451	20,260	26.38	33.27	30.72	2,653
Badajoz	213	9,967	26.44	28.42	32.42	1,257
Cáceres	238	10,293	26.32	37.97	29.07	1,396
Galicia	1,434	58,605	21.43	24.29	26.54	6,988
Coruña, A	592	24,378	22.59	25.30	27.89	2,579
Lugo	278	8,811	17.02	18.94	22.62	1,037
Ourense	195	6,372	21.18	25.34	26.05	819
Pontevedra	369	19,044	22.09	25.11	26.79	2,553
Madrid, Comunidad de	1,187	105,118	48.40	57.09	61.07	15,166
Murcia, Región de	178	16,739	33.55	40.40	40.88	2,246
Navarra, Comunidad Foral de	302	11,993	26.20	28.55	32.94	1,473
País Vasco	487	25,996	38.32	46.65	48.90	4,143
Araba/Álava	78	4,427	34.53	40.59	45.32	624
Bizcaia	203	12,550	38.06	43.47	49.56	1,957
Gipuzkoa	207	9,020	40.53	54.05	49.73	1,562
Rioja, La	144	6,200	33.91	53.47	39.93	883
Ceuta	13	859	55.62	55.64	60.67	150
Melilla	11	851	42.65	52.10	63.99	157

6. Percentage distribution of Spanish travellers in each province by Autonomous City and Community of origin

Results by provinces

(Continued)

Provincias	Total	Andalucía	Aragón	Asturias, P. de	Balears, Illes	Canarias	Cantabria	Castilla y León	Castilla-La Mancha	Cataluña
TOTAL	100	17.19	2.84	2.62	1.93	3.09	1.42	4.95	3.15	15.44
Albacete	100	7.31	1.87	1.07	0.79	0.75	0.68	3.48	21.66	6.35
Alicante/Alacant	100	7.06	4.04	2.41	1.15	0.88	0.75	3.94	4.00	7.94
Almería	100	51.35	0.64	1.74	1.10	0.52	0.15	1.18	1.37	5.30
Araba/Álava	100	6.60	4.59	1.69	1.11	0.72	2.45	7.94	2.76	11.66
Asturias	100	4.84	1.23	16.46	1.50	1.31	4.27	10.03	3.46	8.18
Ávila	100	6.78	1.28	4.13	1.71	0.90	1.54	13.59	5.64	3.48
Badajoz	100	24.96	1.11	1.36	1.57	0.75	1.04	4.95	4.55	4.86
Balears, Illes	100	8.75	3.47	0.36	17.97	2.50	0.33	2.70	1.64	25.91
Barcelona	100	7.39	2.98	1.67	3.79	2.23	1.23	2.69	1.56	33.75
Bizkaia	100	4.59	2.92	4.27	1.95	1.38	2.29	5.54	2.14	14.88
Burgos	100	5.27	3.14	3.83	0.17	1.27	3.58	17.65	2.97	7.93
Cáceres	100	19.29	1.02	1.78	0.69	1.16	1.00	7.56	5.91	4.87
Cádiz	100	57.55	0.51	0.63	1.38	0.84	0.47	1.94	3.26	5.38
Cantabria	100	5.93	3.32	7.12	1.84	1.85	9.90	8.67	2.01	7.39
Castellón/Castelló	100	7.13	2.64	0.60	1.45	1.28	0.35	2.08	1.32	22.81
Ciudad Real	100	20.39	1.53	1.55	0.44	0.56	1.08	3.86	15.31	5.01
Córdoba	100	50.57	1.44	0.67	0.64	1.00	0.87	2.47	3.92	5.17
Coruña, A	100	5.30	0.87	5.99	1.69	1.46	1.25	5.79	1.74	10.11
Cuenca	100	8.84	2.54	2.64	0.83	0.82	0.62	4.47	14.25	6.45
Gipuzkoa	100	5.12	3.80	2.81	1.78	0.66	2.35	6.44	1.78	20.96
Girona	100	1.73	1.02	0.48	1.21	0.75	0.34	0.70	0.60	79.38
Granada	100	52.95	0.69	0.41	1.49	0.94	0.26	1.46	1.86	5.64
Guadalajara	100	5.63	2.78	0.53	0.82	0.41	0.67	4.55	17.06	8.21
Huelva	100	64.95	0.43	0.37	1.83	3.58	0.22	0.87	2.17	5.51
Huesca	100	3.04	32.80	1.26	1.19	0.13	0.77	1.39	1.64	29.25
Jaén	100	54.27	0.55	0.81	2.45	0.31	0.21	1.61	3.02	5.31
León	100	3.19	1.15	12.60	0.67	2.05	3.01	21.01	1.63	4.63
Lleida	100	1.95	2.89	0.31	0.44	0.40	0.28	1.26	0.79	77.20
Lugo	100	2.15	0.56	10.56	0.51	0.38	1.50	5.14	1.36	2.58
Madrid	100	15.47	2.74	2.83	2.45	3.63	1.91	5.16	3.26	13.41
Málaga	100	62.73	1.26	0.54	1.33	1.82	0.32	1.66	1.30	5.37
Murcia	100	14.78	1.43	0.62	1.75	0.81	0.46	2.18	4.00	9.49
Navarra	100	5.81	7.37	2.51	0.76	1.40	1.67	5.04	1.84	15.73
Ourense	100	2.09	0.70	3.68	0.66	0.27	0.38	7.00	1.12	3.74
Palencia	100	4.14	0.79	6.12	0.54	0.64	6.83	23.63	4.20	5.63
Palmas, Las	100	6.83	0.66	2.10	0.90	37.08	0.56	1.26	1.05	6.78
Pontevedra	100	3.91	0.68	4.29	1.30	1.00	1.65	7.36	1.52	7.22
Rioja, La	100	3.94	6.63	2.78	0.81	0.76	3.37	6.08	2.20	14.75
Salamanca	100	10.33	1.93	4.24	0.81	1.30	2.36	16.04	6.28	4.00
S. C. Tenerife	100	6.09	0.92	1.04	0.57	25.86	0.88	2.15	0.84	4.94
Segovia	100	4.66	1.69	4.09	0.88	0.64	1.91	12.59	5.40	5.19
Sevilla	100	45.99	1.35	0.87	1.43	1.82	0.86	2.29	2.18	8.28
Soria	100	6.67	7.19	2.19	0.34	0.67	1.48	15.28	4.09	8.66
Tarragona	100	4.25	5.07	0.36	1.87	1.43	0.41	1.33	0.92	63.33
Teruel	100	1.85	19.06	0.31	0.89	0.08	0.38	1.58	1.66	21.72
Toledo	100	11.92	1.92	1.58	0.88	0.50	1.03	5.57	14.86	5.99
Valencia/València	100	8.30	2.50	0.95	2.57	1.62	0.56	2.67	3.80	15.71
Valladolid	100	6.35	1.84	4.41	0.85	0.66	2.21	22.39	2.59	5.74
Zamora	100	5.66	1.99	6.03	0.26	0.36	2.52	20.90	2.68	4.39
Zaragoza	100	4.74	15.35	3.56	0.91	0.68	1.95	5.09	3.37	21.43
Ceuta	100	54.87	-	0.00	1.77	0.42	0.24	1.87	1.77	2.25
Melilla	100	57.11	1.14	0.94	0.91	3.05	0.45	0.71	1.18	4.37

6. Percentage distribution of Spanish travellers in each province by Autonomous City and Community of origin

Results by provinces

(Conclusion)

Provinces	Comunitat Valenciana	Extremadura	Galicia	Madrid, C. de	Murcia, Región de	Navarra, C. Foral de	País Vasco	Rioja, La	Ceuta	Melilla
TOTAL	9.02	1.82	5.59	20.53	2.52	1.29	5.36	0.74	0.30	0.23
Albacete	20.86	1.22	1.70	20.17	8.66	0.95	1.57	0.35	0.47	0.09
Alicante/Alacant	38.03	1.11	2.42	16.29	4.28	1.99	2.84	0.70	0.10	0.07
Almería	10.40	0.33	0.90	9.90	12.76	0.18	1.17	0.20	0.16	0.64
Araba/Álava	6.34	0.63	4.60	22.79	0.57	2.53	21.46	1.36	0.04	0.17
Asturias	2.52	1.26	10.53	23.39	0.96	1.26	8.07	0.58	0.09	0.06
Ávila	4.25	2.76	4.32	45.30	0.82	0.53	2.44	0.24	0.23	0.06
Badajoz	4.86	17.96	2.17	24.04	1.59	0.82	2.66	0.58	0.11	0.06
Balears, Illes	9.53	0.21	2.41	18.36	0.59	0.16	2.43	2.53	0.10	0.04
Barcelona	8.01	1.10	3.55	19.61	1.59	1.56	5.74	0.87	0.57	0.10
Bizkaia	3.62	0.47	3.48	21.83	0.86	3.37	24.46	1.73	0.21	0.01
Burgos	3.41	0.83	5.99	27.38	0.98	3.33	11.07	1.08	0.09	0.01
Cáceres	3.13	11.32	2.11	35.18	0.93	0.52	2.94	0.11	0.30	0.19
Cádiz	3.20	1.90	1.26	16.60	1.21	0.36	1.69	0.14	1.61	0.06
Cantabria	4.99	0.81	4.76	22.22	0.49	1.72	15.40	1.31	0.10	0.14
Castellón/Castelló	38.02	0.41	2.38	12.06	1.43	0.42	5.09	0.42	0.10	-
Ciudad Real	8.01	4.08	2.43	28.73	2.83	1.08	2.88	0.20	0.02	-
Córdoba	4.46	2.98	1.45	18.79	2.44	0.71	1.68	0.48	0.15	0.12
Coruña, A	3.43	1.29	39.47	16.85	0.70	0.41	2.74	0.77	0.13	0.03
Cuenca	17.70	1.40	1.40	33.04	3.07	0.44	1.29	0.22	-	-
Gipuzkoa	3.68	1.22	3.63	17.88	0.82	3.16	22.80	1.04	0.06	0.00
Girona	3.45	0.47	0.62	5.61	0.33	0.42	2.65	0.26	-	-
Granada	7.57	1.19	1.22	17.21	4.54	0.39	0.76	0.21	0.48	0.74
Guadalajara	5.61	1.43	2.15	44.43	1.62	1.02	2.67	0.26	0.07	0.10
Huelva	2.13	2.79	0.53	11.69	0.51	0.18	1.75	0.14	0.05	0.31
Huesca	3.82	1.09	0.70	11.82	0.04	3.08	6.31	1.48	0.21	-
Jaén	6.14	0.86	1.23	16.66	4.57	0.32	1.27	0.23	0.18	-
León	2.76	1.15	15.93	19.80	0.32	1.40	7.09	1.50	0.03	0.08
Lleida	4.21	0.32	0.95	4.88	0.46	0.46	2.74	0.26	0.14	0.07
Lugo	1.35	0.32	59.65	9.36	1.32	0.33	2.45	0.49	-	-
Madrid	8.86	2.63	4.64	21.06	2.75	1.66	5.51	0.94	0.49	0.60
Málaga	3.09	0.83	2.64	12.00	1.28	0.25	2.08	0.11	0.76	0.63
Murcia	19.29	0.73	2.28	16.35	23.11	0.27	1.63	0.25	0.37	0.19
Navarra	4.80	0.29	3.28	18.70	0.72	9.11	18.04	2.86	0.06	-
Ourense	1.81	0.34	62.30	12.99	0.14	0.32	2.35	0.11	-	-
Palencia	2.80	1.63	11.14	18.52	0.90	2.49	8.56	1.44	-	-
Palmas, Las	1.78	0.22	1.96	32.28	0.10	0.38	5.79	0.24	0.02	0.02
Pontevedra	2.35	0.36	44.27	18.04	1.59	0.75	3.48	0.21	0.02	-
Rioja, La	6.29	0.44	2.56	22.57	1.06	3.98	18.35	3.37	0.01	0.04
Salamanca	3.41	4.61	5.52	29.36	1.18	1.68	6.04	0.85	0.07	-
S. C. Tenerife	1.14	0.25	2.30	47.59	0.27	0.54	4.26	0.24	0.03	0.08
Segovia	3.81	3.23	4.33	44.52	1.14	1.06	4.24	0.54	0.04	0.02
Sevilla	4.01	3.21	1.61	19.87	2.01	0.52	2.64	0.36	0.54	0.15
Soria	5.30	1.33	2.65	32.75	0.89	1.72	6.98	1.65	0.08	0.08
Tarragona	8.46	0.67	1.76	6.06	1.03	0.40	1.66	0.44	0.28	0.28
Teruel	29.90	1.38	0.75	13.30	1.76	1.21	3.23	0.88	0.07	-
Toledo	7.72	3.39	2.98	32.17	2.46	1.23	4.99	0.56	0.21	0.05
Valencia/València	28.75	0.71	1.70	20.15	4.82	0.56	3.78	0.31	0.08	0.45
Valladolid	4.09	1.90	7.41	31.43	1.18	1.54	4.56	0.74	0.06	0.05
Zamora	3.62	2.71	13.59	27.75	1.24	1.39	3.98	0.84	0.07	-
Zaragoza	7.43	0.64	2.39	20.39	1.34	2.09	6.93	1.59	0.06	0.03
Ceuta	2.48	1.20	0.47	26.85	0.12	-	0.35	-	5.32	-
Melilla	2.47	1.19	0.94	13.24	2.96	0.46	1.86	0.80	0.81	5.41

7. Percentage distribution of overnight stays in each province by Autonomous City and Community of origin

Results by provinces

(Continued)

Provinces	Total	Andalucía	Aragón	Asturias, P. de	Balears, Illes	Canarias	Cantabria	Castilla y León	Castilla-La Mancha	Cataluña
TOTAL	100	16.02	3.05	2.63	2.10	3.97	1.25	4.91	3.24	14.42
Albacete	100	7.18	1.02	0.68	0.70	0.42	0.33	2.52	33.63	5.17
Alicante/Alacant	100	7.93	5.47	4.21	1.13	1.28	0.99	5.72	3.79	7.19
Almería	100	44.58	0.42	3.26	1.87	1.17	0.11	1.31	1.15	9.71
Araba/Álava	100	7.47	4.14	1.73	1.21	0.85	2.02	8.64	2.62	11.42
Asturias	100	6.78	1.19	13.12	2.00	1.53	3.40	9.12	4.08	8.48
Ávila	100	9.11	1.38	3.43	2.14	0.81	1.67	12.39	4.91	4.12
Badajoz	100	25.35	0.92	1.42	2.66	0.57	0.86	4.02	3.82	4.63
Balears, Illes	100	11.42	4.80	0.27	9.76	3.74	0.29	2.39	2.11	25.65
Barcelona	100	8.68	2.77	1.53	3.75	2.34	1.23	2.65	1.65	33.42
Bizkaia	100	5.52	2.59	4.40	2.35	1.89	2.46	5.26	3.25	14.35
Burgos	100	5.15	2.73	3.92	0.15	2.16	2.90	21.09	2.68	9.16
Cáceres	100	18.10	2.20	1.60	0.54	0.81	0.63	6.71	4.77	5.63
Cádiz	100	50.97	0.61	0.67	1.17	0.86	0.69	2.38	4.91	6.08
Cantabria	100	8.05	3.63	6.85	2.22	2.25	8.24	8.72	1.58	7.08
Castellón/Castelló	100	6.61	2.71	0.93	1.84	3.44	0.28	2.40	2.33	24.61
Ciudad Real	100	20.20	1.23	1.57	0.33	0.40	1.08	3.23	19.89	4.49
Córdoba	100	47.88	1.68	0.70	0.75	1.94	0.91	2.28	3.70	5.70
Coruña, A	100	5.77	0.94	5.65	2.25	2.32	0.91	4.94	1.34	10.18
Cuenca	100	10.89	2.33	2.86	0.58	0.86	0.43	4.15	13.92	6.27
Gipuzkoa	100	5.50	3.45	2.79	1.94	0.88	2.18	5.48	2.01	21.98
Girona	100	2.09	0.97	2.82	1.27	1.47	0.27	0.68	0.52	72.49
Granada	100	47.09	0.77	0.48	2.59	1.87	0.33	2.63	1.61	6.48
Guadalajara	100	5.66	2.63	0.73	0.95	0.51	0.50	4.66	20.32	6.89
Huelva	100	49.42	0.43	0.48	3.80	5.40	0.21	1.32	1.68	9.09
Huesca	100	2.96	36.69	2.71	0.73	0.06	1.06	1.17	1.72	28.81
Jaén	100	52.55	0.48	0.75	3.54	0.25	0.15	1.69	3.33	6.63
León	100	2.90	0.84	10.94	0.54	2.55	2.60	25.56	1.76	4.37
Lleida	100	1.75	2.84	0.26	0.81	0.37	0.26	1.09	0.99	74.97
Lugo	100	1.79	0.29	6.72	0.51	0.20	1.31	5.11	1.09	2.99
Madrid	100	15.95	2.64	3.05	2.99	4.20	1.90	5.16	3.10	13.23
Málaga	100	51.91	2.59	0.56	1.04	3.00	0.34	2.60	1.93	7.28
Murcia	100	14.59	2.29	0.67	2.54	0.87	0.54	2.32	3.77	10.67
Navarra	100	6.84	7.82	2.59	0.63	1.72	1.67	4.71	1.52	15.67
Ourense	100	2.16	0.63	4.10	0.54	0.16	0.24	8.46	1.15	3.15
Palencia	100	6.07	0.57	5.19	0.42	0.39	6.46	24.45	5.76	5.62
Palmas, Las	100	6.49	0.75	2.47	0.68	27.22	0.89	1.36	1.33	6.93
Pontevedra	100	3.06	0.47	3.51	1.91	1.20	1.01	6.70	1.44	7.33
Rioja, La	100	5.00	6.45	2.64	1.64	0.73	2.83	7.09	3.29	13.41
Salamanca	100	11.70	1.87	3.77	0.86	1.37	2.03	20.54	6.45	5.28
S. C. Tenerife	100	5.07	1.37	1.50	0.40	14.98	0.93	2.82	0.83	5.10
Segovia	100	5.25	1.53	3.76	0.82	0.63	2.30	14.68	6.86	6.22
Sevilla	100	40.34	2.04	1.07	1.73	2.17	0.98	2.63	2.50	9.62
Soria	100	10.09	6.27	1.59	0.26	0.55	1.60	17.20	4.92	9.36
Tarragona	100	7.75	4.65	1.12	3.82	3.35	0.68	1.51	1.56	51.41
Teruel	100	3.02	26.12	0.26	0.62	0.04	0.20	1.07	2.10	21.74
Toledo	100	12.88	1.88	1.85	0.90	0.49	0.99	6.03	13.37	6.83
Valencia/València	100	9.27	2.18	1.32	3.14	3.28	0.63	3.37	5.34	15.78
Valladolid	100	7.31	2.51	4.38	0.95	0.71	2.11	22.59	2.25	5.72
Zamora	100	7.31	2.27	5.79	0.24	0.41	2.67	22.88	2.17	4.67
Zaragoza	100	5.48	17.14	2.77	0.92	1.92	2.08	4.93	3.62	18.73
Ceuta	100	49.38	-	0.27	1.05	0.38	0.31	1.20	0.66	1.40
Melilla	100	63.39	0.63	0.65	0.59	2.95	0.37	0.50	1.11	2.90

7. Percentage distribution of overnight stays in each province by Autonomous City and Community of origin

Results by provinces

(Conclusion)

Provinces	Comunitat Valenciana	Extremadura	Galicia	Madrid, C. de	Murcia, Región de	Navarra, C. Foral de	País Vasco	Rioja, La	Ceuta	Melilla
TOTAL	8.99	1.72	5.93	21.55	2.27	1.30	5.50	0.74	0.23	0.18
Albacete	17.02	0.77	1.50	20.01	6.71	0.68	1.04	0.26	0.35	0.04
Alicante/Alacant	26.83	1.49	3.43	17.38	3.09	2.59	5.94	1.47	0.05	0.03
Almería	11.96	0.30	0.58	10.94	8.40	1.42	2.37	0.09	0.13	0.23
Araba/Álava	4.96	0.60	4.57	21.69	0.72	2.07	24.04	1.07	0.04	0.14
Asturias	3.51	1.37	11.07	23.78	1.53	1.40	6.93	0.62	0.05	0.05
Ávila	4.43	2.79	5.73	42.21	1.24	0.48	2.62	0.36	0.16	0.04
Badajoz	4.95	15.80	2.59	27.08	1.81	0.68	2.20	0.42	0.15	0.06
Balears, Illes	11.31	0.20	2.87	18.59	0.38	0.10	3.64	2.38	0.09	0.01
Barcelona	7.10	1.62	3.40	19.18	1.52	2.34	5.38	0.71	0.65	0.11
Bizkaia	4.93	0.64	3.71	21.50	0.81	2.72	22.01	1.44	0.17	0.01
Burgos	3.09	0.90	6.00	25.33	2.06	2.78	8.93	0.87	0.08	0.01
Cáceres	2.30	12.52	3.37	36.59	0.81	0.55	2.42	0.16	0.20	0.10
Cádiz	4.80	1.68	1.54	17.54	1.61	1.19	1.82	0.28	1.16	0.04
Cantabria	5.84	1.09	4.12	26.28	0.46	1.31	10.89	1.29	0.05	0.06
Castellón/Castelló	28.06	1.09	3.92	13.71	0.69	1.60	5.26	0.45	0.05	-
Ciudad Real	6.98	4.53	2.22	27.13	2.74	1.34	2.49	0.12	0.01	-
Córdoba	4.78	2.74	2.03	18.83	2.64	0.77	1.98	0.37	0.13	0.17
Coruña, A	3.14	1.22	41.61	14.85	0.65	0.31	3.20	0.57	0.12	0.04
Cuenca	15.65	1.16	1.12	34.11	3.10	0.34	1.30	0.92	-	-
Guipúzcoa	4.38	1.14	3.85	17.24	0.78	2.91	22.35	1.02	0.05	0.06
Girona	4.50	1.09	0.67	7.26	0.27	0.37	2.66	0.61	-	-
Granada	8.46	1.19	1.44	18.48	4.06	0.35	0.85	0.21	0.42	0.68
Guadalajara	6.07	2.36	2.12	40.98	1.79	0.78	2.43	0.44	0.07	0.13
Huelva	1.98	3.62	0.85	15.94	0.45	0.30	4.77	0.13	0.02	0.11
Huesca	3.93	1.48	0.58	9.34	0.04	2.26	5.25	1.13	0.10	-
Jaén	5.73	0.72	1.77	15.83	4.22	0.27	1.63	0.31	0.15	-
León	2.64	1.15	14.69	17.45	0.32	2.49	7.28	1.79	0.05	0.07
Lleida	5.00	0.35	0.88	6.78	0.54	0.37	2.33	0.28	0.09	0.05
Lugo	0.85	0.19	61.92	13.23	0.88	0.54	1.71	0.68	-	-
Madrid	9.17	2.54	4.86	19.41	2.76	1.55	5.58	0.86	0.46	0.60
Málaga	3.01	1.01	6.01	11.59	1.52	0.19	4.30	0.20	0.55	0.39
Murcia	18.53	1.05	3.48	18.34	18.04	0.29	1.45	0.17	0.24	0.13
Navarra	4.63	0.57	5.79	18.41	0.82	8.29	15.00	3.23	0.09	-
Ourense	1.48	0.27	56.94	18.30	0.12	0.26	1.97	0.08	-	-
Palencia	3.06	2.86	9.24	17.47	0.87	1.72	8.69	1.18	-	-
Palmas, Las	2.16	0.24	2.87	36.23	0.14	0.48	9.35	0.27	0.01	0.13
Pontevedra	1.84	0.28	48.69	15.39	3.28	0.70	3.01	0.18	0.01	-
Rioja, La	7.52	0.87	2.75	21.93	0.77	3.65	15.13	4.27	0.01	0.04
Salamanca	2.94	4.26	4.92	25.26	1.01	1.29	5.86	0.55	0.04	-
S. C. Tenerife	0.92	0.25	3.33	55.86	0.14	0.57	5.62	0.23	0.02	0.06
Segovia	4.09	2.72	3.38	40.23	1.96	0.99	3.99	0.50	0.09	0.01
Sevilla	4.48	2.97	1.84	21.17	1.83	0.70	2.92	0.34	0.49	0.19
Soria	4.01	0.96	4.27	28.74	0.89	1.84	6.14	1.19	0.04	0.09
Tarragona	7.44	0.94	3.37	8.35	1.26	0.41	1.53	0.38	0.21	0.25
Teruel	24.46	1.24	0.52	12.94	1.45	0.81	2.77	0.61	0.04	-
Toledo	8.23	3.48	3.76	28.86	2.37	1.30	5.97	0.57	0.21	0.03
Valencia/València	24.68	1.03	2.18	18.10	3.70	0.40	4.90	0.23	0.06	0.40
Valladolid	3.92	1.79	7.53	30.72	1.26	1.23	4.30	0.62	0.04	0.05
Zamora	3.18	2.52	13.68	24.74	1.53	1.25	4.00	0.64	0.05	-
Zaragoza	6.35	0.90	2.24	22.50	1.74	1.61	5.72	1.27	0.06	0.02
Ceuta	22.66	0.46	0.23	17.40	0.12	-	0.47	-	4.00	-
Melilla	1.90	0.85	1.04	14.50	2.07	0.40	1.38	0.52	0.49	3.75

8. Travellers, overnight stays and average stay by country of residence

Results by countries

Countries	Number of travellers		Overnight stays	
	Total	%	Total	%
TOTAL	4,909,224	100.00	14,623,835	100.00
Residents in Spain	2,873,387	58.53	6,247,847	42.72
Residents abroad	2,035,837	41.47	8,375,989	57.28
Total Residents abroad	2,035,837	100.00	8,375,989	100.00
Total Residents in U.E. (without Spain)	1,416,105	69.56	6,726,993	80.31
- Germany	328,454	16.13	2,291,016	27.35
- Austria	19,539	0.96	96,746	1.16
- Belgium	55,092	2.71	295,204	3.52
- Denmark	29,448	1.45	152,741	1.82
- Finland	26,677	1.31	149,868	1.79
- France	202,623	9.95	453,851	5.42
- Greece	8,049	0.40	22,236	0.27
- Ireland	27,630	1.36	118,704	1.42
- Italy	127,535	6.26	350,238	4.18
- Luxembourg	2,898	0.14	19,553	0.23
- Netherlands	72,093	3.54	312,748	3.73
- Poland	23,679	1.16	104,243	1.24
- Portugal	56,362	2.77	111,339	1.33
- United Kingdom	326,079	16.02	1,721,508	20.55
- Czech Republic	6,950	0.34	25,836	0.31
- Sweden	65,040	3.19	381,454	4.55
- Rest of UE*	37,956	1.86	119,708	1.43
Norway	35,798	1.76	221,091	2.64
Russia	34,439	1.69	132,860	1.59
Switzerland	30,932	1.52	123,598	1.48
Rest of Europe	58,729	2.88	150,058	1.79
Japan	51,010	2.51	83,007	0.99
United States of America	114,504	5.62	251,297	3.00
Rest of America	136,675	6.71	325,557	3.89
African's countries	30,308	1.49	64,457	0.77
Rest of the world	127,337	6.25	297,070	3.55

*Countries included in the Rest of UE: Bulgaria, Cyprus, Slovakia, Slovenia, Estonia, Hungary, Latvia, Lithuania, Malta and Romania

Hotel Price Index (HPI). 2008 Base

November 2011

Provisional data

General Autonomous Cities and Communities and national indices

	Index	Interannual variation rate
TOTAL	92.9	-0.3
Andalucía	93.4	-2.1
Aragón	81.0	-5.4
Asturias, Principado de	94.1	-1.8
Balears, Illes	93.2	-3.7
Canarias	99.0	4.1
Cantabria	89.8	-4.9
Castilla y León	93.3	-2.6
Castilla - La Mancha	91.9	-3.7
Cataluña	90.6	-0.3
Comunitat Valenciana	93.5	-1.2
Extremadura	95.3	-0.5
Galicia	93.9	-6.4
Madrid, Comunidad de	84.9	-2.0
Murcia, Región de	84.5	-4.6
Navarra, Comunidad Foral de	90.0	-0.9
País Vasco	90.2	-2.9
Rioja, La	92.6	0.6
Ceuta	94.2	0.5
Melilla	99.5	5.9

National General Index and breakdown by categories

	Index	Interannual variation rate
TOTAL	92.9	-0.3
HOTELS: Gold stars		
Five	90.5	-1.4
Fourth	92.7	1.1
Three	92.9	-2.0
Two	94.6	-2.0
One	94.3	-0.7
HOSTALS: Silver stars		
Three and two	93.7	-2.1
One	100.6	-0.4

Indicators on the Profitability of the Hotel Sector

November 2011

Provisional data

ADR and RevPAR for Autonomous Cities and Communities and national indices

	ADR (in euros)	Variation Rate variation	RevPar (in euros)	Variation Rate variation
TOTAL	69.0	0.5	33.9	0.8
Andalucía	58.0	-2.9	22.9	-6.0
Aragón	52.1	-4.2	13.3	-11.3
Asturias, Principado de	58.3	2.2	17.1	1.4
Balears, Illes	59.6	2.5	28.3	-12.4
Canarias	74.6	1.5	61.0	9.9
Cantabria	58.2	-6.3	16.7	-4.7
Castilla y León	54.3	-2.2	16.6	-10.2
Castilla - La Mancha	56.8	-4.3	16.0	-11.8
Cataluña	85.7	4.3	40.8	5.2
Comunitat Valenciana	52.6	-2.3	25.6	-0.3
Extremadura	55.6	-1.4	17.0	-1.5
Galicia	51.4	-7.3	13.2	-22.9
Madrid, Comunidad de	82.5	-1.0	50.3	-0.7
Murcia, Región de	54.4	-6.0	22.4	-10.8
Navarra, Comunidad Foral de	63.0	-2.2	20.6	-6.1
País Vasco	66.3	-8.9	32.3	-9.0
Rioja, La	62.5	10.1	25.0	3.4
Ceuta	69.6	6.0	42.8	19.2
Melilla	66.2	7.9	42.3	41.2

National ADR and RevPar and breakdown by categories

	ADR (in euros)	Variation Rate interannual	RevPar (in euros)	Variation Rate interannual
TOTAL	69.0	0.5	33.9	0.8
HOTELS: Gold stars				
Five	140.7	-3.5	75.2	-1.9
Four	74.9	0.9	45.2	2.5
Three	54.2	-0.5	28.8	0.6
Two	49.0	1.8	17.1	-5.0
One	45.8	-1.4	12.5	-7.3
GUESTHOUSES: Silver stars				
Three and two	42.4	0.3	10.4	-7.3
One	34.9	-2.3	8.6	-6.1

Due to the updating in the establishments directory carried out in Navarra in January 2011 and in Extremadura in March 2011, the data to be published for Navarra, Extremadura and the national total from those dates are not directly comparable with the data published last year, therefore, data link coefficients have been calculated to allow the comparison of data between different years. These coefficients are available in INE website (www.ine.es/en/welcome_en.htm)