

23 January 2012

Hotel Tourism Short-Term Trends (HOS/HPI/HII)
Year 2011. *Provisional data*

Overnight stays at hotel establishments increase 6.4%¹ in 2011

Hotels earn 40.3 euros per available room and invoice an average of 70.3 euros per occupied room²

Overnight stays at hotel establishments reached 286.6 million in 2011, with an increase of 6.4% as compared with the previous year. This rate was 0.9 points higher than that registered in the year 2010.

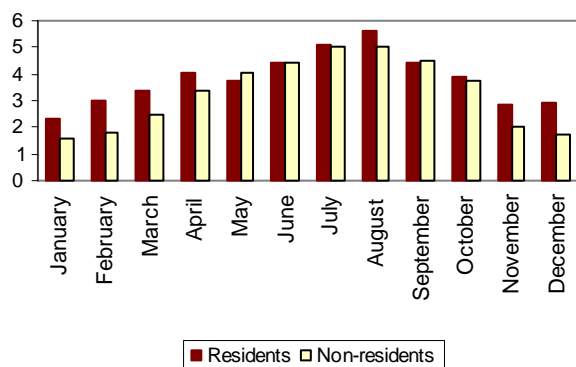
Overnight stays of residents decreased 2.2%, whereas overnights stays of non-residents increased 12.7%. 38.8% of the total overnight stays were by resident guests, who represented 53.5% of the total guests.

Of the total overnight stays, 49.7% were accounted for during the months between June and September.

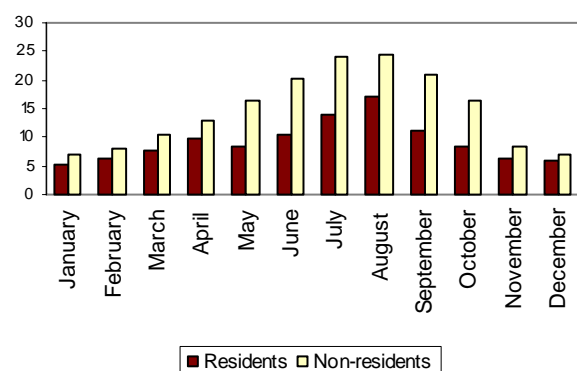
In turn, the Hotel Price Index (HPI) registered a 0.2% average increase during the year 2011.

Regarding the indicators on the profitability of the hotel sector, invoicing per occupied room reached an average value of 70.3 euros, and income per available room stood at 40.3 euros.

**Number of guests in the year 2011
(in millions)**



**Number of overnights stays in the year 2011
(in millions)**

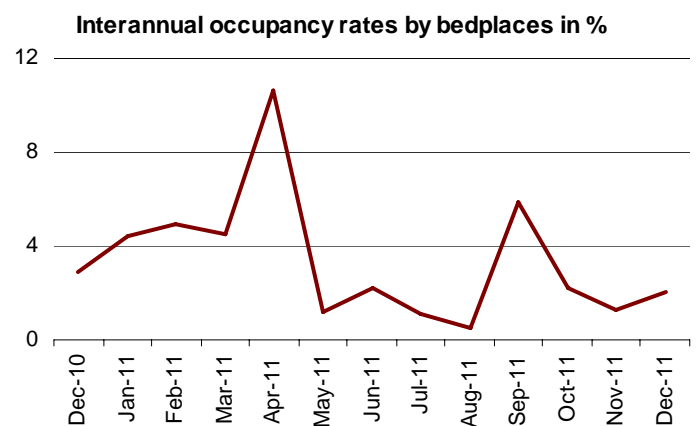
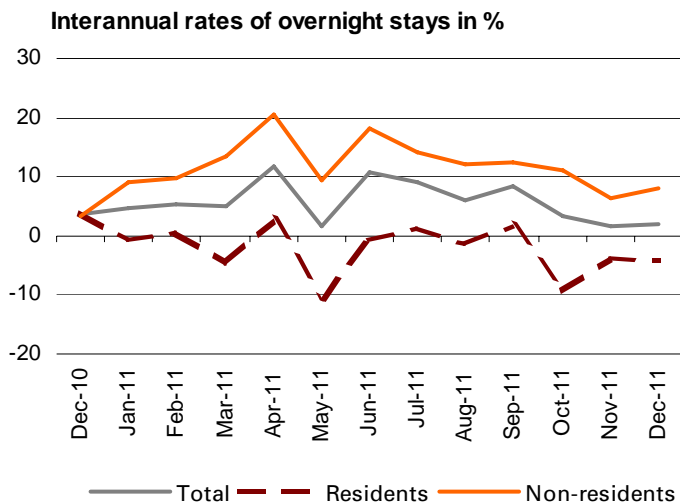


¹Due to the update made in the directory of hotel establishments in Canarias, the data published as of July 2010 (for Canarias and the national total), for the HOS and the ADR cannot be directly compared to those published last year. To bridge this gap in the series, some linking coefficients have been calculated to allow users to compare data from different years. The coefficients are published monthly on the INE website in the section dedicated to each statistical operation, in a specific section entitled linking coefficients.

²The average interannual variation rates of the year for the HPI and HII are calculated as the average of the interannual variation rates for the HPI and HII, respectively, weighted by the number of occupied rooms each month.

Spanish hotels offered an average of 1,424,711 bedplaces during 2011, representing an increase of 1.0% as compared with the year 2010.

The occupancy rate by bedplaces reached an average of 53.6%, 4.9% more than in 2010. The average weekend occupancy rate by bedplaces stood at 58.4%, 3.7% more than that recorded the previous year.



Overnight stays of guests resident abroad

German and British citizens accounted for 26.9% and 24.1%, respectively, of the total overnight stays by foreign nationals in hotels during the year 2011.

The German market, consolidated as the main country of origin, registered an increase of 10.4% in overnight stays. In turn, the British market experienced a 7.8% increase in overnight stays.

France, Italy and the Netherlands, which were the following countries of origin, showed interannual rates of overnight stays of 14.2%, 14.3% and 15.8%, respectively.

Main destinations

By Autonomous Community, Canarias, Illes Balears, Cataluña and Andalucía accounted for 70.7% of the total overnight stays in 2011, with annual increases of 12.3%, 11.7%, 5.9% and 3.1%, respectively.

Andalucía, Cataluña, Comunitat Valenciana, Canarias and Comunidad de Madrid accounted for 56.9% of resident overnight stays. In turn, Illes Balears, Canarias, Cataluña and Andalucía were the destinations preferred by non-residents.

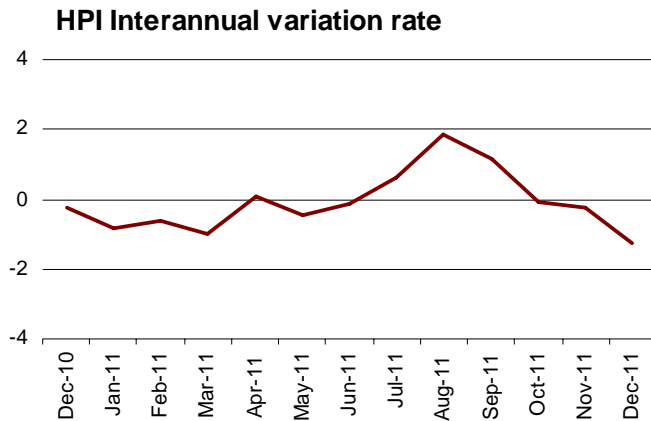
The tourist area that registered the highest number of overnight stays in 2011 was the island of Mallorca, with 41.6 million occupied bedplaces.

The tourist site with the highest number of overnight stays were Madrid, Barcelona and San Bartolomé de Tirajana. The tourist site with the highest occupancy rate was Lloret de Mar, where, on average, 78.1% of the bedplaces available during the year were occupied.

Evolution of the Hotel Price Index

The average growth in hotel prices during 2011 was 0.2%.

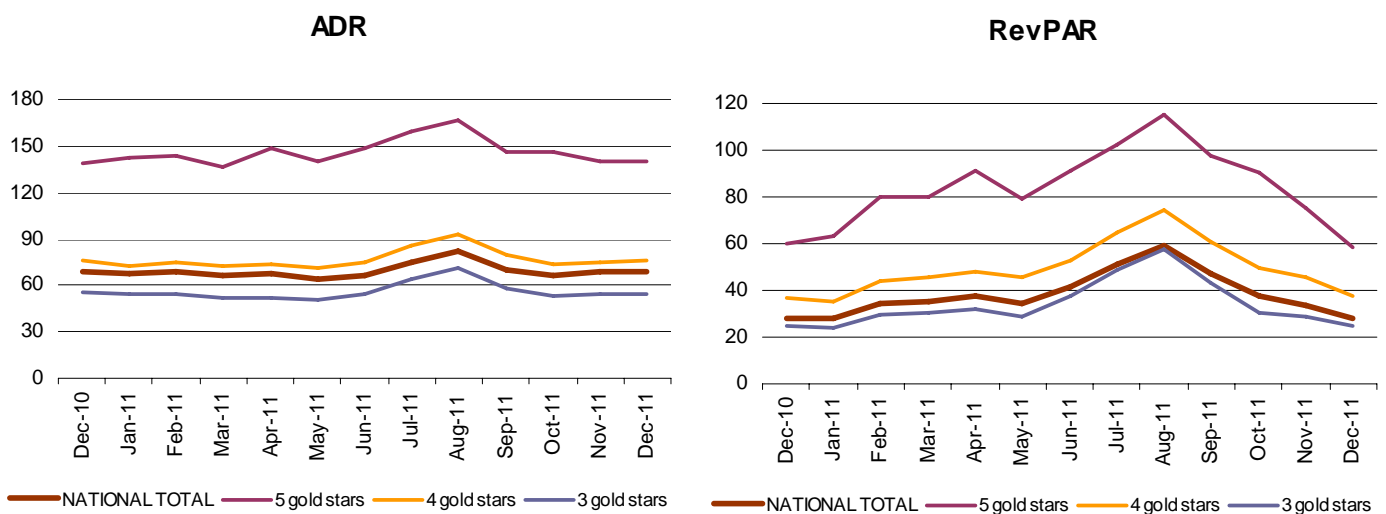
The Hotel Price Index interannual rate reached the highest rate in August (1.8%) and the lowest was in December (-1.3%).



Indicators on the Profitability of the Hotel Sector

The average invoicing per occupied room (ADR) was 70.3 euros in 2011. In turn, income per available room (RevPAR), conditioned by the occupancy registered in the hotel establishments, reached an average value of 40.3 euros.

By category, the average invoicing was 147.6 euros for five-star hotels, 78.1 euros for four-star hotels and 57.7 euros for three-star hotels. Income per available room for these same categories was 86.0, 51.6 and 36.7 euros, respectively.



Hotel Tourism Short-Term Trends in the month of December

During the past month of December, 13.0 million overnight stays were recorded, which was an increase of 2.0% as compared with the same month of the previous year.

Overnight stays of residents decreased 4.2%, and those of non-residents increased 8.0%. The average stay increased 3.4% as compared with December 2010.

In December, 38.1% of the available bedplaces were occupied, 2.1% more than in the same month the previous year. The weekend occupancy rate by bedplaces stood at 41.6%, with an interannual increase of 5.0%.

Guests from Germany and the United Kingdom accounted for 47.0% of the total for non-residents in December. Both markets experienced interannual increases in overnight stays (from 6.2% to 5.2%, respectively).

The main destination chosen by non-resident guests was Canarias, with 55.2% of the total overnight stays of non-residents. In turn, Andalucía, Comunidad de Madrid and Comunitat Valenciana were the main destinations of choice of resident guests.

The Autonomous Community with the highest occupancy rate by bedplaces was Canarias during December (64.2%). It was followed by Comunidad de Madrid (47.1%) and País Vasco (37.0%).

The tourist areas with the highest occupancy and overnight stay rates were located on the islands and the coasts. Gran Canaria recorded the highest occupancy rate by bedplaces (71.5%) and the highest weekend occupancy rate by bedplaces (72.4%). Tenerife registered 1.8 million overnight stays in December.

The tourist sites with the highest number of overnight stays were Madrid, Barcelona and San Bartolomé de Tirajana. Mogán reached the highest occupancy rate by bedplaces (76.4%), and the highest weekend occupancy (76.9%).

The Hotel Price Index (HPI) registered a 1.3% decrease in December, this rate being 1.0 point lower than that registered in the same month of 2010.

Regarding the indicators on the profitability of the hotel sector, invoicing per occupied room reached an average value of 69.3 euros, and income per available room stood at 28.3 euros. Both values were similar to those recorded in December 2010.

Tourist Accommodation Occupancy Survey (Hotels and similar establishments)

December 2011

Provisional data

1. Travellers, overnight stays and average stay by categories of establishment

Category	Number of travellers			Number of overnight stays			Average stay
	Total	Residents in Spain	Residents abroad	Total	Residents in Spain	Residents abroad	
TOTAL	4,601,737	2,892,681	1,709,056	13,043,204	6,063,682	6,979,523	2.83
HOTELS: Golden stars							
Five	303,304	145,044	158,260	901,699	293,513	608,186	2.97
Four	2,171,200	1,293,859	877,341	6,562,539	2,618,667	3,943,873	3.02
Three	1,204,697	780,767	423,930	3,538,591	1,736,343	1,802,248	2.94
Two	347,405	253,932	93,473	777,844	522,695	255,149	2.24
One	131,995	97,313	34,681	275,802	176,257	99,544	2.09
INNS: Silver stars							
Two and three	241,340	181,365	59,975	483,340	355,554	127,786	2.00
One	201,795	140,399	61,396	503,389	360,653	142,736	2.49
Interannual rate	-1.20	-3.82	3.56	1.97	-4.18	7.99	3.43
Cumulative interannual rate	3.80	-1.42	10.57	6.38	-2.17	12.67	2.48

2. Open establishments, capacity, occupancy and employed personnel by categories of establishment

Category	Estimated open establishments	Estimated bedplaces	Level of occupancy			Employed personnel
			Per bedplaces	Per bedplaces at weekend	Per rooms	
TOTAL	13,094	1,097,396	38.10	41.58	41.02	146,394
HOTELS: Golden stars						
Five	231	74,441	38.82	42.86	42.13	21,171
Four	1,667	461,497	45.52	49.45	49.10	69,147
Three	1,983	274,979	41.31	44.66	44.60	32,679
Two	1,608	90,360	27.66	31.71	30.85	7,800
One	1,017	41,318	21.47	24.15	24.04	3,550
INNS: Silver stars						
Two and three	2,817	80,088	19.37	21.28	22.31	6,601
One	3,771	74,714	21.68	23.70	25.88	5,445
Interannual rate	-0.41	0.05	2.06	5.00	-0.19	-1.27

3. Travellers, overnight stays, occupancy, average stay and employed personnel

Results by areas and tourist sites

	Travellers		Overnight stays		Level of occupancy			Average stay	Employed personnel
	Residents in Spain	Residents abroad	Residents in Spain	Residents abroad	Per bedplac	Per bedplaces	Per rooms at weekend		

Tourist areas with a greater level of occupancy per month

Isla de Gran Canaria	36,567	137,118	141,456	1,125,935	71.47	72.43	78.61	7.30	10,099
Isla de Tenerife	72,538	183,274	343,953	1,494,275	69.46	69.05	74.19	7.19	15,467
Isla de Lanzarote	21,654	58,651	112,178	474,513	55.51	55.62	62.91	7.31	5,129
Isla de Fuerteventura	8,809	74,926	30,453	700,017	54.47	56.20	66.81	8.72	6,374
Isla de La Gomera	2,251	4,458	3,448	24,813	52.75	46.58	46.75	4.21	406
Barcelona	134,711	296,339	256,379	695,001	44.43	50.80	47.21	2.21	11,401
Costa de Gipuzkoa	30,700	11,060	55,348	19,869	43.93	51.11	47.84	1.80	939
Costa Blanca	116,027	59,027	455,591	307,028	43.72	53.35	49.11	4.36	6,869

Tourist areas with a greater number of overnight stays per month *

Costa del Sol	89,192	81,925	237,199	335,881	33.80	39.21	37.26	3.35	6,974
Isla de Mallorca	24,679	31,488	53,571	161,662	30.19	32.06	33.01	3.83	3,236
Costa Brava	55,357	45,832	107,995	100,894	31.54	31.27	28.81	2.06	2,199
Costa de Almería	33,725	5,316	103,183	20,664	22.79	21.61	26.83	3.17	1,121
Catalunya Central	42,163	15,558	74,778	34,783	27.23	30.71	34.46	1.90	1,665
Costa Daurada	47,812	11,456	79,232	26,741	23.94	33.97	24.54	1.79	1,158
Costa de la Luz de Cádiz	37,557	10,892	80,434	23,182	19.01	20.56	23.67	2.14	1,732
Costa del Garraf	26,084	23,701	46,564	44,495	23.47	24.11	29.54	1.83	1,403

Tourist sites with a greater level of occupancy per month

Mogán	1,568	34,732	9,171	287,168	76.43	76.91	83.50	8.16	1,767
Puerto de la Cruz	22,005	22,242	121,906	227,557	73.56	74.81	79.11	7.90	2,528
Arona	6,796	44,855	38,017	377,180	73.26	72.10	76.03	8.04	3,145
Adeje	17,172	83,948	91,503	678,922	71.77	71.97	77.50	7.62	6,611
San Bartolomé de Tirajana	16,955	86,766	84,112	765,519	70.71	71.64	77.53	8.19	7,502
Palmas de Gran Canaria (Las)	16,057	13,418	43,359	66,861	69.36	69.98	79.35	3.74	721
Monachil	15,614	3,143	47,647	8,325	64.90	65.74	61.34	2.98	468
Tías	2,545	19,222	12,077	161,912	58.78	55.46	65.61	7.99	1,432
Pájara	3,206	46,827	13,439	471,732	57.24	57.47	68.18	9.70	4,297
Yaiza	12,068	26,778	66,760	212,065	56.31	57.95	63.57	7.18	2,549

Tourist sites with a greater number of overnight stays per month *

Madrid	400,565	268,391	706,888	586,941	51.68	58.64	57.92	1.93	12,066
Barcelona	126,274	288,451	234,711	677,540	44.54	51.24	47.05	2.20	11,093
Benidorm	63,004	37,416	338,011	241,705	56.04	68.34	62.44	5.77	4,398
Sevilla	82,810	50,768	141,703	103,333	45.05	51.58	45.73	1.83	2,628
Granada	64,756	39,160	127,413	68,942	48.94	60.34	51.55	1.89	1,555
Valencia	64,636	34,042	109,827	72,138	34.15	37.54	35.03	1.84	2,082
Torremolinos	19,426	22,747	70,102	105,908	45.19	49.17	44.00	4.17	1,408
Palma	21,297	23,781	44,554	121,825	36.87	39.63	41.05	3.69	2,281
Teguise	4,172	11,272	24,653	96,975	51.97	53.78	61.33	7.88	1,026
Málaga	30,514	23,699	54,030	44,726	34.97	40.72	40.32	1.82	1,204

* Not taken into account those included in the preceding table because they are in the bigger level of occupancy tables too.

4. Travellers, overnight stays and average stay

Results by Autonomous Cities and Communities and provinces

	Number of travellers			Overnight stays			Average stay
	Total	Residents in Spain	Residents abroad	Total	Residents in Spain	Residents abroad	
TOTAL	4,601,737	2,892,681	1,709,056	13,043,204	6,063,682	6,979,523	2.83
Andalucía	785,702	537,959	247,743	1,807,087	1,126,260	680,827	2.30
Almería	41,776	36,097	5,678	128,219	106,683	21,536	3.07
Cádiz	74,129	58,062	16,067	151,329	114,650	36,679	2.04
Córdoba	73,399	53,006	20,393	121,706	92,296	29,410	1.66
Granada	164,137	115,063	49,074	350,961	250,798	100,163	2.14
Huelva	39,280	33,108	6,172	88,874	63,041	25,833	2.26
Jaén	33,046	30,266	2,780	54,157	50,168	3,989	1.64
Málaga	191,722	105,923	85,800	601,833	259,114	342,718	3.14
Sevilla	168,214	106,434	61,779	310,010	189,511	120,499	1.84
Aragón	129,572	115,538	14,034	250,006	225,084	24,923	1.93
Huesca	36,009	33,569	2,440	86,632	82,124	4,508	2.41
Teruel	23,073	22,211	861	42,037	40,501	1,536	1.82
Zaragoza	70,490	59,758	10,732	121,338	102,459	18,878	1.72
Asturias, Principado de	64,623	59,751	4,872	120,616	109,962	10,654	1.87
Balears, Illes	61,671	28,794	32,877	229,070	63,178	165,892	3.71
Canarias	609,261	145,965	463,295	4,496,480	643,294	3,853,186	7.38
Palmas, Las	337,724	67,029	270,695	2,584,552	284,087	2,300,465	7.65
Santa Cruz de Tenerife	271,537	78,936	192,600	1,911,928	359,207	1,552,721	7.04
Cantabria	40,314	35,703	4,611	78,603	70,365	8,238	1.95
Castilla y León	249,887	220,393	29,494	421,836	374,986	46,849	1.69
Ávila	17,952	16,529	1,423	31,357	28,331	3,026	1.75
Burgos	37,549	31,295	6,254	59,887	51,853	8,034	1.59
León	37,195	34,648	2,547	66,352	61,341	5,011	1.78
Palencia	11,087	10,028	1,059	19,802	18,089	1,713	1.79
Salamanca	57,586	46,867	10,720	98,704	82,499	16,205	1.71
Segovia	25,150	22,867	2,283	40,252	36,823	3,429	1.60
Soria	11,648	11,199	449	21,696	20,656	1,041	1.86
Valladolid	37,903	34,096	3,807	62,369	55,539	6,830	1.65
Zamora	13,817	12,864	953	21,417	19,856	1,561	1.55
Castilla-La Mancha	128,500	112,046	16,454	216,110	190,307	25,803	1.68
Albacete	21,846	20,751	1,095	41,395	39,320	2,075	1.89
Ciudad Real	23,302	20,552	2,751	41,475	36,525	4,950	1.78
Cuenca	21,385	19,413	1,972	33,508	30,992	2,516	1.57
Guadalajara	15,723	13,964	1,759	26,238	23,564	2,674	1.67
Toledo	46,245	37,367	8,878	73,492	59,905	13,587	1.59
Cataluña	804,921	398,962	405,959	1,680,035	745,346	934,688	2.09
Barcelona	559,930	218,444	341,487	1,192,542	403,540	789,002	2.13
Girona	122,209	75,463	46,746	243,722	140,946	102,776	1.99
Lleida	55,083	49,754	5,329	123,085	108,381	14,704	2.23
Tarragona	67,699	55,302	12,397	120,686	92,479	28,206	1.78
Comunitat Valenciana	370,542	263,012	107,530	1,170,372	758,726	411,646	3.16
Alicante/Alacant	186,788	125,958	60,831	781,192	471,036	310,156	4.18
Castellón/Castelló	40,417	33,062	7,355	100,905	80,342	20,564	2.50
Valencia/València	143,337	103,992	39,345	288,275	207,348	80,927	2.01
Extremadura	82,102	71,990	10,113	135,288	119,119	16,169	1.65
Badajoz	42,480	36,669	5,811	70,669	61,162	9,507	1.66
Cáceres	39,622	35,321	4,301	64,619	57,957	6,662	1.63
Galicia	161,479	141,237	20,243	325,885	284,803	41,082	2.02
Coruña, A	70,253	60,654	9,599	147,595	127,238	20,357	2.10
Lugo	20,510	19,587	922	37,181	35,517	1,664	1.81
Ourense	20,210	18,821	1,389	33,895	30,810	3,085	1.68
Pontevedra	50,507	42,174	8,333	107,214	91,238	15,976	2.12
Madrid, Comunidad de	816,382	520,340	296,042	1,546,029	901,253	644,776	1.89
Murcia, Región de	56,050	47,391	8,659	117,083	92,410	24,672	2.09
Navarra, Comunidad Foral de	42,389	36,294	6,095	75,383	63,568	11,815	1.78
País Vasco	155,628	119,243	36,386	291,660	220,811	70,849	1.87
Araba/Álava	23,907	19,960	3,947	45,351	37,114	8,237	1.90
Bizkaia	78,273	60,281	17,992	145,199	109,147	36,051	1.86
Gipuzkoa	53,448	39,002	14,446	101,110	74,549	26,561	1.89
Rioja, La	32,991	30,858	2,134	59,679	56,361	3,318	1.81
Ceuta	6,021	4,450	1,571	12,757	10,136	2,621	2.12
Melilla	3,700	2,755	945	9,226	7,713	1,513	2.49

5. Establishment, capacity, occupancy and employed personnel

Results by Autonomous Cities and Communities and provinces

	Estimated open establishments	Estimated bedplaces	Level of occupancy			Employed personnel
			Per bedplaces	Per bedplaces at weekends	Per rooms	
TOTAL	13,094	1,097,396	38.10	41.58	41.02	146,394
Andalucía	2,141	190,515	30.44	34.08	32.90	22,068
Almería	150	19,125	21.62	20.70	25.29	1,336
Cádiz	315	24,791	19.62	21.80	22.84	2,720
Córdoba	210	11,412	34.05	37.05	36.93	1,414
Granada	400	28,638	39.15	47.01	40.74	3,170
Huelva	117	11,740	24.38	17.61	20.87	1,238
Jaén	184	9,078	19.18	21.96	21.07	1,043
Málaga	456	60,327	32.10	37.49	35.10	7,829
Sevilla	309	25,404	39.05	44.05	39.97	3,317
Aragón	771	36,938	21.66	24.86	21.95	3,913
Huesca	287	13,167	21.01	22.21	18.29	1,298
Teruel	202	6,630	20.18	28.02	21.17	766
Zaragoza	282	17,141	22.74	25.69	24.81	1,849
Asturias, Principado de	471	20,055	19.37	22.11	22.61	2,206
Balears, Illes	133	25,741	28.69	30.55	31.63	3,512
Canarias	527	224,305	64.16	64.76	71.47	38,022
Palmas, Las	267	133,607	61.96	62.95	71.05	21,603
Santa Cruz de Tenerife	259	90,698	67.39	67.43	72.07	16,419
Cantabria	247	11,413	22.06	24.57	23.40	1,647
Castilla y León	1,318	57,296	23.63	27.06	24.99	7,008
Ávila	96	4,773	21.09	27.11	20.47	568
Burgos	192	8,345	23.06	26.87	26.18	873
León	275	10,293	20.75	22.78	22.46	1,068
Palencia	84	3,169	20.10	17.37	22.40	333
Salamanca	205	10,345	30.51	37.86	30.66	1,290
Segovia	135	5,529	23.23	27.45	22.40	703
Soria	109	3,542	19.72	19.82	21.85	441
Valladolid	137	7,985	25.17	26.59	27.51	1,207
Zamora	85	3,315	20.74	24.58	23.11	523
Castilla-La Mancha	811	33,439	20.74	24.63	21.90	3,411
Albacete	167	6,772	19.70	21.11	20.44	690
Ciudad Real	183	7,416	18.00	19.21	21.18	784
Cuenca	156	5,429	19.81	24.16	19.44	539
Guadalajara	122	4,448	18.91	21.49	20.10	355
Toledo	184	9,375	25.08	33.22	25.81	1,042
Cataluña	1,739	155,585	34.66	39.46	36.52	20,781
Barcelona	866	98,256	39.00	44.38	42.34	14,987
Girona	377	25,393	30.79	31.28	28.04	2,777
Lleida	309	15,206	25.92	29.01	23.82	1,568
Tarragona	186	16,729	22.96	32.49	24.07	1,449
Comunitat Valenciana	871	103,412	36.32	42.83	39.22	11,928
Alicante/Alacant	404	60,195	41.67	50.75	46.53	7,276
Castellón/Castelló	144	10,859	29.85	34.56	28.92	1,069
Valencia/València	323	32,358	28.55	30.86	29.03	3,584
Extremadura	431	18,930	22.95	24.63	24.67	2,477
Badajoz	205	9,586	23.73	25.36	27.78	1,143
Cáceres	226	9,344	22.15	23.88	21.48	1,334
Galicia	1,382	55,667	18.80	21.16	21.92	6,317
Coruña, A	582	24,174	19.63	20.07	22.43	2,517
Lugo	268	8,530	14.01	14.19	16.50	918
Ourense	185	6,147	17.74	20.41	21.54	661
Pontevedra	347	16,815	20.41	26.54	24.13	2,221
Madrid, Comunidad de	1,166	105,256	47.09	53.26	52.66	14,935
Murcia, Región de	171	15,157	24.75	28.57	27.92	1,809
Navarra, Comunidad Foral de	275	11,223	21.63	24.27	26.53	1,368
País Vasco	482	25,213	37.04	40.18	41.74	3,856
Araba/Álava	75	4,380	33.04	38.03	39.01	614
Bizcaia	182	12,098	38.48	41.49	43.35	1,844
Gipuzkoa	225	8,734	37.05	39.46	40.87	1,398
Rioja, La	135	5,613	34.13	35.69	34.06	794
Ceuta	12	787	52.28	51.49	50.81	141
Melilla	11	851	34.87	34.36	47.93	201

6. Percentage distribution of Spanish travellers in each province by Autonomous City and Community of origin

Results by provinces

(Continued)

Provincias	Total	Andalucía	Aragón	Asturias, P. de	Balears, Illes	Canarias	Cantabria	Castilla y León	Castilla-La Mancha	Cataluña
TOTAL	100	16.42	2.66	2.38	1.98	2.84	1.41	4.72	3.19	16.51
Albacete	100	6.68	1.35	1.04	0.58	0.47	0.67	3.31	24.19	6.50
Alicante/Alacant	100	6.67	1.32	1.96	0.84	0.86	1.10	4.09	4.94	7.54
Almería	100	49.18	0.72	0.36	1.15	0.37	0.22	1.63	1.87	6.76
Araba/Álava	100	6.15	3.35	2.31	0.97	0.68	2.53	6.96	3.50	13.69
Asturias	100	3.62	1.36	22.44	1.07	1.09	3.60	10.07	1.82	4.67
Ávila	100	5.94	1.39	1.45	0.52	0.73	0.63	10.59	5.38	3.54
Badajoz	100	26.86	1.84	1.44	1.25	0.79	0.94	5.63	5.51	4.02
Balears, Illes	100	3.07	0.71	0.42	39.24	0.94	0.63	0.87	1.12	21.17
Barcelona	100	6.45	3.02	1.28	3.37	1.97	1.24	2.09	1.68	44.26
Bizkaia	100	4.84	2.66	4.50	1.68	1.50	2.26	5.16	1.98	15.70
Burgos	100	4.66	3.12	3.06	0.60	0.93	2.98	17.99	3.69	11.70
Cáceres	100	21.60	1.50	1.71	0.73	0.85	1.01	6.48	4.49	3.99
Cádiz	100	58.88	0.84	0.60	0.85	0.68	0.46	3.63	2.06	5.54
Cantabria	100	5.07	2.64	7.02	1.03	1.34	13.63	8.28	1.99	6.66
Castellón/Castelló	100	4.36	3.27	0.62	1.77	0.48	0.56	1.87	2.22	21.31
Ciudad Real	100	16.22	1.08	1.47	1.16	0.98	0.78	3.22	17.93	6.69
Córdoba	100	46.77	1.04	0.47	1.20	0.75	0.57	2.37	4.60	7.12
Coruña, A	100	5.46	0.69	4.36	1.47	1.29	1.74	4.89	1.64	5.98
Cuenca	100	7.47	2.25	0.93	1.06	0.51	0.58	4.38	11.50	9.36
Gipuzkoa	100	3.90	4.32	2.75	1.92	1.11	2.40	5.21	1.91	22.99
Girona	100	2.31	0.83	0.53	1.68	0.25	0.20	0.67	0.68	80.83
Granada	100	49.12	0.65	0.55	1.54	1.32	0.29	2.56	2.43	4.81
Guadalajara	100	6.11	3.25	1.15	0.58	0.68	0.75	4.98	12.47	10.19
Huelva	100	63.58	0.91	0.10	2.01	2.97	0.21	1.48	1.77	3.16
Huesca	100	1.59	24.84	0.74	1.06	1.23	0.34	3.17	1.20	24.84
Jaén	100	51.44	0.97	0.49	1.74	0.42	0.51	1.95	3.32	5.49
León	100	3.56	1.24	10.71	0.60	1.13	2.08	22.97	1.97	6.27
Lleida	100	2.29	2.18	0.45	1.16	0.56	0.63	1.36	0.76	70.42
Lugo	100	2.25	0.46	8.66	0.19	0.20	1.62	6.32	1.28	3.65
Madrid	100	15.41	2.71	2.90	2.21	3.53	2.26	5.14	3.86	12.00
Málaga	100	57.60	1.60	0.33	1.91	1.28	0.32	2.41	1.77	5.60
Murcia	100	13.82	0.90	0.97	1.24	0.62	0.62	2.43	4.06	8.64
Navarra	100	4.29	5.05	2.89	0.83	0.89	1.56	4.44	1.73	18.43
Ourense	100	1.50	0.48	3.54	0.46	0.31	0.76	4.80	1.83	3.70
Palencia	100	3.80	1.19	3.59	0.39	0.41	5.66	26.65	2.44	4.92
Palmas, Las	100	7.81	0.87	1.05	1.48	32.66	0.52	0.89	0.53	6.96
Pontevedra	100	2.35	0.82	4.23	1.19	0.93	0.78	6.69	1.50	5.43
Rioja, La	100	3.16	6.85	1.88	1.85	0.85	2.56	5.18	3.08	16.96
Salamanca	100	10.66	1.67	3.20	1.00	1.14	1.90	14.85	5.17	4.68
S. C. Tenerife	100	5.25	0.72	0.69	0.69	23.86	0.59	1.47	0.37	7.34
Segovia	100	6.33	2.23	3.37	1.11	0.68	1.18	12.30	5.64	7.47
Sevilla	100	41.51	1.48	0.93	1.13	1.72	0.78	2.51	2.51	8.57
Soria	100	2.23	5.60	1.56	0.51	0.70	0.98	15.56	4.09	10.87
Tarragona	100	2.11	3.57	0.39	1.58	0.30	0.38	1.13	0.68	70.20
Teruel	100	1.56	10.48	0.31	1.04	0.57	0.45	1.89	2.04	19.92
Toledo	100	13.56	2.46	1.25	0.75	0.67	0.99	4.44	13.92	6.13
Valencia/València	100	6.63	2.10	0.90	2.52	0.71	0.28	2.19	3.25	14.70
Valladolid	100	5.95	2.10	3.83	0.82	0.70	2.63	22.62	3.32	4.81
Zamora	100	6.16	1.37	5.35	1.05	0.71	2.22	19.10	2.76	3.55
Zaragoza	100	5.09	17.82	1.05	1.50	0.93	1.04	3.69	2.71	24.63
Ceuta	100	51.92	0.11	1.08	0.22	1.19	-	0.54	0.76	1.19
Melilla	100	49.90	0.56	0.22	1.18	1.12	0.34	1.40	1.57	4.86

6. Percentage distribution of Spanish travellers in each province by Autonomous City and Community of origin

Results by provinces

(Conclusion)

Provinces	Comunitat Valenciana	Extremadura	Galicia	Madrid, C. de	Murcia, Región de	Navarra, C. Foral de	País Vasco	Rioja, La	Ceuta	Melilla
TOTAL	9.81	1.81	5.41	20.16	2.49	1.53	5.34	0.79	0.30	0.22
Albacete	23.75	2.24	1.46	18.33	7.38	0.77	1.07	0.12	0.04	0.05
Alicante/Alacant	39.20	1.38	1.75	20.23	3.48	0.87	2.86	0.64	0.16	0.10
Almería	7.41	0.46	0.27	10.70	14.14	1.40	2.23	0.19	0.05	0.90
Araba/Álava	3.95	0.85	3.72	18.39	0.65	3.12	28.02	1.13	0.03	-
Asturias	1.80	0.94	10.09	23.61	0.38	1.72	10.98	0.66	0.06	0.00
Ávila	6.26	3.39	3.22	51.52	0.77	0.91	3.08	0.36	0.18	0.13
Badajoz	2.92	16.45	2.90	22.88	2.05	1.07	2.90	0.23	0.34	0.01
Balears, Illes	6.60	0.52	1.34	20.61	0.49	0.25	1.57	0.42	0.01	0.03
Barcelona	7.12	0.96	2.22	14.93	1.28	1.39	5.13	1.02	0.47	0.12
Bizkaia	2.93	0.72	2.95	18.42	0.45	4.15	28.51	1.30	0.26	0.03
Burgos	3.72	0.98	6.21	25.27	0.62	2.07	10.69	1.63	0.08	-
Cáceres	5.49	11.58	2.66	31.49	1.11	0.99	3.19	0.50	0.60	0.03
Cádiz	2.43	2.08	2.19	13.49	1.63	0.74	1.62	0.40	1.59	0.26
Cantabria	3.12	1.05	4.90	19.40	0.75	2.95	17.71	2.09	0.20	0.18
Castellón/Castelló	44.48	0.43	1.69	11.55	1.81	0.67	2.22	0.64	0.02	0.01
Ciudad Real	8.75	3.21	2.48	28.02	2.50	0.94	3.41	0.65	0.28	0.22
Córdoba	6.25	2.18	0.93	20.35	2.19	0.53	1.88	0.47	0.27	0.08
Coruña, A	2.13	0.62	46.01	17.28	0.71	1.26	3.26	1.13	0.06	0.01
Cuenca	21.51	0.90	1.37	31.92	2.72	1.13	1.52	0.60	0.13	0.14
Gipuzkoa	5.25	0.60	3.38	16.30	0.53	3.63	22.24	1.46	0.08	0.01
Girona	3.00	0.20	1.03	5.75	0.31	0.63	0.69	0.41	-	-
Granada	11.69	1.09	1.10	14.81	5.53	0.56	1.18	0.22	0.39	0.17
Guadalajara	7.45	1.68	1.35	45.51	0.67	0.95	1.89	0.34	-	-
Huelva	4.25	2.20	0.56	13.72	1.20	0.24	1.40	0.00	0.23	-
Huesca	8.25	0.35	0.98	17.25	0.66	4.57	7.25	1.49	-	0.18
Jaén	7.92	0.86	0.53	17.58	4.37	0.44	1.37	0.37	0.18	0.06
León	2.38	0.70	15.39	19.87	0.69	1.44	7.52	1.05	0.43	-
Lleida	4.73	0.31	0.82	9.15	0.39	0.55	3.24	0.19	0.15	0.66
Lugo	1.22	1.28	55.60	12.63	0.12	0.59	3.35	0.59	-	-
Madrid	9.49	2.86	4.37	21.07	3.09	1.91	5.36	1.03	0.33	0.46
Málaga	4.36	0.74	4.06	11.82	1.52	0.34	2.38	0.21	0.71	1.04
Murcia	19.28	1.09	1.09	16.29	26.73	0.64	1.13	0.27	0.12	0.07
Navarra	5.21	0.80	3.33	21.14	0.63	11.21	16.00	1.46	0.06	0.03
Ourense	1.40	5.46	61.55	10.95	0.18	1.00	1.90	0.20	-	-
Palencia	3.22	1.51	6.17	20.10	2.55	3.93	12.22	1.20	-	0.04
Palmas, Las	1.83	0.31	2.42	36.14	0.26	0.30	5.87	0.06	0.02	0.00
Pontevedra	2.24	0.82	48.90	18.36	0.69	1.28	2.07	1.70	0.01	0.04
Rioja, La	6.39	0.51	3.42	19.79	0.82	3.64	15.55	7.32	0.09	0.09
Salamanca	4.34	4.21	5.63	31.20	0.97	1.70	6.69	0.95	0.05	-
S. C. Tenerife	1.06	0.29	1.90	49.71	0.16	0.69	4.19	0.16	0.78	0.08
Segovia	6.99	1.41	4.95	35.40	1.92	1.93	6.35	0.69	0.04	0.00
Sevilla	4.52	3.43	2.59	22.01	1.78	1.14	2.34	0.28	0.63	0.14
Soria	2.90	0.61	1.74	36.04	0.52	3.18	11.56	1.27	0.08	-
Tarragona	8.04	0.18	1.02	6.53	1.03	0.69	1.77	0.27	-	0.12
Teruel	41.17	0.40	0.61	11.94	1.74	2.42	2.93	0.50	0.04	0.00
Toledo	13.94	2.50	3.07	26.71	2.88	1.33	4.61	0.63	0.12	0.02
Valencia/València	36.45	0.72	1.44	19.82	4.44	0.59	2.39	0.49	0.11	0.26
Valladolid	4.36	1.98	7.36	30.22	0.84	2.09	5.47	0.63	0.18	0.09
Zamora	4.13	1.96	16.18	26.01	1.25	1.24	5.36	1.38	0.07	0.15
Zaragoza	9.54	0.65	2.41	16.88	0.94	3.12	6.38	1.31	0.08	0.25
Ceuta	1.52	1.41	0.43	24.14	0.76	0.11	0.22	0.22	13.88	0.32
Melilla	6.11	1.24	1.22	15.48	1.39	-	0.17	0.50	0.51	12.23

7. Percentage distribution of overnight stays in each province by Autonomous City and Community of origin

Results by provinces

(Continued)

Provinces	Total	Andalucía	Aragón	Asturias, P. de	Balears, Illes	Canarias	Cantabria	Castilla y León	Castilla-La Mancha	Cataluña
TOTAL	100	15.44	2.66	2.47	2.20	3.63	1.33	4.62	3.18	15.64
Albacete	100	8.28	1.36	0.75	0.43	0.48	0.51	3.50	23.99	7.41
Alicante/Alacant	100	8.06	2.54	4.11	0.99	0.89	1.85	6.38	5.33	8.05
Almería	100	38.69	0.68	4.92	1.98	0.18	0.14	2.91	3.02	12.08
Araba/Álava	100	7.19	2.86	1.96	1.31	0.95	2.04	7.89	4.31	15.51
Asturias	100	4.69	1.96	16.74	1.44	1.79	2.87	10.19	2.06	5.24
Ávila	100	7.36	1.50	1.02	0.57	0.79	0.57	10.40	5.48	3.76
Badajoz	100	28.76	2.28	1.19	1.19	0.67	0.75	5.93	6.43	4.71
Balears, Illes	100	4.15	0.57	0.62	42.10	0.92	0.44	0.98	1.02	20.15
Barcelona	100	8.13	2.84	1.35	3.32	2.21	1.15	2.27	1.83	40.44
Bizkaia	100	5.95	2.91	4.53	1.87	1.83	2.48	4.79	2.06	17.76
Burgos	100	6.81	2.76	2.68	1.84	0.89	2.09	18.09	3.19	12.97
Cáceres	100	22.83	1.40	1.47	0.99	0.82	0.98	6.21	4.75	4.77
Cádiz	100	53.10	1.05	0.71	0.90	0.66	0.55	3.68	3.22	6.78
Cantabria	100	5.48	2.79	6.19	1.28	1.59	11.87	9.71	2.14	6.59
Castellón/Castelló	100	6.01	3.55	1.06	3.38	2.30	0.35	1.87	2.05	26.66
Ciudad Real	100	16.46	0.82	1.68	1.27	1.50	0.95	2.98	14.62	6.41
Córdoba	100	43.44	1.40	0.54	1.32	1.20	0.54	2.33	4.17	8.27
Coruña, A	100	5.93	0.76	4.13	1.87	1.20	1.40	3.87	1.98	6.49
Cuenca	100	7.21	2.15	0.91	0.92	0.41	0.54	3.93	11.68	9.73
Gipuzkoa	100	4.71	4.30	2.74	2.01	1.55	1.89	4.89	2.33	24.50
Girona	100	3.35	1.05	2.53	1.79	0.17	0.19	0.89	0.49	74.15
Granada	100	43.88	0.56	0.84	2.90	1.92	0.32	3.25	2.65	4.98
Guadalajara	100	7.67	2.69	1.51	0.62	0.91	0.58	5.55	14.68	10.47
Huelva	100	49.38	0.77	0.12	2.23	7.43	0.12	1.55	1.88	7.54
Huesca	100	1.55	20.47	0.73	1.24	2.26	0.44	2.64	1.47	24.45
Jaén	100	51.24	0.75	0.41	1.68	0.75	0.80	2.07	3.36	7.65
León	100	3.66	1.12	10.76	0.42	1.10	1.56	28.40	2.00	6.56
Lleida	100	1.71	1.85	0.67	1.42	0.70	0.59	1.49	0.78	62.94
Lugo	100	1.90	0.44	7.67	0.10	0.49	1.49	5.40	1.51	2.96
Madrid	100	17.03	2.71	2.94	2.42	4.28	2.38	4.89	3.32	12.97
Málaga	100	42.20	2.72	0.30	2.70	1.19	0.29	2.89	5.16	6.28
Murcia	100	14.82	0.87	1.37	1.18	0.88	0.80	3.20	4.07	7.93
Navarra	100	4.44	6.81	2.95	0.79	1.03	1.25	4.24	1.75	18.21
Ourense	100	1.63	0.39	4.62	0.39	0.24	0.77	6.32	1.53	3.98
Palencia	100	4.80	0.91	3.20	0.57	0.28	4.73	26.99	2.47	5.74
Palmas, Las	100	9.26	0.81	1.45	1.02	25.06	0.69	0.88	0.45	7.52
Pontevedra	100	2.38	0.69	4.72	1.34	1.02	1.04	5.84	2.74	5.16
Rioja, La	100	3.17	6.65	1.64	1.62	1.00	2.24	4.93	4.29	16.00
Salamanca	100	13.83	1.93	3.35	1.03	1.22	1.61	13.40	4.78	5.42
S. C. Tenerife	100	4.64	1.42	1.13	0.69	14.25	0.74	1.44	0.28	8.01
Segovia	100	6.91	2.27	2.64	1.26	0.72	1.15	14.67	5.68	6.95
Sevilla	100	35.58	1.83	1.02	1.59	1.93	0.86	2.94	2.37	9.68
Soria	100	2.32	6.80	1.89	0.49	0.78	0.85	17.09	3.98	12.32
Tarragona	100	2.30	3.42	0.46	1.99	0.30	0.40	1.20	0.95	67.40
Teruel	100	2.59	16.07	0.25	1.01	0.36	0.30	1.72	2.01	20.53
Toledo	100	14.64	2.58	1.15	0.70	0.77	0.81	4.01	12.26	6.72
Valencia/València	100	7.77	1.87	1.28	3.34	1.62	0.30	3.13	3.28	14.70
Valladolid	100	6.23	2.17	3.58	1.13	0.84	2.11	22.02	3.38	5.63
Zamora	100	7.73	1.15	5.01	1.09	0.50	3.02	18.32	2.74	3.58
Zaragoza	100	6.59	16.33	0.97	1.54	1.22	1.23	3.47	3.43	23.44
Ceuta	100	51.92	0.10	1.35	0.52	1.30	-	0.90	0.73	0.88
Melilla	100	57.31	0.48	0.11	0.36	0.56	0.46	1.12	1.36	3.98

7. Percentage distribution of overnight stays in each province by Autonomous City and Community of origin

Results by provinces

(Conclusion)

Provinces	Comunitat Valenciana	Extremadura	Galicia	Madrid, C. de	Murcia, Región de	Navarra, C. Foral de	País Vasco	Rioja, La	Ceuta	Melilla
TOTAL	9.53	1.54	5.66	21.82	2.20	1.43	5.42	0.75	0.26	0.20
Albacete	22.84	1.62	1.15	18.32	7.33	0.85	1.00	0.11	0.06	0.02
Alicante/Alacant	27.63	0.87	2.96	21.37	2.28	1.34	4.58	0.65	0.05	0.05
Almería	7.00	0.51	2.08	8.92	9.25	3.21	3.80	0.11	0.04	0.48
Araba/Álava	4.15	0.85	3.82	18.34	0.69	2.22	25.24	0.65	0.02	-
Asturias	2.21	1.01	10.75	24.89	0.52	1.75	11.25	0.55	0.07	0.00
Ávila	6.79	3.19	3.74	49.69	0.75	0.93	2.99	0.23	0.12	0.12
Badajoz	2.99	13.68	2.64	21.59	2.58	0.98	3.00	0.27	0.34	0.01
Balears, Illes	6.57	0.54	1.68	16.85	0.73	0.27	2.05	0.32	0.02	0.03
Barcelona	6.74	1.62	2.40	15.76	1.30	1.33	5.63	1.04	0.50	0.15
Bizkaia	3.62	0.70	3.59	19.01	0.62	3.40	23.60	1.03	0.24	0.02
Burgos	5.74	0.72	7.06	21.92	0.51	1.86	9.16	1.67	0.05	-
Cáceres	7.08	9.89	2.95	28.96	1.43	0.91	3.26	0.69	0.54	0.07
Cádiz	2.61	2.37	1.99	15.36	2.38	1.20	1.78	0.36	1.16	0.13
Cantabria	3.77	1.16	4.69	21.86	0.82	2.22	15.24	2.29	0.20	0.10
Castellón/Castelló	32.60	0.22	3.73	10.64	1.19	0.78	3.18	0.41	0.01	0.00
Ciudad Real	8.96	4.48	3.47	28.23	2.67	0.90	3.68	0.51	0.20	0.21
Córdoba	6.69	1.89	0.93	21.65	2.32	0.65	1.92	0.39	0.28	0.09
Coruña, A	2.17	0.50	47.50	16.53	0.61	1.06	2.93	1.00	0.06	0.01
Cuenca	21.50	0.72	1.16	32.23	2.71	1.35	1.28	1.42	0.09	0.09
Guipúzcoa	5.85	0.63	2.91	16.98	0.66	2.75	20.08	1.10	0.13	0.01
Girona	2.96	0.18	2.25	7.93	0.33	0.52	0.66	0.57	-	-
Granada	12.20	1.15	1.29	17.18	4.41	0.51	1.25	0.25	0.32	0.14
Guadalajara	8.29	2.50	1.54	39.15	1.16	0.98	1.48	0.20	-	-
Huelva	4.83	1.96	0.75	17.76	0.88	0.18	2.03	0.40	0.18	-
Huesca	9.96	0.37	1.37	20.82	0.75	3.38	6.86	1.12	-	0.11
Jaén	7.99	0.86	0.61	15.33	4.50	0.35	1.20	0.32	0.11	0.04
León	2.19	0.59	12.66	18.01	0.58	1.22	7.94	0.97	0.25	-
Lleida	5.84	0.26	1.03	13.90	0.54	0.56	4.05	0.12	0.10	1.47
Lugo	1.05	1.12	53.95	17.83	0.43	0.89	2.40	0.37	-	-
Madrid	9.21	2.83	4.69	17.77	3.19	1.88	5.65	1.00	0.35	0.49
Málaga	9.80	0.53	9.08	10.11	1.14	0.50	3.64	0.24	0.54	0.70
Murcia	17.99	1.01	1.63	18.80	23.09	0.60	1.41	0.24	0.09	0.04
Navarra	5.29	0.61	2.79	22.23	0.60	10.07	15.52	1.38	0.03	0.01
Ourense	1.47	3.38	56.44	15.63	0.20	0.98	1.87	0.17	-	-
Palencia	3.53	1.54	6.62	19.59	3.78	3.39	11.09	0.73	-	0.03
Palmas, Las	2.00	0.41	2.97	40.47	0.26	0.53	6.01	0.10	0.01	0.09
Pontevedra	1.75	0.73	47.38	17.16	0.60	1.01	2.94	3.48	0.00	0.02
Rioja, La	7.27	0.56	3.70	20.38	0.90	2.72	14.56	8.26	0.07	0.05
Salamanca	5.37	4.24	4.87	27.95	0.88	1.60	7.75	0.75	0.04	-
S. C. Tenerife	0.83	0.26	2.53	57.08	0.15	0.82	4.89	0.17	0.64	0.04
Segovia	8.05	1.62	4.10	31.42	2.22	2.18	7.48	0.64	0.03	0.00
Sevilla	4.99	2.94	3.63	23.32	1.85	1.46	2.96	0.35	0.53	0.17
Soria	2.46	0.47	2.42	31.62	0.33	3.09	12.09	0.98	0.04	-
Tarragona	8.08	0.23	0.91	7.11	1.04	1.34	2.38	0.38	-	0.09
Teruel	35.76	0.28	0.61	11.74	1.44	2.18	2.75	0.36	0.02	0.02
Toledo	15.94	3.25	3.21	22.97	3.09	1.65	5.44	0.62	0.12	0.05
Valencia/València	28.44	0.91	2.19	22.52	3.39	0.63	3.80	0.55	0.07	0.21
Valladolid	5.01	1.71	7.44	30.12	0.81	1.77	5.27	0.56	0.17	0.05
Zamora	5.59	2.15	13.33	25.45	1.28	1.18	6.06	1.52	0.22	0.10
Zaragoza	9.37	0.71	2.59	17.66	1.12	2.58	6.37	1.09	0.07	0.22
Ceuta	8.66	0.78	0.47	21.57	0.67	0.26	0.41	0.31	8.86	0.31
Melilla	4.40	0.69	1.02	17.42	2.57	-	0.10	0.36	0.20	7.49

8. Travellers, overnight stays and average stay by country of residence

Results by countries

Countries	Number of travellers		Overnight stays	
	Total	%	Total	%
TOTAL	4,601,737	100.00	13,043,204	100.00
Residents in Spain	2,892,681	62.86	6,063,682	46.49
Residents abroad	1,709,056	37.14	6,979,523	53.51
Total Residents abroad	1,709,056	100.00	6,979,523	100.00
Total Residents in U.E. (without Spain)	1,189,963	69.63	5,695,644	81.61
- Germany	236,208	13.82	1,785,727	25.59
- Austria	14,953	0.87	66,056	0.95
- Belgium	39,434	2.31	233,652	3.35
- Denmark	22,951	1.34	132,252	1.89
- Finland	22,090	1.29	131,715	1.89
- France	188,184	11.01	451,104	6.46
- Greece	7,400	0.43	19,138	0.27
- Ireland	20,416	1.19	86,174	1.23
- Italy	142,103	8.31	370,926	5.31
- Luxembourg	3,823	0.22	20,799	0.30
- Netherlands	56,108	3.28	251,769	3.61
- Poland	16,184	0.95	80,961	1.16
- Portugal	62,471	3.66	120,908	1.73
- United Kingdom	267,857	15.67	1,492,326	21.38
- Czech Republic	5,787	0.34	17,396	0.25
- Sweden	51,891	3.04	337,563	4.84
- Rest of UE*	32,103	1.88	97,179	1.39
Norway	21,456	1.26	142,927	2.05
Russia	32,088	1.88	108,384	1.55
Switzerland	24,586	1.44	88,137	1.26
Rest of Europe	44,057	2.58	104,725	1.50
Japan	47,528	2.78	77,832	1.12
United States of America	79,704	4.66	175,740	2.52
Rest of America	122,575	7.17	277,799	3.98
African's countries	27,930	1.63	58,061	0.83
Rest of the world	119,169	6.97	250,275	3.59

*Countries included in the Rest of UE: Bulgaria, Cyprus, Slovakia, Slovenia, Estonia, Hungary, Latvia, Lithuania, Malta and Romania

Hotel Price Index (HPI). 2008 Base

December 2011

Provisional data

General Autonomous Cities and Communities and national indices

	Index	Interannual variation rate
TOTAL	93.2	-1.3
Andalucía	94.5	-3.1
Aragón	81.7	-6.7
Asturias, Principado de	91.4	-1.6
Balears, Illes	94.7	-7.8
Canarias	97.0	3.0
Cantabria	93.0	-2.8
Castilla y León	92.5	-3.4
Castilla - La Mancha	90.4	-5.1
Cataluña	91.1	-1.8
Comunitat Valenciana	95.1	-1.8
Extremadura	90.6	-3.1
Galicia	95.0	-5.8
Madrid, Comunidad de	87.1	-3.7
Murcia, Región de	86.5	-4.0
Navarra, Comunidad Foral de	97.8	3.3
País Vasco	91.8	-2.7
Rioja, La	92.2	-0.7
Ceuta	98.1	3.5
Melilla	99.5	6.0

National General Index and breakdown by categories

	Index	Interannual variation rate
TOTAL	93.2	-1.3
HOTELS: Gold stars		
Five	91.3	-2.0
Fourth	93.1	-0.5
Three	93.1	-1.8
Two	93.2	-3.4
One	94.4	-1.2
HOSTALS: Silver stars		
Three and two	94.7	-3.0
One	102.4	0.0

Indicators on the Profitability of the Hotel Sector

December 2011

Provisional data

ADR and RevPAR for Autonomous Cities and Communities and national indices

	ADR (in euros)	Variation Rate variation	RevPar (in euros)	Variation Rate variation
TOTAL	69.3	0.1	28.3	0.0
Andalucía	59.7	-3.1	19.6	-1.1
Aragón	57.1	-9.4	12.4	-26.0
Asturias, Principado de	55.5	-2.1	12.2	-5.2
Balears, Illes	62.1	-3.9	18.9	-28.3
Canarias	77.1	4.0	54.9	12.5
Cantabria	64.0	1.4	14.7	-7.7
Castilla y León	55.9	-2.8	14.0	-5.7
Castilla - La Mancha	58.0	-6.2	12.9	-7.6
Cataluña	81.0	0.4	29.5	-7.8
Comunitat Valenciana	51.8	-3.1	20.4	2.3
Extremadura	56.9	-0.6	14.1	-1.0
Galicia	52.3	-4.9	10.7	-23.8
Madrid, Comunidad de	77.3	-2.5	40.6	-4.7
Murcia, Región de	58.9	-3.1	16.5	-10.5
Navarra, Comunidad Foral de	63.8	0.6	16.6	-5.5
País Vasco	64.7	-2.8	27.1	-1.6
Rioja, La	63.6	8.2	21.7	10.7
Ceuta	70.9	9.9	36.5	45.8
Melilla	62.3	-4.2	29.9	-13.9

National ADR and RevPar and breakdown by categories

	ADR (in euros)	Variation Rate interannual	RevPar (in euros)	Variation Rate interannual
TOTAL	69.3	0.1	28.3	0.0
HOTELS: Gold stars				
Five	140.3	1.0	58.4	-3.2
Four	75.7	0.1	37.3	2.2
Three	54.9	-1.2	24.4	-0.6
Two	49.8	-0.9	15.3	-8.1
One	47.2	-1.3	11.0	-10.4
GUESTHOUSES: Silver stars				
Three and two	43.4	-0.9	9.6	-7.8
One	36.1	-1.0	8.5	0.0

Due to the updating in the establishments directory carried out in Navarra in January 2011 and in Extremadura in March 2011, the data to be published for Navarra, Extremadura and the national total from those dates are not directly comparable with the data published last year, therefore data link coefficients have been calculated to allow the comparison of data between different years. These coefficients are available in INE website (www.ine.es)

Tourist Accommodation Occupancy Survey (Hotels and similar establishments)

Year 2011

Provisional data

1. Travellers, overnight stays and average stay by categories of establishment

Category	Number of travellers			Number of overnight stays			Average stay
	Total	Residents in Spain	Residents abroad	Total	Residents in Spain	Residents abroad	
TOTAL	85,394,352	45,709,061	39,685,291	286,615,670	111,140,732	175,474,938	3.36
HOTELS: Golden stars							
Five	4,907,604	1,979,507	2,928,097	15,552,178	4,453,398	11,098,780	3.17
Four	37,324,066	19,255,136	18,068,930	129,497,540	46,288,454	83,209,086	3.47
Three	26,084,821	13,373,955	12,710,866	98,292,525	35,460,987	62,831,538	3.77
Two	6,692,816	4,277,436	2,415,380	17,889,546	9,843,357	8,046,189	2.67
One	2,486,533	1,607,304	879,229	6,104,748	3,346,021	2,758,727	2.46
INNS: Silver stars							
Two and three	4,341,336	2,944,565	1,396,771	10,390,632	6,196,080	4,194,552	2.39
One	3,557,178	2,271,156	1,286,022	8,888,503	5,552,438	3,336,065	2.50
Annual rate	3.80	-1.42	10.57	6.38	-2.17	12.67	2.48

2. Open establishments, capacity, occupancy and employed personnel by categories of establishment

Category	Number of open estim. establishm. according to survey *	Number of estimated bedplaces * according to survey	Level of occupancy Per bedplaces **	Level of occupancy Per bedplaces at weekend **	Employed personnel*
TOTAL	14,976	1,424,711	53.55	58.42	192,880
HOTELS: Golden stars					
Five	251	81,050	51.80	57.48	23,289
Four	1,929	571,021	60.37	65.68	87,330
Three	2,513	425,682	60.90	65.08	51,949
Two	1,888	117,424	41.03	47.38	11,064
One	1,190	51,046	32.25	37.21	4,530
INNS: Silver stars					
Two and three	3,078	94,259	29.88	34.29	8,103
One	4,128	84,231	28.64	31.62	6,614
Interannual rate	0.33	1.02	4.94	3.65	1.36

* Annual average.

** Weighted average per places.

Due to the updating in the establishments directory carried out in the Canary Islands, Comunidad Foral de Navarra y Extremadura, data (for the annual 2011 in those CCAA and the national total) are not directly comparable with the annual data published in 2010.

3. Travellers, overnight stays, occupancy, establishments, capacity, average stay and employed personnel

Results by areas and tourist sites

	Travellers		Overnight stays		Occupancy		Number of open establishments according to survey *	Number of estimated bedplaces according to survey	Average stay	Employed personnel*
	Residents in Spain	Residents abroad	Residents in Spain	Residents abroad	Per bedplaces **	Per bedplace: at week-end **				
Tourist areas with a greater number of overnight stays per month										
Isla de Mallorca	875,662	5,539,731	3,410,383	38,266,390	74.90	74.83	511	143,669	6.50	19,686
Isla de Tenerife	978,838	2,153,195	4,493,987	17,832,823	71.87	73.96	202	83,181	7.13	14,808
Palma-Calvià	588,681	2,493,333	2,151,205	15,154,400	73.28	74.44	241	61,595	5.62	8,981
Barcelona	1,734,406	5,427,209	3,310,803	13,528,054	65.22	70.00	531	69,927	2.35	11,729
Isla de Gran Canaria	597,232	1,555,282	2,343,773	12,913,128	72.70	74.88	135	56,463	7.09	9,900
Costa del Sol	1,821,185	2,076,389	5,507,889	9,699,291	56.83	62.79	364	71,888	3.90	10,096
Costa Blanca	2,007,861	1,269,010	8,201,997	6,648,978	62.89	70.50	352	62,397	4.53	7,933
Fuerteventura	168,639	1,128,953	795,548	10,380,269	69.49	70.85	69	43,136	8.61	6,640
Costa Brava	1,193,995	1,840,779	3,012,697	7,334,779	54.64	60.39	440	49,264	3.41	5,468
Costa Daurada	1,185,108	958,256	3,674,329	5,383,467	62.35	66.39	191	36,770	4.23	3,868

Tourist sites with a greater number of overnight stays per month

Madrid	4,162,042	4,166,911	7,165,939	9,200,988	56.24	64.31	861	79,093	1.97	12,171
Barcelona	1,627,805	5,283,251	3,005,351	13,171,284	65.44	70.19	505	66,931	2.34	11,407
San Bartolomé de Tirajana	308,683	1,069,354	1,486,101	9,392,391	75.84	77.56	60	38,492	7.89	7,344
Benidorm	992,343	758,802	5,493,983	4,939,716	75.15	81.46	119	36,698	5.96	4,904
Adeje	233,991	998,814	1,175,339	8,435,319	76.89	77.92	53	33,313	7.80	6,364
Calvià	156,055	1,103,328	909,783	7,822,082	75.26	75.00	99	29,950	6.93	4,100
Palma de Mallorca	459,168	1,406,578	1,179,175	6,918,063	71.36	74.29	134	30,029	4.34	4,660
Pájara	71,428	744,185	415,452	6,985,464	71.76	71.64	38	27,659	9.07	4,494
Salou	419,367	621,972	1,706,220	3,791,745	78.05	80.46	37	17,655	5.28	1,778
Arona	103,343	546,956	577,550	4,640,808	77.68	77.95	39	18,065	8.02	2,846

* Annual average.

** Weighted average per places.

4. Travellers, overnight stays and average stay

Results by Autonomous Communities and provinces

Provinces	Number of travellers			Overnight stays			Average stay
	Total	Residents in Spain	Residents abroad	Total	Residents in Spain	Residents abroad	
TOTAL	85,394,352	45,709,061	39,685,291	286,615,670	111,140,732	175,474,938	3.36
Andalucía	14,838,712	8,958,253	5,880,459	42,230,706	22,850,506	19,380,200	2.85
Almería	1,112,418	949,725	162,693	4,357,352	3,524,489	832,863	3.92
Cádiz	2,149,951	1,442,965	706,986	6,422,643	3,718,504	2,704,139	2.99
Córdoba	979,281	608,526	370,755	1,593,723	1,035,973	557,750	1.63
Granada	2,278,115	1,341,613	936,502	4,844,372	2,969,160	1,875,212	2.13
Huelva	1,059,284	870,300	188,984	3,792,397	2,815,595	976,802	3.58
Jaén	483,413	416,025	67,388	814,758	715,284	99,474	1.69
Málaga	4,312,568	2,058,154	2,254,414	15,875,238	5,875,136	10,000,102	3.68
Sevilla	2,463,681	1,270,948	1,192,733	4,530,228	2,196,368	2,333,860	1.84
Aragón	2,141,650	1,774,336	367,314	4,226,944	3,557,534	669,410	1.97
Huesca	659,467	556,255	103,212	1,572,476	1,347,429	225,047	2.38
Teruel	335,172	305,487	29,685	613,445	560,430	53,015	1.83
Zaragoza	1,147,012	912,594	234,418	2,041,026	1,649,675	391,351	1.78
Asturias (Principado de)	1,456,184	1,270,097	186,087	3,044,508	2,692,645	351,863	2.09
Balears (Illes)	8,429,609	1,417,618	7,011,991	54,093,931	5,978,699	48,115,232	6.42
Canarias	7,957,968	2,224,790	5,733,178	58,337,052	9,992,036	48,345,016	7.33
Palmas (Las)	4,605,719	1,132,431	3,473,288	34,951,859	5,150,017	29,801,842	7.59
Santa Cruz de Tenerife	3,352,247	1,092,358	2,259,889	23,385,190	4,842,018	18,543,172	6.98
Cantabria	1,050,645	860,066	190,579	2,359,511	1,973,466	386,045	2.25
Castilla y León	4,216,571	3,370,853	845,718	7,114,476	5,809,263	1,305,213	1.69
Ávila	280,942	235,631	45,311	483,063	401,480	81,583	1.72
Burgos	724,738	504,153	220,585	1,152,536	859,661	292,875	1.59
León	704,609	584,704	119,905	1,167,715	982,666	185,049	1.66
Palencia	202,214	162,764	39,450	349,266	294,203	55,063	1.73
Salamanca	888,419	666,913	221,506	1,597,989	1,254,619	343,370	1.80
Segovia	390,959	324,688	66,271	646,887	532,159	114,728	1.65
Soria	188,320	174,787	13,533	344,577	321,091	23,486	1.83
Valladolid	605,967	514,455	91,512	1,014,514	848,550	165,964	1.67
Zamora	230,403	202,760	27,643	357,922	314,831	43,091	1.55
Castilla-La Mancha	1,913,602	1,587,000	326,602	3,365,260	2,832,774	532,486	1.76
Albacete	325,025	300,223	24,802	723,070	676,337	46,733	2.22
Ciudad Real	367,928	325,921	42,007	670,752	597,740	73,012	1.82
Cuenca	309,729	266,413	43,316	504,613	440,789	63,824	1.63
Guadalajara	236,171	210,163	26,008	397,311	352,949	44,362	1.68
Toledo	674,749	484,280	190,469	1,069,507	764,954	304,553	1.59
Cataluña	16,517,144	6,548,249	9,968,895	48,029,385	15,155,778	32,873,607	2.91
Barcelona	10,041,742	3,068,878	6,972,864	25,860,494	6,147,873	19,712,621	2.58
Girona	3,286,889	1,414,396	1,872,493	10,818,979	3,416,756	7,402,223	3.29
Lleida	797,612	682,704	114,908	1,696,406	1,446,392	250,014	2.13
Tarragona	2,390,903	1,382,276	1,008,627	9,653,505	4,144,755	5,508,750	4.04
Comunitat Valenciana	6,950,008	4,662,447	2,287,561	24,429,137	15,259,980	9,169,157	3.51
Alicante/Alacant	3,439,584	2,141,112	1,298,472	15,171,588	8,446,882	6,724,706	4.41
Castellón/Castelló	952,780	794,680	158,100	3,364,639	2,862,734	501,905	3.53
Valencia/València	2,557,642	1,726,653	830,989	5,892,916	3,950,364	1,942,552	2.30
Extremadura	1,270,045	1,072,005	198,040	2,244,658	1,945,503	299,155	1.77
Badajoz	665,125	548,117	117,008	1,128,942	957,074	171,868	1.70
Cáceres	604,917	523,888	81,029	1,115,714	988,427	127,287	1.84
Galicia	3,339,750	2,621,080	718,670	7,139,306	5,854,157	1,285,149	2.14
Coruña (A)	1,468,023	1,076,460	391,563	2,976,087	2,277,144	698,943	2.03
Lugo	527,063	412,288	114,775	857,950	710,952	146,998	1.63
Ourense	294,664	269,479	25,185	538,779	487,435	51,344	1.83
Pontevedra	1,049,993	862,848	187,145	2,766,487	2,378,626	387,861	2.63
Madrid (Comunidad de)	10,400,994	5,725,081	4,675,913	19,935,523	9,722,827	10,212,696	1.92
Murcia (Región de)	1,020,074	838,832	181,242	2,678,453	2,185,715	492,738	2.63
Navarra (Comunidad Foral de)	816,103	629,504	186,599	1,540,941	1,225,857	315,084	1.89
País Vasco	2,409,248	1,602,699	806,549	4,610,628	3,057,476	1,553,152	1.91
Araba/Álava	365,835	276,876	88,959	667,160	514,612	152,548	1.82
Bizkaia	1,110,904	740,381	370,523	2,128,283	1,394,338	733,945	1.92
Gipuzkoa	932,505	585,441	347,064	1,815,186	1,148,525	666,661	1.95
Rioja (La)	535,268	447,282	87,986	936,680	801,296	135,384	1.75
Ceuta	80,803	59,431	21,372	163,318	128,043	35,275	2.02
Melilla	49,982	39,440	10,542	135,248	117,175	18,073	2.71

5. Establishment, capacity, occupancy and employed personnel

Results by Autonomous Communities and provinces

Provinces	Number of open estimated establishm. according to survey*	Number of estimated bedplaces according to survey*	Occupancy Per bedplaces **	Per bedplaces at weekend *	Employed personnel*
TOTAL	14,976	1,424,711	53.55	58.42	192,880
Andalucía	2,392	244,293	46.48	53.02	31,194
Almería	178	29,251	40.05	43.15	2,506
Cádiz	414	39,446	43.69	50.43	5,233
Córdoba	196	10,576	40.82	50.37	1,343
Granada	426	29,879	44.02	54.38	3,481
Huelva	150	20,911	47.42	53.61	2,587
Jaén	181	8,994	24.72	31.74	1,173
Málaga	531	78,999	54.04	60.08	11,318
Sevilla	317	26,236	46.84	53.03	3,554
Aragón	809	38,760	29.52	38.16	4,312
Huesca	310	14,354	29.43	39.14	1,476
Teruel	214	6,882	24.03	35.81	799
Zaragoza	286	17,524	31.76	38.28	2,037
Asturias (Principado de)	589	24,270	33.94	40.72	2,677
Balears (Illes)	713	187,710	74.50	74.52	25,250
Canarias	522	221,847	70.59	72.10	37,312
Palmas (Las)	263	132,548	70.86	71.92	21,575
Santa Cruz de Tenerife	259	89,298	70.18	72.37	15,736
Cantabria	360	16,616	38.37	43.59	2,297
Castilla y León	1,380	60,013	32.23	40.57	7,731
Ávila	101	4,867	26.97	40.51	621
Burgos	210	9,001	34.79	39.50	998
León	283	10,784	29.50	36.59	1,212
Palencia	94	3,344	28.42	30.20	358
Salamanca	214	10,990	39.42	50.87	1,478
Segovia	137	5,822	30.15	41.65	785
Soria	114	3,758	24.97	31.67	487
Valladolid	141	8,057	34.36	42.32	1,211
Zamora	87	3,390	28.68	36.84	581
Castilla-La Mancha	837	34,591	26.52	33.51	3,824
Albacete	169	7,052	28.04	32.60	832
Ciudad Real	187	7,557	24.24	29.06	846
Cuenca	163	5,678	24.23	32.50	603
Guadalajara	133	4,761	22.77	29.60	416
Toledo	186	9,542	30.43	40.27	1,126
Cataluña	2,096	226,097	56.03	60.94	29,171
Barcelona	958	115,155	60.27	64.21	17,052
Girona	559	53,953	52.25	58.68	6,106
Lleida	317	16,122	28.57	36.82	1,677
Tarragona	263	40,868	59.86	64.26	4,337
Comunitat Valenciana	999	120,301	53.83	61.17	14,604
Alicante/Alacant	448	66,579	60.30	67.72	8,313
Castellón/Castelló	186	17,850	49.07	55.52	2,089
Valencia/València	365	35,872	44.19	51.81	4,202
Extremadura	427	19,427	31.44	38.07	2,638
Badajoz	199	9,556	32.17	37.77	1,254
Cáceres	228	9,871	30.74	38.36	1,385
Galicia	1,531	62,485	30.97	35.27	7,360
Coruña (A)	614	24,910	32.38	36.20	2,654
Lugo	295	9,152	25.50	27.91	1,024
Ourense	191	6,217	23.58	28.01	722
Pontevedra	432	22,206	33.71	39.30	2,961
Madrid (Comunidad de)	1,165	104,076	52.10	59.80	15,044
Murcia (Región de)	185	17,726	40.57	46.66	2,430
Navarra (Comunidad Foral de)	302	12,274	34.16	38.56	1,620
País Vasco	503	26,417	47.24	55.90	4,233
Araba/Álava	77	4,331	41.53	50.67	625
Bizkaia	202	12,624	45.82	53.27	1,986
Gipuzkoa	225	9,462	51.76	57.67	1,622
Rioja (La)	141	6,101	41.73	56.13	864
Ceuta	13	861	51.94	50.53	158
Melilla	11	850	43.52	46.21	161

* Annual average.

** Weighted average per places.

HOS (TABLES ANNEX) - YEAR 2011 (4/10)

Provisional data

6. Percentage distribution of Spanish travellers in each province by Autonomous Community of origin

Results by provinces

(Continued)

Provincias	Total	Andalucía	Aragón	Asturias (P. de)	Balears (Illes)	Canarias	Cantabria	Castilla y León	Castilla-La Mancha	Cataluña
TOTAL	100	17.54	2.79	2.53	1.77	2.90	1.39	4.99	3.43	16.28
Albacete	100	8.06	1.30	1.18	0.77	0.65	0.83	3.65	21.83	7.92
Alicante/Alacant	100	5.64	1.82	1.65	0.65	0.85	0.93	4.25	7.04	6.38
Almería	100	48.13	0.92	0.91	0.40	0.31	0.55	2.33	3.44	5.87
Araba/Álava	100	6.18	3.85	2.32	0.73	1.03	2.32	7.08	2.73	15.03
Asturias	100	5.90	1.76	14.04	1.02	1.68	3.75	11.16	2.98	6.88
Ávila	100	10.13	1.51	2.63	0.88	1.39	1.29	11.59	4.79	4.21
Badajoz	100	23.86	1.66	2.13	0.82	0.96	1.17	5.59	4.40	5.33
Balears, Illes	100	11.55	1.14	1.88	20.56	1.06	0.73	1.73	1.34	22.87
Barcelona	100	7.46	2.86	1.41	2.88	2.19	1.14	2.54	1.73	38.82
Bizkaia	100	5.32	2.64	3.77	1.38	1.59	2.11	5.48	1.92	14.81
Burgos	100	6.15	3.12	3.10	0.52	0.92	3.22	16.72	3.23	11.55
Cáceres	100	18.78	1.61	2.70	0.54	0.95	1.54	6.78	4.35	5.20
Cádiz	100	56.47	0.83	0.98	0.75	0.93	0.79	2.98	2.43	4.76
Cantabria	100	5.75	3.18	5.85	0.83	1.57	7.23	12.51	3.73	7.92
Castellón/Castelló	100	3.45	5.58	0.87	0.76	0.38	0.63	3.91	5.04	18.81
Ciudad Real	100	16.75	1.32	1.60	0.80	0.67	0.92	3.59	16.23	6.60
Córdoba	100	48.30	1.41	0.73	0.53	0.78	0.53	2.73	3.79	7.90
Coruña, A	100	7.40	1.43	4.64	1.17	1.53	1.57	6.00	2.42	9.39
Cuenca	100	9.22	2.79	1.53	1.03	0.64	1.01	4.68	12.53	9.08
Gipuzkoa	100	4.53	4.60	3.09	1.14	0.99	2.05	6.03	2.29	19.10
Girona	100	3.63	1.91	0.52	0.84	0.53	0.30	1.16	1.37	75.60
Granada	100	52.15	0.82	0.81	1.05	0.99	0.35	2.13	2.26	6.36
Guadalajara	100	6.50	2.74	1.05	0.45	0.66	1.21	4.28	21.78	10.99
Huelva	100	58.10	0.86	1.40	0.45	1.24	0.43	3.53	2.42	3.51
Huesca	100	3.73	21.06	1.20	1.17	0.91	1.04	3.00	1.96	23.64
Jaén	100	51.39	1.03	0.79	1.22	0.57	0.45	2.13	3.55	6.53
León	100	4.65	1.62	11.33	0.66	1.11	3.01	19.96	2.36	6.55
Lleida	100	2.64	2.33	0.77	0.95	0.59	0.69	1.35	0.91	71.72
Lugo	100	5.22	1.10	7.32	0.47	1.11	1.80	6.32	1.97	6.96
Madrid	100	15.64	2.67	3.02	2.09	3.57	2.04	4.79	3.20	12.79
Málaga	100	59.69	0.92	0.71	0.96	1.17	0.38	2.14	2.47	5.22
Murcia	100	13.85	1.32	1.00	0.86	0.61	0.61	3.00	5.79	8.93
Navarra	100	4.90	5.26	2.42	0.81	1.02	1.85	4.89	2.11	17.71
Ourense	100	2.53	0.71	3.89	0.36	0.53	0.77	5.70	1.55	4.57
Palencia	100	4.23	1.82	5.29	0.54	0.55	5.33	22.99	3.23	7.01
Palmas, Las	100	8.42	0.65	1.47	0.81	35.17	0.70	1.44	0.80	7.45
Pontevedra	100	5.47	1.02	6.39	0.83	1.62	1.47	9.71	2.57	5.94
Rioja, La	100	4.86	5.75	3.41	1.01	1.08	3.15	5.75	2.58	18.38
Salamanca	100	11.23	1.77	4.45	0.83	1.18	2.57	15.62	4.20	5.29
S. C. Tenerife	100	11.74	0.63	0.95	0.52	28.24	0.87	1.69	0.69	5.25
Segovia	100	7.27	2.31	3.51	0.66	0.79	1.74	12.32	4.42	6.09
Sevilla	100	43.75	1.42	0.98	1.05	1.96	0.76	2.70	2.42	9.68
Soria	100	4.33	6.26	1.98	0.40	0.52	1.50	14.51	4.36	12.18
Tarragona	100	3.15	7.45	1.17	0.79	0.52	0.69	2.36	1.57	52.79
Teruel	100	3.55	14.94	0.72	0.64	0.33	0.90	2.01	3.33	19.77
Toledo	100	13.25	2.23	1.91	0.76	0.92	1.09	5.41	14.59	7.05
Valencia/València	100	8.04	3.00	1.23	1.76	1.06	0.62	3.27	5.56	13.55
Valladolid	100	7.45	1.82	4.12	0.83	0.92	2.51	21.50	3.06	6.61
Zamora	100	7.90	1.49	5.70	0.57	0.69	2.47	17.26	3.17	5.23
Zaragoza	100	6.29	15.10	1.75	0.92	0.96	1.50	5.00	3.01	21.82
Ceuta	100	53.96	0.31	0.83	1.10	0.79	1.15	1.34	1.04	2.41
Melilla	100	57.65	0.93	0.56	0.52	1.59	0.21	1.17	1.42	3.87

6. Percentage distribution of Spanish travellers in each province by Autonomous Community of origin

Results by provinces

(Conclusión)

Provinces	Comunitat Valenciana	Extremadura	Galicia	Madrid (C. de)	Murcia (Región de)	Navarra (C. Foral de)	País Vasco	Rioja (La)	Ceuta	Melilla
TOTAL	8.95	1.90	5.18	19.91	2.32	1.42	5.46	0.78	0.26	0.22
Albacete	21.59	1.49	1.59	18.43	7.35	0.90	1.94	0.33	0.09	0.11
Alicante/Alacant	36.99	1.17	1.49	21.32	3.88	1.06	3.89	0.69	0.10	0.18
Almería	8.95	0.77	1.31	12.25	11.03	0.52	1.50	0.29	0.18	0.31
Araba/Álava	5.69	1.04	4.24	19.42	0.80	2.54	23.59	1.33	0.07	0.03
Asturias	3.63	1.51	10.09	22.67	0.91	1.61	9.17	1.09	0.10	0.04
Ávila	6.60	2.80	4.05	41.27	2.04	0.81	3.19	0.56	0.19	0.08
Badajoz	3.83	16.66	3.35	22.75	1.65	1.00	3.88	0.56	0.29	0.11
Balears, Illes	8.34	0.61	2.85	18.97	0.70	0.59	3.91	0.48	0.12	0.56
Barcelona	7.10	0.98	2.71	18.09	1.37	1.44	5.95	0.73	0.33	0.27
Bizkaia	4.07	0.66	3.88	20.80	0.95	3.25	25.67	1.53	0.12	0.05
Burgos	4.82	1.34	6.07	24.96	1.30	1.80	9.75	1.30	0.12	0.01
Cáceres	3.71	11.62	3.40	29.28	1.23	1.15	6.32	0.52	0.28	0.05
Cádiz	2.55	3.41	1.48	15.94	1.18	0.57	2.39	0.36	1.04	0.16
Cantabria	3.70	1.05	5.40	21.57	0.88	2.80	13.73	2.15	0.12	0.04
Castellón/Castelló	32.52	0.67	1.12	17.97	1.43	1.73	3.97	1.06	0.06	0.04
Ciudad Real	9.50	2.61	2.49	26.78	3.29	0.82	5.27	0.59	0.11	0.06
Córdoba	5.58	2.64	1.17	18.55	2.09	0.53	2.01	0.33	0.30	0.12
Coruña, A	4.25	0.95	33.78	19.01	1.20	0.96	3.59	0.60	0.08	0.05
Cuenca	16.86	1.76	2.82	28.78	3.26	0.75	2.47	0.58	0.19	0.03
Gipuzkoa	4.56	0.86	3.87	19.30	0.79	4.12	21.13	1.52	0.04	0.01
Girona	3.44	0.37	1.07	5.22	0.54	0.68	2.27	0.43	0.02	0.09
Granada	8.05	1.40	1.35	14.68	4.46	0.44	1.57	0.37	0.43	0.34
Guadalajara	6.50	1.55	2.03	34.97	1.06	1.08	2.41	0.66	0.03	0.02
Huelva	2.05	8.69	1.44	12.02	0.67	0.38	2.34	0.18	0.15	0.15
Huesca	7.77	0.76	1.45	18.80	0.86	3.07	8.17	1.30	0.05	0.06
Jaén	6.95	1.22	1.38	16.08	3.36	0.56	2.15	0.25	0.30	0.07
León	3.47	1.14	13.41	20.44	0.85	1.60	6.54	1.13	0.13	0.05
Lleida	4.47	0.30	1.23	7.18	0.53	0.63	3.18	0.30	0.14	0.10
Lugo	3.25	0.97	42.20	14.41	1.10	0.90	4.05	0.75	0.06	0.04
Madrid	8.97	2.47	4.87	21.81	2.87	1.75	5.47	1.09	0.43	0.46
Málaga	4.37	2.39	1.47	13.23	1.17	0.35	1.76	0.24	0.63	0.72
Murcia	18.36	0.83	1.56	19.10	21.47	0.45	1.50	0.46	0.19	0.11
Navarra	6.18	0.79	3.38	18.99	1.14	10.52	16.06	1.87	0.08	0.03
Ourense	2.03	1.18	58.76	13.25	0.48	0.39	3.03	0.21	0.04	0.01
Palencia	3.32	1.84	7.21	21.58	1.12	2.12	10.47	1.25	0.05	0.05
Palmas, Las	1.72	0.31	2.45	33.10	0.33	0.42	4.48	0.16	0.08	0.03
Pontevedra	3.26	1.31	35.96	17.40	1.18	1.09	3.98	0.63	0.11	0.05
Rioja, La	6.98	0.72	3.31	19.22	1.23	3.14	15.93	3.37	0.09	0.05
Salamanca	4.35	4.09	6.30	26.24	1.25	1.77	7.58	1.05	0.15	0.07
S. C. Tenerife	1.44	0.39	1.67	41.21	0.21	0.51	3.64	0.20	0.13	0.03
Segovia	6.42	1.97	4.74	38.53	2.24	1.24	4.98	0.63	0.10	0.05
Sevilla	4.58	2.96	2.18	19.56	1.58	0.76	2.49	0.41	0.60	0.16
Soria	6.23	1.01	3.62	30.18	1.15	2.31	8.08	1.33	0.03	0.01
Tarragona	8.63	0.41	1.21	6.66	1.24	3.26	6.51	1.40	0.03	0.17
Teruel	31.26	0.61	1.06	12.74	1.88	1.35	4.24	0.63	0.03	0.01
Toledo	10.06	2.89	3.09	26.09	2.49	1.22	6.01	0.66	0.19	0.08
Valencia/València	23.90	0.94	2.14	26.76	3.58	0.80	2.79	0.51	0.16	0.32
Valladolid	5.30	1.77	7.31	27.75	1.10	1.24	5.71	0.78	0.12	0.07
Zamora	4.71	2.23	12.86	25.79	1.40	0.95	6.65	0.82	0.07	0.03
Zaragoza	7.84	1.08	2.92	20.01	1.33	2.34	6.32	1.37	0.29	0.14
Ceuta	1.98	0.87	0.36	23.96	0.79	0.03	0.49	0.07	7.86	0.64
Melilla	3.79	0.56	1.36	11.08	2.58	0.27	1.21	0.32	2.37	8.54

7. Percentage distribution of overnight stays in each province by Autonomous Community of origin

Results by provinces

(Continued)

Provinces	Total	Andalucía	Aragón	Asturias (P. de)	Balears (Illes)	Canarias	Cantabria	Castilla y León	Castilla-La Mancha	Cataluña
TOTAL	100	17.02	2.79	2.59	1.79	3.32	1.29	5.15	3.62	15.33
Albacete	100	9.21	0.99	0.84	0.65	0.50	0.75	2.83	28.04	7.56
Alicante/Alacant	100	6.31	2.84	3.25	0.59	0.94	1.56	6.76	6.55	5.38
Almería	100	43.64	1.25	1.61	0.46	0.31	0.81	3.44	3.92	7.98
Araba/Álava	100	6.91	3.55	2.16	0.76	1.18	2.10	8.02	2.86	15.08
Asturias	100	7.94	2.05	10.74	1.27	2.30	2.84	9.91	3.53	7.86
Ávila	100	11.16	1.40	2.61	1.03	1.40	1.35	10.81	4.70	4.85
Badajoz	100	25.24	1.88	2.00	1.12	0.84	0.94	5.14	4.33	6.23
Balears, Illes	100	12.38	1.41	2.52	13.97	1.18	0.88	2.33	1.46	23.17
Barcelona	100	8.84	2.70	1.45	2.57	2.35	1.16	2.63	1.74	38.17
Bizkaia	100	6.25	2.49	3.56	1.51	2.07	2.00	5.35	2.05	15.33
Burgos	100	6.62	2.83	2.99	0.67	0.99	2.96	20.30	3.46	11.14
Cáceres	100	18.69	1.65	2.47	0.55	0.92	1.34	6.43	3.79	6.57
Cádiz	100	48.03	1.01	1.55	0.72	0.91	0.91	4.10	2.88	4.98
Cantabria	100	6.80	3.50	5.08	0.97	1.79	5.36	11.79	5.10	8.29
Castellón/Castelló	100	2.77	6.00	1.23	0.80	0.53	0.81	5.92	6.16	15.62
Ciudad Real	100	17.05	1.19	1.53	0.79	0.66	0.81	3.29	17.63	6.30
Córdoba	100	45.78	1.55	0.85	0.58	1.01	0.63	2.92	3.71	8.97
Coruña, A	100	7.68	1.42	4.16	1.23	1.79	1.54	5.85	2.91	9.33
Cuenca	100	10.00	2.97	1.35	0.93	0.75	0.91	4.32	12.83	9.53
Gipuzkoa	100	5.40	4.43	2.93	1.42	1.14	1.79	5.97	2.48	19.97
Girona	100	4.30	2.46	1.03	1.17	0.88	0.40	1.69	2.32	65.89
Granada	100	49.61	1.00	0.97	1.54	1.15	0.40	2.55	2.13	6.96
Guadalajara	100	6.39	2.56	1.21	0.47	0.74	1.47	4.59	23.66	9.83
Huelva	100	47.43	1.16	1.96	0.52	1.56	0.62	5.15	2.58	4.73
Huesca	100	3.71	18.32	1.42	1.56	1.35	1.07	3.56	1.84	22.04
Jaén	100	50.09	1.00	1.02	1.36	0.59	0.39	2.32	3.36	7.37
León	100	4.65	1.52	10.77	0.63	1.11	2.62	24.88	2.45	5.97
Lleida	100	3.22	1.90	1.11	1.09	0.78	0.84	1.48	1.19	66.47
Lugo	100	4.54	0.91	6.88	0.40	0.94	1.62	6.41	1.89	6.29
Madrid	100	16.27	2.65	3.12	2.31	4.13	2.07	4.81	3.14	13.33
Málaga	100	52.89	1.17	1.25	0.92	1.22	0.42	2.87	3.47	5.43
Murcia	100	13.24	1.46	1.32	0.83	0.77	0.79	4.54	7.17	8.55
Navarra	100	5.41	5.87	2.37	0.77	1.25	1.51	4.65	2.29	16.88
Ourense	100	2.71	0.66	4.43	0.39	0.50	0.69	6.04	1.64	4.56
Palencia	100	4.69	1.81	5.31	0.64	0.56	4.83	22.83	3.79	7.01
Palmas, Las	100	8.86	0.71	2.02	0.54	25.94	0.90	1.87	0.84	8.68
Pontevedra	100	6.10	1.01	7.11	0.92	1.81	1.63	10.42	3.02	5.19
Rioja, La	100	6.23	5.41	3.20	1.11	1.12	2.76	6.26	2.82	16.63
Salamanca	100	10.81	1.85	6.76	0.84	1.33	2.21	17.52	3.81	5.75
S. C. Tenerife	100	11.10	0.90	1.47	0.42	17.41	1.06	2.14	0.82	6.39
Segovia	100	7.54	2.09	3.13	0.70	0.85	1.96	12.77	4.57	6.86
Sevilla	100	39.45	1.72	1.10	1.22	2.23	0.86	2.95	2.51	10.94
Soria	100	4.85	5.94	1.77	0.33	0.44	1.41	15.74	4.66	11.83
Tarragona	100	3.63	7.90	1.58	0.69	0.64	0.90	3.37	1.98	43.87
Teruel	100	3.67	18.85	0.94	0.70	0.29	0.76	2.05	3.22	19.41
Toledo	100	13.71	2.24	2.08	0.95	1.00	1.09	5.53	13.20	8.21
Valencia/València	100	8.00	2.98	1.75	1.45	1.40	0.71	4.82	6.84	11.74
Valladolid	100	8.03	2.04	3.89	0.88	1.15	2.35	21.05	3.20	7.06
Zamora	100	8.46	1.55	5.44	0.54	0.73	2.78	18.51	3.40	5.32
Zaragoza	100	6.69	16.08	1.68	0.97	1.19	1.53	5.48	3.13	20.04
Ceuta	100	56.61	0.40	1.01	1.21	0.98	0.90	1.27	1.20	2.00
Melilla	100	63.94	0.73	0.38	0.37	1.11	0.20	0.77	0.87	3.66

7. Percentage distribution of overnight stays in each province by Autonomous Community of origin

Results by provinces

(conclusión)

Provincias	Comunitat Valenciana	Extremadura	Galicia	Madrid (C. de)	Murcia (Región de)	Navarra (C. Foral de)	País Vasco	Rioja (La)	Ceuta y Melilla	Melilla
TOTAL	8.42	1.91	4.96	21.40	2.05	1.48	5.67	0.80	0.21	0.19
Albacete	18.66	0.98	1.37	18.64	6.33	0.82	1.51	0.22	0.06	0.06
Alicante/Alacant	25.73	1.46	2.22	23.60	2.68	1.80	6.98	1.19	0.08	0.09
Almería	7.23	0.81	2.69	14.07	7.82	0.91	2.27	0.49	0.15	0.15
Araba/Álava	6.18	1.11	4.79	18.51	0.84	2.06	22.75	1.05	0.05	0.02
Asturias	4.66	1.61	8.79	24.42	1.16	1.83	7.96	0.99	0.11	0.04
Ávila	6.94	2.74	4.33	39.43	2.12	0.80	3.42	0.50	0.34	0.07
Badajoz	4.16	16.12	2.92	22.05	1.71	0.95	3.51	0.51	0.26	0.09
Balears, Illes	8.07	0.90	4.08	19.37	0.78	0.78	5.40	0.49	0.14	0.69
Barcelona	6.39	1.45	3.01	17.87	1.25	1.43	5.81	0.68	0.28	0.24
Bizkaia	4.88	0.70	4.50	20.82	1.16	2.73	23.15	1.30	0.10	0.05
Burgos	5.15	1.45	5.89	22.71	1.44	1.58	8.49	1.21	0.10	0.01
Cáceres	4.22	14.27	3.11	27.05	1.50	0.96	5.72	0.50	0.23	0.03
Cádiz	2.61	3.42	1.61	20.60	1.11	0.78	3.49	0.51	0.67	0.10
Cantabria	4.38	1.17	4.93	24.62	1.01	2.78	10.22	2.05	0.12	0.03
Castellón/Castelló	24.87	0.65	1.33	23.16	1.23	2.56	4.86	1.45	0.03	0.03
Ciudad Real	8.98	2.79	2.97	26.94	3.20	0.75	4.48	0.50	0.09	0.04
Córdoba	6.19	2.34	1.37	18.26	2.23	0.57	2.23	0.30	0.39	0.11
Coruña, A	4.29	0.96	32.93	19.32	1.33	0.96	3.63	0.53	0.08	0.05
Cuenca	16.30	1.77	2.59	28.31	3.19	0.66	2.33	1.10	0.13	0.03
Gipuzkoa	4.82	0.85	3.61	20.31	0.85	3.55	19.03	1.37	0.06	0.02
Girona	3.84	0.62	2.20	6.71	0.82	1.09	3.61	0.72	0.08	0.17
Granada	8.01	1.36	1.47	15.53	3.96	0.44	1.89	0.37	0.39	0.28
Guadalajara	6.60	2.35	2.55	32.59	1.17	0.86	2.35	0.57	0.03	0.02
Huelva	2.02	8.47	1.94	16.30	0.68	0.54	3.85	0.22	0.17	0.10
Huesca	8.88	0.75	1.81	22.11	0.89	2.34	7.17	1.07	0.05	0.05
Jaén	7.37	1.34	1.57	15.77	3.48	0.59	1.85	0.23	0.25	0.06
León	3.50	1.21	12.16	18.58	0.82	1.64	6.24	1.04	0.13	0.08
Lleida	5.66	0.30	1.33	9.39	0.59	0.65	3.37	0.32	0.13	0.18
Lugo	2.70	0.84	43.63	16.54	0.90	0.85	3.85	0.72	0.04	0.06
Madrid	8.73	2.51	5.33	19.64	2.93	1.71	5.44	1.00	0.43	0.47
Málaga	5.17	3.64	2.45	13.96	0.90	0.44	2.65	0.24	0.44	0.45
Murcia	14.50	0.99	2.19	24.97	15.45	0.59	1.86	0.53	0.15	0.08
Navarra	6.43	0.71	3.85	18.43	1.14	10.79	15.46	2.07	0.08	0.04
Ourense	2.07	0.92	54.48	16.92	0.48	0.34	2.97	0.17	0.03	0.01
Palencia	4.32	1.78	8.07	20.48	1.44	1.75	9.66	0.95	0.05	0.03
Palmas, Las	1.78	0.41	3.05	37.15	0.26	0.49	6.17	0.21	0.05	0.09
Pontevedra	3.59	1.20	31.68	17.43	1.39	1.36	5.09	0.83	0.17	0.05
Rioja, La	7.39	0.97	3.13	19.48	1.32	2.87	15.42	3.76	0.08	0.03
Salamanca	4.76	4.22	6.15	23.74	1.18	1.46	6.63	0.80	0.12	0.05
S. C. Tenerife	1.54	0.44	2.26	47.56	0.27	0.64	5.18	0.22	0.16	0.02
Segovia	6.91	2.63	4.40	35.62	2.57	1.43	5.30	0.54	0.10	0.05
Sevilla	5.07	2.71	2.58	20.09	1.64	0.91	2.83	0.49	0.55	0.15
Soria	7.12	1.28	3.65	27.96	1.18	2.22	8.35	1.19	0.03	0.02
Tarragona	6.85	0.60	1.63	7.84	1.29	5.05	9.80	2.21	0.04	0.11
Teruel	29.36	0.47	1.05	12.31	1.71	1.17	3.41	0.58	0.04	0.01
Toledo	11.31	2.85	3.51	23.49	2.47	1.24	6.22	0.60	0.24	0.06
Valencia/València	18.08	1.16	3.22	29.29	3.23	0.99	3.29	0.59	0.12	0.32
Valladolid	5.61	1.82	7.41	26.94	1.04	1.07	5.54	0.74	0.13	0.06
Zamora	4.50	2.43	12.30	24.15	1.38	0.92	6.73	0.77	0.07	0.02
Zaragoza	7.52	1.21	3.18	20.58	1.44	1.92	5.72	1.25	0.29	0.12
Ceuta	4.30	1.46	0.25	20.54	0.95	0.08	0.34	0.07	5.80	0.63
Melilla	3.04	0.34	1.03	12.90	2.90	0.22	0.91	0.25	1.60	4.79

8. Travellers, overnight stays and average stay by country of residence

Results by countries

Countries	Number of travellers		Overnight stays	
	Total	%	Total	%
TOTAL	85,394,352	100.00	286,615,670	100.00
Residents in Spain	45,709,061	53.53	111,140,732	38.78
Residents abroad	39,685,291	46.47	175,474,938	61.22
Total Residents abroad	39,685,291	100.00	175,474,938	100.00
Total Residents in U.E. (without Spain)	29,320,321	73.88	145,223,666	82.76
- Germany	7,148,916	18.01	47,247,588	26.93
- Austria	388,055	0.98	1,777,008	1.01
- Belgium	1,047,114	2.64	5,441,150	3.10
- Denmark	466,793	1.18	2,523,339	1.44
- Finland	276,094	0.70	1,316,424	0.75
- France	4,255,568	10.72	12,081,591	6.89
- Greece	148,273	0.37	436,268	0.25
- Ireland	543,154	1.37	2,421,196	1.38
- Italy	2,847,184	7.17	9,375,668	5.34
- Luxembourg	75,530	0.19	444,527	0.25
- Netherlands	1,488,194	3.75	7,024,977	4.00
- Poland	510,032	1.29	2,445,567	1.39
- Portugal	1,214,495	3.06	3,112,856	1.77
- United Kingdom	7,323,815	18.45	42,302,275	24.11
- Czech Republic	193,793	0.49	997,004	0.57
- Sweden	743,599	1.87	3,940,246	2.25
- Rest of UE*	649,704	1.64	2,335,988	1.33
Norway	449,592	1.13	2,356,047	1.34
Russia	978,635	2.47	5,688,473	3.24
Switzerland	697,251	1.76	3,151,738	1.80
Rest of Europe	837,544	2.11	2,690,729	1.53
Japan	615,744	1.55	1,028,425	0.59
United States of America	2,012,497	5.07	4,389,445	2.50
Rest of America	2,363,745	5.96	5,381,585	3.07
African's countries	425,142	1.07	937,503	0.53
Rest of the world	1,984,816	5.00	4,627,321	2.64

*Countries included in the Rest of UE: Bulgaria, Cyprus, Slovakia, Slovenia, Estonia, Hungary, Latvia, Lithuania, Malta and Romania

9. Evolution in the year 2011: travellers, overnight stays and average stay

Months	Number of travellers			Overnight stays			Average stay
	Total	Residents in Spain	Residents abroad	Total	Residents in Spain	Residents abroad	
TOTAL	85,394,352	45,709,061	39,685,291	286,615,670	111,140,732	175,474,938	3.36
January	3,922,545	2,348,195	1,574,350	12,178,567	5,079,165	7,099,403	3.10
February	4,814,264	2,978,765	1,835,498	14,221,488	6,340,721	7,880,767	2.95
March	5,828,994	3,376,372	2,452,622	18,039,954	7,736,490	10,303,464	3.09
April	7,429,664	4,087,408	3,342,256	22,650,107	9,881,796	12,768,311	3.05
May	7,793,604	3,732,852	4,060,752	24,669,927	8,344,847	16,325,080	3.17
June	8,819,343	4,422,299	4,397,044	30,661,200	10,535,825	20,125,375	3.48
July	10,088,978	5,098,188	4,990,790	38,045,430	14,092,994	23,952,436	3.77
August	10,590,214	5,597,983	4,992,231	41,513,116	17,218,120	24,294,996	3.92
September	8,919,170	4,405,447	4,513,723	32,203,965	11,131,921	21,072,044	3.61
October	7,676,616	3,895,484	3,781,132	24,764,874	8,467,324	16,297,550	3.23
November	4,909,224	2,873,387	2,035,837	14,623,835	6,247,847	8,375,989	2.98
December	4,601,737	2,892,681	1,709,056	13,043,204	6,063,682	6,979,523	2.83

10. Evolution in the year 2011: establishments, capacity, occupancy and employed personnel

Months	Number of open estim. establishm. according to survey *	Number of estimated bedplaces according to survey*	Occupancy		Employed personnel*
			Per bedplaces **	Per bedplaces at weekend **	
TOTAL	14,976	1,424,711	53.55	58.42	192,880
January	12,527	1,075,103	36.31	39.19	143,302
February	13,217	1,155,511	43.54	51.17	153,355
March	13,987	1,245,971	46.33	53.59	164,336
April	15,110	1,397,874	53.03	57.95	185,857
May	15,930	1,610,914	48.92	55.08	210,450
June	16,408	1,685,813	58.89	65.61	226,538
July	17,024	1,726,864	67.26	69.62	243,877
August	16,947	1,732,892	72.33	75.26	248,705
September	16,563	1,707,037	61.75	66.72	236,250
October	15,334	1,519,077	51.98	56.32	201,537
November	13,570	1,142,082	42.46	47.84	153,957
December	13,094	1,097,396	38.10	41.58	146,394

* Annual average.

** Weighted average per places.

HOS (TABLES ANNEX) - YEAR 2011 (10/10)

Provisional data

Hotel Price Index (HPI). 2008 Base

Year 2011

Provisional data

Interannual variation rates by Autonomous Community

	Weighted average HPI rate
TOTAL	0.2
Andalucía	-1.5
Aragón	-4.3
Asturias (Principado de)	-1.7
Balears (Illes)	1.7
Canarias	2.3
Cantabria	-1.8
Castilla y León	-2.0
Castilla-La Mancha	-3.7
Cataluña	1.5
Comunitat Valenciana	-0.4
Extremadura	-0.6
Galicia	-3.0
Madrid (Comunidad de)	-1.4
Murcia (Región de)	-3.0
Navarra (Comunidad Foral de)	-0.6
País Vasco	-0.3
Rioja (La)	-1.1
Ceuta	2.9
Melilla	-1.0

The average interannual variation rates for HPI have been calculated as an average of the interannual variation rates for HPI weighted by occupied rooms each month.

Indicators on the Profitability of the Hotel Sector

Year 2011

Provisional data

ADR and RevPAR for Autonomous Communities and National Total

	ADR (en euros)	Tasa de variación interanual	RevPAR (en euros)	Tasa de variación interanual
TOTAL	70.3	1.4	40.3	6.4
Andalucía	73.1	-1.1	37.4	1.7
Aragón	57.6	-2.6	19.0	-7.1
Asturias (Principado de)	61.1	0.1	22.7	1.6
Balears (Illes)	66.2	2.7	49.5	10.8
Canarias	72.4	2.9	55.6	14.9
Cantabria	67.5	-1.3	27.0	-5.1
Castilla y León	56.0	-1.1	20.1	-2.7
Castilla-La Mancha	57.5	-4.9	17.6	-7.6
Cataluña	78.5	3.7	47.2	8.0
Comunitat Valenciana	61.7	2.0	34.6	6.1
Extremadura	57.0	-1.2	20.0	1.1
Galicia	55.9	-1.6	19.2	-13.4
Madrid (Comunidad de)	80.9	-0.6	50.1	3.5
Murcia (Región de)	60.0	-4.7	26.4	-4.3
Navarra (Comunidad Foral de)	65.3	-1.7	25.9	-0.6
País Vasco	72.5	-3.9	40.4	-0.1
Rioja (La)	61.0	2.7	28.2	2.4
Ceuta	69.9	-2.1	38.2	-1.9
Melilla	63.9	-2.8	36.7	6.8

National ADR and RevPar and breakdown by categories

	ADR (en euros)	Tasa de variación interanual	RevPAR (en euros)	Tasa de variación interanual
TOTAL	70.3	1.4	40.3	6.4
HOTELS: Gold stars				
Five	147.6	2.2	86.0	9.5
Four	78.1	0.4	51.6	5.9
Three	57.7	0.9	36.7	6.2
Two	53.3	1.7	23.8	2.3
One	50.1	2.6	17.8	1.5
GUESTHOUSES: Silver stars				
Three and two	45.4	-1.2	15.0	-3.0
One	38.8	4.0	12.3	9.5

The average interannual indicators and variation rates for ADR and RevPAR have been calculated as an average of the mensual data respectively, weighted by occupied rooms each month.

Due to the updating in the establishments directory carried out in the Canary Islands, Comunidad Foral de Navarra y Extremadura, data (for the annual 2011 in those CCAA and the national total) are not directly comparable with the annual data published in 2010.