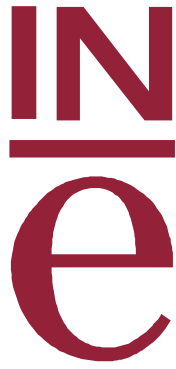


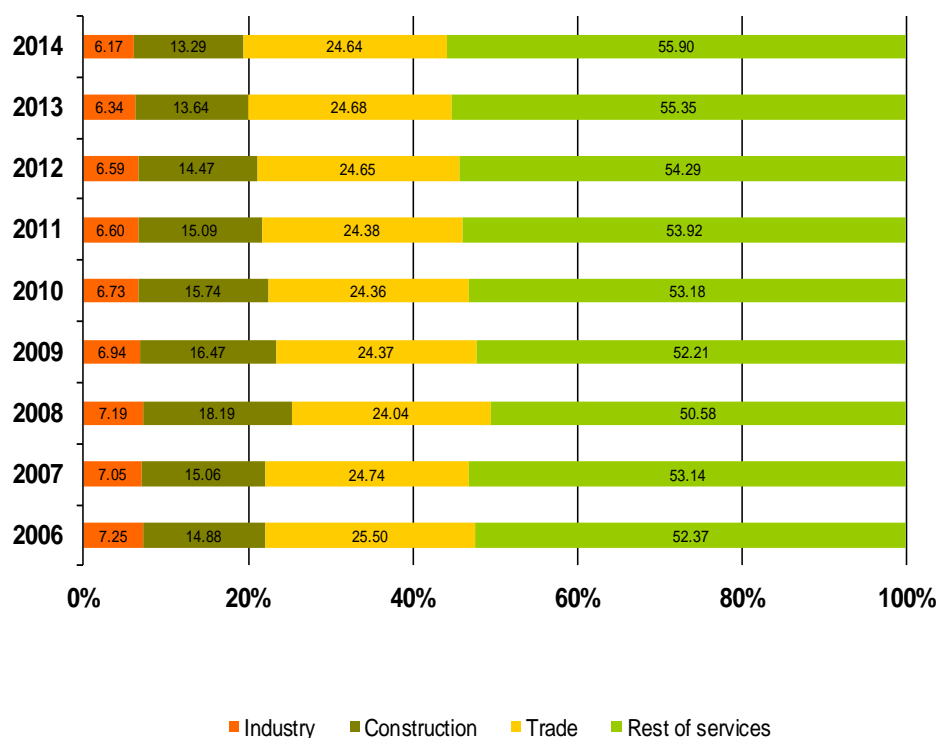
INSTITUTO NACIONAL DE ESTADISTICA



Graph Annex

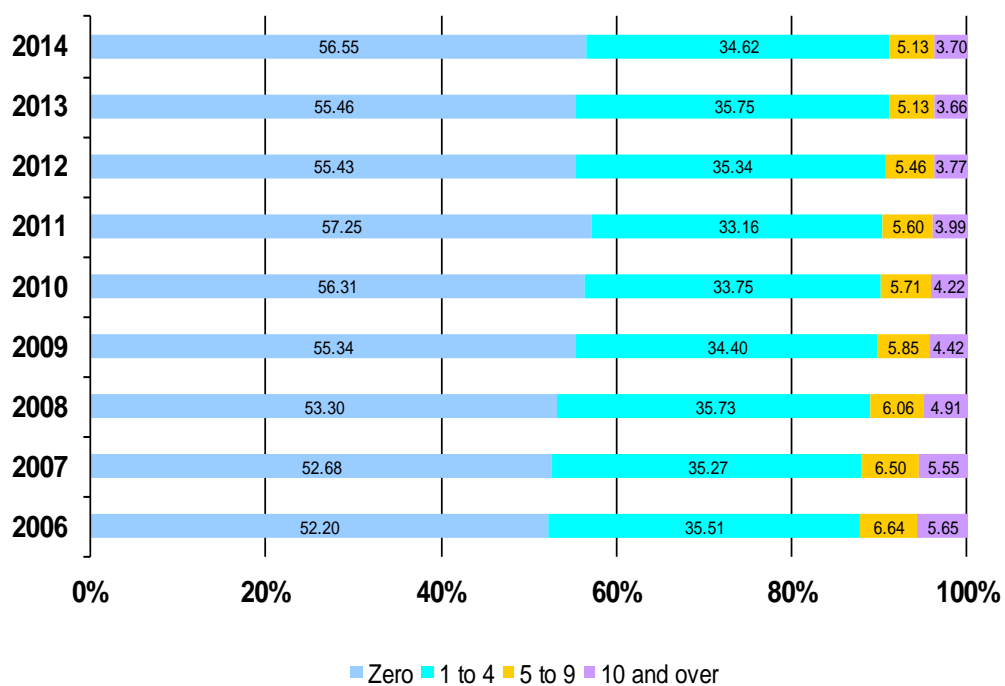
Serie 1.- Enterprise stock

Graph 1.1: Distribution by economic sector (1)

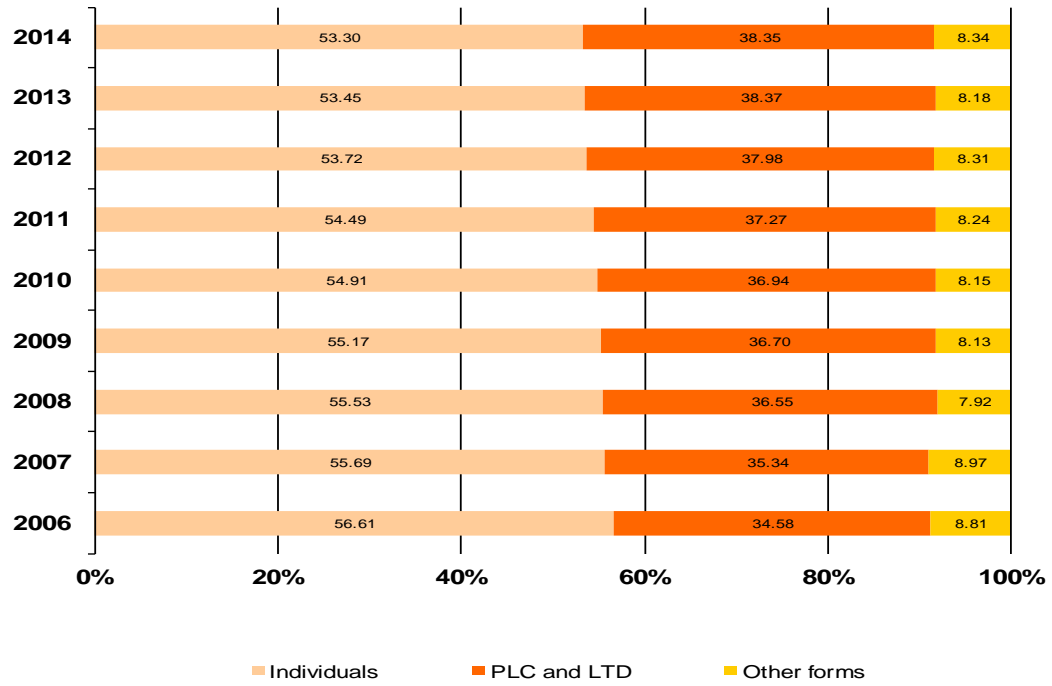


(1) Data since 2008 in CNAE-2009. Not comparable with previous years.

Graph 1.2: Distribution by wage earner bracket

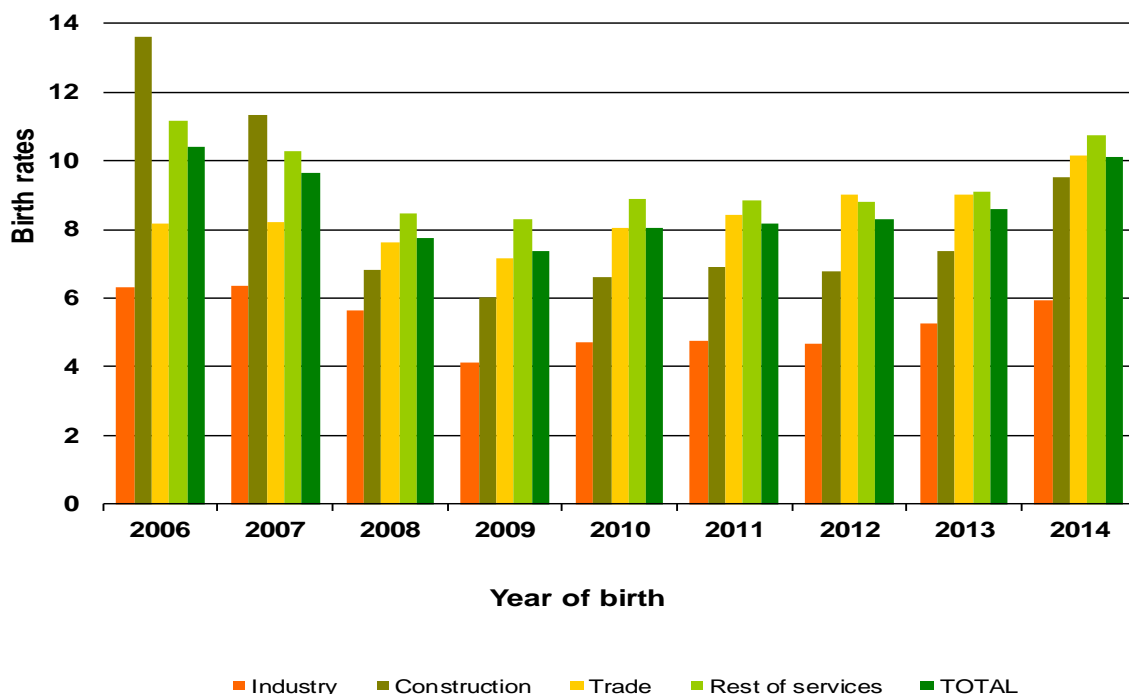


Graph 1.3: Distribution by legal form



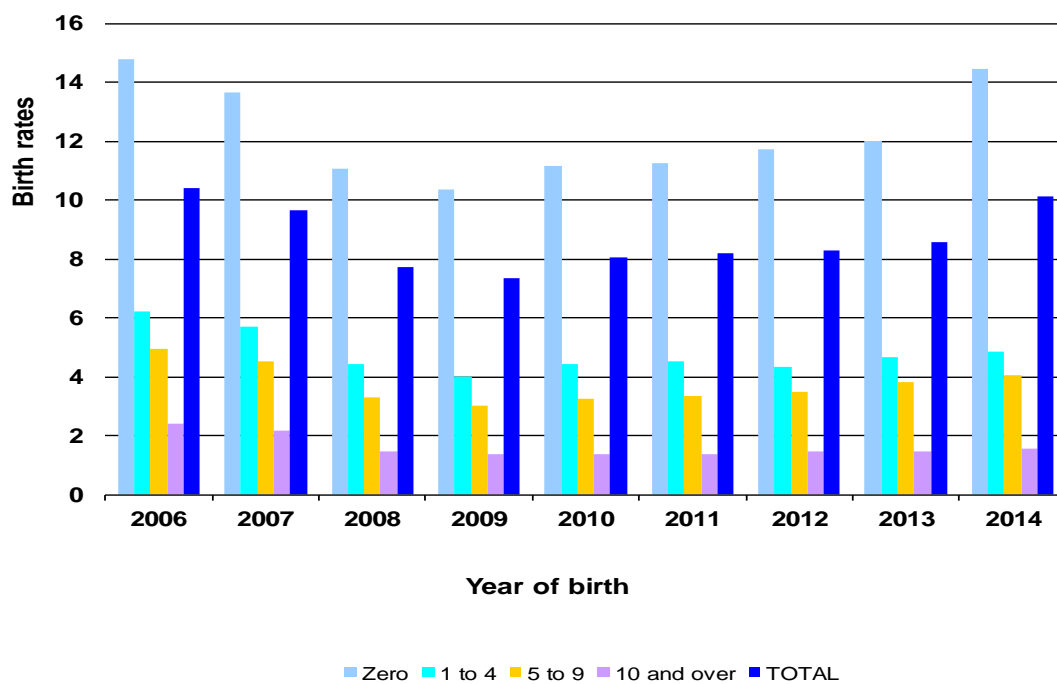
Series 2.- Births of enterprises

Graph 2.1: Rates by economic sector (1)

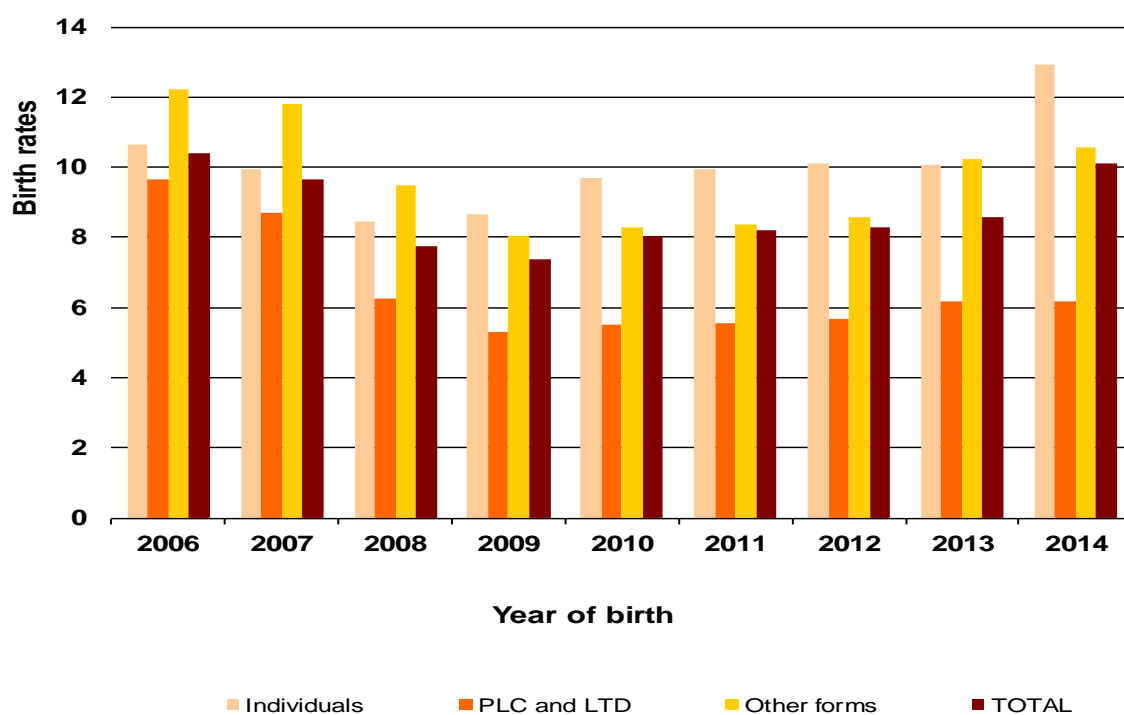


(1) Data since 2008 in CNAE-2009. Not comparable with previous years.

Graph 2.2: Rates by wage earners brackets

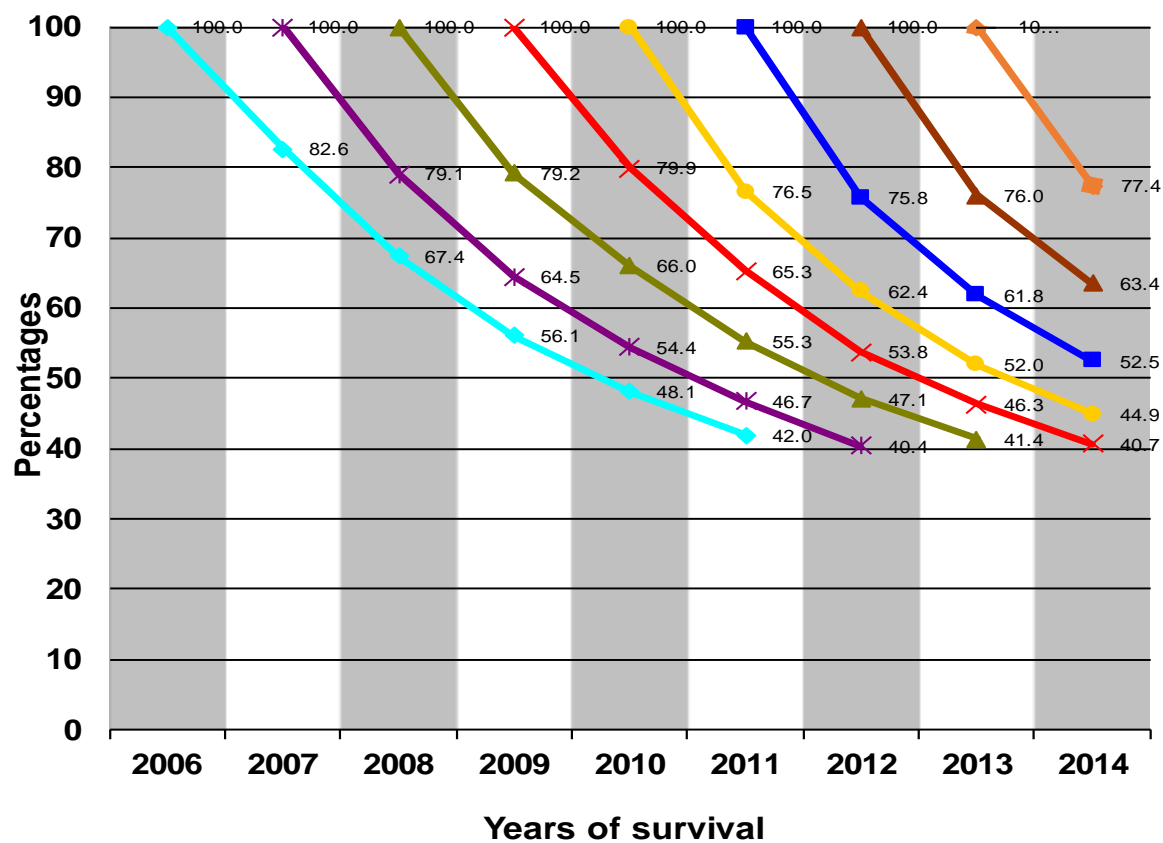


Graph 2.3: Rates by legal forms



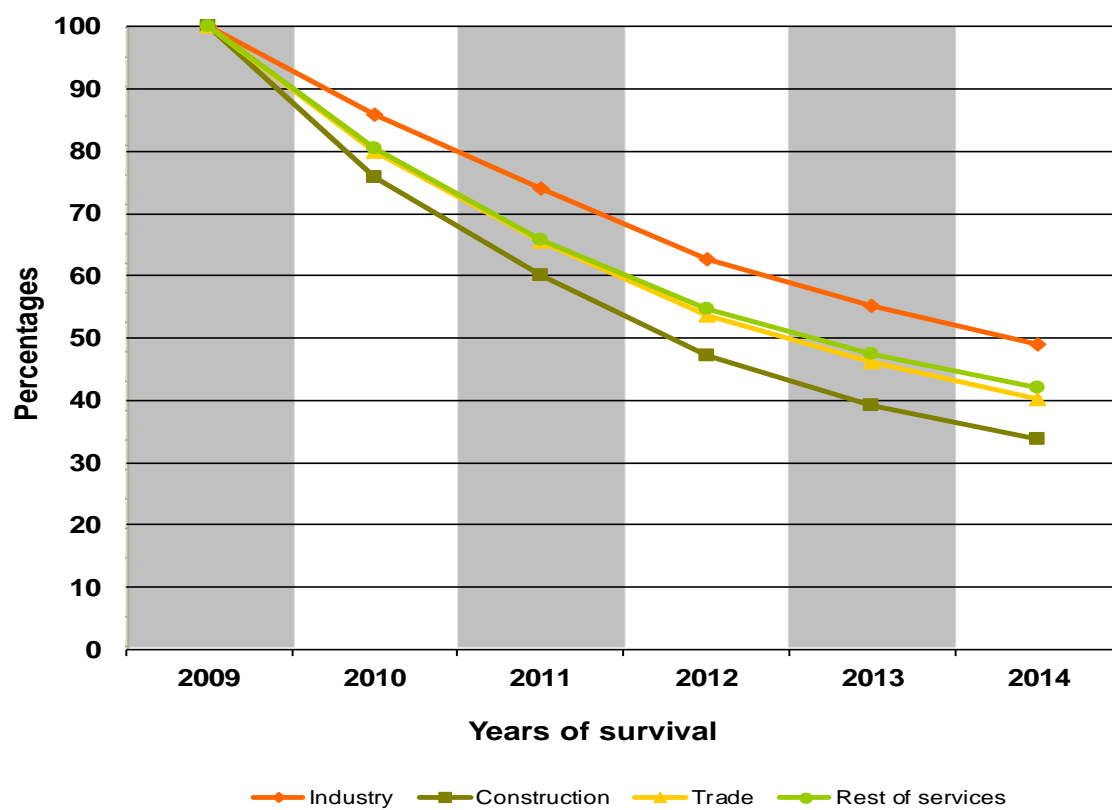
Serie 3.- Survival of enterprises

Graph 3.1: Survival rates in the cohorts from 2006 to 2013



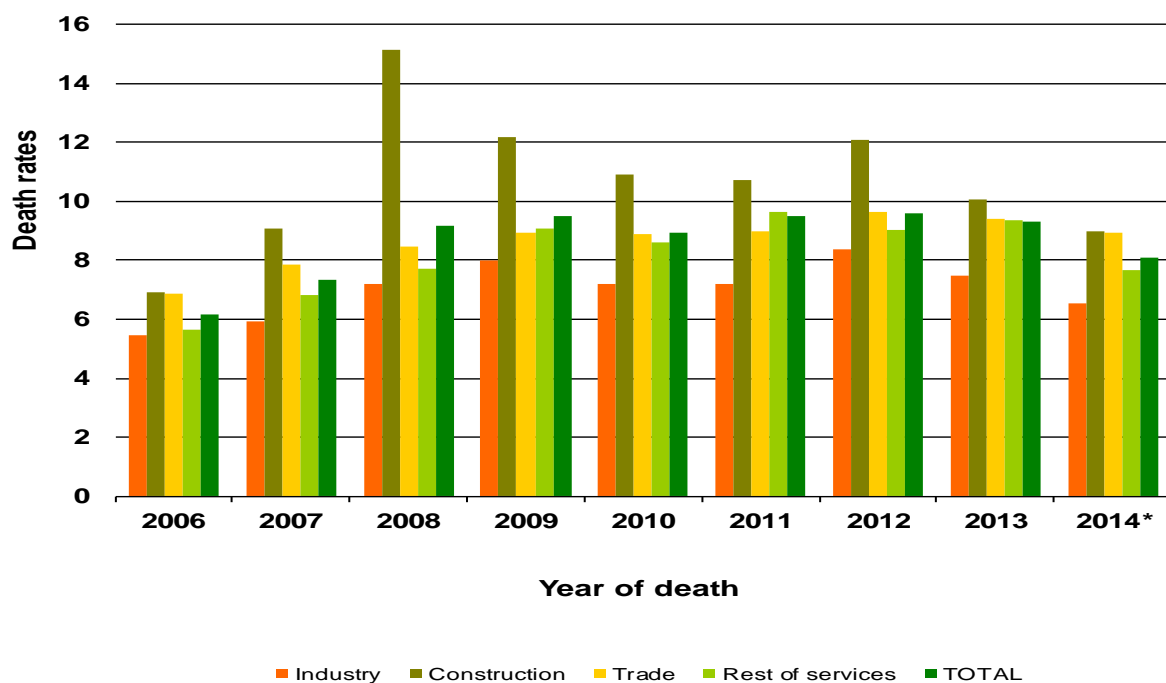
2006 COHORT 2007 COHORT 2008 COHORT 2009 COHORT
 2010 COHORT 2011 COHORT 2012 COHORT 2013 COHORT

Graph 3.2: Survival rates in the cohort from 2009 by economic sectors



Serie 4.- Deaths of enterprises

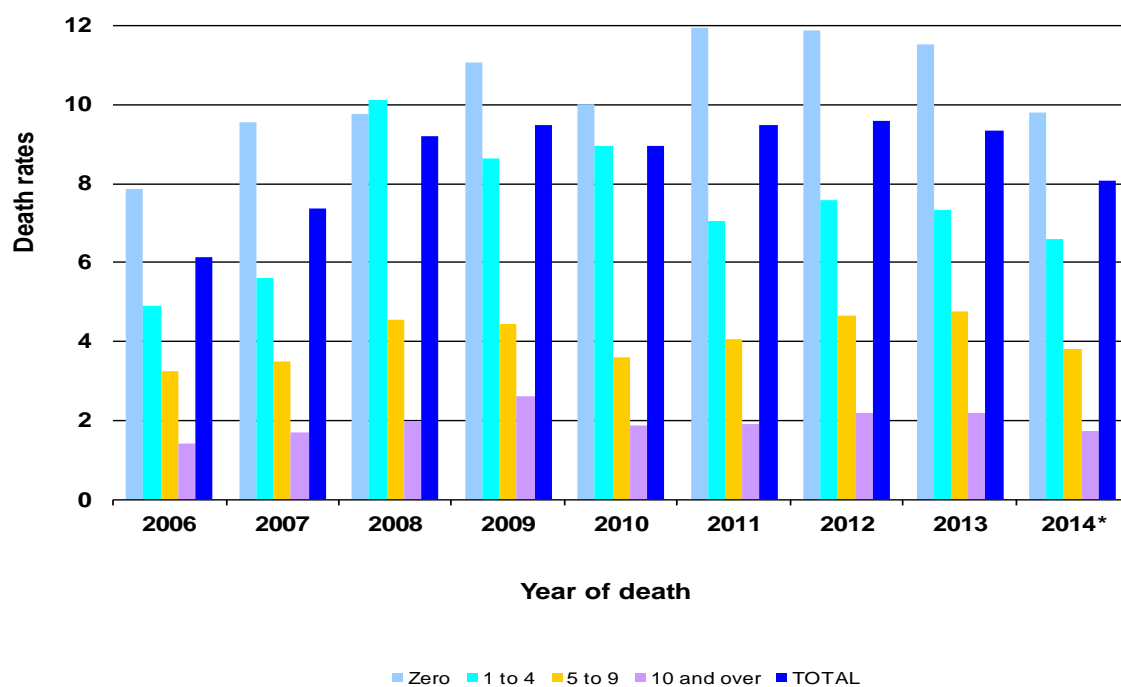
Graph 4.1: Rates by economic sector (1)



(1) Data since 2008 in CNAE-2009. Not comparable with previous years.

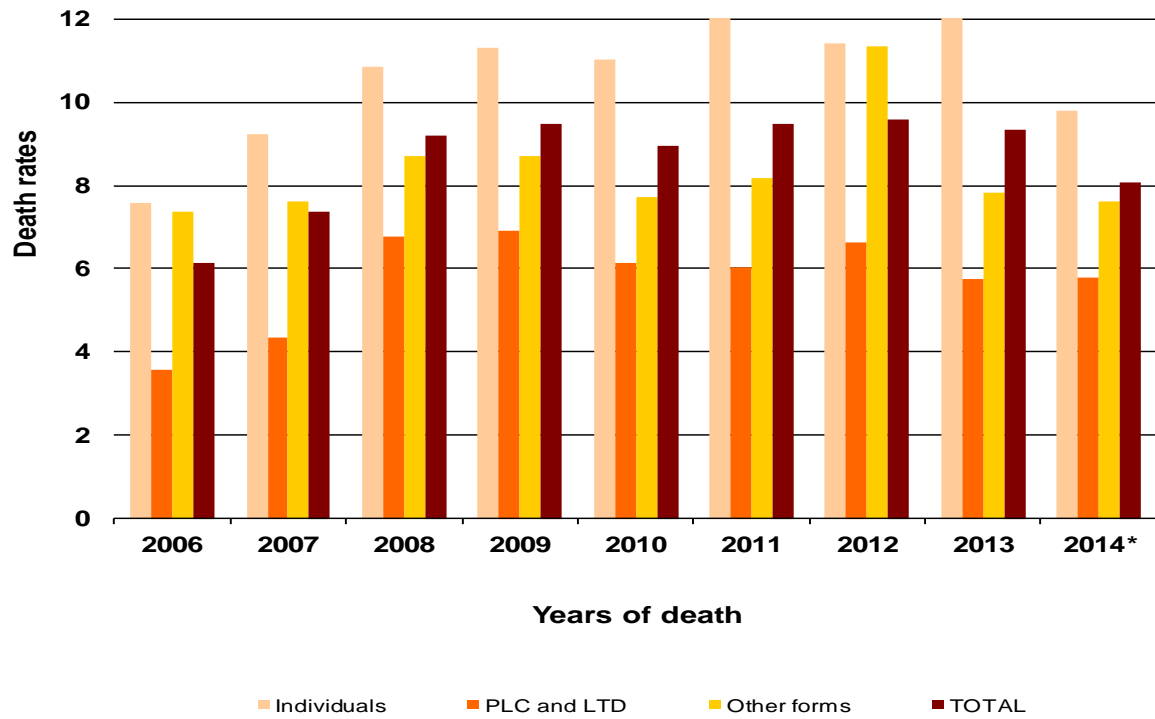
(*)Provisional data.

Graph 4.2: Rates by wage earners bracket



(*) Provisional data.

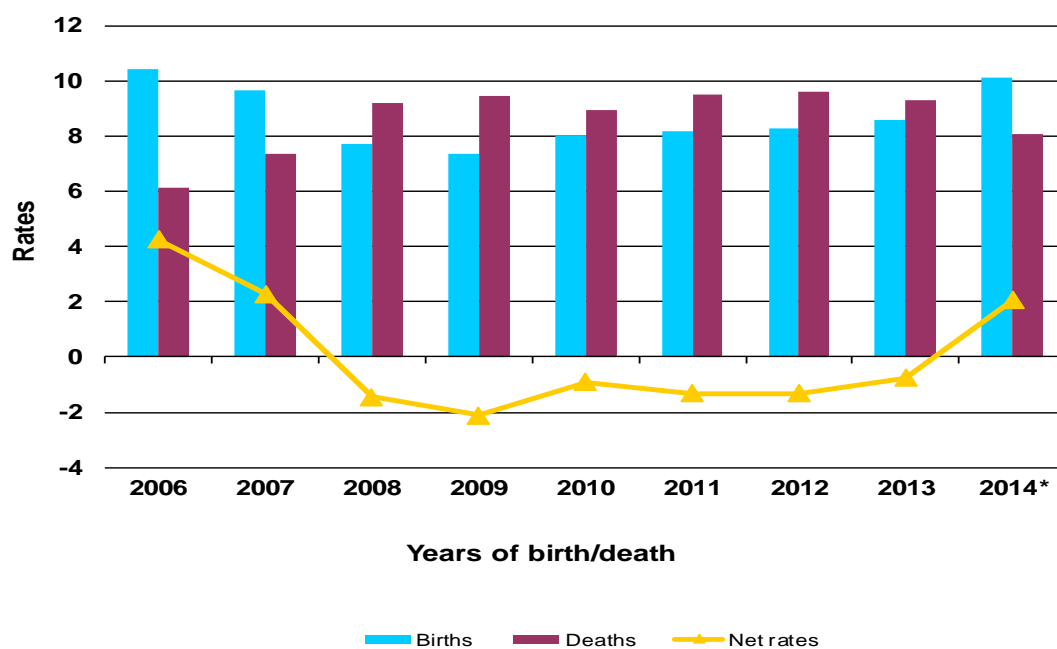
Graph 4.3: Rates by legal form



(*)Provisional data.

Serie 5.- Net rates

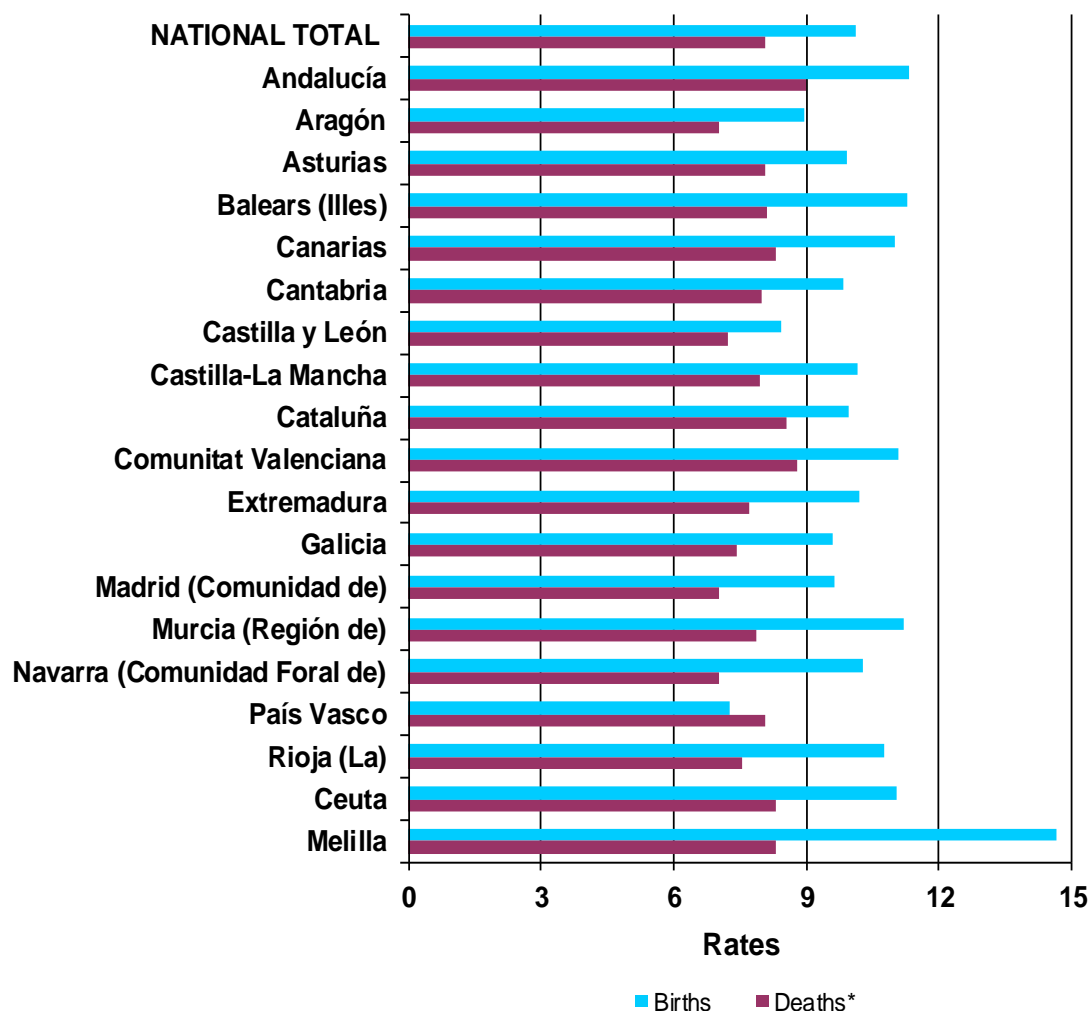
Graph 5.1: Net rates (births - deaths) on total units



(*)Provisional data for the death rate for 2014

Serie 6.- Autonomous Communities

Graph 6.1: Birth and death rates for 2014, by Autonomous Community



(*)Provisional data for the death rate for 2014.