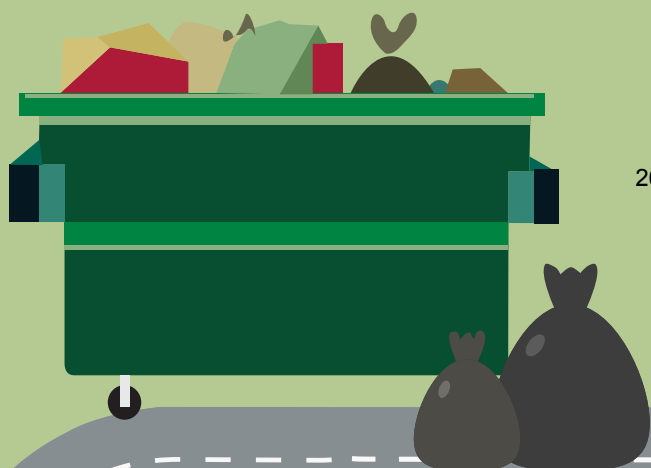


Urban waste collection, 2016

21.9 million tonnes of waste
(1.1% more than 2015)

471.0 kilograms per person
(1.0% more than 2015)



18.1 million tonnes
of mixed waste
(1.7% more than 2015)

3.8 million tonnes
of separately collected waste
(1.7% less than 2015)

= 1000 tonnes
 = 500 tonnes
 = 100 tonnes
 = 50 tonnes

= 1000 tonnes
 = 500 tonnes
 = 100 tonnes
 = 50 tonnes

