

21 December 2011

University Entrance Exams
Year 2011

271,499 students take the University Entrance Exams in 2011, that is, 10.9% more than the previous year

85.8% of the students who take the exam pass it

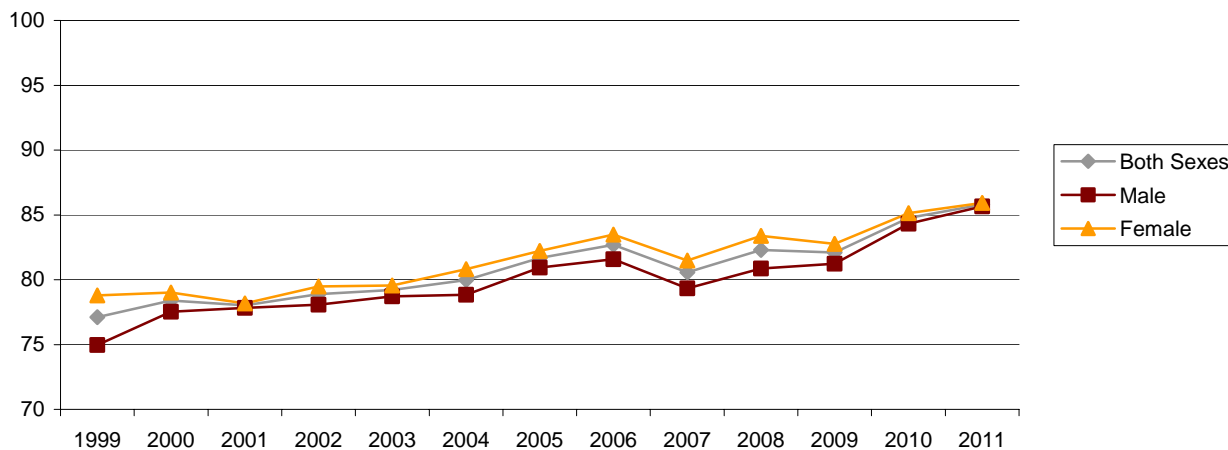
A total of 271,499 students took the University Entrance Exams (PAU) in 2011, with a 10.9% increase, as compared with the previous year. Of the total who took it, 55.3% were women. The percentage of passing marks reached 85.8%, which was similar for women and men (85.9%, as compared with 85.7%).

187,431 students sat the exam in June, and 91.5% of them passed. In the September examination session, 76.6% of the students who took it passed.

In turn, in the entrance exams for persons over 25 years of age, 31,853 students took the exams, 2.6% more than the previous year, and 69.2% of them passed. 4.7% of the students who took these tests did so in private universities.

In the second year of existence of the exams for persons over 45 years of age, 5,954 students took the exams, which was 10.2% more than in 2010. 65.8% of them passed, which was 8.6 points higher than the previous year. For this exam, 5.0% of the students who took it did so in private universities. 65.4% passed the exams in public universities, while this figure was 73.9% in private universities.

Evolution of the rate of students passing over students taking the exam, by sex



Student body taking and passing the exams by phases

Excluding both the exams for persons over 25 years of age, and the exams for persons over 45 years of age, 193,341 students (82.7%) took both phases, the general phase and the specific phase, and 91.6% of them passed.

In June, 159,071 students took the general and specific phases, and 94.4% of them passed. In the extraordinary September examination session, this percentage dropped to 78.7%. Conversely, 17,610 students (7.5%) preferred to take only the general phase, and 77.3% of them passed it.

This year, 22,741 students took only the specific phase (students who wished to improve their marks obtained in previous exams, or their marks obtained in the modules of the Advanced Education Cycles). 76.9% of them did so at the June examination session.

71.6% of these students passed the exam in some subject they were being tested on, with the percentage in the extraordinary September examination session (74.1%) begin higher than that recorded in the June session (70.1%).

Students taking the PAU and percentage of pass marks, by phase, examination session and sex. Year 2011

	Students taking the exam			Percentage of pass marks		
	Total	Men	Women	Total	Men	Women
TOTAL						
Total	271,499	121,468	150,031	85.8	85.7	85.9
June	187,431	80,904	106,527	91.5	91.6	91.5
September	46,261	21,962	24,299	76.6	78.0	75.4
Persons over 25 years of age	31,853	16,260	15,593	69.2	70.0	68.3
Persons over 45 years of age	5,954	2,342	3,612	65.8	62.5	68.0
General phase and Specific phase						
Total	193,341	84,987	108,354	91.6	91.6	91.6
June	159,071	68,485	90,586	94.4	94.4	94.4
September	34,270	16,502	17,768	78.6	80.3	77.1
General phase only						
Total	17,610	8,748	8,862	77.3	77.7	76.8
June	10,867	5,271	5,596	82.8	83.0	82.6
September	6,743	3,477	3,266	68.4	69.7	67.0
Specific phase only						
Total	22,741	9,131	13,610	71.6	71.6	71.6
June	17,493	7,148	10,345	70.8	71.1	70.6
September	5,248	1,983	3,265	74.1	73.3	74.6

Methodological note

The University Entrance Exams Statistics are a comprehensive study, targeting universities holding said exams. It is carried out annually.

The main objective is to provide data regarding the students taking and passing these exams, as well as the most relevant characteristics thereof (sex, university and examination session).

In the year 2010, the entrance exams were amended with regard to previous years, and were structured into two phases:

- the general phase, compulsory in nature, whose purpose is to evaluate the maturity and basic skills that the student must attain at the end of Post-Secondary Education in order to pursue official Degree-level university education
- the specific phase, which is voluntary, whose purpose is to assess the knowledge and reasoning ability in specific disciplines related to the intended course of study. This enables improving marks obtained in the general phase, in order to embark on the chosen field of study. It is also possible for students to take exams in this phase for the purpose of improving their marks from the Advanced Education Cycles.