

2 August 2013

**Structure and dynamism of the fabric business in Spain
Central Companies Directory (CCD) at 1 January 2013**

The number of active companies decreases 1.7% in 2012, standing at 3.15 million

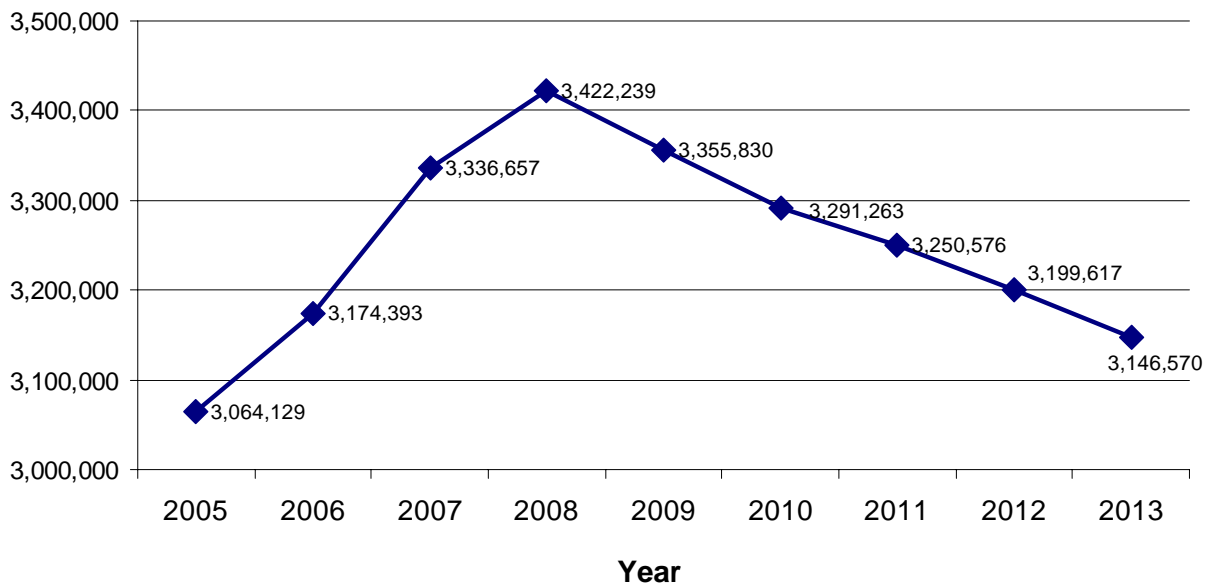
13.0% of the active companies have more than 19 years, whereas 17.7% have less than two years

The activities with most net creation of companies were health, legal sciences and accounting

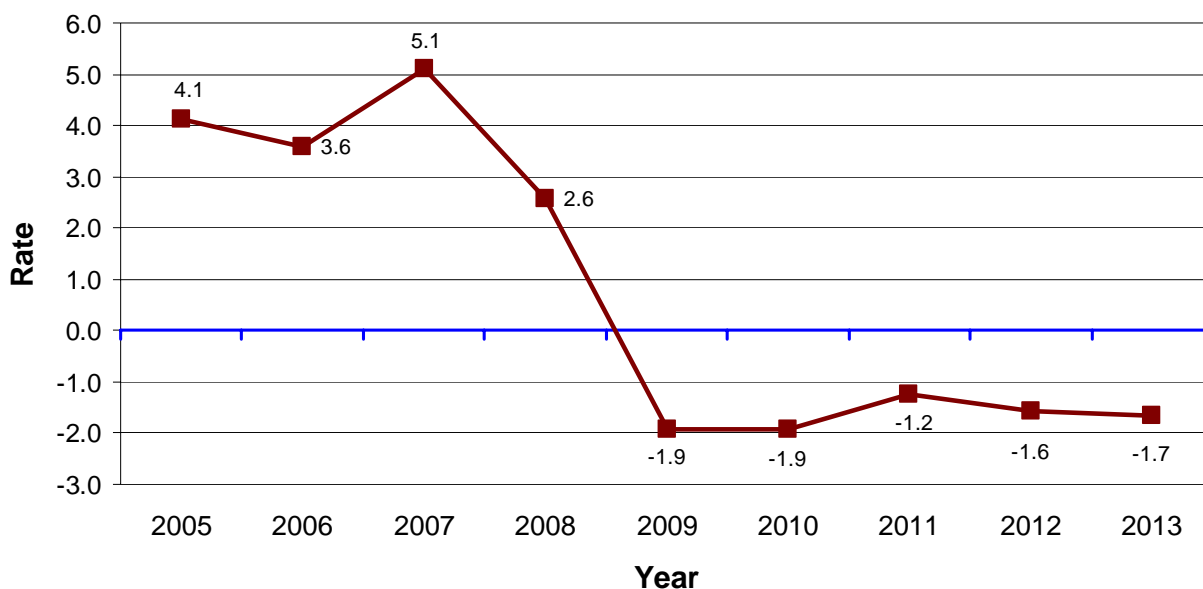
The number of active companies decreased 1.7% during 2012, standing at 3,146,570, according to the latest update of the Central Companies Directory (CCD) at 1 January 2013.

This was the **fifth consecutive year with a decrease in the number of active companies.**

Population evolution of the companies (2005-2013)



**Population evolution of the companies
(interannual variation rates)**



Active companies by economic sector

The sector of *Services, excluding Trade* continued to carry the greatest weight in the corporate population structure. At 1 January 2013, it represented 55.6% of the total.

This sector, that registered 1,749,013 active companies, nearly the same figure than that of the previous year, included all those companies dedicated to accommodation, transport and storage, information and communications, financial and insurance activities, real estate, professional, scientific and technical activities, administrative and support services activities, educational, health and social care activities and other types of social activity, including personal services.

The weight of *Trade* was also significant, with 24.3% of the total. This sector included those companies that carried out wholesale and retail trade activities, and trade intermediaries. The population of active companies of the Trade sector decreased 1.1% up to 765,379, as compared with the previous year.

Finally, the companies of the *Construction* sector showed 13.5% of the total and those of the *Industry* sector showed 6.6%. In comparison with the previous year, the number of construction companies decreased 8.0% and that of the industrial companies did so by 3.9%.

Active companies by number of employees

From a size perspective, measured by the number of employees, a reduced scale continued to be a feature of Spanish companies.

According to the data at 1 January 2013, more than 1.68 million companies did not hire any employee. This figure accounted for 53.4% of the total. Moreover, other 922,646 companies (29.3% of the total) had between one and two employees.

Adding these two groups, the result is that **more than eight out of 10 companies had two or fewer employees.**

Considering only the companies with employees, those employing 20 or more workers represented 4.3% of the total.

The highest percentages of small companies were registered in *Rest of services* sectors (84.4% have two or fewer employees) and *Trade* (82.2%).

Conversely, the weight of large companies was concentrated in the industrial sector, where 7.4% of the total employed 20 or more persons.

Active companies by economic sector, by employee bracket

Data at 1 January 2013

	Total	Industry	Construction	Trade	Rest of services
TOTAL	3,146,570	206,585	425,593	765,379	1,749,013
No employees	1,681,588	77,507	253,093	380,589	970,399
1 to 2 employees	922,646	57,984	109,863	248,673	506,126
3 to 5 employees	280,643	26,052	34,416	77,937	142,238
6 to 9 employees	125,029	15,185	13,346	33,721	62,777
10 to 19 employees	74,204	14,467	8,978	14,050	36,709
20 or more employees	62,460	15,390	5,897	10,409	30,764

Active companies by age

The population of active companies is characterised by a great dynamism, as only 13.0% existed 20 years ago or more.

Conversely, an important presence of young companies can be observed. As a matter of fact, 17.7% did not reach two years as economically active units.

The following table combine this criterion with the activity performed. It can be observed that the distribution by ages is not homogeneous for the different sectors considered.

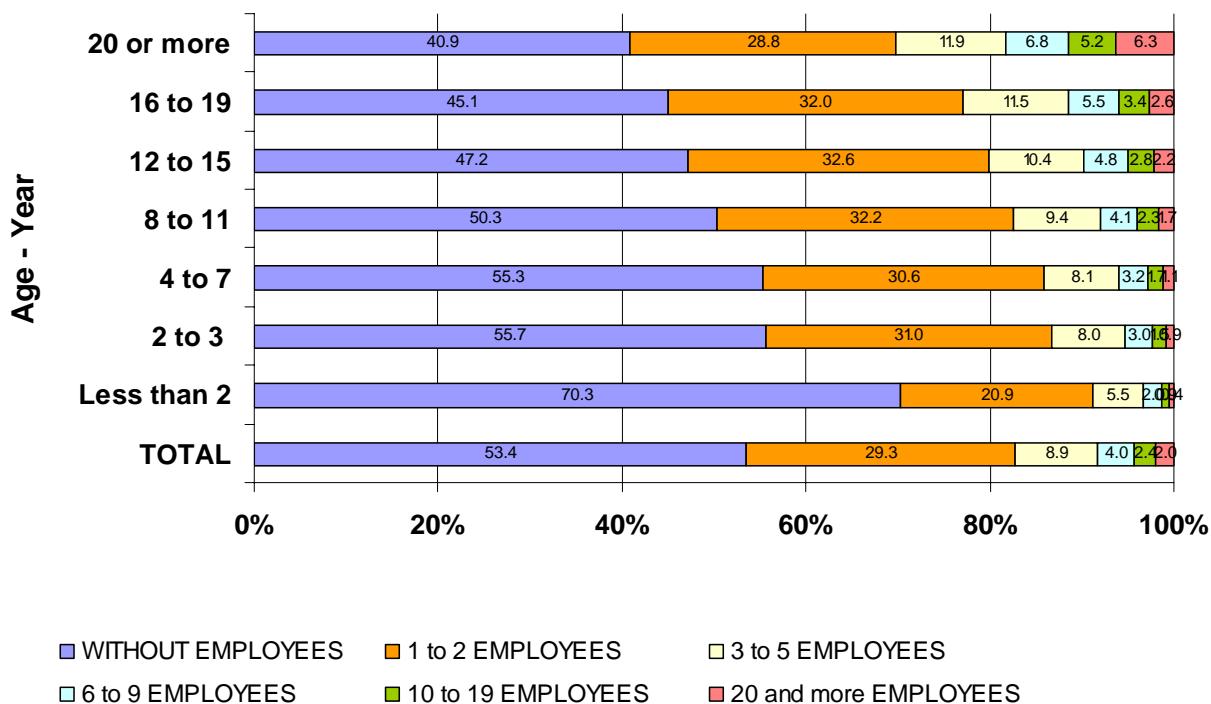
Industrial companies registered proportions of older companies (22.7% have 20 years or over), whereas the representation of younger companies is higher in activities related to the services sector, especially in *Accommodation* (25.3% did not reach its second year).

Active companies by economic sector, by age bracket
Data at 1 January 2013

	Total	0 - 1	2 - 3	04-Jul	08-Nov	Dec-15	16 - 19	20 or more
TOTAL	3,146,570	556,419	379,757	655,123	473,234	373,741	296,090	412,206
Industry	206,585	21,299	17,030	37,942	28,317	28,210	26,955	46,832
Construction	425,593	65,786	50,381	109,506	75,058	51,782	38,458	34,622
Trade	765,379	140,170	85,562	129,860	106,610	94,118	83,064	125,995
Transport and storage	206,123	23,066	16,763	37,354	30,460	28,816	27,514	42,150
Accommodation	282,512	71,369	39,707	53,453	37,861	29,078	22,079	28,965
Rest of services	1,260,378	234,729	170,314	287,008	194,928	141,737	98,020	133,642

The following chart combine the seniority of the companies with other basic structural element, as it is the size of the companies measured depending on the employees stratum.

Distribution of the size of companies in each age group



In a similar way, the age is not homogeneous and it is related to the size of the companies. In fact, the presence of young companies is relevant considering micro enterprises (23.3% of the companies without employees, between its first and second year), whereas bigger companies registered the greatest representation of the veteran companies (41.4% of the companies or 20 employees or more has 20 years or over).

Company registrations and delistings

Considering evolution over time, it was worth noting that 332,299 companies began the exercise of economic activities during 2012.

In turn, 399,033 companies ceased all their activities.

79.4% of the economic units registered in 2012 were already active companies the previous year.

Companies registered according to demographic category

Data at 1 January 2013

Demographic category	Total	Percentage of the total
TOTAL	3,545,603	100
New	332,299	9.4
Remaining in business	2,814,271	79.4
Delistings	399,033	11.2

The economic activities that created more companies in net terms between 1 January 2012 and 1 January 2013 were *Health (5,161) legal and accounting (2,440) Administrative office activities and other business support activities (2,162)*.

Sectors with most net creation of companies

CNAE-2009 divisions	New	Delistings	Net balance
health	13,677	8,516	5,161
legal and accounting activities	12,168	9,728	2,440
Administrative office activities and other business support activities	13,190	11,028	2,162
Support activities for financial services and insurance	8,805	7,813	992
Services in buildings and gardening activities	5,488	4,663	825
Central headquarter activities; business and management consultancy activities	1,697	1,045	652
Programming, consultancy and other activities related to IT	3,891	3,292	599
Advertising and market studies	4,546	4,051	495
Publishing	1,510	1,148	362
Veterinary activities	884	527	357
Telecommunications	961	728	233
Activities of libraries, archives, museums and other cultural activities	657	445	212
Information services	916	735	181
Postal and courier activities	1,098	1,004	94
Accommodation services	1,827	1,737	90

In turn, the activities in which most companies ceased their activity in net terms during 2012 were *Building construction (-20,426), specialised construction activities (-12,707) and Retail trade, except motor vehicles and motorcycles (-6,965)*.

Sectors with highest net number of companies that have discontinued their activity

CNAE-2009 divisions	New	Delistings	Net balance
Building construction	21,357	41,783	-20,426
specialised construction activities	19,273	31,980	-12,707
Retail trade, except of motor vehicles and motorcycles	54,995	61,960	-6,965
Technical architecture and engineering services; technical trials and analysis	10,088	15,690	-5,602
Land transport and transport via pipelines	10,907	15,990	-5,083
Real estate activities	11,078	15,712	-4,634
Supply of electrical energy, gas, steam and air conditioning	48	3,589	-3,541
Food and beverage services	42,533	45,683	-3,150
Civil engineering	1,003	3,626	-2,623
Manufacture of metal products, except machinery and equipment	2,359	4,263	-1,904
Other professional, scientific and technical activities	4,993	6,672	-1,679
Education	8,763	10,183	-1,420
Research and development	926	2,270	-1,344
Other personal services	9,784	10,961	-1,177
Manufacture of furniture.	856	1,975	-1,119

Active companies by Autonomous Community

Cataluña accounted for the most active companies at 1 January 2013, with 18.5% of the total. It was followed by Comunidad de Madrid (15.8%) and Andalucía (15.0%).

All the communities reduced the number of active companies during 2012.

Active companies, according to economic sector, by Autonomous

Data at 1 January 2013

	Total	Industry	Constructi on	Trade	Rest of services
TOTAL	3,146,570	206,585	425,593	765,379	1,749,013
Andalucía	471,521	27,935	54,917	133,803	254,866
Aragón	88,067	6,895	13,182	20,088	47,902
Asturias	66,869	3,705	8,928	15,540	38,696
Balears (Illes)	85,044	4,551	14,526	17,075	48,892
Canarias	129,566	5,234	14,629	32,965	76,738
Cantabria	37,190	2,150	5,694	8,601	20,745
Castilla y León	162,153	12,240	25,616	40,789	83,508
Castilla-La Mancha	124,405	12,625	20,508	33,663	57,609
Cataluña	580,804	38,133	77,161	130,221	335,289
Comunitat Valenciana	337,161	24,922	43,872	87,309	181,058
Extremadura	63,353	4,964	8,712	19,537	30,140
Galicia	192,998	13,039	30,090	50,105	99,764
Madrid (Comunidad de)	496,003	23,902	61,119	98,032	312,950
Murcia (Región de)	87,146	6,743	12,612	24,238	43,553
Navarra (Comunidad Foral de)	40,860	3,901	6,249	9,603	21,107
País Vasco	153,709	13,003	23,962	35,048	81,696
Rioja (La)	22,316	2,497	3,194	5,556	11,069
Ceuta	3,610	82	317	1,438	1,773
Melilla	3,795	64	305	1,768	1,658

Methodological note

The Central Companies Directory (CCD) includes, in a single information system, all Spanish companies and their local units located within Spain. It is a key infrastructure tool which enables the carrying out and coordinating of the research system aimed at production units.

In order to meet this requirement, the CCD must be updated as necessary and units must be shown with reliable identification, localisation and classification data.

The CCD is compiled and maintained over time from the primary data originating from a range of sources of an administrative and statistical point of origin, submitting all this information to a sophisticated process of filtering, alignment and integration for the purpose of achieving total national coverage.

The CCD is a project that has been carried out by the INE since 1989, and currently, with reference 1/1/2013, has information available relating to the population of companies with a presence in Spain (3,146,570 active units), as well as local units where said companies carry out their activities.

Other objectives are:

–To provide structural data on the number of companies and premises existing in Spain, classified by main economic activity, employee bracket, legal condition and geographical location.

–To offer data on temporary evolution of the companies as concerns new companies, companies remaining in business and companies that have closed down, detected in the year of updating the Directory, and their classification by the usual variables.

–To satisfy demands for information required by international bodies, in particular, by the Statistical Office of the European Communities (Eurostat).