

4 December 2013

Updated on 19 December 2013

**Vital Statistics (Births, Deaths, and Marriages)**  
Final data for 2012 and preview data for the first half of 2013

**The number of births decreases 6.2% and mortality decreases 6.1% in the first half of 2013, as compared with the same period of the previous year**

**The natural growth of the population was 6,384 persons, 10.7% less than in the first six months of 2012**

**The number of marriages decreases 3.9% in the first half of the year as compared with the same period of 2012**

**Birth rate**

In the first half of the year, a total of 210,778 births were registered, 6.2% less than in the same period of 2012. Thus, the birth rate has followed the downward trend that started in 2009.

The drop in births was a result of the combined effect of a lower number of women of childbearing age and with lower fertility.

**Births in the first half of the year. Years 2008 to 2013**  
**National total**

Year	Total Births		Births of foreign mothers		
	1st half	% variation over the same period of the previous year	Births 1st half	% of the total	% variation over the same period of the previous year
2008	255,062		51,593	20.2	
2009	243,818	-4.4	49,848	20.4	-3.4
2010	233,737	-4.1	47,667	20.4	-4.4
2011	230,568	-1.4	44,642	19.4	-6.3
2012	224,782	-2.5	42,653	19.0	-4.5
2013(*)	210,778	-6.2	38,664	18.3	-9.4

(\*) Provisional data

The **percentage of births to foreign women** also decreased, dropping from the 19.0% they represented in the first half of the previous year to the 18.3% they registered in 2013.

**Mortality**

During the first half of 2013, a total of 204,394 persons died in Spain, 6.1% less than in the same period of 2012.

**Deaths in the first half of the year. Years 2008 to 2013**

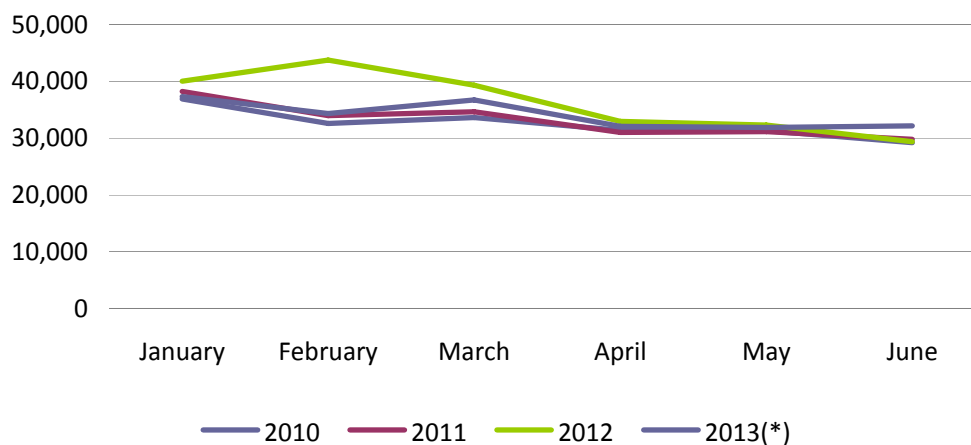
**National Total**

Year	Total deaths 1st half	% variation over the same period of the previous year
2008	199,119	
2009	199,879	0.4
2010	194,924	-2.5
2011	198,773	2.0
2012	217,634	9.5
2013(*)	204,394	-6.1

(\*) Provisional data

The relative diminution in the number of deaths was due to a short-term increase in the deaths registered in February and March of 2012. This caused an increase in the number of deaths in the first six months of 2012, reaching 217,634 deaths, 9.5% more than in the same period of 2011.

**Comparison of the number of deaths, by month, from January to June 2010-2013**



(\*) Provisional data

It is worth noting that foreign residents in Spain who died in the first half of 2013 accounted for 2.7% of the total deaths, despite the fact that this group represents more than 11% of the resident population. This was due to the fact that the foreign population was, in general, much younger than the Spanish population.

### Natural growth

The natural growth of the population (that is, the difference between births and deaths) decreased up to 6,384 persons in the first six months of 2013. This figure was 10.7% lower than that of the same period of 2012 and 88.6% lower than that of the first half of 2008.

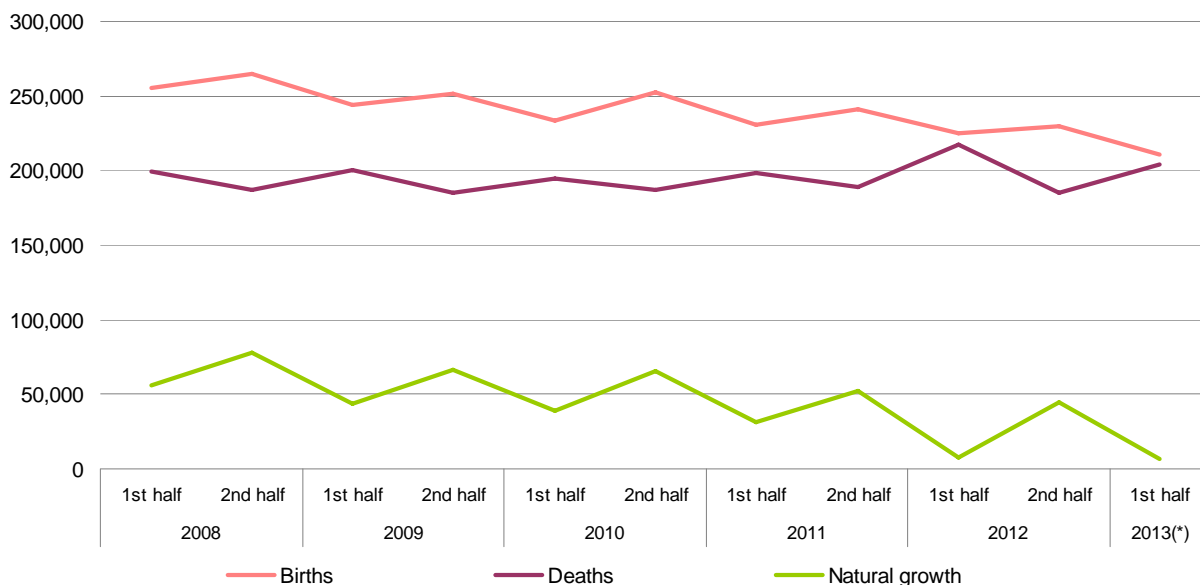
**Natural growth, by six-month period (2008-2013). National total**

Year		Births	Deaths	Natural growth	% variation over the same period of the previous year
2008	1st half	255,062	199,119	55,943	
	2nd half	264,717	187,205	77,512	
2009	1st half	243,818	199,879	43,939	-21.5
	2nd half	251,179	185,054	66,125	-14.7
2010	1st half	233,737	194,924	38,813	-11.7
	2nd half	252,838	187,123	65,715	-0.6
2011	1st half	230,568	198,773	31,795	-18.1
	2nd half	241,431	189,138	52,293	-20.4
2012	1st half	224,782	217,634	7,148	-77.5
	2nd half	229,866	185,316	44,550	-14.8
2013(*)	1st half	210,778	204,394	6,384	-10.7

(\*) Provisional data

Nevertheless, it is worth noting that the first halves of the year are usually characterized by a higher mortality and a lower number of births than the second halves. Because of that, the expected natural growth of 2013 is still clearly positive.

**Evolution of births and deaths, by six-month period (2008-2013)**



## Marriage

The number of marriages registered a decrease of 3.9% in the first half of 2013 as compared with the same period of the previous year, reaching 70,996.

On the other hand, 2.4% of the total marriages registered corresponded to same-sex couples (1,690).

### Marriages held in the first half of the year (2008-2013)

Year	Total	Different sex		Same-sex			% of the total
		Number	% different sex over the total	Number	Between males	Between females	
2008	88,066	86,465	98.2	1,601	1,036	565	1.8
2009	79,390	77,879	98.1	1,511	1,000	511	1.9
2010	74,690	73,090	97.9	1,600	1,005	595	2.1
2011	70,190	68,572	97.7	1,618	961	657	2.3
2012	73,873	72,081	97.6	1,792	1,011	781	2.4
2013	70,996	69,306	97.6	1,690	963	727	2.4

### Data by Autonomous Community

In the first half of 2013, the number of births decreased in all Autonomous Communities, except in the Autonomous Cities of Ceuta and Melilla.

The Autonomous Communities that registered a greater decrease in the number of births in the first half of the year were Canarias (-15.8%), Comunidad Foral de Navarra (-11.0%). In turn, Aragón (-1.9%) and Región de Murcia (-2.1%) presented the lowest decreases in the number of births, as compared with the same period of 2012.

The number of deaths also registered a decrease in all Autonomous Communities in the first half of 2013. Mortality rates only registered an increase in the Autonomous City of Ceuta.

Región de Murcia and Castilla-La Mancha (both at -8.8%) registered the highest decreases in the number of deaths as compared with the first half of 2012. In turn, Galicia (-3.0%) and Comunidad Foral de Navarra (-3.6%) registered the slightest decreases.

The natural growth (births minus deaths) was negative in nine Autonomous Communities (Galicia, Castilla y León, Principado de Asturias, Extremadura, Aragón, Cantabria, País Vasco, Canarias and La Rioja). The first five Autonomous Communities had already registered a negative natural growth in 2012 and 2011.

## Births and deaths. First half of 2012 and 2013 by Autonomous Community

	Births			Deaths			Natural increase 1st half 2013
	1st half 2012	1st half 2013	Variation	1st half 2012	1st half 2013	Variation	
Total	224,782	210,778	-6.2	217,634	204,394	-6.1	6,384
Andalucía	42,016	40,793	-2.9	37,589	34,764	-7.5	6,029
Aragón	5,940	5,829	-1.9	7,355	7,033	-4.4	-1,204
Asturias, Principado de	3,799	3,480	-8.4	6,972	6,678	-4.2	-3,198
Balears, Illes	5,264	5,071	-3.7	4,358	4,113	-5.6	958
Canarias	8,351	7,034	-15.8	7,626	7,097	-6.9	-63
Cantabria	2,470	2,369	-4.1	3,149	2,942	-6.6	-573
Castilla y León	9,605	9,099	-5.3	15,216	14,215	-6.6	-5,116
Castilla-La Mancha	10,170	9,528	-6.3	10,333	9,424	-8.8	104
Cataluña	38,591	35,347	-8.4	34,195	32,021	-6.4	3,326
Comunitat Valenciana	23,129	21,539	-6.9	22,564	21,426	-5.0	113
Extremadura	4,710	4,485	-4.8	6,375	5,857	-8.1	-1,372
Galicia	10,550	10,072	-4.5	16,617	16,119	-3.0	-6,047
Madrid, Comunidad de	34,899	31,952	-8.4	22,788	21,534	-5.5	10,418
Murcia, Región de	8,049	7,878	-2.1	5,822	5,307	-8.8	2,571
Navarra, Comunidad Foral de	3,424	3,046	-11.0	2,857	2,755	-3.6	291
País Vasco	10,340	9,870	-4.5	10,783	10,206	-5.4	-336
Rioja, La	1,642	1,509	-8.1	1,601	1,515	-5.4	-6
Ceuta	502	576	14.7	267	273	2.2	303
Melilla	711	721	1.4	255	244	-4.3	477
Residents abroad	620	579	-6.6	912	873	-4.3	-294

Finally, the number of marriages decreased in all Autonomous Communities in the first six months of 2013, except in Illes Balears and Canarias.

### Final data for the year 2012

Today the final data of the Vital Statistics and Basic Demographic Indicators for the year 2012 are also disseminated. The summary is outlined in the following tables:

### Final data 2012. Births, deaths, marriages and natural growth. By Autonomous Community

	Births	Deaths	Natural growth	Marriages
National total	454,648	402,950	51,698	168,556
Andalucía	86,375	68,361	18,014	29,622
Aragón	11,980	13,724	-1,744	4,716
Asturias, Principado de	7,622	13,151	-5,529	4,012
Balears, Illes	11,002	8,068	2,934	4,031
Canarias	17,201	14,081	3,120	5,899
Cantabria	5,064	5,812	-748	2,349
Castilla y León	19,046	28,259	-9,213	8,214
Castilla-La Mancha	20,382	19,051	1,331	7,492
Cataluña	77,438	62,977	14,461	27,358
Comunitat Valenciana	47,574	42,303	5,271	17,284
Extremadura	9,423	11,347	-1,924	3,694
Galicia	21,089	30,871	-9,782	9,505
Madrid, Comunidad de	69,374	42,799	26,575	25,200
Murcia, Región de	16,682	10,680	6,002	4,957
Navarra, Comunidad Foral de	6,731	5,376	1,355	2,263
País Vasco	20,533	20,281	252	8,063
Rioja, La	3,188	3,023	165	1,133
Ceuta	1,128	487	641	409
Melilla	1,516	471	1,045	381
Abroad	1,300	1,828	-528	1,974

### Basic demographic indicators 2012. Data by Autonomous

	Crude birth rate	Crude mortality rate	Crude marriage rate	Short-term fertility indicator	Average age at maternity	Average age at first marriage	Life expectancy
Total	9.69	8.58	3.56	1.32	31.56	32.71	82.29
Andalucía	10.30	8.15	3.53	1.39	31.11	31.72	80.96
Aragón	8.94	10.24	3.52	1.30	31.91	32.87	82.74
Asturias, Principado de	7.12	12.28	3.75	1.06	31.98	32.97	81.55
Balears, Illes	9.96	7.31	3.65	1.25	31.21	33.50	81.92
Canarias	8.22	6.73	2.82	1.07	30.82	33.79	81.58
Cantabria	8.57	9.83	3.97	1.19	32.13	32.63	82.57
Castilla y León	7.54	11.18	3.25	1.17	32.16	33.22	83.20
Castilla-La	9.71	9.07	3.57	1.35	31.38	31.91	82.73
Cataluña	10.33	8.40	3.65	1.40	31.44	33.12	82.53
Comunitat	9.52	8.46	3.46	1.31	31.48	32.46	81.91
Extremadura	8.55	10.30	3.35	1.27	31.58	31.70	81.45
Galicia	7.63	11.16	3.44	1.08	32.15	32.74	82.29
Madrid, Comunidad	10.80	6.66	3.92	1.33	32.09	33.54	83.74
Murcia, Región	11.42	7.31	3.39	1.53	30.88	31.49	81.73
Navarra, Comunidad Foral	10.53	8.41	3.54	1.46	32.21	32.88	83.48
País Vasco	9.42	9.30	3.70	1.35	32.61	33.67	82.79
Rioja, La	9.96	9.44	3.54	1.41	31.76	32.96	82.69
Ceuta	13.40	5.78	4.86	1.84	30.04	29.92	80.58
Melilla	18.34	5.70	4.61	2.53	29.54	29.63	80.42

### Methodological note

Vital Statistics (VS) quantify the number of births, deaths and marriages taking place in Spain over the course of a year. Their basic source of information are the birth, death and marriage bulletins that are completed at the time of registering said demographic events in the Civil Register, and transmitted by those responsible for this to the Provincial Delegations of the INE.

Said operation is prepared in partnership with the statistical services of the Autonomous Communities, pursuant to the agreement signed with them for this purpose.

Using the Vital Statistics, the INE compiles the Life Tables for Spain, and a collection of Basic Demographic Indicators, which enable monitoring the historical performance of the behaviour of the population resident in Spain with regard to births, deaths and marriages.

### Publication of results

Today, the INE is publishing the **preview results** of Vital Statistics, referring to the first half of 2013, as preview information regarding the behaviour of the birth, death and marriage rates during the first half of the year, which include a limited number of results tables broken down according to different demographic and geographical variables.

Likewise, today the INE is publishing the **final results of the Vital Statistics corresponding to the year 2012**, the Basic Demographic Indicators and the Life Tables for said year.

The calendar for the subsequent publications is as follows:

- June 2014: **preview results for the whole of the year 2013**.
- December 2014: **final results for the whole of the year 2013**, including the complete breakdown thereof, together with the **preview data for the first half of 2014**.