

Improving the statistical process in the Hotel Occupancy Survey

Session 18 – Multi-Source Statistics

2nd June

Elena Rosa-Pérez

INE Spain

elena.rosa.perez@ine.es

Tourism in Spain



Tourism in Spain

In 2015, 68.2 million visitors spent 56.5 billion dollars

421.9 million overnight stays in tourist accommodations,
269 of which are of non-residents

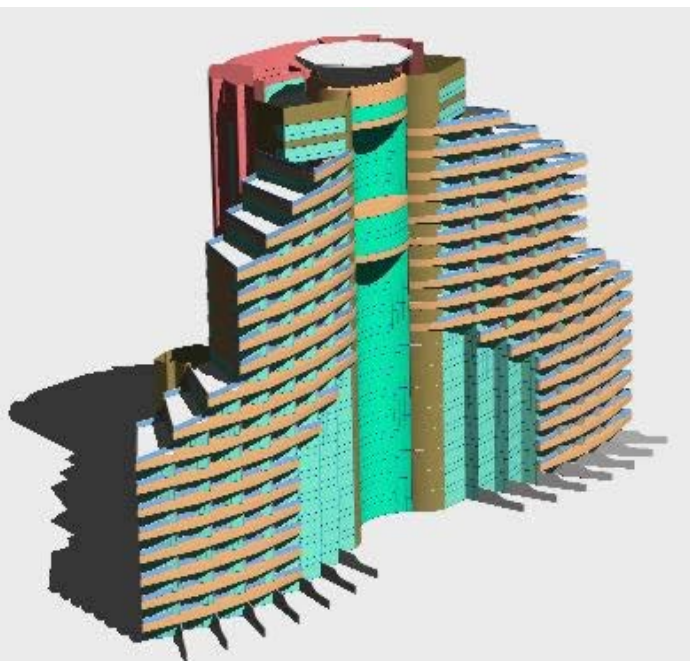
Non-residents prefer sun and beach: 88% of non-residents
overnight stays are on the coast



73% of total overnight stays were
accounted for at hotels

The average daily rate in 2015 was 78.7 €,
179€ in 5* hotels in Madrid,
84€ in 4* hotels in Canary Islands

Tourism is really important in the Spanish economy



The Hotel Occupancy Survey

Monthly survey according to Regulation 692/2011.

Sampled units are establishments, the sample varies from 9,000 units in winter to 11,000 units in summer.

Collects information about travellers and overnight stays, bedrooms, staff and prices.

There are two questionnaires: week-long and month-long.

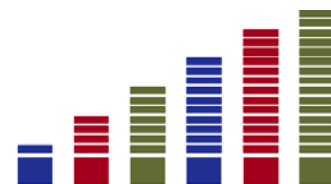
Both can be replaced by an XML file.

```
<xs:element name="N_DAY" type="N_DAYType" />
<xs:element name="ARRIVALS">
  <xs:simpleType>
    <xs:restriction base="xs:unsignedInt">
      <xs:totalDigits value="4" />
    </xs:restriction>
  </xs:simpleType>
</xs:element>
<xs:element name="DEPARTURES">
  <xs:simpleType>
    <xs:restriction base="xs:unsignedInt">
      <xs:totalDigits value="4" />
    </xs:restriction>
  </xs:simpleType>
</xs:element>
<xs:element name="OVERNIGHT_STAYS">
  <xs:simpleType>
    <xs:restriction base="xs:unsignedInt">
      <xs:totalDigits value="4" />
    </xs:restriction>
  </xs:simpleType>
</xs:element>
```

Number of guests, overnight stays and rooms occupied during the reference month

Please, indicate the total number of guests, overnight stays and rooms occupied registered at your establishment during the reference month.

	Guests	Overnight stays	Rooms occupied
Total			



Administrative Register and the HOS

Spanish Autonomous Communities, NUTS-2, send periodically to INE the Administrative Register of Tourism Boards with each establishment's capacity.

$$\widehat{Y}_h^{rat} = \frac{P_{U_{F,h}}^{reg.open}}{\widehat{P}_{U_h}^{HT^\circ}} \cdot \widehat{Y}_{U_h}^{HT^\circ}$$

From the **week-long** questionnaire:

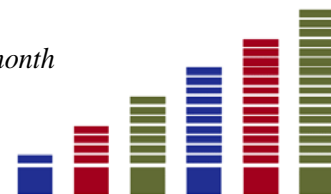
Bed-places $p_k^\circ = \delta_k^{resp.week} \cdot p_k$

Variables of analysis (overnight stays, travelers,...) $y_h^\circ = \delta_k^{fld.open} \cdot \delta_k^{resp.week} \cdot \left(\frac{D}{7}\right) \cdot y_k^{week}$

From the **month-long** questionnaire:

Bed-places $p_k^\circ = \delta_k^{resp.month} \cdot p_k$

Variables of analysis (overnight stays, travelers,...) $y_h^\circ = \delta_k^{fld.open} \cdot \delta_k^{resp.month} \cdot y_k^{month}$



Electronic Data Reporting

XML file

```
- <RESIDENCIA>  
  <ID_PAIS>UKR</ID_PAIS>  
- <MOVIMIENTO>  
  <N_DIA>24</N_DIA>  
  <ENTRADAS>1</ENTRADAS>  
  <SALIDAS>0</SALIDAS>  
  <PERNOCTACIONES>1</PERNOCTACIONES>  
</MOVIMIENTO>  
- <MOVIMIENTO>  
  <N_DIA>25</N_DIA>  
  <ENTRADAS>0</ENTRADAS>  
  <SALIDAS>1</SALIDAS>  
  <PERNOCTACIONES>0</PERNOCTACIONES>  
</MOVIMIENTO>  
</RESIDENCIA>
```





Place of residence

European Union

SPAIN

2. Germany
3. Austria
4. Belgium
5. Bulgaria
6. Cyprus
7. Croatia
8. Denmark
9. Slovakia
10. Slovenia
11. Estonia
12. Finland
13. France
14. Greece
15. Hungary
16. Ireland
17. Italy
18. Latvia
19. Lithuania
20. Luxembourg
21. Malta
22. Netherlands
23. Poland
24. Portugal
25. United Kingdom
26. Czech Republic
27. Romania
28. Sweden

REST OF COUNTRIES

29. Iceland
30. Liechtenstein
31. Norway
32. Russia
33. Switzerland
34. Turkey
35. Ukraine
36. Rest of Europe
37. Argentina
38. Brazil
39. Canada
40. United States
41. Mexico
42. Rest of America
43. South Africa
44. Rest of African countries
45. Japan
46. Republic of China
47. Republic of South Korea
48. Rest of Asia
49. Australia
50. Rest of the world

49 countries

Day 1 Day 2 Day 3 Day 4 Day 5 Day 6 Day 7

- <RESIDENCIA>

<ID_PAIS>UKR</ID_PAIS>

- <MOVIMIENTO>

<N_DIA>24</N_DIA>

<ENTRADAS>1</ENTRADAS>

<SALIDAS>0</SALIDAS>

<PERNOCTACIONES>1</PERNOCTACIONES>

</MOVIMIENTO>

- <MOVIMIENTO>

<N_DIA>25</N_DIA>

<ENTRADAS>0</ENTRADAS>

<SALIDAS>1</SALIDAS>

<PERNOCTACIONES>0</PERNOCTACIONES>

</MOVIMIENTO>

- </RESIDENCIA>

<ID_PAIS>GBR</ID_PAIS>

- <MOVIMIENTO>

<N_DIA>04</N_DIA>

<ENTRADAS>1</ENTRADAS>

<SALIDAS>0</SALIDAS>

<PERNOCTACIONES>1</PERNOCTACIONES>

</MOVIMIENTO>

- <MOVIMIENTO>

<N_DIA>05</N_DIA>

<ENTRADAS>0</ENTRADAS>

<SALIDAS>0</SALIDAS>

<PERNOCTACIONES>1</PERNOCTACIONES>

</MOVIMIENTO>

- <MOVIMIENTO>

<N_DIA>06</N_DIA>

<ENTRADAS>0</ENTRADAS>

<SALIDAS>1</SALIDAS>

<PERNOCTACIONES>0</PERNOCTACIONES>

</MOVIMIENTO>

- <MOVIMIENTO>

<N_DIA>07</N_DIA>

<ENTRADAS>1</ENTRADAS>

<SALIDAS>0</SALIDAS>

<PERNOCTACIONES>1</PERNOCTACIONES>

</MOVIMIENTO>

Every day

250 countries, dependent territories and special areas of geographical interest

- <ISO_3166_1_ALPHA_3_PAIS>

<ID_PAIS>ALB</ID_PAIS>

<Nom_PAIS>Albania</Nom_PAIS>

- </ISO_3166_1_ALPHA_3_PAIS>

- <ISO_3166_1_ALPHA_3_PAIS>

<ID_PAIS>DEU</ID_PAIS>

<Nom_PAIS>Alemania</Nom_PAIS>

- </ISO_3166_1_ALPHA_3_PAIS>

- <ISO_3166_1_ALPHA_3_PAIS>

<ID_PAIS>AND</ID_PAIS>

<Nom_PAIS>Andorra</Nom_PAIS>

- </ISO_3166_1_ALPHA_3_PAIS>

- <ISO_3166_1_ALPHA_3_PAIS>

<ID_PAIS>AGO</ID_PAIS>

<Nom_PAIS>Angola</Nom_PAIS>

- </ISO_3166_1_ALPHA_3_PAIS>

- <ISO_3166_1_ALPHA_3_PAIS>

<ID_PAIS>AIA</ID_PAIS>

<Nom_PAIS>Anguila</Nom_PAIS>

- </ISO_3166_1_ALPHA_3_PAIS>

- <ISO_3166_1_ALPHA_3_PAIS>

<ID_PAIS>ATG</ID_PAIS>

<Nom_PAIS>Antigua y Barbuda</Nom_PAIS>

- </ISO_3166_1_ALPHA_3_PAIS>

- <ISO_3166_1_ALPHA_3_PAIS>

<ID_PAIS>ANT</ID_PAIS>

<Nom_PAIS>Antillas Neerlandesas</Nom_PAIS>

- </ISO_3166_1_ALPHA_3_PAIS>

- <ISO_3166_1_ALPHA_3_PAIS>

<ID_PAIS>ATA</ID_PAIS>

<Nom_PAIS>Antártida</Nom_PAIS>

- </ISO_3166_1_ALPHA_3_PAIS>

- <ISO_3166_1_ALPHA_3_PAIS>

<ID_PAIS>SAU</ID_PAIS>

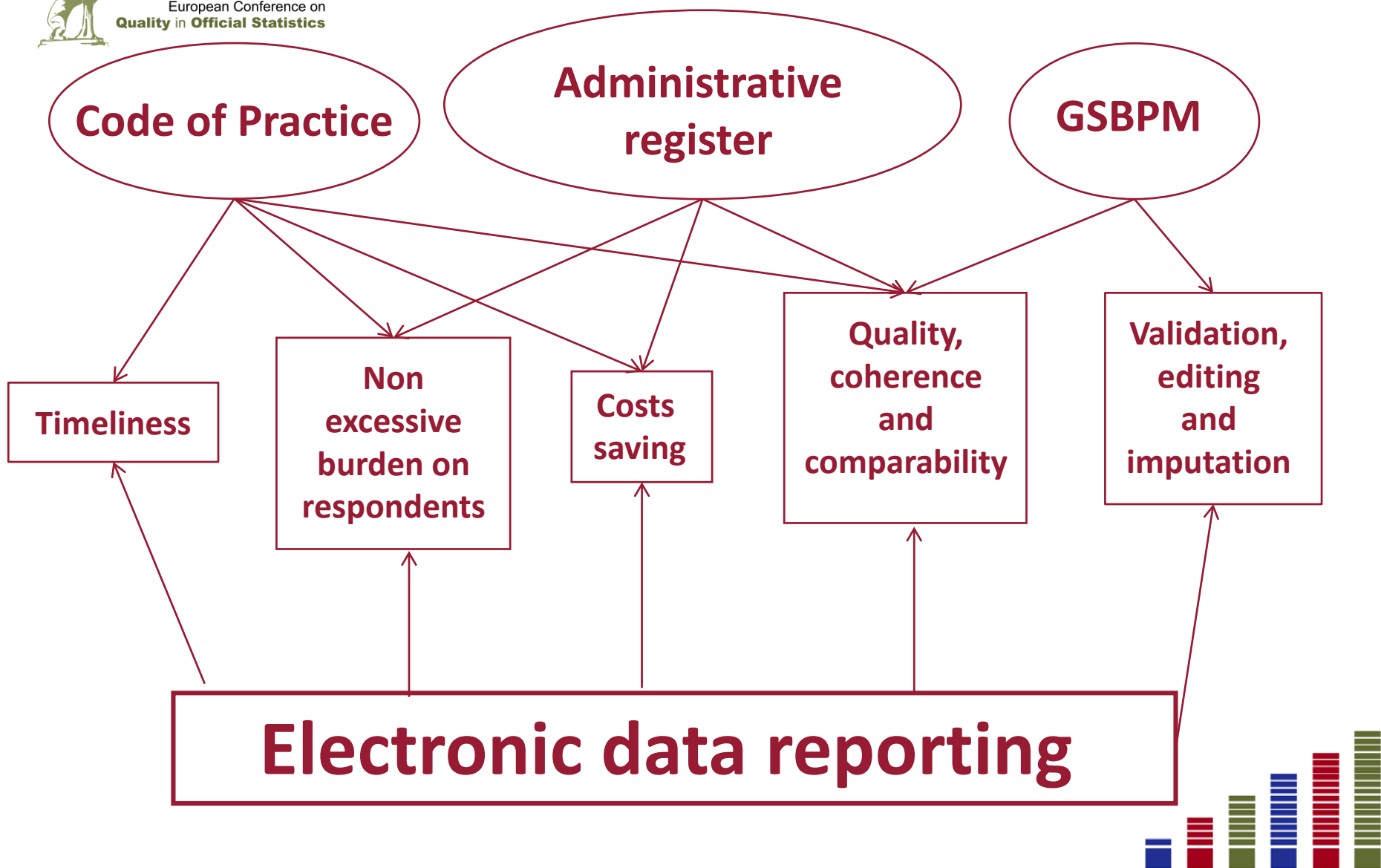
<Nom_PAIS>Arabia Saudita</Nom_PAIS>

- </ISO_3166_1_ALPHA_3_PAIS>

XML file

Questionnaire

Conclusions



Thank you very much
for your attention

