

Metadata management systems, living spirals or flat line?

24 – Metadata Systems

2016/06/02 14:30 – 16:00

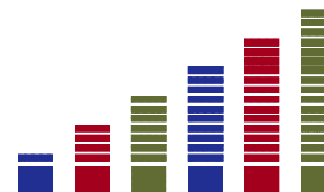
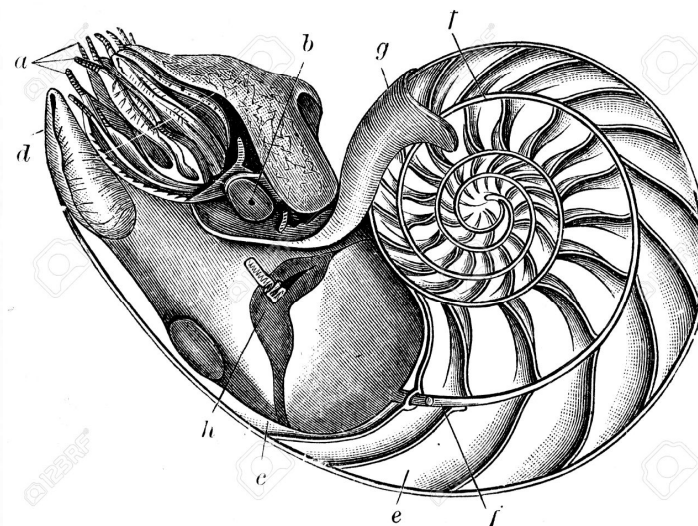
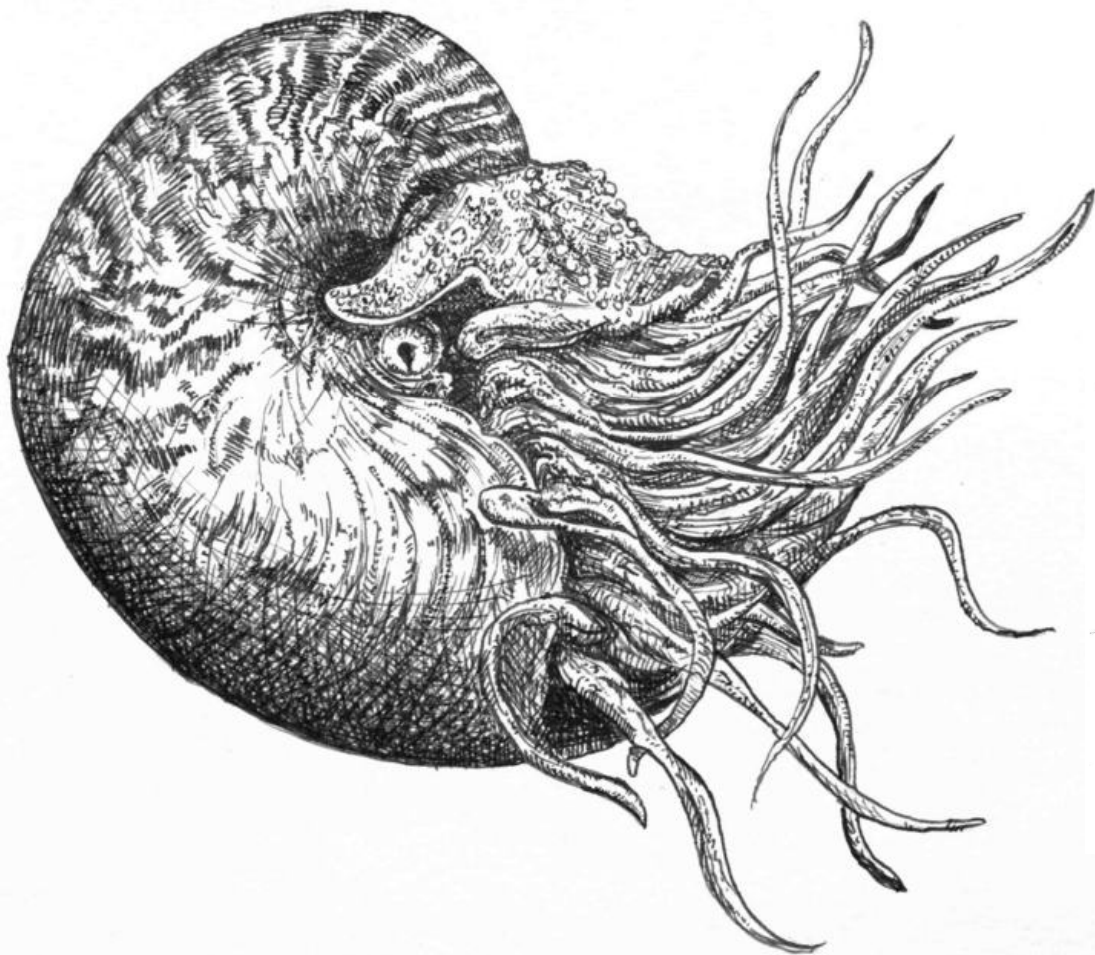
António Portugal, antonio.portugal@ine.pt,

Susana Nunes, susana.nunes@ine.pt,

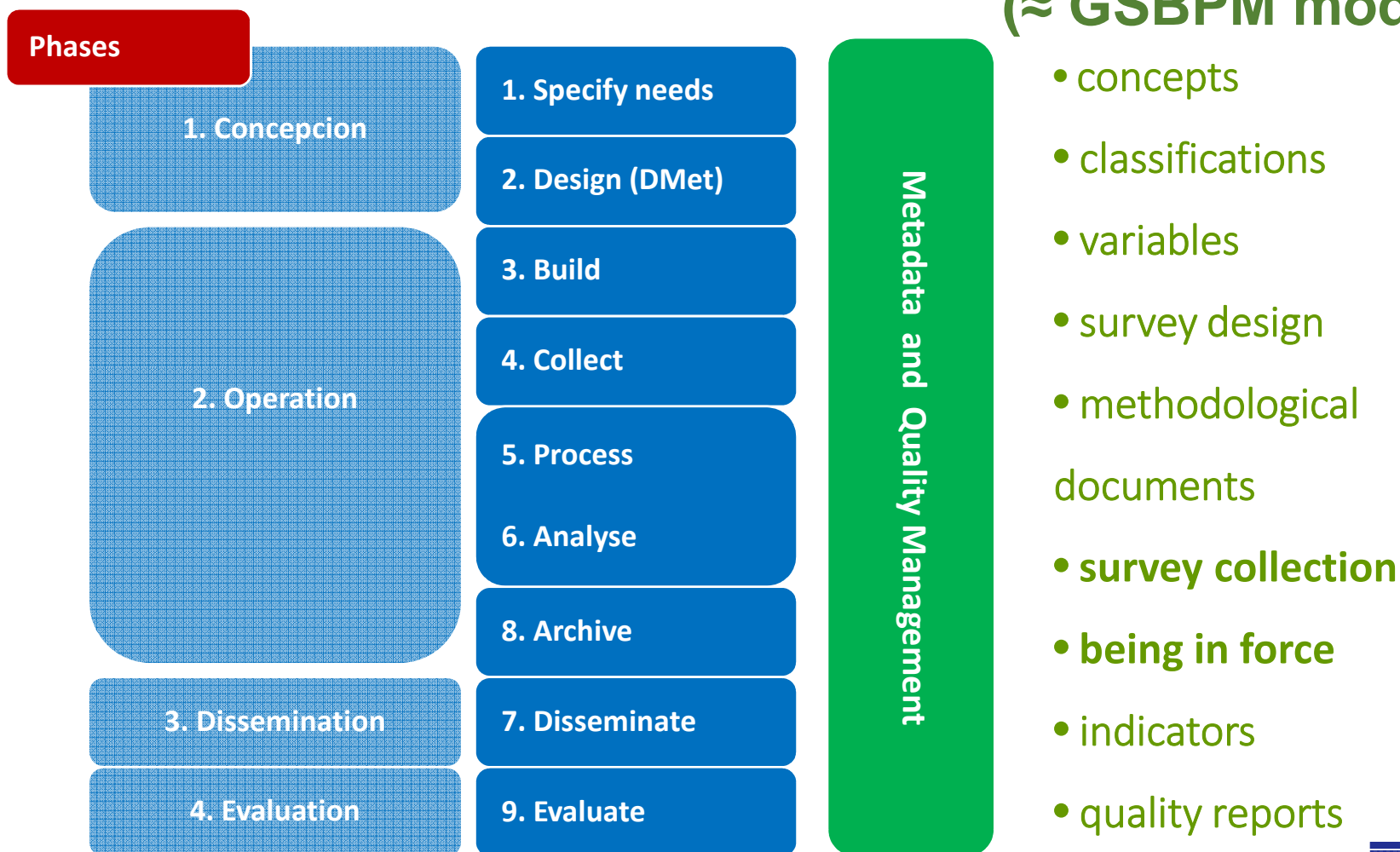
João Poças, joao.pocas@ine.pt

Statistics Portugal, Portugal

Nautilus - one of the oldest animals still in existence

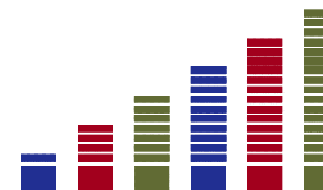
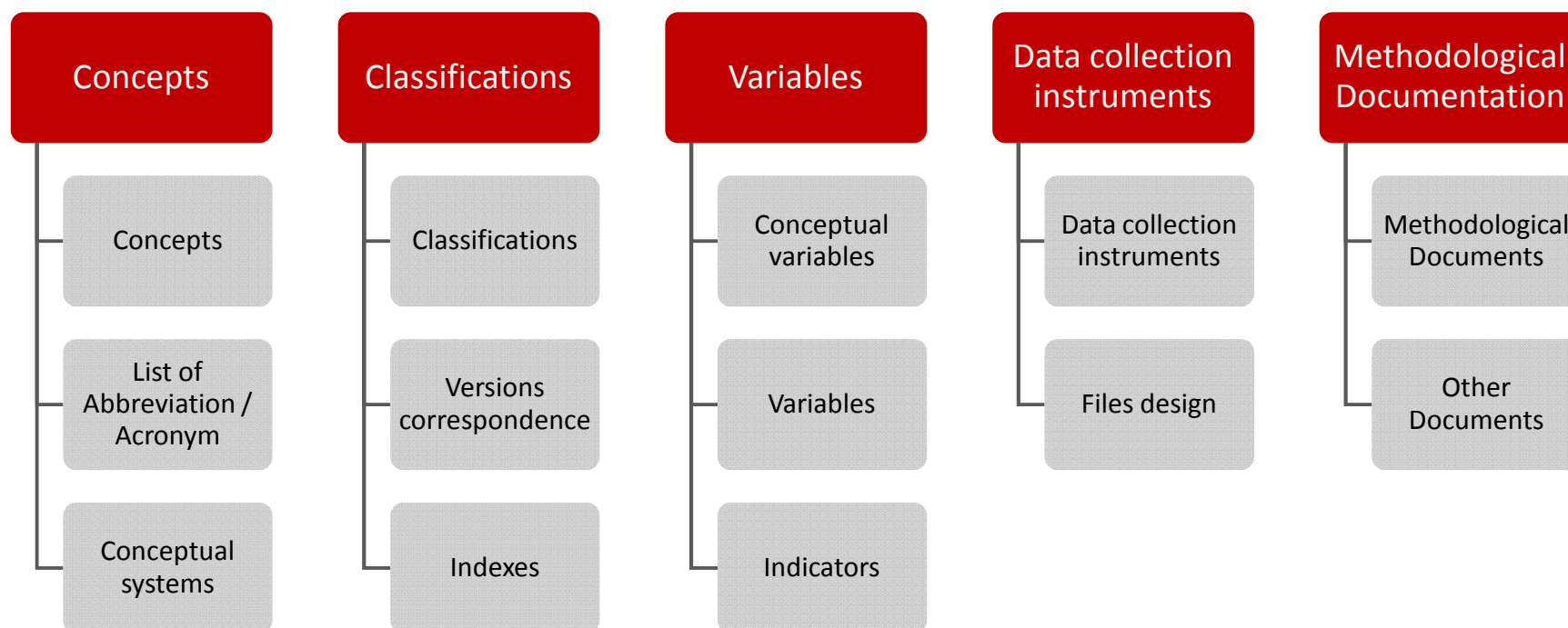


Metadata and the Statistical Productive Process Model Handbook (≈ GSBPM model)



Integrated Metadata System (SMI)

- Integrated system for all modules/components:



SMI follow up

Before 2013

Different systems
coexistence

Lack of coherence

...

2013-2014

Migration of
contents

New contents

New adaptations to
the system
(certification process)

Ongoing

Contents
harmonization

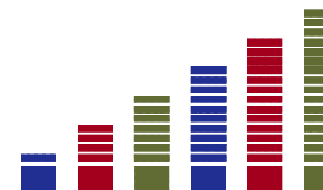
New contents

Implementing
changes into the
Certification process

Next

Quality report
integration

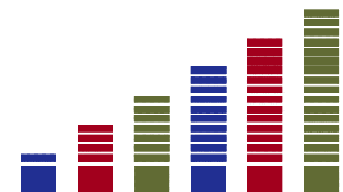
Propose its official
use in NSS



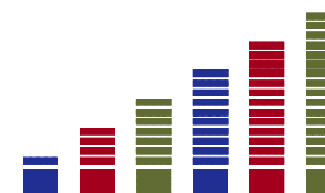
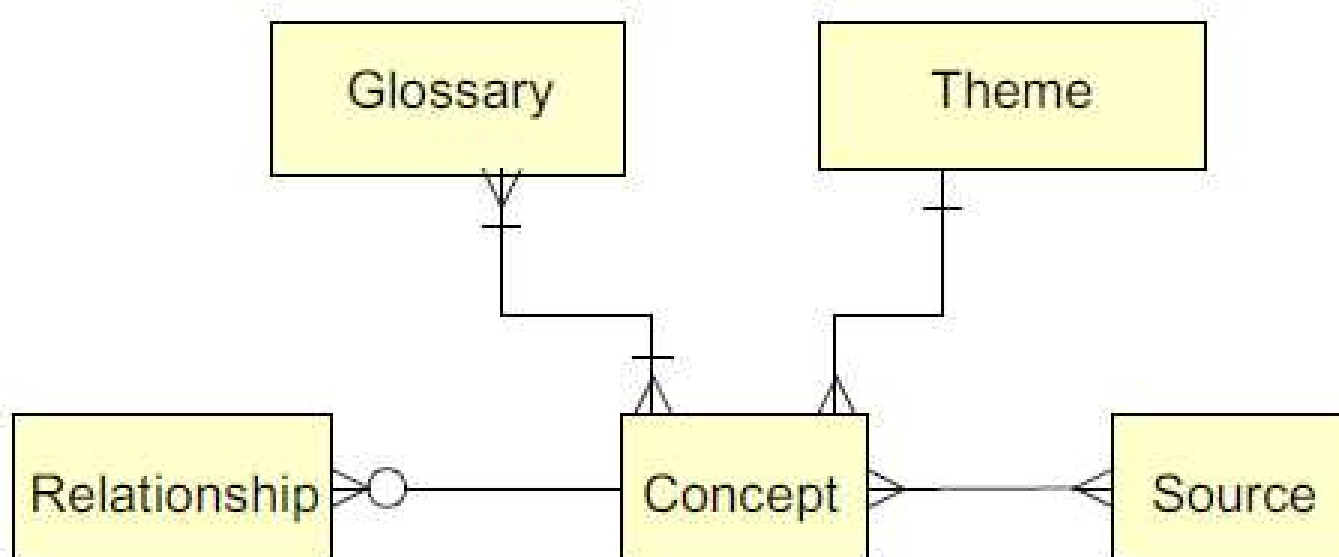
SMI Benefits



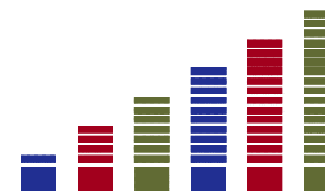
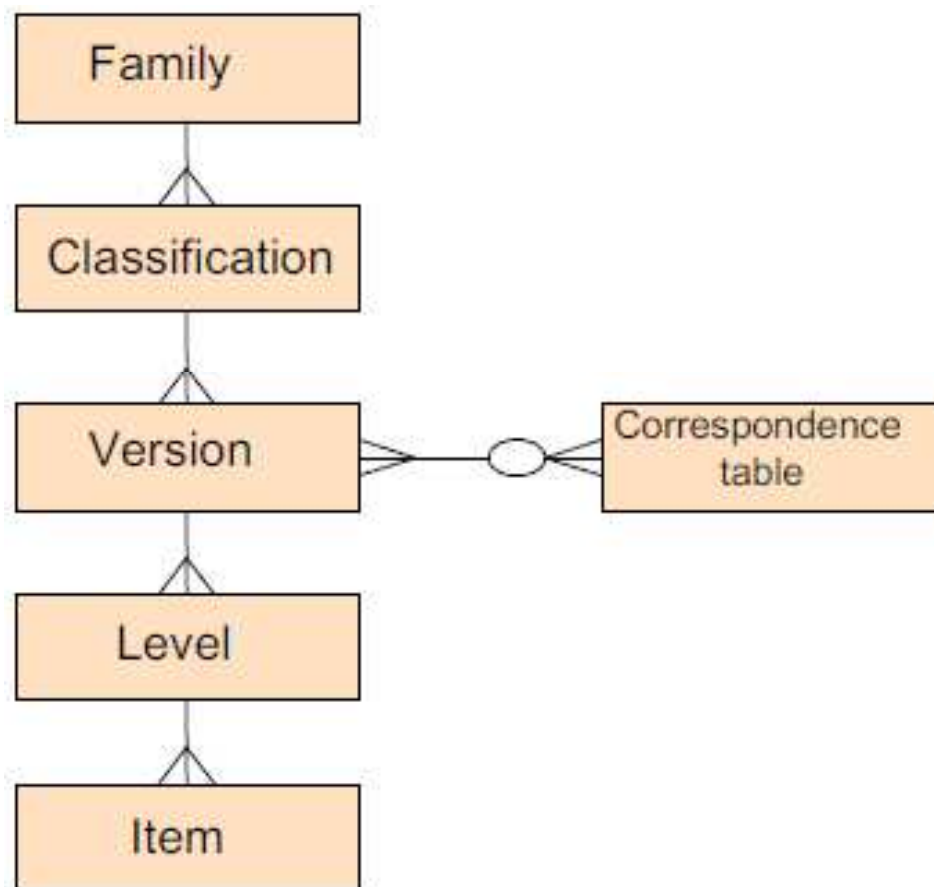
- Support statistical activity
- Reusability, consistency and harmonization



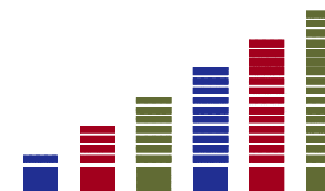
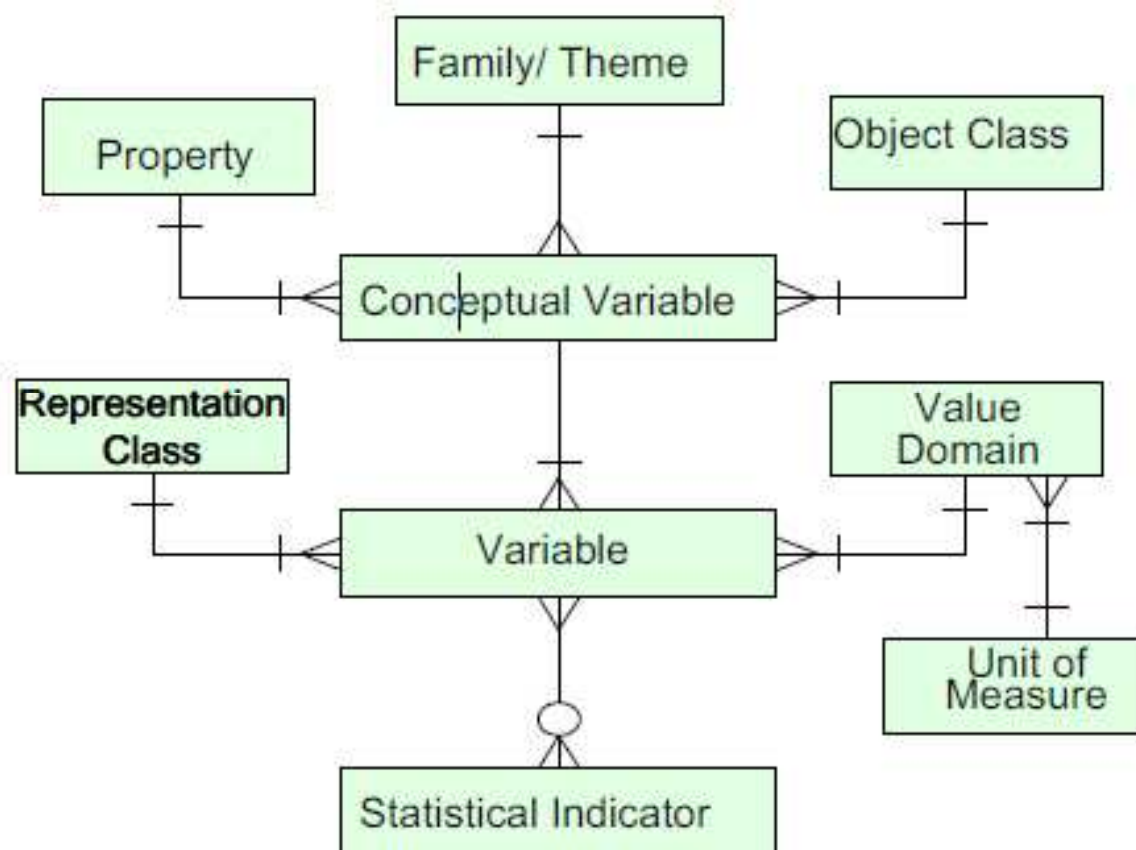
Integrated Metadata System Concepts



Integrated Metadata System Classifications

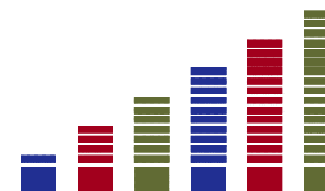
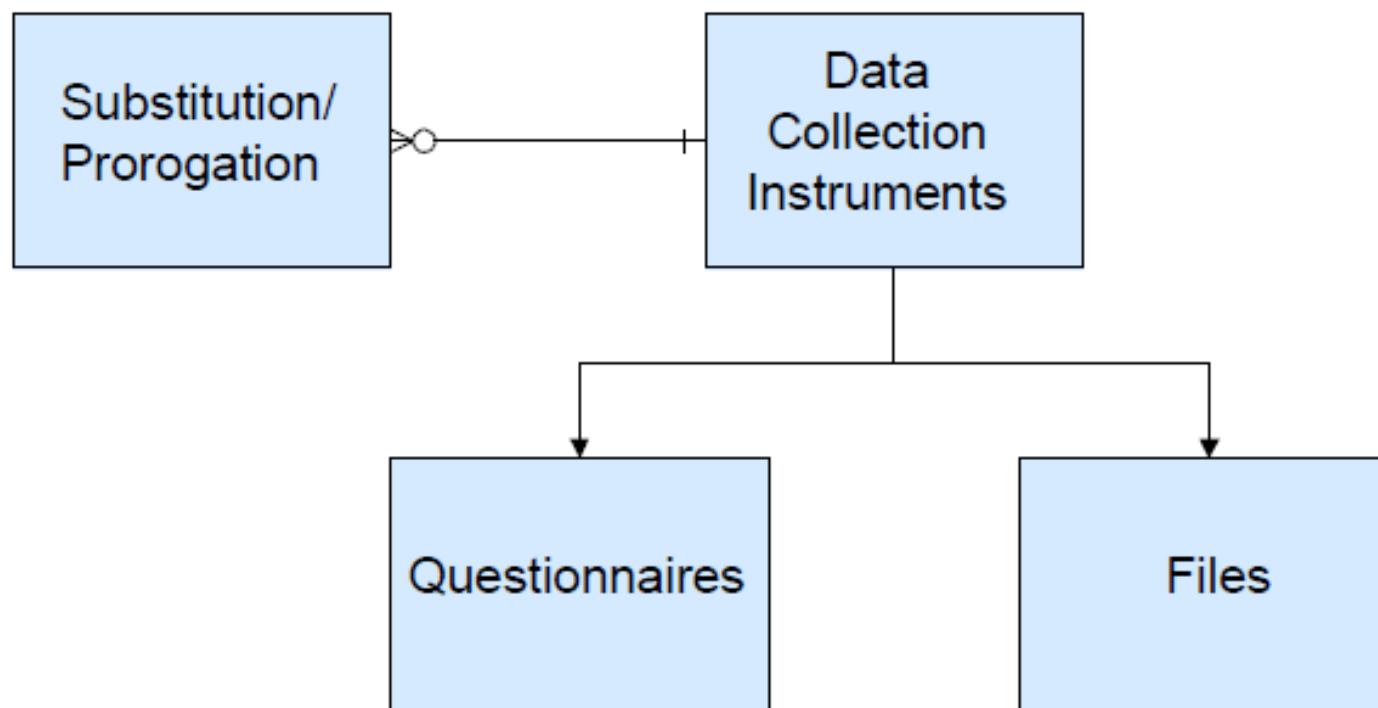


Integrated Metadata System Variables



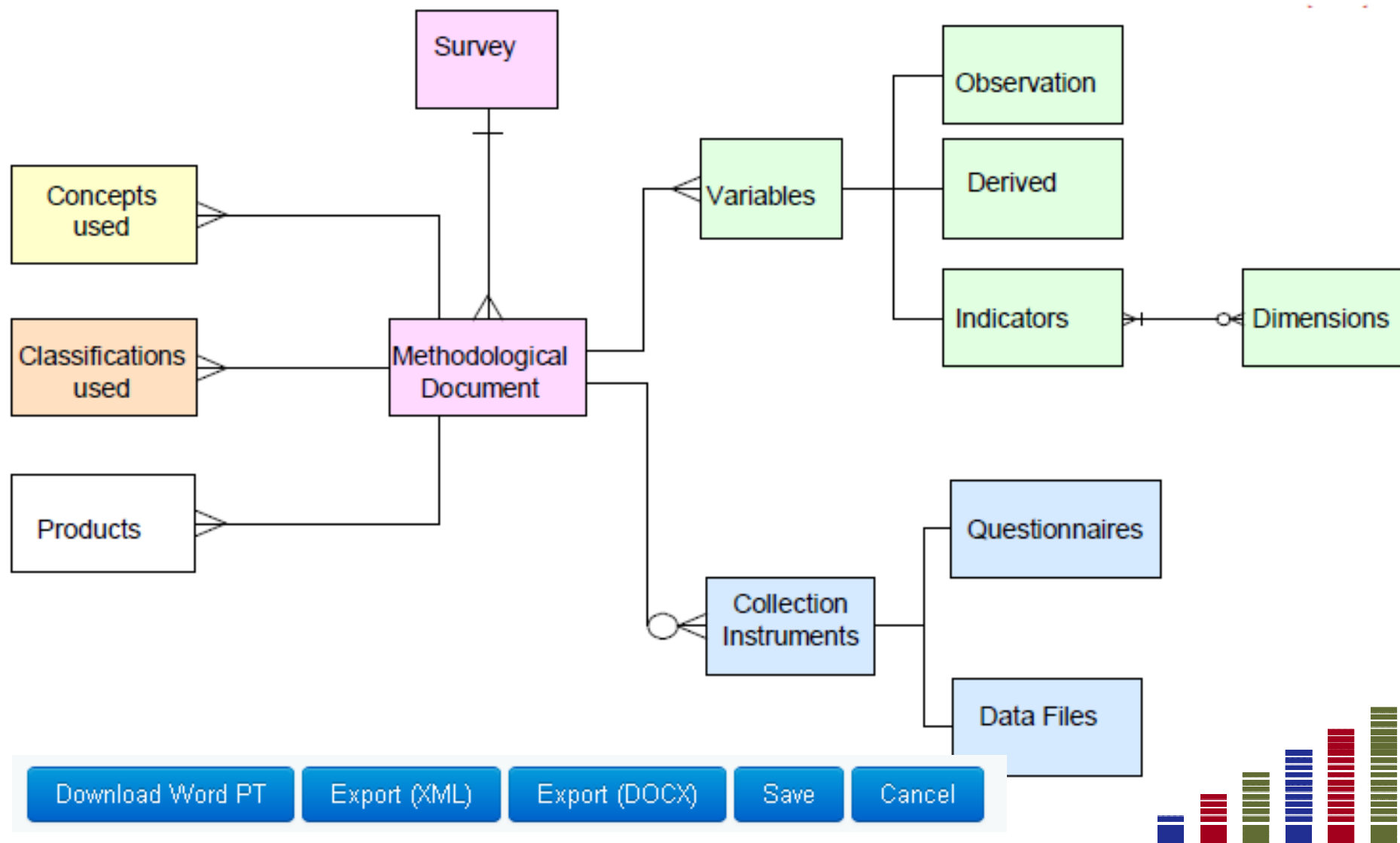
Integrated Metadata System

Data collection instruments



Integrated Metadata System

Methodological Document



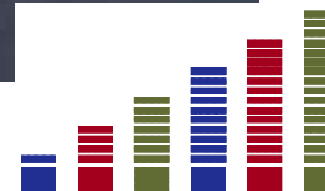
SMI challenges

Impact

Words

Access

Promote



Conclusions

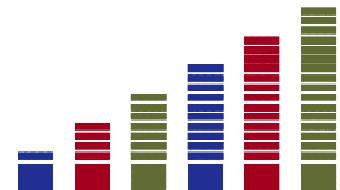
Evolution

discover / reuse / adapt / new version / new object

Information in metadata management systems
can't be carved in stone.

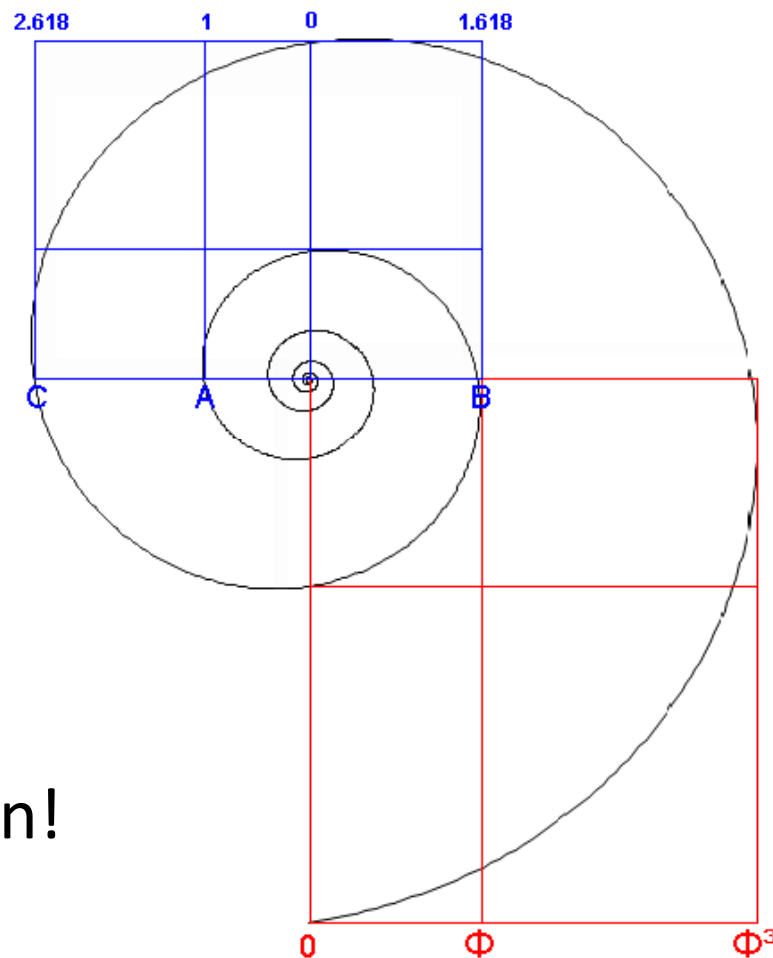
Integration

The user friendliness and users recognition
as an added value to the process
are essential to keep the system alive.



Metadata Management Systems

Living spirals!



Questions?

Thank You For Your Attention!

antonio.portugal@ine.pt

