

Redeveloping the Norwegian Household Budget Survey

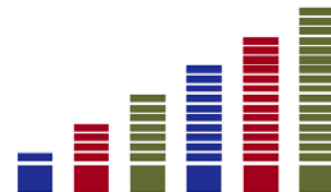
Past | Present | Future

Session 1
1st June

Sverre Amdam, Statistics Norway
Kristin Egge-Hoveid, Statistics Norway

Past Traditional Household Budget Survey

- Paper diaries
- Personal interview
- Manual coding
- High costs
- Quality challenges



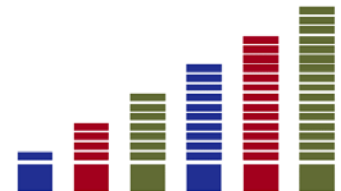
Present Digital data collection – mix mode

Paper diaries/interview replaced by:

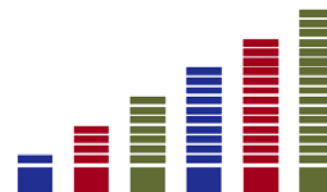
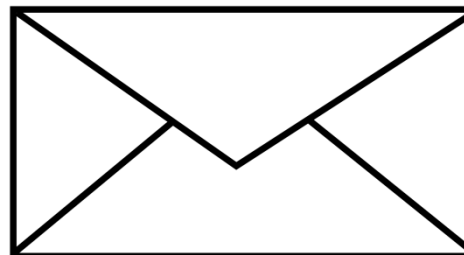
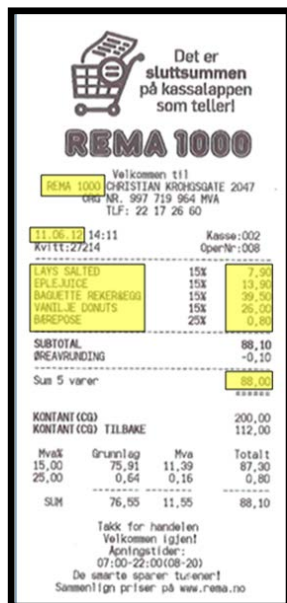
1. Paper receipt delievery
covering groceries

2. Web diary
covering all other expences

3. Web questionnaire




1. Paper receipt delivery covering groceries



2. Web diary covering all other expences

al-forbruk-app-u1:8080/v x

al-forbruk-app-u1:8080/webjournalfront/#

 **Statistisk sentralbyrå**
Statistics Norway

Logget inn som Bruker1 [Logg ut](#)
FORBRUKSUNDERSØKELSEN 2017

[← Tilbake til oversikten](#) [Trenger du hjelp?](#)

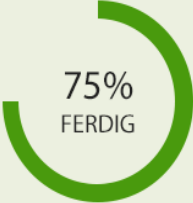
søndag 3. januar ▼

Detaljert registrering

Når du skriver i feltet under vil vi gi forslag til beskrivelser. Vennligst velg ett av forslagene om du finner en som passer, eller skriv en kort beskrivelse uten å velge.

Hva ble det betalt for? Beløp Valuta

ipad		NOK ▼	Legg til
iPad	PC-er		
Bytte av glass på iPad/nett...	Reparasjon av audiovisuelt utstyr, fotoutstyr, informasjonsbeha...		
iPad	PC-er		
Finner du ikke et godt forslag? Du kan gjerne bruke en egen kort beskrivelse.			


75%
FERDIG


DETTE GJENSTÅR

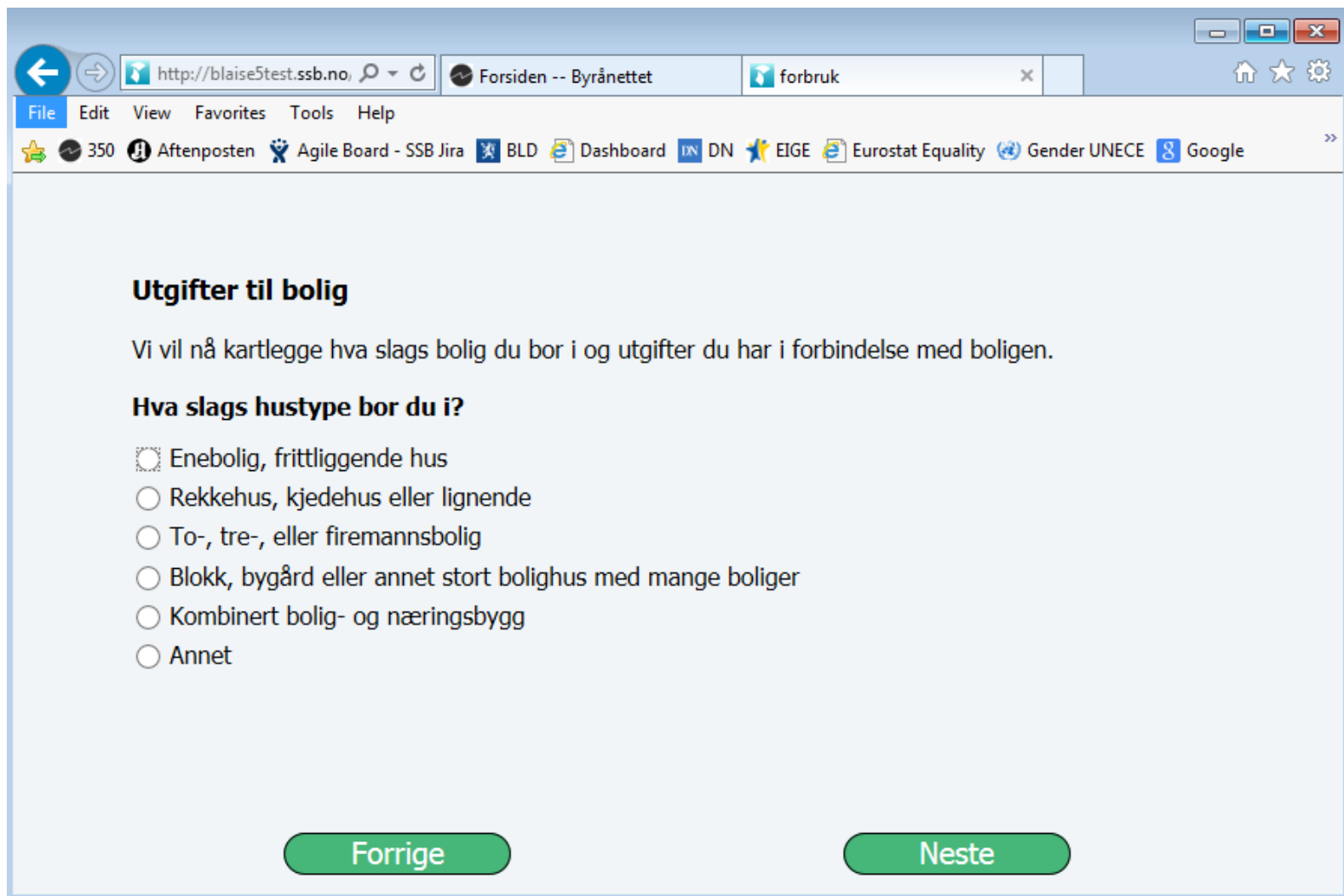
[Fyll ut spørreskjema](#)

[3 av 14 dager utgiftsregistrering](#)

[Postlegg kvitteringene](#)

MITT FORBRUK





http://blaise5test.ssb.no

Forsiden -- Byrånettet

forbruk

File Edit View Favorites Tools Help

350 Aftenposten Agile Board - SSB Jira BLD Dashboard DN DN EIGE Eurostat Equality Gender UNECE Google

Utgifter til bolig

Vi vil nå kartlegge hva slags bolig du bor i og utgifter du har i forbindelse med boligen.

Hva slags hustype bor du i?

- Enebolig, frittliggende hus
- Rekkehus, kjedehus eller lignende
- To-, tre-, eller firemannsbolig
- Blokk, bygård eller annet stort bolighus med mange boliger
- Kombinert bolig- og næringsbygg
- Annet

Forrige Neste



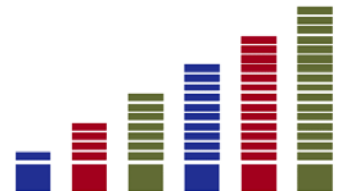
Implications

- Cost

- ✓ Reduce interview costs
- ✓ From manual to automated coding

- Quality

- ✓ More accurate coding
- ✓ User friendly instruments
- ✓ Response rate
- ✓ Item-Non response



Future Digital transaction data

Principal sources:

- **Bank transaction data**
 - Banks and/or payment processors
 - + Link to individual
 - - Insufficient detail level
- **Bong data (receipt data)**
 - Sales terminal systems
 - + Sufficient detail level
 - - No link to individual (few exceptions)

Utilizing the sources:

- **Bank transaction data**
 - Persons (respondents) detailing transactions in a survey
 - Private Financial management solutions (PFM)
- **Bong data**
 - Grocery Retail Chains (GRCs')
 - As auxiliary data; a mode to be mixed; replacement of survey data

