

Non-hotel Tourist Accommodation Occupancy Survey January 2026. Provisional data

Main results

- Overnight stays in non-hotel tourist accommodation increased by 3.6% in January compared to the same month in 2025.
- Overnight stays in apartments increased by 2.4%, those in campsites by 3.7%, rural tourism by 24.0% compared to the same month in 2025. On the contrary, hostel stays fell by 5.9%.
- The Tourist Apartment Price Index (IPAP) declined by 1.6% in January compared to the same month in 2025. The Tourist Campsite Price Index (TCPI) increased by 5.6% and the Rural Tourism Index (RTAPI) increased by 1.4%.

More information

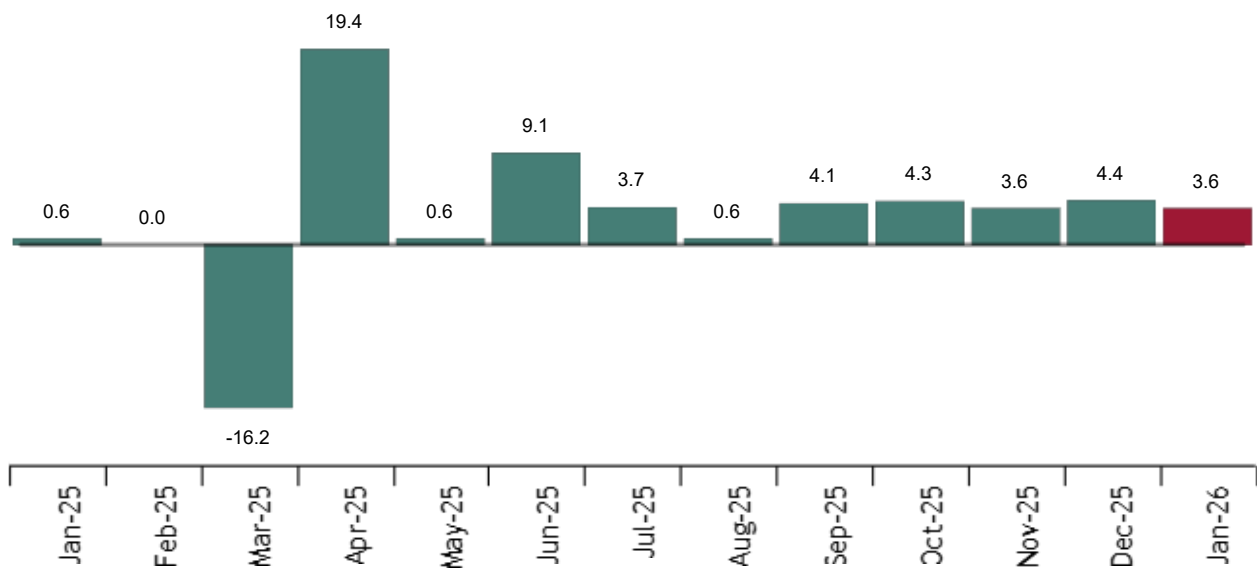
- [Tables annex](#) (includes information on Autonomous Communities, provinces, tourist areas and sites)
- Detailed results of [apartments](#), [campsites](#), [rural tourism](#) and [hostels](#)
- [Main indicators by accommodation type](#) / [Infographic: tourism indicators](#)
- Price indices of [apartments](#), [campsites](#) and [rural tourism](#)

Overnight stays in non-hotel tourist accommodation (apartments, campsites, rural tourism accommodation and hostels) exceeded 6.6 million in January, with an increase of 3.6% compared to the same month last year.

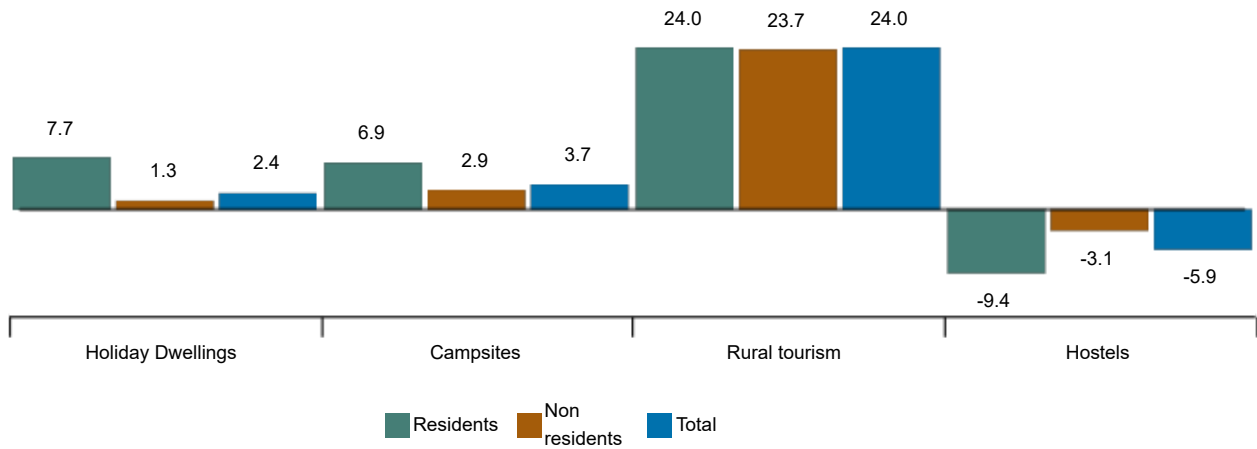
Overnight stays by residents increased by 9.3% and those by non-residents by 1.9%. The average stay was 5.1 overnight stays per traveller.

Annual variation rate of overnight stays in Non-hotel tourist accommodation

Percentage



Annual variation rates of overnight stays in non-hotel Non-hotel tourist accommodation. January 2026
Percentage



Apartments

Overnight stays in tourist apartments increased by 2.4% in January. Stays by residents rose by 7.7% and non-residents by 1.3%.

The average stay decreased by 5.3% to 5.8 overnight stays per traveller.

In January, 34.0% of the bed-places on offer were occupied, 5.3% more than in the same month in 2025. The occupancy rate by bed-places at the weekend was 37.2%, 7.0% more.

Non-resident travellers accounted for 80.7% of overnight stays. The United Kingdom was the main market of origin, with 26.6% of the total.

Canarias was the preferred destination for apartments, with more than 2.4 million overnight stays and a decrease of 4.6% compared to January 2025. It also recorded the highest occupancy rate, with 87.3% of the apartments offered.

By tourist areas, the island of Gran Canaria was the preferred destination, with more than 800 thousand overnight stays. The island of Lanzarote had the highest occupancy rate, with 90.7%. The tourist locations with the greatest number of overnight stays were San Bartolomé de Tirajana, Mogán and Arona.

Campsites

Overnight stays in campsites increased by 3.7% in January compared with the same month in 2025. Resident overnight stays grew by 6.9%, and those of non-residents by 2.9%.

In January, 46.1% of the available sites were occupied, an increase of 1.0% in terms of the annual rate. The weekend occupancy rate reached 45.2%, a fall of 2.8%. Non-resident travellers accounted for 80.1% of overnight stays. Germany was the main market of origin, with 40.4% of the total.

Comunitat Valenciana was the preferred destination for campsites, with more than 700 thousand overnight stays, and an increase of 1.3% in the annual rate. Región de Murcia achieved the highest occupancy rate, with 77.1% of campsites offered.

By tourist areas, the Costa Blanca was the preferred destination, with more than 300 thousand overnight stays. The Costa Cálida had the highest occupancy rate, with 88.4%. The tourist resorts with the most overnight stays were Benidorm, Mazarrón and Vélez-Málaga.

Current press release at: <https://www.ine.es/dyngs/Prensa/en/EOAT0126.htm>

Rural tourism accommodation

Overnight stays in rural tourist accommodation rose by 24.0% in January compared with the same month in 2025. Resident overnight stays grew by 24.0%, and those of non-residents by 23.7%.

10.7% of the places were occupied, 14.7% more than in January 2025. The weekend occupancy rate stood at 19.0%, with an annual increase of 4.5%.

Castilla y León was the preferred destination, with more than 69,000 overnight stays, 22.0% more than in January 2025. Canarias achieved the highest occupancy rate, with 41.6%.

By tourist area, Pirineus was the preferred destination, with more than 29 thousand overnight stays. The island of La Palma reached the highest occupancy rate, with 46.0% of the places offered.

Hostels

Overnight stays in hostels decreased by 5.9% in January. Spanish resident overnight stays fell by 9.4%, and those of non-residents by 3.1%.

17.6% of the bed-places are occupied, 14.6% fewer than in January 2025. The weekend occupancy rate stood at 18.2%, with a year-on-year decrease of 27.4%.

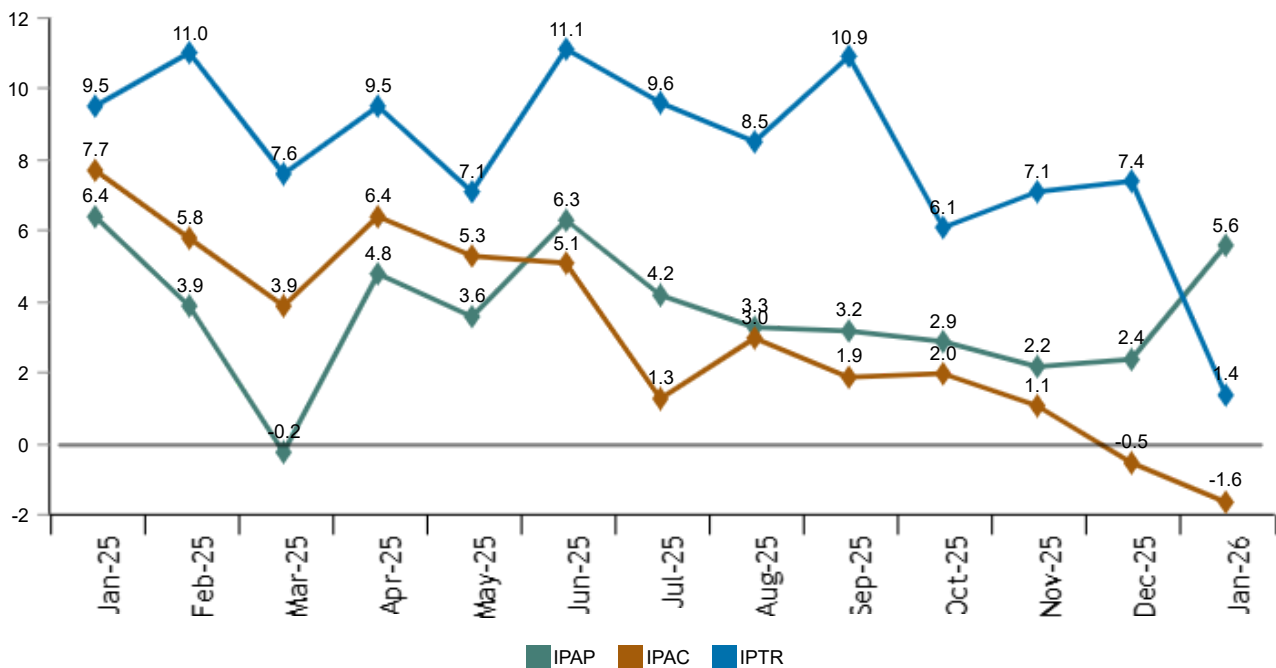
Comunidad de Madrid was the preferred destination, with more than 106 thousand overnight stays. Canarias achieved the highest occupancy rate, with 63.7% of the bed-places offered.

Price indices

The Tourist Apartment Price Index (IPAP) declined by 1.6% in January compared to the same month in 2025. The Tourist Campsite Price Index (TCPI) increased by 5.6% and the Rural Tourism Index (RTAPI) increased by 1.4%.

Price index. Annual variation rates

Percentage



Current press release at: <https://www.ine.es/dyngs/Prensa/en/EOAT0126.htm>

Data revisions and updates

The data of this press release are provisional and will be reviewed when the data for the same period next year are published. All the results of this operation are available at: [Holiday Dwelling Occupancy Survey](#), [Campsite Occupancy Survey](#), [Rural Tourism Accommodation Occupancy Survey](#), [Hostels Occupancy Survey](#), [Holiday Dwelling Price Index](#), [Campsite Price Index](#) and [Rural Tourism Accommodation Price Index](#).

Methodological note

The **Holiday Dwelling Occupancy Survey** makes it possible to ascertain a series of variables of this type of accommodation within the tourist sector, from the point of view of both supply and demand.

The **Holiday Dwelling Price Index** measures the monthly evolution of the prices offered by these establishments to their clients.

More information on the [methodology](#) and the [standardised methodological report](#).

The **Campsite Occupancy Survey** makes it possible to ascertain a series of variables of this type of accommodation within the tourist sector, from the point of view of both supply and demand.

The **Campsite Price Index** measures the monthly evolution of the prices offered by these establishments to their clients.

More information on the [methodology](#) and the [standardised methodological report](#).

The **Rural Tourism Accommodation Occupancy Survey** makes it possible to ascertain a series of variables of this type of accommodation within the tourist sector, from the point of view of both supply and demand.

The **Rural Tourism Accommodation Price Index** measures the monthly evolution of the prices offered by these establishments to their clients.

More information on the [methodology](#) and the [standardised methodological report](#).

The **Hostels Occupancy Survey** makes it possible to ascertain a series of variables of this type of accommodation within the tourist sector, from the point of view of both supply and demand.

More information on the [methodology](#) and the [standardised methodological report](#).

INE statistics are produced in accordance with the Code of Good Practice for European Statistics. More information on [Quality at INE](#) and [Code of Best Practices](#).

For further information see [INE base](#)

Official INE account on [X](#) @es_ine

All press releases at: www.ine.es/en/prensa/prensa_en.htm

 Press office: (+34) 91 583 93 63 / (+34) 661 944 540 / (+34) 678 168 837 – gprensa@ine.es

 Information area: (+34) 91 583 91 00 – www.ine.es/infoine/?L=1