

Services Sector Activity Indicators (SSAI) December 2025. Provisional data

Main results

- The annual variation of the Market Services Sector turnover index was 4.1% in the calendar and seasonally adjusted series.
- In December, the monthly rate was 0.3% if seasonal and calendar effects are removed.
- For the year 2025 as a whole, the turnover index rose by 4.7% in the seasonally and calendar-adjusted series, and by 4.8% in the original series.

More information

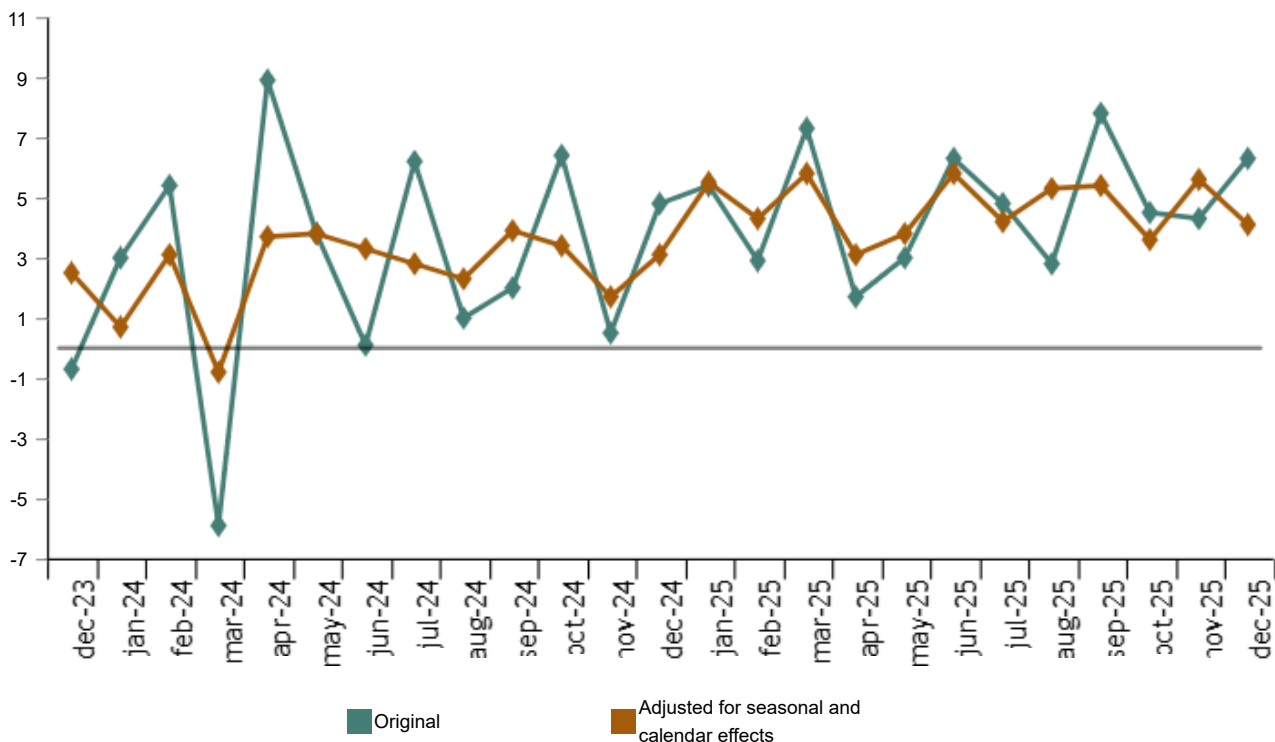
- [Tables annex](#) (includes information by autonomous communities and original and adjusted series by sectors)
- [Detailed results](#) (monthly and annual data)

The general index of the turnover for the Market Services Sector, after adjusting for seasonal and calendar effects, experienced a variation of 4.1% in December compared to the same month of 2024. This rate was 1.5 points lower than that recorded in November.

The original series presented an annual variation of 6.3%, which was two points above that registered in November.

General index of turnover for the Market Services Sector

Annual Rate. Percentage



Annual rates in Turnover index for the Market Services Sector: General and by sector. December 2025

Percentage

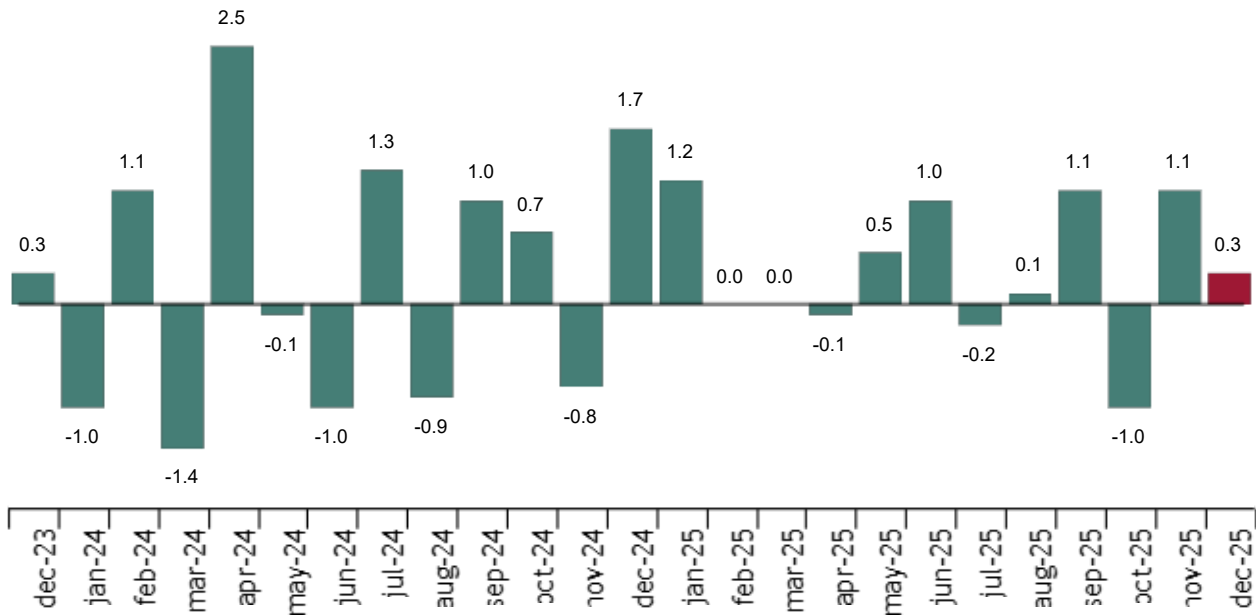
	Original index	Seasonally adjusted index	
	Annual rate (%)	Annual rate (%)	Average year
GENERAL INDEX	6.3	4.1	4.7
1. TRADE	6.0	3.2	4.7
2. OTHER SERVICES	7.0	5.7	4.7

For 2025 as a whole, the turnover index rose by 4.7% in the seasonally and calendar-adjusted series, and by 4.8% in the original series.

Monthly trend in turnover for the Market Services Sector

After adjusting for seasonal and calendar effects, the monthly variation of the general index of turnover for the Market Services Sector between December and November was 0.3%. This rate was eight tenths lower than that observed in November.

General index of the turnover for the Market Services Sector. Seasonally and calendar adjusted
Monthly rate. Percentage



Results by Autonomous Community. Annual variation rates of the turnover index. Original series

All Autonomous Communities increased the Turnover index for the Market Services Sector in December as compared to 2024.

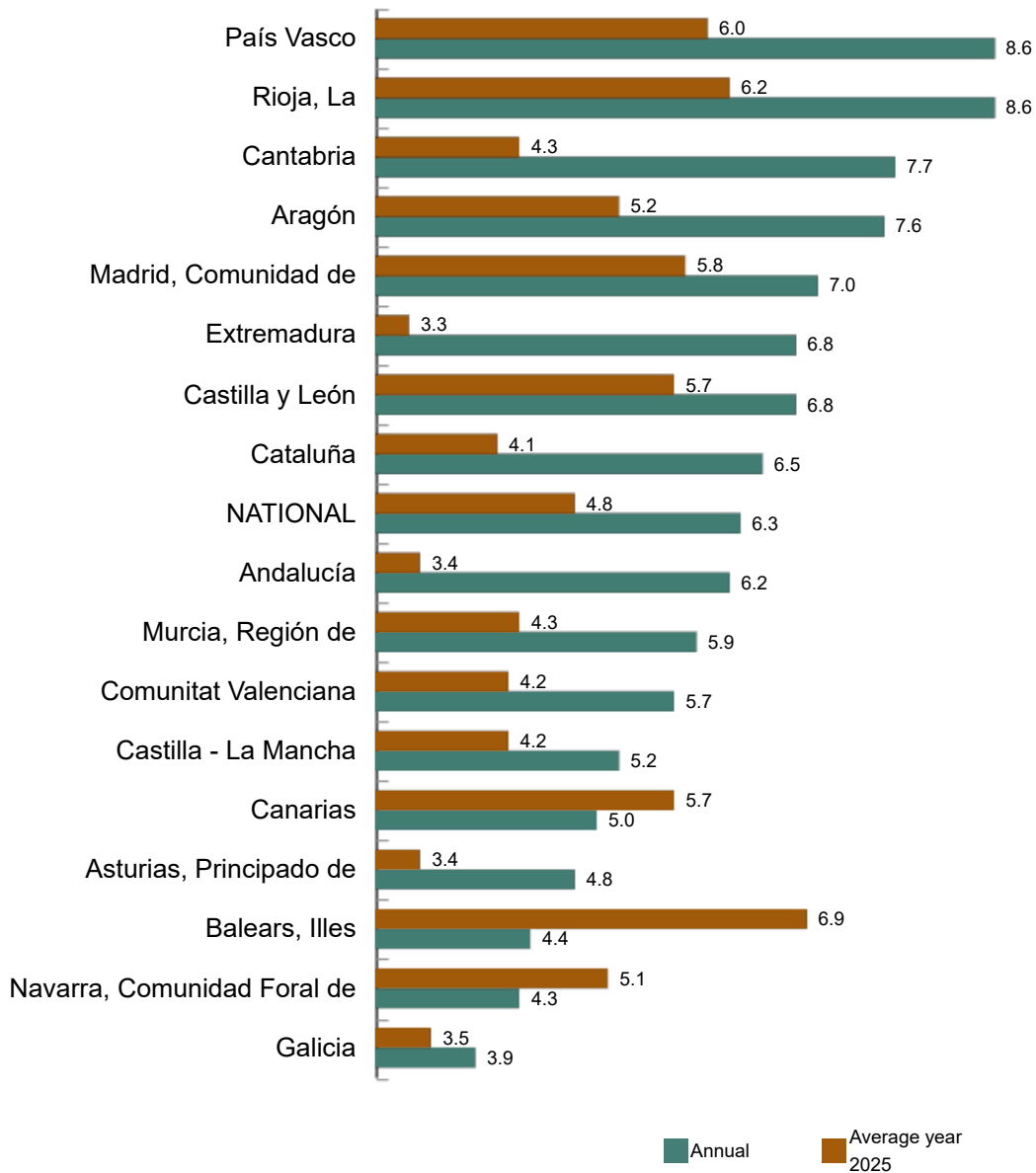
País Vasco (8.6%), La Rioja (8.6%) and Cantabria (7.7%) registered the largest increases. Galicia (3.9%), Comunidad Foral de Navarra (4.3%) e Illes Balears (4.4%) recorded the lowest increases.

For 2025 as a whole, all regions showed positive rates. Illes Balears recorded the highest increase (6.9%).

Current press release at: <https://www.ine.es/dyngs/Prensa/en/IAS1225.htm>

General index of Market Services Sector Turnover by Autonomous Community. December 2025

Annual Rate. Percentage



Current press release at: <https://www.ine.es/dyngs/Prensa/en/IAS1225.htm>

Employment trend

The Employment in the Market Services Sector index increased by 1.0% in December as compared to the same month in 2024. This rate was the same as that registered in November.

For the year 2025 as a whole, employment recorded an average increase of 1.3%.

National Indices of employed personnel by sector. December 2025

	Index	Rate (%)		
		Monthly	Annual	Average year
GENERAL INDEX	108.7	-0.3	1.0	1.3
1.TRADE	107.7	0.1	0.9	1.3
2.OTHER SERVICES	109.3	-0.6	1.1	1.3

Review and update of data

The INE has updated the SSAI data for the last five months. In the case of the series adjusted, the series have been reviewed from the beginning, following the INE standard. All results of this operation are available on [INEBase](#).

In accordance with [Commission Delegated Regulation \(EU\) 2023/137](#), the INE has begun to work on incorporating the new National Classification of Economic Activities NACE-2025 in all of its statistical operations.

In the case of the SSAI, the first publication of results with NACE-2025 will take place in March 2028.

Methodological note

The **Service Sector Activity Indicators (SSAI)** measure the short-term evolution of the activity of companies belonging to the non-financial market Services through two variables: turnover and employed personnel. The turnover includes the amounts invoiced by the company for the provision of services and sale of goods. Employed personnel include both paid and unpaid personnel.

To obtain it, a continuous survey is carried out that investigates more than 27,000 companies that operate in this sector every month. The results are presented in the form of indices with the aim of measuring variations with respect to the base year 2021.

The characteristics of this statistic are:

Type of survey: continuous monthly survey.

Base year: 2021.

Population scope: companies whose main activity is described in sections G, (Commerce), H (Transportation and Storage), I (Hospitality), J (Information and Communications), L (Real Estate Activities), M (Professional Activities, Scientific and Technical) and N (Administrative Activities and Auxiliary Services) of the National Classification of Economic Activities (CNAE-09).

Geographic scope: all the national territory except for Ceuta and Melilla, for which it is only collected in division 47 of CNAE-09 (retail trade).

Sample size: 27,500 companies

Sampling type: stratified random sampling.

Collection method: internet (IRIA system), administrative register, e-mail, fax, telephone or by postal mail.

More information on the [methodology](#) and the [standardised methodological report](#).

INE statistics are produced in accordance with the Code of Good Practice for European Statistics. More information on [Quality at INE](#) and the [Code of Best Practices](#).

For further information see [INEbase](#)

Official INE account on [X](#) [@es_ine](#)

All press releases at: www.ine.es/en/prensa/prensa_en.htm

 Press office: (+34) 91 583 93 63 / 94 08 – gprensa@ine.es

 Information area: (+34) 91 583 91 00 – www.ine.es/infoine/?L=1