

Industrial Turnover Indices (ITI) February 2024. Provisional data

Main results

- The annual rate variation of the Total Industrial Turnover Index stands at 0.5% in the seasonal and calendar adjusted and 1.7% in the original.
- The monthly variation stands at 1.1%, after seasonal and calendar adjustment.

More information

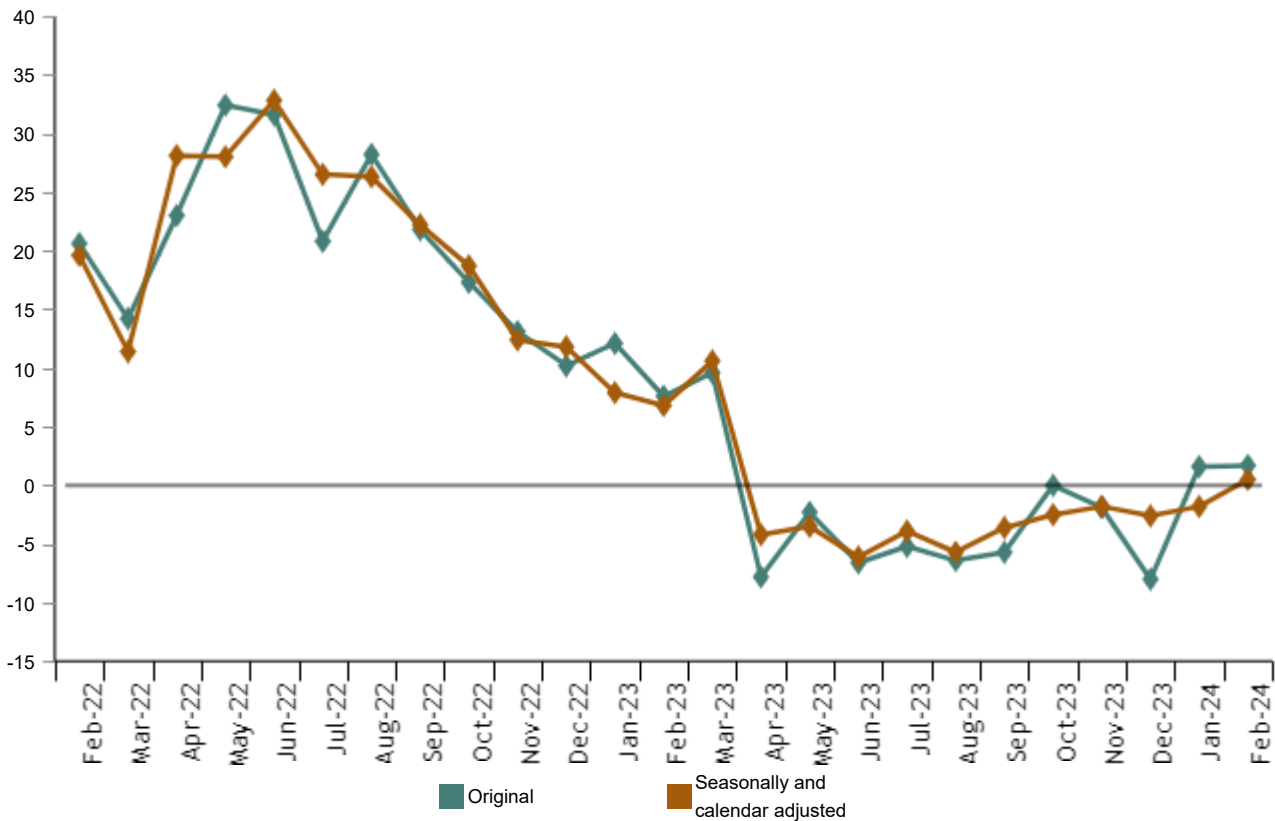
- [Tables annex](#) (includes information by autonomous communities and original and adjusted series by sectors)
- [Detailed results](#) (monthly and annual data)

The Industrial Turnover Index (ITI), once adjusted for seasonal and calendar effects, showed in February a variation of 0.5% as compared with the same month of the previous year.

The ITI original series registered an annual variation of 1.7%.

Industrial Turnover Index, Total. February 2024

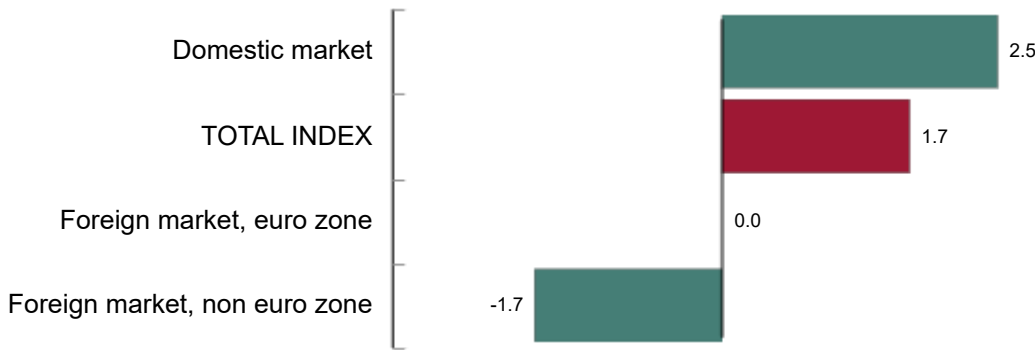
Monthly rate. Percentage



By market, negative annual rates were observed in one of the analysed markets in February. It is worth noting the increase registered in the domestic market (2.5%).

Industrial Turnover Index, Total and by market. February 2024

Annual rate. Percentage.

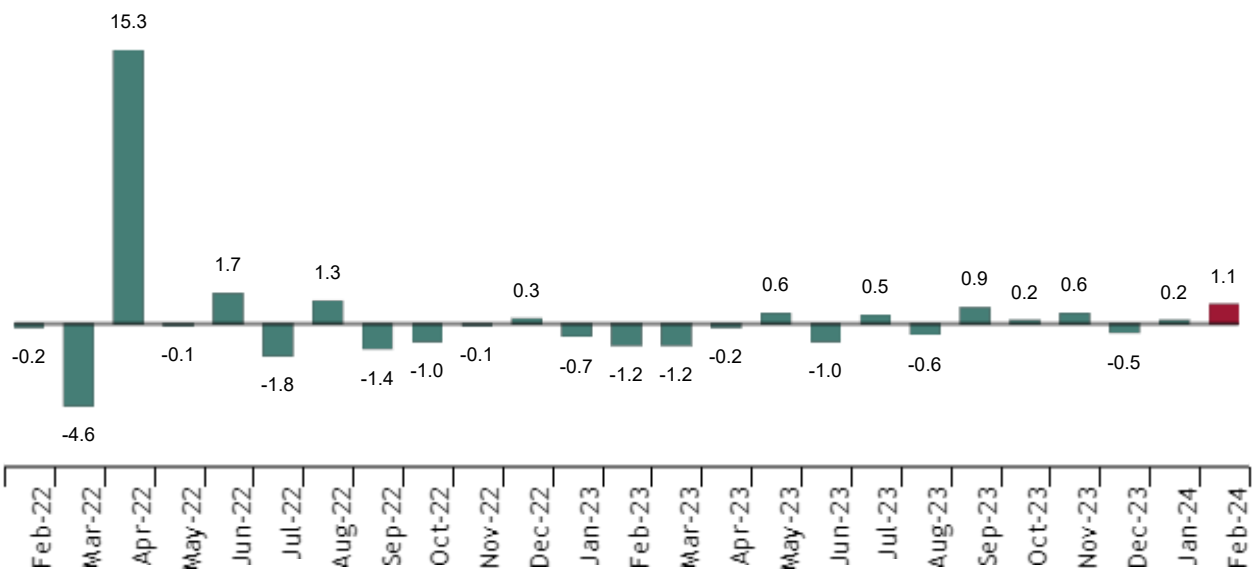


Monthly trend of ITI

The monthly variation of the seasonally and calendar adjusted Total Industrial Turnover Index between the months of February and January, stood at 1.1%. This rate was almost a point higher than the previous month.

Industrial Turnover Index, Total. Seasonally and calendar adjusted. February 2024

Monthly rate. Percentage



By Main Industrial Groupings (MIGs), all sectors showed positive monthly rates. It is worth highlighting the increase in *Capital goods* (3.0%), followed by *Energy* (2.9%).

Results by Autonomous Community. Original series

Turnover increased as compared to February 2023 in 11 Autonomous Communities and decreased in the other six.

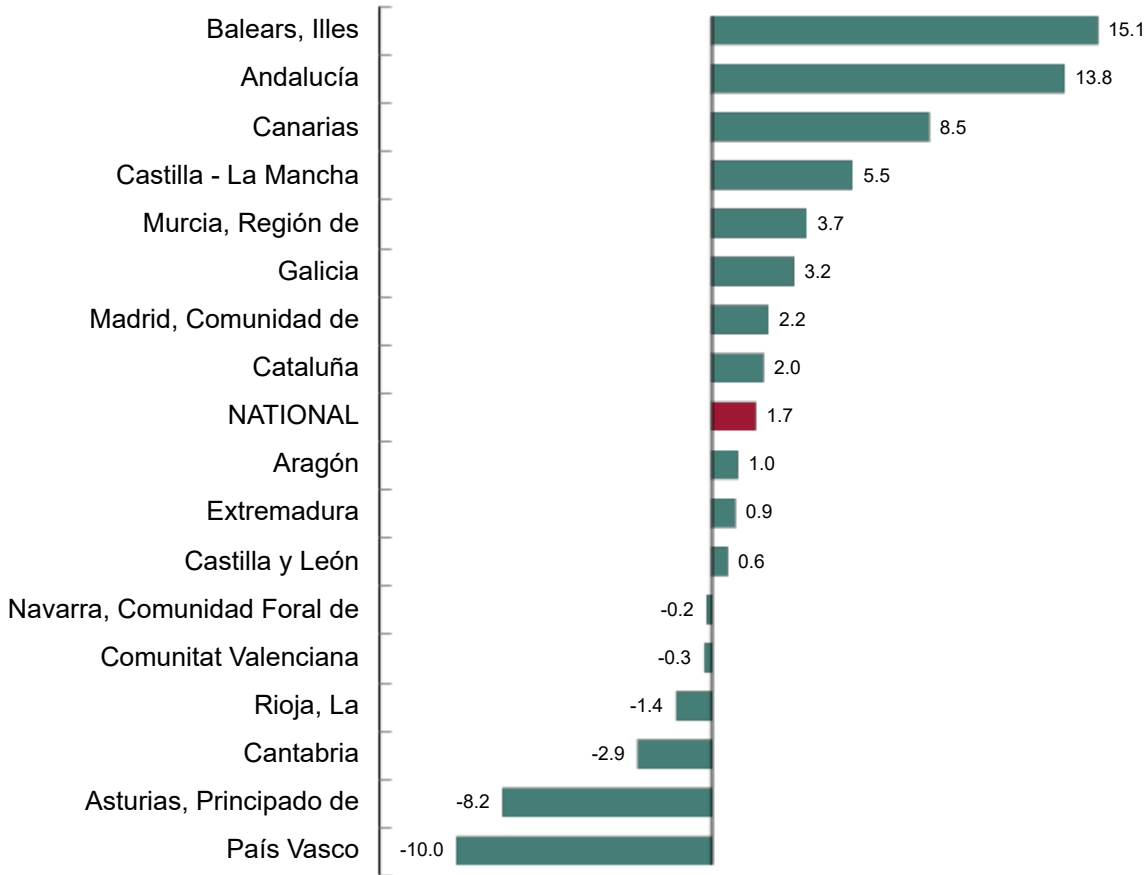
The largest increases were recorded in Illes Balears (15.1%), Andalucía (13.8%) and Canarias (8.5%).

The largest decreases were recorded in País Vasco (-10.0%), Principado de Asturias (-8.2%) and Cantabria (-2.9%).

Current press release at: <https://www.ine.es/dyngs/Prensa/en/ICN0224.htm>

Industrial Turnover Index, Total and by Autonomous Community. February 2024

Annual rate. Percentage



Revisions and data update

On the press release day, INE has updated ITI data series corresponding to the last 13 months. In the case of calendar adjusted and seasonally and calendar adjusted series, according to INE standard, series are revised since its beginning. Results are available at [INEBase](#).

Current press release at: <https://www.ine.es/dyngs/Prensa/en/ICN0224.htm>

Methodological note

The Industrial Turnover Indices (ITI) aim to measure the evolution of the activity of companies that are part of the industrial sector in Spain, based on their turnover figures. This information is also requested disaggregated by markets.

Survey Type: ongoing monthly.

Base year: 2021.

Population scope: units of economic activity whose main activity is included in Sections B: Extractive industries (with the exception, due to their not being relevant to Spanish industry, of division 09) or C: Manufacturing industry of CNAE-2009.

Geographical scope: the whole country, excluding Ceuta and Melilla.

Sample size: Approx. 12,000 establishments.


Data collection: monthly, value of total business turnover broken down by market.

Collection method: fill in a questionnaire by the respondent using one of the following methods: internet (IRIA system), email, fax, telephone or post.

Further information is available in the [methodology](#) and in the [standardised methodological report](#).

INE's statistics are produced according to the European Statistics Code of Practice. For further information at [Quality at INE and Code of Practice](#).

For further information see [INE base](#)

Official INE account on  [@es_ine](#)

All press releases at: www.ine.es/en/prensa/prensa_en.htm

 Press office: (+34) 91 583 93 63 / 94 08 – gprensa@ine.es

 Information area: (+34) 91 583 91 00 – www.ine.es/infoine/?L=1