

## Industrial Turnover Indices (ITI) March 2026. Provisional data

### Main results

- The annual rate variation of the Total Industrial Turnover Index stands at 8.1% in the seasonal and calendar adjusted and 9.7% in the original.
- The monthly variation stands at 10.1%, after seasonal and calendar adjustment.

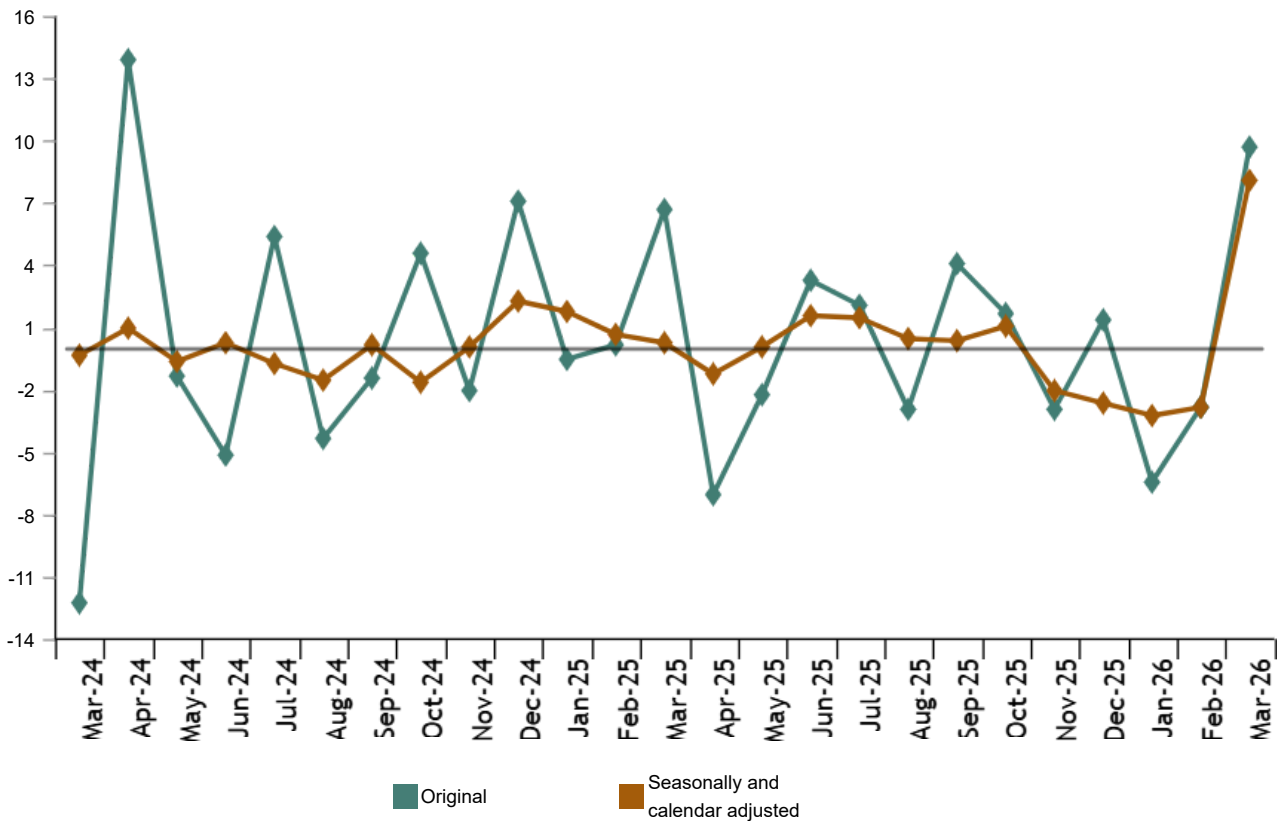
### More information

- [Tables annex](#) (includes information by autonomous communities and original and adjusted series by sectors)
- [Detailed results](#) (monthly and annual data)

The Industrial Turnover Index (ITI), once adjusted for seasonal and calendar effects, showed in March a variation of 8.1% as compared with the same month of the previous year.

The ITI original series registered an annual variation of 9.7%.

### Industrial Turnover Index, Total Annual rate. Percentage

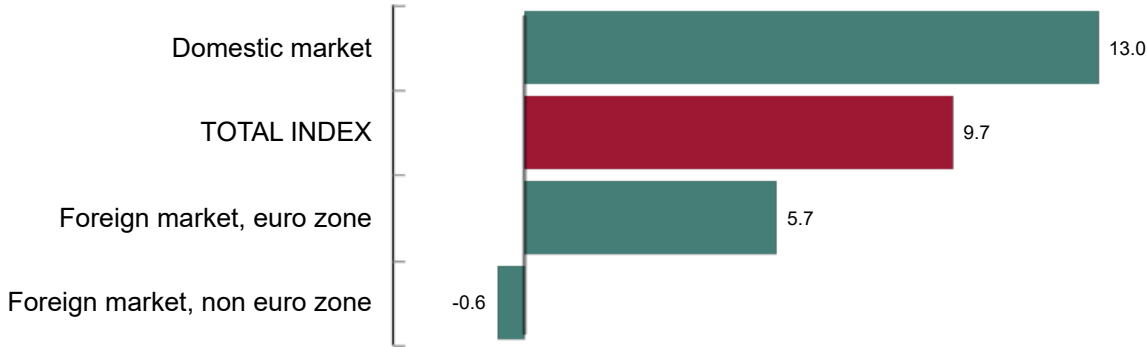


Current press release at: <https://www.ine.es/dyngs/Prensa/en/ICN0326.htm>

By market, positive annual rates were observed in two of the analysed markets in March. It is worth noting the increase registered in the domestic market (13.0%).

**Industrial Turnover Index, Total and by markets. March 2026**

Annual rate. Percentage

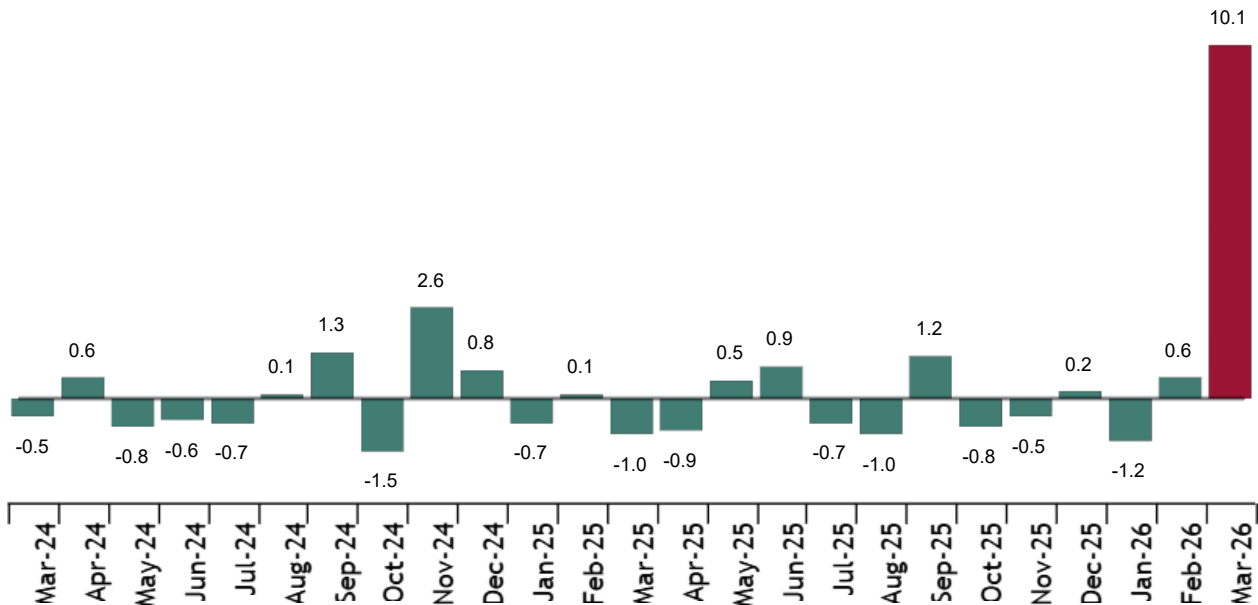


**Monthly trend of ITI**

The monthly variation of the seasonally and calendar adjusted Total Industrial Turnover Index between the months of March and February, stood at 10.1%. This rate was 9.5 points higher than the previous month.

**Industrial Turnover Index, Total. Seasonally and calendar adjusted**

Monthly rate. Percentage



By Main Industrial Groupings (MIGs), all sectors showed positive monthly rates. It is worth highlighting the increase in *Energy* (52.2%), followed by *Capital goods* (11.9%).

Current press release at: <https://www.ine.es/dyngs/Prensa/en/ICN0326.htm>

**Results by Autonomous Community. Original series**

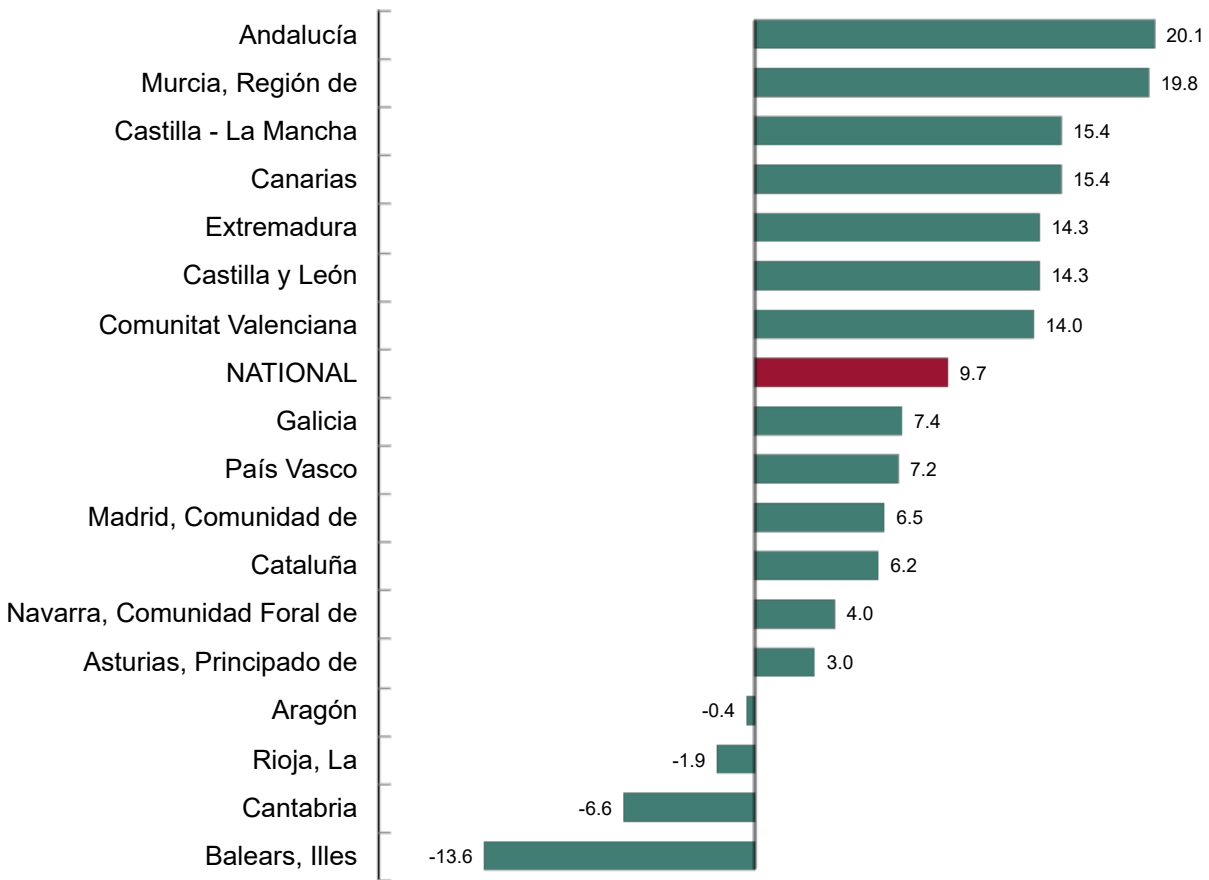
Turnover increased as compared to March 2025 in 13 Autonomous Communities and decreased in the other four.

The largest increases were recorded in Andalucía (20.1%), Región de Murcia (19.8%) and Castilla - La Mancha (15.4%).

The largest decreases were recorded in Illes Balears (-13.6%), Cantabria (-6.6%) and La Rioja (-1.9%).

**Annual rates of the Industrial Turnover, Total. March 2026**

Percentage



Current press release at: <https://www.ine.es/dyngs/Prensa/en/CN0326.htm>

**Revisions and data update**

On the press release day, INE has updated ITI data series corresponding to the last 13 months. In the case of calendar adjusted and seasonally and calendar adjusted series, according to INE standard, series are revised since its beginning. Results are available at [INEBase](#).

According to the [Commission Delegated Regulation \(EU\) 2023/137](#) INE has started the works to incorporate the new National Classification of Economic Activities CNAE-2025 in all the statistical operations.

In the case of the ITI, the release of the first results with CNAE-2025 will take place in March 2028.

## Methodological note

Industrial Turnover Indices (ITI) aim at measuring the monthly evolution of the companies belonging to the industrial sector in Spain, according to their turnover. This information is required broken down by markets.

**Survey Type:** ongoing monthly.

**Base year:** 2021.

**Population scope:** units of economic activity whose main activity is included in Sections B: Extractive industries (with the exception, due to their not being relevant to Spanish industry, of division 09) or C: Manufacturing industry of CNAE-2009.

**Geographical scope:** the whole country, excluding Ceuta and Melilla.

**Results and information reference period:** calendar month.

**Sample size:** Approx. 12,000 establishments.

**Data collection:** monthly, value of total business turnover broken down by market.


**Collection method:** fill in a questionnaire by the respondent using one of the following methods: internet (IRIA system), email, fax, telephone or post.

Further information is available in the [methodology](#) and in the [standardised methodological report](#).

INE's statistics are produced according to the European Statistics Code of Practice. For further information at [Quality at INE and Code of Practice](#).

---

For further information see [INE base](#)

Official INE account on  [@es\\_ine](#)

---

All press releases at: [www.ine.es/en/prensa/prensa\\_en.htm](http://www.ine.es/en/prensa/prensa_en.htm)

 Press office: (+34) 91 583 93 63 / (+34) 661 944 540 / (+34) 678 168 837 – [gprensa@ine.es](mailto:gprensa@ine.es)

 Information area: (+34) 91 583 91 00 – [www.ine.es/infoine/?L=1](http://www.ine.es/infoine/?L=1)