

Construction Production Index (COPI)

January 2026. Provisional data

Main results

- The annual rate of the Construction Production Index* stands at 0.4% in the seasonal and calendar-adjusted series and -9.9% in the original.
- The monthly variation of the COPI stood at -3.5%, after seasonal and calendar adjustment.
- INE disseminates today the Construction Production Index (COPI) for the first time, it substitutes the Survey of the Production Index in the Construction Industry (EIPIC) carried out until December 2025 by the Ministry of Transport and Sustainable Mobility.
- COPI rates for 2025 and 2026 are based on estimations obtained using data combining both statistics.

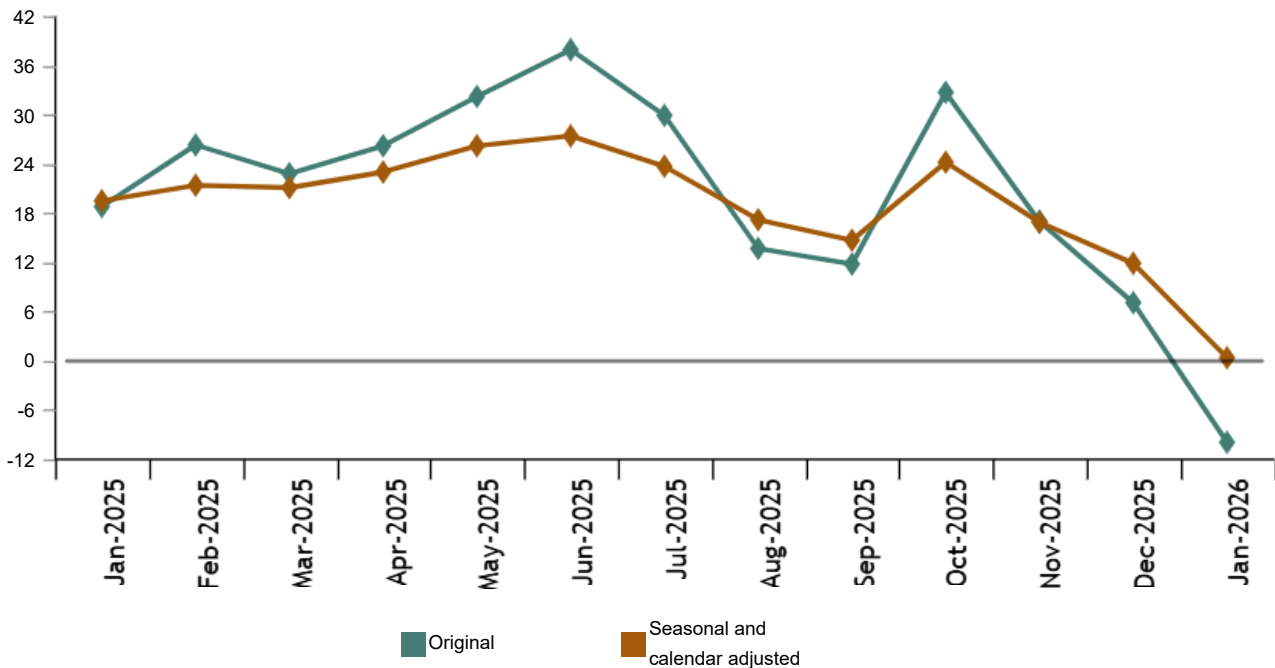
More information

- [Tables annex](#) (includes information on original and seasonally adjusted series)
- [Detailed results](#) (monthly and annual)

The Total Construction Production Index, once adjusted for seasonal and calendar effects, showed a variation of 0.4% in January, as compared with the same month of the previous year. On the other hand, the COPI original series registered an annual variation of -9.9%.

Construction Production Index*, Total

Annual rates. Percentage



* The production is obtained as the deflated value of the turnover

The seasonally and calendar-adjusted indices showed negative annual growth rates in all three analysed divisions. The strongest decline was recorded in *Construction of buildings* (-18.8%).

Construction Production Index, Total and by Divisions. January 2026

Annual rates. Percentage

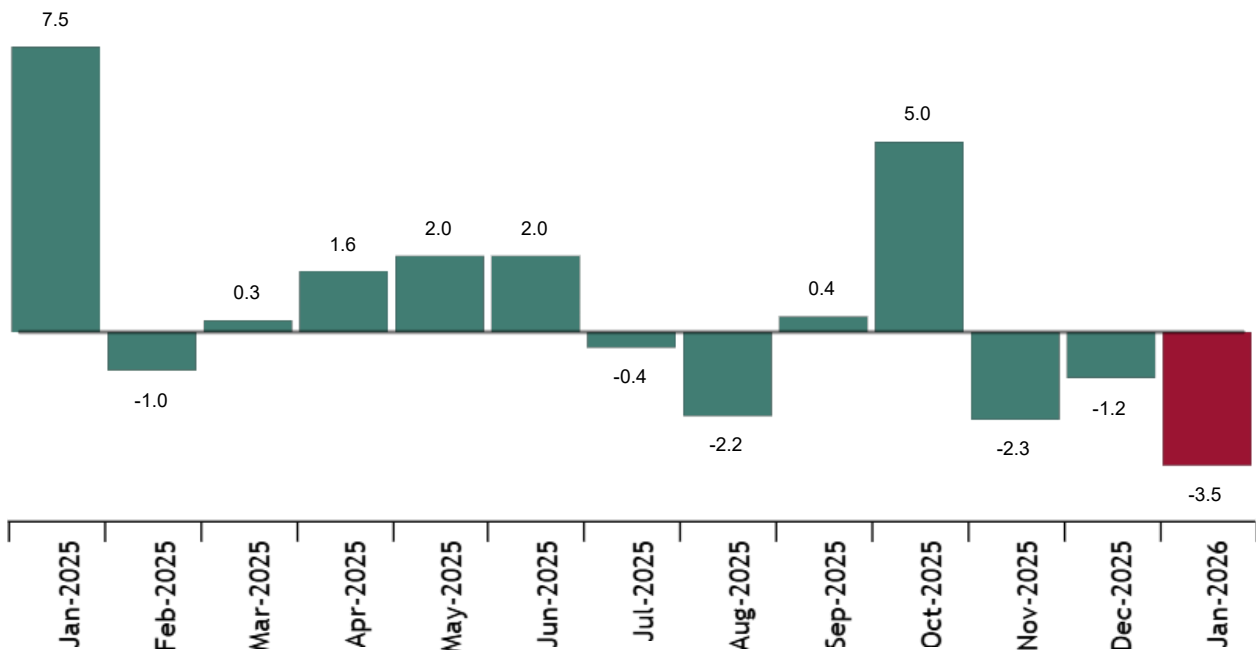
	Unadjusted index	Seasonally and calendar adjusted index
	Annual rate (%)	Annual rate (%)
CONSTRUCTION	-9.9	0.4
Construction of buildings	-26.1	-18.8
Civil engineering	-2.8	-2.5
Specialised construction activities	-3.1	-0.6

Monthly trend of COPI

The monthly variation of the seasonally and calendar-adjusted Construction Production Index between the months of December 2025 and January 2026 stood at -3.5%. This rate was 2.3 points lower than the previous month.

Construction Production Index, Total. Seasonally and calendar adjusted

Monthly rates. Percentage



Of the three divisions analyzed, only *Civil engineering* showed a positive monthly rate (0.8%). *Construction of buildings* recorded the largest decline (-4.9%).

Current press release at: <https://www.ine.es/dyngs/Prensa/en/IPC00126.htm>

Informative annex

Main characteristics of the new COPI base 2021

INE disseminates today the Construction Production Index (COPI) for the first time. It is an indicator whose aim is to measure the monthly evolution of the companies that belong to the construction sector in Spain, through its added value. The COPI substitutes the Survey of the Production Index in the Construction Industry (EIPIC), which was carried out monthly by the Ministry of Transport and sustainable mobility (MTMS) until December 2025.

The transfer of this statistical operation from MTMS to INE is the result of the Agreement reached by both parts, reflected in the agreement signed on 21 May 2025, whereby both the Structural Business Survey: Construction Sector (EEIC) and the EIPIC become the responsibility of INE in the different production phases. As for the EIPIC, INE decided to implement a new indicator to replace it, in order to apply the same methods and standard processes as in the other short-term statistics carried out at it.

It is important to point out that the COPI, just as EIPIC, meets the requirements of the Regulation (EU) 2019/2152 of the European Parliament and of the Council on European business statistics and Commission Implementing Regulation (EU) 2020/1197 of 30 July 2020 laying down technical specifications and arrangements pursuant to Regulation (EU) 2019/2152 of the European Parliament and of the Council on European business statistics, therefore it is a standardized and comparable at EU level indicator.

According to European legislation, the short-term indicators should be calculated in base 2021 until the new base enters into force, in 2028. Until then, the COPI should keep part of the methodology being used by the EIPIC, so the implementation will not be fulfilled until the rebasing process. Therefore, the COPI implementation process will take place in two phases.

In the first phase, which enters into force today, many EIPIC structural aspects have been maintained, with the aim of mitigating the differences between the two series, respecting the continuity with the current base. In the second phase the necessary changes to obtain an index with the same methodological characteristics as the other short-term indicators will be incorporated. It will enter into force in 2028.

In this first phase, INE carried out a methodological analysis of the EIPIC in order to identify the elements that differ the most from the standard short-term production methods at this body. As a result of this analysis, the following priority changes were defined: questionnaire used, treatment of the information, sampling design or index calculation.

Questionnaire simplification

One of the European statistics Code of Practice Principles, adopted by INE, alludes to non-excessive burden on respondents. To this end, one of the changes introduced in the COPI is the questionnaire simplification, asking the companies just for information about their turnover. Therefore, the questions about employment (number of employees, etc.) have been disregarded, as they are being obtained in other INE statistics.

Sampling design

COPI sampling design has been obtained from the EIPIC sample, which has been revised and supplemented with 600 companies belonging to the bigger size companies' stratum (more than 100 employees). This way the sample is reinforced.

Likewise, the sampling weight, which represent the relative importance of each unit within the sample, have been recalculated. These weights will be kept fixed for the whole year and will be revised at the beginning of next year.

Non-response estimation method

The method used in the case of non-response is the same as in other short-term statistics, based on the imputation of the missing value.

Calculation formula

A company turnover is composed of two components: the production and the unitary price or cost of it. Therefore, the most accurate way of estimating the production is by removing the effect of the prices on the turnover, through the deflation.

In view of limiting, as far as possible, the response burden, COPI asks the sampling units their turnover exclusively, instead of asking for sales and its components to obtain the turnover. In this way, the method is like the one used in the service sector production.

Linking and continuity of series

COPI implementation has been carried out trying to modify some EIPIC relevant methodology aspects, so that the methodology is standardized with INE short-term indicators. Although the aim is keeping close to EIPIC methodology, the changes mean a breach with respect to this indicator.

Therefore, in order to provide annual rates in 2026, INE has made an estimation of the monthly 2025 indices, which makes it possible to estimate these rates. It should be noted that these rates are the result of an estimation, and comparable annual rates will not be available until January 2027.

Further information is available in the document *Principales novedades metodológicas del Índice de Producción de la Construcción*.

Data revisions and updates

On the press release day, INE has updated COPI data series corresponding to the last 13 months. In the case of calendar adjusted and seasonally and calendar adjusted series, according to INE standard, the series are revised since its beginning. The results are available at [INEBase](#).

According to the [Commission Delegated Regulation \(EU\) 2023/137](#) INE has started the works to incorporate the new National Classification of Economic Activities CNAE-2025 in all the statistical operations.

In the case of the COPI, the release of the first results with CNAE-2025 will take place in March 2028.

Methodological note

The Construction Production Index (COPI) is a short-term synthesis statistical operation aiming at obtaining an indicator to measure the short-term evolution of added value in the construction sector.

Survey type: ongoing monthly.

Base year: 2021.

Population scope: units of economic activity that carry out any activity included in Section F: Construction CNAE-2009.

Geographical scope: the whole country.

Results reference period: calendar month.


Sample size: Approx. 3,600 units.

Collection method: fill in a questionnaire by the respondent using the following methods: internet (IRIA system), email, fax, telephone or post.

Further information is available in the [methodology](#) and in the [standardized methodological report](#).

INE statistics are produced in accordance with the Code of Good Practice for European Statistics. More information on

For further information see [INEbase](#)

Official INE account on  [@es_ine](#)

All press releases at: www.ine.es/en/prensa/prensa_en.htm

 Press office: (+34) 91 583 93 63 / (+34) 661 944 540 / (+34) 678 168 837 – gprensa@ine.es

 Information area: (+34) 91 583 91 00 – www.ine.es/infoine/?L=1