

Services Sector Production Index (SSPI)

February 2026. Provisional data

Main results

- The annual variation of the Market Services Sector production index was 0.7% in February in the seasonally and calendar adjusted series.
- The monthly rate was 0.0% if seasonal and calendar effects are removed.

More information

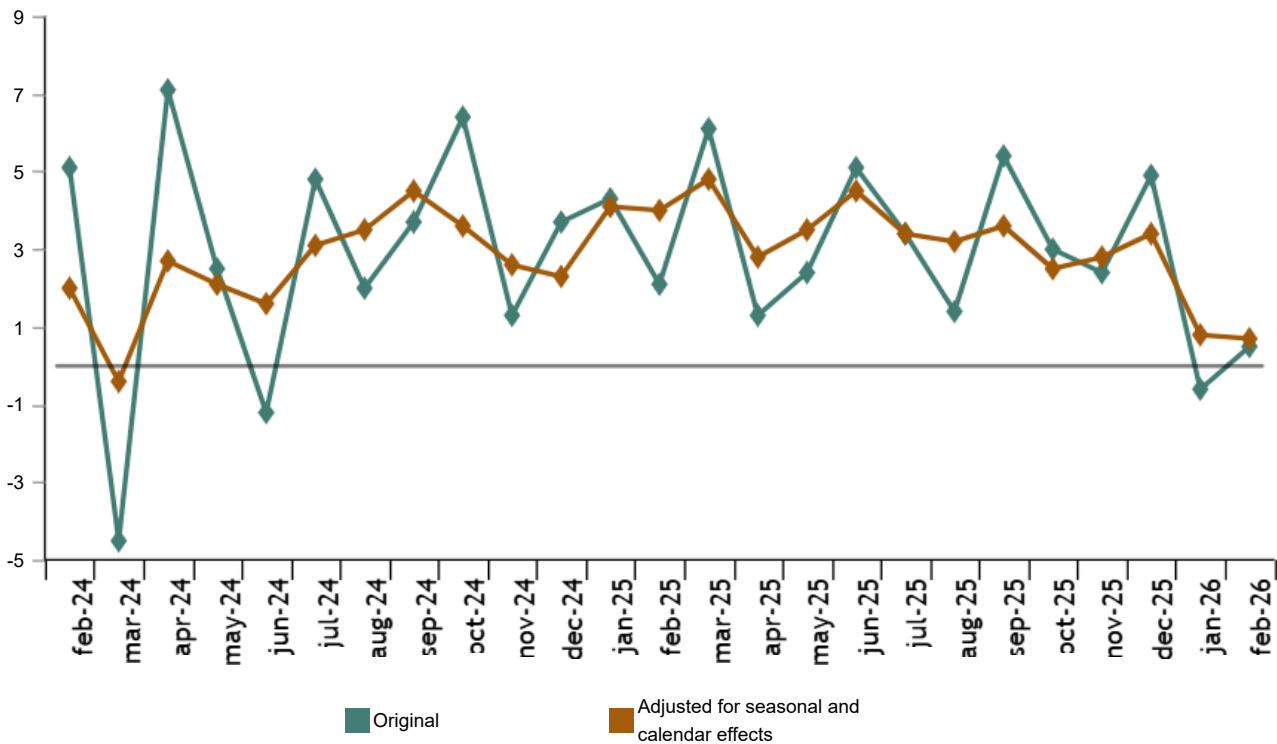
- [Tables annex](#) (includes original and adjusted series by sectors)
- [Detailed results](#)

The general index of the production for the Market Services Sector, after adjusting for seasonal and calendar effects, experienced a variation of 0.7% in February compared to the same month of 2025. This rate was one tenth lower than that recorded in January.

The original series showed an annual variation of 0.5%, which was 1.1 points above that registered in January.

General index of production for the Market Services Sector

Annual Rate. Percentage



Current press release at: <https://www.ine.es/dyngs/Prensa/en/IPSS0226.htm>

Excluding seasonal and calendar effects, *Commerce* increased by 0.3% compared to February 2025 and *Other Services* by 1.4%.

Annual rates in Production index for the Market Services Sector: General and by sector. February 2026

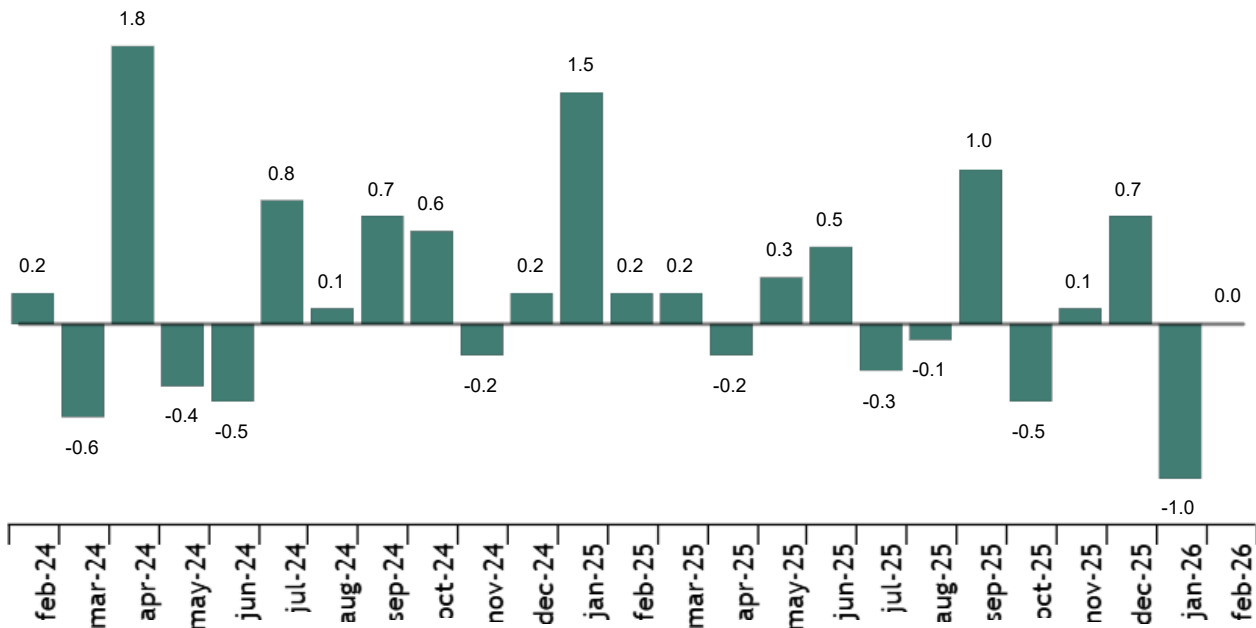
Percentage

	Original index	Seasonally adjusted index
	Annual rate (%)	Annual rate (%)
GENERAL INDEX	0.5	0.7
1. TRADE	0.3	0.3
2. OTHER SERVICES	0.6	1.4

Monthly trend in production for the Market Services Sector

After adjusting for seasonal and calendar effects, the monthly variation of the general index of production for the Market Services Sector between February and January was 0.0%. This rate was one point higher than that observed in January.

General index of the production for the Market Services Sector. Seasonally and calendar adjusted
Monthly rate. Percentage



Current press release at: <https://www.ine.es/dyngs/Prensa/en/IPSS0226.htm>

Data revisions and updates

The INE has updated the SSPI data for the last fifteen months. In the case of the series adjusted, the series have been reviewed from the beginning, following the INE standard. All results of this operation are available on [INEBase](#).

In accordance with [Commission Delegated Regulation \(EU\) 2023/137](#), the INE has begun to work on incorporating the new National Classification of Economic Activities NACE-2025 in all of its statistical operations.

In the case of the SSPI, the first publication of results with NACE-2025 will take place in March 2028.

Methodological note

The Services Sector Production Index (SSPI) is a volume index whose purpose is to measure the evolution of the value added of services sector activities of the market in the short term. It is an indicator similar to those already provided by the INE on a monthly basis for the industrial and retail sectors.

With its implementation, compliance is given to Commission Implementing Regulation (EU) 2020/1197 establishing technical specifications and modalities pursuant to Regulation (EU) 2019/2152 of the European Parliament and of the Council on European business statistics, which obliges all EU countries to develop an indicator on the production of the Services Sector since 2021, with indices based on 2021.

It is a derived statistic that is compiled by deflating the Service Sector Activity Indicators (SSAI), for which prices indices from various official statistics are used, depending on the scope of each activity. The indices used come from the Services Price Index (SPI), the Consumer Price Index (CPI), the Industrial Price Index (IPRI) and the Hotel Price Index (HPI).

The result is an indicator that measures the evolution of production over the activity of the services sector.

Type of survey: statistical derived from other statistical results.

Frequency: monthly.

Base year: 2021.


Population scope: companies whose main economic activity is described in sections G, (Trade), H (Transport and Storage), I (Accommodation), J (Information and Communications), L (Real estate activities) M (Professional, Scientific and Technical Activities) and N (Administrative and Support Services Activities) of the National Classification of Economic Activities (CNAE-09).

Geographical scope: all the national territory except for Ceuta and Melilla, for which it is only collected in division 47 of CNAE-09 (retail trade).

For more information you can access the [methodology](#) and the [standardised methodological report](#).

INE statistics are produced in accordance with the Code of Good Practice for European Statistics. More information at [Quality at INE](#) and the [Code of Best Practices](#).

For further information see [INE base](#)

Official INE account on  [@es_ine](#)

All press releases at: www.ine.es/en/prensa/prensa_en.htm

 Press office: (+34) 91 583 93 63 / (+34) 661 944 540 / (+34) 678 168 837 – gprensa@ine.es

 Information area: (+34) 91 583 91 00 – www.ine.es/infoine/?L=1