

6 March 2008

Transport of passengers statistics

January 2008. *Provisional data*

In January, the number of passengers using city transport increased 0.1% in one year

The number of passengers using the inter-city transport increased 1.1%

More than 272 million passengers used **the city transport** in January, (a yearly increase of 0.1%). There was an increase of 1.6% in the metropolitan service and a decrease of 0.8% in the city bus service in January 2007.

On the other hand, **the inter-city transport** was used by nearly 155.7 million passengers, (a yearly decrease of 1.1%).

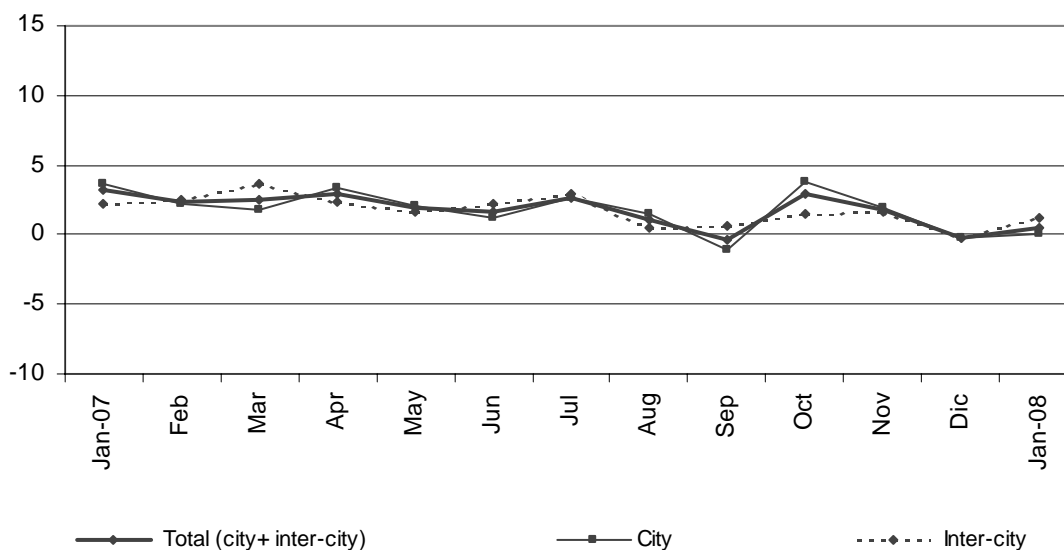
	No. of passengers (thousands)	% rate	
		Inter-annual	Accumulated inter-annual
City transport			
TOTAL	272,069	0.12	0.12
Buses	165,643	-0.80	-0.80
- Scheduled ¹	164,730	-0.80	-0.80
- Non-scheduled	913	-1.78	-1.78
Metropolitan	106,426	1.58	1.58
Inter-city transport			
TOTAL	155,789	1.13	1.13
Road transport	102,437	2.78	2.78
- Scheduled ¹	90,977	2.71	2.71
- Non-scheduled	11,460	3.30	3.30
Railway transport ³	49,909	-2.27	-2.27
Air transport (domestic) ³	2,989	4.85	4.85
Sea transport (cabotage) ^{2, 3}	454	-0.24	-0.24

(1) City and Inter-city transport by road includes: general scheduled and especial scheduled (scholars and workers).

(2) Disembarked passengers only.

(3) Estimated data. Railway: only FEVE is estimated.

Variation rate in one year (%)



The general scheduled city bus service decreased 1%

In January, more than 155 million passengers used the general scheduled city bus service, which means a decrease of 1% in the inter-annual rate.

By Autonomous Communities, there were remarkable increases in Castilla – La Mancha (15.6%), País Vasco (3.2%) and Asturias (2.2%), and decreases in Madrid (4.1%), Cataluña (3.4%) and Castilla y León (1.6%).

General scheduled city bus service

	No. of passengers (thousands)	% rate	
		inter-annual	Accumulated inter-annual
TOTAL	155,206	-0.98	-0.98
Andalucía	18,827	1.68	1.68
Aragón	10,919	-0.90	-0.90
Asturias (Principado de)	3,551	2.17	2.17
Canarias	5,027	-0.10	-0.10
Castilla y León	6,494	-1.55	-1.55
Castilla-La Mancha	1,949	15.59	15.59
Cataluña	27,828	-3.37	-3.37
Comunitat Valenciana	12,660	0.94	0.94
Extremadura	1,165	0.65	0.65
Galicia	5,290	-0.26	-0.26
Madrid (Comunidad de)	43,929	-4.09	-4.09
Murcia (Región de)	1,906	1.90	1.90
País Vasco	6,611	3.17	3.17
Others ¹	9,050	6.00	6.00

¹ In order to protect the statistical secrecy, Autonomous Communities are grouped in those cases in which data at a company level could be identified.

The special scheduled city bus service increased 2.3% with regard to January 2007.

In January, the special and scheduled city bus line was used by nearly 7.2 million scholars, 1.2% more than in the same month of 2007.

On the other hand, more than 2.3 million workers used a special and scheduled city bus line, 6% more than in January 2007.

Special scheduled city bus

	No. of passengers (thousands)	% rate	
		inter-annual	Accumulated inter-annual
TOTAL	9,524	2.33	2.33
Scholars	7,192	1.21	1.21
Workers	2,332	5.96	5.96

The number of passengers using the metropolitan service increased 1.6% in January with regard to the same month in 2007. There were remarkable increases in Bilbao (4.9%), Barcelona (4.4%) and Valencia (3%) while in Madrid there was a decrease of 0.4%.

Metropolitan

	No. of passengers (thousands)	% rate	
		inter-annual	Accumulated inter-annual
TOTAL	106,426	1.58	1.58
Barcelona	32,314	4.43	4.43
Bilbao	7,891	4.88	4.88
Madrid	60,267	-0.43	-0.43
Valencia	5,954	3.00	3.00

The inter-city transport increased 1.1% with regard to January 2007.

The number of passengers using the inter-city transport was nearly 155.8 million in January, which means a yearly increase of 1.1%.

The number of passengers using the inter-city transport by road increased 2.8%. There were increases in the non-scheduled transport (3.3%) and in the special scheduled transport (3.6%).

Inter-city Transport

	No. of passenge (thousands)	% rate	
		Interannual	Accumulated interannual
TOTAL	155,789	1.13	1.13
Road transport	102,437	2.78	2.78
General Scheduled	57,604	2.19	2.19
Special scheduled	33,373	3.61	3.61
- Scholars	23,961	2.03	2.03
- Workers	9,412	7.89	7.89
Non-scheduled	11,460	3.30	3.30
Railway transport	49,909	-2.27	-2.27
RENFE	42,867	-2.18	-2.18
- AVE - Long distance ²	1,410	9.73	9.73
- Regional ³	2,331	-4.00	-4.00
- Local	39,126	-2.46	-2.46
Narrow gauge trains ¹	7,042	-2.77	-2.77
Air (domestic) ¹	2,989	4.85	4.85
Sea transport (cabotage) ¹	454	-0.24	-0.24

(1) Estimated data. Narrow gauge trains: only FEVE is estimated.

(2) Long Distance includes long distance and long distance high speed.

(3) Regional includes regional and regional high speed.

For further information see INEbase-www.ine.es/en/welcome_en.htm All press releases at: www.ine.es/en/prensa/prensa_en.htm

Press office: Telephone: 91 583 93 63 / 94 08 – Fax: 91 583 90 87 - gprensa@ine.es

Information area: Telephone: 91 583 91 00 – Fax: 91 583 91 58 – www.ine.es/infoine