

9 April 2008

Transport of passengers statistics

February 2008. *Provisional data*

In February, the number of passengers using city transport increased 3.2% in one year

The number of passengers using the inter-city transport increased 2.9%

More than 270.5 million passengers used **the city transport** in February, (a yearly increase of 3.2%). There were increases of 5.8% in the metropolitan service and of 1.6% in the city bus service in February 2008.

On the other hand, **the inter-city transport** was used by nearly 160 million passengers, (a yearly increase of 2.9%).

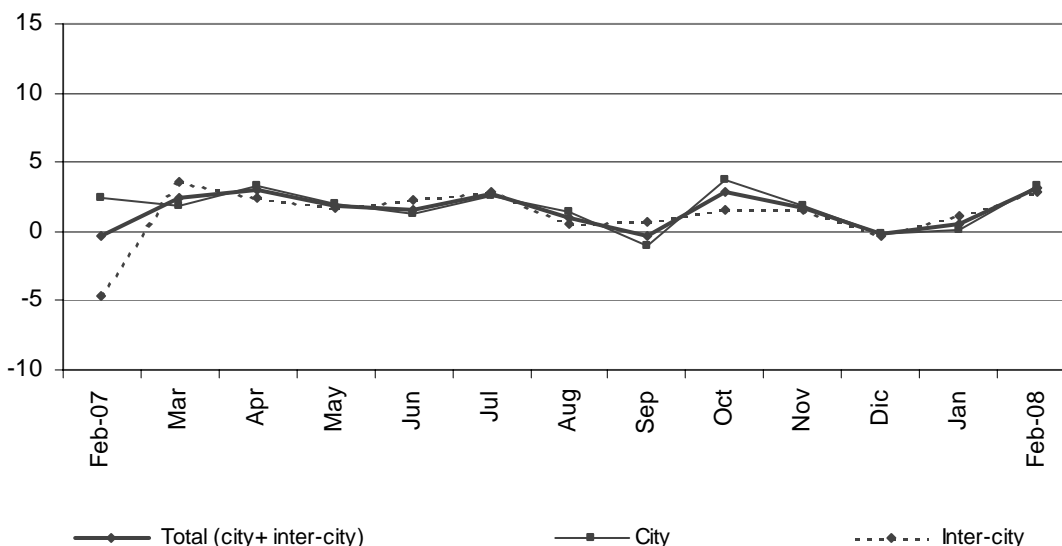
	No. of passengers (thousands)	% rate	
		Inter-annual	Accumulated inter-annual
City transport			
TOTAL	270,529	3.23	1.64
Buses	164,452	1.61	0.39
- Scheduled ¹	163,404	1.63	0.40
- Non-scheduled	1,048	-0.89	-1.31
Metropolitan	106,077	5.84	3.66
Inter-city transport			
TOTAL	159,820	2.85	2.03
Road transport	105,818	2.96	2.87
- Scheduled ¹	91,801	2.69	2.70
- Non-scheduled	14,017	4.73	4.08
Railway transport	50,231	2.15	-0.10
Air transport (domestic)	3,320	9.76	8.30
Sea transport (cabotage) ^{2, 3}	451	9.38	9.38

(1) City and Inter-city transport by road includes: general scheduled and especial scheduled (scholars and workers).

(2) Disembarked passengers only.

(3) Estimated data.

Variation rate in one year (%)



The general scheduled city bus service increased 1.5%

In February, more than 153.5 million passengers used the general scheduled city bus service, which means a decrease of 1.5% in the inter-annual rate.

By Autonomous Communities, there were remarkable increases in Castilla – La Mancha (15.1%), Extremadura (6.7%), Asturias (6.4%), Aragón (6.2%) and Galicia (6%), and decreases in Canarias (-7.1%) and Madrid (-5.5%).

General scheduled city bus service

	No. of passengers (thousands)	% rate	
		inter-annual	Accumulated inter-annual
TOTAL	153,620	1.54	0.26
Andalucía	20,292	4.51	3.12
Aragón	11,358	6.15	2.57
Asturias (Principado de)	3,399	6.35	4.17
Canarias	3,889	-7.12	-3.29
Castilla y León	6,368	3.77	1.01
Castilla-La Mancha	1,984	15.05	15.32
Cataluña	28,526	3.83	0.14
Comunitat Valenciana	12,366	1.73	1.33
Extremadura	1,136	6.72	3.56
Galicia	5,042	6.04	2.72
Madrid (Comunidad de)	41,554	-5.47	-4.76
Murcia (Región de)	1,833	3.29	2.58
País Vasco	6,911	5.24	4.22
Others ¹	8,962	9.57	7.75

¹ In order to protect the statistical secrecy, Autonomous Communities are grouped in those cases in which data at a company level could be identified.

The special scheduled city bus service increased 3% with regard to February 2007.

In February, the special and scheduled city bus line was used by more than 7.3 million scholars, which means an increase of 3.2% in regard to the same month of 2007.

On the other hand, more than 2.4 million workers used a special and scheduled city bus line, 2.4% more than in February 2007.

Special scheduled city bus

	No. of passengers (thousands)	% rate	
		inter-annual	Accumulated inter-annual
TOTAL	9,784	3.02	2.68
Scholars	7,333	3.22	2.21
Workers	2,451	2.41	4.11

The number of passengers using the metropolitan service increased 5.8% in February with regard to the same month in 2007.

The inter annual rate increased in all Spanish metropolitan services. There were remarkable increases in Barcelona (7.1%), Madrid (5.7%) and Bilbao (5.1%).

Metropolitan

	No. of passengers (thousands)	% rate	
		inter-annual	Accumulated inter-annual
TOTAL	106,077	5.84	3.66
Barcelona	32,116	7.11	5.75
Bilbao	7,535	5.11	4.99
Madrid	60,758	5.72	2.57
Valencia	5,667	1.17	2.10

The inter-city transport increased 2.9% with regard to February 2007.

The number of passengers using the inter-city transport was upper to 159.8 million in January, which means a yearly increase of 2.9%.

In the road transport, the number of passengers using the inter-city transport by bus increased 3%. There were increases in the non-scheduled transport (4.7%) and in the special scheduled transport (2.9%) —it is specially remarkable the increase in the special scheduled transport of workers (6.3% in the inter-annual rate)—.

Air and railway transports increased 9.8% and 2.2% respectively in regard to the same month of 2007.

Inter-city Transport

	No. of passengers (thousands)	% rate	
		Interannual	Accumulated interannual
TOTAL	159,820	2.85	2.03
Road transport	105,818	2.96	2.87
General Scheduled	56,890	2.55	2.37
Special scheduled	34,911	2.92	3.26
- Scholars	25,530	1.73	1.87
- Workers	9,381	6.30	7.09
Non-scheduled	14,017	4.73	4.08
Railway transport	50,231	2.15	-0.10
RENFE	43,039	1.55	-0.35
- AVE - Long distance ²	1,543	22.17	15.89
- Regional ³	2,372	2.15	-0.99
- Local	39,124	0.84	-0.84
Narrow gauge trains	7,192	5.90	1.44
Air (domestic)	3,320	9.76	8.30
Sea transport (cabotage) ¹	451	9.38	9.38

(1) Estimated data

(2) Long Distance includes long distance and long distance high speed.

(3) Regional includes regional and regional high speed.

More information in INEbase – www.ine.es All the press releases in: www.ine.es/prensa/prensa.htm

Press office: Telephone: 91 583 93 63 / 94 08 – Fax: 91 583 90 87 - gprensa@ine.es

Information area: Telephone: 91 583 91 00 – Fax: 91 583 91 58 – www.ine.es/infoine