

8 May 2008

Transport of passengers statistics

March 2008. *Provisional data*

In March, the number of passengers using city transport decreased 14.6% in one year

The number of passengers using the inter-city transport decreased 8.8%

Nearly 254 million passengers used **the city transport** in March, (a yearly decrease of 14.6%). There were decreases of 9.8% in the metropolitan service and of 17.6% in the city bus service in March 2008. This evolution owes, partly, to that the Holy Week has taken place this year in March whereas last year was celebrated in April.

On the other hand, **the inter-city transport** was used by more than 157.8 million passengers, (a yearly decrease of 8.8%).

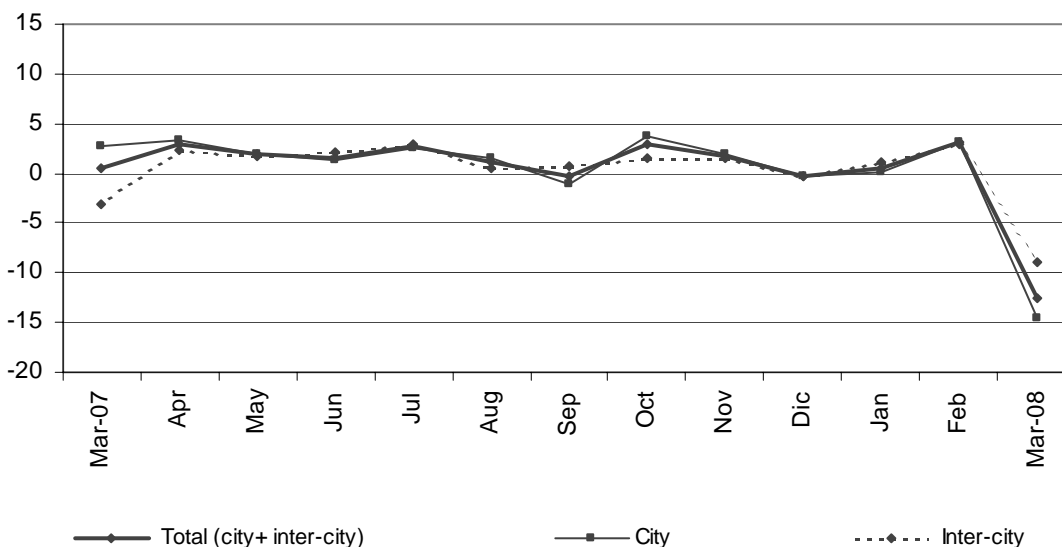
	No. of passengers (thousands)	% rate	
		Inter-annual	Accumulated inter-annual
City transport			
TOTAL	253,918	-14.62	-4.18
Buses	151,485	-17.59	-6.06
- Scheduled	150,154	-17.63	-6.06
General scheduled	141,917	-17.19	-5.98
Special scheduled	8,237	-24.61	-7.35
- Non-scheduled	1,331	-12.81	-6.31
Metropolitan	102,433	-9.81	-1.14
Inter-city transport			
TOTAL	157,863	-8.84	-1.88
Road transport	102,697	-10.17	-1.84
- Scheduled ¹	87,113	-10.72	-2.05
- Non-scheduled	15,584	-7.01	-0.42
Railway transport	50,854	-7.00	-2.53
Air transport (domestic)	3,728	2.45	6.06
Sea transport (cabotage) ^{2, 3}	584	10.18	8.26

(1) Inter-city transport by road includes: general scheduled and especial scheduled (scholars and workers).

(2) Disembarked passengers only.

(3) Estimated data.

Variation rate in one year (%)



The general scheduled city bus service decreased 17.2%

In February, nearly to 142 million passengers used the general scheduled city bus service, which means a decrease of 17.2% in the inter-annual rate.

By Autonomous Communities, there were remarkable decreases in Cataluña (26.9%), Madrid (24.5%) and Comunitat Valenciana (24.1%).

General scheduled city bus service

	No. of passengers (thousands)	% rate inter-annual	Accumulated inter-annual
TOTAL	141,917	-17.19	-5.98
Andalucía	21,710	-5.50	-0.13
Aragón	10,917	-6.85	-0.73
Asturias (Principado de)	3,455	-4.94	0.96
Canarias	4,522	-5.25	-3.96
Castilla y León	6,548	-8.19	-2.29
Castilla-La Mancha	1,882	-4.21	8.18
Cataluña	22,584	-26.88	-9.43
Comunitat Valenciana	10,417	-24.13	-7.77
Extremadura	1,090	-15.77	-3.56
Galicia	4,736	-15.00	-3.60
Madrid (Comunidad de)	37,709	-24.47	-11.81
Murcia (Región de)	1,666	-14.95	-3.55
País Vasco	6,220	-4.76	1.21
Others ¹	8,461	-8.86	1.82

¹ In order to protect the statistical secrecy, Autonomous Communities are grouped in those cases in which data at a company level could be identified.

The special scheduled city bus service decreased 24.6% with regard to March 2007.

In March, the special and scheduled decreased of 24.6% in regard to the same month of 2007.

The number of passengers using the scholar and worker special scheduled city bus line decrease 29.0% and 8.3% respectively.

Special scheduled city bus

	No. of passengers (thousands)	% rate	
		inter-annual	Accumulated inter-annual
TOTAL	8,237	-24.61	-7.35
Scholars	6,105	-29.02	-9.56
Workers	2,132	-8.28	-0.05

Fewer passengers in all the Spanish metropolitan services

The number of passengers using the metropolitan service decreased 9.8% in March with regard to the same month in 2007.

The inter annual rate decreased in all Spanish metropolitan services. There were remarkable decreases in Valencia (19.6%) and Bilbao (19.0%).

Metropolitan

	No. of passengers (thousands)	% rate	
		inter-annual	Accumulated inter-annual
TOTAL	102,433	-9.81	-1.14
Barcelona	32,234	-5.25	1.81
Bilbao	6,496	-19.00	-3.48
Madrid	57,847	-9.97	-1.85
Valencia	5,856	-19.57	-6.35

The inter-city transport decreased 8.8% with regard to March 2007.

The number of passengers using the inter-city transport was upper to 157.8 million in March, which means a yearly decrease of 8.8%.

In the road transport, the number of passengers using the inter-city transport by bus decreased 10.2%. Inside this one, all the types of transport decrease. The general scheduled 6.4 %, the special scheduled 18.4 % and the non-scheduled 7.0 %.

The railway transport decreased 7.0%. Nevertheless, it is necessary to emphasize that whereas the users of local RENFE and of Narrow gauge trains diminish (8.5 % and 9.6 %, respectively), the passengers of AVE (HIGH SPEED TRAIN) long distance and RENFE's half distance increase 27.0 % and 4.8 %, respectively.

Air transport increased 2.5% in regard to the same month of 2007.

Inter-city Transport

	No. of passengers (thousands)	% rate	
		Interannual	Accumulated interannual
TOTAL	157,863	-8.84	-1.88
Road transport	102,697	-10.17	-1.84
General scheduled	58,384	-6.41	-0.77
Special scheduled	28,729	-18.35	-4.25
- Scholars	20,398	-21.84	-6.41
- Workers	8,331	-8.35	1.82
Non-scheduled	15,584	-7.01	-0.42
Railway transport	50,854	-7.00	-2.53
RENFE	43,992	-6.57	-2.55
- AVE - Long distance ²	1,963	26.97	20.08
- Regional ³	2,783	4.82	1.09
- Local	39,246	-8.49	-3.53
Narrow gauge trains	6,862	-9.63	-2.45
Air (domestic)	3,728	2.45	6.06
Sea transport (cabotage) ¹	584	10.18	8.26

(1) Estimated data

(2) Long Distance includes long distance and long distance high speed.

(3) Regional includes regional and regional high speed.

For further information see INEbase-www.ine.es/en/welcome_en.htm All press releases at: www.ine.es/en/prensa/prensa_en.htm

Press office: Telephone: 91 583 93 63 / 94 08 – Fax: 91 583 90 87 - gprensa@ine.es

Information area: Telephone: 91 583 91 00 – Fax: 91 583 91 58 – www.ine.es/infoine