

Passenger Transport Statistics
March 2009. Provisional data

The number of passengers using city transport increases 8% in March, as compared with the same month the previous year

The number of passengers using inter-city transport increases 3.2% in the interannual rate

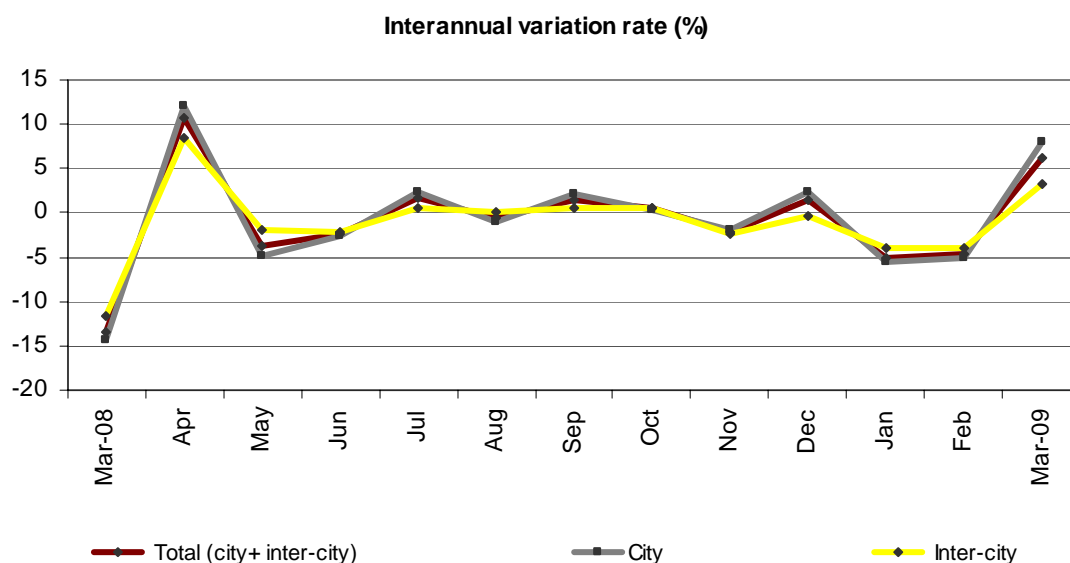
Approximately 275 million passengers used the **city transport** service in March, representing an 8% increase with regard to the same month of 2008. Increases of 10.9% in the bus service, and 3.8% in the metropolitan service, were recorded in March. This evolution is due, in part, to the fact that Easter Week was held in the month of March this year, whilst last year it was held in April.

On the other hand, **inter-city transport** was used by more than 157.8 million passengers, 3.2% more than the same month the previous year.

	No. of passengers (thousands)	Variation rate	
		Interannual	Accumulated interannual
City transport			
TOTAL	274,879	8.0	-1.1
Buses	168,601	10.9	-0.1
- Scheduled ¹	166,570	10.9	-0.2
General scheduled	157,270	10.7	-0.3
Special scheduled	9,300	14.2	2.6
- Unscheduled	2,031	8.6	4.3
Metropolitan	106,278	3.8	-2.6
Inter-city transport			
TOTAL	157,851	3.2	-1.6
Road transport	104,236	6.6	0.8
- Scheduled ¹	90,206	8.2	1.4
- Unscheduled	14,030	-2.4	-3.3
Rail transport	50,120	-1.4	-5.3
Air transport (domestic)	3,049	-18.2	-15.5
Sea transport (cabotage) ²	446	-35.5	-16.1

(1) Inter-city transport by road includes: general scheduled and special scheduled (students and workers)

(2) Disembarked passengers only



General scheduled city transport by bus increases 10.7%

More than 157.2 million passengers used the general scheduled city bus this past month of March, representing a 10.7% increase as compared with the same month of 2008.

By Autonomous Community, it is worth noting the interannual increases registered in Cataluña (18.1%), Comunitat Valenciana (15.1%) and Comunidad de Madrid (15.0%).

General scheduled city bus service

	No. of passengers (thousands)	Variation rate	
		interannual	Accumulated interannual
TOTAL	157,270	10.7	-0.3
Andalucía	21,743	0.5	-2.2
Aragón	11,381	6.0	-0.5
Asturias (Principado de)	3,637	1.6	-2.1
Canarias	3,455	1.2	-3.9
Castilla y León	6,635	6.6	-0.3
Castilla-La Mancha	2,033	7.4	-1.1
Cataluña	29,720	18.1	2.8
Comunitat Valenciana	12,040	15.1	-1.7
Extremadura	1,199	9.0	-4.1
Galicia	5,391	13.4	0.3
Madrid (Comunidad de)	42,949	15.0	-0.3
Murcia (Región de)	1,578	9.7	-3.0
País Vasco	6,212	4.2	-1.2
Others ¹	9,297	10.7	0.2

¹ In order to protect statistical secrecy, Autonomous Communities are grouped in those cases in which data at a company level could be identified.

Transport by special scheduled city bus service increases 14.2%

During the month of March, the special scheduled city bus service experienced an increase of 14.2% in the interannual rate. Within this, school transport registered an increase of 19.3%, whereas work transport decreased 0.3%.

Special scheduled city bus

	No. of passengers (thousands)	Variation rate	
		interannual	Accumulated interannual
TOTAL	9,300	14.2	2.6
Students	7,197	19.3	4.6
Workers	2,103	-0.3	-3.6

Transport by metropolitan increases 3.8% in the interannual rate

The number of passengers using the metropolitan increased 3.8% in March as compared with the same month in 2008. The number of passengers transported increased in Bilbao, Barcelona and Madrid, by 16.8%, 3.3% and 2.1%, respectively.

Metropolitan

	No. of passengers (thousands)	Variation rate	
		interannual	Accumulated interannual
TOTAL	106,278	3.8	-2.6
Barcelona	33,288	3.3	-2.8
Bilbao	7,587	16.8	1.2
Madrid	59,044	2.1	-4.1
Valencia ¹	6,359	8.6	9.5

¹ Estimated data by FF.CC. Generalitat Valenciana

Inter-city transport increases 3.2% as compared with March 2008

The number of passengers using inter-city transport exceeded 157.8 million during the month of March, representing an interannual increase of 3.2%.

In transport by road, the number of passengers using the bus to commute increased 6.6% in the interannual rate. Increases were registered among users of scheduled transport in both cases: general scheduled (5.7%) and special scheduled (-13.5%). Within this, the 17.1% interannual increase in student transport was of particular note. On the other hand, unscheduled transport decreased 2.4% with regard to the same month from the previous year.

Rail transport registered a rate of -1.4% an increase in users was only registered in local rail (16.5%).

Air transport and sea transport registered decreases of 18.2% and 35.5%, respectively.

Inter-city transport

	No. of passengers (thousands)	Variation rate	
		Interannual	Accumulated interannual
TOTAL	157,851	3.2	-1.6
Road transport	104,236	6.6	0.8
General scheduled	59,862	5.7	0.9
Special scheduled	30,344	13.5	2.3
- Students	23,449	17.1	5.1
- Workers	6,896	2.8	-5.7
- Unscheduled	14,030	-2.4	-3.3
Rail transport	50,120	-1.4	-5.3
RENFE	42,127	-4.2	-7.2
- AVE - Long distance ¹	1,844	-6.1	3.2
- Regional ²	2,775	-0.3	2.6
- Local	37,508	-4.4	-8.2
Narrow gauge trains	7,993	16.5	6.5
Air transport (domestic)	3,049	-18.2	-15.5
Sea transport (cabotage)	446	-35.5	-16.1

(1) Long distance includes long distance and long distance high speed

(2) Regional includes regional and regional high speed

For further information see **INEbase-www.ine.es** All press releases at: **www.ine.es/prensa/prensa_en.htm**

Press office: Telephone numbers: 91 583 93 63 / 94 08 – Fax: 91 583 90 87 - gprensa@ine.es

Information Area: Telephone: 91 583 91 00 – Fax: 91 583 91 58 – www.ine.es/infoine