

Passenger Transport Statistics
May 2008. *Provisional data*

The number of passengers using the urban transport decreased 4.9% in May as compared to the same month of the previous year

The number of passengers using inter-city transport decreased 1.9%

More than 277 million passengers used **urban transport in May**, representing a 4.9% decrease with regard to the same month of 2007. There were decreases of 5.6% in the bus service and of 3.8% in the metropolitan service in May.

On the other hand, **inter-city transport** was used by approximately 172.2 million passengers, representing a 1.9% decrease as compared with the same month of the previous year.

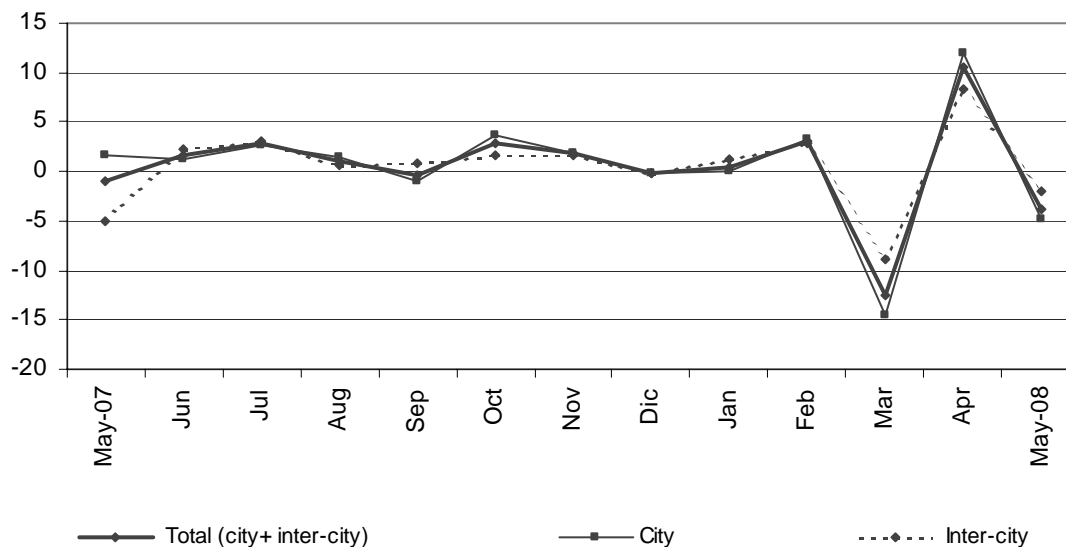
	No. of passengers (thousands)	% rate	
		Inter-annual	Accumulated inter-annual
City transport			
TOTAL	277,011	-4.90	-1.32
Buses	170,827	-5.59	-3.14
- Scheduled ¹	169,409	-5.60	-3.16
· General scheduled	159,547	-5.42	-3.16
· Special scheduled	9,862	-8.43	-3.16
- Non-scheduled	1,418	-4.36	-0.77
Metropolitan	106,184	-3.76	1.63
Inter-city transport			
TOTAL	172,195	-1.90	0.06
Road transport	116,673	-0.34	0.83
- Scheduled ¹	96,529	-1.24	0.75
- Non-scheduled	20,144	4.17	1.28
Railway transport	51,267	-5.00	-1.67
Air transport (domestic)	3,608	-5.32	1.78
Sea transport (cabotage) ^{2, 3}	647	-4.90	1.36

(1) Inter-city transport by road includes: general scheduled and especial scheduled (scholars and workers).

(2) Disembarked passengers only.

(3) Estimated data.

Variation rate in one year (%)



Scheduled urban transport by bus decreases 5.4%

More than 159.5 million passengers used the scheduled city bus in May, representing a decrease of 5.4% as compared with the same month in 2007.

Although the number of passengers decreased in almost all Autonomous Communities, it is worth noting the interannual increases recorded in Principado de Asturias (9.8%), Región de Murcia (4.9%) and Castilla-La Mancha (3.9%).

General scheduled city bus service

	No. of passengers (thousands)	% rate	
		inter-annual	Accumulated inter-annual
TOTAL	159,547	-5.42	-3.16
Andalucía	22,209	-1.69	1.47
Aragón	11,747	-1.57	2.18
Asturias (Principado de)	3,639	9.81	3.86
Canarias	4,222	-6.20	-2.09
Castilla y León	6,716	-1.83	0.52
Castilla-La Mancha	2,021	3.93	9.63
Cataluña	29,118	-9.20	-5.39
Comunitat Valenciana	12,780	-7.24	-4.06
Extremadura	1,225	-8.06	-0.45
Galicia	5,434	-0.18	0.59
Madrid (Comunidad de)	41,485	-9.69	-9.66
Murcia (Región de)	1,943	4.94	3.03
País Vasco	7,212	-2.12	3.09
Others ¹	9,796	0.07	4.15

¹ In order to protect the statistical secrecy, Autonomous Communities are grouped in those cases in which data at a company level could be identified.

Transport by special scheduled city bus decreases 8.4%

In the month of May, the special scheduled city bus service decreased 8.4% in the interannual rate.

The number of passengers on the special scheduled schoolbus service decreased 9.5%, while users of the special scheduled work bus service decreased 4.8%.

Special scheduled city bus

	No. of passengers (thousands)	% rate	
		inter-annual	Accumulated inter-annual
TOTAL	9,862	-8.43	-3.16
Scholars	7,594	-9.46	-4.35
Workers	2,268	-4.81	0.80

Fewer passengers on all Spanish metropolitan services

The number of passengers using the metropolitan decreased 3.8% in May as compared with the same month in 2007.

The number of passengers decreased in all Spanish metropolitan services in the interannual rate, particularly in Valencia (6.0%) and in Madrid (4.2%).

Metropolitan

	No. of passengers (thousands)	% rate	
		inter-annual	Accumulated inter-annual
TOTAL	106,184	-3.76	1.63
Barcelona	32,990	-2.89	3.45
Bilbao	7,729	-2.08	1.02
Madrid	59,497	-4.22	1.21
Valencia	5,968	-6.02	-2.98

Inter-city transport decreases 1.9% as compared with May 2007

The number of passengers on inter-city transport exceeded 172.1 million in May, representing an interannual decrease of 1.9%.

In transport by road, the number of passengers using the bus to commute decreased 0.3%. Within this, all types of transport decreased, except unscheduled transport, which increased 4.2%.

Railway transport recorded a 5.0% decrease, with both RENFE (Spanish National Railway Network) (4.5%), and Narrow Track Spanish Railways (7.9%) experiencing a decrease. It is worth noting the increase in passengers on AVE long distance (24.8%).

Conversely, air transport recorded a 5.3% decrease in users in May, as compared with the same month the previous year.

Inter-city Transport

	No. of passengers (thousands)	% rate	
		Interannual	Accumulated interannual
TOTAL	172,195	-1.90	0.06
Road transport	116,673	-0.34	0.83
General Scheduled	61,898	-0.76	0.77
Special scheduled	34,631	-2.08	0.73
- Scholars	25,820	-2.57	-0.49
- Workers	8,811	-0.60	4.18
Non-scheduled	20,144	4.17	1.28
Railway transport	51,267	-5.00	-1.67
RENFE	43,830	-4.49	-1.66
- AVE - Long distance ²	2,004	24.78	20.17
- Regional ³	2,785	-3.10	-0.49
- Local	39,041	-5.72	-2.53
Narrow gauge trains	7,437	-7.91	-1.68
Air (domestic)	3,608	-5.32	1.78
Sea transport (cabotage) ¹	647	-4.90	1.36

(1) Estimated data

(2) Long Distance includes long distance and long distance high speed.

(3) Regional includes regional and regional high speed.

For further information see INEbase-www.ine.es All press releases at: www.ine.es/prensa/prensa.htm

Press office: Telephone numbers: 91 583 93 63 / 94 08 – Fax: 91 583 90 87 - gprensa@ine.es
Information Area: Telephone: 91 583 91 00 – Fax: 91 583 91 58 – www.ine.es/infoine