

**Passenger Transport Statistics
May 2009. Provisional data**

The number of passengers using city transport decreases 2.9% in May, as compared with the same month the previous year

The number of passengers using inter-city transport decreases 3.2% in the interannual rate

More than 266 million passengers used the **city transport** service in May, representing a 2.9% decrease with regard to the same month of 2008. Decreases of 2.5% in the bus service, and 3.5% in the metropolitan service, were recorded in May.

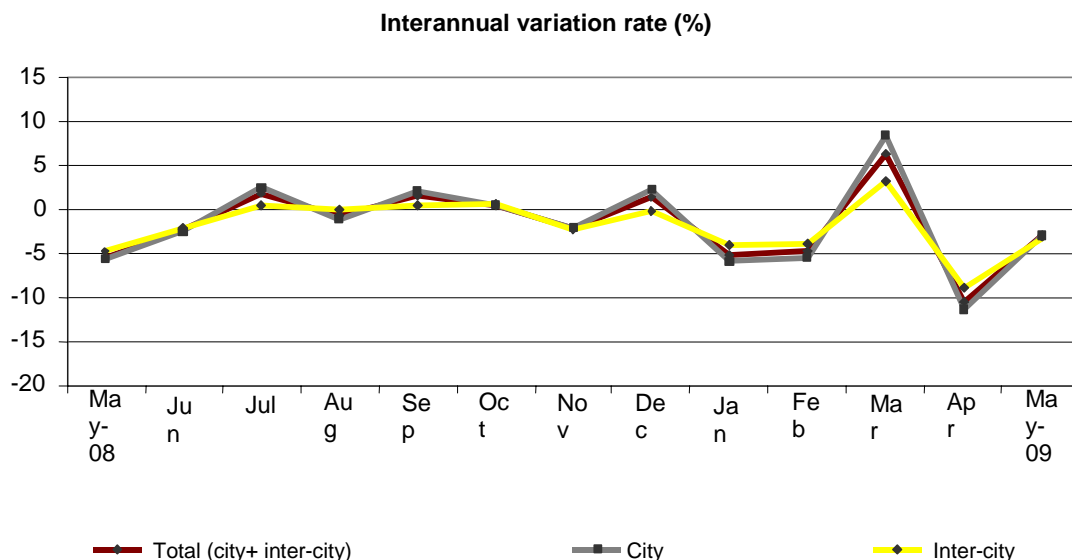
On the other hand, **inter-city transport** was used by more than 161.5 million passengers, 3.2% less than the same month the previous year.

	No. of passengers (thousands)	Variation rate	
		Interannual	Accumulated interannual
City transport			
TOTAL	266,674	-2.9	-3.7
Buses	164,252	-2.5	-2.5
- Scheduled ¹	162,052	-2.5	-2.5
General scheduled	152,992	-2.5	-2.6
Special scheduled	9,060	-2.2	-1.1
- Unscheduled	2,200	-8.1	-2.7
Metropolitan	102,422	-3.5	-5.5
Inter-city transport			
TOTAL	161,618	-3.2	-3.4
Road transport	107,821	-3.2	-1.8
- Scheduled ¹	91,101	-1.4	-1.1
- Unscheduled	16,720	-12.2	-6.3
Rail transport	49,975	-2.5	-6.0
Air transport (domestic)	3,138	-13.0	-13.7
Sea transport (cabotage) ^{2, 3}	684	-5.5	-5.9

¹ Inter-city transport by road includes: general scheduled and special scheduled (students and workers)

² Disembarked passengers only

³ Estimated data



General scheduled city transport by bus decreases 2.5%

Almost 153 million passengers used the general scheduled city bus this past month of May, representing a 2.5% decrease as compared with the same month of 2008.

There were decreases in the number of city bus passengers in all Autonomous Communities, except in Comunidad de Madrid, which recorded an interannual rate of 1.4%.

General scheduled city bus service

	No. of passengers (thousands)	Variation rate	
		interannual	Accumulated interannual
TOTAL	152,992	-2.5	-2.6
Andalucía	21,966	-0.2	-2.5
Aragón	11,042	-4.8	-2.3
Asturias (Principado de)	3,522	-7.1	-4.5
Canarias	3,468	-9.9	-7.1
Castilla y León	6,459	-2.9	-3.0
Castilla-La Mancha	1,982	-2.1	-2.9
Cataluña	27,405	-4.4	-2.4
Comunitat Valenciana	12,043	-5.3	-6.2
Extremadura	1,169	-5.5	-7.3
Galicia	5,309	-2.2	-2.2
Madrid (Comunidad de)	41,811	1.4	-0.2
Murcia (Región de)	1,542	-8.4	-7.6
País Vasco	5,867	-6.4	-5.5
Others ¹	9,407	-3.1	-3.4

¹ In order to protect statistical secrecy, Autonomous Communities are grouped in those cases in which data at a company level could be identified.

Transport by special scheduled city bus service decreases 2.2%

During the month of May, the special scheduled city bus service experienced a decrease of 2.2% in the interannual rate. This decrease was observed by the two types of transport that comprise it: for students (0.8%) and for workers (7.0%).

Special scheduled city bus

	No. of passengers (thousands)	Variation rate	
		interannual	Accumulated interannual
TOTAL	9,060	-2.2	-1.1
Students	7,088	-0.8	0.5
Workers	1,972	-7.0	-6.0

Transport by metropolitan decreases 3.5% in the interannual rate

The number of passengers using the metropolitan decreased 3.5% in May as compared with the same month in 2008. The number of passengers transported decreased in all Spanish metropolitan services.

Metropolitan

	No. of passengers (thousands)	Variation rate	
		interannual	Accumulated interannual
TOTAL	102,422	-3.5	-5.5
Barcelona	32,391	-1.8	-4.5
Bilbao	7,501	-2.9	-3.1
Madrid	56,795	-4.5	-6.8
Valencia ¹	5,735	-3.9	0.1

¹ Estimated data by FF.CC. Generalitat Valenciana

Inter-city transport decreases 3.2% as compared with May 2008

The number of passengers using inter-city transport exceeded 161.5 million during the month of May, representing an interannual decrease of 3.2%.

In transport by road, the number of passengers using the bus to commute decreased 3.2% in the interannual rate. Decreases were registered among users of scheduled transport in both cases: general scheduled (-0.7%) and special scheduled (-2.7%). On the other hand, unscheduled transport decreased 12.2% with regard to the same month from the previous year.

Air transport and transport by railway recorded decreases 13% and 2.5%, respectively, in May.

Inter-city transport

	No. of passengers (thousands)	Variation rate	
		Interannual	Accumulated interannual
TOTAL	161,618	-3.2	-3.4
Road transport	107,821	-3.2	-1.8
General scheduled	58,677	-0.7	-0.9
Special scheduled	32,424	-2.7	-1.6
- Students	25,281	-0.5	0.2
- Workers	7,143	-9.7	-7.0
- Unscheduled	16,720	-12.2	-6.3
Rail transport	49,975	-2.5	-6.0
RENFE	42,176	-3.8	-7.6
- AVE - Long distance ¹	2,003	-0.1	3.2
- Regional ²	2,957	6.2	3.0
- Local	37,216	-4.7	-8.8
Narrow gauge trains	7,799	4.9	3.8
Air transport (domestic)	3,138	-13.0	-13.7
Sea transport (cabotage) ³	684	-5.5	-5.9

(1) Long distance includes long distance and long distance high speed

(2) Regional includes regional and regional high speed

3 Estimated data

For further information see **INEbase-www.ine.es** All press releases at: **www.ine.es/prensa/prensa_en.htm**

Press office: Telephone numbers: 91 583 93 63 / 94 08 – Fax: 91 583 90 87 - gprensa@ine.es

Information Area: Telephone: 91 583 91 00 – Fax: 91 583 91 58 – www.ine.es/infoine