

Passenger Transport Statistics
June 2008. Provisional data

The number of passengers using the urban transport decreased 2.6% in June as compared to the same month of the previous year

The number of passengers using inter-city transport decreased 3.5%

More than 268 million passengers used **urban transport in June**, representing a 2.6% decrease with regard to the same month of 2007. There were decreases of 3.2% in the bus service and of 1.5% in the metropolitan service in June.

On the other hand, **inter-city transport** was used by more than 162.6 million passengers, representing a 3.5% decrease as compared with the same month of the previous year.

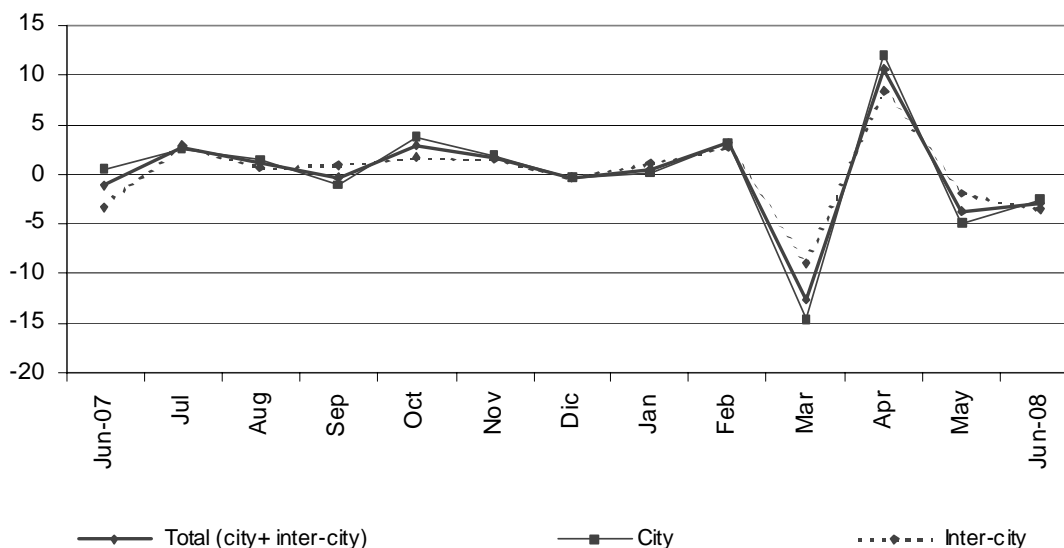
	No. of passenge (thousands)	% rate	
		Inter-annual	Accumulated inter-annual
City transport			
TOTAL	268,375	-2.58	-1.53
Buses	165,420	-3.24	-3.16
- Scheduled ¹	164,112	-3.18	-3.16
General scheduled	156,399	-3.16	-3.16
Special scheduled	7,713	-3.54	-3.21
- Non-scheduled	1,308	-10.40	-2.58
Metropolitan	102,956	-1.51	1.11
Inter-city transport			
TOTAL	162,621	-3.47	-0.54
Road transport	109,354	-3.15	0.14
- Scheduled ¹	89,720	-1.63	0.36
- Non-scheduled	19,634	-9.54	-1.10
Railway transport ³	48,665	-4.14	-2.07
Air transport (domestic)	3,693	-6.17	0.28
Sea transport (cabotage) ^{2, 3}	909	6.35	4.62

(1) Inter-city transport by road includes: general scheduled and special scheduled (scholars and workers).

(2) Disembarked passengers only.

(3) Estimated data.

Variation rate in one year (%)



General scheduled urban transport by bus decreases 3.2%

Almost 156.4 million passengers used the general scheduled city bus in June, representing a decrease of 3.2% as compared with the same month in 2007.

Although the number of passengers decreased in almost all Autonomous Communities, it is worth noting the interannual increases recorded in Aragón (7.7%), Región de Murcia (5.7%) and Principado de Asturias (1.2%).

General scheduled city bus service

	No. of passengers (thousands)	% rate inter-annual	Accumulated inter-annual
TOTAL	156,399	-3.16	-3.16
Andalucía	20,797	0.36	1.29
Aragón	12,230	7.73	3.12
Asturias (Principado de)	3,541	1.15	3.40
Canarias	4,930	-1.62	-2.01
Castilla y León	6,251	-0.35	0.38
Castilla-La Mancha	1,834	-2.09	7.61
Cataluña	28,618	-4.64	-5.27
Comunitat Valenciana	12,642	-3.45	-3.96
Extremadura	1,128	-1.51	-0.62
Galicia	5,229	0.72	0.61
Madrid (Comunidad de)	41,902	-7.93	-9.37
Murcia (Región de)	1,768	5.70	3.44
País Vasco	6,055	-8.73	1.12
Others ¹	9,474	-0.35	3.36

¹ In order to protect the statistical secrecy, Autonomous Communities are grouped in those cases in which data at a company level could be identified.

Transport by special scheduled city bus decreases 3.5%

In the month of June, the special scheduled city bus service decreased 3.5% in the interannual rate.

The number of passengers on the special scheduled schoolbus service decreased 4.4%, while users of the special scheduled work bus service decreased 1.1%.

Special scheduled city bus

	No. of passengers (thousands)	% rate	
		inter-annual	Accumulated inter-annual
TOTAL	7,713	-3.54	-3.21
Scholars	5,649	-4.41	-4.36
Workers	2,064	-1.08	0.51

Transport by metropolitan decreases 1.5% in the interannual rate

The number of passengers using the metropolitan decreased 1.5% in June as compared with the same month in 2007.

The number of passengers increased in metropolitan services, in Barcelona (0.3%) and in Valencia (0.1%) and decreased in Madrid (2.5%).

Metropolitan

	No. of passengers (thousands)	% rate	
		inter-annual	Accumulated inter-annual
TOTAL	102,955	-1.51	1.11
Barcelona	31,201	0.30	2.94
Bilbao ¹	7,232	-2.08	0.50
Madrid	58,815	-2.54	0.58
Valencia	5,707	0.12	-2.49

(1) Estimated data.

Inter-city transport decreases 3.5% as compared with June 2007

The number of passengers on inter-city transport exceeded 162.6 million in June, representing an interannual decrease of 3.5%.

In transport by road, the number of passengers using the bus to commute decreased 3.2%. Within this, all types of transport decreased, with non-scheduled transport, which decreased 9.5%, of particular note.

Conversely, the number of air transport passengers decreased 6.2% in June, as compared with the same month the previous year.

Inter-city Transport

	No. of passengers (thousands)	% rate	
		Interannual	Accumulated interannual
TOTAL	162,621	-3.47	-0.54
Road transport	109,354	-3.15	0.14
General Scheduled	60,414	-1.73	0.34
Special scheduled	29,306	-1.42	0.40
- Scholars	20,401	-1.90	-0.70
- Workers	8,905	-0.32	3.41
Non-scheduled	19,634	-9.54	-1.10
Railway transport	48,665	-4.14	-2.07
RENFE ¹	41,411	-4.39	-2.11
- AVE - Long distance ²	2,068	24.80	21.02
- Regional ³	2,622	-3.10	-0.94
- Local	36,721	-5.72	-3.05
Narrow gauge trains	7,254	-2.72	-1.86
Air (domestic)	3,693	-6.17	0.28
Sea transport (cabotage) ¹	909	6.35	4.62

(1) Estimated data

(2) Long Distance includes long distance and long distance high speed.

(3) Regional includes regional and regional high speed.

For further information see INEbase-www.ine.es/en/welcome_en.htm All press releases at: www.ine.es/en/prensa/prensa_en.htm

Press office: Telephone: 91 583 93 63 / 94 08 – Fax: 91 583 90 87 - gprensa@ine.es

Information area: Telephone: 91 583 91 00 – Fax: 91 583 91 58 – www.ine.es/infoine