

Passenger Transport Statistics
June 2009. Provisional data

The number of passengers using city transport decreases 2.5% in June, as compared with the same month the previous year

The number of passengers using inter-city transport decreases 4.1% in the interannual rate

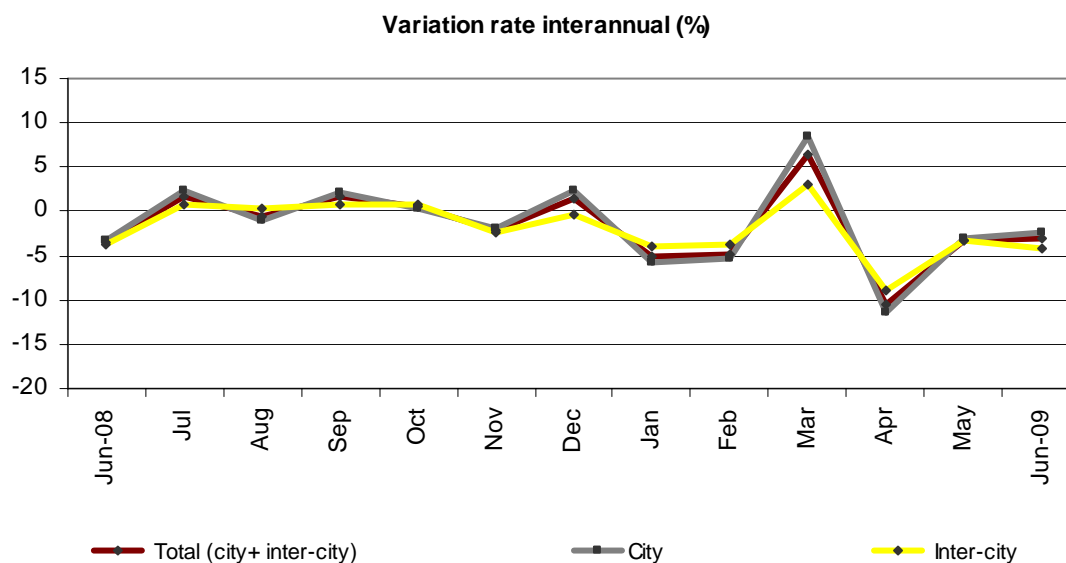
More than 259.5 million passengers used the **city transport** service in June, representing a 2.5% decrease with regard to the same month of 2008. Decreases of 1.0% in the bus service, and 4.9% in the metropolitan service, were recorded in June.

On the other hand, **inter-city transport** was used by more than 155 million passengers, 4.1% less than the same month the previous year.

	No. of passengers (thousands)	Variation rate	
		Interannual	Accumulated interannual
City transport			
TOTAL	259,529	-2.5	-3.5
Buses	161,489	-1.0	-2.3
- Scheduled ¹	159,150	-1.0	-2.3
General scheduled	151,261	-1.2	-2.4
Special scheduled	7,889	2.0	-0.6
- Unscheduled	2,339	2.8	-1.6
Metropolitan	98,040	-4.9	-5.4
Inter-city transport			
TOTAL	155,576	-4.1	-3.6
Road transport	103,445	-2.9	-2.0
- Scheduled ¹	85,978	-2.4	-1.3
- Unscheduled	17,467	-5.1	-6.1
Rail transport	47,975	-6.4	-6.3
Air transport (domestic)	3,353	-9.2	-12.9
Sea transport (cabotage)	803	-4.9	-5.6

(1) Inter-city transport by road includes: general scheduled and special scheduled (students and workers)

(2) Disembarked passengers only



General scheduled city transport by bus decreases 1.2%

Almost 151.2 million passengers used the general scheduled city bus this past month of June, representing a 1.2% decrease as compared with the same month of 2008.

By Autonomous Community, it is worth noting the interannual increases registered in Castilla-La Mancha and Comunidad de Madrid (5.0% and 2.6% respectively).

General scheduled city bus service

	No. of passengers (thousands)	Variation rate	
		interannual	Accumulated interannual
TOTAL	151,261	-1.2	-2.4
Andalucía	20,464	-1.7	-2.4
Aragón	10,992	-9.1	-3.5
Asturias (Principado de)	3,599	-1.1	-4.0
Canarias	3,515	-4.7	-6.7
Castilla y León	6,326	1.3	-2.3
Castilla-La Mancha	1,924	5.0	-1.7
Cataluña	25,946	-4.8	-2.8
Comunitat Valenciana	12,340	-2.2	-5.5
Extremadura	1,098	-3.2	-6.7
Galicia	5,267	0.7	-1.7
Madrid (Comunidad de)	42,792	2.6	0.2
Murcia (Región de)	1,438	-6.8	-7.4
País Vasco	5,805	1.1	-4.5
Others ¹	9,755	2.9	-2.3

¹ In order to protect statistical secrecy, Autonomous Communities are grouped in those cases in which data at a company level could be identified.

Transport by special scheduled city bus service decreases 2%

During the month of June, the special scheduled city bus service experienced an increase of 2% in the interannual rate. Within this, school transport registered an increase of 4.3%, whereas work transport decreased 4.3%.

Special scheduled city bus

	No. of passengers (thousands)	Variation rate	
		interannual	Accumulated interannual
TOTAL	7,889	2.0	-0.6
Students	5,964	4.3	1.1
Workers	1,925	-4.3	-5.7

Transport by metropolitan decreases 4.9% in the interannual rate

The number of passengers using the metropolitan decreased 4.9% in June as compared with the same month in 2008.

Metropolitan

	No. of passengers (thousands)	Variation rate	
		interannual	Accumulated interannual
TOTAL	98,040	-4.9	-5.4
Barcelona	30,471	-2.3	-4.2
Bilbao	7,381	-0.1	-2.6
Madrid	54,594	-7.2	-7.0
Valencia ¹	5,594	-2.0	-0.2

¹ Estimated data by FF.CC. Generalitat Valenciana

Inter-city transport decreases 4.1% as compared with June 2008

The number of passengers using inter-city transport exceeded 155.5 million during the month of June, representing an interannual decrease of 4.1%.

In transport by road, the number of passengers using the bus to commute decreased 2.9% in the interannual rate. Decreases were registered among users of scheduled transport in both cases: general scheduled (-2.4%) and special scheduled (-2.5%). On the other hand, unscheduled transport decreased 5.1% with regard to the same month from the previous year.

Transport by railway recorded a rate of -6.4%, with decreases in the number of users in all modalities, except Narrow track. Lastly, air transport decreased 9.2% as compared with June 2008.

Inter-city transport

	No. of passengers (thousands)	Variation rate	
		Interannual	Accumulated interannual
TOTAL	155,576	-4.1	-3.6
Road transport	103,445	-2.9	-2.0
General scheduled	58,613	-2.4	-1.1
Special scheduled	27,365	-2.5	-1.7
- Students	20,189	-1.1	0.0
- Workers	7,176	-6.5	-6.9
- Unscheduled	17,467	-5.1	-6.1
Rail transport	47,975	-6.4	-6.3
RENFE	40,429	-7.7	-7.6
- AVE - Long distance ¹	1,974	-7.8	1.1
- Regional ²	2,774	-1.4	2.2
- Local	35,681	-8.1	-8.7
Narrow gauge trains	7,546	1.3	1.9
Air transport (domestic)	3,353	-9.2	-12.9
Sea transport (cabotage)	803	-4.9	-5.6

(1) Long distance includes long distance and long distance high speed

(2) Regional includes regional and regional high speed

For further information see **INEbase-www.ine.es** All press releases at: **www.ine.es/prensa/prensa_en.htm**

Press office: Telephone numbers: 91 583 93 63 / 94 08 – Fax: 91 583 90 87 - gprensa@ine.es

Information Area: Telephone: 91 583 91 00 – Fax: 91 583 91 58 – www.ine.es/infoine