

10 September 2009

**Passenger Transport Statistics**  
**July 2009. Provisional data**

**The number of passengers using city transport decreases 4.4% in July as compared with the same month the previous year**

**The number of passengers using inter-city transport decreases 3.6% in the interannual rate**

More than 240.1 million passengers used the **city bus** service in July, representing a 4.4% decrease with regard to the same month of 2008. There were decreases of 4.4% in July, both in the city bus service and in the metropolitan service.

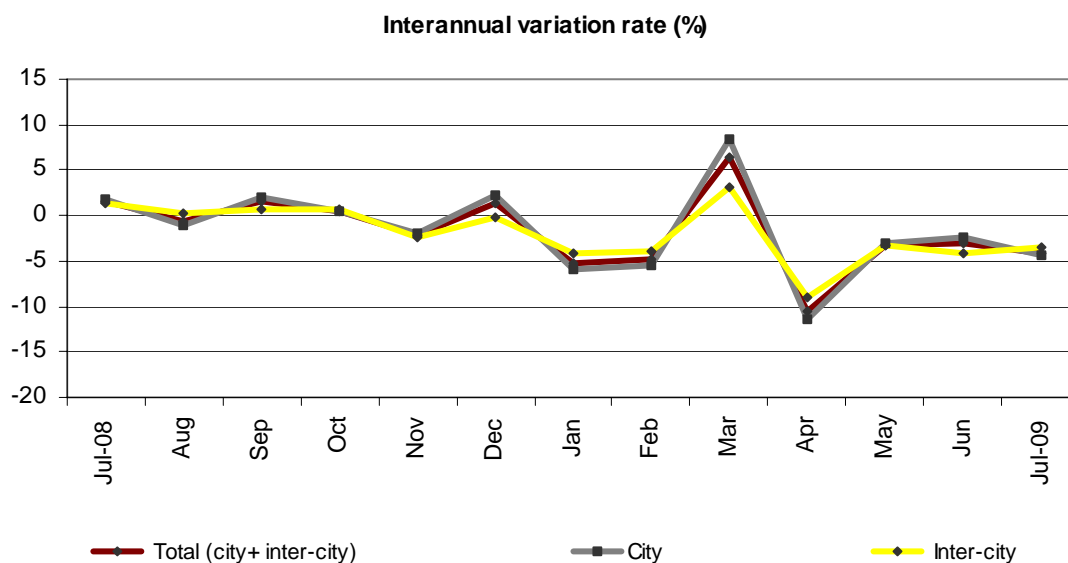
**On the other hand, inter-city transport** was used by more than 139.2 million passengers, representing a 3.6% decrease as compared with the same month the previous year.

	No. of passengers (thousands)	Variation rate	
		Interannual	Accumulated interannual
<b>City transport</b>			
<b>TOTAL</b>	<b>240,114</b>	<b>-4.4</b>	<b>-3.6</b>
Buses	147,648	-4.4	-2.5
- Scheduled	145,317	-4.4	-2.6
General scheduled	142,769	-4.4	-2.6
Special scheduled	2,548	-7.4	-1.0
- Unscheduled	2,331	-4.6	-2.1
Metropolitan	92,466	-4.4	-5.3
<b>Inter-city transport</b>			
<b>TOTAL</b>	<b>139,237</b>	<b>-3.6</b>	<b>-3.6</b>
Road transport	87,765	-2.1	-2.0
- Scheduled <sup>1</sup>	70,595	-1.5	-1.3
- Unscheduled	17,169	-4.7	-5.8
Rail transport <sup>3</sup>	46,546	-6.3	-6.3
Air transport (domestic)	3,885	-2.5	-11.3
Sea transport (cabotage) <sup>2, 3</sup>	1,042	-7.0	-5.0

<sup>1</sup> Inter-city transport by road includes: general scheduled and special scheduled (students and workers)

<sup>2</sup> Disembarked passengers only

<sup>3</sup> Estimated data



## Scheduled city transport by bus decreases 4.4%

Approximately 142.8 million passengers used the scheduled city bus in July, representing a decrease of 4.4% as compared with the same month in 2008. The number of passengers transported decreased in all Autonomous Communities.

## General scheduled city bus service

	No. of passengers (thousands)	Variation rate	
		interannual	Accumulated interannual
<b>TOTAL</b>	<b>142,769</b>	<b>-4.4</b>	<b>-2.6</b>
Andalucía	19,058	-1.4	-2.3
Aragón	9,673	-19.4	-5.9
Asturias (Principado de)	3,696	-2.3	-3.7
Canarias	3,436	-6.0	-6.6
Castilla y León	5,731	-2.5	-2.3
Castilla-La Mancha	1,710	-2.9	-1.8
Cataluña	26,065	-3.8	-2.9
Comunitat Valenciana	11,566	-6.4	-5.7
Extremadura	915	-6.1	-6.6
Galicia	5,000	-0.4	-1.6
Madrid (Comunidad de)	38,519	-3.2	-0.2
Murcia (Región de)	1,254	-3.8	-7.0
País Vasco	5,686	-0.4	-3.9
Others <sup>1</sup>	10,461	-1.2	-2.1

<sup>1</sup> In order to protect statistical secrecy, Autonomous Communities are grouped in those cases in which data at a company level could be identified.

### The special scheduled city bus service decreases 7.4%

In the month of July, the special scheduled city bus service decreased 7.4% in the interannual rate. The number of passengers transported decreased in both types of transport: 5.0% on the special scheduled school bus service and 8.0% on the special scheduled work bus service.

#### Special scheduled city bus

	No. of passengers (thousands)	Variation rate	
		interannual	Accumulated interannual
<b>TOTAL</b>	<b>2,548</b>	<b>-7.4</b>	<b>-1.0</b>
Students	471	-5.0	1.0
Workers	2,077	-8.0	-6.0

### Transport by metropolitan decreases 4.4% in the interannual rate

The number of passengers using the metropolitan experienced a 4.4% decrease in July with respect to the same month from 2008. Worth noting was the increase of 5.9% in the number of Bilbao metropolitan users.

#### Metropolitan

	No. of passengers (thousands)	Variation rate	
		interannual	Accumulated interannual
<b>TOTAL</b>	<b>92,466</b>	<b>-4.4</b>	<b>-5.3</b>
Barcelona	31,257	-2.0	-3.9
Bilbao	6,827	5.9	-1.6
Madrid	48,841	-7.8	-7.1
Valencia <sup>1</sup>	5,541	3.2	0.3

<sup>1</sup> Estimated data by FF.CC. Generalitat Valenciana

## Inter-city transport decreases 3.6% as compared with July 2008

The number of passengers on inter-city transport exceeded 139.2 million in July, representing an interannual decrease of 3.6%.

In transport by road, the number of passengers using the bus to commute decreased 2.1% with respect to the same month from the previous year. Decreases were registered among users of scheduled transport in the two modalities: general scheduled (1.3%) and special scheduled (2.9%). On the other hand, unscheduled transport decreased 4.7% with regard to the same month from the year 2008.

The number of passengers using the railway decreased 6.3% as compared with July 2008. On the other hand, air transport decreased 2.5% in the interannual rate.

### Inter-city transport

	No. of passengers (thousands)	Variation rate	
		Interannual	Accumulated interannual
<b>TOTAL</b>	<b>139,237</b>	<b>-3.6</b>	<b>-3.6</b>
<b>Road transport</b>	<b>87,764</b>	<b>-2.1</b>	<b>-2.0</b>
General scheduled	62,043	-1.3	-1.1
Special scheduled	8,552	-2.9	-1.8
- Students	1,098	4.4	0.0
- Workers	7,454	-3.9	-6.4
- Unscheduled	17,169	-4.7	-5.8
<b>Rail transport</b>	<b>46,546</b>	<b>-6.3</b>	<b>-6.3</b>
RENFE <sup>3</sup>	39,379	-6.3	-7.5
- AVE - Long distance <sup>1</sup>	2,114	-8.7	-0.6
- Regional <sup>2</sup>	2,882	-1.6	1.6
- Local	34,383	-6.5	-8.4
Narrow gauge trains	7,167	-6.2	0.7
<b>Air transport (domestic)</b>	<b>3,885</b>	<b>-2.5</b>	<b>-11.3</b>
<b>Sea transport (cabotage)<sup>3</sup></b>	<b>1,042</b>	<b>-7.0</b>	<b>-5.0</b>

<sup>1</sup> Long distance includes long distance and long distance high speed

<sup>2</sup> Regional includes regional and regional high speed

<sup>3</sup> Estimated data

For further information see **INEbase-[www.ine.es](http://www.ine.es)** All press releases at: **[www.ine.es/prensa/prensa\\_en.htm](http://www.ine.es/prensa/prensa_en.htm)**

**Press office:** Telephone numbers: 91 583 93 63 / 94 08 – Fax: 91 583 90 87 - [gprensa@ine.es](mailto:gprensa@ine.es)

**Information Area:** Telephone number: 91 583 91 00 – Fax: 91 583 91 58 – [www.ine.es/infoine](http://www.ine.es/infoine)