

## Passenger Transport Statistics (PT)

July 2013. *Provisional data*

**The number of passengers using public transport decreases 1.9% in July, as compared with the same month of the previous year**

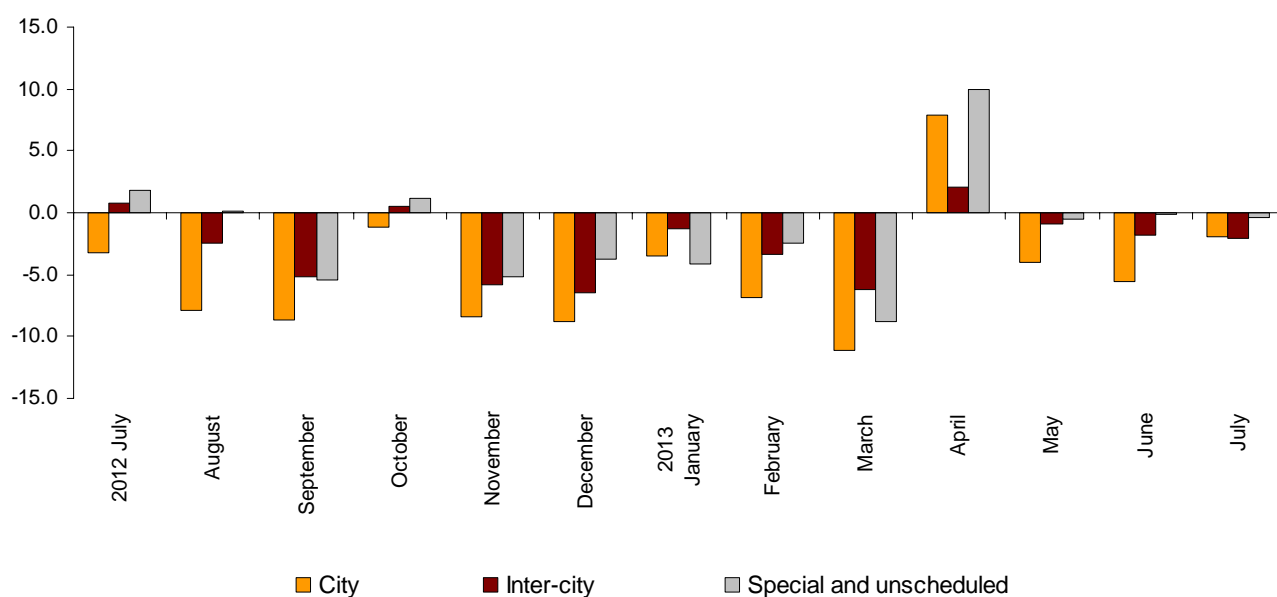
**The city transport decreases 1.9% in the annual rate and the inter-city transport 2.1%**

### Passengers transport evolution

More than 344.8 million passengers used public transport in July, 1.9% less than the same month of the previous year.

The city transport decreased 1.9% in the annual rate and the inter-city transport 2.1%. Within this, the most significant drop was that of the air transport, with a rate of – 16.5%.

**Passenger transport annual performance**  
**Type of transport**



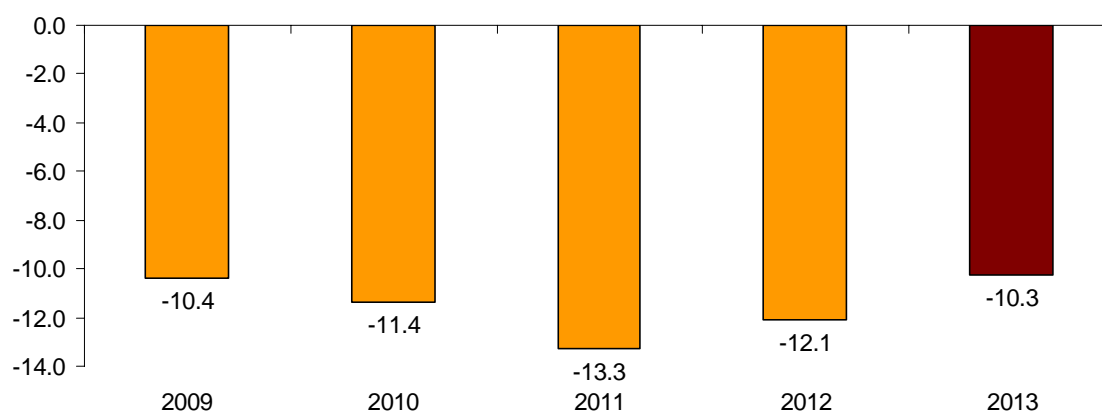
**Passengers transport annual evolution, by type of transport**

	City	Inter-city	Special and unscheduled
2012 July	-3.3	0.8	1.8
August	-7.9	-2.4	0.2
September	-8.7	-5.2	-5.4
October	-1.2	0.5	1.2
November	-8.4	-5.8	-5.2
December	-8.8	-6.4	-3.7
2013 January	-3.5	-1.3	-4.1
February	-6.9	-3.3	-2.5
March	-11.1	-6.2	-8.8
April	7.8	2.1	9.9
May	-4.1	-0.9	-0.5
June	-5.5	-1.8	-0.1
July	-1.9	-2.1	-0.4

**Monthly rate evolution<sup>1</sup>**

The variation rate for the number of passengers on public transport in July as compared with June was -10.3%. This monthly rate was the least low in the last five years.

**Monthly rate evolution  
(month-on-month variation for July as compared with June)**



<sup>1</sup> In order to contribute to the analysis and interpretation of the data, this section has been added including the performance of the monthly rate for the number of users of public transport in recent years. The month-on-month rates of this type of series may have a seasonal behaviour; therefore it is recommended to evaluate them in relation to the item of data for the same month in previous years.

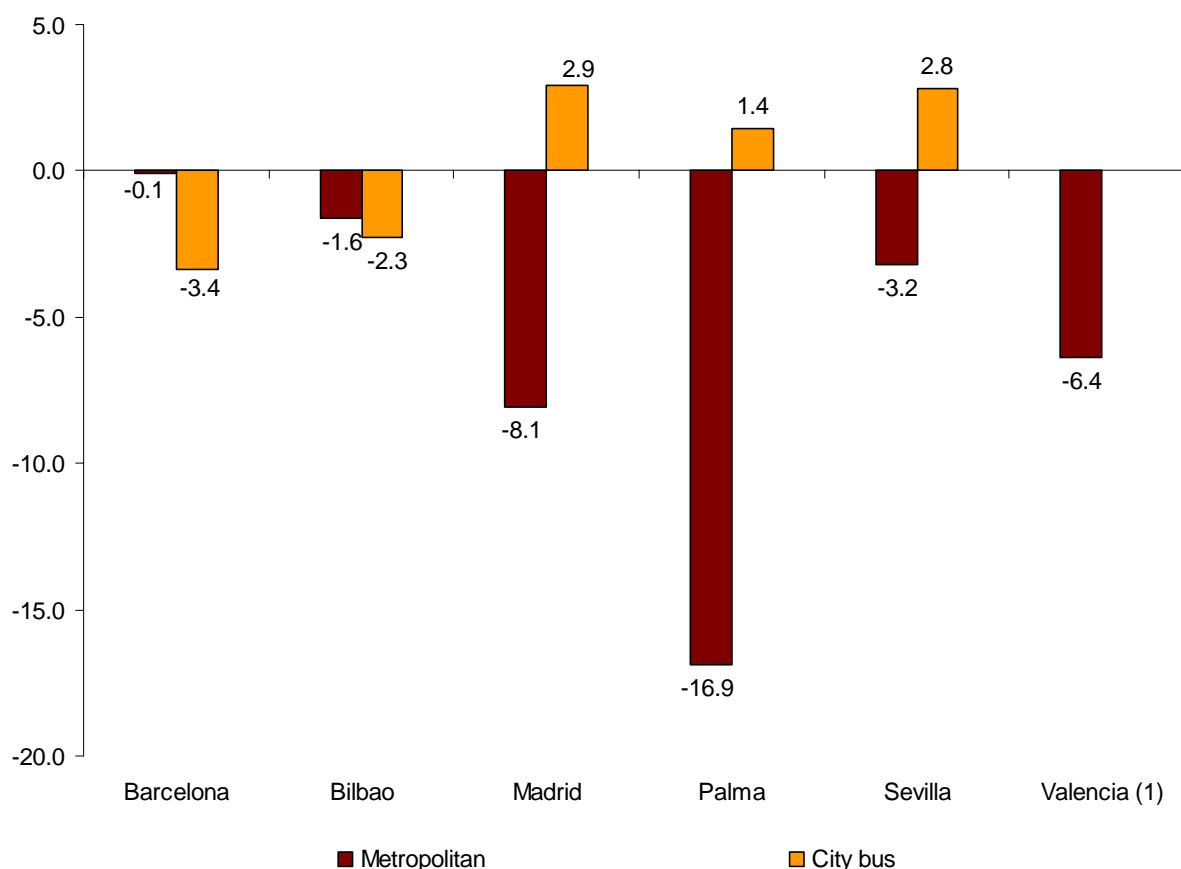
## City transport

City transport was used by nearly 212.3 million passengers in July, 1.9% less than the same month of the previous year.

Metropolitan transport registered a 4.6% decrease, whereas bus transport remained the same (0.0%).

According to the data of the cities providing metropolitan transport, all the cities registered a decrease, while bus transport registered an increase in Madrid (2.9%), Sevilla (2.8%) and Palma (1.4%).

**Interannual rate of city transport passengers in cities with a Metropolitan**

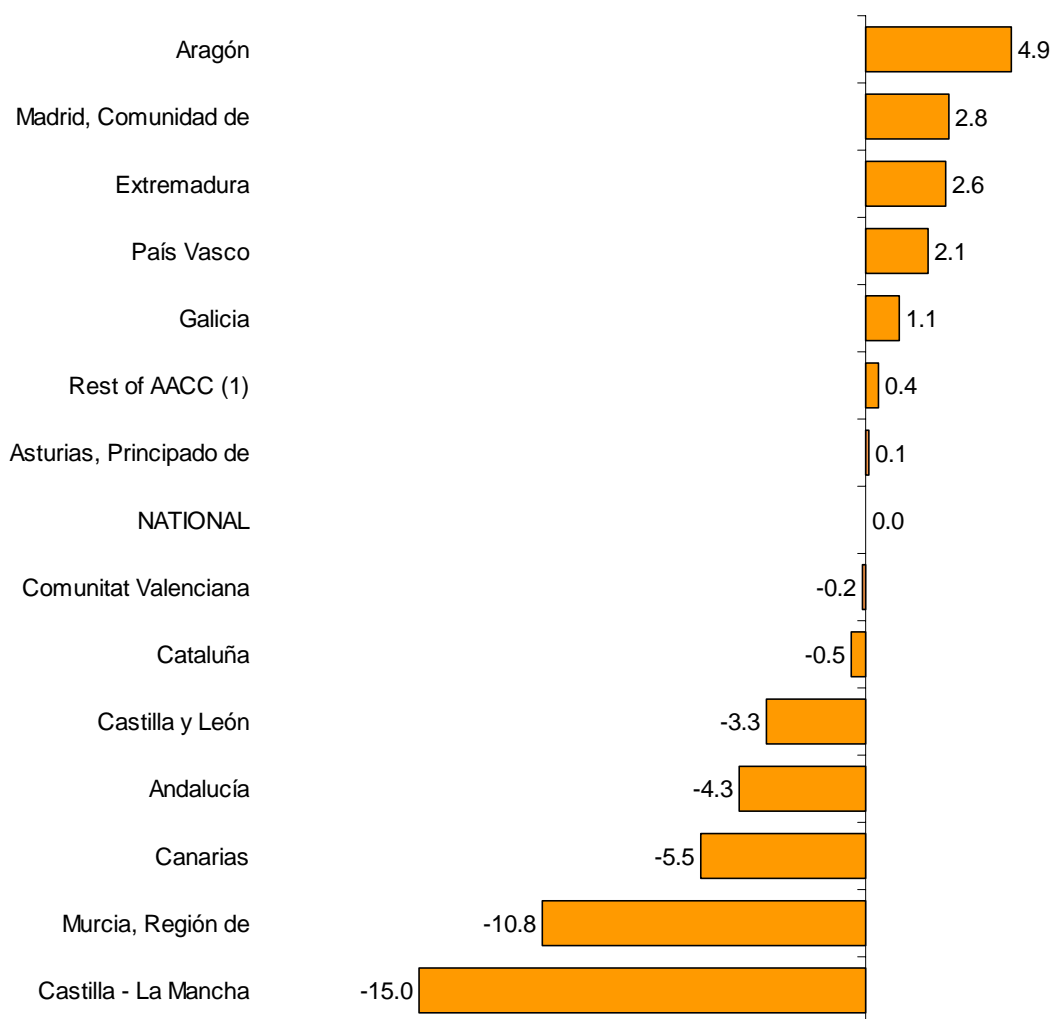


<sup>(1)</sup>The publication of the city transport by bus in Valencia is not allowed.

Aragón registered the greatest annual increase in the number of passengers in the transport by bus (4.9%)

In turn, the Autonomous Communities that registered the greatest decreases are Castilla-La Mancha (–15.0%) and Región de Murcia (–10.8%).

**Annual rate of the number of passengers  
City transport by bus**



(1) In order to protect statistical secrecy, the passengers of the Autonomous Communities of Illes Balears, Cantabria, Comunidad Foral de Navarra and La Rioja and of the Autonomous Cities of Ceuta and Melilla have been grouped.

## Inter-city transport

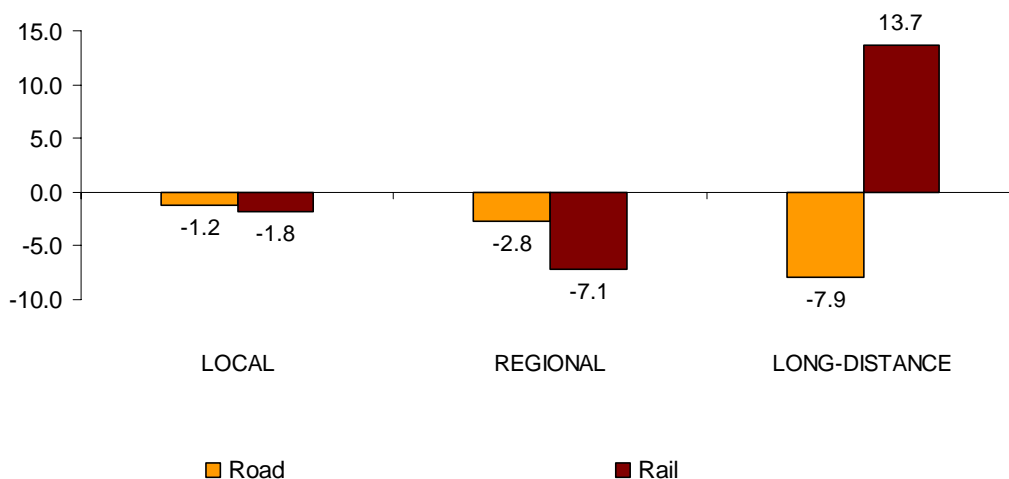
More than 108.7 million passengers used inter-city transport in July, indicating a 2.1% decrease as compared with the same month of 2012.

Air transport registered the greatest decrease (–16.5). Bus and rail transport decreased 1.9% and 1.4, respectively.

Local distance passengers decreased 1.2% for bus transport and 1.8% for rail transport. Regional passengers distance decreased 2.8% for bus transport and 7.1% for rail transport.

Finally, long-distance passengers decreased 7.9% in bus transport while rail transport increased 13.7%.

**Annual rate of the number of passengers  
Inter-city transport by type of transport and distance**



## Special and unscheduled transport

Over 23.7 million passengers used special and unscheduled transport in July, indicating a 0.4% decrease in the annual rate.

The number of special transport passengers increased 0.5%, reaching over 8.4 million users. Within this, school transport decreased 3.9% while work transport increased 1.0%.

In turn, unscheduled transport decreased 1.0%, as compared with the same month of the previous year, reaching more than 15.2 million passengers.

## Passenger Transport Statistics

**July 2013**

Provisional data

### 1. Passenger transport

	Passengers transported (thousands)	% variation	
		Annual	Year-to-date average
BY TYPE OF TRANSPORT	344,845	-1.9	-3.0
City transport	212,342	-1.9	-3.8
Inter-city transport	108,753	-2.1	-1.9
Special and unscheduled transport	23,750	-0.4	-1.2

### 2. City transport

	Passengers transported (thousands)	% variation	
		Annual	Year-to-date average
CITY TRANSPORT	212,342	-1.9	-3.8
Metropolitan	84,922	-4.6	-6.6
Bus <sup>(1)</sup>	127,421	0.0	-1.9

<sup>(1)</sup> This includes trams and funiculars

## 2.1 City transport in cities with a Metropolitan

		Passengers transported (thousands)	% variation	
			Annual	Year-to-date average
Barcelona	City bus	15,688	-3.4	-2.2
	Metropolitan	31,746	-0.1	-3.4
Bilbao	City bus	2,447	-2.3	-0.1
	Metropolitan	6,414	-1.6	-1.0
Madrid	City bus	30,117	2.9	-2.7
	Metropolitan	41,339	-8.1	-9.2
Palma	City bus	3,600	1.4	-2.5
	Metropolitan	41	-16.9	0.8
Sevilla	City bus	5,144	2.8	0
	Metropolitan	780	-3.2	-3.2
Valencia	City bus	(1)	(1)	(1)
	Metropolitan	4,601	-6.4	-8.5

(1) Publication thereof is not allowed

## 2.2 City bus transport

	Passengers transported (thousands)	% variation	
		Annual	Year-to-date average
NATIONAL	127,421	0.0	-1.9
Andalucía	15,940	-4.3	-2.0
Aragón	8,984	4.9	2.1
Asturias, Principado de	2,797	0.1	-0.3
Canarias	3,977	-5.5	-0.4
Castilla y León	5,042	-3.3	-6.5
Castilla - La Mancha	1,358	-15.0	-14.4
Cataluña	22,059	-0.5	-1.1
Comunitat Valenciana	9,775	-0.2	-2.7
Extremadura	799	2.6	-5.0
Galicia	4,829	1.1	-1.7
Madrid, Comunidad de	34,034	2.8	-1.9
Murcia, Región de	1,075	-10.8	-14.3
País Vasco	6,299	2.1	0.5
Rest of AACC <sup>(1)</sup>	10,453	0.4	-1.7

<sup>(1)</sup> In order to protect statistical secrecy, the passengers of the Autonomous Communities of Illes Balears, Cantabria, Comunidad Foral de Navarra and La Rioja and of the Autonomous Cities of Ceuta and Melilla have been grouped

### 3. Inter-city transport

	Passengers transported (thousands)	% variation	
		Annual	Year-to-date average
INTER-CITY TRANSPORT	108,753	-2.1	-1.9
Road	59,112	-1.9	-1.5
Local	39,277	-1.2	-0.4
Regional	18,054	-2.8	-3.6
Long-distance	1,781	-7.9	-7.0
Rail <sup>(1)</sup>	45,554	-1.4	-1.7
Local rail	40,440	-1.8	-2.1
Regional rail	2,708	-7.1	-3.3
Long-distance rail	2,405	13.7	10.7
Air (domestic)	2,932	-16.5	-16.1
Sea (cabotage) <sup>(2)</sup>	1,155	9.5	5.9

<sup>(1)</sup> Local and regional rail include all rail operators and Long-distance rail only includes RENFE

<sup>(2)</sup> Estimated data

### 4. Special and unscheduled transport

	Passengers transported (thousands)	% variation	
		Annual	Year-to-date average
SPECIAL AND UNSCHEDULED TRANSPORT	23,750	-0.4	-1.2
Special	8,480	0.5	-0.1
School	798	-3.9	-1.9
Work	7,683	1.0	5.3
Unscheduled	15,269	-1.0	-3.7

For further information see INEbase - [www.ine.es/en/](http://www.ine.es/en/) All press releases at: [www.ine.es/prensa/prensa\\_en.htm](http://www.ine.es/prensa/prensa_en.htm)

**Press Office:** Telephone numbers: 91 583 93 63 / 94 08 – Fax: 91 583 90 87 - [gprensa@ine.es](mailto:gprensa@ine.es)

**Information Area:** Telephone number: 91 583 91 00 – Fax: 91 583 91 58 – [www.ine.es/infoine](http://www.ine.es/infoine)