

10 October 2007

Transport of passengers statistics

August 2007. *Provisional data*

In August, the number of passengers using city transport increased 1.4% in one year

The number of passengers using the inter-city transport increased 0.5%

More than 190.5 million passengers used **the city transport in August**, (a yearly increase of 1.4%). There was an increase of 11.7% in the metropolitan service and a decrease of 3.7% in the city bus service in August 2007.

On the other hand, **the inter-city transport** was used by more than 126 million passengers, (a yearly increase of 0.5%).

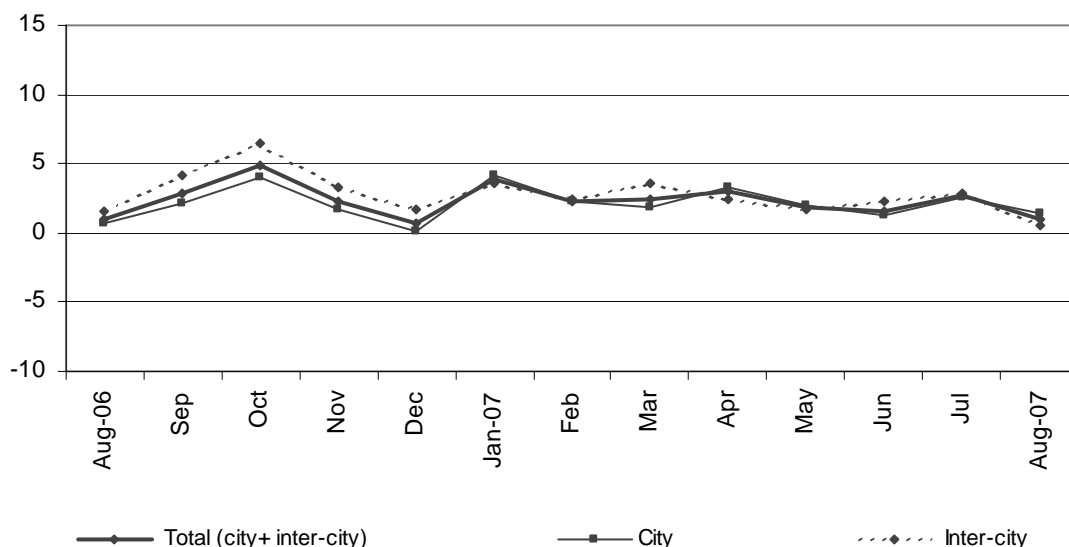
	No. of passengers (thousands)	% rate	
		Same month last year	In one year
City transport			
Total	190,505	1.43	2.35
Buses	120,647	-3.71	0.61
- Scheduled ¹	119,445	-3.77	0.59
- Non-scheduled	1,202	2.89	3.89
Metropolitan	69,858	11.74	5.31
Inter-city transport			
Total	126,022	0.48	2.45
Road transport	84,249	3.09	3.40
- Scheduled ¹	64,381	1.38	2.65
- Non-scheduled	19,868	9.06	6.89
Railway transport	35,856	-6.13	-0.16
Air transport (domestic)	4,422	10.01	9.63
Sea transport (cabotage) ^{2, 3}	1,495	0.97	7.34

(1) City and Inter-city transport by road includes: general scheduled and especial scheduled (scholars and workers).

(2) Disembarked passengers only.

(3) Estimated data.

VARIATION RATE IN ONE YEAR (%)



The general scheduled city bus service decreased 4%

In August, more than 116.3 million passengers used the general scheduled city bus service, which means a decrease of 4% in the inter-annual rate.

By Autonomous Communities, there were remarkable increases in Castilla – La Mancha (14.9%), Cataluña (4.8%) and Aragón (4.1%). In the Autonomous Community of Madrid there was a decrease of 18.6%.

General scheduled city bus service

	No. of passengers (thousands)	% rate	
		Same month last year	In one year
TOTAL	116,349	-4.01	0.45
Andalucía	16,998	1.29	0.21
Aragón	7,715	4.10	5.48
Asturias (Principado de)	3,120	1.40	1.58
Canarias	4,324	-8.40	0.56
Castilla y León	4,771	0.03	1.90
Castilla-La Mancha	1,111	14.92	12.15
Cataluña	20,574	4.75	4.57
Comunitat Valenciana	8,814	0.13	1.86
Extremadura	764	-1.50	-1.53
Galicia	4,647	-3.31	1.28
Madrid (Comunidad de)	28,127	-18.58	-5.67
Murcia (Región de)	1,176	-1.25	2.31
País Vasco	5,437	-1.64	2.94
Others ¹	8,771	7.11	6.95

¹ In order to protect the statistical secrecy, Autonomous Communities are grouped in those cases in which data at a company level could be identified.

The special scheduled city bus service increased 5.9%

In August, near 1 million scholars used a special and scheduled city bus line, 1.4% less than in the same month of 2006.

On the other hand, more than 2.1 million workers used a special and scheduled city bus line, 9.6% more than in August 2006.

Special scheduled city bus service

	No. of passengers (thousands)	% rate	
		Same month last year	In one year
TOTAL	3,096	5.90	3.37
Scholars	970	-1.44	2.51
Workers	2,126	9.63	5.29

The number of passengers using the metropolitan increased 11.7% in August with regard to the same month in 2006. The number of passengers increased in all the Spanish metropolitan services. There were remarkable increases in Madrid (15.2%) and Valencia (10.6%).

Metropolitan

	No. of passengers (thousands)	% rate	
		Same month last year	In one year
TOTAL	69,858	11.74	5.31
Barcelona	21,330	7.79	3.74
Bilbao	5,471	4.75	8.53
Madrid	39,510	15.20	5.69
Valencia	3,547	10.58	6.01

The inter-city transport increased 0.5% with regard to August 2006.

In August more than 126 million passengers used the inter-city transport. This means an increase of 0.5% in the inter-annual rate.

Regarding the transport by road, the number of passengers increased 3.1% with regard to August 2006. On the other hand, there were increases in the non-scheduled transport (9.1%), in the special scheduled transport (3.3%) and in the general scheduled transport (1.1%).

The air transport increased 10% with regard to August 2006, while the railway transport decreased 6.1%.

Inter-city Transport

	No. of passengers (thousands)	% rate	
		Same month last year	In one year
TOTAL	126,022	0.48	2.45
Road transport	84,249	3.09	3.40
General Scheduled	56,836	1.13	2.09
Special scheduled	7,545	3.26	3.83
- Scholars	63	6.08	4.19
- Workers	7,482	3.24	3.09
Non-scheduled	19,868	9.06	6.89
Railway transport	35,856	-6.13	-0.16
RENFE	30,179	-7.86	-0.65
- AVE - Long Distance ²	1,671	-1.36	1.69
- Regional ³	2,469	-1.00	1.32
- Local	26,039	-8.85	-0.87
Narrow gauge trains	5,677	4.31	2.84
Air (Domestic)	4,422	10.01	9.63
Sea transport (Cabotage) ¹	1,495	0.97	7.34

(1) Estimated data

(2) Long Distance includes long distance and long distance high speed.

(3) Regional includes regional and regional high speed.

More information in INEbase – www.ine.es All the press releases in: www.ine.es/prensa/prensa.htm

Press office: Telephone: 91 583 93 63 / 94 08 – Fax: 91 583 90 87 - gprensa@ine.es

Information area: Telephone: 91 583 91 00 – Fax: 91 583 91 58 – www.ine.es/infoine