

Passenger Transport Statistics (PT)

August 2013. *Provisional data*

The number of passengers using public transport decreases 3.4% in August, as compared with the same month of the previous year

The city transport decreases 4.7% in the annual rate and the inter-city transport 1.6%

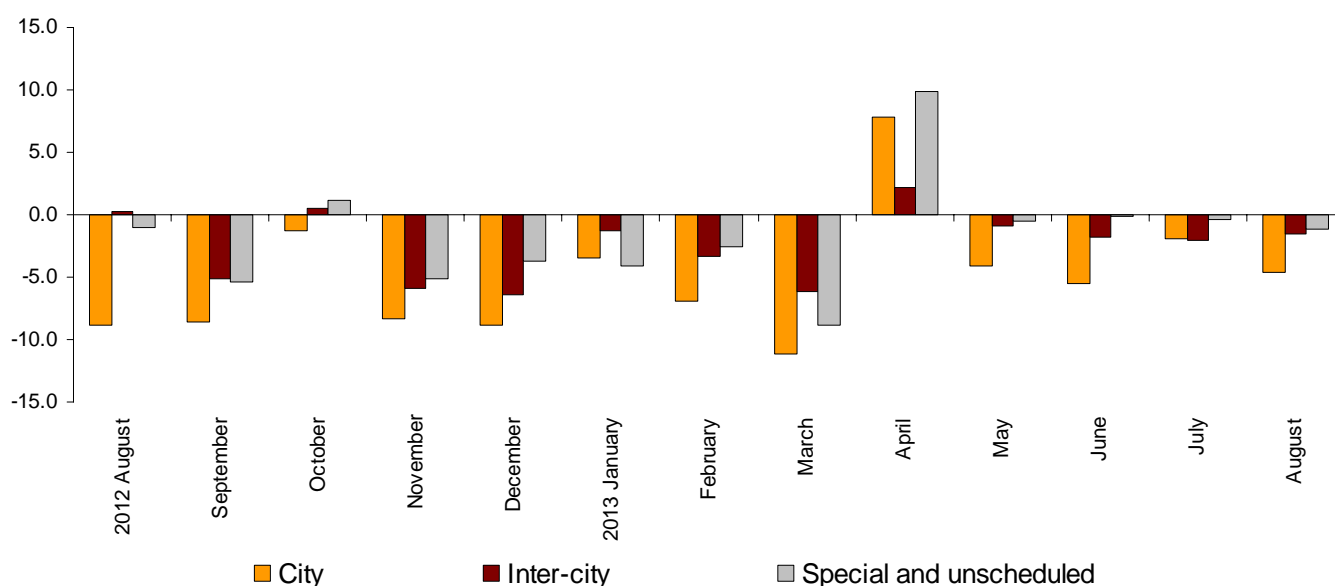
Passengers transport evolution

More than 266.4 million passengers used public transport in August, 3.4% less than the same month of the previous year.

The city transport decreased 4.7% in the annual rate and the inter-city transport 1.6%. Within this, the most significant drop was that of the air transport, with a rate of -16.0%.

Passenger transport annual performance

Type of transport



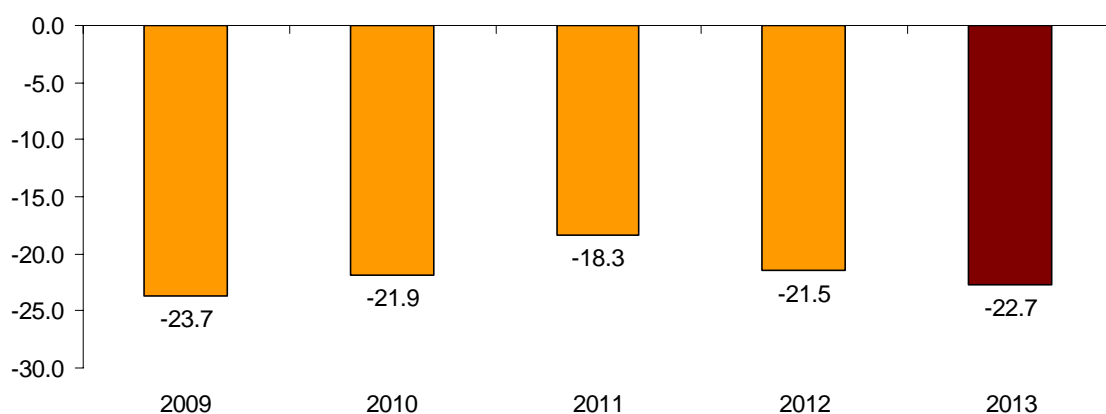
Passengers transport annual evolution, by type of transport

	City	Inter-city	Special and unscheduled
2012 August	-8.9	0.2	-1.0
September	-8.7	-5.2	-5.4
October	-1.2	0.5	1.2
November	-8.4	-5.8	-5.2
December	-8.8	-6.4	-3.7
2013 January	-3.5	-1.3	-4.1
February	-6.9	-3.3	-2.5
March	-11.1	-6.2	-8.8
April	7.8	2.1	9.9
May	-4.1	-0.9	-0.5
June	-5.5	-1.8	-0.1
July	-1.9	-2.1	-0.4
August	-4.7	-1.6	-1.1

Monthly rate evolution¹

The variation rate for the number of passengers on public transport in August, as compared with July was -22.7%.

**Monthly rate evolution
(month-on-month variation for August as compared with July)**



¹ In order to contribute to the analysis and interpretation of the data, this section has been added including the performance of the monthly rate for the number of users of public transport in recent years. The month-on-month rates of this type of series may have a seasonal behaviour; therefore it is recommended to evaluate them in relation to the item of data for the same month in previous years.

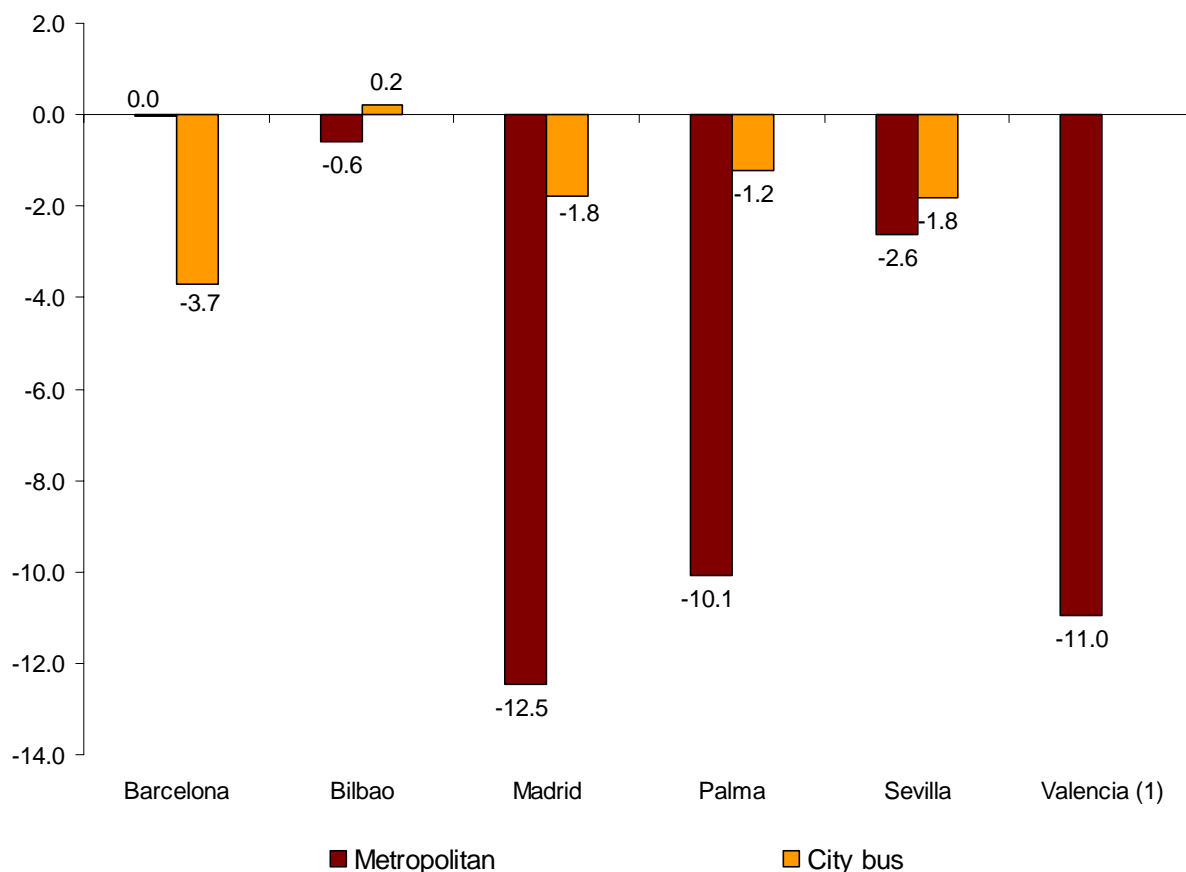
City transport

City transport was used by nearly 156.8 million passengers in August, 4.7% less than the same month of the previous year.

Metropolitan transport registered a 6.8% decrease, whereas bus transport decreased 3.2%.

According to the data of the cities providing metropolitan transport, all the cities registered a decrease except Barcelona, where it stood the same. Bus transport also registered a decrease in these cities, except in Bilbao, where it increased 0.2%.

Interannual rate of city transport passengers in cities with a Metropolitan

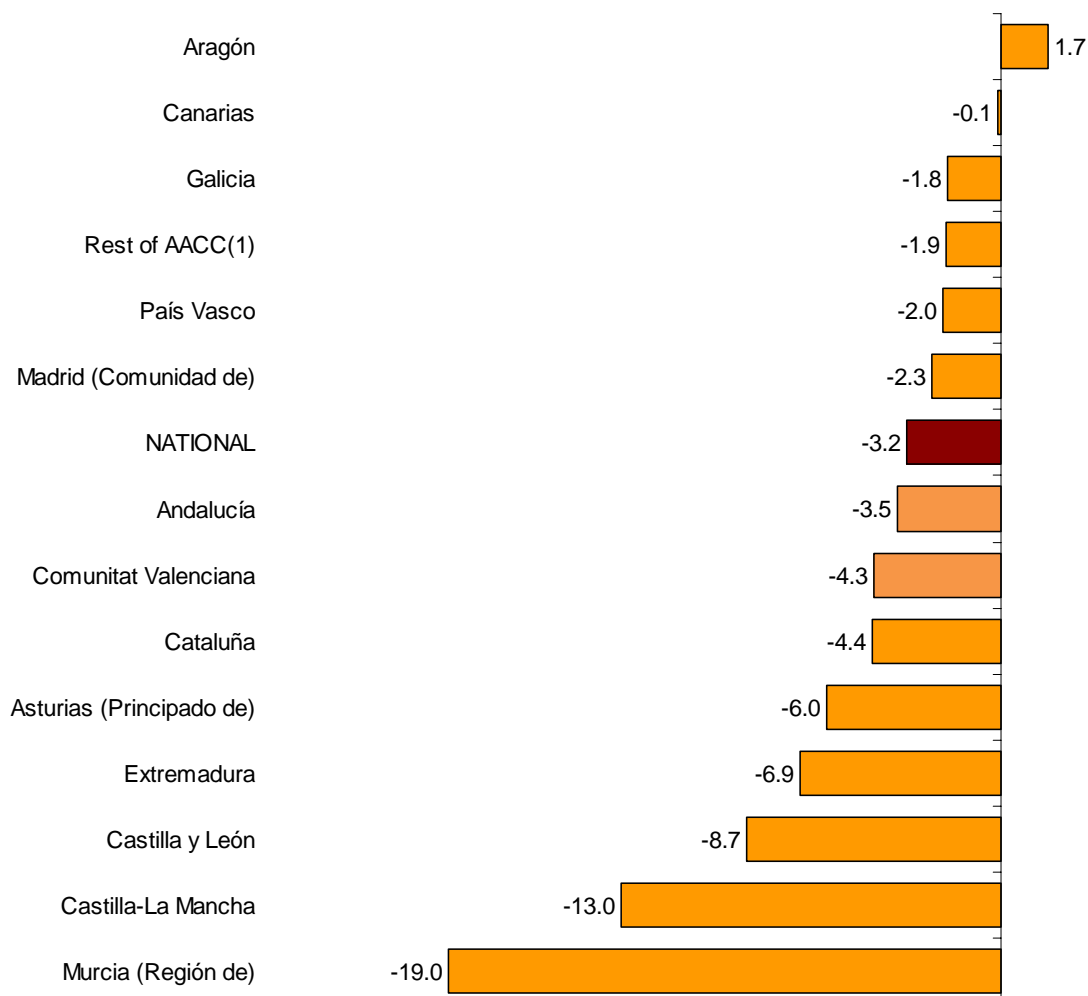


⁽¹⁾The publication of the city transport by bus in Valencia is not allowed.

Aragón was the only Autonomous Community that registered an annual increase in the number of passengers in the transport by bus (1.7%)

In turn, the Autonomous Communities that registered the greatest decreases are Región de Murcia (-19.0%) and Castilla-La Mancha (-13.0%).

**Annual rate of the number of passengers
City transport by bus**



(1) In order to protect statistical secrecy, the passengers of the Autonomous Communities of Illes Balears, Cantabria, Comunidad Foral de Navarra and La Rioja and of the Autonomous Cities of Ceuta and Melilla have been grouped.

Inter-city transport

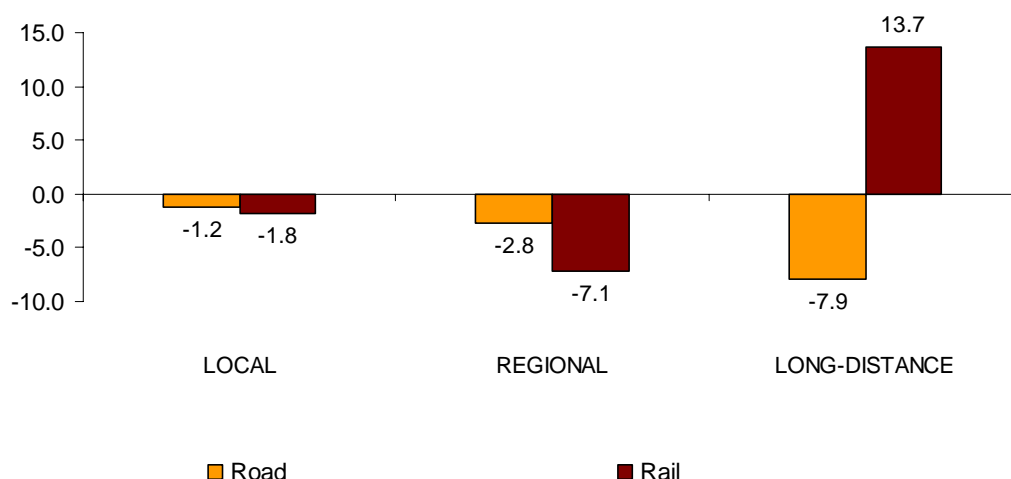
More than 90.3 million passengers used inter-city transport in August, indicating a 1.6% decrease, as compared with the same month of 2012.

Air transport registered the greatest decrease (–16.0%). Bus transport decreased 3.3% and rail transport increased 2.2%.

Local distance passengers decreased 2.5% for bus transport and increased 0.7% for rail transport. Regional passengers distance decreased 4.4% for bus transport and increased 9.2% for rail transport.

Finally, long-distance passengers decreased 7.3% in bus transport while rail transport increased 18.0%.

**Annual rate of the number of passengers
Inter-city transport by type of transport and distance**



Special and unscheduled transport

Over 19.3 million passengers used special and unscheduled transport in August, indicating a 1.1% decrease in the annual rate.

The number of special transport passengers increased 0.9%, reaching over 5.9 million users. Within this, school transport decreased 1.8%, while work transport increased 0.9%.

In turn, unscheduled transport decreased 2.0%, as compared with the same month of the previous year, reaching more than 13.4 million passengers.

Passenger Transport Statistics

August 2013

Provisional data

1. Passenger transport

	Passengers transported (thousands)	% variation	
		Annual	Year-to-date average
BY TYPE OF TRANSPORT	266,487	-3.4	-3.0
City transport	156,838	-4.7	-3.9
Inter-city transport	90,301	-1.6	-1.9
Special and unscheduled transport	19,348	-1.1	-1.2

2. City transport

	Passengers transported (thousands)	% variation	
		Annual	Year-to-date average
CITY TRANSPORT	156,838	-4.7	-3.9
Metropolitan	60,944	-6.8	-6.6
Bus ⁽¹⁾	95,894	-3.2	-2.0

⁽¹⁾ This includes trams and funiculars

2.1 City transport in cities with a Metropolitan

		Passengers transported (thousands)	% variation	
			Annual	Year-to-date average
Barcelona	City bus	10,942	-3.7	-2.4
	Metropolitan	23,610	0.0	-3.1
Bilbao	City bus	2,081	0.2	-0.1
	Metropolitan	5,552	-0.6	-1.0
Madrid	City bus	19,959	-1.8	-2.7
	Metropolitan	28,261	-12.5	-9.5
Palma	City bus	3,272	-1.2	-2.3
	Metropolitan	34	-10.1	0.2
Sevilla	City bus	3,557	-1.8	0
	Metropolitan	509	-2.6	-3.2
Valencia	City bus	(1)	(1)	(1)
	Metropolitan	2,978	-11.0	-8.7

(1) Publication thereof is not allowed

2.2 City bus transport

	Passengers transported (thousands)	% variation	
		Annual	Year-to-date average
NATIONAL	95,894	-3.2	-2.0
Andalucía	13,609	-3.5	-2.2
Aragón	6,700	1.7	2.0
Asturias, Principado de	2,588	-6.0	-1.0
Canarias	3,759	-0.1	-0.4
Castilla y León	4,003	-8.7	-6.7
Castilla - La Mancha	1,108	-13.0	-14.3
Cataluña	14,938	-4.4	-1.4
Comunitat Valenciana	6,866	-4.3	-2.9
Extremadura	613	-6.9	-5.2
Galicia	4,260	-1.8	-1.7
Madrid, Comunidad de	22,800	-2.3	-1.9
Murcia, Región de	678	-19.0	-14.6
País Vasco	5,401	-2.0	0.2
Rest of AACC ⁽¹⁾	8,571	-1.9	-1.7

⁽¹⁾ In order to protect statistical secrecy, the passengers of the Autonomous Communities of Illes Balears, Cantabria, Comunidad Foral de Navarra and La Rioja and of the Autonomous Cities of Ceuta and Melilla have been grouped

3. Inter-city transport

	Passengers transported (thousands)	% variation	
		Annual	Year-to-date average
INTER-CITY TRANSPORT	90,301	-1.6	-1.9
Road	50,642	-3.3	-1.7
Local	32,411	-2.5	-0.6
Regional	16,496	-4.4	-3.7
Long-distance	1,734	-7.3	-7.1
Rail ⁽¹⁾	35,503	2.2	-1.3
Local rail	30,764	0.7	-1.9
Regional rail	2,531	9.2	-1.9
Long-distance rail	2,208	18.0	11.6
Air (domestic)	2,919	-16.0	-16.1
Sea (cabotage) ⁽²⁾	1,237	4.4	5.6

⁽¹⁾ Local and regional rail include all rail operators and Long-distance rail only includes RENFE

⁽²⁾ Estimated data

4. Special and unscheduled transport

	Passengers transported (thousands)	% variation	
		Annual	Year-to-date average
SPECIAL AND UNSCHEDULED TRANSPORT	19,348	-1.1	-1.2
Special	5,901	0.9	-0.1
School	116	-1.8	-1.9
Work	5,784	0.9	4.8
Unscheduled	13,448	-2.0	-3.5

For further information see INEbase - www.ine.es/en/ All press releases at: www.ine.es/prensa/prensa_en.htm

Press Office: Telephone numbers: 91 583 93 63 / 94 08 – Fax: 91 583 90 87 - gprensa@ine.es

Information Area: Telephone number: 91 583 91 00 – Fax: 91 583 91 58 – www.ine.es/infoine