

11 November 2008

**Passenger Transport Statistics  
September 2008. Provisional data**

**The number of passengers using city transport increases 2.1% in September as compared with the same month of the previous year**

**The number of passengers using inter-city transport increases 0.6% in the interannual rate**

253 million passengers approximately, used **city transport in September**, representing a 2.1% increase with regard to the same month of 2007. Increases of 2.2% in the bus service and 1.8% in the metropolitan service were recorded in September.

On the other hand, **inter-city transport** was used by more than 149.7 million passengers, that is, 0.6% more than during the same month of the previous year.

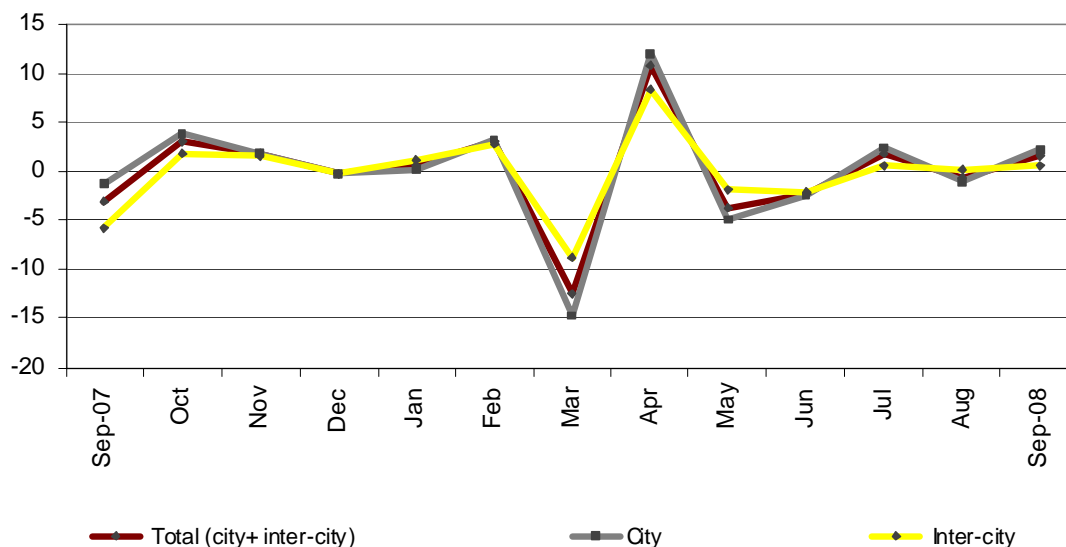
	No. of passenger (thousands)	% rate	
		Inter-annual	Accumulated inter-annual
<b>City transport</b>			
<b>TOTAL</b>	<b>253,098</b>	<b>2.08</b>	<b>-0.69</b>
Buses	157,286	2.23	-1.65
- Scheduled <sup>1</sup>	156,147	2.19	-1.67
General scheduled	148,920	2.35	-1.59
Special scheduled	7,227	-1.14	-3.38
- Non-scheduled	1,139	7.91	1.42
Metropolitan	95,812	1.84	0.88
<b>Inter-city transport</b>			
<b>TOTAL</b>	<b>149,741</b>	<b>0.58</b>	<b>-0.09</b>
Road transport	99,577	2.56	0.45
- Scheduled <sup>1</sup>	84,737	3.28	0.63
- Non-scheduled	14,840	-1.35	-0.47
Railway transport	45,866	-2.06	-0.90
Air transport (domestic)	3,390	-15.91	-4.17
Sea transport (cabotage) <sup>2, 3</sup>	908	-2.23	0.10

(1) Inter-city transport by road includes: general scheduled and special scheduled (students and workers).

(2) Disembarked passengers only.

(3) Estimated data.

Variation rate in one year (%)



### General scheduled city transport by bus increases 2.4%

More than 148.9 million passengers used the general scheduled city bus in September, representing an increase of 2.4% as compared with the same month of 2007.

It is worth noting the interannual increases registered in the Autonomous Community of Aragón (17.9%).

### General scheduled city bus service

	No. of passengers (thousands)	% rate inter-annual	Accumulated inter-annual
<b>TOTAL</b>	<b>148,920</b>	<b>2.35</b>	<b>-1.59</b>
Andalucía	19,938	2.83	1.85
Aragón	12,277	17.87	7.93
Asturias (Principado de)	3,496	4.60	3.38
Canarias	3,711	4.21	-0.19
Castilla y León	6,390	3.23	0.89
Castilla-La Mancha	1,864	6.33	5.33
Cataluña	27,344	1.59	-3.64
Comunitat Valenciana	12,084	2.69	-2.30
Extremadura	993	-1.61	-0.88
Galicia	5,073	5.62	1.47
Madrid (Comunidad de)	37,906	-2.86	-7.30
Murcia (Región de)	1,517	-5.38	1.87
País Vasco	7,000	2.78	1.29
Others <sup>1</sup>	9,327	4.66	3.29

<sup>1</sup> In order to protect the statistical secrecy, Autonomous Communities are grouped in those cases in which data at a company level could be identified.

### Transport by special scheduled city bus decreases 1.1%

During the month of September, the special scheduled city bus service experienced a decrease of 1.1% in the interannual rate.

An increase of 0.4% was registered in the number of passengers on the special scheduled school bus service and a decrease of 4.3% among users of the special scheduled work bus service.

#### Special scheduled city bus

	No. of passenger (thousands)	% rate	
		inter-annual	Accumulated inter-annual
<b>TOTAL</b>	<b>7,227</b>	<b>-1.14</b>	<b>-3.38</b>
Students	4,924	0.41	-4.09
Workers	2,303	-4.32	-1.60

### Transport by metropolitan increases 1.8% in the interannual rate

The number of passengers using the metropolitan increased 1.8% in September as compared with the same month in 2007. Increases were recorded in Valencia (8.6%), Barcelona (4.5%) and Bilbao (4%). The Madrid metropolitan is the only metropolitan transport which decreased (-0.5%).

#### Metropolitan

	No. of passengers (thousands)	% rate	
		inter-annual	Accumulated inter-annual
<b>TOTAL</b>	<b>95,812</b>	<b>1.84</b>	<b>0.88</b>
Barcelona	29,808	4.53	3.34
Bilbao	6,922	3.98	0.67
Madrid	53,288	-0.53	-0.28
Valencia	5,794	8.58	-0.37

## Inter-city transport increases 0.6% as compared with September 2007

The number of passengers on inter-city transport exceeded 149.7 million during the month of September, representing an interannual increase of 0.6%.

In road transport, the number of passengers using the bus to commute increased 2.6% in the interannual rate. Increases were registered in both scheduled transport modalities, 4.8% among users of special scheduled transport and 2.7% among users of general scheduled transport. In contrast, non-scheduled transport decreased 1.4% as compared with the same month the previous year.

Railway transport decreased 2.1% in the interannual rate. This decrease was due to the decrease of passengers using RENFE (-4,6%).

Air transport experienced a decrease of 15.9% as compared with the month of September the previous year.

### Inter-city Transport

	No. of passenger (thousands)	% rate	
		Interannual	Accumulated interannual
<b>TOTAL</b>	<b>149,741</b>	<b>0.58</b>	<b>-0.09</b>
<b>Road transport</b>	<b>99,577</b>	<b>2.56</b>	<b>0.45</b>
General Scheduled	59,862	2.67	0.55
Special scheduled	24,875	4.78	0.80
- Students	15,745	5.66	-0.08
- Workers	9,130	3.29	2.65
Non-scheduled	14,840	-1.35	-0.47
	<b>45,866</b>	<b>-2.06</b>	<b>-0.90</b>
RENFE	38,784	-2.61	-0.77
- AVE - Long distance <sup>2</sup>	2,133	28.25	23.54
- Regional <sup>3</sup>	2,779	4.55	1.63
- Local	33,872	-4.59	-1.95
Narrow gauge trains	7,082	1.06	-1.67
<b>Air (domestic)</b>	<b>3,390</b>	<b>-15.91</b>	<b>-4.17</b>
<b>Sea transport (cabotage) <sup>1</sup></b>	<b>908</b>	<b>-2.23</b>	<b>0.10</b>

(1) Estimated data.

(2) Long Distance includes long distance and long distance high speed.

(3) Regional includes regional and regional high speed.

For further information see [INEbase-www.ine.es/en/welcome\\_en.htm](http://INEbase-www.ine.es/en/welcome_en.htm) All press releases at: [www.ine.es/en/prensa/prensa\\_en.htm](http://www.ine.es/en/prensa/prensa_en.htm)

Press office: Telephone: 91 583 93 63 / 94 08 – Fax: 91 583 90 87 - [gprensa@ine.es](mailto:gprensa@ine.es)

Information area: Telephone: 91 583 91 00 – Fax: 91 583 91 58 – [www.ine.es/infoine](http://www.ine.es/infoine)