

9 January 2008

Transport of passengers statistics

November 2007. *Provisional data*

In November, the number of passengers using city transport increased 1.9% in one year

The number of passengers using the inter-city transport increased 1.5%

More than 285 million passengers used **the city transport in November**, (a yearly increase of 1.9%). There were increases of 1.6% in the metropolitan service and of 2% in the city bus service in November 2007.

On the other hand, **the inter-city transport** was used by more than 173.9 million passengers, (a yearly increase of 1.5%).

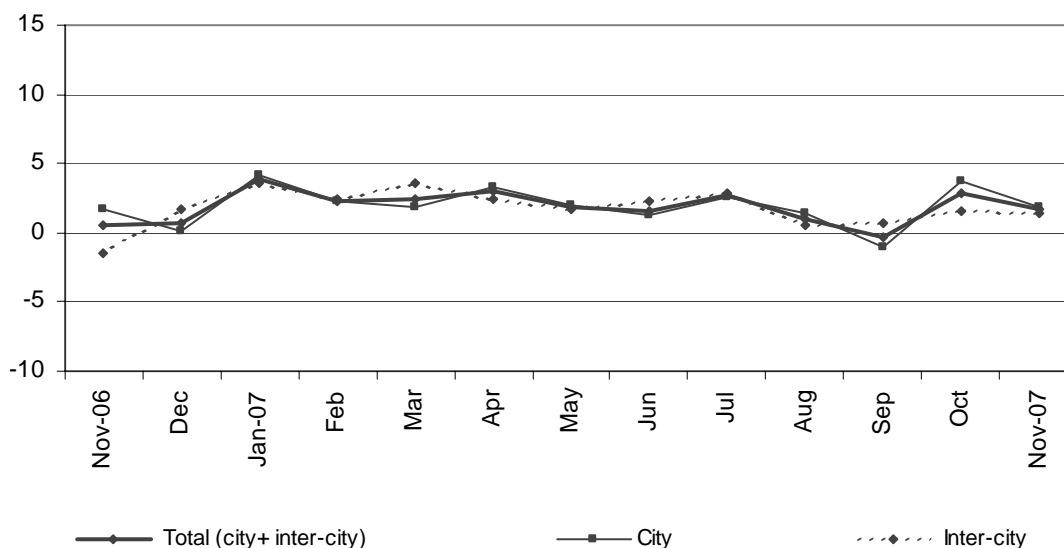
	No. of passengers (thousands)	% rate	
		Same month last year	In one year
City transport			
Total	285,098	1.86	2.14
Buses	178,567	2.03	0.57
- Scheduled ¹	177,392	2.01	0.55
- Non-scheduled	1,175	4.35	3.45
Metropolitan	106,531	1.59	4.83
Inter-city transport			
Total	173,924	1.48	2.12
Road transport	118,782	3.54	3.32
- Scheduled ¹	101,522	3.00	2.67
- Non-scheduled	17,260	6.82	6.46
Railway transport ³	51,133	-3.45	-1.06
Air transport (domestic) ³	3,514	8.36	9.34
Sea transport (cabotage) ^{2, 3}	495	7.38	6.80

(1) City and Inter-city transport by road includes: general scheduled and especial scheduled (scholars and workers).

(2) Disembarked passengers only.

(3) Estimated data.

Variation rate in one year (%)



The general scheduled city bus service increased 1.8%

In November, near 167 million passengers used the general scheduled city bus service, which means an increase of 1.8% in the inter-annual rate.

By Autonomous Communities, there were remarkable increases in Castilla – La Mancha (15.9%), Murcia (9.5%), Cataluña (4%) and País Vasco (3.4%), and a decrease in Extremadura (4.4%).

General scheduled city bus

	No. of passengers (thousands)	% rate	
		Same month last year	In one year
TOTAL	166,978	1.80	0.38
Andalucía	22,660	2.15	0.14
Aragón	11,418	0.39	4.32
Asturias (Principado de)	3,446	-0.43	1.46
Canarias	5,127	2.12	0.19
Castilla y León	6,644	-0.73	1.69
Castilla-La Mancha	1,580	15.86	13.69
Cataluña	30,173	3.97	4.31
Comunitat Valenciana	13,430	0.92	1.11
Extremadura	1,262	-4.41	-0.90
Galicia	5,865	-2.14	1.11
Madrid (Comunidad de)	47,324	0.30	-5.34
Murcia (Región de)	2,013	9.48	3.62
País Vasco	6,699	3.43	3.02
Others ¹	9,337	6.24	6.91

¹ In order to protect the statistical secrecy, Autonomous Communities are grouped in those cases in which data at a company level could be identified.

The special scheduled city bus service increased 5.5%

In November, more than 8 million scholars used a special and scheduled city bus line, 6% more than in the same month of 2006.

On the other hand, more than 2.4 million workers used a special and scheduled city bus line, 3.7% more than in November 2006.

Special scheduled city bus service

	No. of passengers (thousands)	% rate	
		Same month	In one
		last year	year
TOTAL	10,414	5.46	3.91
Scholars	8,010	5.99	3.36
Workers	2,404	3.73	5.32

The number of passengers using the metropolitan increased 1.6% in November with regard to the same month in 2006. The number of passengers increased in all the Spanish metropolitan services, especially in Bilbao (4%), Barcelona (3.3%) and Valencia (1.5%).

Metropolitan

	No. of passengers (thousands)	% rate	
		Same month	In one
		last year	year
TOTAL	106,531	1.59	4.83
Barcelona	32,821	3.33	3.65
Bilbao	7,545	3.96	7.75
Madrid	60,108	0.39	5.08
Valencia	6,057	1.54	5.29

The inter-city transport increased 1.5% with regard to November 2006.

In November near 174 million passengers used the inter-city transport. This means an increase of 1.5% in the inter-annual rate.

Regarding the transport by road, the number of passengers increased 3.5% with regard to November 2006. There were increases in the non-scheduled transport (6.8%), in the general scheduled transport (3.2%) and in the special scheduled transport (2.8%).

Inter-city Transport

	No. of passengers (thousands)	% rate	
		Same month last year	In one year
TOTAL	173,924	1.48	2.12
Road transport	118,782	3.54	3.32
General Scheduled	63,280	3.15	2.11
Special scheduled	38,242	2.76	3.78
- Scholars	27,814	2.07	4.08
- Workers	10,428	4.65	3.15
Non-scheduled	17,260	6.82	6.46
Railway transport	51,133	-3.45	-1.06
RENFE ¹	43,942	-3.29	-1.52
- AVE - Long Distance ²	1,367	0.89	1.62
- Regional ³	2,549	-3.01	0.37
- Local	40,026	-3.44	-1.77
Narrow gauge trains	7,191	-4.44	1.83
Air (Domestic) ¹	3,514	8.36	9.34
Sea transport (Cabotage) ¹	495	7.38	6.80

(1) Estimated data

(2) Long Distance includes long distance and long distance high speed.

(3) Regional includes regional and regional high speed.

For further information see INEbase-www.ine.es/en/welcome_en.htm All press releases at: www.ine.es/en/prensa/prensa_en.htm

Press office: Telephone: 91 583 93 63 / 94 08 – Fax: 91 583 90 87 - gprensa@ine.es

Information area: Telephone: 91 583 91 00 – Fax: 91 583 91 58 – www.ine.es/infoine