

**Passenger Transport Statistics
November 2009. Provisional data**

The number of passengers using city transport decreases 2.3% in November, as compared with the same month the previous year

The number of passengers using inter-city transport decreases 0.5% in the interannual rate

More than 263 million passengers used the **city transport** service in November, representing a 2.3% decrease with regard to the same month of 2008. Decreases of 2.1% were registered in the bus service, and of 2.6% in the metropolitan service.

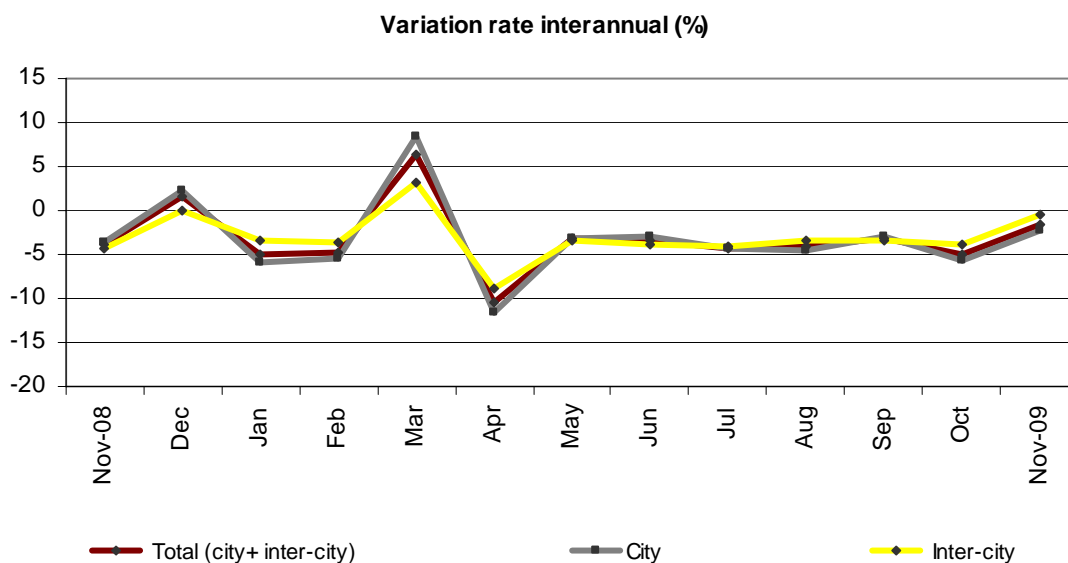
On the other hand, **inter-city transport** was used by 156 million passengers, 0.5% less than in the same month the previous year.

	No. of passengers (thousands)	Variation rate %	
		Interannual	Accumulated interannual
City transport			
TOTAL	263,343	-2.3	-3.8
Buses	161,069	-2.1	-2.8
- Scheduled	159,256	-2.1	-2.8
General scheduled	150,220	-2.3	-2.9
Special scheduled	9,036	1.0	-1.5
- Unscheduled	1,813	-0.5	-2.4
Metropolitan	102,274	-2.6	-5.3
Inter-city transport			
TOTAL	156,007	-0.5	-3.3
Road transport	103,524	-0.3	-2.1
- Scheduled ¹	90,678	0.1	-1.5
- Unscheduled	12,846	-2.9	-5.4
Rail transport	49,127	-1.0	-5.4
Air transport (domestic)	2,853	1.2	-7.5
Sea transport (cabotage) ^{2, 3}	503	2.1	-2.4

¹ Inter-city transport by road includes: general scheduled and special scheduled (students and workers)

² Disembarked passengers only

³ Estimated data



General scheduled city transport by bus decreases 2.3%

More than 150 million passengers used the general scheduled city bus this past month of November, 2.3% less than in the same month of 2008.

General scheduled city bus service

	No. of passengers (thousands)	Variation rate %	
		interannual	Accumulated interannual
TOTAL	150,220	-2.3	-2.9
Andalucía	21,638	0.5	-2.3
Aragón	10,873	-3.3	-7.7
Asturias (Principado de)	3,540	-2.0	-3.1
Canarias	3,474	-4.2	-6.5
Castilla y León	6,485	-0.9	-1.9
Castilla-La Mancha	2,067	-1.7	-1.8
Cataluña	26,480	-3.4	-3.0
Comunitat Valenciana	11,746	-5.8	-6.6
Extremadura	1,218	0.8	-5.5
Galicia	5,374	2.7	-1.3
Madrid (Comunidad de)	40,754	-3.5	-0.8
Murcia (Región de)	1,604	2.8	-5.7
País Vasco	6,000	-1.3	-2.9
Others ¹	8,967	1.5	-1.7

¹ In order to protect statistical secrecy, Autonomous Communities are grouped in those cases in which data at a company level could be identified.

Transport by special scheduled city bus service increases 1%

In the month of November, the special scheduled city bus service increased 1.0% in the interannual rate. The number of passengers transported increased 2.3% in the special scheduled school bus service and decreased 3.3% in the special scheduled work bus service.

Special scheduled city bus

	No. of passengers (thousands)	Variation rate %	
		interannual	Accumulated interannual
TOTAL	9,036	1.0	-1.5
Students	7,029	2.3	0.4
Workers	2,007	-3.3	-6.3

Transport by metropolitan decreases 2.6% in the interannual rate

The number of passengers using the Spanish metropolitan networks decreased 2.6%. It is worth noting that while Bilbao registered an increase of 5.8%, the number of passengers transported by metropolitan decreased in Madrid (-3.9%) and Barcelona (-3.2%).

Metropolitan

	No. of passengers (thousands)	Variation rate %	
		interannual	Accumulated interannual
TOTAL	102,274	-2.6	-5.3
Barcelona	30,907	-3.2	-4.1
Bilbao	7,920	5.8	0.2
Madrid	57,028	-3.9	-6.7
Valencia ¹	6,419	2.5	-4.1

¹ Estimated data by FF.CC. Generalitat Valenciana

Inter-city transport decreases 0.5% as compared with November 2008

The number of passengers using inter-city transport reached 156 million during the month of November, representing an interannual decrease of 0.5%.

In transport by road, the number of passengers using the bus for inter-city commutes decreased 0.3% as compared with the same month the previous year. Among users of scheduled transport, a 0.6% increase was registered in the general scheduled modality, and a 0.9% decrease in the special scheduled modality. Within the latter, work transport decreased 8.3%, whereas school transport increased 1.7% in the interannual rate. On the other hand, discretionary transport decreased 2.9%.

The number of air transport passengers increased 1.2% in November as compared with the same month of 2008.

Conversely, rail transport decreased 1.0%, although worth noting was the 1.5% increase registered by the number of passengers using long-distance AVE trains.

Inter-city transport

	No. of passengers (thousands)	Variation rate %	
		Interannual	Accumulated interannual
TOTAL	156,007	-0.5	-3.3
Road transport	103,524	-0.3	-2.1
General scheduled	60,032	0.6	-1.2
Special scheduled	30,646	-0.9	-2.1
- Students	23,387	1.7	-0.1
- Workers	7,258	-8.3	-7.0
- Unscheduled	12,846	-2.9	-5.4
Rail transport	49,127	-1.0	-5.4
RENFE	40,985	-2.7	-6.8
- AVE - Long distance ¹	1,857	1.5	-0.9
- Regional ²	2,807	-2.0	-0.2
- Local	36,321	-3.0	-7.6
Narrow gauge trains	8,142	9.1	2.4
Air transport (domestic)	2,853	1.2	-7.5
Sea transport (cabotage) ³	503	2.1	-2.4

¹ Long distance includes long distance and long distance high speed

² Regional includes regional and regional high speed

³ Estimated data

For further information see **INEbase-www.ine.es** All press releases at: **www.ine.es/prensa/prensa_en.htm**

Press Office: Telephone numbers: 91 583 93 63 / 94 08 – Fax: 91 583 90 87 - gprensa@ine.es

Information Area: Telephone: 91 583 91 00 – Fax: 91 583 91 58 – www.ine.es/infoine