

11 January 2013

**Passenger Transport Statistics (PT)**  
November 2012. *Provisional data*

**The number of passengers using city transport decreases 7.3% in November, as compared with the same month the previous year**

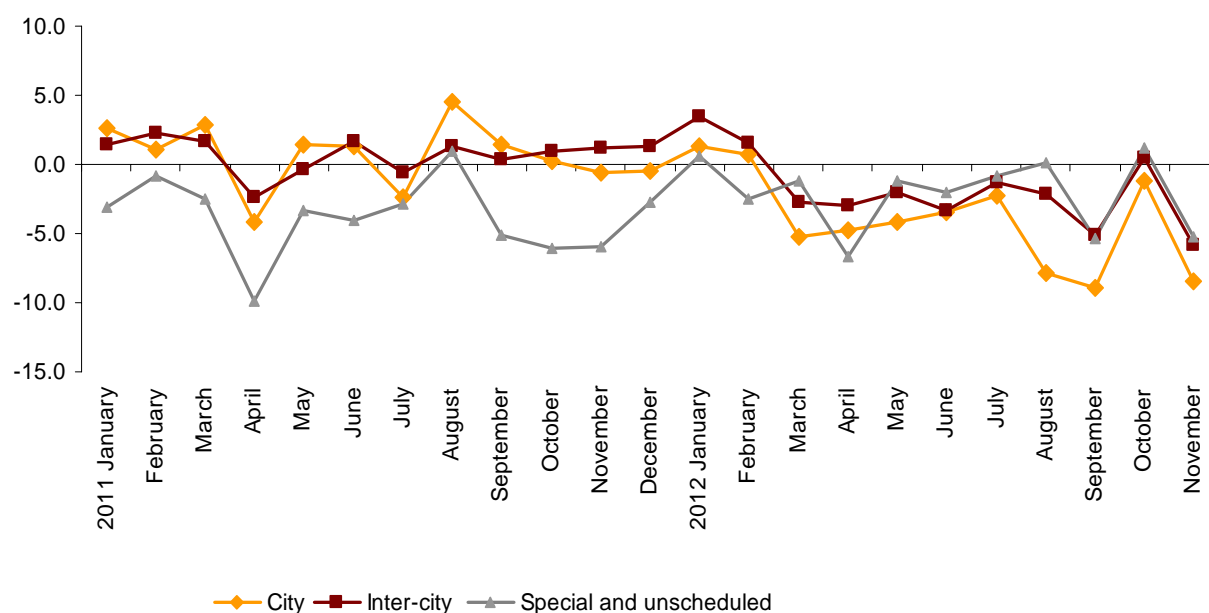
**The city transport decreases 8.4% in the annual rate and the inter-city transport decreases 5.8%**

**Passengers transport evolution**

Nearly 387.8 million passengers used public transport in November, 7.3% less than the same month the previous year.

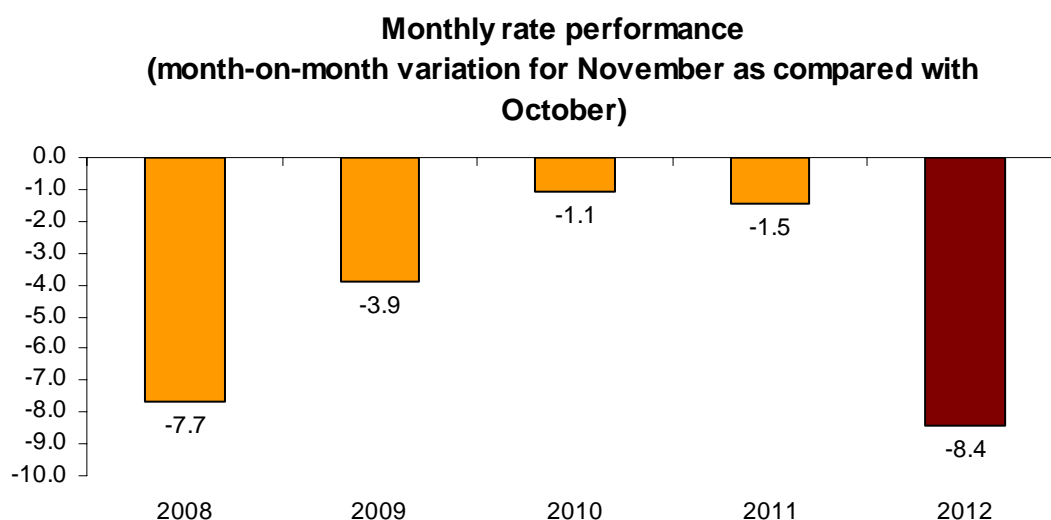
The average number of the total passengers decreased 3.1% for the first eleven months of 2012, as compared with the same period of the previous year. All types presented negative average rates during this period.

**Annual evolution of passenger transport**  
**Type of transport**



## Monthly rate performance<sup>1</sup>

The variation rate for the number of passengers on public transport in November as compared with October 2012 was  $-8.4\%$ . This monthly rate was the lowest in the last five year.



## City transport. National results and by Autonomous Community

City transport was used by more than 235.3 million passengers in November, 8.4% less than the same month the previous year.

Metropolitan transport registered a 8.1% decrease in its annual rate. All metropolitans registered negative rates. The metropolitan of Valencia was the highest decrease ( $-10.3\%$ ).

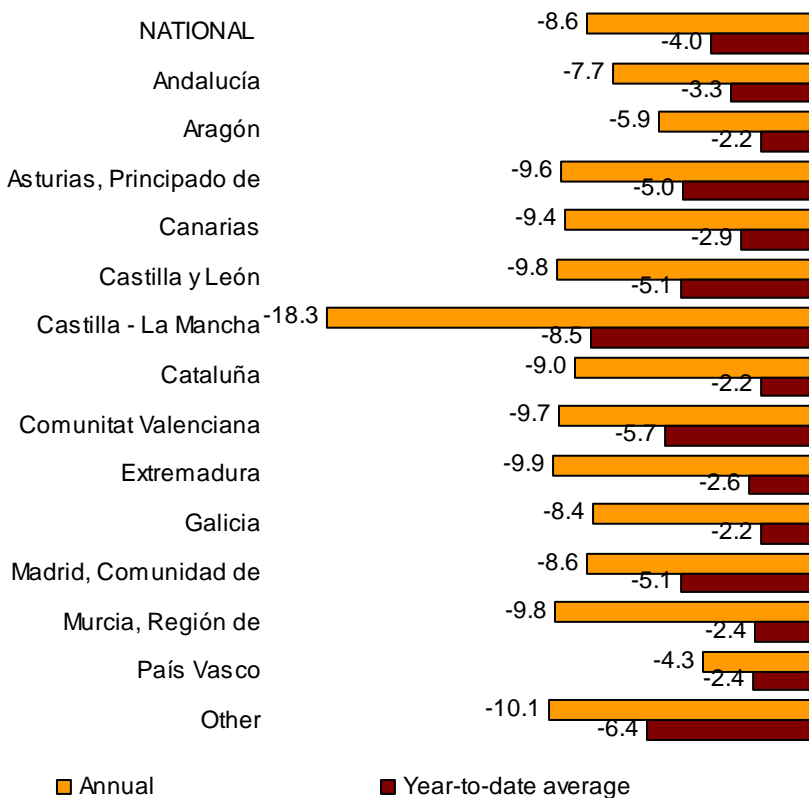
City transport by bus decreased 8.6% in the annual rate, with more than 139.8 million passengers in November.

By Autonomous Community, the greatest decreases were registered in Castilla-La Mancha ( $-18.3\%$ ) and Extremadura ( $-9.9\%$ ).

<sup>1</sup> In order to contribute to the analysis and interpretation of data, this section has been added with performance of the monthly rate for the number of users of public transport in October for recent years. The month-on-month rates of this type of series may have some degree of seasonal behaviour, therefore it is recommended that it be evaluated in relation to the item of data for the same month in previous years.

### Annual rates and number of passengers average

#### Urban transport by road



#### Inter-city transport

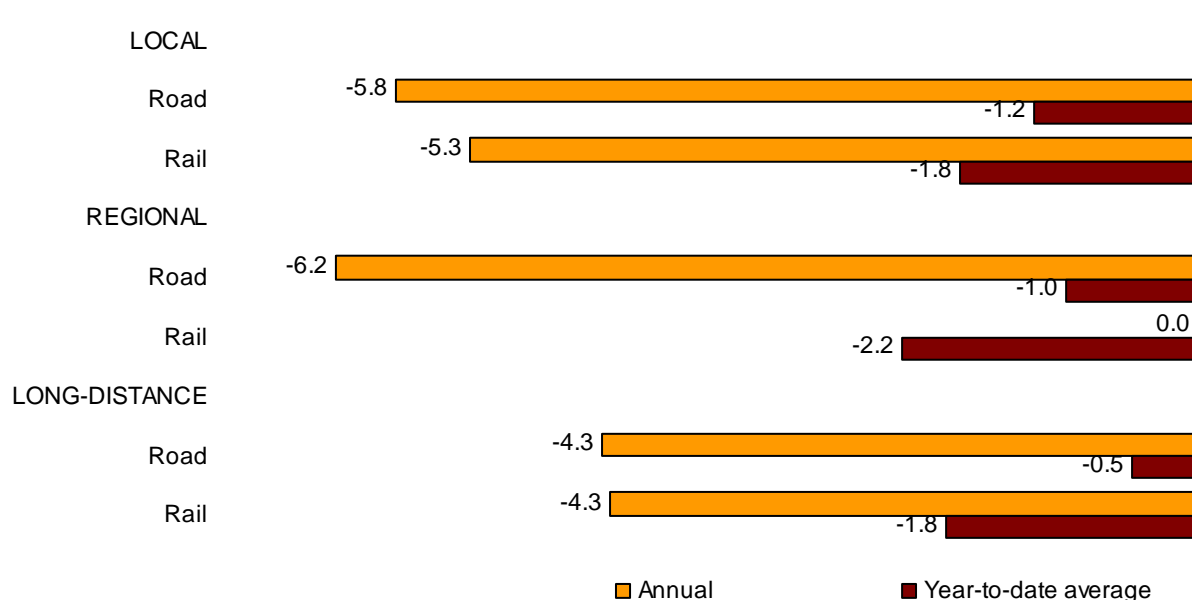
More than 105.7 million passengers used inter-city transport in November, indicating a 5.8% decrease as compared with the same month of 2011.

All types of transport presented negative annual variations. The **air** transport registered a drop of 21.1%. In turn, **bus** transport decreased 5.9% and **rail** transport 5.0%.

Local distance passengers decreased 5.3% for rail transport, and 5.8% for bus transport. Regional passengers distance remained for rail transport and decreased 6.2% for bus transport.

Finally, long-distance passengers decreased 4.3% both in rail transport and in bus transport.

### Annual and average rates of the number of passengers Inter-city transport by type of transport and distance



### Special and unscheduled transport

More than 46.7 million passengers used special and unscheduled transport in November, indicating a 5.2% increase in the annual rate.

Special transport passengers decreased 3.8%, reaching more than 34.4 million. Within this, school transport decreased 4.4% and work 1.6%.

In turn, unscheduled transport decreased 9%, as compared with the same month the previous year, reaching more than 12.2 million passengers.

## Passenger Transport Statistics

**November 2012**

Provisional data

### 1. Passenger transport

	Passengers transported (thousands)	% variation	
		Annual	Year-to-date average
<b>BY TYPE OF TRANSPORT</b>	387,799	-7.3	-3.1
City transport	235,330	-8.4	-4.0
Inter-city transport	105,754	-5.8	-1.8
Special and unscheduled transport	46,714	-5.2	-1.9

## 2. City transport

	Passengers transported (thousands)	% variation	
		Annual	Year-to-date average
<b>CITY TRANSPORT</b>	235,330	-8.4	-4.0
Metropolitan	95,469	-8.1	-3.9
Bus <sup>(1)</sup>	139,861	-8.6	-4.0

<sup>(1)</sup> This includes trams and funiculars

### 2.1 Metropolitan

	Passengers transported (thousands)	% variation	
		Annual	Year-to-date average
<b>TOTAL</b>	95,469	-8.1	-3.9
Barcelona	30,338	-8.5	-3.7
Bilbao	7,694	-2.8	-2.4
Madrid	51,066	-8.4	-4.5
Sevilla	1,195	-9.0	-7.0
Valencia/València	5,067	-10.3	-1.8
Palma	109	-2.5	-1.1

### 2.2 City bus transport

	Passengers transported (thousands)	% variation	
		Annual	Year-to-date average
<b>TOTAL</b>	139,861	-8.6	-4.0
Andalucía	18,375	-7.7	-3.3
Aragón	10,210	-5.9	-2.2
Asturias, Principado de	2,805	-9.6	-5.0
Canarias	4,351	-9.4	-2.9
Castilla y León	6,099	-9.8	-5.1
Castilla - La Mancha	1,868	-18.3	-8.5
Cataluña	23,211	-9.0	-2.2
Comunitat Valenciana	10,462	-9.7	-5.7
Extremadura	1,052	-9.9	-2.6
Galicia	5,071	-8.4	-2.2
Madrid, Comunidad de	39,170	-8.6	-5.1
Murcia, Región de	1,648	-9.8	-2.4
País Vasco	6,808	-4.3	-2.4
Other <sup>(1)</sup>	8,732	-10.1	-6.4

<sup>(1)</sup> In order to protect statistical secrecy, the passengers of the Autonomous Communities of Illes Balears, Cantabria, Comunidad Foral de Navarra and La Rioja and of the Autonomous Cities of Ceuta and Melilla have been grouped

### 3. Inter-city transport

	Passengers transported (thousands)	% variation	
		Annual	Year-to-date average
<b>INTER-CITY TRANSPORT</b>	105,754	-5.8	-1.8
Road	53,600	-5.9	-1.1
Local	36,342	-5.8	-1.2
Regional	15,884	-6.2	-1.0
Long-distance	1,374	-4.3	-0.5
Rail <sup>(1)</sup>	49,498	-5.0	-1.8
Local rail	45,137	-5.3	-1.8
Regional rail	2,645	0.0	-2.2
Long-distance rail	1,715	-4.3	-1.8
Air (domestic)	2,176	-21.1	-12.0
Sea (cabotage) <sup>(2)</sup>	480	-4.7	-2.1

<sup>(1)</sup> Local and regional rail include all rail operators and Long-distance rail only includes RENFE

<sup>(2)</sup> Estimated data

### 4. Special and unscheduled transport

	Passengers transported (thousands)	% variation	
		Annual	Year-to-date average
<b>SPECIAL AND UNSCHEDULED TRANSPORT</b>	46,714	-5.2	-1.9
Special	34,454	-3.8	-0.3
School	26,805	-4.4	-0.8
Work	7,650	-1.6	1.1
Unscheduled	12,260	-9.0	-5.0

For further information see INEbase - [www.ine.es/en/](http://www.ine.es/en/)

All press releases at: [www.ine.es/prensa/prensa\\_en.htm](http://www.ine.es/prensa/prensa_en.htm)

**Press Office:** Telephone numbers: 91 583 93 63 / 94 08 – Fax: 91 583 90 87 - [gprensa@ine.es](mailto:gprensa@ine.es)

**Information Area:** Telephone number: 91 583 91 00 – Fax: 91 583 91 58 – [www.ine.es/infoine](http://www.ine.es/infoine)