

7 February 2008

Transport of passengers statistics

December 2007. *Provisional data*

In December, the number of passengers using city transport decreased 0.2% in one year

The number of passengers using the inter-city transport decreased 0.2%

More than 255 million passengers used **the city transport** in December, (a yearly decrease of 0.2%). There was an increase of 1.4% in the metropolitan service and a decrease of 1.2% in the city bus service in December 2007.

On the other hand, **the inter-city transport** was used by nearly 149 million passengers, (a yearly decrease of 0.2%).

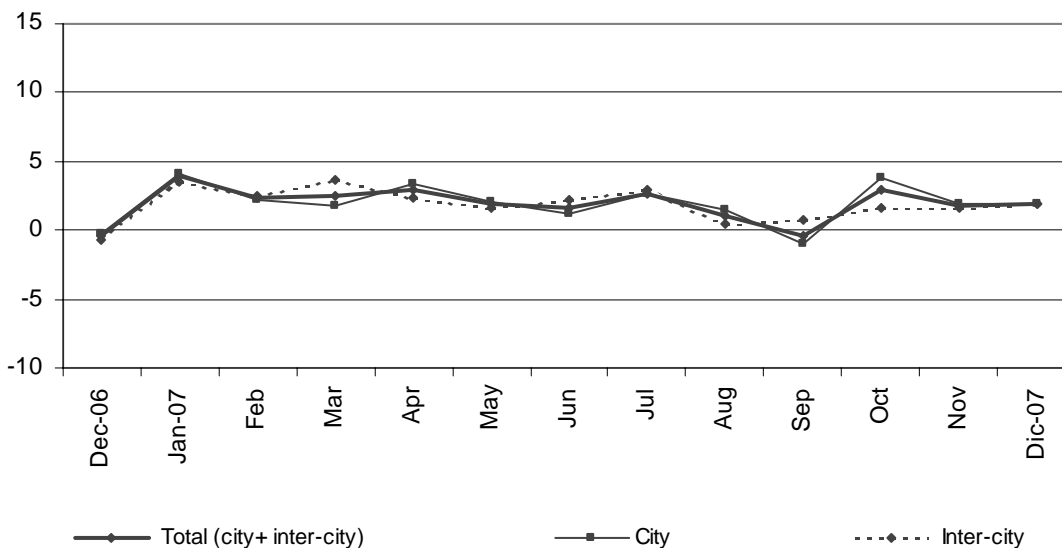
	No. of passengers (thousands)	% rate	
		Inter-annual	Accumulated inter-annual
City transport			
TOTAL	255,590	-0.21	1.95
Buses	155,362	-1.20	0.43
- Scheduled ¹	154,447	-1.20	0.41
- Non-scheduled	915	-1.81	3.12
Metropolitan	100,228	1.36	4.54
Inter-city transport			
TOTAL	148,977	-0.20	1.94
Road transport	99,021	1.50	3.18
- Scheduled ¹	83,242	0.40	2.49
- Non-scheduled	15,779	7.78	6.55
Railway transport	45,982	-4.20	-1.29
Air transport (domestic)	3,291	4.91	8.97
Sea transport (cabotage) ^{2, 3}	683	15.59	7.86

(1) City and Inter-city transport by road includes: general scheduled and especial scheduled (scholars and workers).

(2) Disembarked passengers only.

(3) Estimated data.

Variation rate in one year (%)



The general scheduled city bus service decreased 1.2%

In December, more than 147 million passengers used the general scheduled city bus service, which means a decrease of 1.2% in the inter-annual rate.

By Autonomous Communities, there were remarkable increases in Castilla – La Mancha (11.9%), Murcia (7.2%) and País Vasco (3.2%), and decreases in Canarias (6.5%), Madrid (4.6%) and Castilla y León (3.6%).

General scheduled city bus service

	No. of passengers (thousands)	% rate	
		inter-annual	Accumulated inter-annual
TOTAL	147,062	-1.18	0.25
Andalucía	21,176	2.29	0.33
Aragón	10,607	0.82	4.03
Asturias (Principado de)	3,171	2.66	1.55
Canarias	4,602	-6.49	-0.37
Castilla y León	6,025	-3.60	1.24
Castilla-La Mancha	1,361	11.91	13.54
Cataluña	24,641	-2.73	3.77
Comunitat Valenciana	11,609	-2.11	0.85
Extremadura	1,010	-1.14	-0.92
Galicia	5,059	0.53	1.07
Madrid (Comunidad de)	41,290	-4.58	-5.28
Murcia (Región de)	1,688	7.21	3.89
País Vasco	6,130	3.24	3.04
Others ¹	8,693	7.45	6.95

¹ In order to protect the statistical secrecy, Autonomous Communities are grouped in those cases in which data at a company level could be identified.

The special scheduled city bus service decreased 1.6% with regard to December 2006.

In December, more than 5.2 million scholars used a special and scheduled city bus line, 3.5% less than in the same month of 2006.

On the other hand, more than 2.1 million workers used a special and scheduled city bus line, 3.3% more than in December 2006.

Special scheduled city bus

	No. of passengers (thousands)	% rate	
		inter-annual	Accumulated inter-annual
TOTAL	7,385	-1.57	3.47
Scholars	5,228	-3.46	2.81
Workers	2,157	3.33	5.16

The number of passengers using the metropolitan service increased 1.4% in December with regard to the same month in 2006. There were remarkable increases in Bilbao (6.4%) and Barcelona (4%), while in Valencia and Madrid there were decreases, 1.6% and 0.3% respectively.

Metropolitan

	No. of passengers (thousands)	% rate	
		inter-annual	Accumulated inter-annual
TOTAL	100,228	1.36	4.54
Barcelona	29,851	3.99	3.67
Bilbao	7,455	6.37	7.63
Madrid	57,727	-0.27	4.61
Valencia	5,195	-1.63	4.73

The inter-city transport decreased 0.2% with regard to December 2006.

The number of passengers using the inter-city transport was nearly 149 million in December, which means a yearly decrease of 0.2%.

The inter-city transport by air increased 4.9%. On the contrary, the inter-city transport by rail decreased 4.2% with regard to December 2006.

The number of passengers using the inter-city transport by road increased 1.5%. There were increases in the non-scheduled transport (7.8%) and in the special scheduled transport (1.9%).

Inter-city Transport

	No. of passengers (thousands)	% rate	
		Interannual	Accumulated interannual
TOTAL	148,977	-0.20	1.94
Road transport	99,021	1.50	3.18
General Scheduled	53,797	-0.40	1.92
Special scheduled	29,445	1.89	3.63
- Scholars	20,421	1.26	3.85
- Workers	9,024	3.35	3.17
Non-scheduled	15,779	7.78	6.55
Railway transport	45,982	-4.20	-1.29
RENFE	39,603	-4.53	-1.74
- AVE - Long distance ²	1,498	-0.13	1.40
- Regional ³	2,387	-2.61	-0.21
- Local	35,718	-4.84	-1.97
Narrow gauge trains	6,379	-2.10	1.50
Air (domestic)	3,291	4.91	8.97
Sea transport (cabotage) ¹	683	15.59	7.86

(1) Estimated data

(2) Long Distance includes long distance and long distance high speed.

(3) Regional includes regional and regional high speed.

City and inter-city transport of passengers in 2007

More than **3.176 million passengers** used the city transport in 2007, which means an **increase of 1.9%** in comparison with 2006.

City transport

	No. of passengers 2007 (thousands)	No. of passengers 2006 (thousands)	Inter-annual rate
TOTAL CITY TRANSPORT	3,176,429	3,115,646	1.95

General scheduled city bus service

TOTAL	1,856,489	1,851,838	0.25
Andalucía	244,325	243,531	0.33
Aragón	129,908	124,877	4.03
Asturias (Principado de)	39,627	39,021	1.55
Canarias	58,548	58,763	-0.37
Castilla y León	75,071	74,148	1.24
Castilla-La Mancha	16,716	14,722	13.54
Cataluña	340,547	328,175	3.77
Comunitat Valenciana	147,977	146,729	0.85
Extremadura	13,405	13,529	-0.92
Galicia	65,983	65,284	1.07
Madrid (Comunidad de)	517,881	546,727	-5.28
Murcia (Región de)	21,638	20,828	3.89
País Vasco	74,859	72,653	3.04
Others ¹	110,004	102,851	6.95

Special scheduled city bus service

TOTAL	96,852	93,603	3.47
Scholars	69,075	67,189	2.81
Workers	27,776	26,414	5.16

Non-scheduled urban transport

TOTAL	15,497	15,027	3.12
--------------	---------------	---------------	-------------

Metropolitan

TOTAL	1,207,592	1,155,178	4.54
Barcelona	366,355	353,376	3.67
Bilbao	85,864	79,781	7.63
Madrid	687,729	657,432	4.61
Valencia	67,644	64,589	4.73

(1) In order to protect the statistical secrecy, Autonomous Communities are grouped in those cases in which data at a company level could be identified.

During 2007, nearly 1.856 million passengers used the **general scheduled city bus service**, 0.3%% more than in 2006.

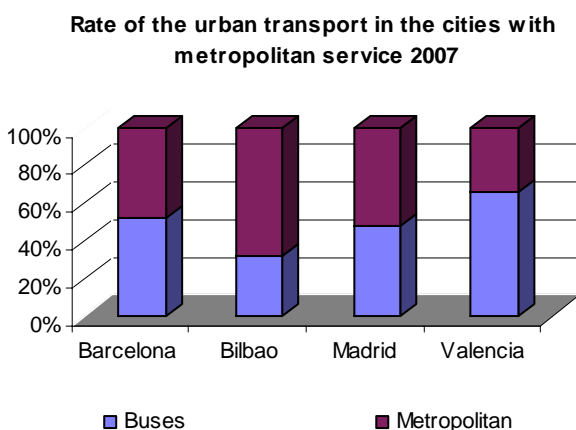
By Autonomous Communities, there were remarkable increases in Castilla – La Mancha (13.5%), Aragón (4%), Murcia (3.9%) and Cataluña (3.8%), and decreases of 5.3% in Madrid and of 0.9% in Extremadura.

On the other hand, **the special scheduled city bus service** was used by more than 96 million passengers in 2007, which means an increase of 3.5% due especially to the increase of workers using a special and scheduled city bus line (5.2%).

The non-scheduled city bus service increased 3.1% with regard to 2006.

During 2007, the number of passengers using the metropolitan city transport increased 4.5%. There were remarkable increases in all the Spanish metropolitan city services, especially in Bilbao (7.6%), followed by Valencia (4.7%), Madrid (4.6%) and Barcelona (3.7%).

It is worth mentioning that the passengers using the city transport used more the metropolitan service than the bus service in three of the four cities with a metropolitan service (Barcelona, Bilbao and Madrid). In Valencia it was the opposite.



More than **1.984 million passengers used the inter-city transport in 2007**, which means an increase of 1.9% in comparison with 2006.

The number of passengers using the inter-city transport by road increased 3.2%: 2.5% in the scheduled transport and 6.6% in the non-scheduled transport. On the other hand, the number of passengers using the inter-city transport by rail increased 1.3%.

The inter-city transport by air increased 9.0%, while the sea transport increased 7.9%.

Inter-city Transport

	No. of passengers 2007 (thousands)	No. of passengers 2006 (thousands)	Inter-annual rate
TOTAL	1,984,484	1,946,541	1.95
Road transport	1,339,820	1,298,472	3.18
Total scheduled	1,103,694	1,076,865	2.49
Scheduled	732,720	718,886	1.92
Special scheduled	370,974	357,979	3.63
- Scholars	253,673	244,279	3.85
- Workers	117,301	113,700	3.17
Non-scheduled	236,126	221,607	6.55
Railway transport	591,122	598,849	-1.29
RENFE	506,651	515,623	-1.74
- Long distance ²	18,591	18,334	1.40
- Regional ³	31,311	31,377	-0.21
- Local	456,749	465,912	-1.97
Narrow gauge trains	84,471	83,226	1.50
Air (domestic)	44,400	40,745	8.97
Sea transport (cabotage) ¹	9,141	8,475	7.86

(1) Estimated data december

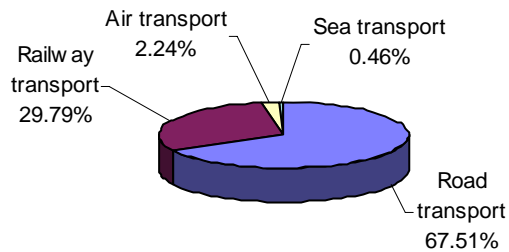
(2) Long Distance includes long distance and long distance high speed.

(3) Regional includes regional and regional high speed.

In 2007, the rate of passengers in each type of inter-city transport was very similar to the rate of last year.

The transport by road kept on being the most important part of the inter-city transport (67.5%), followed by the transport by rail (29.8%). The transport by air was 2.2% and the sea transport was 0.5% of the total.

Iner-city transport share of each type of transport 2007



For further information see INEbase-www.ine.es/en/welcome_en.htm All press releases at: www.ine.es/en/prensa/prensa_en.htm

Press office: Telephone: 91 583 93 63 / 94 08 – Fax: 91 583 90 87 - gprensa@ine.es

Information area: Telephone: 91 583 91 00 – Fax: 91 583 91 58 – www.ine.es/infoine
