

**Passenger Transport Statistics
December 2009. Provisional data**

The number of passengers using city transport decreases 2.6% in December, as compared with the same month the previous year

The number of passengers using inter-city transport decreases 3.4% in the interannual rate

More than 250 million passengers used the **city transport** service in December, representing a 2.6% decrease with regard to the same month of 2008. Decreases of 2.7% were registered in the bus service, and of 2.5% in the metropolitan service.

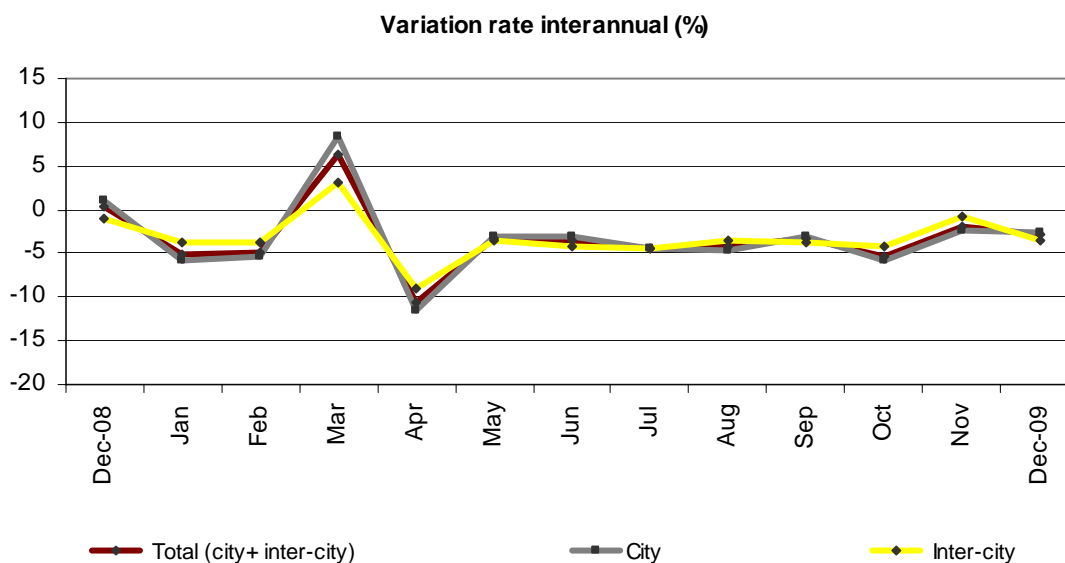
On the other hand, **inter-city transport** was used by almost 135.9 million passengers, 3.4% less than in the same month the previous year.

	No. of passengers (thousands)	Variation rate %	
		Interannual	Accumulated interannual
City transport			
TOTAL	250,175	-2.6	-3.7
Buses	149,644	-2.7	-2.9
- Scheduled	148,041	-2.7	-2.9
General scheduled	141,018	-2.7	-2.9
Special scheduled	7,023	-3.9	-1.7
- Unscheduled	1,603	2.5	-2.1
Metropolitan	100,531	-2.5	-5.1
Inter-city transport			
TOTAL	135,861	-3.4	-3.5
Road transport	88,252	-3.5	-2.2
- Scheduled ¹	77,074	-2.9	-1.6
- Unscheduled	11,178	-7.2	-5.6
Rail transport	44,186	-3.8	-6.0
Air transport (domestic)	2,862	3.8	-6.8
Sea transport (cabotage) ^{2, 3}	561	2.3	-2.1

¹ Inter-city transport by road includes: general scheduled and special scheduled (students and workers)

² Disembarked passengers only

³ Estimated data



General scheduled city transport by bus decreases 2.7%

More than 141 million passengers used the general scheduled city bus this past month of December, 2.7% less than in the same month of 2008.

By Autonomous Community, it is worth noting the interannual increase registered in Castilla y León (1.3%).

General scheduled city bus service

	No. of passengers (thousands)	Variation rate %	
		interannual	Accumulated interannual
TOTAL	141,018	-2.7	-2.9
Andalucía	19,814	-3.0	-2.4
Aragón	10,605	-3.9	-7.4
Asturias (Principado de)	3,363	-1.8	-3.0
Canarias	3,239	-4.0	-6.3
Castilla y León	6,409	1.3	-1.6
Castilla-La Mancha	1,816	-1.8	-1.8
Cataluña	24,216	0.4	-2.7
Comunitat Valenciana	10,947	-6.3	-6.6
Extremadura	952	-7.0	-5.6
Galicia	5,035	-2.0	-1.3
Madrid (Comunidad de)	38,247	-4.4	-1.1
Murcia (Región de)	1,436	-3.0	-5.4
País Vasco	6,136	-2.4	-4.3
Others ¹	8,803	1.0	-1.5

¹ In order to protect statistical secrecy, Autonomous Communities are grouped in those cases in which data at a company level could be identified.

Transport by special scheduled city bus service decreases 3.9%

In the month of December, the special scheduled city bus service decreased 3.9% in the interannual rate. The number of passengers transported decreased 3.6% in the special scheduled school bus service and decreased 4.8% in the special scheduled work bus service.

Special scheduled city bus

	No. of passengers (thousands)	Variation rate %	
		interannual	Accumulated interannual
TOTAL	7,023	-3.9	-1.7
Students	5,299	-3.6	0.0
Workers	1,724	-4.8	-6.2

Transport by metropolitan decreases 2.5% in the interannual rate

The number of passengers using the metropolitan decreased 2.5% in December as compared with the same month of 2008. Worth noting was the 4.9% increase in the number of Bilbao metropolitan users.

Metropolitan

	No. of passengers (thousands)	Variation rate %	
		interannual	Accumulated interannual
TOTAL	100,531	-2.5	-5.1
Barcelona	30,321	-6.2	-4.3
Bilbao	7,899	4.9	0.6
Madrid	56,795	-1.6	-6.3
Valencia ¹	5,516	-1.0	-4.4

¹ Estimated data by FF.CC. Generalitat Valenciana

Inter-city transport decreases 3.4% as compared with December 2008

The number of passengers using inter-city transport surpassed 135.8 million during the month of December, representing an interannual decrease of 3.4%.

In transport by road, the number of passengers using the bus for inter-city commutes decreased 3.5% as compared with the same month the previous year. Decreases were registered among users of all types of road transport, 2.2% in the general scheduled modality, 4.4% in the special scheduled modality and 7.2% in the unscheduled modality as compared with the same month last year.

The number of passengers by railway decreased 3.8% in the interannual rate, but within the latter, Regional rail transport decreased 13.0%, whereas AVE Long-distance increased 3.6% in December as compared with the same month the previous year.

Conversely, air transport registered an increase of 3.8% in the interannual rate as compared with December 2008.

Inter-city transport

	No. of passengers (thousands)	Variation rate %	
		Interannual	Accumulated interannual
TOTAL	135,861	-3.4	-3.5
Road transport	88,252	-3.5	-2.2
General scheduled	52,997	-2.2	-1.2
Special scheduled	24,077	-4.4	-2.3
- Students	17,559	-4.4	-0.4
- Workers	6,518	-4.2	-6.8
- Unscheduled	11,178	-7.2	-5.6
Rail transport	44,186	-3.8	-6.0
RENFE	37,201	-4.2	-6.6
- AVE - Long distance ¹	1,966	3.6	-0.6
- Regional ²	2,535	-13.0	-1.4
- Local	32,700	-3.9	-7.3
Narrow gauge trains	6,985	-1.7	-2.6
Air transport (domestic)	2,862	3.8	-6.8
Sea transport (cabotage) ³	561	2.3	-2.1

¹ Long distance includes long distance and long distance high speed

² Regional includes regional and regional high speed

³ Estimated data

City and inter-city transport of passengers in 2009

Approximately 3,017 million passengers used **city transport** in 2009, indicating a decrease of 3.7% in comparison with the year 2008.

General scheduled city bus transport decreased 2.9% as compared with the previous year. A 1.7% decrease was registered in the special scheduled city bus service, whereas special scheduled school transport remained unchanged and special scheduled work transport registered a decrease of 6.2% in the interannual rate.

Conversely, **the unscheduled city bus service** decreased 2.1% as compared with last year.

The number of passengers travelling by **metropolitan** decreased 5.1% in 2009. The number of users decreased for all Spanish metropolitan services, except for the Bilbao service, which increased 0.6%.

City transport

	No. of passengers 2009 (thousands)	No. of passengers 2008 (thousands)	Interannual variation rate %
TOTAL CITY TRANSPORT	3,016,880	3,133,705	-3.7

General scheduled city bus service

TOTAL	1,750,978	1,803,877	-2.9
Andalucía	247,566	253,585	-2.4
Aragón	126,268	136,332	-7.4
Asturias (Principado de)	43,921	45,299	-3.0
Canarias	40,273	42,972	-6.3
Castilla y León	75,268	76,519	-1.6
Castilla-La Mancha	22,516	22,929	-1.8
Cataluña	310,626	319,371	-2.7
Comunitat Valenciana	134,727	144,259	-6.6
Extremadura	12,616	13,366	-5.6
Galicia	63,117	63,966	-1.3
Madrid (Comunidad de)	474,880	480,189	-1.1
Murcia (Región de)	17,665	18,682	-5.4
País Vasco	70,783	73,975	-4.3
Others ¹	110,752	112,433	-1.5

Special scheduled city bus service

TOTAL	86,798	88,293	-1.7
- Students	63,507	63,475	0.0
- Workers	23,291	24,818	-6.2

Unscheduled city transport

TOTAL	23,035	23,527	-2.1
--------------	---------------	---------------	-------------

Metropolitan

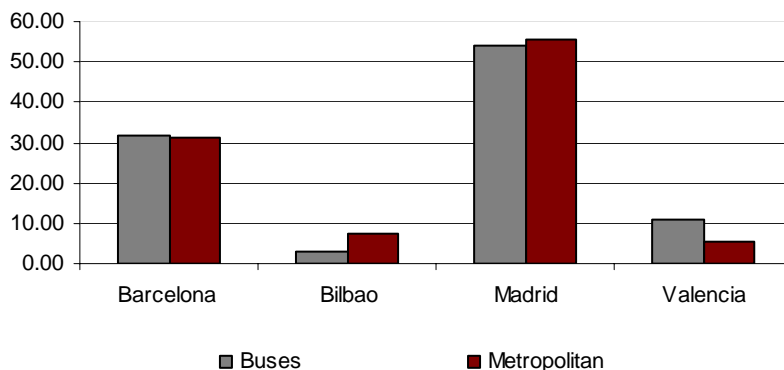
TOTAL	1,156,069	1,218,008	-5.1
Barcelona	361,547	377,789	-4.3
Bilbao	87,038	86,476	0.6
Madrid	642,276	685,539	-6.3
Valencia ²	65,208	68,204	-4.4

(1) In order to protect statistical secrecy, Autonomous Communities are grouped in those cases in which data at a company level could be identified.

(2) Estimated data December

Regarding distribution of **city transport** in cities with a metropolitan service, it was worth noting that in Madrid and Bilbao, a larger number of passengers used the metropolitan than the bus. In Valencia, in contrast, the number of passengers using the bus was practically double the number using the metropolitan.

Rate of the urban transport in the cities with metropolitan service 2009



Nearly 1,769 million passengers used **inter-city transport** in 2009, indicating a decrease of 3.5% in comparison with 2008.

The number of passengers using inter-city transport by road decreased 2.2%, with growth of 1.6% in scheduled transport and a decrease of 5.6% in unscheduled transport. On the other hand, the number of passengers using inter-city transport by rail decreased 6%. Within the latter, passengers using local rail decreased 7.3%, whereas those using AVE Long-distance trains remained at nearly the same level as in 2008.

Inter-city transport by air decreased 6.8%, while transport by sea decreased 2.1%, as compared with the year 2008.

Inter-city transport

	No. of passengers 2009 (thousands)	No. of passengers 2008 (thousands)	Interannual variation rate %
TOTAL	1,768,897	1,832,922	-3.5
Road transport	1,169,289	1,195,138	-2.2
Total scheduled	1,001,566	1,017,525	-1.6
General scheduled	700,012	708,835	-1.2
Special scheduled	301,554	308,690	-2.3
- Students	216,692	217,608	-0.4
- Workers	84,862	91,083	-6.8
Unscheduled	167,723	177,612	-5.6
Rail transport	552,600	587,803	-6.0
RENFE	466,796	499,746	-6.6
- AVE - Long distance ²	23,126	23,256	-0.6
- Regional ³	32,371	32,821	-1.4
- Local	411,298	443,669	-7.3
Narrow gauge trains	85,805	88,057	-2.6
Air transport (domestic)	38,287	41,071	-6.8
Sea transport (cabotage) ¹	8,721	8,910	-2.1

(1) Estimated data December

(2) Long distance includes long distance and long distance high speed.

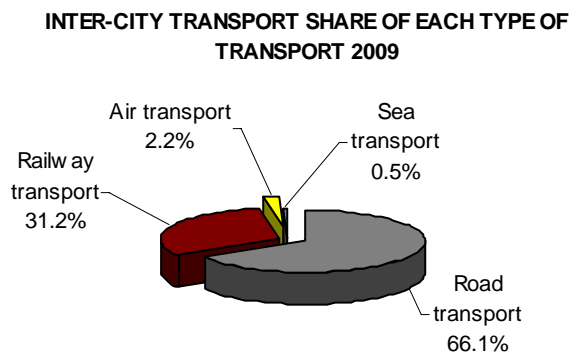
(3) Regional includes regional and regional high speed.

Passenger distribution by means of inter-city transport

In 2009, the percentage of passengers in each type of inter-city transport was very similar to the distribution from the previous year.

Transport by road remained the most important part of inter-city transport (66.1%), followed by transport by rail (31.2%).

Transport by air accounted for 2.2%, and transport by sea was 0.5%, of the total.



For further information see **INEbase-www.ine.es** All press releases at: **www.ine.es/prensa/prensa_en.htm**

Press Office: Telephone numbers: 91 583 93 63 / 94 08 – Fax: 91 583 90 87 - gprensa@ine.es

Information Area: Telephone: 91 583 91 00 – Fax: 91 583 91 58 – www.ine.es/infoine
