

23 April 2015

Economically Active Population Survey (EAPS)

First quarter of 2015

Main results

Employment registers a decrease of 114,300 persons in this quarter as compared with the fourth quarter of the previous year (variation of -0.65%), reaching a total of 17,454,800 employed persons. The quarterly employment variation rate stands at 0.43% for deseasonalised terms. Employment increases by 504,200 in the last 12 months. The annual variation is 2.97% .

Private employment registers a decrease of 143,500 persons and public employment records an increase of 29,200 persons. In the last 12 months, employment increases by 468,000 persons in the private sector and by 36,200 in the public sector.

In the first quarter, the total number of wage earners with a permanent contract increases by 25,300 persons, while that of wage earners with a temporary contract decreases by 114,500. Within the last year, permanent employment increased by 289,700 and temporary employment did so by 174,800. The number of independent workers or businesspersons decreases by 23,000 this quarter, and increases by 40,700 in the last 12 months.

This year, employment increases in *Construction* (30,300 more employed persons), *Industry* (2,300), and it decreases in *Services* (135,400 less) and *Agriculture* (11,500). Within the last year it increases in *Services* (334,900 more employed persons), *Industry* (142,500) and *Construction* (118,500), and it decreases in *Agriculture* (91,700 less).

By Autonomous Community, the greatest increases in employment are registered in Canarias (12,800 more employed persons), and Andalucía (1,900). The greatest decreases are recorded in Cataluña (24,800 less employed persons), Illes Balears (22,700) and Comunitat Valenciana (19,000). Within the last year almost all Autonomous Communities increase their employment rates. The sharpest increases are registered in Comunidad de Madrid (150,500 more), Comunitat Valenciana (83,700) and Andalucía (71,100).

The number of unemployed persons decreases by 13,100 persons this quarter as compared with the fourth quarter (variation of -24.0%), standing at 5,444,600 persons. The quarterly variation of unemployment is -2.51% in deseasonalised terms. In the last 12 months, unemployment decreased by 488,700 persons.

The unemployment rate stands at 23.78% , seven hundredths over that of the previous quarter. Within the last year, the unemployment rate decreased by 2,15 points.

By Autonomous Community, the greatest decreases in unemployment as compared to the previous quarter are recorded in Andalucía (36,600 less unemployed persons), Principado de Asturias (11,300) and Región de Murcia (10,000). The highest increases are registered in Comunitat Valenciana e Illes Balears (19,400 more in each of them) and Galicia (11,900). The unemployment reduction in annual terms is widespread. Comunitat Valenciana (94,300 less unemployed persons), Cataluña (82,100) and Comunidad de Madrid (74,100) record the greatest decreases.

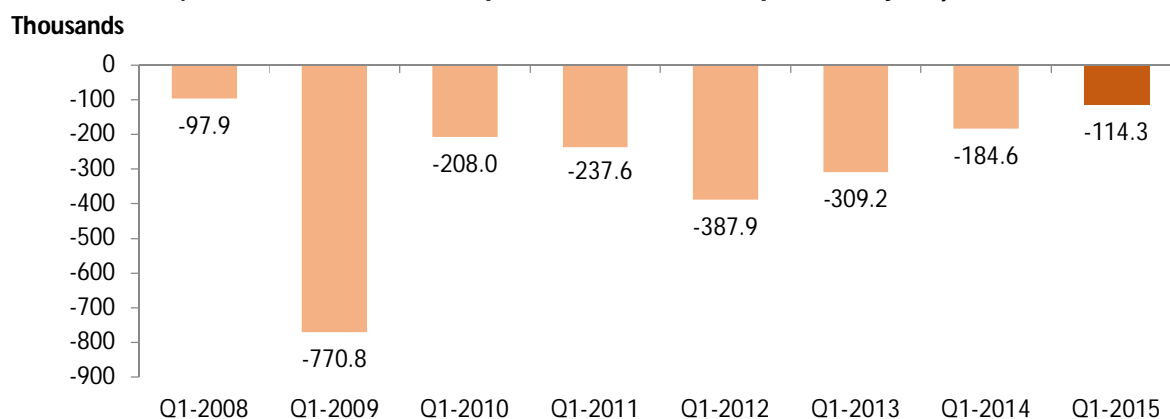
This quarter, the number of economically active persons decreases by 127,400, up to 22,899,400. The activity rate decreases by 0.32 points up to 59.45% . In the last year, the active population increased by 15,500 persons.

Employment

The number of employed persons decreased by 114,300 in the first quarter of 2015, standing at 17,454,800. The quarterly variation rate of employment stood at -0.65% . This was the lowest decrease of employment in a first quarter since 2008.

The employment rate (percentage of employed persons as compared with the population aged 16 years old and over) stood at 45.32% , that is, 29 hundredths lower than in the fourth quarter of the previous year. As for the annual variation rate, it increased by 1.27 points.

**Quarter-on-quarter employment evolution, in thousands
(variation of 1Q as compared with 4Q of the previous year)**



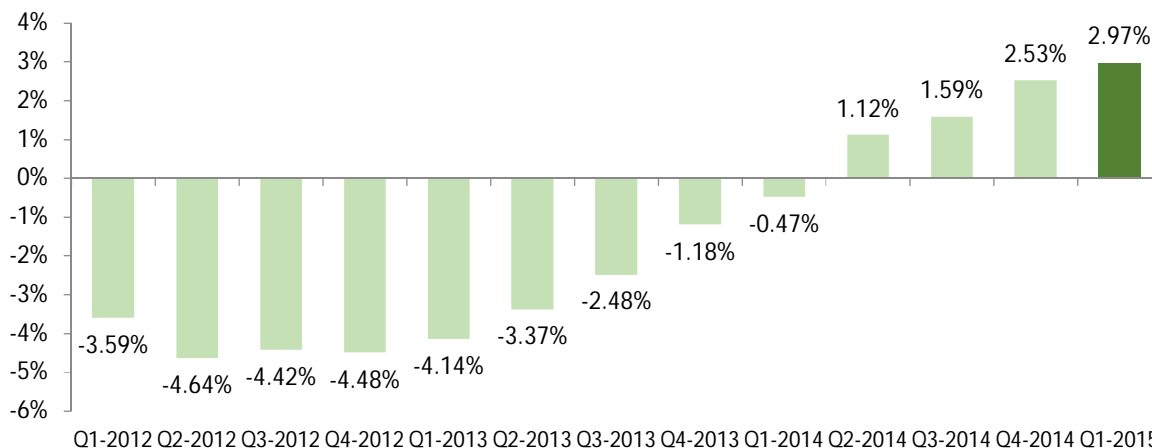
This quarter, employment decreased both among men (38,100 less) and women (76,200 less).

By nationality, employment decreased by 86,300 among Spanish nationals and by 28,000 among foreign nationals.

By age group, increases in employment were recorded among persons aged 40-44 (11,800 more), and those aged 55 years and over (48,000). However, the number of employed persons decreased in the remaining groups of age, particularly in the 25-39 years old group (almost 125,000 less persons employed).

In the last 12 months, employment has increased by 504,200 persons, (354,600 men and 149,600 women). The annual variation rate of employment was 2.97%, that is, 44 hundredths more than in the previous quarter.

Evolution of the total number of employed persons, annual rate



The number of employed persons increased this quarter in *Construction* (30,300 more persons), and *Industry* (2,300). In turn, it decreased in *Services* (135,400 less employed persons) and *Agriculture* (11,500 less).

In the last year, the employment increased in *Services* (334,900 more employed persons), in *Industry* (142,500) and in *Construction* (118,500). In turn, it decreased in *Agriculture* (91,700 less).

Full-time employment decreased by 130,600 persons this quarter, whilst the number of part-time employed persons increased by 16,300. The percentage of persons working part-time increased two tenths, reaching 16.25%.

In the last twelve months, full-time employment increased by 413,600 and part-time employment did so by 90,600.

The number of wage earners decreased by 89,200 this quarter. Those with a permanent contract increased by 25,300, and those with a temporary contract decreased by 114,500. The temporary employment rate decreased by 65 hundredths, reaching 23.60%.

In turn, the total number of self-employed workers decreased by 23,000 persons this quarter. Only the group of entrepreneurs without wage earners and independent workers increased (18,600).

The number of wage earners increased by 464,400 over the last 12 months, and that of self-employed workers did so by 40,700, mainly due to the increase of 44,500 entrepreneurs without wage earners and independent workers. Permanent employment increased by 289,700 persons and temporary employment did so by 174,800.

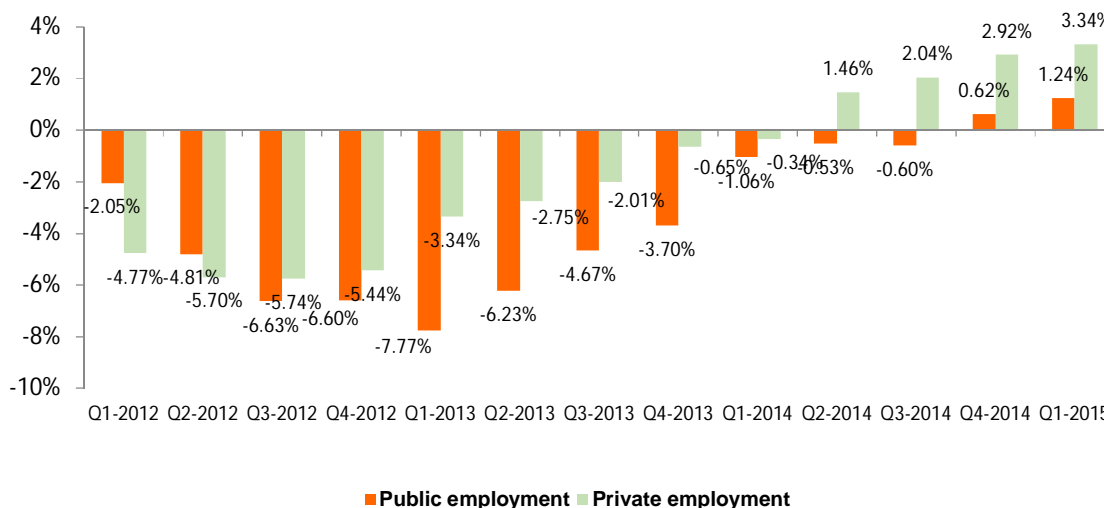
Private employment¹ decreased by 143,500 persons this quarter, standing at 14,498,100. In turn, public employment² increased by 29,200 persons, reaching 2,956,700.

Quarter-on-quarter employment evolution by nature of the employer, in thousands (variation of 1Q as compared with 4Q of the previous year)



Private employment registered an annual variation of 3.34%. In turn, employment in the public sector recorded an increase of 1.24%. Over the last 12 months, employment increased by 468,000 persons in the private sector and by 36,200 in the public sector.

Employment evolution by nature of employer, annual rate



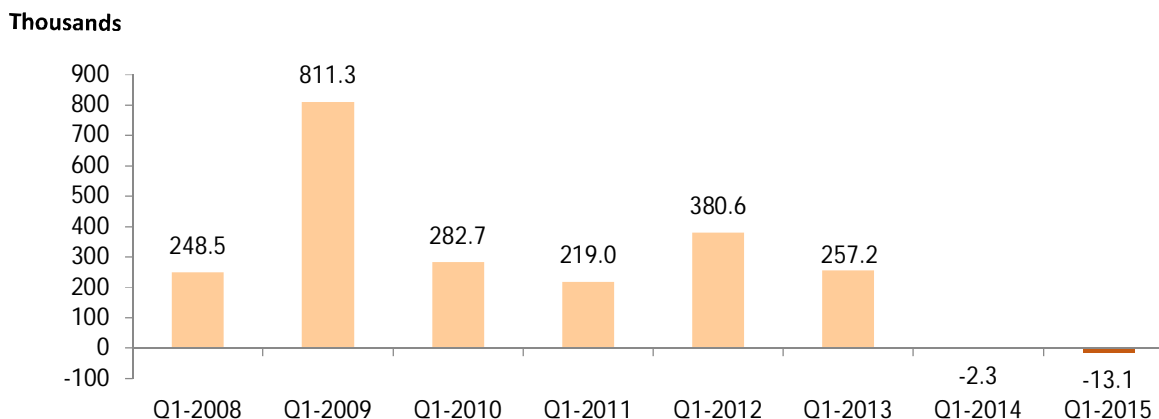
¹ Employment in the private sector includes: wage earners from the private sector, employers, independent workers and businesspersons without wage earners, members of a cooperative, family assistance and other professional situations.

² Employment in the public sector includes all the wage earners of public enterprises and of the National and Regional Administrations, including both workers contributing to the SS and those attached to an Insurance society.

Unemployment and unemployment rate

Unemployment decreased by 13,100 persons this quarter. This is the greatest decrease in the unemployment rate for the first quarter since 2005. The total number of unemployed persons stood at 5,444,600. In relative terms, unemployment decreased 0.24% this quarter.

**Quarter-on-quarter unemployment evolution, in thousands
(variation of 1Q as compared with 4Q of the previous year)**



The unemployment rate increased by seven hundredths, standing at 23.78%. Within the last 12 months, the unemployment rate had decreased by 2.15 points.

By sex, men concentrated the unemployment decrease this quarter, with 21,400 less and up to a 2,802,300 total. Among women, the figure increased by 8,300, up to 2,642,400 unemployed women.

The male unemployment rate decreased six hundredths, reaching 22.74%, whilst the female rate increased by 24 hundredths, down to 24.98%. Although the composition of unemployment observed since the year 2008 remained practically unaltered, with relatively little distance between the male and female rates, and a greater number of unemployed men than unemployed women, said distance widened in the last quarters up to 2.24 points, due to a better relative evolution among men.

By age group, unemployment decreased among young persons aged 20-24 (34,300 less unemployed persons) and among those aged 55 and over (15,300 more). On the contrary, it increased among those aged 25-54 (33,900 more unemployed persons).

By nationality, unemployment decreased by 16,800 among Spanish nationals and increased by 3,700 among foreign nationals. The unemployment rate for the foreign population was 33.65%, that is, a 11-point difference as compared with that of persons with Spanish nationality (22.42%).

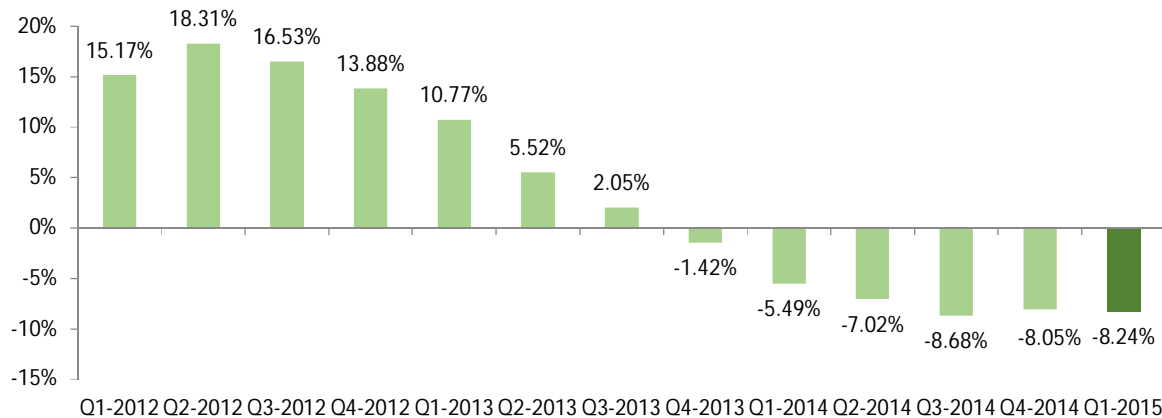
This quarter, unemployment decreased in *Construction* (7,200 less unemployed persons) and *Industry* (4,200). In turn, it increased in *Services* (35,300 more unemployed persons) and in *Agriculture* (9,700).

Unemployment decreased by 21,300 among those persons seeking their first job and unemployed persons who lost their job over a year ago increased by 25,500.

The decrease in the unemployment annual variation rate was -8.24% . The total figure of unemployed persons decreased by 488,700 persons in one year, with a decrease of 314,300 for men and 174,400 for women.

By age and in annual terms, the unemployment reduction affected persons aged 20-54.

Evolution of the total number of unemployed persons, annual rate



Over the last twelve months, unemployment decreased in *Services* (165,100 less unemployed persons), *Construction* (84,100), and *Industry* (45,700). In turn, it increased in *Agriculture* (39,300 more).

For its part, the number of unemployed persons who lost their jobs over one year ago decreased by 247,200, whilst the number of unemployed persons seeking their first job increased by 14,100.

Economically Active Population Survey First Quarter 2015

National results

(Continues)

	Current quarter	Variation on previous quarter		Variation on same quarter, previous year	
		Difference	Percentage	Difference	Percentage
1. Population aged 16 years and over by sex and labour status					
BOTH SEXES					
Population aged 16 years and over	38.517,2	-6,2	-0,02	33,6	0,09
Active population	22.899,4	-127,4	-0,55	15,5	0,07
- Employed	17.454,8	-114,3	-0,65	504,2	2,97
- Unemployed	5.444,6	-13,1	-0,24	-488,7	-8,24
Inactive	15.617,8	121,2	0,78	18,1	0,12
Activity rate	59,45	-0,32	-	-0,01	-
Unemployment rate	23,78	0,07	-	-2,15	-
Population aged 16 to 64 years	30.234,5	-33,3	-0,11	-106,8	-0,35
Activity rate (16-64)	75,26	-0,34	-	0,29	-
Unemployment rate (16-64)	23,90	0,08	-	-2,15	-
Employment rate (16-64)	57,28	-0,32	-	1,83	-
MALES					
Population aged 16 years and over	18.767,1	-6,6	-0,04	9,4	0,05
Active population	12.322,4	-59,5	-0,48	40,3	0,33
- Employed	9.520,2	-38,1	-0,40	354,6	3,87
- Unemployed	2.802,3	-21,4	-0,76	-314,3	-10,08
Inactive	6.444,7	52,9	0,83	-30,9	-0,48
Activity rate	65,66	-0,29	-	0,18	-
Unemployment rate	22,74	-0,06	-	-2,63	-
Population aged 16 to 64 years	15.161,7	-19,9	-0,13	-59,6	-0,39
Activity rate (16-64)	80,71	-0,31	-	0,53	-
Unemployment rate (16-64)	22,87	-0,04	-	-2,63	-
Employment rate (16-64)	62,25	-0,21	-	2,51	-
FEMALES					
Population aged 16 years and over	19.750,1	0,5	0,00	24,2	0,12
Active population	10.577,0	-67,9	-0,64	-24,8	-0,23
- Employed	7.934,6	-76,2	-0,95	149,6	1,92
- Unemployed	2.642,4	8,3	0,32	-174,4	-6,19
Inactive	9.173,1	68,3	0,75	48,9	0,54
Activity rate	53,55	-0,34	-	-0,19	-
Unemployment rate	24,98	0,24	-	-1,59	-
Population aged 16 to 64 years	15.072,7	-13,3	-0,09	-47,3	-0,31
Activity rate (16-64)	69,78	-0,37	-	0,05	-
Unemployment rate (16-64)	25,09	0,23	-	-1,59	-
Employment rate (16-64)	52,27	-0,44	-	1,14	-

2. Spanish population⁽¹⁾ aged 16 years and over by labour status

SPANISH POPULATION AGED 16 YEARS AND OVER	34.762,5	19,1	0,05	125,9	0,36
Active population	20.130,7	-103,1	-0,51	98,5	0,49
- Employed	15.617,7	-86,3	-0,55	443,0	2,92
- Unemployed	4.513,1	-16,8	-0,37	-344,4	-7,09
Inactive	14.631,8	122,2	0,84	27,4	0,19
Activity rate	57,91	-0,33	-	0,07	-
Unemployment rate	22,42	0,03	-	-1,83	-

⁽¹⁾ including dual nationality

April 23rd 2015

National results

(Continuation)

	Current quarter	Variation on previous quarter		Variation on same quarter, previous year	
		Difference	Percentage	Difference	Percentage

3. Foreign population aged 16 years and over by labour status

FOREIGN POPULATION AGED 16 YEARS AND OVER	3.754,7	-25,3	-0,67	-92,3	-2,40
Active population	2.768,7	-24,3	-0,87	-83,0	-2,91
- Employed	1.837,1	-28,0	-1,50	61,2	3,45
- Unemployed	931,6	3,7	0,40	-144,2	-13,41
Inactive	986,0	-1,0	-0,10	-9,3	-0,93
Activity rate	73,74	-0,15	-	-0,39	-
Unemployment rate	33,65	0,43	-	-4,08	-

4. Employed by sex, age group and economic sector

BOTH SEXES	17.454,8	-114,3	-0,65	504,2	2,97
16 to 19 years	71,6	-10,2	-12,43	-0,5	-0,66
20 to 24 years	669,0	-6,2	-0,92	34,0	5,36
25 to 29 years	1.568,8	-40,1	-2,49	-7,7	-0,49
30 to 34 years	2.249,2	-43,7	-1,91	-54,8	-2,38
35 to 39 years	2.815,6	-40,0	-1,40	27,1	0,97
40 to 44 years	2.749,0	11,8	0,43	125,1	4,77
45 to 49 years	2.469,8	-30,6	-1,22	69,9	2,91
50 to 54 years	2.207,8	-3,3	-0,15	104,7	4,98
55 and over	2.654,0	48,0	1,84	206,3	8,43
MALES	9.520,2	-38,1	-0,40	354,6	3,87
16 to 19 years	42,8	-7,1	-14,17	-1,2	-2,66
20 to 24 years	346,5	-5,0	-1,42	17,5	5,32
25 to 29 years	809,1	-14,6	-1,78	12,8	1,60
30 to 34 years	1.182,9	-27,4	-2,27	-25,7	-2,13
35 to 39 years	1.519,3	-32,3	-2,08	11,8	0,78
40 to 44 years	1.531,2	12,5	0,82	91,7	6,37
45 to 49 years	1.375,8	-3,0	-0,22	65,0	4,96
50 to 54 years	1.216,3	6,9	0,57	60,0	5,19
55 and over	1.496,3	31,9	2,18	122,8	8,94
FEMALES	7.934,6	-76,2	-0,95	149,6	1,92
16 to 19 years	28,8	-3,1	-9,72	0,7	2,48
20 to 24 years	322,5	-1,3	-0,39	16,5	5,40
25 to 29 years	759,8	-25,5	-3,25	-20,5	-2,62
30 to 34 years	1.066,3	-16,3	-1,51	-29,1	-2,66
35 to 39 years	1.296,3	-7,7	-0,59	15,3	1,20
40 to 44 years	1.217,7	-0,7	-0,05	33,4	2,82
45 to 49 years	1.094,0	-27,6	-2,46	4,9	0,45
50 to 54 years	991,5	-10,2	-1,01	44,8	4,73
55 and over	1.157,7	16,1	1,41	83,5	7,77
TOTAL EMPLOYED	17.454,8	-114,3	-0,65	504,2	2,97
Agriculture	717,4	-11,5	-1,58	-91,7	-11,33
Industry	2.441,1	2,3	0,10	142,5	6,20
Construction	1.060,6	30,3	2,94	118,5	12,58
Services	13.235,7	-135,4	-1,01	334,9	2,60

National results

(Continuation)

	Current quarter	Variation on previous quarter		Variation on same quarter, previous year	
		Difference	Percentage	Difference	Percentage
5. Employed by professional status, type of contract, public / private sectors and working hours					
TOTAL EMPLOYED	17.454,8	-114,3	-0,65	504,2	2,97
BY PROFESSIONAL STATUS					
Self-employed workers	3.055,0	-23,0	-0,75	40,7	1,35
- Employers	854,2	-38,7	-4,34	0,3	0,03
- Independent workers	2.081,5	18,6	0,90	44,5	2,18
- Cooperatives members	21,5	-3,2	-12,80	-4,6	-17,49
- Family workers	97,8	0,3	0,28	0,5	0,48
Employees	14.393,9	-89,2	-0,62	464,4	3,33
- With a permanent job	10.997,3	25,3	0,23	289,7	2,71
- With a temporary job	3.396,6	-114,5	-3,26	174,8	5,42
Others	5,9	-2,1	-26,18	-0,9	-13,11
BY PUBLIC / PRIVATE SECTORS					
Employed by public sector	2.956,7	29,2	1,00	36,2	1,24
Employed by private sector	14.498,1	-143,5	-0,98	468,0	3,34
BY WORKING HOURS					
Full-time employed	14.618,2	-130,6	-0,89	413,6	2,91
Males	8.757,5	-70,7	-0,80	322,7	3,83
Females	5.860,7	-59,9	-1,01	90,9	1,58
Part-time employed	2.836,6	16,3	0,58	90,6	3,30
Males	762,7	32,6	4,46	31,9	4,36
Females	2.073,9	-16,3	-0,78	58,7	2,91

*) Private employment are all persons in employment other than public employees. Namely: private employees, employers, independent workers, cooperative members, family workers and other professional status.

6. Unemployed by sex, age group, and economic sector

BOTH SEXES	5.444,6	-13,1	-0,24	-488,7	-8,24
16 to 19 years	170,8	2,6	1,54	1,3	0,76
20 to 24 years	611,3	-34,3	-5,31	-100,7	-14,14
25 to 54 years	4.063,9	33,9	0,84	-385,3	-8,66
55 and over	598,7	-15,3	-2,50	-3,9	-0,65
MALES	2.802,3	-21,4	-0,76	-314,3	-10,08
16 to 19 years	95,0	9,0	10,52	0,5	0,48
20 to 24 years	336,3	-5,1	-1,49	-44,7	-11,72
25 to 54 years	2.024,2	-7,3	-0,36	-267,0	-11,65
55 and over	346,8	-18,1	-4,95	-3,1	-0,89
FEMALES	2.642,4	8,3	0,32	-174,4	-6,19
16 to 19 years	75,8	-6,4	-7,84	0,8	1,12
20 to 24 years	275,0	-29,2	-9,60	-56,0	-16,93
25 to 54 years	2.039,7	41,2	2,06	-118,4	-5,49
55 and over	251,9	2,7	1,09	-0,8	-0,33
TOTAL UNEMPLOYED	5.444,6	-13,1	-0,24	-488,7	-8,24
Agriculture	281,1	9,7	3,56	39,3	16,26
Industry	207,9	-4,2	-1,98	-45,7	-18,01
Construction	221,7	-7,2	-3,15	-84,1	-27,51
Services	1.466,2	35,3	2,47	-165,1	-10,12
Lost their job more than 1 year ago	2.728,6	-25,5	-0,92	-247,2	-8,31
First job seekers	539,1	-21,3	-3,79	14,1	2,69

National results

(Conclusion)

	Current quarter	Variation on previous quarter		Variation on same quarter, previous year	
		Difference	Percentage	Difference	Percentage

7. Unemployment rate by relationship with the reference person

	Current quarter	Difference	Percentage	Difference	Percentage
TOTAL	23,78	0,07	0,31	-2,15	-8,30
Reference person	19,48	0,20	1,06	-2,24	-10,30
Spouse or partner	19,97	0,13	0,63	-1,44	-6,71
Child	41,36	-0,24	-0,57	-2,82	-6,38
Other relatives	34,05	1,53	4,70	-2,23	-6,14
Unrelated persons	20,30	0,63	3,18	-1,50	-6,89

8. Household data

	Current quarter	Difference	Percentage	Difference	Percentage
TOTAL HOUSEHOLDS	18.363,5	1,5	0,01	97,1	0,53
Households with at least one active member	13.413,4	-27,4	-0,20	70,9	0,53
- All member employed	9.091,4	-18,7	-0,21	431,8	4,99
- All member unemployed	1.793,6	27,3	1,55	-185,4	-9,37
Households without any active population	4.950,2	28,9	0,59	26,2	0,53

Mobility according to activity in current and previous quarter

Classification in previous quarter	Classification in current quarter			
	Total	Employed	Unemployed	Inactive
BOTH SEXES				
Total	38.517,2	17.454,8	5.444,6	15.617,8
Employed	17.551,9	16.381,3	743,8	426,8
Unemployed	5.410,3	778,1	3.897,5	734,7
Inactive	15.455,7	294,1	801,9	14.359,7
Not classifiable	99,4	1,2	1,5	96,7
MALES				
Total	18.767,1	9.533,8	2.789,3	6.444,0
Employed	9.570,7	8.953,6	422,7	194,4
Unemployed	2.785,0	451,9	2.054,9	278,3
Inactive	6.357,9	127,9	311,1	5.918,9
Not classifiable	53,4	0,3	0,7	52,5
FEMALES				
Total	19.750,1	7.921,0	2.655,3	9.173,8
Employed	7.981,1	7.427,7	321,1	232,4
Unemployed	2.625,3	326,2	1.842,6	456,4
Inactive	9.097,7	166,2	490,8	8.440,8
Not classifiable	45,9	0,9	0,8	44,2

Grossing up factors of current quarter (forward analysis)

Results by Autonomous Communities and Cities

(Continues)

	Current quarter	Variation on previous quarter		Variation on same quarter, previous year	
		Difference	Percentage	Difference	Percentage
1. Population aged 16 years and over					
TOTAL	38.517,2	-6,2	-0,02	33,6	0,09
Andalucía	6.874,0	3,1	0,05	20,4	0,30
Aragón	1.102,1	-0,9	-0,08	-1,5	-0,14
Asturias, Principado de	915,5	-1,9	-0,21	-8,1	-0,88
Balears, Illes	933,8	0,9	0,10	8,1	0,88
Canarias	1.791,5	3,0	0,17	14,3	0,80
Cantabria	494,5	-0,5	-0,10	-1,8	-0,36
Castilla y León	2.100,2	-3,8	-0,18	-16,1	-0,76
Castilla-La Mancha	1.689,5	-2,0	-0,12	-7,5	-0,44
Cataluña	6.075,2	-1,5	-0,02	-1,1	-0,02
Comunitat Valenciana	4.112,4	-0,2	-0,01	3,5	0,09
Extremadura	912,2	-0,7	-0,07	-3,9	-0,42
Galicia	2.361,6	-2,9	-0,12	-11,7	-0,49
Madrid, Comunidad de	5.249,8	2,2	0,04	29,6	0,57
Murcia, Región de	1.182,8	0,6	0,05	1,1	0,10
Navarra, Comunidad Foral de	521,7	-0,1	-0,02	1,5	0,29
País Vasco	1.814,1	-1,2	-0,06	5,1	0,28
Rioja, La	259,9	-0,3	-0,10	0,2	0,07
Ceuta	64,8	-0,1	-0,13	0,4	0,63
Melilla	61,7	-0,1	-0,08	1,0	1,72

2. Active population

TOTAL	22.899,4	-127,4	-0,55	15,5	0,07
Andalucía	4.042,9	-34,7	-0,85	26,8	0,67
Aragón	644,3	-2,9	-0,45	-5,0	-0,77
Asturias, Principado de	458,9	-14,8	-3,12	-21,5	-4,47
Balears, Illes	586,6	-3,3	-0,56	15,6	2,74
Canarias	1.115,0	14,1	1,29	21,4	1,96
Cantabria	277,9	-0,1	-0,05	-0,8	-0,27
Castilla y León	1.147,0	-8,3	-0,72	-11,9	-1,02
Castilla-La Mancha	991,5	-2,0	-0,20	-20,4	-2,02
Cataluña	3.781,3	-23,3	-0,61	-19,6	-0,52
Comunitat Valenciana	2.425,1	0,3	0,01	-10,7	-0,44
Extremadura	501,8	-4,9	-0,96	1,9	0,38
Galicia	1.263,2	-1,1	-0,08	-16,5	-1,29
Madrid, Comunidad de	3.389,4	-12,0	-0,35	76,4	2,30
Murcia, Región de	700,3	-21,9	-3,03	-23,1	-3,20
Navarra, Comunidad Foral de	306,1	-4,6	-1,48	-8,0	-2,54
País Vasco	1.041,5	-7,1	-0,68	11,0	1,07
Rioja, La	153,9	0,0	-0,02	-2,0	-1,27
Ceuta	37,0	-2,5	-6,29	0,1	0,23
Melilla	35,9	1,5	4,33	1,7	5,09

* Data below 5000 are subject to strong variations, due to sampling error

Results by Autonomous Communities and Cities (Conclusion)

	Current quarter	Variation on previous quarter		Variation on same quarter, previous year	
		Difference	Percentage	Difference	Percentage
3. Employed					
TOTAL	17.454,8	-114,3	-0,65	504,2	2,97
Andalucía	2.683,7	1,9	0,07	71,1	2,72
Aragón	524,5	-1,9	-0,37	23,6	4,71
Asturias, Principado de	371,8	-3,5	-0,93	0,7	0,18
Baleares, Illes	455,9	-22,7	-4,74	37,3	8,92
Canarias	771,5	12,8	1,69	33,9	4,59
Cantabria	226,3	-0,4	-0,20	6,1	2,77
Castilla y León	913,3	-7,7	-0,83	11,8	1,31
Castilla-La Mancha	707,0	-3,3	-0,47	1,7	0,24
Cataluña	3.023,2	-24,8	-0,82	62,5	2,11
Comunitat Valenciana	1.836,3	-19,0	-1,03	83,7	4,77
Extremadura	350,1	-4,8	-1,35	10,8	3,19
Galicia	987,5	-12,9	-1,29	4,7	0,48
Madrid, Comunidad de	2.786,6	-2,4	-0,09	150,5	5,71
Murcia, Región de	513,4	-11,9	-2,27	-9,5	-1,82
Navarra, Comunidad Foral de	258,2	-6,2	-2,34	-2,2	-0,83
País Vasco	870,3	-4,2	-0,48	18,7	2,20
Rioja, La	126,9	-0,7	-0,51	1,5	1,19
Ceuta	25,2	-1,4	-5,33	0,0	-0,07
Melilla	23,2	-1,1	-4,38	-2,6	-10,17

4. Unemployed

TOTAL	5.444,6	-13,1	-0,24	-488,7	-8,24
Andalucía	1.359,1	-36,6	-2,62	-44,2	-3,15
Aragón	119,7	-1,0	-0,81	-28,6	-19,28
Asturias, Principado de	87,2	-11,3	-11,46	-22,1	-20,26
Baleares, Illes	130,7	19,4	17,38	-21,7	-14,25
Canarias	343,5	1,4	0,40	-12,4	-3,49
Cantabria	51,5	0,3	0,59	-6,9	-11,74
Castilla y León	233,7	-0,6	-0,26	-23,6	-9,19
Castilla-La Mancha	284,5	1,3	0,47	-22,1	-7,22
Cataluña	758,0	1,5	0,20	-82,1	-9,78
Comunitat Valenciana	588,8	19,4	3,40	-94,3	-13,81
Extremadura	151,7	-0,1	-0,05	-8,9	-5,57
Galicia	275,7	11,9	4,50	-21,2	-7,15
Madrid, Comunidad de	602,8	-9,5	-1,56	-74,1	-10,95
Murcia, Región de	186,9	-10,0	-5,06	-13,6	-6,77
Navarra, Comunidad Foral de	47,9	1,6	3,43	-5,8	-10,83
País Vasco	171,2	-2,9	-1,67	-7,7	-4,31
Rioja, La	27,1	0,6	2,34	-3,5	-11,38
Ceuta	11,7	-1,1	-8,31	0,1	(:)
Melilla	12,7	2,6	25,13	4,4	(:)

* Data below 5,000 are subject to strong variations, due to sampling error

(:) The variation percentages calculated from low figures with high sampling errors are not significant

Results by Autonomous Communities and Cities

(Absolute figures in thousands and rates in percentage)

5. Employed and unemployed by sex. Activity and unemployment rates

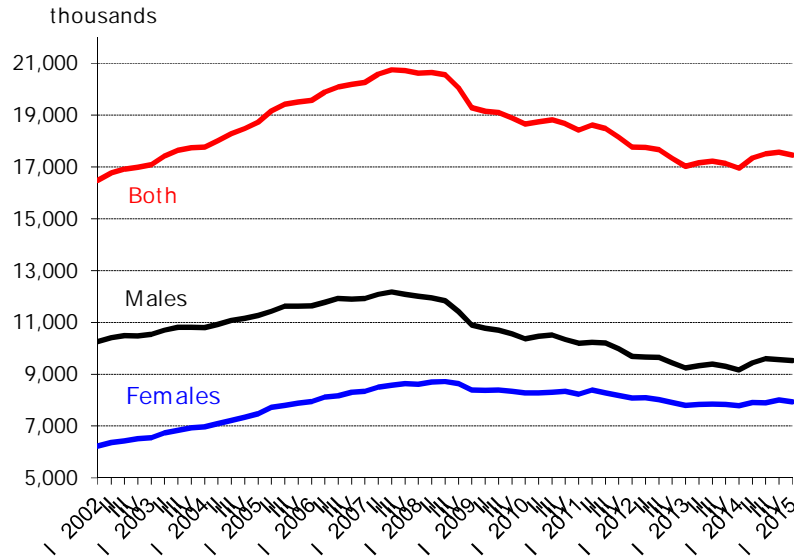
	Both sexes				Males				Females			
	Employed	Unemployed	Activity rate	Unem. rate	Employed	Unemployed	Activity rate	Unem. Rate	Employed	Unemployed	Activity rate	Unem. Rate
TOTAL	17.454,8	5.444,6	59,45	23,78	9.520,2	2.802,3	65,66	22,74	7.934,6	2.642,4	53,55	24,98
Andalucía	2.683,7	1.359,1	58,81	33,62	1.527,5	682,8	65,64	30,89	1.156,2	676,4	52,26	36,91
Aragón	524,5	119,7	58,46	18,59	297,8	54,6	64,84	15,50	226,8	65,1	52,26	22,31
Asturias, Principado de	371,8	87,2	50,13	18,99	195,4	44,1	55,11	18,41	176,4	43,1	45,62	19,63
Balears, Illes	455,9	130,7	62,82	22,29	247,9	68,5	68,35	21,65	208,0	62,2	57,37	23,03
Canarias	771,5	343,5	62,24	30,81	422,2	181,5	68,24	30,07	349,2	162,0	56,38	31,69
Cantabria	226,3	51,5	56,19	18,54	125,0	24,6	62,34	16,46	101,3	26,9	50,39	20,96
Castilla y León	913,3	233,7	54,62	20,38	517,6	115,7	61,17	18,27	395,7	118,1	48,24	22,98
Castilla-La Mancha	707,0	284,5	58,68	28,69	416,8	144,4	66,20	25,73	290,2	140,1	51,11	32,56
Cataluña	3.023,2	758,0	62,24	20,05	1.603,5	398,5	67,82	19,90	1.419,7	359,5	56,97	20,21
Comunitat Valenciana	1.836,3	588,8	58,97	24,28	1.003,6	311,6	65,20	23,69	832,8	277,2	52,98	24,97
Extremadura	350,1	151,7	55,01	30,24	208,4	74,2	62,59	26,26	141,6	77,5	47,58	35,36
Galicia	987,5	275,7	53,49	21,83	522,3	142,9	58,84	21,48	465,2	132,8	48,58	22,21
Madrid, Comunidad de	2.786,6	602,8	64,56	17,79	1.432,1	319,6	70,38	18,25	1.354,5	283,2	59,32	17,29
Murcia, Región de	513,4	186,9	59,20	26,69	299,2	98,0	67,44	24,67	214,1	88,9	51,03	29,34
Navarra, Comunidad	258,2	47,9	58,68	15,66	142,9	24,1	64,81	14,43	115,2	23,8	52,69	17,15
País Vasco	870,3	171,2	57,41	16,43	455,3	93,2	62,85	17,00	415,0	77,9	52,36	15,81
Rioja, La	126,9	27,1	59,24	17,58	71,6	12,3	65,70	14,67	55,2	14,7	52,99	21,06
Ceuta	25,2	11,7	57,07	31,76	16,6	5,6	67,35	25,41	8,6	6,1	46,38	41,36
Melilla	23,2	12,7	58,11	35,40	14,4	5,9	66,26	29,03	8,8	6,8	50,07	43,71

* Data below 5,000 are subject to strong variations, due to sampling errors

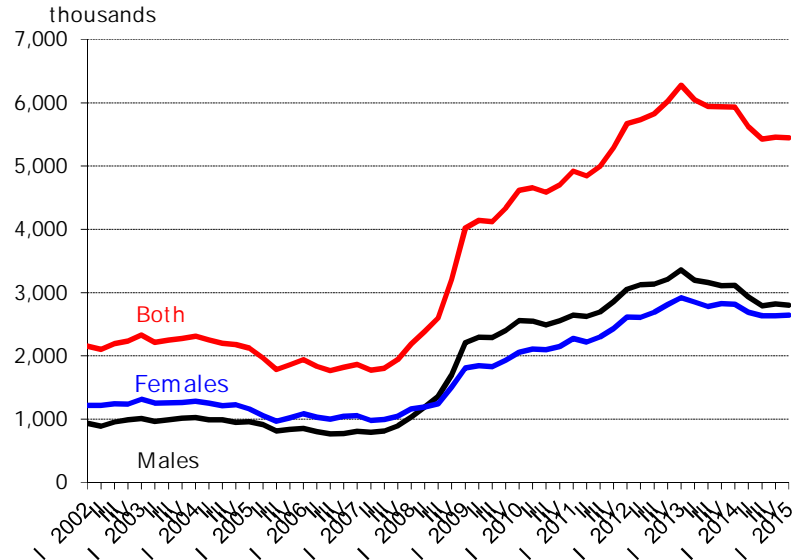
Employed and unemployed by sex

APS First Quarter 2015

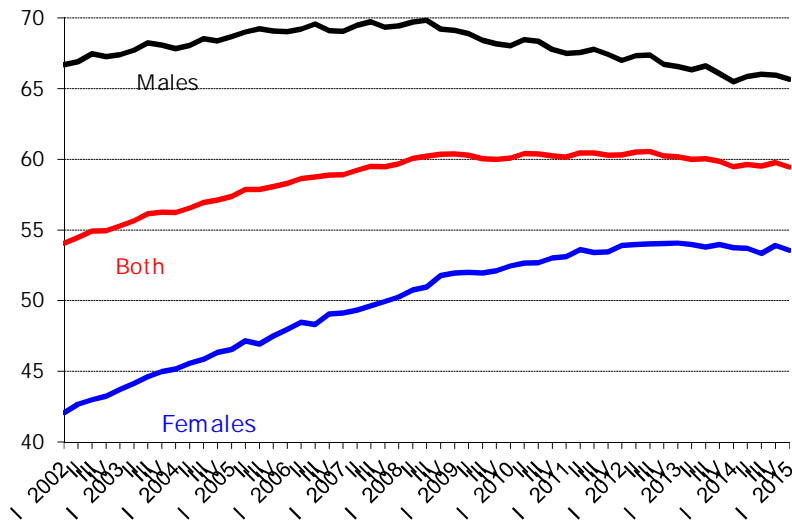
Employment



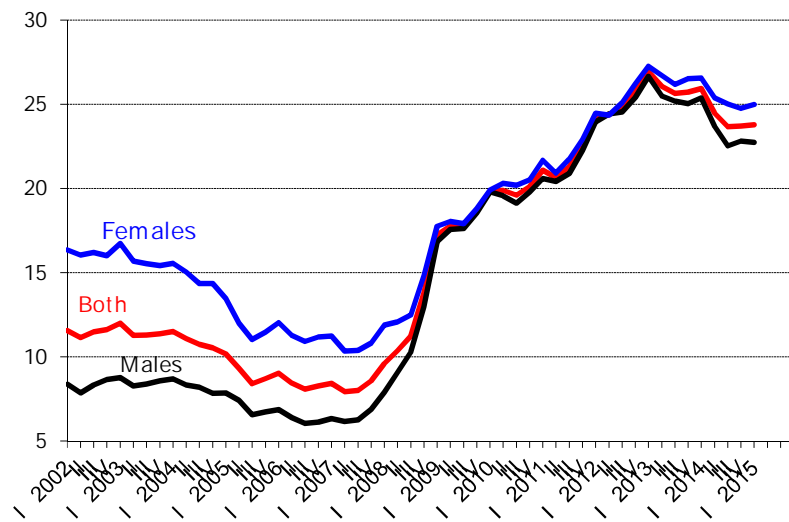
Unemployment



Activity rate



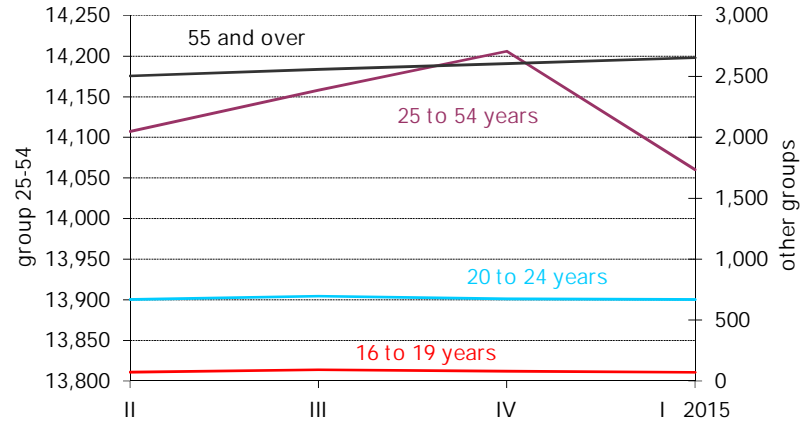
Unemployment rate



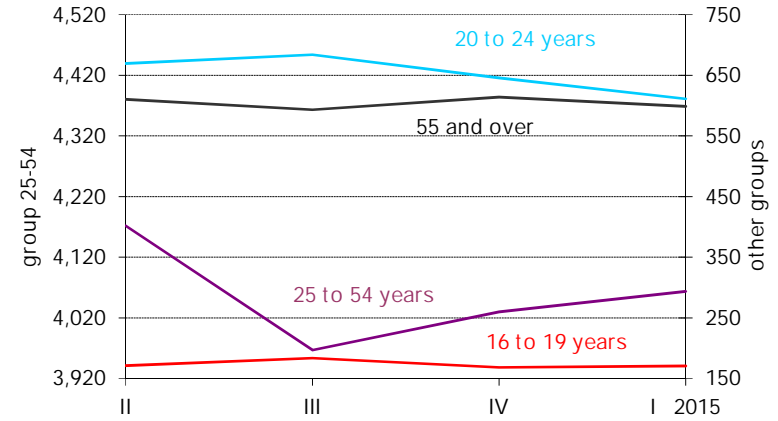
Employed and Unemployed by age

APS First Quarter 2015

Employment (thousands)

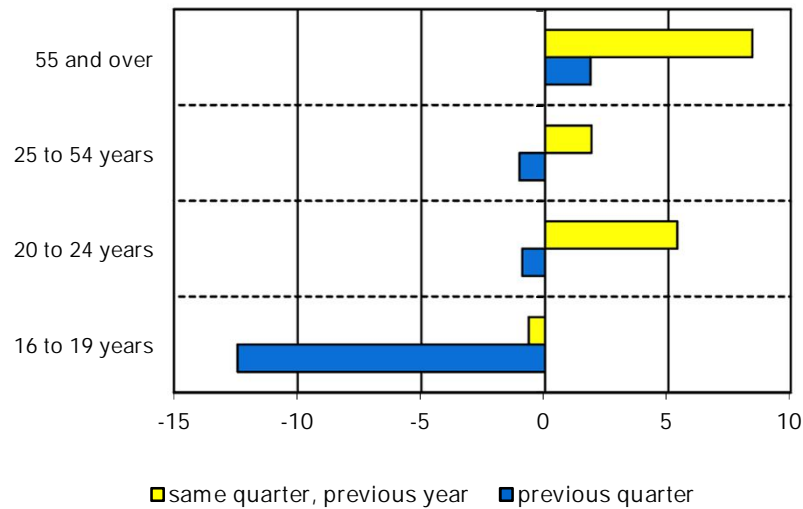


Unemployment (thousands)

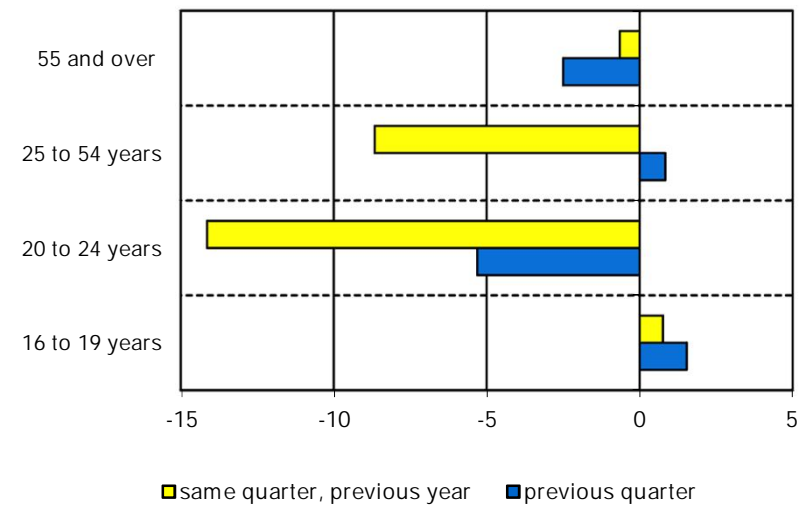


Variation percentages over the previous quarter and over the same quarter of the previous year

Employment

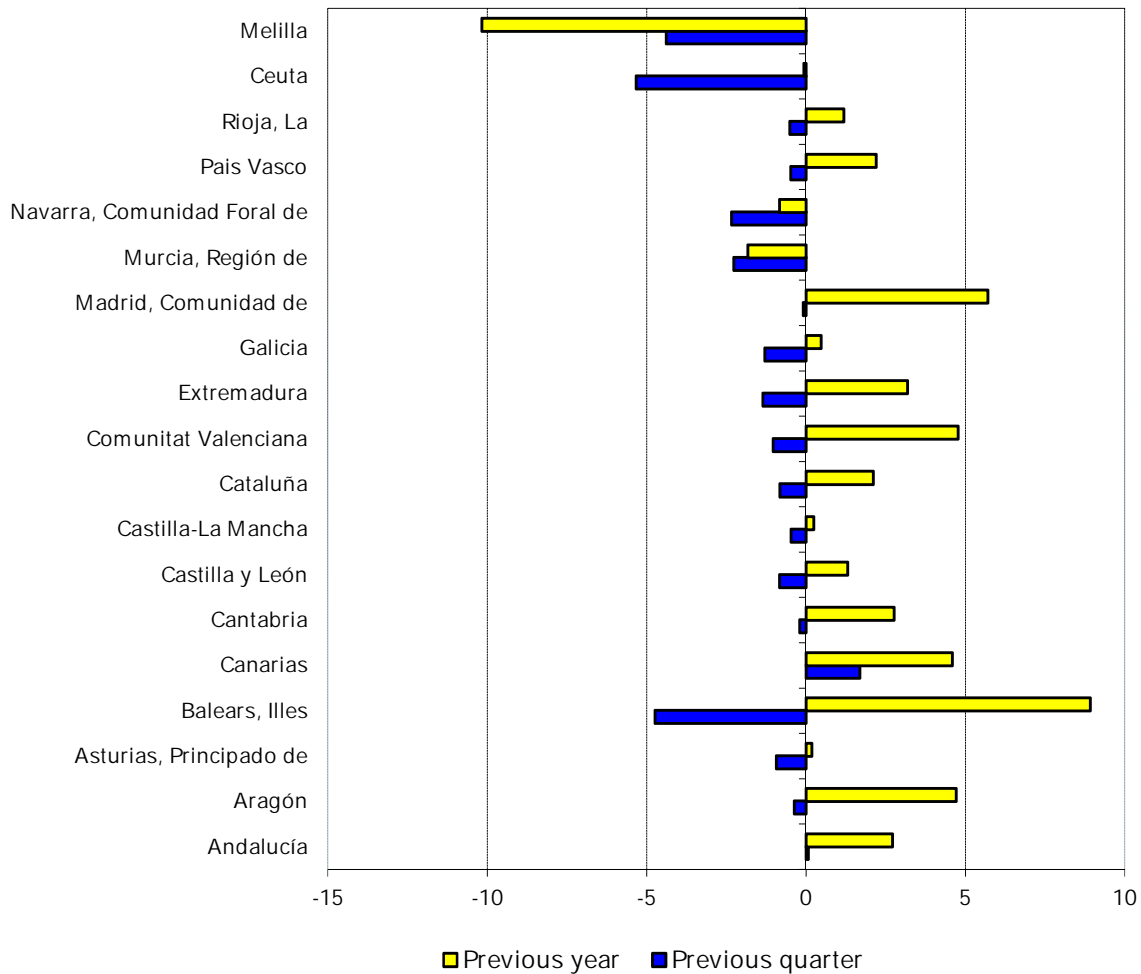


Unemployment



Employment variation percentages over the previous quarter and over the same quarter of the previous year

First Quarter 2015



Unemployment rate (Spain = 23.78)

