

27 April 2023

The Economically Active Population Survey (EAPS) and the Statistics on Economically Active Population Flows (SEAPF) First Quarter 2023

Main results

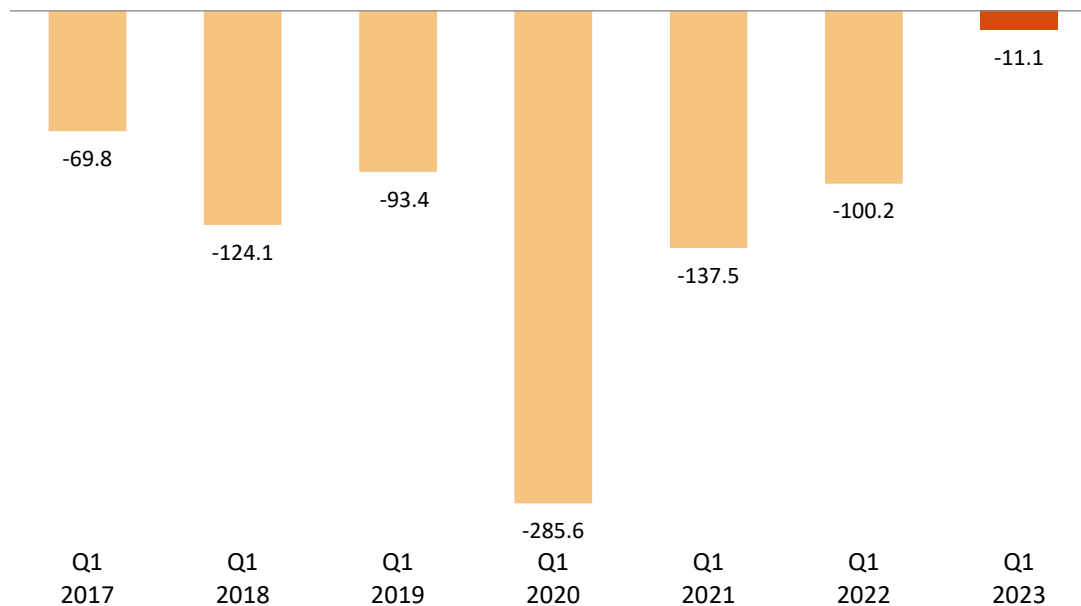
- The number of employed persons decreased by 11,100 persons in the first quarter of 2023 as compared with the previous quarter (-0.05%), standing at 20,452,800 employed persons. In seasonally adjusted terms, the quarterly variation was 1.16%. Employment has grown by 368,000 persons (1.83%) in the last 12 months.
- This quarter, employment fell by 8,800 people in the private sector and 2,300 in the public sector. In the last twelve months, employment has increased by 312,300 persons in the private sector and 55,700 in the public sector.
- Salaried employees decreased this quarter by 23,200. The number of wage-earners with a permanent contract has increased by 93,800 persons, while that of wage-earners with temporary contracts has decreased by 117,000 persons. The number of salaried employees increased by 419,800 in the annual rate (permanent employment increased by 1,520,800 persons and temporary employment fell by 1,101,000). The number of self-employed workers increased by 12,100 this quarter and decreased by 43,400 in the last 12 months.
- Employment increased this quarter in *Services* (7,800 more employed persons) while it fell in *Industry* (11,200 less), in *Agriculture* (-5,000) and in *Construction* (-2,700). In the last year employment rose in *Services* (372,200 more) and in *Industry* (93,500) while it decreased in *Agriculture* (-79,500) and *Construction* (-18,200).
- The greatest increases in employment this quarter were in Andalucía (66,300 more), Comunidad de Madrid (31,400) and Aragón (7,300). The greatest decreases were observed in Illes Balears (-38,600 fewer), Castilla y León (-21,400) and Canarias (-13,600). In the past year, employment increased in almost all communities. Andalucía (109,700 more), Cataluña (64,000) and Canarias (55,900) presented the highest increases.
- The number of unemployed persons increased by 103,800 this quarter (3.43%), standing at 3,127,800. In seasonally adjusted terms, the quarterly variation was -0.03%. Over the last 12 months, unemployment has decreased by 47,000 persons (-1.48%). The unemployment rate stood at 13.26%, which is 39 hundredths more than the previous quarter. Within the last year, this rate has decreased by 38 hundredths.
- By Autonomous Community, the greatest quarterly drops in unemployment occurred in Andalucía (-19,100), Comunidad de Madrid (-16,200) and Principado de Asturias (-6,700). The greatest increases were registered in Illes Balears (48,000 more unemployed persons), Canarias (33,500) and Cataluña (20,000). In annual terms, the greatest decreases in the number of unemployed persons occurred in Canarias (32,100 fewer), Andalucía (-30,000) and Comunidad de Madrid (-27,000). The greatest decreases took place in Comunitat Valenciana (34,600), Cataluña (13,000) and Castilla-La Mancha (10,300).
- This quarter, the number of economically active persons increased by 92,700, up to 23,580,500. The activity rate increased by three hundredths, standing at 58.55%. Over the last year, the economically active population has increased by 321,100 persons.

Employment

The number of employed persons decreased by 11,100 persons in the first quarter of 2023, standing at 20,452,800. The quarterly employment variation rate stood at -0.05%.

The employment rate (percentage of employed persons in relation to the population aged 16 and over) stood at 50.78%, representing a decrease of 20 hundredths as compared to the previous quarter. In annual variation, the rate rose by 27 hundredths.

Quarterly variation of employment. Thousands. (Q1 compared with Q4 of last year)



By sex, employment decreased this quarter by 52,800 men, while it rose by 41,700 women. By nationality, employment fell by 37,900 persons among Spaniards¹, while it grew by 26,800 persons among foreign nationals.

By age, employment grew this quarter among those 50 and over and in the 25 to 34 age group range. The largest increase (40,500 more employed) is among people aged 55 and older. In contrast, employment decreased among those under 25 years of age (with 16,000 less, from 16 to 19 years of age) and among those from 35 to 49 (with a decrease of 55,600 employed persons from 40 to 44 years of age).

In the past 12 months, employment has increased by 368,000 persons (133,600 men and 234,400 women). The annual variation rate of employment was 1.83%, representing an increase of 45 hundredths compared to the previous quarter.

¹ Includes dual nationality

Annual variation rate of employment. Percentage.



Employment increased this quarter in *Services* (7,800 more persons) while it fell in *Industry* (11,200 less), in *Agriculture* (-5,000) and in *Construction* (-2,700).

In the last year, employment grew in *Services* (372,200 more people employed) and in *Industry* (93,500). It decreased in *Agriculture* (-79,500 fewer occupied persons) and in *Construction* (-18,200 fewer).

Full-time employment decreased by 34,700 persons this quarter, whilst part-time employment increased by 23,600. The percentage of persons employed part-time increased by 12 hundredths, up to 13.72%.

Over the last 12 months, full-time employment has increased by 372,000 persons, while part-time employment fell by 4,000.

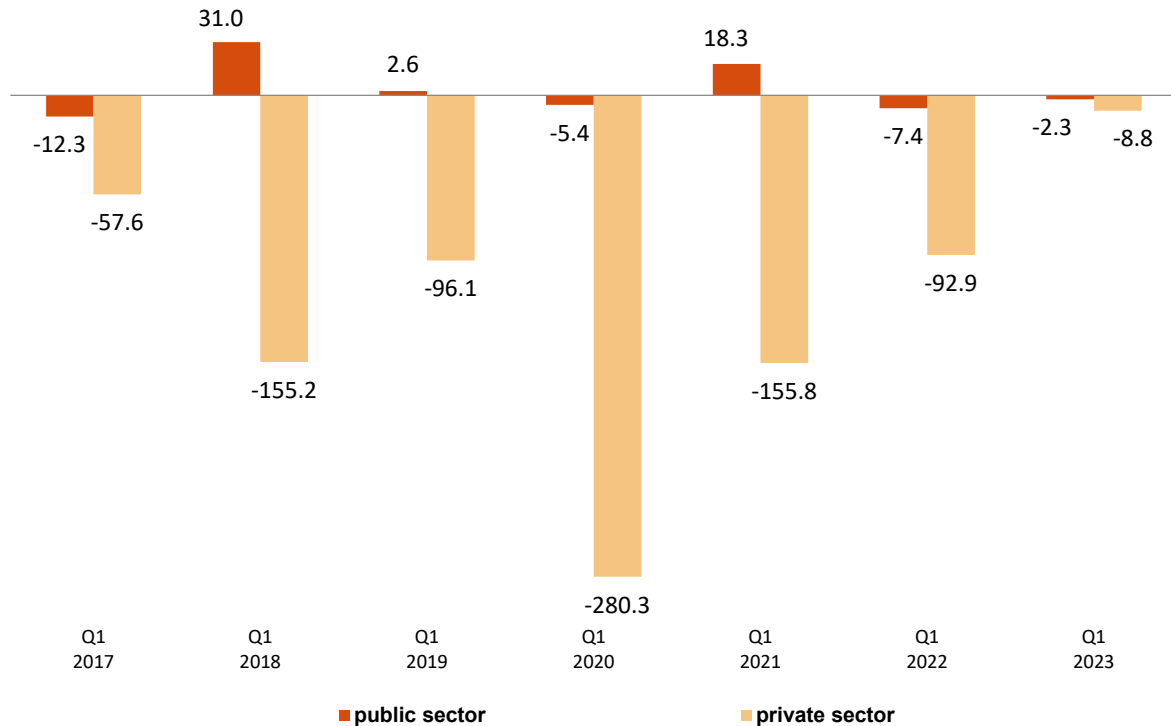
This quarter, the number of salaried employees decreased by 23,200. The number of wage-earners with a permanent contract has increased by 93,800 persons, while that of wage-earners with temporary contracts has decreased by 117,000 persons. The temporary employment rate decreased 0.65 hundredths, reaching 17.28%.

Over the last 12 months, the number of salaried employees has increased by 419,800. Permanent employment has increased by 1,520,800, while temporary employment decreased by 1,101,000.

The number of self-employed persons increased by 12,100 persons in quarterly variation, and decreased by 43,400 over the past year.

This quarter, private employment² decreased by 8,800 persons, standing at 16,928,900. Public employment³ decreased by 2,300 to 3,523,900.

Quarterly variation of employment by nature of employer. Thousands.
(Q1 compared with Q4 of last year)

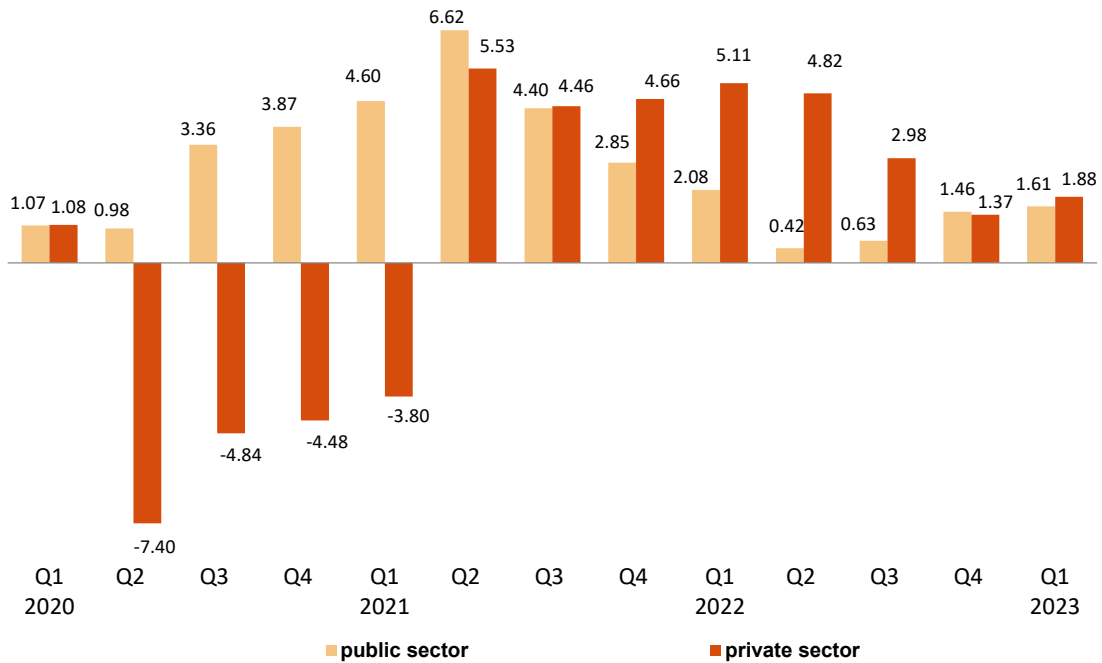


Employment in the private sector showed an annual variation of 1.88%, while public employment of 1.61%. In the past twelve months, employment has increased by 312,300 persons in the private sector and by 55,700 in the public sector.

² Employment in the private sector includes: wage-earners from the private sector, employers, independent workers and businesspersons without wage earners, members of a cooperative, family assistance and other professional situations.

³ Public sector employment includes all wage earners in public enterprises and in the National and Regional Administrations, including both workers contributing to Social Security and those affiliated with the Special Civil Service System.

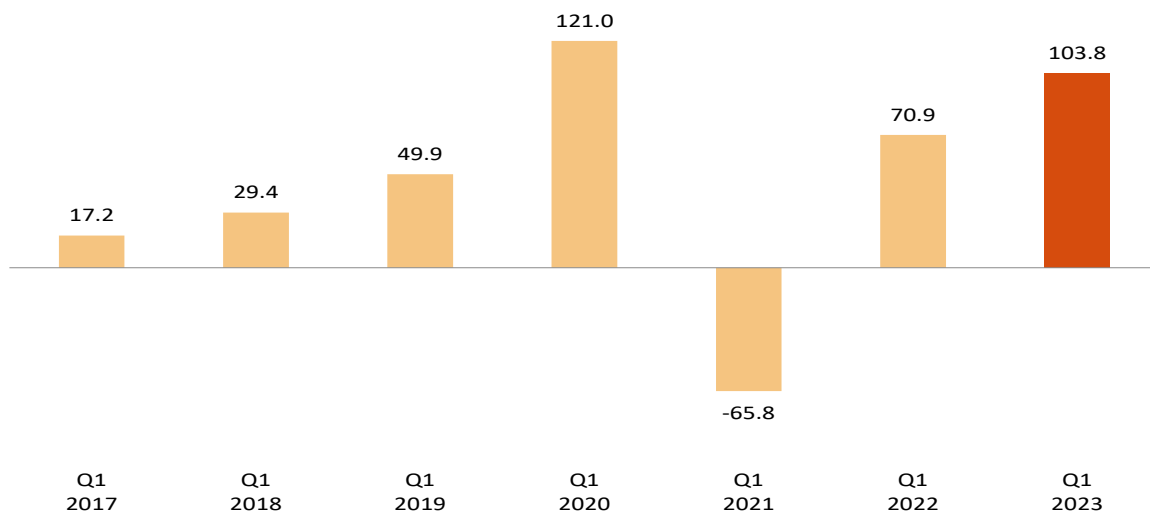
Annual variation rate of employment by nature of employer. Percentage



Unemployment and unemployment rate

Unemployment increased by 103,800 persons this quarter. The total number of unemployed persons stood at 3,127,800. In relative terms, the quarterly variation of unemployment was 3.43%.

Quarterly variation of employment. Thousands.
(Q1 compared with Q4 of last year)



The unemployment rate increased 39 hundredths this quarter to stand at 13.26%. In the last 12 months, this rate has decreased by 38 hundredths.

By sex, the number of unemployed men increased by 28,400 this quarter, standing at 1,429,400. Among women, unemployment increased by 75,400, reaching 1,698,400.

The female unemployment rate increased by 52 hundredths and stood at 15.13%. The male unemployment rate increased by 25 hundredths and stood at 11.57%.

By age groups, an increase in unemployment is observed this quarter in all age groups, in particular among those 25 to 54 years of age (52,400 more unemployed).

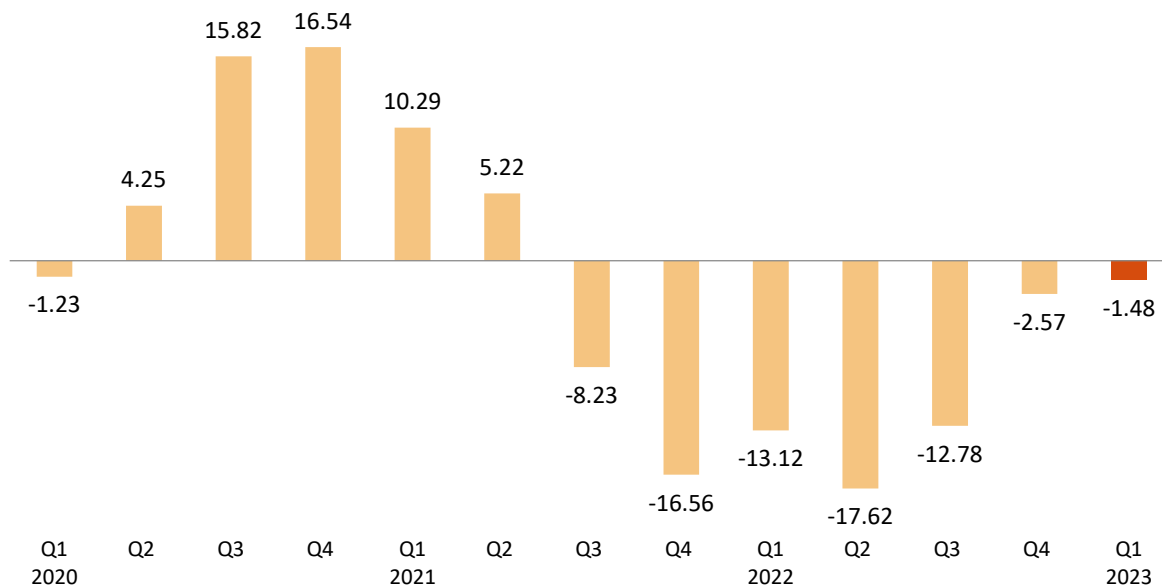
By nationality, unemployment increased this quarter among Spaniards⁴ by 45,200 and among foreigners by 58,600. The unemployment rate of the Spanish population was 12.15%, while that of the foreign population was 19.90%.

This quarter, unemployment increased in *Services* (147,700 more unemployed), in *Construction* (18,600) and in *Industry* (12,400). In turn, it decreased in *Agriculture* (8,600 less).

Unemployment decreased by 58,300 persons among those who lost their job over a year ago and by 8,000 among those who are seeking their first job.

The evolution of unemployment in the annual variation was -1.48%. The total number of unemployed persons has decreased by 47,000 persons in one year, with a decrease of 47,900 for men and an increase of 900 for women.

Annual variation rate of unemployment. Percentage.



⁴ Includes dual nationality.

By age, the most pronounced variations in the number of unemployed persons in the last 12 months occurred in the group from 25 to 54 years old —with 64,400 fewer unemployed— and in the group from 20 to 24 years old, with an increase of 17,100.

By sectors, in the last year unemployment decreased in *Agriculture* (17,800 fewer unemployed) and increased in *Services* (152,500), in *Construction* (17,600) and in *Industry* (3,800). On the other hand, the number of unemployed persons who lost their jobs over a year ago decreased by 198,500 and that of unemployed persons looking for their first job by 4,700.

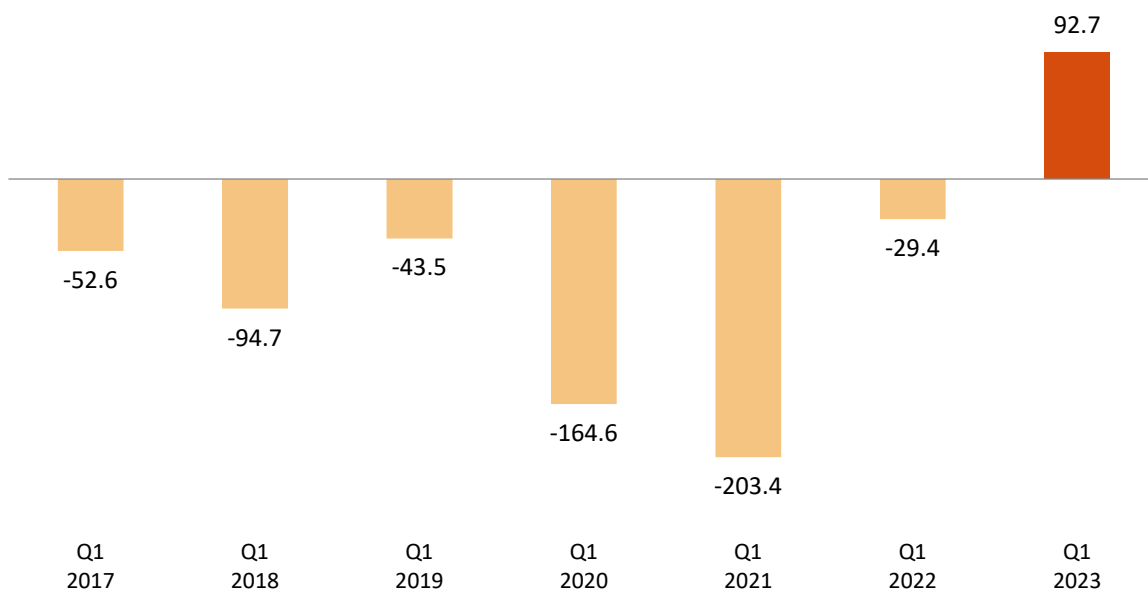
Economically active population and activity rate

The economically active population increased by 92,700 in the first quarter, standing at 23,580,500. The number of economically active women increased by 117,000, while that of men decreased by 24,300.

By nationality, the number of economically active persons increased in this quarter by 7,300 among Spaniards⁵ and 85,400 among foreign nationals.

The economic activity rate increased three hundredths, reaching 58.55%. For men, the rate dropped by 36 hundredths standing at 63.18%. For women, it rose by 39 hundredths to 54.18%.

Quarterly variation of activity. Thousands.
(Q1 compared with Q4 of last year)



The activity rate of Spaniards¹ decreased 24 hundredths as compared with the previous quarter, standing at 57.07%. Foreign national activity increased by 21 hundredths, up to 69.27%. The difference of something more than 12 points between both activity rates is mainly explained by the different age structures for both populations.

In annual terms, the economically active population has increased by 321,100 persons. The annual variation rate of economically active persons was 1.38%.

⁵ Includes dual nationality.

Annual variation rate of activity. Percentage.



Households

The number of households increased by 80,100 this quarter, standing at 19,280,900. Of these, 5,386,700 were single-person households.

Households in which all economically active members were unemployed increased by 7,800 this quarter, up to a total of 1,055,300. Of these, 322,000 were single-person households.

On the other hand, the number of households in which all of the economically active members were employed decreased by 43,300, standing at 11,212,100. Of these, 2,364,100 were single-person households.

In annual comparison, the number of households with at least one economically active member in which those members were unemployed has increased by 2,500, while those where all active members were employed rose by 162,400.

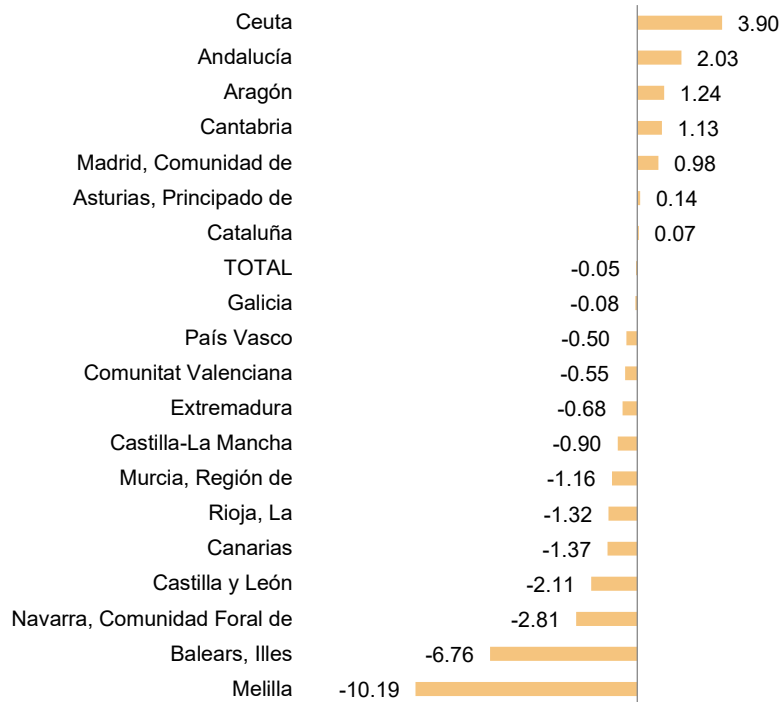
Results by Autonomous Communities⁶

The greatest increases in employment this quarter were in Andalucía (66,300 more), Comunidad de Madrid (31,400) and Aragón (7,300). In turn, the greatest decreases were observed in Illes Balears (-38,600 fewer), Castilla y León (-21,400) and Canarias (-13,600).

In relative terms, the Autonomous Communities with the greatest annual increase in employment were Andalucía (2.03%), Aragón (1.24%) and Cantabria (1.13%).

⁶ As with the rest of the EAPS data, employment results in this section are presented according to the Autonomous Community where the persons interviewed in the survey reside, and not according to where their workplace is.

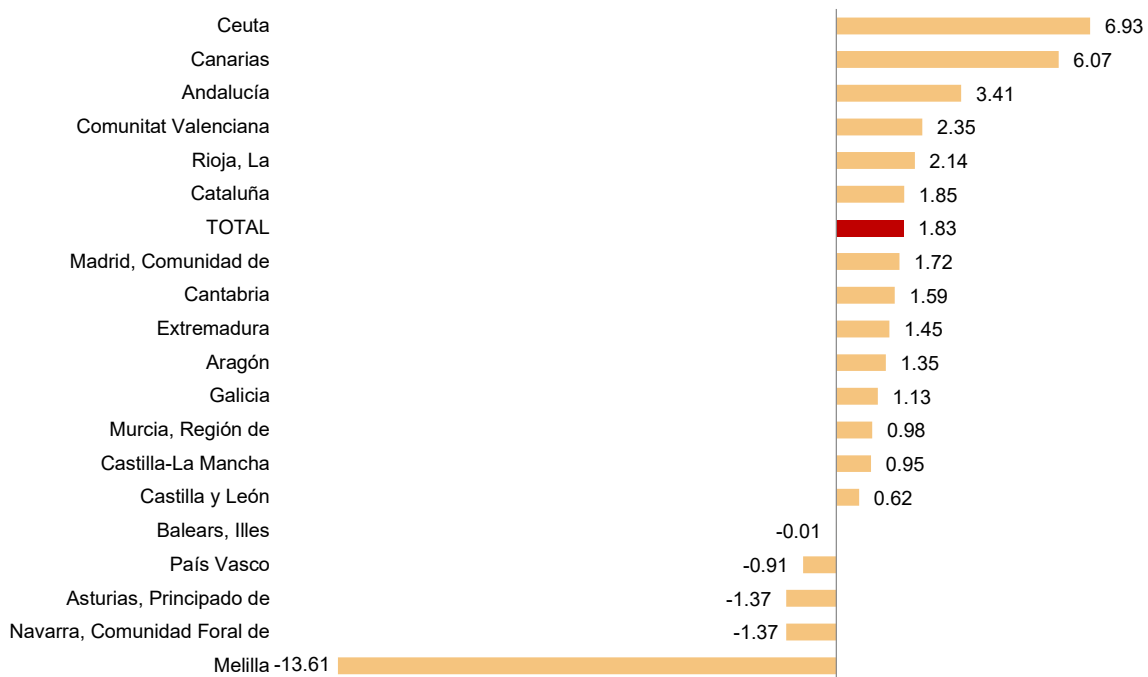
Quarterly variation rate of employment by autonomous community. Percentage



In the last year, employment increased in the majority of communities. The greatest increases took place in Andalucía (109,700 more), Cataluña (64,000) and Canarias (55,900). In turn, employment decreased in País Vasco (-8,700), Principado de Asturias (-5,300) and Comunidad Foral de Navarra (-4,000).

In relative terms, the Autonomous Communities with the greatest annual employment variations were Canarias (6.07%), Andalucía (3.41%) and Comunitat Valenciana (2.35%). This while Principado de Asturias, Comunidad Foral de Navarra (both with -1.37%) and País Vasco (-0.91%) presented negative rates.

Annual variation rate of employment by autonomous community. Percentage



The largest quarterly unemployment declines took place in Andalucía (-19,100), Comunidad de Madrid (-16,200) and Canarias (-6,700). On the other hand, the greatest increases occurred in Illes Balears (48,000 more), Canarias (33,500) and Cataluña (20,000).

In annual terms, the greatest decreases in the number of unemployed persons occurred in Canarias (-32,100), Andalucía (-30,000) and Comunidad de Madrid (-27,000). On the other hand, the largest increases in unemployment in the last 12 months were observed in Comunitat Valenciana (34,600 more unemployed persons), Cataluña (13,000) and Castilla-La Mancha (10,300).

País Vasco (8.44%), Aragón (8.94%) and Cantabria (9.29%) recorded the lowest unemployment rates this quarter. At the other extreme, Extremadura (19.53%), Andalucía (18.31%) and Illes Balears (18.14%) showed the highest rates.

This quarter, the greatest increases in economic activity were registered in Andalucía (47,200 more economically active individuals), Cataluña (22,300) and Canarias (19,900). The greatest decreases were observed in País Vasco (7,600 fewer economically active people), Comunitat Valenciana (-6,900) and Principado de Asturias (-6,200).

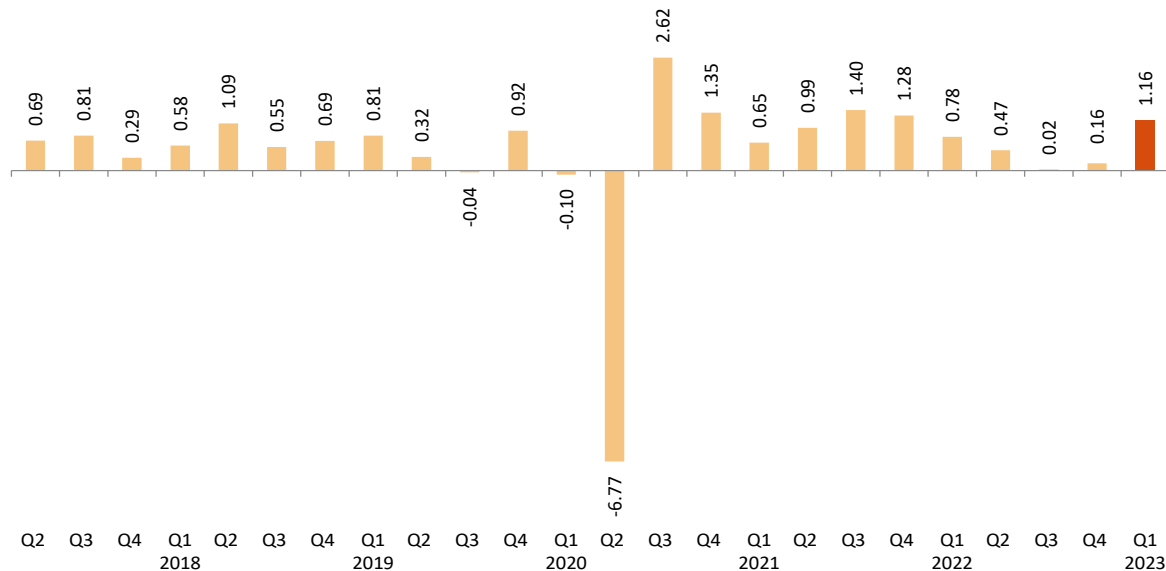
In the last 12 months, Comunitat Valenciana (85,200 more economically active persons), Andalucía (79,600) and Cataluña (77,000) registered the greatest increases in the number of economically active persons. In turn, the greatest decreases occurred in País Vasco (12,300), Castilla y León (-3,100), and Principado de Asturias (-500).

This quarter, the activity rates fluctuated between 63.29% for Comunidad de Madrid and 49.71% for Principado de Asturias.

Seasonally adjusted series

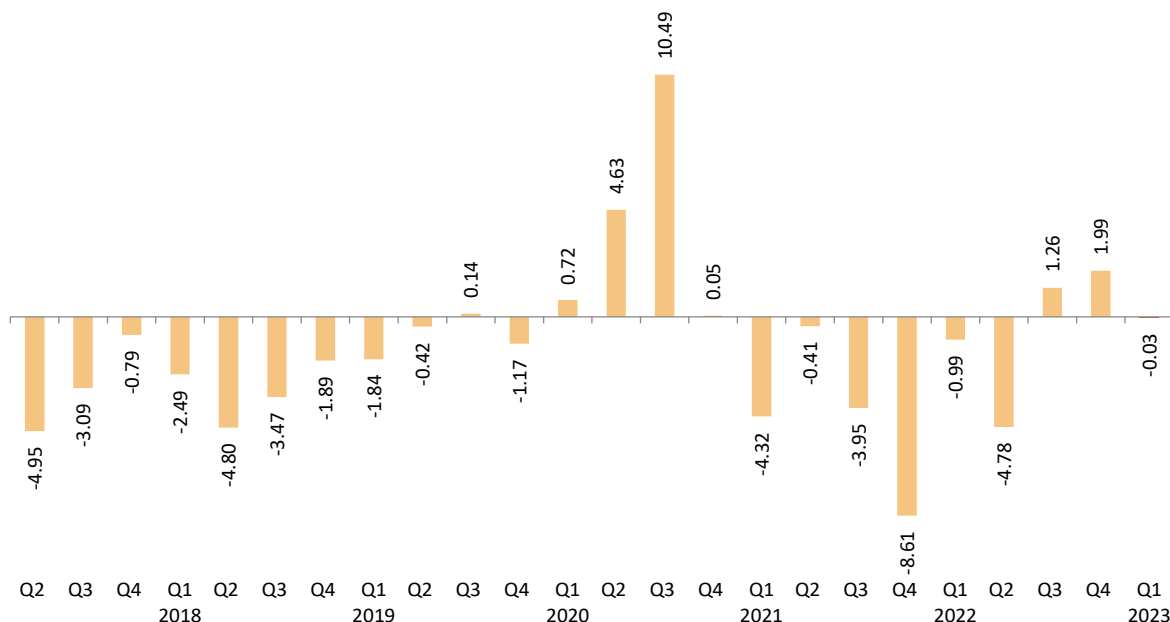
In the first quarter of 2023, the quarterly variation rate of employment adjusted for seasonal effects was 1.16%.

Quarterly variation rate of seasonally adjusted employment. Percentage



As regards seasonally-adjusted unemployment results, there was a decrease of 0.03%.

Quarterly variation rate of seasonally adjusted unemployment. Percentage



As explained in the methodology used for seasonal adjustment, the seasonal adjustment model is maintained for a year, with the first quarters corresponding to the time of the model's re-identification, but the coefficients are recalculated quarterly, so that each quarter the previous results are reviewed (either by re-identification or by revision of coefficients) and therefore the latest series available must always be consulted.

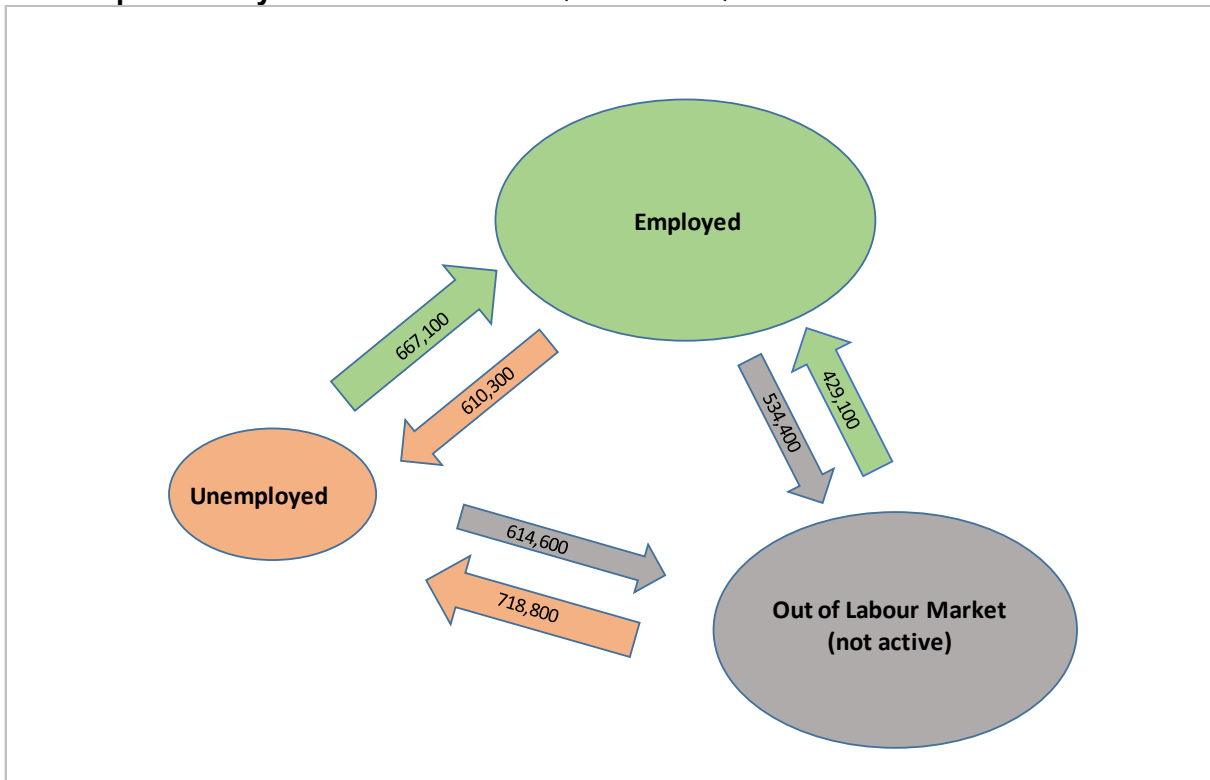
The series of the quarterly variation rates of the seasonally adjusted results of employment and unemployment since 2005 and the description of the method used can be found in:

http://www.ine.es/daco/daco42/daco4211/epa_desestacional.xlsx

Flows in absolute values with respect to the previous quarter⁷

In this quarter, the decrease in the flow towards inactivity from the previous quarter should be noted. There was also a decrease in the number of unemployed persons being incorporated into jobs in the previous quarter.

Flow of persons by labour status from Q4-2022 to Q1-2023

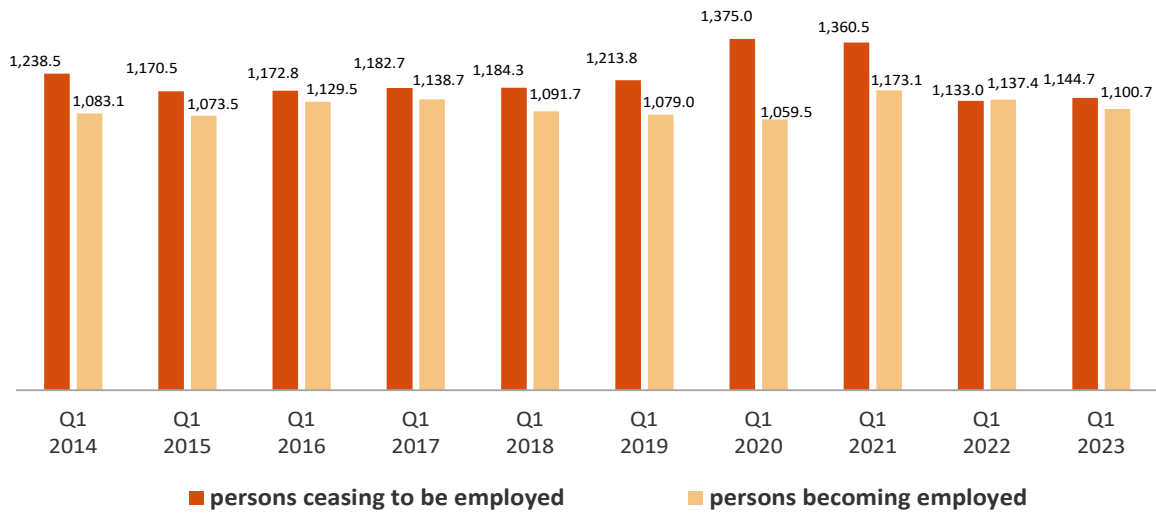


The total inflow to employment in the first quarter of 2023 was 1,100,700 people, a figure 35,700 lower than that registered in the same quarter of the previous year.

However, the outflow from employment was 1,144,700 people, which is 11,700 more than in the same quarter of 2022.

⁷ This section compiles the results of the Economically Active Population Flow Statistics. Due to the methodology used in preparation, the results might not match the net balances of quarterly EAPS. The differences are caused by the “no data recorded” groups (persons turning 16 years old in the change between one quarter and the next and those who did not live in Spain in the previous quarter).

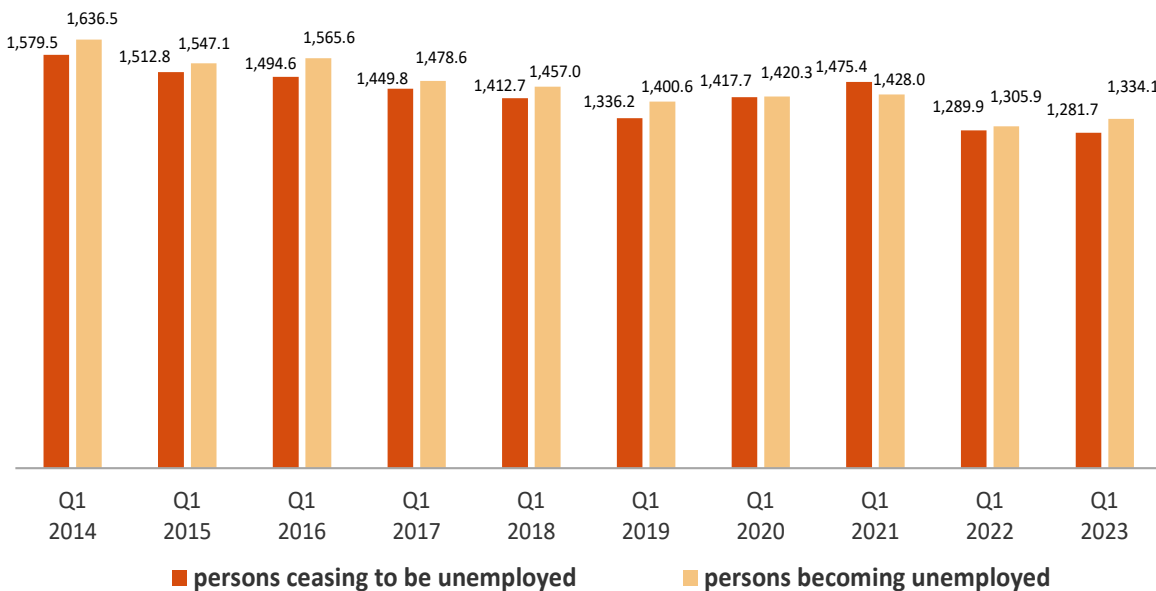
Flows of persons becoming and ceasing to be employed each quarter. Thousands.



The number of persons who were unemployed three months ago but are not currently unemployed stood at 1,281,700, which is 8,200 fewer persons than in the same period in 2022.

However, the total inflow to unemployment reached 1,334,100 people, which is 28,200 more persons than in the same quarter of 2022.

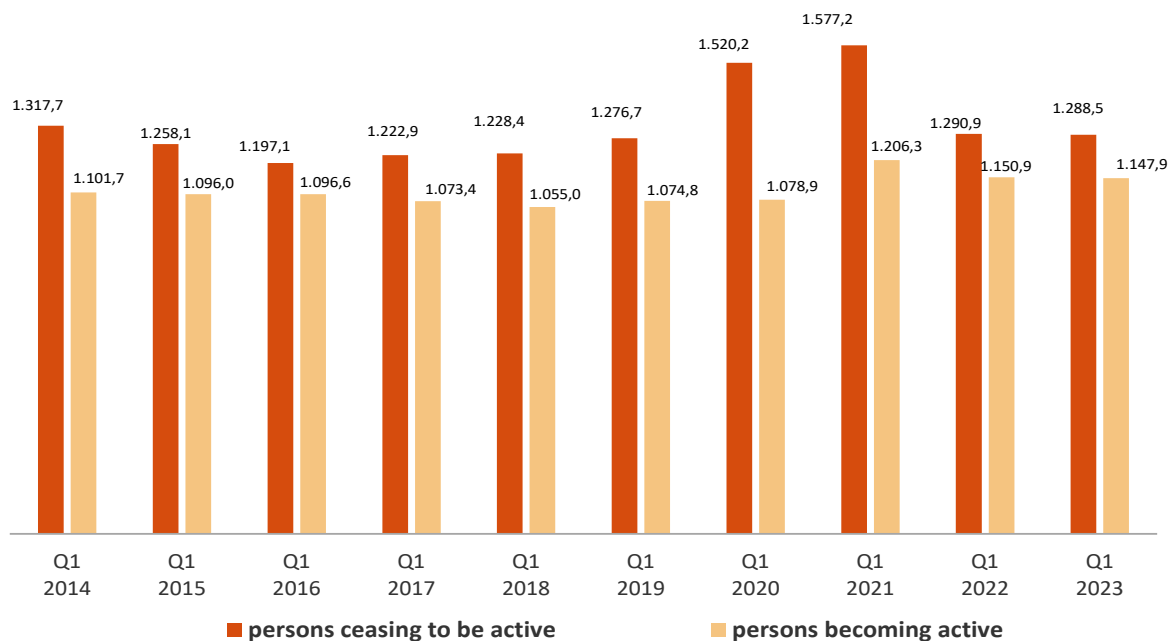
Flows of persons becoming and ceasing to be unemployed each quarter Thousands



The inflow to activity in this first quarter was 1,147,900, a figure 3,000 lower than that of the same period in 2022.

Meanwhile, a total of 1,288,500 people have left the activity this quarter, compared to 1,290,900 who did so during the same quarter in the previous year (that is, 2,400 less).

Flows of persons becoming and ceasing to be active each quarter Thousands



The outflow from employment to inactivity of people aged 60 and over was 123,100 this quarter. This figure is 8,800 persons higher than the one observed in the same period of 2022.

The number of people under 25 who have entered employment directly from inactivity this quarter stood at 140,100, a figure 3,400 persons lower than that observed in the same quarter of 2022.

The flow data on which these comments are based can be found in the annex to this press release <http://www.ine.es/daco/daco42/daco4211/epafiu0123.xlsx>

EAPS results by province

The provincial results summary of the EAPS may be accessed via the following link:

<http://www.ine.es/daco/daco42/daco4211/epapro0123.pdf>

All the provincial information can also be accessed from the INEbase database:

<http://www.ine.es/dynt3/inebase/index.html?padre=996>

Data Review and Update

The data published today are final. All results are available on INEBase.

Methodological note

The Labour Force Survey (EAPS) has been carried out since 1964. The methodology currently used was put in place in 2021, and adapts the previous methodology (begun in 2005) to the new regulations of the European Labour Force Survey.

It is a continuous, quarterly research addressed to families, whose main purpose is to obtain data on the labour force and its various categories (employed, unemployed), as well as on the population outside the labour market (inactive).

As of the third quarter of 2009, the survey includes an additional sample in Galicia that is collected by the Galician Statistics Institute (IGE) using the same fieldwork system and methodology as the INE.

Type of survey: quarterly continuous survey.

Population scope: population residing in family dwellings.

Geographical scope: the entire national territory.

Reference period of the results: the quarter.

Reference period of the information: the week before the interview.

Sample size: 3,822 census tracts, around 65,000 dwellings and 160,000 people. Of the 3,822 tracts, 234 correspond to the additional sample of Galicia.

Gradually the number of sections will increase to a total of 5,298 in 2024, of which 288 correspond to the additional sample from Galicia. The number of homes selected per section will go from an average of 20 to 14.

Type of sampling – Two-stage sampling with stratification in the first stage units. The first stage units are the census tracts and the second stage units are the inhabited family dwellings.

Collection method: personal, telephone, and web interview.

For more information, the methodology and technical details of the survey design and data quality assessment can be accessed at:

https://www.ine.es/dyngs/INEbase/es/operacion.htm?c=Estadistica_C&cid=1254736176918&menu=metodologia&idp=1254735976595

The standardized methodological report is at:

<https://www.ine.es/dynt3/metadatos/es/RespuestaDatos.html?oe=30308>

INE statistics are produced in accordance with the Code of Good Practice for European Statistics, which is the basis for the institution's quality policy and strategy. Para más información, véase la sección de [Calidad en el INE y Código de Buenas Prácticas](#) en la página web del INE

The Statistics on Economically Active Population Flows (EAPFS) collect information regarding the follow-up of the population, or specific groups thereof, between one quarter and the previous one in absolute values, regarding its relation with labour market. This information links the interviewee's situations in two moments of time on the basis of the EAPS in order to study its evolution.

Given that in the EAPS sample one sixth is renewed each quarter and the remaining 5/6 parts are kept fixed between two consecutive quarters, the common part of the sample between the two conducts of the survey is used to obtain flow statistics from the questions relating to the situation in which the interviewee was in the current and previous quarters.

Type of survey: quarterly exploitation of the common EAPS sample between consecutive quarters that provides estimates in absolute values of the relation with the activity in the current period compared with that of the previous quarter.

Population scope: population residing in family dwellings.

Geographical scope: the entire national territory.

Reference period of the results: the quarter.

Reference period of the information: the week before the interview.

Sample size: 3,822 census tracts. The common EAPS sample between consecutive quarters is approximately 100,000 people aged 16 and older. Gradually the number of sections will increase to a total of 5,298 in 2024, of which 288 correspond to the additional sample from Galicia. The number of homes selected per section will go from an average of 20 to 14.

Type of sampling – Two-stage sampling with stratification in the first stage units. The first stage units are the census tracts and the second stage units are the inhabited family dwellings.

Collection method: personal and telephone interview.

For more information the methodology can be accessed at:

https://www.ine.es/inebaseDYN/flujos30310/docs/metoflujos_valores_absolutos.pdf

The standardized methodological report is at:

<https://www.ine.es/dynt3/metadatos/es/RespuestaDatos.html?oe=30310>

For further information see **INEbase:** www.ine.es/en/ Twitter: [@es_ine](https://twitter.com/es_ine)

All press releases at: www.ine.es/en/prensa/prensa_en.htm

Press office: Telephone numbers: (+34) 91 583 93 63 /94 08 – gprensa@ine.es

Information Area: Telephone number: (+34) 91 583 91 00 – www.ine.es/infoine/?L=1

Economically Active Population Survey First Quarter 2023

National results

(Absolute figures in thousands and rates in percentage)

	Current quarter	Variation on previous quarter		Variation on same quarter, previous year	
		Difference	Percentage	Difference	Percentage
1. Population aged 16 years and over by sex and labour status					
BOTH SEXES					
Population aged 16 years and over	40.274,0	137,5	0,34	512,4	1,29
Active population	23.580,5	92,7	0,39	321,1	1,38
- Employed persons	20.452,8	-11,1	-0,05	368,0	1,83
- Unemployed persons	3.127,8	103,8	3,43	-47,0	-1,48
Inactive population	16.693,5	44,9	0,27	191,3	1,16
Activity rate	58,55	0,03	-	0,05	-
Unemployment rate	13,26	0,39	-	-0,38	-
Population aged 16 to 64 years	30.884,5	87,7	0,28	327,9	1,07
Activity rate (16-64)	75,25	0,07	-	0,20	-
Unemployment rate (16-64)	13,36	0,38	-	-0,39	-
Employment rate (16-64)	65,20	-0,23	-	0,46	-
MALES					
Population aged 16 years and over	19.555,2	71,4	0,37	243,3	1,26
Active population	12.354,3	-24,3	-0,20	85,7	0,70
- Employed persons	10.924,9	-52,8	-0,48	133,6	1,24
- Unemployed persons	1.429,4	28,4	2,03	-47,9	-3,24
Inactive population	7.200,8	95,7	1,35	157,6	2,24
Activity rate	63,18	-0,36	-	-0,35	-
Unemployment rate	11,57	0,25	-	-0,47	-
Population aged 16 to 64 years	15.413,8	47,8	0,31	157,1	1,03
Activity rate (16-64)	78,92	-0,45	-	-0,29	-
Unemployment rate (16-64)	11,66	0,24	-	-0,46	-
Employment rate (16-64)	69,72	-0,59	-	0,11	-
FEMALES					
Population aged 16 years and over	20.718,8	66,2	0,32	269,1	1,32
Active population	11.226,2	117,0	1,05	235,3	2,14
- Employed persons	9.527,8	41,7	0,44	234,4	2,52
- Unemployed persons	1.698,4	75,4	4,64	0,9	0,05
Inactive population	9.492,7	-50,9	-0,53	33,7	0,36
Activity rate	54,18	0,39	-	0,44	-
Unemployment rate	15,13	0,52	-	-0,32	-
Population aged 16 to 64 years	15.470,7	39,9	0,26	170,7	1,12
Activity rate (16-64)	71,60	0,57	-	0,69	-
Unemployment rate (16-64)	15,22	0,50	-	-0,32	-
Employment rate (16-64)	60,70	0,13	-	0,81	-

2. Spanish population⁽¹⁾ aged 16 years and over by labour status

SPANISH POPULATION AGED 16 YEARS AND OVER	35.379,6	28,8	0,08	122,3	0,35
Active population	20.190,3	7,3	0,04	72,9	0,36
- Employed persons	17.737,4	-37,9	-0,21	124,6	0,71
- Unemployed persons	2.453,0	45,2	1,88	-51,7	-2,06
Inactive population	15.189,2	21,6	0,14	49,3	0,33
Activity rate	57,07	-0,03	-	0,01	-
Unemployment rate	12,15	0,22	-	-0,30	-

⁽¹⁾ including dual nationality

27 April 2023

National results

(Absolute figures in thousands and rates in percentage)

	Current quarter	Variation on previous quarter		Variation on same quarter, previous year	
		Difference	Percentage	Difference	Percentage
3. Foreign population aged 16 years and over by labour status					
FOREIGN POPULATION AGED 16 YEARS AND OVER	4.894,4	108,7	2,27	390,1	8,66
Active population	3.390,2	85,4	2,58	248,1	7,90
- Employed persons	2.715,4	26,8	1,00	243,4	9,85
- Unemployed persons	674,8	58,6	9,51	4,7	0,70
Inactive population	1.504,3	23,3	1,57	142,0	10,42
Activity rate	69,27	0,21	-	-0,49	-
Unemployment rate	19,90	1,26	-	-1,42	-

4. Employed persons by sex, age group and economic sector

BOTH SEXES	20.452,8	-11,1	-0,05	368,0	1,83
16 to 19 years	137,3	-16,0	-10,45	-4,6	-3,27
20 to 24 years	968,1	-0,5	-0,05	48,2	5,24
25 to 29 years	1.765,5	12,4	0,71	54,3	3,17
30 to 34 years	2.102,1	15,2	0,73	50,6	2,47
35 to 39 years	2.349,6	-20,6	-0,87	-24,0	-1,01
40 to 44 years	2.930,4	-55,6	-1,86	-54,1	-1,81
45 to 49 years	3.155,6	-12,2	-0,39	28,1	0,90
50 to 54 years	2.818,8	25,7	0,92	73,2	2,66
55 and over	4.225,3	40,5	0,97	196,3	4,87
MALES	10.924,9	-52,8	-0,48	133,6	1,24
16 to 19 years	74,1	-14,2	-16,08	-7,2	-8,86
20 to 24 years	528,9	-1,0	-0,19	36,8	7,47
25 to 29 years	920,9	-3,2	-0,34	41,1	4,67
30 to 34 years	1.112,1	16,1	1,47	35,1	3,26
35 to 39 years	1.231,9	-15,7	-1,26	-24,9	-1,98
40 to 44 years	1.540,5	-38,8	-2,46	-60,7	-3,79
45 to 49 years	1.694,9	-4,8	-0,28	-12,4	-0,72
50 to 54 years	1.527,9	9,3	0,61	34,9	2,34
55 and over	2.293,6	-0,5	-0,02	90,9	4,13
FEMALES	9.527,8	41,7	0,44	234,4	2,52
16 to 19 years	63,2	-1,8	-2,80	2,6	4,25
20 to 24 years	439,2	0,5	0,11	11,4	2,67
25 to 29 years	844,6	15,5	1,87	13,2	1,59
30 to 34 years	990,0	-0,8	-0,08	15,5	1,59
35 to 39 years	1.117,7	-4,9	-0,44	0,9	0,08
40 to 44 years	1.389,9	-16,8	-1,20	6,6	0,48
45 to 49 years	1.460,7	-7,4	-0,50	40,5	2,85
50 to 54 years	1.290,9	16,4	1,29	38,2	3,05
55 and over	1.931,7	41,0	2,17	105,5	5,77
TOTAL EMPLOYED PERSONS	20.452,8	-11,1	-0,05	368,0	1,83
Agriculture	748,2	-5,0	-0,67	-79,5	-9,60
Industry	2.790,6	-11,2	-0,40	93,5	3,46
Construction	1.298,1	-2,7	-0,21	-18,2	-1,38
Services	15.615,9	7,8	0,05	372,2	2,44

National results

(Absolute figures in thousands)

	Current quarter	Variation on previous quarter		Variation on same quarter, previous year	
		Difference	Percentage	Difference	Percentage

5. Employed persons by professional status, type of contract, public / private sectors and working hours

TOTAL EMPLOYED PERSONS	20.452,8	-11,1	-0,05	368,0	1,83
BY PROFESSIONAL STATUS					
Self-employed persons	3.098,9	12,1	0,39	-43,4	-1,38
- Employers	981,6	-6,6	-0,67	11,6	1,19
- Independent workers	2.033,0	41,9	2,10	-51,2	-2,46
- Cooperative members	24,8	-5,0	-16,75	-2,5	-9,24
- Family workers	59,5	-18,2	-23,40	-1,3	-2,07
Employees	17.348,3	-23,2	-0,13	419,8	2,48
- With a permanent job	14.350,6	93,8	0,66	1.520,8	11,85
- With a temporary job	2.997,7	-117,0	-3,76	-1.101,0	-26,86
Others	5,6	0,0	0,51	-8,3	-59,89
BY PUBLIC / PRIVATE SECTORS					
Public sector employed persons	3.523,9	-2,3	-0,07	55,7	1,61
Private sector employed persons	16.928,9	-8,8	-0,05	312,3	1,88
BY WORKING HOURS					
Full-time employed persons	17.647,4	-34,7	-0,20	372,0	2,15
Males	10.210,1	-31,6	-0,31	116,0	1,15
Females	7.437,4	-3,1	-0,04	256,0	3,56
Part-time employed persons	2.805,3	23,6	0,85	-4,0	-0,14
Males	714,9	-21,2	-2,88	17,6	2,53
Females	2.090,4	44,8	2,19	-21,6	-1,02

(*) Private employment includes all persons in employment other than public employees. Namely: private employees, employers, independent workers, cooperative members, family workers and other professional status.

6. Unemployed persons by sex, age group, and economic sector

BOTH SEXES	3.127,8	103,8	3,43	-47,0	-1,48
16 to 19 years	121,4	6,5	5,70	-1,7	-1,38
20 to 24 years	353,2	3,8	1,10	17,1	5,10
25 to 54 years	2.088,4	52,4	2,57	-64,4	-2,99
55 and over	564,9	41,0	7,82	2,0	0,35
MALES	1.429,4	28,4	2,03	-47,9	-3,24
16 to 19 years	67,4	-1,5	-2,19	3,2	4,93
20 to 24 years	178,8	-1,4	-0,76	-6,0	-3,23
25 to 54 years	918,3	11,5	1,27	-40,6	-4,24
55 and over	264,8	19,8	8,08	-4,4	-1,65
FEMALES	1.698,4	75,4	4,64	0,9	0,05
16 to 19 years	53,9	8,1	17,57	-4,9	-8,27
20 to 24 years	174,3	5,2	3,08	23,1	15,29
25 to 54 years	1.170,1	40,9	3,62	-23,8	-1,99
55 and over	300,0	21,2	7,60	6,4	2,18
TOTAL UNEMPLOYED PERSONS	3.127,8	103,8	3,43	-47,0	-1,48
Agriculture	137,0	-8,6	-5,89	-17,8	-11,47
Industry	160,1	12,4	8,37	3,8	2,42
Construction	133,4	18,6	16,17	17,6	15,23
Services	1.256,5	147,7	13,32	152,5	13,82
Lost their job more than 1 year ago	1.125,9	-58,3	-4,92	-198,5	-14,99
First job seekers	314,9	-8,0	-2,48	-4,7	-1,47

National results

(Absolute figures in thousands and rates in percentage)

	Current quarter	Variation on previous quarter		Variation on same quarter, previous year	
		Difference	Percentage	Difference	Percentage

7. Unemployment rate by relationship with the reference person

	Current quarter	Difference	Percentage	Difference	Percentage
TOTAL	13,26	0,39	-	-0,38	-
Reference person	11,51	0,33	-	-0,03	-
Spouse or partner	10,26	0,32	-	-0,74	-
Child	23,54	0,86	-	-0,41	-
Other relatives	19,27	0,10	-	-1,52	-
Unrelated persons	14,62	1,47	-	0,55	-

8. Household data

	Current quarter	Difference	Percentage	Difference	Percentage
TOTAL HOUSEHOLDS	19.280,9	80,1	0,42	241,4	1,27
Households with at least one active men	13.882,6	36,0	0,26	132,3	0,96
- All members employed	11.212,1	-43,3	-0,38	162,4	1,47
- All members unemployed	1.055,3	7,8	0,75	2,5	0,23
Households without any active populatio	5.398,3	44,2	0,83	109,1	2,06

Mobility according to activity in current and previous quarter

Classification in previous quarter	Classification in current quarter			
	Total	Employed	Unemployed persons	Inactive
BOTH SEXES				
Total	40.274,0	20.452,8	3.127,8	16.693,5
Employed persons	20.496,8	19.352,1	610,3	534,4
Unemployed persons	3.075,3	667,1	1.793,6	614,6
Inactive	16.552,9	429,1	718,8	15.405,0
Not classifiable	149,0	4,5	5,0	139,5
MALES				
Total	19.554,0	10.946,5	1.429,3	7.178,2
Employed persons	10.988,8	10.432,7	317,7	238,3
Unemployed persons	1.414,9	317,4	834,1	263,5
Inactive	7.077,0	193,4	273,6	6.610,0
Not classifiable	73,4	3,0	3,9	66,5
FEMALES				
Total	20.720,1	9.506,3	1.698,5	9.515,2
Employed persons	9.508,0	8.919,3	292,6	296,1
Unemployed persons	1.660,5	349,7	959,6	351,2
Inactive	9.475,9	235,7	445,2	8.795,0
Not classifiable	75,7	1,6	1,1	73,0

Data obtained from the Statistics on Economically Active Population Flow

Results by autonomous community and autonomous city

(Absolute figures in thousands)

	Current quarter	Variation on previous quarter		Variation on same quarter, previous year	
		Difference	Percentage	Difference	Percentage
1. Population aged 16 years and over					
TOTAL	40.274,0	137,5	0,34	512,4	1,29
Andalucía	7.155,2	16,5	0,23	72,8	1,03
Aragón	1.107,9	4,2	0,38	12,0	1,10
Asturias, Principado de	883,7	0,7	0,08	1,6	0,18
Balears, Illes	1.052,1	2,7	0,25	23,0	2,24
Canarias	1.972,9	10,3	0,53	26,8	1,38
Cantabria	501,8	0,3	0,06	2,0	0,41
Castilla y León	2.036,5	4,0	0,20	7,0	0,34
Castilla-La Mancha	1.719,6	4,7	0,27	19,0	1,12
Cataluña	6.477,3	41,5	0,65	119,4	1,88
Comunitat Valenciana	4.343,3	22,4	0,52	88,1	2,07
Extremadura	890,1	1,1	0,12	-2,5	-0,28
Galicia	2.346,5	0,9	0,04	6,4	0,27
Madrid, Comunidad de	5.725,0	16,4	0,29	97,7	1,74
Murcia, Región de	1.266,7	1,9	0,15	18,5	1,48
Navarra, Comunidad Foral de	551,4	2,1	0,38	7,1	1,31
País Vasco	1.847,5	7,2	0,39	7,9	0,43
Rioja, La	267,6	1,3	0,49	4,0	1,52
Ceuta	65,1	-0,6	-0,90	-0,4	-0,67
Melilla	63,6	0,0	-0,01	1,8	2,91

2. Active population

TOTAL	23.580,5	92,7	0,39	321,1	1,38
Andalucía	4.073,3	47,2	1,17	79,6	1,99
Aragón	649,3	4,6	0,72	0,1	0,01
Asturias, Principado de	439,3	-6,2	-1,39	-0,5	-0,12
Balears, Illes	650,1	9,4	1,47	0,8	0,12
Canarias	1.179,7	19,9	1,72	23,9	2,06
Cantabria	272,0	-0,1	-0,03	0,5	0,20
Castilla y León	1.106,7	-5,9	-0,53	-3,1	-0,28
Castilla-La Mancha	1.018,0	-1,6	-0,16	18,5	1,85
Cataluña	3.928,5	22,3	0,57	77,0	2,00
Comunitat Valenciana	2.558,8	-6,9	-0,27	85,2	3,44
Extremadura	501,1	8,3	1,68	10,6	2,15
Galicia	1.238,7	2,8	0,23	6,3	0,51
Madrid, Comunidad de	3.623,4	15,2	0,42	27,6	0,77
Murcia, Región de	750,8	-3,7	-0,49	7,6	1,03
Navarra, Comunidad Foral de	324,1	-1,8	-0,55	1,7	0,53
País Vasco	1.031,7	-7,6	-0,73	-12,3	-1,18
Rioja, La	159,5	0,5	0,29	1,3	0,85
Ceuta	39,9	-2,1	-5,09	-0,2	-0,44
Melilla	35,7	-1,6	-4,29	-3,5	-9,01

* Data below 5000 are subject to strong variations, due to sampling error

Results by autonomous community and autonomous city

(Absolute figures in thousands)

	Current quarter	Variation on previous quarter		Variation on same quarter, previous year	
		Difference	Percentage	Difference	Percentage
3. Employed persons					
TOTAL	20.452,8	-11,1	-0,05	368,0	1,83
Andalucía	3.327,5	66,3	2,03	109,7	3,41
Aragón	591,2	7,3	1,24	7,9	1,35
Asturias, Principado de	381,9	0,5	0,14	-5,3	-1,37
Balears, Illes	532,2	-38,6	-6,76	-0,1	-0,01
Canarias	977,2	-13,6	-1,37	55,9	6,07
Cantabria	246,7	2,8	1,13	3,9	1,59
Castilla y León	993,0	-21,4	-2,11	6,2	0,62
Castilla-La Mancha	865,1	-7,8	-0,90	8,2	0,95
Cataluña	3.521,3	2,3	0,07	64,0	1,85
Comunitat Valenciana	2.206,3	-12,2	-0,55	50,6	2,35
Extremadura	403,2	-2,8	-0,68	5,8	1,45
Galicia	1.103,7	-0,8	-0,08	12,3	1,13
Madrid, Comunidad de	3.224,3	31,4	0,98	54,6	1,72
Murcia, Región de	649,6	-7,6	-1,16	6,3	0,98
Navarra, Comunidad Foral de	284,8	-8,2	-2,81	-4,0	-1,37
País Vasco	944,6	-4,7	-0,50	-8,7	-0,91
Rioja, La	143,4	-1,9	-1,32	3,0	2,14
Ceuta	30,3	1,1	3,90	2,0	6,93
Melilla	26,4	-3,0	-10,19	-4,2	-13,61

4. Unemployed persons

TOTAL	3.127,8	103,8	3,43	-47,0	-1,48
Andalucía	745,8	-19,1	-2,49	-30,0	-3,87
Aragón	58,0	-2,6	-4,34	-7,8	-11,81
Asturias, Principado de	57,4	-6,7	-10,49	4,8	9,03
Balears, Illes	117,9	48,0	68,76	0,8	0,72
Canarias	202,5	33,5	19,82	-32,1	-13,67
Cantabria	25,3	-2,9	-10,13	-3,3	-11,58
Castilla y León	113,8	15,5	15,75	-9,3	-7,52
Castilla-La Mancha	152,9	6,3	4,27	10,3	7,21
Cataluña	407,2	20,0	5,17	13,0	3,30
Comunitat Valenciana	352,5	5,3	1,53	34,6	10,90
Extremadura	97,9	11,0	12,72	4,8	5,15
Galicia	135,1	3,7	2,81	-6,0	-4,24
Madrid, Comunidad de	399,1	-16,2	-3,90	-27,0	-6,33
Murcia, Región de	101,2	3,9	3,99	1,3	1,31
Navarra, Comunidad Foral de	39,3	6,4	19,54	5,7	16,84
País Vasco	87,1	-2,9	-3,24	-3,7	-4,04
Rioja, La	16,0	2,4	17,41	-1,7	-9,43
Ceuta	9,6	-3,3	-25,51	-2,1	-18,29
Melilla	9,3	1,4	17,63	0,6	7,18

* Data below 5,000 are subject to strong variations, due to sampling error

Results by autonomous community and autonomous city

(Absolute figures in thousands and rates in percentage)

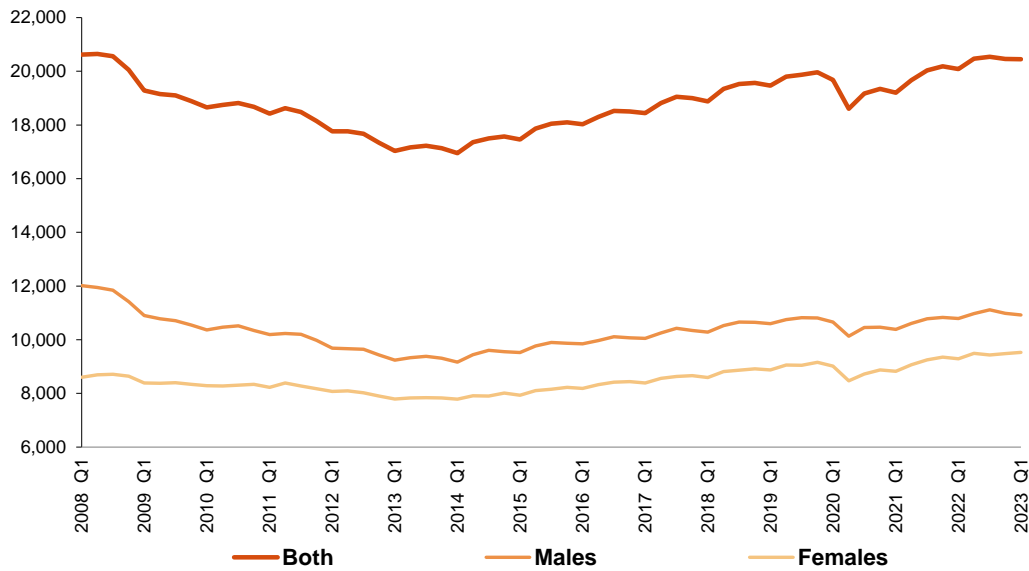
5. Employed and unemployed persons by sex. Activity and unemployment rates

	Both sexes				Males				Females			
	Employed persons	Unemployed persons	Activity rate	Unem. rate	Employed persons	Unemployed persons	Activity rate	Unem. Rate	Employed persons	Unemployed persons	Activity rate	Unem. Rate
TOTAL	20.452,8	3.127,8	58,55	13,26	10.924,9	1.429,4	63,18	11,57	9.527,8	1.698,4	54,18	15,13
Andalucía	3.327,5	745,8	56,93	18,31	1.840,9	331,9	62,12	15,28	1.486,6	413,9	51,96	21,78
Aragón	591,2	58,0	58,60	8,94	315,1	22,5	62,35	6,68	276,2	35,5	55,02	11,38
Asturias, Principado de	381,9	57,4	49,71	13,06	194,1	27,6	52,93	12,47	187,9	29,7	46,81	13,66
Baleares, Illes	532,2	117,9	61,79	18,14	287,7	59,7	66,67	17,18	244,5	58,2	57,00	19,24
Canarias	977,2	202,5	59,79	17,17	520,3	98,3	64,04	15,89	456,8	104,2	55,71	18,57
Cantabria	246,7	25,3	54,21	9,29	132,8	10,2	58,84	7,10	113,9	15,1	49,86	11,72
Castilla y León	993,0	113,8	54,34	10,28	541,4	49,5	59,14	8,38	451,6	64,3	49,72	12,46
Castilla-La Mancha	865,1	152,9	59,20	15,02	499,3	62,9	65,46	11,18	365,8	90,0	52,95	19,75
Cataluña	3.521,3	407,2	60,65	10,37	1.827,3	204,1	64,79	10,05	1.694,0	203,0	56,76	10,70
Comunitat Valenciana	2.206,3	352,5	58,91	13,78	1.200,4	152,1	64,00	11,25	1.005,9	200,4	54,09	16,61
Extremadura	403,2	97,9	56,30	19,53	228,7	43,3	61,81	15,92	174,5	54,6	50,91	23,82
Galicia	1.103,7	135,1	52,79	10,90	571,9	64,1	56,62	10,07	531,7	71,0	49,28	11,78
Madrid, Comunidad de	3.224,3	399,1	63,29	11,01	1.639,6	181,1	67,08	9,95	1.584,7	218,0	59,88	12,09
Murcia, Región de	649,6	101,2	59,27	13,48	366,9	46,6	65,67	11,26	282,7	54,6	52,95	16,19
Navarra, Comunidad Foral de	284,8	39,3	58,78	12,13	151,6	20,1	63,31	11,69	133,2	19,3	54,40	12,63
País Vasco	944,6	87,1	55,84	8,44	497,5	38,2	60,41	7,14	447,0	48,9	51,62	9,85
Rioja, La	143,4	16,0	59,59	10,06	77,5	7,5	64,78	8,83	65,9	8,5	54,59	11,47
Ceuta	30,3	9,6	61,27	23,97	18,1	4,7	67,29	20,51	12,3	4,9	54,77	28,57
Melilla	26,4	9,3	56,09	26,06	13,8	5,0	62,16	26,68	12,6	4,3	50,56	25,36

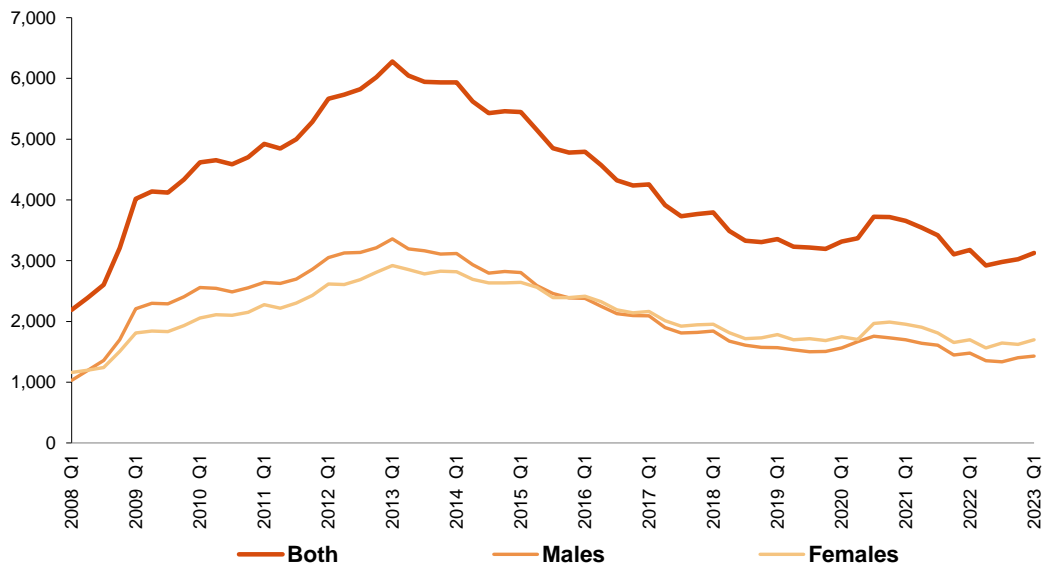
* Data below 5,000 are subject to strong variations, due to sampling errors

Employed and Unemployed by sex EAPS
First Quarter 2023

Employed. Thousands



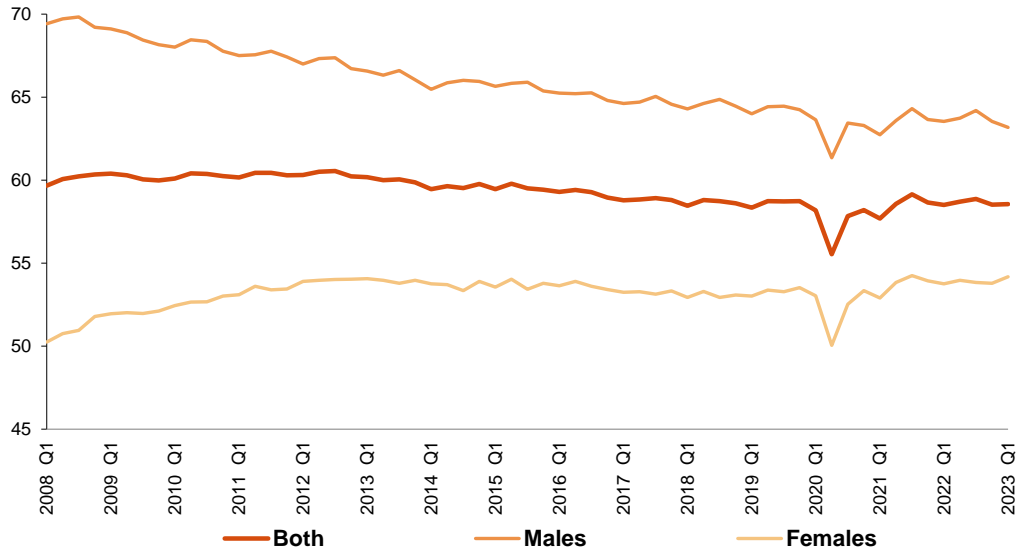
Unemployed. Thousands



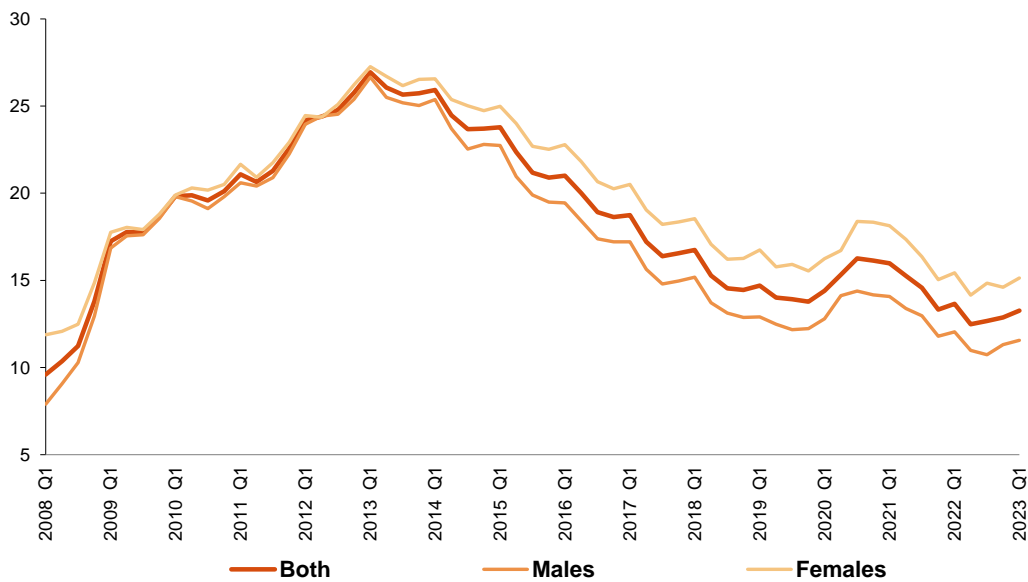
Activity and unemployment rates by sex
First Quarter 2023

EAPS

Activity rate. Percentage



Unemployment rate. Percentage

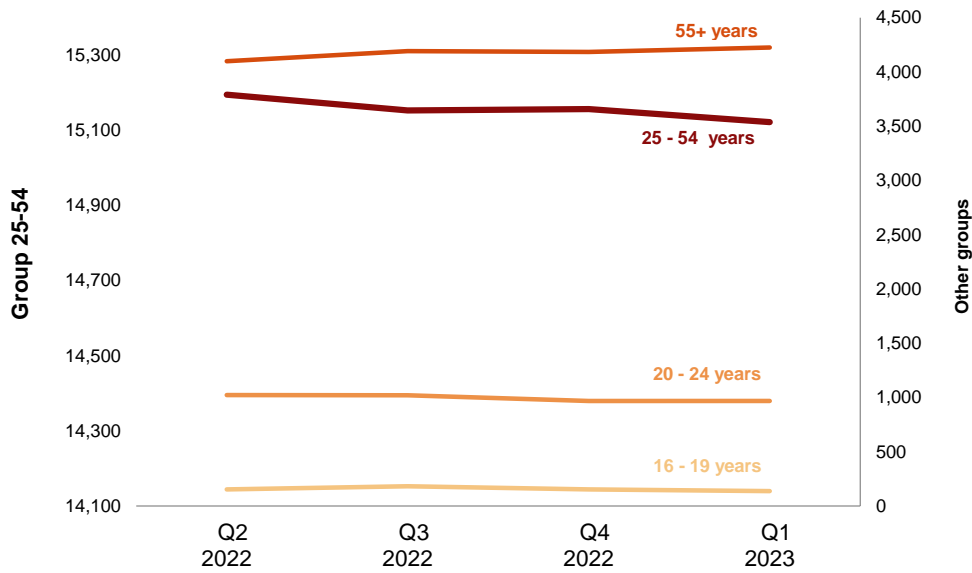


Employment by age

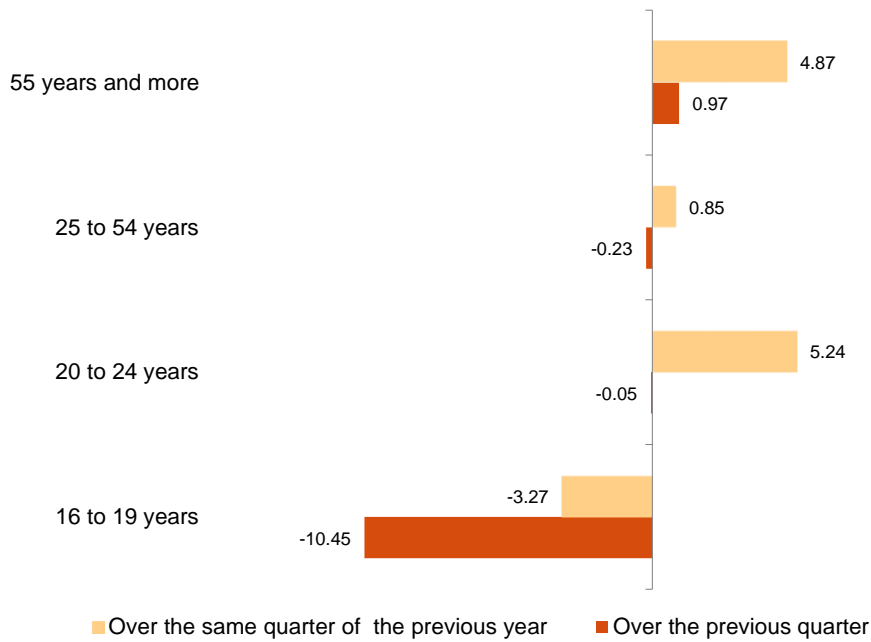
First Quarter 2023

EAPS

Employment. Thousands



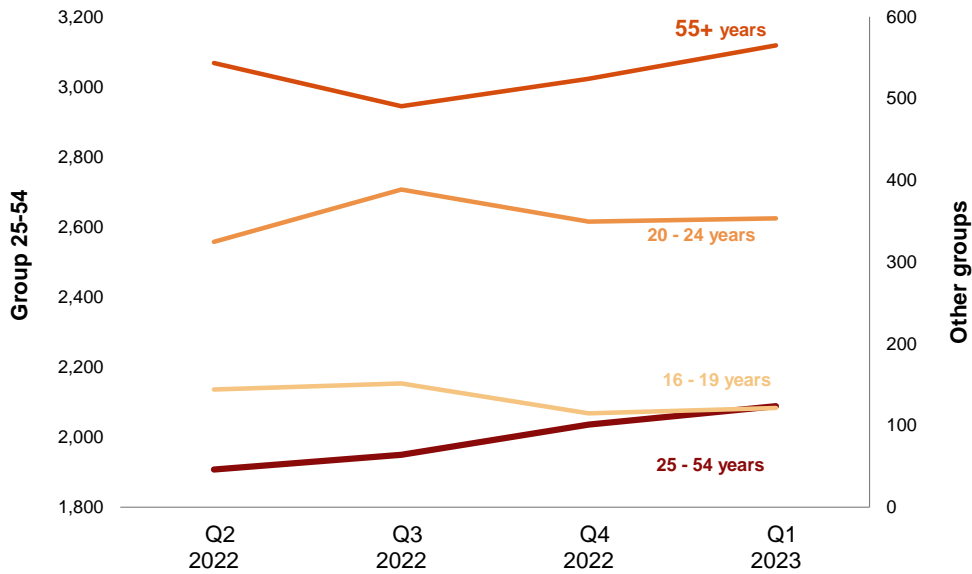
Variation of employment. Thousands



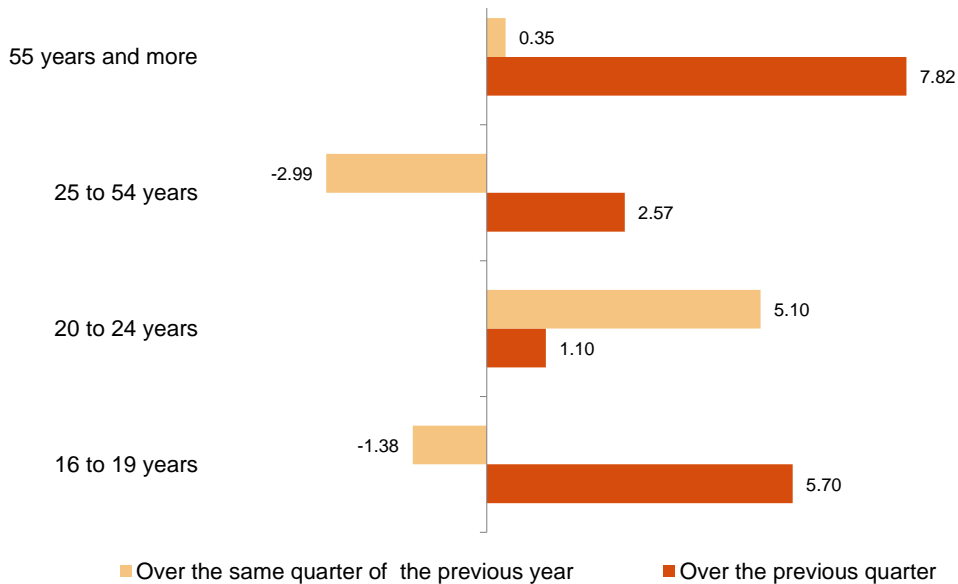
Unemployment by age
First Quarter 2023

EAPS

Unemployment. Thousands



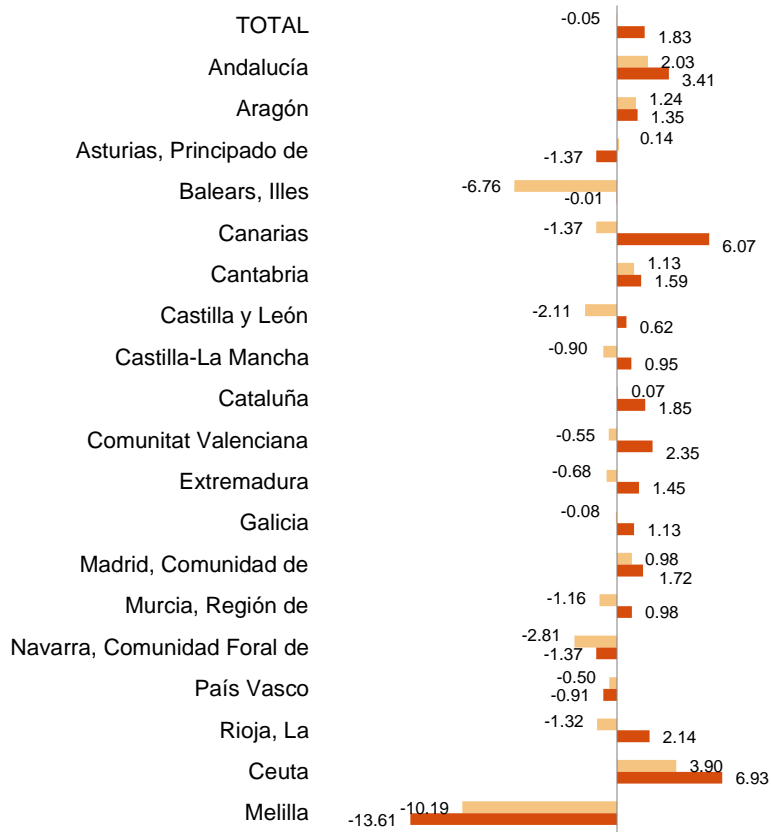
Variation of unemployment. Thousands



First Quarter 2023

EAPS

Variation of employment. Percentage



Over the previous quarter Over the same quarter of the previous year

Unemployment rate Percentage
(Spain= 13.26)

