

24 July 2009

## **Economically Active Population Survey (EAPS) Second quarter of 2009**

### **Main results**

- The number of employed persons decreases by 145,800 persons in the second quarter of 2009, as compared with the previous quarter, standing at 18,945,000. In the last year, employment has decreased by 1,480,200 persons. The interannual employment variation rate stands at  $-7.25\%$ .
- The activity rate stands at  $60.06\%$ , nine hundredths less than in the first quarter. For men, the rate is  $68.89\%$  (22 hundredths lower than that of the previous quarter) and for women,  $51.55\%$  (five hundredths higher).
- The number of unemployed persons increases by 126,700 as compared with the previous quarter, standing at 4,137,500. The unemployment rate increases 56 hundredths, reaching  $17.92\%$ . The number of unemployed persons had increased by 1,755,900 during the last 12 months.
- The total number of wage earners decreases by 106,200 persons as compared with the previous quarter, and stands at 15,736,800. The number of wage earners has decreased by 1,116,200 persons in the last year. Wage earners with a permanent contract decrease by 52,000, and temporary wage earners decrease by 54,200 this quarter. The temporary employment rate therefore stands at  $25.24\%$ , with a decrease of 17 hundredths as compared with the previous quarter.
- In the second quarter of 2009, the number of employed persons increases in Illes Balears (36,400 more employed persons) and, to a lesser extent, in Extremadura (7,400) and Castilla y León (4,100). The greatest decreases in the number of employed persons this quarter are observed in Andalucía (52,200 fewer employed persons), Cataluña (40,600), Comunitat Valenciana (30,200) and Galicia (21,100).
- The greatest decreases in unemployment this quarter are in Cataluña (20,800 fewer unemployed persons), Extremadura (8,300) and Canarias (7,500). The greatest increases in unemployment are observed in Comunitat Valenciana (57,500 more unemployed persons than the previous quarter), Andalucía (54,600), Castilla-La Mancha (14,600) and Principado de Asturias (9,900).

## **The number of active persons decreases by 19,100, standing at 23,082,400**

The total number of active persons reached 23,082,400 in the second quarter of 2009, with a decrease of 19,100 persons as compared with the previous quarter. The activity rate was 60.06%, that is, nine hundredths less than in the previous quarter.

The number of active women increased by 17,700 persons this quarter, standing at 10,092,500. The female activity rate increased five hundredths, reaching 51.55%. On the other hand, the number of active men stood at 12,990,000, with a decrease of 36,700 persons. The male activity rate decreased 22 hundredths this second quarter, standing at 68.89%.

In the last 12 months, the number of active persons increased by 275,700, practically equal to the population aged 16 years old and over. There was an increase of 328,100 in women, whereas active men decreased by 52,300.

The activity rate of the foreign population (77.51%) decreased 47 hundredths during the quarter, whereas of the Spanish population decreased four hundredths to 57.58%. The difference between the two rates is practically 20 points. To a large extent, the age structure of the foreign nationals explained this difference.

## **Employment decreases by 145,800 persons this quarter, to 18,945,000**

The number of employed persons stood at 18,945,000 persons, 145,800 fewer than in the first quarter of the year. In the last 12 months, the number of employed persons decreased by 1,480,200.

The interannual employment variation rate was -7.25% in the second quarter of 2009, that is, 82 hundredths less than in the first quarter (-6.43%).

The number of employed women decreased by 15,800 this quarter, whereas employment of men decreased by 130,000.

In the last 12 months, the number of employed women decreased by 321,600, and the number of men decreased by 1,158,500.

The number of employed Spaniards decreased by 150,600 in the last three months, whereas the number of employed foreign nationals increased by 4,800. In the second quarter of 2009, 14.10% of the total number of employed persons were foreign nationals.

The number of employed persons increased in the group aged 35 to 39 years old (24,600 more) and in those aged 45 and over, and decreased in the rest of the groups. The sharpest decrease was in young persons between the ages of 20 and 24 years old (62,700 fewer employed persons).

Distinguishing by sex, more diverse behaviour was observed in the most advanced age group. The number of men aged 55 years old and over decreased by 20,400, whereas employed women in the same group increased by 20,500. Among women between the ages of 35 and 39, employment increased by 24,100.

Regarding quarter-on-quarter evolution by sector<sup>1</sup> of activity, the number of those employed in Agriculture decreased by 51,100, standing at 786,600. Those employed in Industry decreased by 100,800 persons, to a total of 2,799,400. In the Construction sector, there was a decrease of 55,900 in the number of employed persons in the second quarter, with total employment for the sector standing at 1,922,100 persons. Lastly, the number of those employed in Services stood at 13,436,900, with an increase of 62,000 employed persons as compared with the previous quarter.

The interannual variation rate for employment decreased 627,400 in Construction (–24.61%), 445,000 in Industry (–13.72%), 34,100 in Agriculture (–4.16%) and 373,700 in Services (–2.71%).

### **The number of wage earners with a temporary contract decreases by 54,200, and that of wage earners with a permanent contract decreases by 52,000**

The total number of wage earners in the second quarter of 2009 was 15,736,800, with a decrease of 106,200 persons as compared with the previous quarter. The number of wage earners with a permanent contract decreased by 52,000, standing at 11,765,300 persons. Wage earners with a temporary contract decreased by 54,200 persons, to a total of 3,971,500.

The temporary employment rate stood at 25.24%, that is, 17 hundredths below the rate from the previous quarter.

In the last 12 months, the total number of wage earners decreased by 1,116,200 persons. Wage earners with a permanent contract decreased by 135,200 persons, and those with a temporary contract decreased by 981,000.

The salary rate increased eight hundredths, standing at 83.07%.

Regarding the **working day**, in this quarter, 2,450,600 part-time employed persons were registered, 27,700 more than in the previous quarter. Of these, 1,938,200 were women (16,000 more than three months ago), and 512,300 were men (11,700 more).

Those employed full-time decreased by 173,500 as compared with the previous quarter. The number of men employed full-time decreased by 141,700, whereas the number of women decreased by 31,700.

The percentage of part-time employed persons was 12.94%, that is, 25 hundredths more than the previous quarter.

### **Unemployment this quarter stands at 4,137,500 persons, and the unemployment rate increases to 17.92%**

Unemployment increased by 126,700 persons this quarter. The total number of unemployed persons was 4,137,500, with an increase of 1,755,900 persons during the last 12 months.

The unemployment rate increased 56 hundredths in the second quarter of the year, reaching 17.92% of the active population.

---

<sup>1</sup> By CNAE-2009 classification

Unemployment increased more for men (93,300) than for women (33,400) this quarter. The total number unemployed men was 2,289,100, and for women it was 1,848,400.

The unemployment rate for men was 17.62%, that is, 77 hundredths more than in the first quarter. The rate for women increased three tenths, standing at 18.31%. In the last three quarters, there has been a gradual approximation between the two rates.

Unemployment grew by 145,400 persons among Spaniards, and decreased by 18,700 persons among foreign nationals. The unemployment rate for Spaniards was 16% (75 hundredths higher than the previous quarter), while the rate for foreign nationals was 28% (four tenths lower).

Unemployment increased for practically all age groups this quarter. The number of unemployed persons decreased in women aged between 16 and 19 years old (8,100 fewer). The greatest increases in absolute values were in men aged between 25 and 54 years old, and those aged between 20 and 24 years old (with 29,500 and 28,200 more unemployed persons, respectively).

Regarding quarter-on-quarter evolution by sector<sup>2</sup>, unemployment in Construction decreased this quarter (41,900 fewer unemployed persons). Conversely, it increased in other sectors: Services registered 19,100 more unemployed persons, Industry registered 21,300, and Agriculture registered 24,000.

The number of unemployed persons who lost their jobs over one year ago increased by 117,000 persons, and decreased among those seeking their first job (12,800 fewer unemployed persons).

By interannual comparison, unemployment increased in all sectors. Thus, there were increases of 576,300 unemployed persons in Services, 323,000 in Construction, 211,000 in Industry and 73,600 in Agriculture.

Interannually, unemployment also increased in those seeking their first job (by 64,100) and in those who lost their job over a year ago (by 507,900).

The unemployment rate for the household reference person rose 43 hundredths, and stood at 14.9%. The rate for the spouse or partner increased 49 hundredths to 14.92%, and the rate for sons or daughters increased 1.39 points to 28.23%.

## **The number of households with all active members unemployed was 1,118,300.**

In the second quarter of 2009, the number of households with all active members working decreased by 75,700 to stand at 9,519,400. Over the last 12 months, the decrease was 1,034,600.

The number of households in which all active members were unemployed increased by 49,900 as compared with the previous quarter, and by 564,400 in the last 12 months. The total number of households in this situation was 1,118,300.

---

<sup>2</sup> According to the CNAE-2009 classification of activities

## Mobility as related to activity

Regarding quarter-on-quarter mobility as related to activity, the proportion of unemployed persons who had been employed three months prior was 20.62%, indicating a decrease of 6.67 points over the rate registered in the first quarter of 2009.

The percentage of employed persons who had also been employed the previous quarter was 93.02%, that is, 1.66 points lower than that recorded three months ago.

The percentage of persons employed the current quarter, and who had been unemployed in the first quarter of 2009, was 4.53%, or 1.35 points more than three months ago. The percentage of employed persons who had been inactive before was 2.45%, which was 31 hundredths more than in the first quarter.

The percentage of inactive persons who had been employed during the previous quarter decreased 58 hundredths to 3.55%.

60.30% of the unemployed persons this quarter had also been unemployed the previous quarter, indicating a 7.8 point increase.

92.51% of inactive persons had also been inactive three months prior. This percentage was 26 hundredths lower than that from the previous quarter.

## Results by Autonomous Community

The greatest increases in the number of **active persons** this quarter were observed in Illes Balears (33,500), and Comunitat Valenciana (27,300).

The sharpest decreases in the number of active persons were recorded in Cataluña (61,400), Galicia (13,400) and Canarias (13,000).

Regarding **employment**, in the second quarter of 2009, increases in the number of employed persons were observed in Illes Balears (36,400 more employed persons), and to a lesser extent, in Extremadura (7,400) and Castilla y León (4,100). The largest decreases in the number of employed persons were observed in Andalucía (52,200 fewer employed persons), Cataluña (40,600), Comunitat Valenciana (30,200) and Galicia (21,100).

In the last 12 months, no Autonomous Community presented an increase in the number of employed persons. The greatest decreases were in Cataluña (360,100 fewer employed persons), Andalucía (249,100), Comunitat Valenciana (200,600) and Comunidad de Madrid (118,600).

Regarding **unemployment**, the greatest increases this quarter were registered in Comunitat Valenciana (57,500), Andalucía (54,600), Castilla-La Mancha (14,600) and Principado de Asturias (9,900). In turn, the largest decreases in the number of unemployed persons this second quarter were in Cataluña (20,800 fewer unemployed persons), Extremadura (8,300) and Canarias (7,500).

In terms of interannual variation, all of the Autonomous Communities experienced increases in the number of unemployed persons. The greatest increases corresponded to Andalucía (380,700 more unemployed persons in the last 12 months), Cataluña (309,000), Comunitat Valenciana (255,400), Comunidad de Madrid (168,800) and Canarias (107,000).

País Vasco (10.52%) and Cantabria (11.71%) were the Autonomous Communities with the lowest **unemployment rates** in the second quarter of 2009. The highest rates were recorded in Canarias (25.73%), Andalucía (25.41%) and Comunitat Valenciana (21.22%).

The lowest female unemployment rates were observed in País Vasco (10.8%), Aragón (12.39%) and La Rioja (12.45%).

In Región de Murcia, Illes Balears, Cataluña, Aragón, Comunidad de Madrid and La Rioja, the female unemployment rate was lower than the male rate this quarter.

Among the Autonomous Communities in which the female rate was higher than the male rate, worth noting were Extremadura (almost eight points higher), Castilla-La Mancha (4.58 points more), Castilla y León (4.28) and Andalucía (3.56).

The Autonomous Communities with the highest **activity rates** in the second quarter of 2009 were Illes Balears (66.77%), Comunidad de Madrid (65.05%) and Cataluña (62.39%).

The lowest activity rates this quarter were recorded in Principado de Asturias (52.18%), Extremadura (53.95%) and Castilla y León (54.78%).

## Results by province

As of third quarter <sup>3</sup> of 2008, the provincial results that were previously published in this Press Release henceforth appear on the INE website, together with the results tables customarily published.

This EAPS information (Summary of provincial results) may be accessed via the following link:

<http://www.ine.es/daco/daco42/epc/epcpro4211.pdf>

All of the provincial information from this survey may be accessed via the following links:

- In the INEbase database  
<http://www.ine.es/jaxiBD/menu.do?L=0&divi=EPA&his=0&type=db>
- In the TEMPUS database  
<http://www.ine.es/menu/redir/GSTConsul.shtml?divi=EPA>

---

For further information see **INEbase-[www.ine.es](http://www.ine.es)** All press releases at: **[www.ine.es/prensa/prensa\\_en.htm](http://www.ine.es/prensa/prensa_en.htm)**

**Press office:** Telephone numbers: 91 583 93 63 / 94 08 – Fax: 91 583 90 87 - [gprensa@ine.es](mailto:gprensa@ine.es)  
**Information Area:** Telephone number: 91 583 91 00 – Fax: 91 583 91 58 – [www.ine.es/infoine](http://www.ine.es/infoine)

---

---

<sup>3</sup> By virtue of the *Multilateral Labour Agreement between the National Statistics Institute (INE) and the central statistics bodies of the Autonomous Communities towards the development of cooperation in statistics issues*



## Methodological note

### General characteristics

The Economically Active Population Survey is a continuous sample-based study, aimed at family dwellings, and which has been conducted since 1964.

3,588 census sections are chosen for this Survey, among the more than 30,000 into which Spain is divided. On average, 18 households are surveyed in each of them, except in the provinces of Barcelona, Madrid, Sevilla, Valencia and Zaragoza, where the number of interviews is 22. Thus, the sample size is approximately 65,000 dwellings, providing information on some 180,000 persons. This data is collected through personal and telephone interviews, conducted by National Statistics Institute workers, attached to the provincial delegations thereof. The information is carefully filtered and processed using IT media. Results are obtained within the month following the end of the reference quarter for the data.

### Main definitions

**Active persons:** persons aged 16 and over who, during the reference week (the week prior to that when the interview is held), supplied labour for the production of economic goods and services or were available to do so and carried out actions to incorporate themselves into said production. They are divided into employed and unemployed persons.

**Employed persons:** persons aged 16 and over who, during the reference week, worked for at least one hour, in exchange for payment (salary, wage, business benefit, etcetera) in cash or in kind. Persons who, having a job, had been temporarily absent from it due to illnesses, vacation, etcetera, are also employed persons.

Employed persons are classified, considering their professional status, as non-wage earners (employers, businesspersons without wage earners, and independent workers, cooperative members, family assistance) and wage earners (public or private).

Considering the length of the working day, employed persons are classified as full-time and part-time employed persons. The usual working week may not be shorter than 30 hours in the first case, nor exceed 35 hours in the second.

Wage earners are classified as permanent and temporary. For the latter, the end of their contract or work relationship is set by means of objective conditions, such as the expiration of a certain period of time, the completion of a specific task, etcetera.

A significant category within employment is that of **time-related underemployment**, defined in the 16th International Labour Statisticians Conference (Geneva, 1998). The EAPS considers persons suffering time-related underemployment as employed persons who would like to work more hours, who are available to work more hours and whose effective working hours in the reference week are less than the number of hours usually worked by employed persons working full-time in the same branch of activity as that in which the underemployed person performs his/her main job.

**Unemployed persons:** persons aged 16 and over who, during the reference week, were jobless, available for work, and actively looking for a job. Persons who might have already

found a job and are waiting to start, are also considered as unemployed, provided that they verify the first two conditions.

According to European Commission Regulation 1897/2000, the following are considered as active search methods in the four weeks prior to the interview:

- Being in contact with a public employment office for the purpose of finding work, whatever part they play in the initiative (the renewal of registration due to purely administrative reasons does not constitute active planning).
- Being in contact with a private office (temporary employment office, specialised hiring agency, ...) with the objective of finding work.
- Having sent an application directly to employers.
- Having searched via personal relations and trade unions, ....
- Having advertised oneself or responded to newspaper advertisements.
- Having studied employment offers.
- Having taken part in a test, public exam or interview in the framework of a contracting procedure.
- Having looked for land, premises or material.
- Having taken steps to obtain permits, licences or financial resources.

**Inactive persons:** persons aged 16 and over not included in any of the above categories.



## Economically Active Population Survey Second Quarter 2009

### National results

(Continues)

	Current quarter	Variation on previous quarter		Variation on same quarter, previous year	
		Difference	Percentage	Difference	Percentage
1. Population aged 16 years and over by sex and labour status					
BOTH SEXES					
Population aged 16 years and over	38.432,0	23,4	0,06	270,5	0,71
Active population	23.082,4	-19,1	-0,08	275,7	1,21
- Employed	18.945,0	-145,8	-0,76	-1.480,2	-7,25
- Unemployed	4.137,5	126,7	3,16	1.755,9	73,73
Inactive	15.349,6	42,5	0,28	-5,2	-0,03
Activity rate	60,06	-0,09	-	0,30	-
Unemployment rate	17,92	0,56	-	7,48	-
Population aged 16 to 64 years	30.921,2	-5,3	-0,02	160,8	0,52
Activity rate (16-64)	74,17	-0,03	-	0,54	-
Unemployment rate (16-64)	18,03	0,57	-	7,53	-
Employment rate (16-64)	60,80	-0,44	-	-5,11	-
MALES					
Population aged 16 years and over	18.855,6	7,1	0,04	126,1	0,67
Active population	12.990,0	-36,7	-0,28	-52,3	-0,40
- Employed	10.700,9	-130,0	-1,20	-1.158,5	-9,77
- Unemployed	2.289,1	93,3	4,25	1.106,2	93,52
Inactive	5.865,6	43,8	0,75	178,4	3,14
Activity rate	68,89	-0,22	-	-0,74	-
Unemployment rate	17,62	0,77	-	8,55	-
Population aged 16 to 64 years	15.640,5	-6,3	-0,04	75,0	0,48
Activity rate (16-64)	82,49	-0,19	-	-0,65	-
Unemployment rate (16-64)	17,73	0,77	-	8,61	-
Employment rate (16-64)	67,86	-0,79	-	-7,69	-
FEMALES					
Population aged 16 years and over	19.576,5	16,3	0,08	144,4	0,74
Active population	10.092,5	17,7	0,18	328,1	3,36
- Employed	8.244,1	-15,8	-0,19	-321,6	-3,76
- Unemployed	1.848,4	33,4	1,84	649,7	54,20
Inactive	9.484,0	-1,3	-0,01	-183,6	-1,90
Activity rate	51,55	0,05	-	1,30	-
Unemployment rate	18,31	0,30	-	6,04	-
Population aged 16 to 64 years	15.280,7	1,0	0,01	85,8	0,56
Activity rate (16-64)	65,65	0,13	-	1,76	-
Unemployment rate (16-64)	18,41	0,30	-	6,09	-
Employment rate (16-64)	53,56	-0,09	-	-2,45	-

### 2. Spanish population<sup>1</sup> aged 16 years and over by labour status

<b>SPANISH POPULATION AGED 16 YEARS AND OVER</b>	33.644,9	12,2	0,04	75,8	0,23
Active population	19.371,8	-5,2	-0,03	88,2	0,46
- Employed	16.273,2	-150,6	-0,92	-1.208,9	-6,91
- Unemployed	3.098,6	145,4	4,92	1.297,1	72,00
Inactive	14.273,1	17,3	0,12	-12,4	-0,09
Activity rate	57,58	-0,04	-	0,13	-
Unemployment rate	16,00	0,75	-	6,65	-

<sup>1</sup> including dual nationality

2009 July 24th

## National results

(Continuation)

	Current quarter	Variation on previous quarter		Variation on same quarter, previous year	
		Difference	Percentage	Difference	Percentage
<b>3. Foreign population aged 16 years and over by labour status</b>					
FOREIGN POPULATION AGED 16 YEARS AND OVER	4.787,1	11,3	0,24	194,7	4,24
Active population	3.710,6	-13,9	-0,37	187,5	5,32
- Employed	2.671,8	4,8	0,18	-271,3	-9,22
- Unemployed	1.038,9	-18,7	-1,77	458,8	79,11
Inactive	1.076,5	25,2	2,39	7,2	0,67
Activity rate	77,51	-0,47	-	0,80	-
Unemployment rate	28,00	-0,40	-	11,53	-

## 4. Employed by sex, age group and economic sector

<b>BOTH SEXES</b>	18.945,0	-145,8	-0,76	-1.480,2	-7,25
16 to 19 years	203,9	-9,9	-4,64	-114,5	-35,97
20 to 24 years	1.182,6	-62,7	-5,03	-327,8	-21,70
25 to 29 years	2.364,5	-53,0	-2,19	-376,4	-13,73
30 to 34 years	2.956,2	-41,2	-1,37	-266,5	-8,27
35 to 39 years	2.866,9	24,6	0,87	-133,5	-4,45
40 to 44 years	2.661,1	-23,5	-0,88	-132,1	-4,73
45 to 49 years	2.419,5	13,5	0,56	-69,2	-2,78
50 to 54 years	1.941,7	6,2	0,32	-22,3	-1,13
55 and over	2.348,6	0,1	0,00	-37,9	-1,59
<b>MALES</b>	10.700,9	-130,0	-1,20	-1.158,5	-9,77
16 to 19 years	122,3	-7,5	-5,75	-77,7	-38,85
20 to 24 years	622,3	-44,2	-6,64	-206,1	-24,88
25 to 29 years	1.237,0	-26,5	-2,09	-241,9	-16,36
30 to 34 years	1.638,5	-25,4	-1,52	-190,3	-10,40
35 to 39 years	1.606,6	0,6	0,04	-140,6	-8,05
40 to 44 years	1.499,7	-14,6	-0,97	-116,9	-7,23
45 to 49 years	1.361,9	7,8	0,58	-70,5	-4,92
50 to 54 years	1.149,6	0,2	0,02	-29,3	-2,48
55 and over	1.463,0	-20,4	-1,38	-85,4	-5,51
<b>FEMALES</b>	8.244,1	-15,8	-0,19	-321,6	-3,76
16 to 19 years	81,6	-2,5	-2,92	-36,8	-31,10
20 to 24 years	560,3	-18,5	-3,19	-121,8	-17,85
25 to 29 years	1.127,6	-26,5	-2,30	-134,5	-10,66
30 to 34 years	1.317,7	-15,8	-1,19	-76,2	-5,47
35 to 39 years	1.260,3	24,1	1,95	7,1	0,57
40 to 44 years	1.161,4	-8,9	-0,76	-15,2	-1,29
45 to 49 years	1.057,6	5,8	0,55	1,2	0,12
50 to 54 years	792,1	6,0	0,76	7,0	0,89
55 and over	885,6	20,5	2,38	47,4	5,66
<b>TOTAL EMPLOYED</b>	18.945,0	-145,8	-0,76	-1.480,2	-7,25
Agriculture	786,6	-51,1	-6,11	-34,1	-4,16
Industry	2.799,4	-100,8	-3,48	-445,0	-13,72
Construction	1.922,1	-55,9	-2,83	-627,4	-24,61
Services	13.436,9	62,0	0,46	-373,7	-2,71

## National results

(Continuation)

	Current quarter	Variation on previous quarter		Variation on same quarter, previous year	
		Difference	Percentage	Difference	Percentage

### 5. Employed by professional status, type of contract and working hours

TOTAL EMPLOYED	18.945,0	-145,8	-0,76	-1.480,2	-7,25
Self-employed workers	3.196,0	-44,6	-1,38	-366,0	-10,28
- Employers	1.080,1	-20,2	-1,84	-95,3	-8,11
- Independent workers	1.918,7	-5,9	-0,31	-205,8	-9,69
- Cooperatives members	30,1	-1,4	-4,39	-33,8	-52,89
- Family workers	167,1	-17,0	-9,25	-31,1	-15,71
Employees	15.736,8	-106,2	-0,67	-1.116,2	-6,62
- With a permanent job	11.765,3	-52,0	-0,44	-135,2	-1,14
- With a temporary job	3.971,5	-54,2	-1,35	-981,0	-19,81
Others	12,2	5,0	69,61	2,0	20,23
FULL-TIME EMPLOYED	16.494,4	-173,5	-1,04	-1.481,5	-8,24
Males	10.188,5	-141,7	-1,37	-1.176,6	-10,35
Females	6.305,9	-31,7	-0,50	-304,9	-4,61
PART-TIME EMPLOYED	2.450,6	27,7	1,14	1,3	0,05
Males	512,3	11,7	2,33	18,1	3,65
Females	1.938,2	16,0	0,83	-16,7	-0,85

### 6. Unemployed by sex, age group, and economic sector

BOTH SEXES	4.137,5	126,7	3,16	1.755,9	73,73
16 to 19 years	262,8	7,0	2,72	40,3	18,12
20 to 24 years	592,4	39,7	7,18	240,9	68,56
25 to 54 years	2.973,2	45,7	1,56	1.330,1	80,96
55 and over	309,1	34,4	12,51	144,5	87,84
MALES	2.289,1	93,3	4,25	1.106,2	93,52
16 to 19 years	160,8	15,1	10,36	51,3	46,80
20 to 24 years	334,1	28,2	9,22	149,6	81,10
25 to 54 years	1.617,1	29,5	1,86	824,5	104,01
55 and over	177,1	20,5	13,07	80,9	84,05
FEMALES	1.848,4	33,4	1,84	649,7	54,20
16 to 19 years	102,0	-8,1	-7,37	-10,9	-9,69
20 to 24 years	258,3	11,5	4,66	91,3	54,69
25 to 54 years	1.356,1	16,2	1,21	505,7	59,46
55 and over	132,0	13,9	11,77	63,7	93,17
TOTAL UNEMPLOYED	4.137,5	126,7	3,16	1.755,9	73,73
Agriculture	194,5	24,0	14,08	73,6	60,93
Industry	394,4	21,3	5,70	211,0	115,01
Construction	701,8	-41,9	-5,63	323,0	85,25
Services	1.465,6	19,1	1,32	576,3	64,80
Lost their job more than 1 year ago	1.094,6	117,0	11,97	507,9	86,59
First job seekers	286,6	-12,8	-4,29	64,1	28,83

## National results

(Conclusion)

	Current quarter	Variation on previous quarter		Variation on same quarter, previous year	
		Difference	Percentage	Difference	Percentage

### 7. Unemployment rate by relationship with the reference person

TOTAL	17,92	0,56	3,25	7,48	71,66
Reference person	14,90	0,43	2,98	7,04	89,56
Spouse or partner	14,92	0,49	3,43	5,86	64,62
Child	28,23	1,39	5,19	11,53	69,07
Other relatives	25,30	0,64	2,58	9,11	56,29
Unrelated persons	16,33	-2,74	-14,36	4,70	40,38

### 8. Household data

TOTAL HOUSEHOLDS	17.051,9	68,3	0,40	357,2	2,14
Households with at least one active member	12.889,3	36,0	0,28	249,0	1,97
- All member employed	9.519,4	-75,7	-0,79	-1.034,6	-9,80
- All member unemployed	1.118,3	49,9	4,67	564,4	101,90
Households without any active population	4.162,6	32,3	0,78	108,1	2,67

## Mobility according to activity in current and previous quarter

Classification in previous quarter	Classification in current quarter			
	Total	Employed	Unemployed	Inactive
<b>BOTH SEXES</b>				
Total	100,00	100,00	100,00	100,00
Employed	49,34	93,02	20,62	3,55
Unemployed	9,96	4,53	60,30	3,94
Inactive	40,70	2,45	19,08	92,51
<b>MALES</b>				
Total	100,00	100,00	100,00	100,00
Employed	57,22	93,72	23,25	3,88
Unemployed	10,95	4,65	63,75	3,65
Inactive	31,83	1,62	13,00	92,48
<b>FEMALES</b>				
Total	100,00	100,00	100,00	100,00
Employed	41,82	92,11	17,56	3,35
Unemployed	9,02	4,36	56,28	4,12
Inactive	49,17	3,53	26,16	92,53

Grossing up factors of current quarter (forward analysis)

## Results by Autonomous Communities

(Continues)

	Current quarter	Variation on previous quarter		Variation on same quarter, previous year	
		Difference	Percentage	Difference	Percentage
<b>1. Population aged 16 years and over</b>					
TOTAL	38.432,0	23,4	0,06	270,5	0,71
Andalucía	6.712,1	8,7	0,13	62,3	0,94
Aragón	1.118,6	1,5	0,13	9,0	0,81
Asturias (Principado de)	933,6	-1,2	-0,13	-2,8	-0,30
Balears (Illes)	889,5	1,8	0,21	15,6	1,78
Canarias	1.733,1	4,5	0,26	25,2	1,48
Cantabria	495,4	0,3	0,06	2,8	0,57
Castilla y León	2.166,0	-0,7	-0,03	2,2	0,10
Castilla-La Mancha	1.696,7	5,6	0,33	31,0	1,86
Cataluña	6.077,2	-6,3	-0,10	1,7	0,03
Comunitat Valenciana	4.193,0	9,1	0,22	57,2	1,38
Extremadura	904,2	0,4	0,05	2,2	0,25
Galicia	2.386,1	-1,4	-0,06	-1,3	-0,05
Madrid (Comunidad de)	5.235,5	-0,7	-0,01	48,5	0,94
Murcia (Región de)	1.177,6	2,8	0,24	17,5	1,51
Navarra (Comunidad Foral de)	511,2	0,6	0,13	4,7	0,92
País Vasco	1.825,6	-1,8	-0,10	-7,7	-0,42
Rioja (La)	266,8	0,0	0,00	1,6	0,61
Ceuta	56,9	0,0	-0,02	0,2	0,42
Melilla	52,9	0,1	0,20	0,6	1,19

## 2. Active population

TOTAL	23.082,4	-19,1	-0,08	275,7	1,21
Andalucía	3.930,0	2,4	0,06	131,6	3,46
Aragón	658,2	-3,3	-0,49	-1,6	-0,24
Asturias (Principado de)	487,2	0,1	0,01	-6,9	-1,40
Balears (Illes)	593,9	33,5	5,97	20,4	3,56
Canarias	1.061,2	-13,0	-1,21	23,1	2,22
Cantabria	282,0	-1,8	-0,62	2,3	0,82
Castilla y León	1.186,5	9,1	0,78	12,8	1,09
Castilla-La Mancha	980,1	6,3	0,65	25,2	2,63
Cataluña	3.791,5	-61,4	-1,59	-51,1	-1,33
Comunitat Valenciana	2.585,7	27,3	1,07	54,8	2,17
Extremadura	487,8	-0,9	-0,18	4,1	0,85
Galicia	1.317,8	-13,4	-1,00	7,8	0,60
Madrid (Comunidad de)	3.405,5	-4,4	-0,13	50,2	1,50
Murcia (Región de)	733,0	2,6	0,36	13,9	1,94
Navarra (Comunidad Foral de)	313,5	2,5	0,81	4,1	1,32
País Vasco	1.046,3	-4,5	-0,43	-18,5	-1,73
Rioja (La)	160,9	0,4	0,27	2,1	1,34
Ceuta	32,4	-1,8	-5,19	0,7	2,35
Melilla	29,0	1,1	3,98	0,6	1,99

\* Data below 5000 are subject to strong variations, due to sampling error

## Results by Autonomous Communities

(Conclusion)

	Current quarter	Variation on previous quarter		Variation on same quarter, previous year	
		Difference	Percentage	Difference	Percentage
<b>3. Employed</b>					
TOTAL	18.945,0	-145,8	-0,76	-1.480,2	-7,25
Andalucía	2.931,3	-52,2	-1,75	-249,1	-7,83
Aragón	572,6	-3,0	-0,52	-42,5	-6,91
Asturias (Principado de)	418,8	-9,8	-2,29	-36,5	-8,02
Balears (Illes)	486,1	36,4	8,09	-39,3	-7,48
Canarias	788,1	-5,5	-0,70	-83,9	-9,63
Cantabria	249,0	0,5	0,19	-11,0	-4,25
Castilla y León	1.018,7	4,1	0,40	-46,0	-4,32
Castilla-La Mancha	788,8	-8,3	-1,04	-66,1	-7,74
Cataluña	3.189,6	-40,6	-1,26	-360,1	-10,14
Comunitat Valenciana	2.037,0	-30,2	-1,46	-200,6	-8,97
Extremadura	389,8	7,4	1,94	-26,8	-6,44
Galicia	1.147,4	-21,1	-1,81	-53,4	-4,45
Madrid (Comunidad de)	2.942,2	-7,8	-0,26	-118,6	-3,87
Murcia (Región de)	585,2	-3,8	-0,64	-52,4	-8,22
Navarra (Comunidad Foral de)	275,1	-3,4	-1,23	-16,9	-5,77
País Vasco	936,3	-6,0	-0,63	-69,2	-6,88
Rioja (La)	140,4	-1,6	-1,14	-7,6	-5,11
Ceuta	27,3	-1,4	-5,03	1,6	6,10
Melilla	21,4	0,6	2,82	-1,6	-7,05

## 4. Unemployed

TOTAL	4.137,5	126,7	3,16	1.755,9	73,73
Andalucía	998,7	54,6	5,78	380,7	61,60
Aragón	85,6	-0,3	-0,32	40,9	91,48
Asturias (Principado de)	68,4	9,9	16,91	29,6	76,51
Balears (Illes)	107,8	-2,9	-2,66	59,7	124,21
Canarias	273,1	-7,5	-2,67	107,0	64,44
Cantabria	33,0	-2,2	-6,34	13,3	67,82
Castilla y León	167,8	5,0	3,09	58,8	53,97
Castilla-La Mancha	191,3	14,6	8,24	91,3	91,23
Cataluña	601,9	-20,8	-3,33	309,0	105,48
Comunitat Valenciana	548,7	57,5	11,71	255,4	87,11
Extremadura	98,0	-8,3	-7,80	31,0	46,21
Galicia	170,4	7,7	4,75	61,3	56,14
Madrid (Comunidad de)	463,3	3,4	0,74	168,8	57,30
Murcia (Región de)	147,8	6,4	4,49	66,3	81,38
Navarra (Comunidad Foral de)	38,3	5,9	18,37	20,9	120,39
País Vasco	110,0	1,4	1,33	50,7	85,54
Rioja (La)	20,5	2,1	11,20	9,7	89,55
Ceuta	5,1	-0,3	-6,06	-0,8	-13,89
Melilla	7,6	0,5	7,38	2,2	40,44

\* Data below 5,000 are subject to strong variations, due to sampling error

## Results by Autonomous Communities and Provinces

(Absolute figures in thousands and rates in percentage)

	Both sexes				Males				Females			
	Employed	Unemployed	Activity rate	Unem. rate	Employed	Unemployed	Activity rate	Unem. Rate	Employed	Unemployed	Activity rate	Unem. Rate
<b>TOTAL</b>	18.945,0	4.137,5	60,06	17,92	10.700,9	2.289,1	68,89	17,62	8.244,1	1.848,4	51,55	18,31
<b>Andalucía</b>	2.931,3	998,7	58,55	25,41	1.722,2	541,0	68,56	23,90	1.209,1	457,7	48,86	27,46
<b>Aragón</b>	572,6	85,6	58,84	13,00	325,0	50,6	67,45	13,47	247,6	35,0	50,31	12,39
<b>Asturias</b>	418,8	68,4	52,18	14,04	229,2	34,2	59,46	12,98	189,6	34,2	45,61	15,27
<b>Balears (Illes)</b>	486,1	107,8	66,77	18,15	263,3	64,1	73,63	19,59	222,8	43,7	59,92	16,39
<b>Canarias</b>	788,1	273,1	61,23	25,73	456,7	150,4	70,43	24,77	331,4	122,7	52,13	27,02
<b>Cantabria</b>	249,0	33,0	56,91	11,71	140,9	16,9	65,49	10,69	108,0	16,1	48,79	12,99
<b>Castilla y Leon</b>	1.018,7	167,8	54,78	14,14	597,0	83,9	63,66	12,32	421,7	83,9	46,12	16,60
<b>Castilla-La Mancha</b>	788,8	191,3	57,77	19,52	482,4	103,6	68,59	17,68	306,4	87,7	46,79	22,26
<b>Cataluña</b>	3.189,6	601,9	62,39	15,88	1.756,2	355,8	70,82	16,85	1.433,4	246,2	54,26	14,66
<b>Comunitat Valenciana</b>	2.037,0	548,7	61,67	21,22	1.149,3	304,8	70,02	20,96	887,7	243,9	53,47	21,55
<b>Extremadura</b>	389,8	98,0	53,95	20,09	236,8	47,9	63,81	16,81	153,0	50,1	44,34	24,68
<b>Galicia</b>	1.147,4	170,4	55,23	12,93	622,5	87,1	62,23	12,27	524,9	83,3	48,81	13,70
<b>Madrid (Comunid.de)</b>	2.942,2	463,3	65,05	13,61	1.589,9	260,6	73,50	14,08	1.352,3	202,8	57,22	13,04
<b>Murcia (Región de)</b>	585,2	147,8	62,25	20,16	337,9	90,8	72,12	21,19	247,3	57,0	52,19	18,72
<b>Navarra (C. Foral de)</b>	275,1	38,3	61,32	12,23	158,2	19,7	70,03	11,09	116,9	18,6	52,70	13,72
<b>País Vasco</b>	936,3	110,0	57,31	10,52	520,4	59,7	65,60	10,29	415,9	50,4	49,53	10,80
<b>Rioja (La)</b>	140,4	20,5	60,32	12,74	81,9	12,2	70,32	12,96	58,5	8,3	50,27	12,45
<b>Ceuta</b>	27,3	5,1	56,90	15,78	17,9	2,2	69,25	10,77	9,4	3,0	44,12	23,93
<b>Melilla</b>	21,4	7,6	54,82	26,22	13,3	3,7	68,28	21,97	8,1	3,9	42,87	32,23

\* Data below 5,000 are subject to strong variations, due to sampling errors

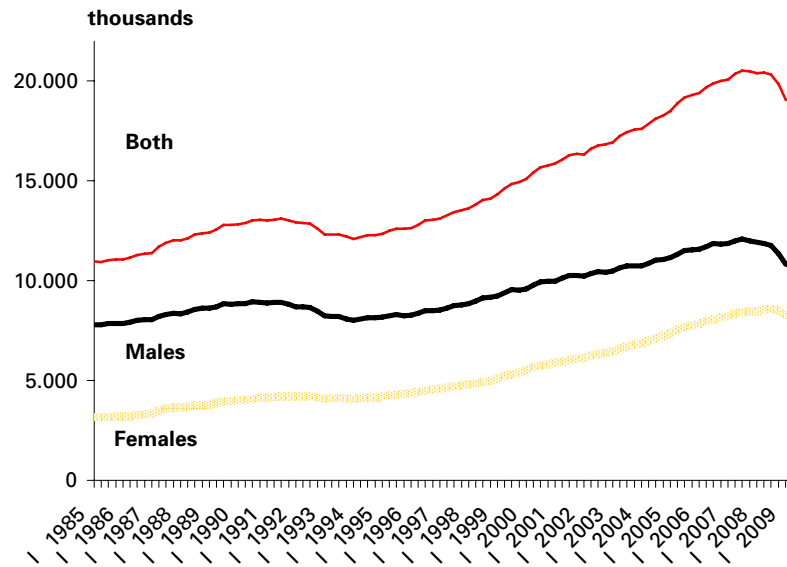
EA PS - (ANNEXE TO THE TABLES) Second Quarter 2009 (7/7)



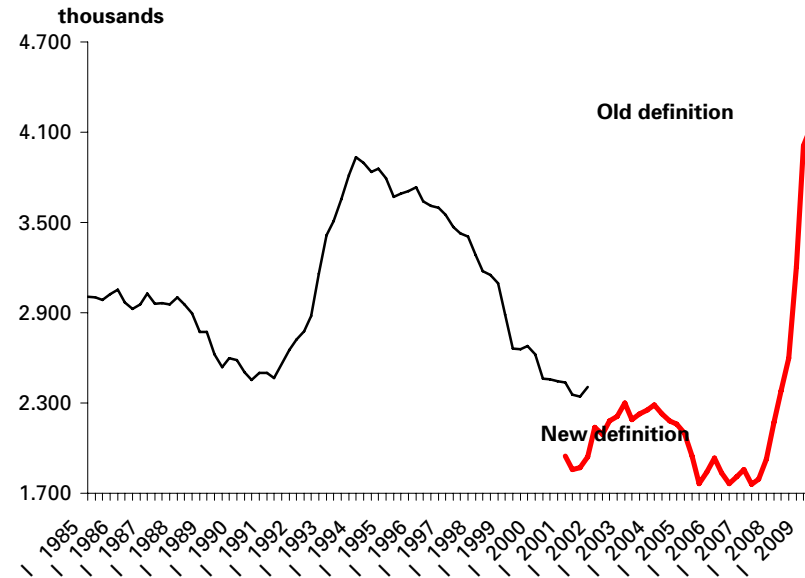
# Employed and unemployed by sex

APS Second Quarter 2009

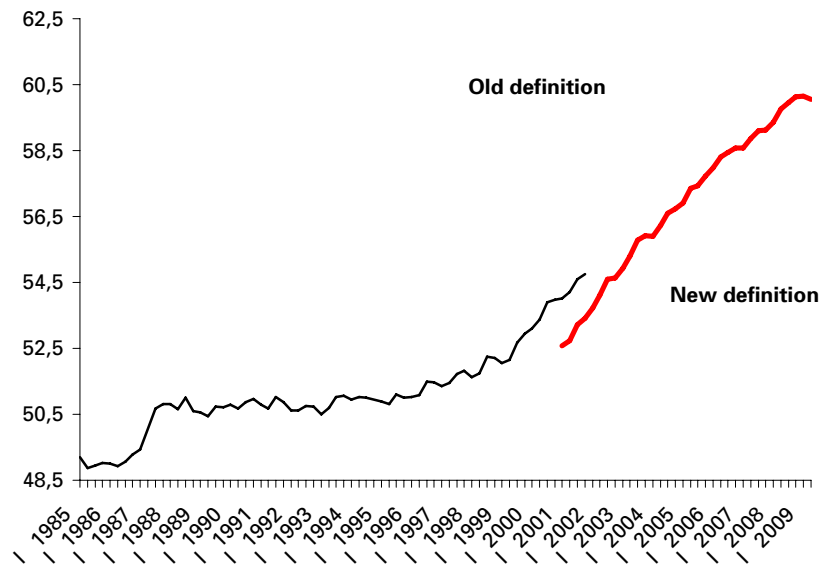
## Employment



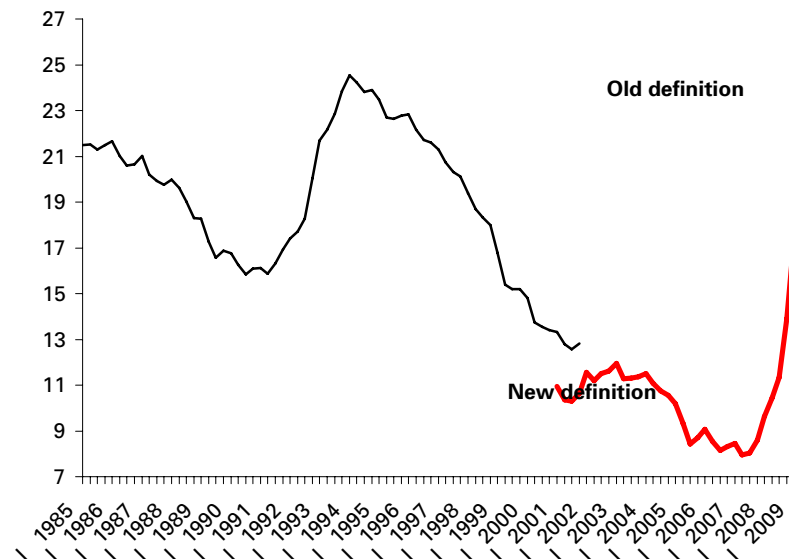
## Unemployment



## Activity rate

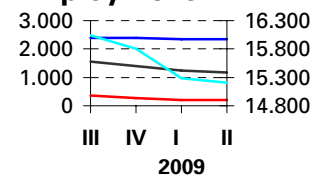


## Unemployment rate

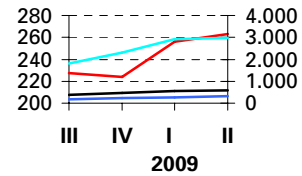


## Employed and Unemployed APS Second Quarter

### Employment

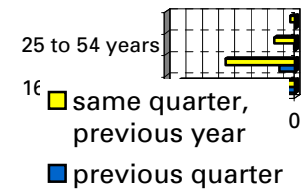


### Unemployment

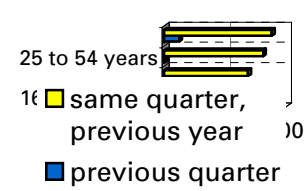


## variation percentages over the previous quarter

### Employment

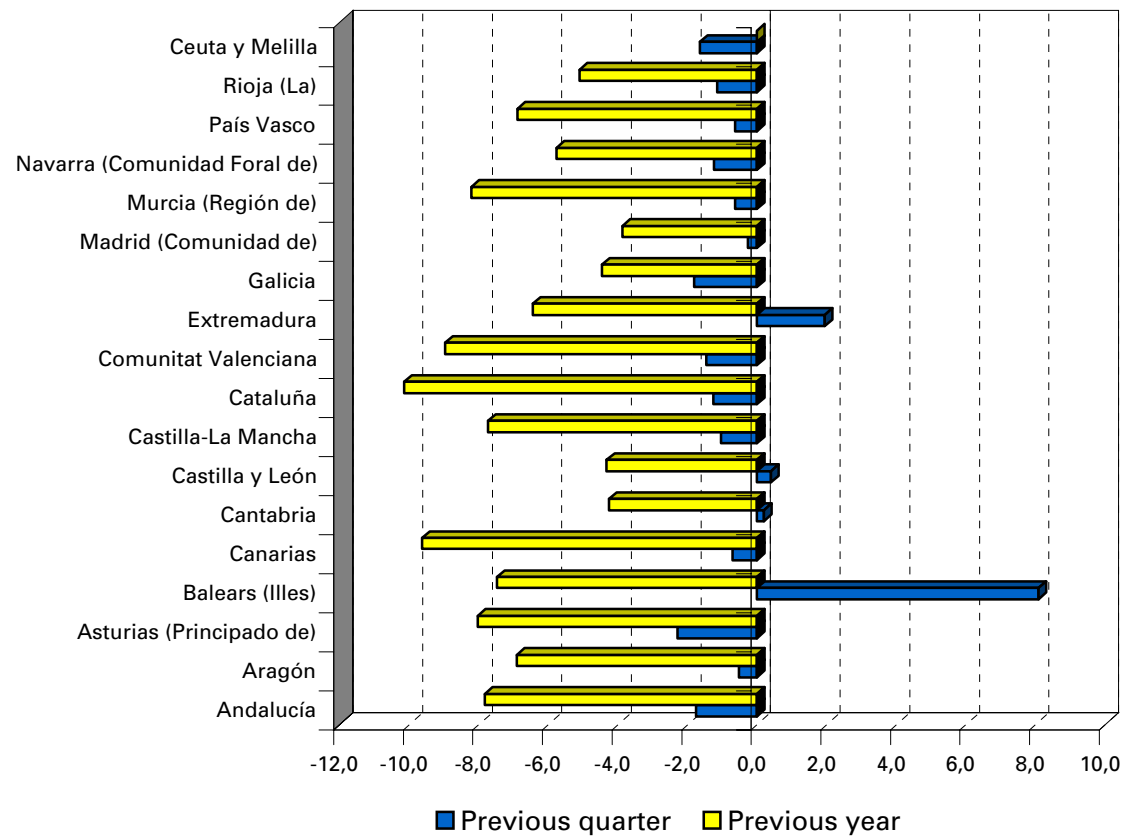


### Unemployment



# Employment variation percentages over the previous quarte and over the same quarter of the previous year

## Second Quarter 2009



## Unemployment rate

(Spain = 17,92 )

