

Economically Active Population Survey (EAPS)

Second quarter of 2012

Main results

- Employment in the second quarter of 2012 registers a decrease of 15,900 persons, reaching a total of 17,417,300 employed persons. The quarter on quarter employment variation rate stands at -0.09% .
- The economically active population increases by 37,600 persons this quarter. The number of unemployed increases by 53,500 persons, standing at 5,693,500.
- The unemployment rate grows 19 hundredths, standing at 24.63%. In turn, the activity rate rises at 60.08%. This quarter, the loss of employment increases 70,000 persons among men, whilst decreases in 16,400 among women.
- The employment increases 14,600 among women, whilst decreases 30,600 among men.
- Employment increases in 42,800 persons in *Services* and in 6,200 in *Construction*. The employed persons decreased 44,000 in *Agriculture* and 21,000 in *Industry*.
- Wage-earners with a permanent contract increase by 4,400, and wage-earners with a temporary contract do so by 18,300.
- The number of households with all of their active members unemployed increases by 9,300 this quarter, standing at 1,737,600.
- By Autonomous Community, the unemployment rate fluctuates between 14.56% in País Vasco and 33.92% in Andalucía. The activity rate fluctuates between 52.50%, recorded in Principado de Asturias, and 67.54%, registered in Illes Balears.
- The Autonomous Communities that most increases their employment are: Illes Balears (60,400 persons), Comunidad de Madrid (7,500), Región de Murcia (6,800), Castilla y León (5,600) and Comunitat Valenciana (4,900). In contrast, the Autonomous Communities that registered the greatest decreases in employment this quarter were: Andalucía (23,300 fewer employed persons), Castilla – La Mancha (19,500 fewer), Cataluña (19,100), Galicia (16,800) and Canarias (12,400).
- The greatest decreases in unemployment persons are registered in Illes Balears and Cataluña. In turn, Andalucía, Castilla – La Mancha, País Vasco, Comunidad de Madrid and Galicia registered the greatest increases in the number of unemployed persons.

Economically active population and activity rate

The economically active population experienced a decrease of 37,600 persons in the second quarter of 2012. The number of economically active persons stood at 23,110,400 persons. In interannual terms, the number of economically active persons decreased by 26,400 persons.

The general activity rate increased 14 hundredths, up to 60.08%. The female activity rate remained at 53.35%, while the male rate increased 29 hundredths and reached 67.15%.

The general activity rate of Spaniards rose 27 hundredths, while the rate of foreign nationals decreased 73 hundredths, this quarter. The distance between the activity rates of Spaniards and foreign nationals exceeded 17 points, in favour of the latter, this circumstance being explained by the different age structures of both populations.

Employment

The number of employed persons decreased by 15,900 persons in the second quarter of 2012, standing at 17,417,300. The interannual employment variation rate stood at -0.09%.

The drop in employment affected men (30,600 employment fewer) exceeds the increase in the occupation of women (14,600 employment fewer). By nationality, the number of employed foreign nationals increased by 9,100, while that of Spaniards decreased by 25,000.

By age, employment grew in persons older than 54 years old in 49,900 persons. The greatest decreases were observed in men between 40-44 and 25-29 years old (23,700 and 21,900 fewer respectively), Among women, the group of 20-24 years old experienced the greatest drop (11,500).

The number of employed persons increased in *Services*, registered 42,800 more employed persons and *Construction* with 6,200. The employment decreased in *Industry* (21,000 fewer) and *Agriculture* (44,000 fewer).

The increase in the number of employers this second quarter (15,000 more employers) did not compensate for the decrease in independent workers (12,900 fewer) and in the remaining self-employed workers (2,600).

The number of wage earners decreased by 13,900. Those with a permanent contract decreased by 4,400, while the number of wage earners with temporary contracts decreased 18,300. The temporary employment rate decreased one tenth, standing at 23.66%.

Part-time employment increased by 94,300 persons this quarter, whilst full-time employed persons decreased by 110,300. The percentage of persons working part-time increased more than half point, up to 14.93%.

The interannual variation of employment was -4.48%, almost nine tenths lower than that registered the previous quarter. Employment experienced a decrease of 885,800 persons in one year, 895,200 of whom were wage-earners and 10,100 of whom were self-employed workers.

The drop in the interannual employment among men (570,100 fewer) were higher than those women (315,700).

Unemployment and unemployment rate

The increase in unemployment was 53,500 this quarter, standing at 5,693,100. In the last 12 months, the total figure of unemployed persons increased by 859,400 persons.

The unemployment rate rose 19 hundredths, as compared with the first quarter of 2012, standing at 24.63%.

The male unemployment rate increased 48 hundredths, up to 24.57%, whilst the female rate decreased 15 hundredths, and stood at 24.71%. The composition of unemployment observed since the year 2008 remained, with relatively little distance between the male and female rates, and a greater number of unemployed men than unemployed women.

By nationality, the unemployment increased 113,300 among Spaniards and decreased 59,700 among foreign nationals. The unemployment rate for the foreign population was 35.76%, 13 points higher than that of persons with Spanish nationality.

Unemployment decreased in *Construction* (40,500 fewer) and in *Services* (84,500 fewer). In contrast, unemployment increased in *Industry* (23,500 more) and in *Agriculture* (11,400 more). Unemployment also increased among those persons who lost their job over a year ago (107,400 more), and among those seeking their first job (by 36,100).

The number of unemployed persons increased in all sectors in the last 12 months.

Mobility as related to economic activity

The percentage of employed persons who were inactive in the previous quarter is now 4.91%, nine tenths more than that recorded in the first quarter of 2012.

The proportion of unemployed persons who were employed three months ago decreased more than three points, up to 14.09%. The percentage of unemployed persons for the second quarter of 2012 who were already unemployed three months prior increased 2.69 points, up to 70.20%. The percentage of unemployed persons who were inactive three months ago decreased 1.25 points, up to 15.71%.

Households

The number of households in which all active members were unemployed experienced an increase of 9,300, as compared with the previous quarter, standing at 1,737,600. In parallel, the number of households in which all of the active members were employed decreased by 13,200, up to 8,580,500.

In an interannual comparison, the number of households in which all active persons were unemployed increased by 370,200, and the number of those in which all active members were employed decreased by 580,600.

Results by Autonomous Community

The incorporation of economically active persons in the labour market was especially significant this quarter in Illes Balears (26,700 more), Comunidad de Madrid (18,200 more), Castilla y León (13,700) and Andalucía (10,000). Conversely, the greatest decreases in the number of active persons were recorded in Cataluña (34,500).

In the last 12 months, the number of economically active persons decreased by 84,000 persons in Cataluña and 14,900 in País Vasco. In contrast, the greatest increases were in Andalucía (50,600 more), Illes Balears (18,800) and Región de Murcia (10,400).

The Autonomous Communities that most increased their employment were: Illes Balears (60,400 persons), Comunidad de Madrid (7,500), Región de Murcia (6,800), Castilla y León (5,600) and Comunitat Valenciana (4,900). In contrast, the Autonomous Communities that registered the greatest decreases in employment this quarter were: Andalucía (23,300 fewer employed persons), Castilla – La Mancha (19,500 fewer), Cataluña (19,100), Galicia (16,800) and Canarias (12,400).

The most pronounced drops in employment in the last 12 months, were recorded in Cataluña (214,600 fewer employed persons), Andalucía (133,500) and Comunidad de Madrid (99,900). The only Autonomous Community that registered an interannual increase in unemployment were Illes Balears.

Regarding unemployment, the number of unemployed persons decreased in Illes Balears in 33,700 persons and in Cataluña in 15,400 this quarter. In turn, there were 33,300 unemployed persons more in Andalucía, 13,700 in Castilla – La Mancha and 10,000 in País Vasco, Comunidad de Madrid and Galicia.

The Autonomous Communities that presented the greatest interannual increases in unemployment were Andalucía (184,100 more unemployed persons), Cataluña (130,700), Comunidad de Madrid (98,400) and Comunitat Valenciana (84,300).

País Vasco remained the unemployment rate under 15%. At the opposite end of the spectrum, Andalucía, Extremadura and Canarias presented rates above 33%.

The economic activity rates fluctuated this quarter between the 67,54% recorded in Illes Balears, and the 52,50% registered in Principado de Asturias.

Results by province

The provincial results summary of the EAPS may be accessed via the following link:

http://www.ine.es/en/daco/daco42/daco4211/epapro0212_en.pdf

All of the provincial information from this survey may be accessed via the following links:

- In the INEbase database
<http://www.ine.es/jaxiBD/menu.do?L=1&divi=EPA&his=0&type=db>
- In the TEMPUS database
<http://www.ine.es/menu/redir/GSTConsul.shtml?divi=EPA>

For further information see [INEbase-www.ine.es/en/welcome_en.htm](http://www.ine.es/en/welcome_en.htm) All press releases at: www.ine.es/en/prensa/prensa_en.htm

Press Office: Telephone numbers: 91 583 93 63 / 94 08 – Fax: 91 583 90 87 - gprensa@ine.es

Information Area: Telephone number: 91 583 91 00 – Fax: 91 583 91 58 – www.ine.es/infoine/?L=1

Methodological note

General features

The Economically Active Population Survey (EAPS) is a continuous sample-based study aimed at family dwellings, and which has been conducted since 1964.

The additional sample collected by the *Galician Statistics Institute* (IGE) has been incorporated as of the third quarter of 2009, using the same fieldwork system and identical methodology to that of the INE. Therefore, apart from the 3,588 census sections that have made up the sample for the whole of Spain since 2005, we must take into account the 234 additional sections in the Autonomous Community of Galicia. Since the third quarter of 2009, the EAPS sample is made up of 3,822 census sections from the more than 30,000 census sections into which Spain is divided. An average of 18 households are surveyed in each one, except in the provinces of Barcelona, Madrid, Sevilla, Valencia and Zaragoza, where the number of households surveyed is 22. Thus, the sample size is approximately 65,000 dwellings, providing information on some 180,000 persons. The data is collected via personal and telephone interviews. The information is carefully filtered and computer-processed. Results are obtained within the month following the end of the reference quarter for the data.

Main definitions

Active persons: persons aged 16 years old and over who, during the reference week (the week prior to that when the interview is held), supplied labour for the production of goods and services, or were available to do so and in conditions to incorporate themselves into said production. They are divided into employed and unemployed persons.

Employed persons: persons aged 16 years old and over who, during the reference week, worked for at least one hour in exchange for payment (salary, wage, business benefit, etc.) in cash or in kind. Persons who, being employed, had been temporarily absent from their job due to illness, holidays, etc., are also considered employed persons.

Employed persons are classified, considering their professional status, as non-wage earners (employers, businesspersons without wage earners and independent workers, cooperative members, family assistance) and wage earners (public or private).

Considering the length of the working day, employed persons are classified as full-time and part-time employed persons. The usual working week may not be shorter than 30 hours in the first case, nor exceed 35 hours in the second.

Wage earners are classified as permanent and temporary. For the latter, the end of their contract or work relationship is set by means of objective conditions, such as the expiry of a certain period of time, the completion of a specific task, etc.

A significant category within employment is that of **time-related underemployment**, defined in the 16th International Labour Statisticians Conference (Geneva, 1998). The EAPS considers persons suffering time-related underemployment as employed persons who would like to work more hours, who are available to work more hours and whose effective working hours in the reference week are less than the number of hours usually worked by employed persons working full-time in the same branch of activity as that in which the underemployed person develops his/her main job.

Unemployed persons: persons aged 16 years old and over who, during the reference week, were jobless, available for work, and actively looking for a job. Persons who might have already found a job and are waiting to start are also considered to be unemployed, provided that they meet the first two conditions.

According to European Commission Regulation 1897/2000, the following are considered to be active search methods, in the four weeks prior to the interview:

- Being in contact with a public employment office for the purpose of finding work, whatever part they play in the initiative (the renewal of registration due to purely administrative reasons does not constitute active planning).
- Being in contact with a private office (temporary employment agency, specialised hiring agency, etc.) with the objective of finding work.
- Having sent an application directly to employers.
- Having searched via personal relations and trade unions, etc.
- Having advertised oneself or responded to newspaper advertisements.
- Having studied job vacancies.
- Having taken part in a test, public exam or interview in the framework of a contracting procedure.
- Having looked for land, premises or material.
- Having taken steps to obtain permits, licences or financial resources.

Inactive persons: persons aged 16 years old and over not included in any of the above categories.

Economically Active Population Survey Second Quarter 2012

National results

(Continues)

	Current quarter	Variation on previous quarter		Variation on same quarter, previous year	
		Difference	Percentage	Difference	Percentage
1. Population aged 16 years and over by sex and labour status					
BOTH SEXES					
Population aged 16 years and over	38,467.3	-26.3	-0.07	-13.9	-0.04
Active population	23,110.4	37.6	0.16	-26.4	-0.11
- Employed	17,417.3	-15.9	-0.09	-885.8	-4.84
- Unemployed	5,693.1	53.5	0.95	859.4	17.78
Inactive	15,357.0	-63.9	-0.41	12.5	0.08
Activity rate	60.08	0.14	-	-0.05	-
Unemployment rate	24.63	0.19	-	3.74	-
Population aged 16 to 64 years	30,541.3	-64.8	-0.21	-168.7	-0.55
Activity rate (16-64)	75.12	0.25	-	0.27	-
Unemployment rate (16-64)	24.78	0.20	-	3.77	-
Employment rate (16-64)	56.50	0.04	-	-2.61	-
MALES					
Population aged 16 years and over	18,749.9	-23.5	-0.12	-44.8	-0.24
Active population	12,590.5	39.4	0.31	-84.4	-0.67
- Employed	9,496.7	-30.6	-0.32	-570.1	-5.66
- Unemployed	3,093.8	70.0	2.31	485.7	18.62
Inactive	6,159.4	-62.9	-1.01	39.6	0.65
Activity rate	67.15	0.29	-	-0.29	-
Unemployment rate	24.57	0.48	-	4.00	-
Population aged 16 to 64 years	15,343.2	-41.3	-0.27	-116.2	-0.75
Activity rate (16-64)	81.45	0.43	-	0.00	-
Unemployment rate (16-64)	24.72	0.49	-	4.01	-
Employment rate (16-64)	61.31	-0.07	-	-3.27	-
FEMALES					
Population aged 16 years and over	19,717.4	-2.9	-0.01	30.9	0.16
Active population	10,519.8	-1.8	-0.02	58.0	0.55
- Employed	7,920.5	14.6	0.19	-315.7	-3.83
- Unemployed	2,599.3	-16.4	-0.63	373.7	16.79
Inactive	9,197.6	-1.0	-0.01	-27.1	-0.29
Activity rate	53.35	0.00	-	0.21	-
Unemployment rate	24.71	-0.15	-	3.44	-
Population aged 16 to 64 years	15,198.1	-23.4	-0.15	-52.5	-0.34
Activity rate (16-64)	68.74	0.07	-	0.58	-
Unemployment rate (16-64)	24.86	-0.15	-	3.47	-
Employment rate (16-64)	51.65	0.15	-	-1.93	-

2. Spanish population⁽¹⁾ aged 16 years and over by labour status

SPANISH POPULATION AGED 16 YEARS AND OVER	33,874.5	-4.0	-0.01	54.1	0.16
Active population	19,661.0	88.2	0.45	99.2	0.51
- Employed	15,201.3	-25.0	-0.16	-666.0	-4.20
- Unemployed	4,459.7	113.3	2.61	765.2	20.71
Inactive	14,213.4	-92.3	-0.64	-45.2	-0.32
Activity rate	58.04	0.27	-	0.20	-
Unemployment rate	22.68	0.48	-	3.80	-

⁽¹⁾ including dual nationality

July 27th 2012

National results

(Continuation)

	Current quarter	Variation on previous quarter		Variation on same quarter, previous year		
		Difference	Percentage	Difference	Percentage	
3. Foreign population aged 16 years and over by labour status						
FOREIGN POPULATION AGED 16 YEARS AND OVER	4,592.9	-22.3	-0.48	-67.9	-1.46	
Active population	3,449.3	-50.6	-1.45	-125.6	-3.51	
- Employed	2,215.9	9.1	0.41	-219.8	-9.02	
- Unemployed	1,233.4	-59.7	-4.62	94.2	8.27	
Inactive	1,143.5	28.3	2.54	57.7	5.31	
Activity rate	75.10	-0.73	-	-1.60	-	
Unemployment rate	35.76	-1.19	-	3.89	-	
4. Employed by sex, age group and economic sector						
BOTH SEXES	17,417.3	-15.9	-0.09	-885.8	-4.84	
16 to 19 years	85.8	0.3	0.33	-45.1	-34.47	
20 to 24 years	754.0	-11.0	-1.44	-150.9	-16.68	
25 to 29 years	1,780.1	-9.8	-0.55	-228.2	-11.36	
30 to 34 years	2,547.6	-18.9	-0.74	-208.1	-7.55	
35 to 39 years	2,800.5	6.1	0.22	-109.3	-3.76	
40 to 44 years	2,575.2	-17.9	-0.69	-71.5	-2.70	
45 to 49 years	2,387.8	-7.1	-0.30	-60.9	-2.49	
50 to 54 years	2,034.9	-7.5	-0.37	-30.8	-1.49	
55 and over	2,451.4	49.9	2.08	19.1	0.78	
MALES	9,496.7	-30.6	-0.32	-570.1	-5.66	
16 to 19 years	49.4	1.8	3.81	-20.1	-28.97	
20 to 24 years	381.3	0.4	0.12	-74.4	-16.33	
25 to 29 years	890.1	-21.9	-2.40	-150.5	-14.46	
30 to 34 years	1,352.8	-16.6	-1.21	-131.6	-8.87	
35 to 39 years	1,533.6	4.0	0.26	-73.3	-4.56	
40 to 44 years	1,431.4	-23.7	-1.63	-50.2	-3.39	
45 to 49 years	1,309.9	-0.3	-0.02	-40.8	-3.02	
50 to 54 years	1,129.5	-0.7	-0.06	-24.6	-2.13	
55 and over	1,418.8	26.3	1.89	-4.5	-0.32	
FEMALES	7,920.5	14.6	0.19	-315.7	-3.83	
16 to 19 years	36.4	-1.5	-4.04	-25.0	-40.70	
20 to 24 years	372.7	-11.5	-2.99	-76.5	-17.02	
25 to 29 years	890.0	12.1	1.38	-77.7	-8.03	
30 to 34 years	1,194.7	-2.4	-0.20	-76.5	-6.02	
35 to 39 years	1,266.9	2.1	0.17	-36.0	-2.77	
40 to 44 years	1,143.8	5.8	0.51	-21.4	-1.83	
45 to 49 years	1,077.8	-6.8	-0.63	-20.1	-1.83	
50 to 54 years	905.5	-6.8	-0.74	-6.2	-0.68	
55 and over	1,032.7	23.6	2.34	23.6	2.34	
TOTAL EMPLOYED	17,417.3	-15.9	-0.09	-885.8	-4.84	
Agriculture	732.3	-44.0	-5.66	-9.0	-1.21	
Industry	2,438.2	-21.0	-0.86	-139.5	-5.41	
Construction	1,192.9	6.2	0.52	-237.3	-16.59	
Services	13,053.9	42.8	0.33	-500.0	-3.69	

National results

(Continuation)

	Current quarter	Variation on previous quarter		Variation on same quarter, previous year	
		Difference	Percentage	Difference	Percentage
5. Employed by professional status, type of contract and working hours					
TOTAL EMPLOYED	17,417.3	-15.9	-0.09	-885.8	-4.84
Self-employed workers	3,012.3	-2.6	-0.09	10.1	0.34
- Employers	924.9	15.0	1.65	-27.8	-2.92
- Independent workers	1,930.2	-12.9	-0.66	59.2	3.17
- Cooperatives members	29.7	-4.2	-12.27	-5.1	-14.63
- Family workers	127.6	-0.6	-0.49	-16.2	-11.27
Employees	14,397.3	-13.9	-0.10	-895.2	-5.85
- With a permanent job	10,990.8	4.4	0.04	-398.8	-3.50
- With a temporary job	3,406.5	-18.3	-0.53	-496.4	-12.72
Others	7.7	0.6	8.07	-0.7	-8.64
FULL-TIME EMPLOYED	14,817.0	-110.3	-0.74	-898.1	-5.71
Males	8,855.1	-78.0	-0.87	-595.7	-6.30
Females	5,961.8	-32.3	-0.54	-302.4	-4.83
PART-TIME EMPLOYED	2,600.3	94.3	3.76	12.3	0.48
Males	641.6	47.4	7.98	25.6	4.15
Females	1,958.7	46.9	2.45	-13.3	-0.67

6. Unemployed by sex, age group, and economic sector

BOTH SEXES	5,693.1	53.5	0.95	859.4	17.78
16 to 19 years	235.2	21.1	9.88	16.2	7.41
20 to 24 years	722.3	14.6	2.06	54.7	8.19
25 to 54 years	4,239.9	-3.7	-0.09	672.5	18.85
55 and over	495.7	21.5	4.53	116.0	30.56
MALES	3,093.8	70.0	2.31	485.7	18.62
16 to 19 years	131.8	14.0	11.88	7.9	6.36
20 to 24 years	382.9	-3.1	-0.80	18.5	5.07
25 to 54 years	2,295.0	55.7	2.49	406.6	21.53
55 and over	284.1	3.4	1.19	52.8	22.82
FEMALES	2,599.3	-16.4	-0.63	373.7	16.79
16 to 19 years	103.4	7.1	7.42	8.3	8.77
20 to 24 years	339.4	17.7	5.50	36.2	11.94
25 to 54 years	1,944.9	-59.4	-2.96	265.9	15.84
55 and over	211.6	18.2	9.38	63.2	42.62
TOTAL UNEMPLOYED	5,693.1	53.5	0.95	859.4	17.78
Agriculture	280.7	11.4	4.25	36.2	14.79
Industry	320.2	23.5	7.93	79.0	32.76
Construction	441.7	-40.5	-8.40	12.2	2.84
Services	1,665.6	-84.5	-4.83	233.9	16.34
Lost their job more than 1 year ago	2,492.8	107.4	4.50	416.2	20.04
First job seekers	492.1	36.1	7.92	82.0	19.99

National results

(Conclusion)

	Current quarter	Variation on previous quarter		Variation on same quarter, previous year	
		Difference	Percentage	Difference	Percentage

7. Unemployment rate by relationship with the reference person

	Current quarter	Variation on previous quarter	Percentage	Variation on same quarter, previous year	Percentage
TOTAL	24.63	0.19	-	3.74	-
Reference person	20.53	0.04	-	3.51	-
Spouse or partner	20.20	-0.15	-	2.80	-
Child	41.01	1.10	-	6.14	-
Other relatives	32.89	-0.75	-	1.89	-
Unrelated persons	22.52	1.04	-	8.41	-

8. Household data

	Current quarter	Variation on previous quarter	Percentage	Variation on same quarter, previous year	Percentage
TOTAL HOUSEHOLDS	17,451.7	43.7	0.25	122.2	0.71
Households with at least one active member	13,028.5	29.2	0.22	37.7	0.29
- All member employed	8,580.5	-13.2	-0.15	-580.6	-6.34
- All member unemployed	1,737.6	9.3	0.54	370.2	27.07
Households without any active population	4,423.2	14.5	0.33	84.5	1.95

Mobility according to activity in current and previous quarter

Classification in previous quarter	Total	Classification in current quarter		
		Employed	Unemployed	Inactive
BOTH SEXES				
Total	100.00	100.00	100.00	100.00
Employed	45.25	92.96	14.09	2.54
Unemployed	14.10	4.91	70.20	4.52
Inactive	40.65	2.13	15.71	92.95
MALES				
Total	100.00	100.00	100.00	100.00
Employed	50.87	93.49	15.57	2.61
Unemployed	15.42	4.91	73.17	3.98
Inactive	33.71	1.60	11.26	93.41
FEMALES				
Total	100.00	100.00	100.00	100.00
Employed	39.93	92.32	12.36	2.49
Unemployed	12.84	4.91	66.73	4.88
Inactive	47.23	2.77	20.91	92.63

Grossing up factors of current quarter (forward analysis)

Results by Autonomous Communities and Cities

(Continues)

	Current quarter	Variation on previous quarter		Variation on same quarter, previous year	
		Difference	Percentage	Difference	Percentage
1. Population aged 16 years and over					
TOTAL	38,467.3	-26.3	-0.07	-13.9	-0.04
Andalucía	6,801.8	4.0	0.06	20.0	0.29
Aragón	1,105.8	-1.7	-0.15	-4.5	-0.41
Asturias, Principado de	921.6	-2.2	-0.24	-5.9	-0.63
Baleares, Illes	905.8	2.4	0.27	3.8	0.42
Canarias	1,771.6	4.2	0.24	15.3	0.87
Cantabria	492.5	-0.7	-0.15	-1.2	-0.24
Castilla y León	2,124.8	-5.6	-0.26	-14.5	-0.68
Castilla-La Mancha	1,700.6	-4.0	-0.23	-2.3	-0.13
Cataluña	6,026.0	-15.6	-0.26	-26.3	-0.44
Comunitat Valenciana	4,174.9	0.7	0.02	5.6	0.14
Extremadura	907.6	-0.5	-0.06	-0.2	-0.02
Galicia	2,365.7	-5.1	-0.21	-11.8	-0.50
Madrid, Comunidad de	5,284.1	4.2	0.08	16.7	0.32
Murcia, Región de	1,194.7	0.4	0.03	4.6	0.39
Navarra, Comunidad Foral de	513.8	-0.6	-0.12	0.2	0.04
País Vasco	1,796.9	-6.1	-0.34	-14.4	-0.79
Rioja, La	260.7	-0.4	-0.17	-1.4	-0.53
Ceuta	60.5	0.0	-0.07	0.5	0.91
Melilla	58.2	0.5	0.93	1.9	3.32

2. Active population

TOTAL	23,110.4	37.6	0.16	-26.4	-0.11
Andalucía	4,018.3	10.0	0.25	50.6	1.27
Aragón	656.4	7.3	1.12	4.6	0.71
Asturias, Principado de	483.8	9.7	2.04	-0.5	-0.11
Baleares, Illes	611.8	26.7	4.56	18.8	3.16
Canarias	1,118.6	-4.0	-0.35	4.0	0.35
Cantabria	276.7	-5.5	-1.96	-0.2	-0.07
Castilla y León	1,184.2	13.7	1.17	0.2	0.02
Castilla-La Mancha	996.6	-5.8	-0.58	-6.3	-0.62
Cataluña	3,742.4	-34.5	-0.91	-84.0	-2.19
Comunitat Valenciana	2,492.9	-1.0	-0.04	-7.8	-0.31
Extremadura	492.3	-2.3	-0.47	-3.8	-0.77
Galicia	1,309.6	-6.5	-0.49	-1.4	-0.10
Madrid, Comunidad de	3,410.1	18.2	0.54	-1.5	-0.04
Murcia, Región de	744.7	1.3	0.18	10.4	1.41
Navarra, Comunidad Foral de	310.6	3.1	0.99	0.5	0.17
País Vasco	1,037.5	3.2	0.31	-14.9	-1.41
Rioja, La	155.7	1.3	0.83	0.4	0.28
Ceuta	34.9	0.2	0.49	1.8	5.28
Melilla	33.2	2.6	8.54	2.7	8.71

* Data below 5000 are subject to strong variations, due to sampling error

Results by Autonomous Communities and Cities

(Conclusion)

	Current quarter	Variation on previous quarter		Variation on same quarter, previous year	
		Difference	Percentage	Difference	Percentage
3. Employed					
TOTAL	17,417.3	-15.9	-0.09	-885.8	-4.84
Andalucía	2,655.4	-23.3	-0.87	-133.5	-4.79
Aragón	534.1	4.2	0.80	-4.1	-0.77
Asturias, Principado de	382.1	4.6	1.21	-19.2	-4.79
Balears, Illes	481.6	60.4	14.35	4.2	0.87
Canarias	747.9	-12.4	-1.63	-35.0	-4.47
Cantabria	228.6	-1.2	-0.50	-7.4	-3.12
Castilla y León	950.2	5.6	0.59	-40.5	-4.09
Castilla-La Mancha	710.4	-19.5	-2.67	-61.7	-7.99
Cataluña	2,920.8	-19.1	-0.65	-214.6	-6.85
Comunitat Valenciana	1,817.3	4.9	0.27	-92.0	-4.82
Extremadura	328.0	-8.1	-2.42	-53.4	-13.99
Galicia	1,033.7	-16.8	-1.60	-57.7	-5.28
Madrid, Comunidad de	2,766.8	7.5	0.27	-99.9	-3.48
Murcia, Región de	549.7	6.8	1.24	-4.8	-0.86
Navarra, Comunidad Foral de	259.6	2.3	0.91	-10.6	-3.93
País Vasco	886.4	-7.7	-0.86	-43.5	-4.68
Rioja, La	120.4	-3.1	-2.51	-9.3	-7.19
Ceuta	21.1	-1.3	-5.68	-2.5	-10.60
Melilla	23.1	0.2	0.79	-0.2	-1.03

4. Unemployed

TOTAL	5,693.1	53.5	0.95	859.4	17.78
Andalucía	1,362.9	33.3	2.50	184.0	15.61
Aragón	122.3	3.1	2.56	8.8	7.72
Asturias, Principado de	101.8	5.1	5.28	18.7	22.51
Balears, Illes	130.1	-33.7	-20.59	14.6	12.63
Canarias	370.7	8.4	2.32	39.0	11.74
Cantabria	48.1	-4.4	-8.33	7.2	17.58
Castilla y León	234.0	8.1	3.59	40.7	21.05
Castilla-La Mancha	286.2	13.7	5.02	55.4	24.00
Cataluña	821.6	-15.4	-1.84	130.7	18.91
Comunitat Valenciana	675.5	-5.9	-0.86	84.3	14.25
Extremadura	164.3	5.8	3.67	49.5	43.15
Galicia	275.9	10.3	3.89	56.3	25.64
Madrid, Comunidad de	643.3	10.7	1.69	98.4	18.05
Murcia, Región de	195.0	-5.4	-2.71	15.2	8.43
Navarra, Comunidad Foral de	51.0	0.7	1.44	11.1	27.98
País Vasco	151.1	10.9	7.77	28.7	23.44
Rioja, La	35.4	4.4	14.16	9.8	38.09
Ceuta	13.8	1.4	11.70	4.3	(:)
Melilla	10.1	2.4	31.89	2.9	(:)

* Data below 5,000 are subject to strong variations, due to sampling error

(:) The variation percentages calculated from low figures with high sampling errors are not significant

Results by Autonomous Communities and Cities

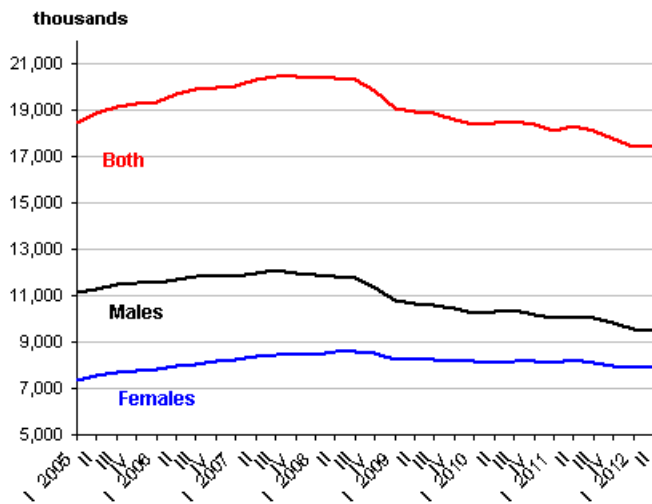
(Absolute figures in thousands and rates in percentage)

5. Employed and unemployed by sex. Activity and unemployment rates

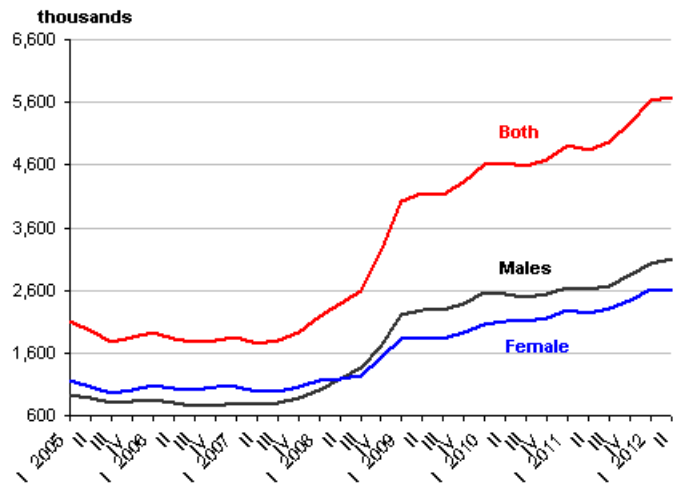
	Both sexes			Males				Females				
	Employed	Unemployed	Activity rate	Unem. rate	Employed	Unemployed	Activity rate	Unem. Rate	Employed	Unemployed	Activity rate	Unem. Rate
TOTAL	17,417.3	5,693.1	60.08	24.63	9,496.7	3,093.8	67.15	24.57	7,920.5	2,599.3	53.35	24.71
Andalucía	2,655.4	1,362.9	59.08	33.92	1,491.8	744.4	67.00	33.29	1,163.6	618.5	51.44	34.70
Aragón	534.1	122.3	59.36	18.64	297.3	65.2	66.55	17.99	236.8	57.1	52.38	19.44
Asturias, Principado de	382.1	101.8	52.50	21.03	204.7	54.4	59.43	21.00	177.4	47.3	46.27	21.07
Balears, Illes	481.6	130.1	67.54	21.27	263.8	63.5	72.67	19.40	217.9	66.6	62.47	23.42
Canarias	747.9	370.7	63.14	33.14	414.6	200.0	70.14	32.54	333.3	170.8	56.29	33.88
Cantabria	228.6	48.1	56.19	17.38	122.6	27.7	63.13	18.45	106.0	20.4	49.70	16.10
Castilla y León	950.2	234.0	55.73	19.76	548.3	117.6	63.70	17.65	401.8	116.5	48.02	22.47
Castilla-La Mancha	710.4	286.2	58.60	28.72	421.8	148.5	66.94	26.04	288.6	137.7	50.23	32.30
Cataluña	2,920.8	821.6	62.10	21.95	1,540.1	455.5	68.40	22.83	1,380.7	366.0	56.20	20.95
Comunitat Valenciana	1,817.3	675.5	59.71	27.10	995.2	382.2	67.02	27.75	822.1	293.3	52.63	26.30
Extremadura	328.0	164.3	54.25	33.38	196.1	87.2	63.27	30.77	131.9	77.2	45.47	36.91
Galicia	1,033.7	275.9	55.36	21.07	546.0	152.1	61.83	21.78	487.7	123.8	49.45	20.25
Madrid, Comunidad de	2,766.8	643.3	64.54	18.86	1,432.8	348.8	70.74	19.58	1,334.1	294.5	58.88	18.08
Murcia, Región de	549.7	195.0	62.33	26.19	311.2	109.6	70.06	26.05	238.5	85.4	54.52	26.36
Navarra, Comunidad Foral de	259.6	51.0	60.46	16.41	138.4	30.1	66.58	17.85	121.2	20.9	54.51	14.71
Pais Vasco	886.4	151.1	57.74	14.56	475.3	76.7	64.15	13.89	411.1	74.4	51.85	15.33
Rioja, La	120.4	35.4	59.74	22.71	68.3	18.0	67.35	20.82	52.0	17.4	52.38	25.06
Ceuta	21.1	13.8	57.76	39.47	13.3	7.1	67.42	34.71	7.8	6.7	48.09	46.15
Melilla	23.1	10.1	57.08	30.27	15.2	5.4	71.03	26.14	8.0	4.7	43.28	36.99

* Data below 5,000 are subject to strong variations, due to sampling errors

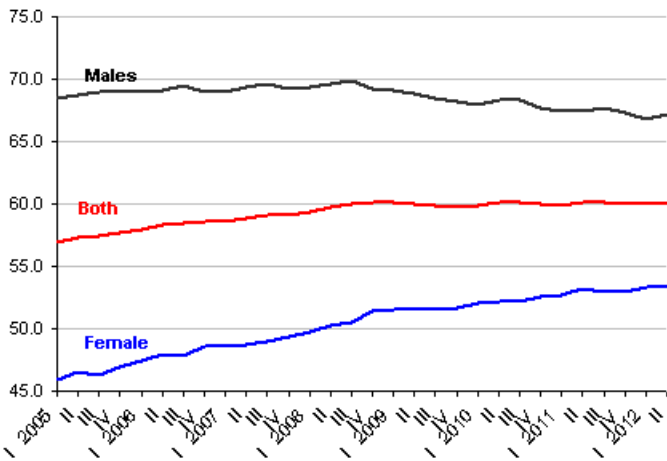
Employment



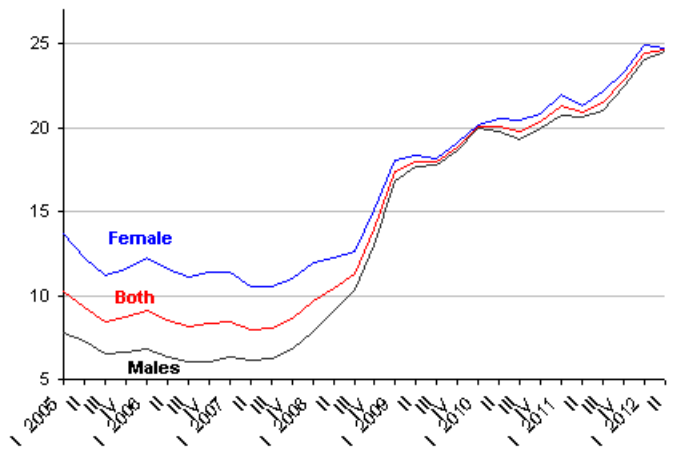
Unemployment



Activity rate



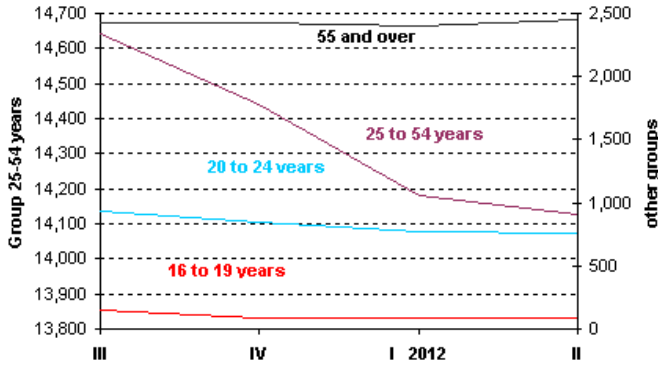
Unemployment rate



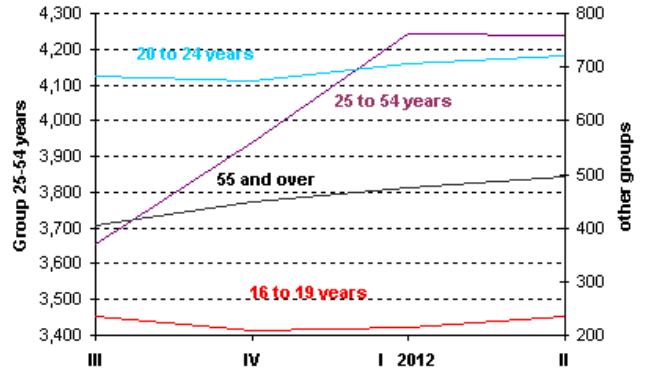
Employed and Unemployed by age

APS Second Quarter 2012

Employment (thousands)

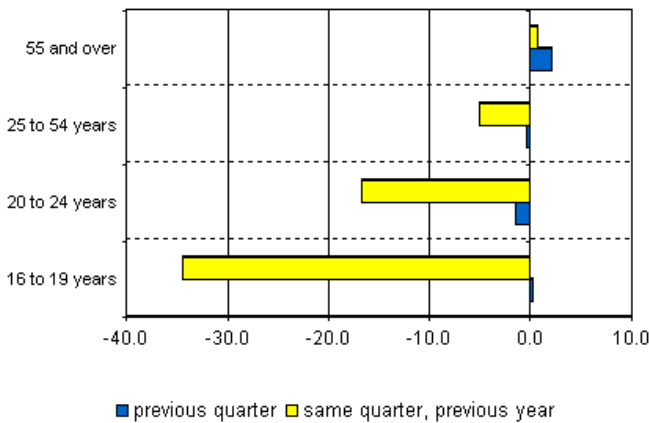


Unemployment (thousands)

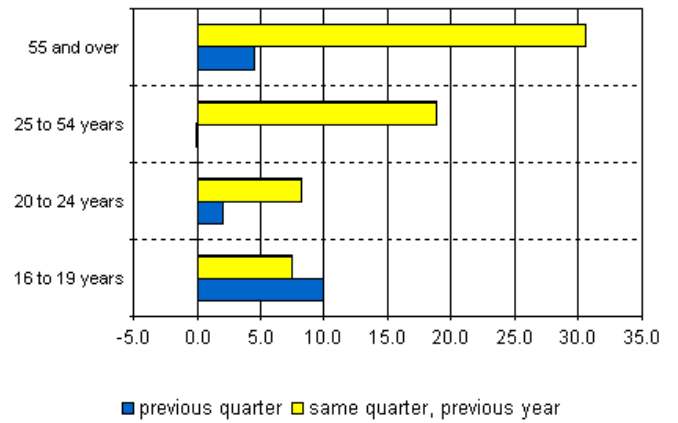


Variation percentages over the previous quarter and over the same quarter of the previous year

Employment

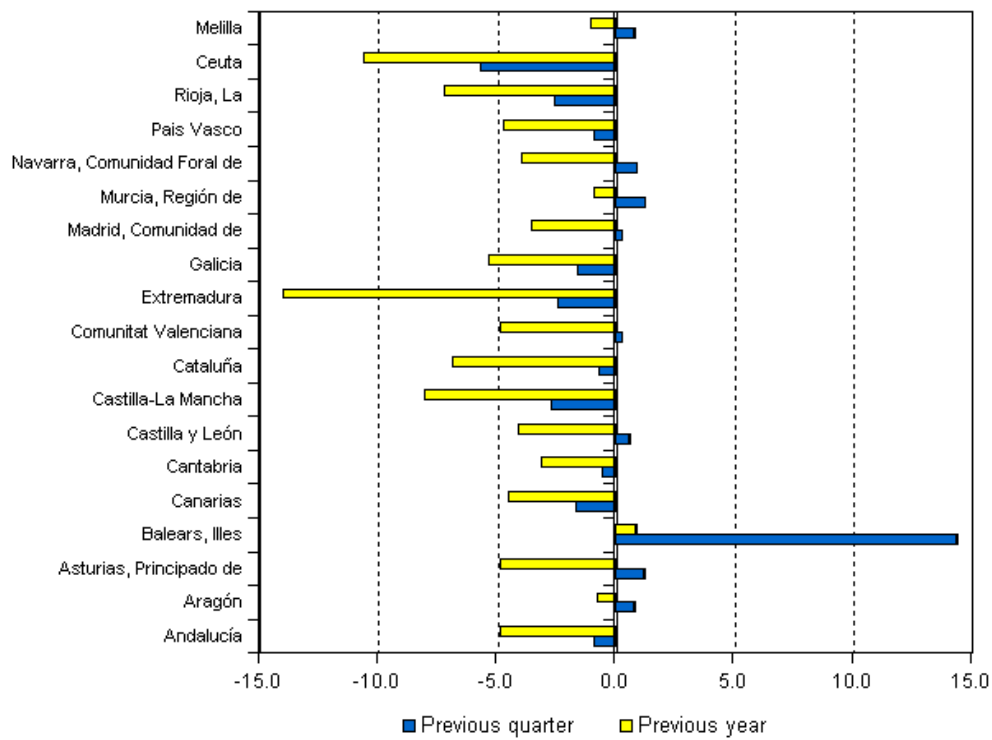


Unemployment



Employment variation percentages over the previous quarter and over the same quarter of the previous year

Second Quarter 2012



Unemployment rate (Spain = 24.63 %)

