

28 July 2022

## Economically Active Population Survey (EAPS) Second quarter of 2022

### Main results

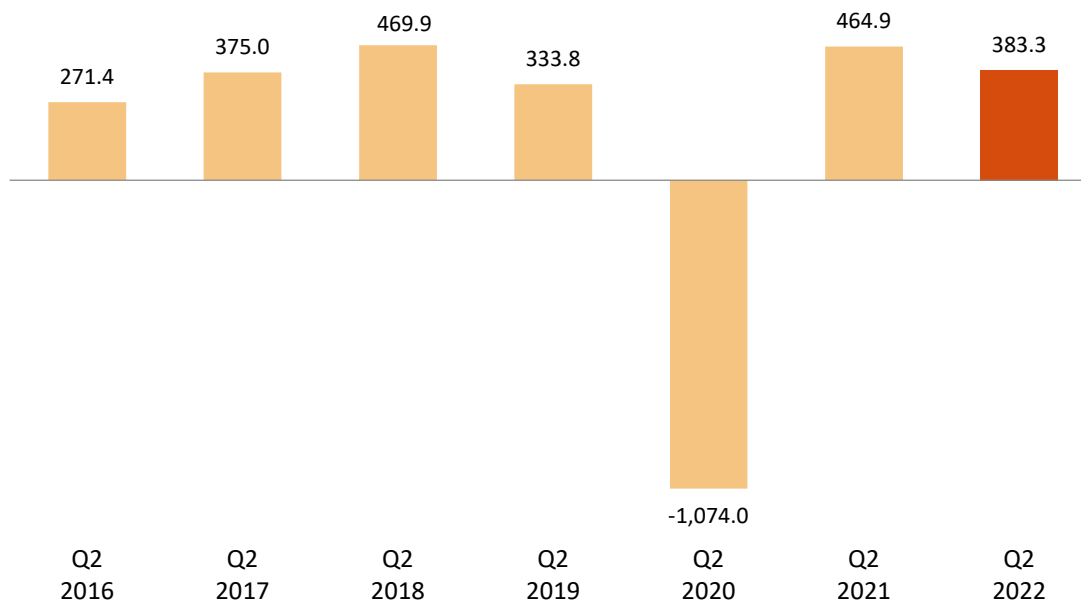
- Employment registers an increase of 383,300 persons in the second quarter of 2022 as compared with the previous quarter (1.91%), standing at 20,468,000 employed persons. In seasonally adjusted terms, the quarterly variation was 0.61%. Employment has grown by 796,400 persons (4.05%) in the last 12 months.
- This quarter, employment increased in the private sector by 397,600 people, while it fell in the public sector by 14,300. In the last twelve months, employment has increased by 782,100 persons in the private sector and 14,300 in the public sector.
- Salaried employees increased this quarter by 375,400. The number of wage-earners with a permanent contract has increased by 616,700 persons, while that of wage-earners with temporary contracts has decreased by 241,300 persons. The number of salaried employees increased by 796,500 in the annual rate (permanent employment increased by 1,076,300 persons and temporary employment fell by 279,800). The number of self-employed workers increased by 10,000 this quarter and showed practically no variation in the last 12 months.
- In this quarter, employment increased in *Services*, by 320,200, in *Industry* by 79,500 and in *Construction* by 21,900 and decreased in *Agriculture* by 38,400 persons. In *Services* in the past year there were 693,300 more employed persons, in *Industry* 111,500 and in *Construction* 13,400, while in *Agriculture* there were 21,700 less.
- The largest increases in the in the economically active population this quarter were registered in Illes Balears (80,200 more), Cataluña (63,800) and Comunidad de Madrid (61,200). The largest decreases were recorded in País Vasco (-18,400.0%) and Principado de Asturias (-5,200.9%). In the last year, employment increased in nearly all autonomous communities. Andalucía (123,800 more), Canarias (121,100) and Canarias (119,000) presented the highest increases.
- The number of unemployed persons decreased by 255,300 this quarter (-8.04%), standing at 2,919,400. In seasonally adjusted terms, the quarterly variation was -6.20%. Over the last 12 months, unemployment has decreased by 624,400 persons (-17.62%).
- The unemployment rate stood at 12.48%, 1.17 points below that of the previous quarter. Within the last year, this rate has decreased by 2.78 points.
- By autonomous communities, the highest quarterly unemployment drops took place in Comunidad de Madrid (-59,700) and Illes Balears (-54,400). In annual terms, the greatest decreases in the number of unemployed persons occurred in Cataluña (118,000 fewer) and Andalucía (-114,900).
- This quarter, the number of economically active persons increased by 128,000, up to 23,387,400. The activity rate increased by 22 hundredths standing at 58.71%. Over the last year, the economically active population has increased by 171,900 persons.

## Employment

The number of employed persons increased by 383,300 persons in the second quarter of 2022 and stood at 20,468,000. The quarterly employment variation rate stood at 1.91%.

The employment rate (percentage of employed persons with respect to the population aged 16 and over) was 51.38%, representing an increase of 87 hundredths as compared to the previous quarter. In annual variation, this rate rose by 1.75 points.

**Quarterly variation of employment.** Thousands.  
(Q2 compared with Q1 of the same year)



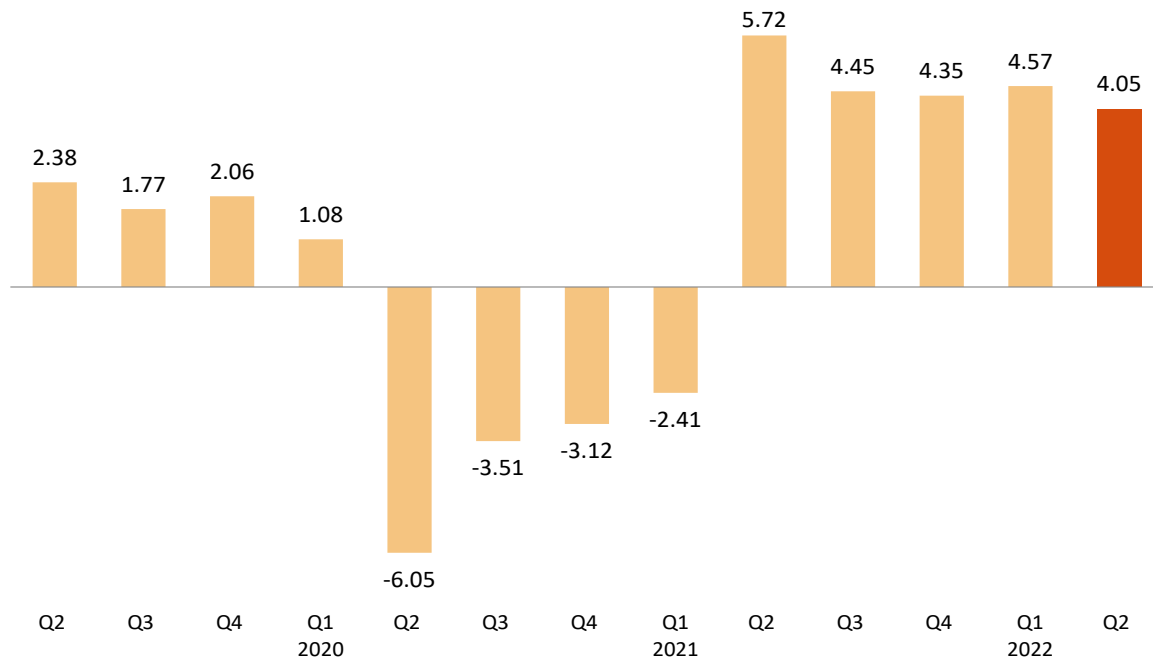
By sex, employment increased this quarter by 185,300 men and 198,000 women. By nationality, employment increased by 267,900 persons among Spaniards<sup>1</sup> and by 115,400 among foreign nationals.

By age, employment grew this quarter in practically all age groups. The groups from 20 to 24 years old (with 102,400 more employed persons) and from 25 to 29 (86,800 more) are of particular note.

In the past 12 months, employment has increased by 796,400 persons (368,100 men and 428,300 women). The annual variation rate of employment was 4.05%, representing an decrease of 52 hundredths compared to the previous quarter.

<sup>1</sup> Includes dual nationality

## Annual variation rate of employment. Percentage.



Employment increased this quarter in *Services* (320,200 persons more), *Industry* (79,500) and *Construction* (21,900), while it fell in *Agriculture* (38,400 less).

In the past year, employment has risen in *Services* (693,300 more employed), in *Industry* (111,500) and in *Construction* (13,400), while it decreased in *Agriculture* (-21,700).

Full-time employment increased by 374,300 persons this quarter and part-time employment fell by 9,000. The percentage of persons working part-time has decreased by 22 hundredths, down to 13.77%.

Over the last 12 months, full-time employment has increased by 813,500 persons and part-time employment has fallen by 17,100.

The number of salaried employees increased this quarter by 375,400. The number of wage-earners with a permanent contract has increased by 616,700 persons, while that of wage-earners with temporary contracts has decreased by 241,300 persons. The temporary employment rate decreased 1.92 hundredths, to 22.29%.

Over the last 12 months, the number of salaried employees grew by 796,500 persons. Permanent employment has increased by 1,076,300, while temporary employment decreased by 279,800.

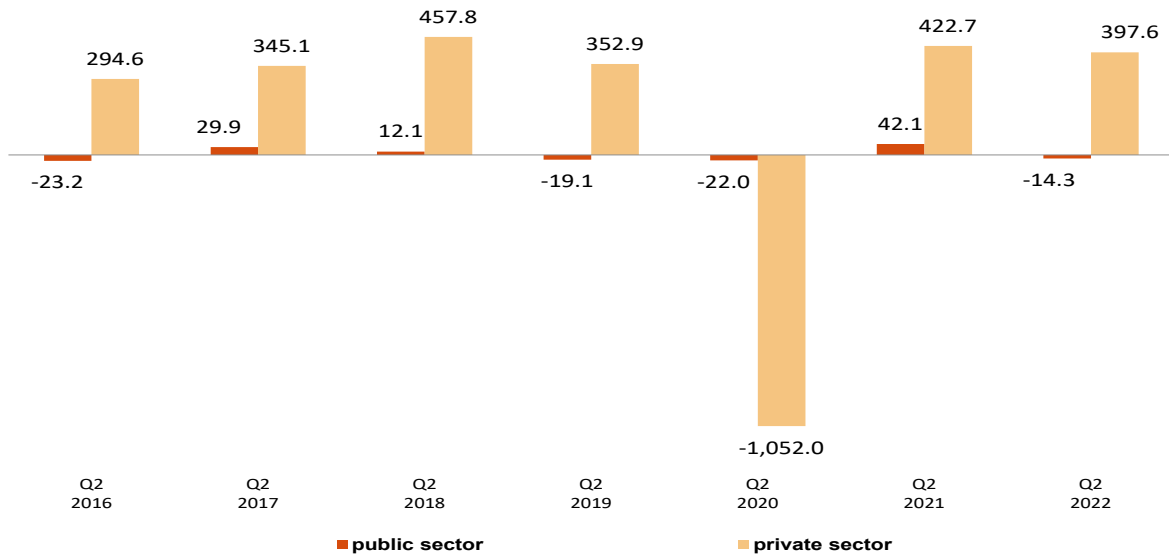
The number of self-employed persons increased by 10,000 persons in quarterly variation. In the last year it remained practically steady (600 more persons).

This quarter, private employment<sup>2</sup> increased by 397,600 persons, standing at 17,014,200. Public employment<sup>3</sup> decreased by 14,300 to 3,453,900.

<sup>2</sup> Employment in the private sector includes: wage-earners from the private sector, employers, independent workers and businesspersons without wage earners, members of a cooperative, family assistance and other professional situations.

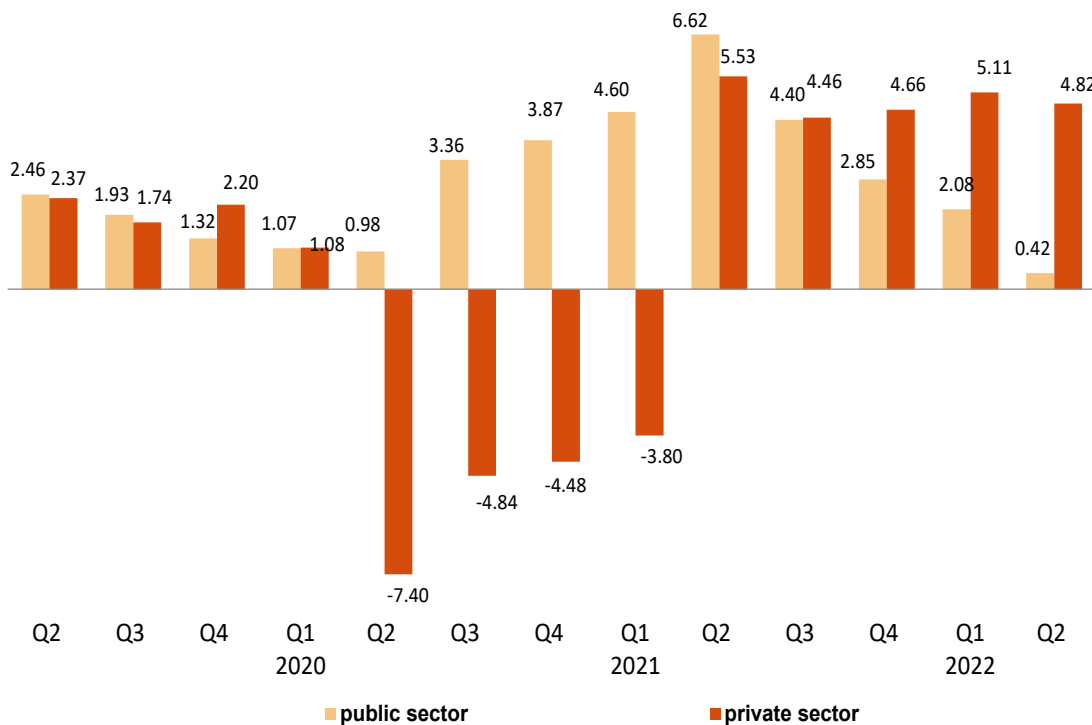
<sup>3</sup> Employment in the public sector includes all salaried employees of public companies and of the National and Regional Administrations, including both workers contributing to the General Social Security System and those affiliated to the Special Civil Service System.

## Quarterly variation of employment by nature of employer. Thousands (Q2 compared with Q1 of the same year)



Employment in the private sector showed an annual variation of 4.82%, while public employment of 0.42%. In the past twelve months, employment has increased by 782,100 persons in the private sector and by 14,300 in the public sector.

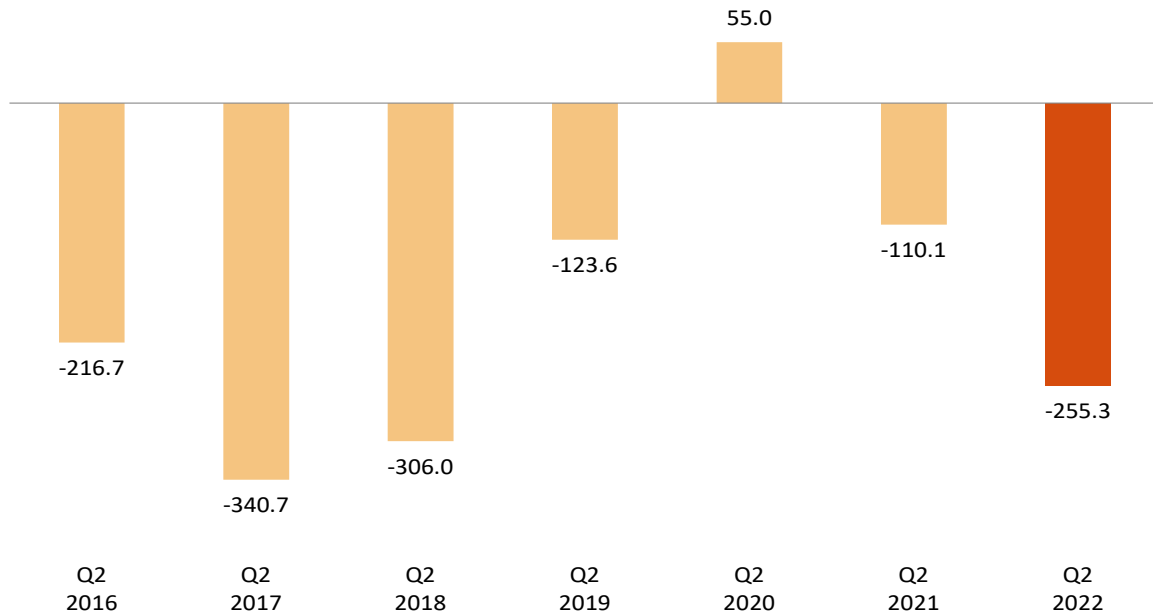
## Annual variation rate of employment by nature of employer. Percentage.



## Unemployment and unemployment rate

Unemployment decreased by 255,300 persons this quarter. The total number of unemployed persons stood at 2,919,400. In relative terms, the quarterly variation of unemployment was -8.04%.

**Quarterly variation of employment. Thousands.**  
(Q2 compared with Q1 of the same year)



The unemployment rate declined by 1.17 points and stood at 12.48%. In the last 12 months, this rate has decreased by 2.78 points.

By sex, the number of unemployed men decreased by 121,900 this quarter, standing at 1,355,300. Among women, unemployment decreased by 133,300, reaching 1,564,100.

Female unemployment rate decreased by 1.30 points and stood at 14.15%. The male unemployment rate decreased by 1.05 points and stood at 10.99%.

By age group, unemployment fell this quarter among those aged 20 to 24 (-11,500), those aged 25 to 54 (-245,100) and those aged 55 and older (-19,600). In turn, the number of unemployed persons increased by 20,900 among persons aged 16 to 19 years old.

By nationality, unemployment decreased this quarter among Spaniards<sup>1</sup> by 189,000 and among foreigners by 66,300. The unemployment rate of the Spanish population was 11.47%, while that of the foreign population was 18.92%.

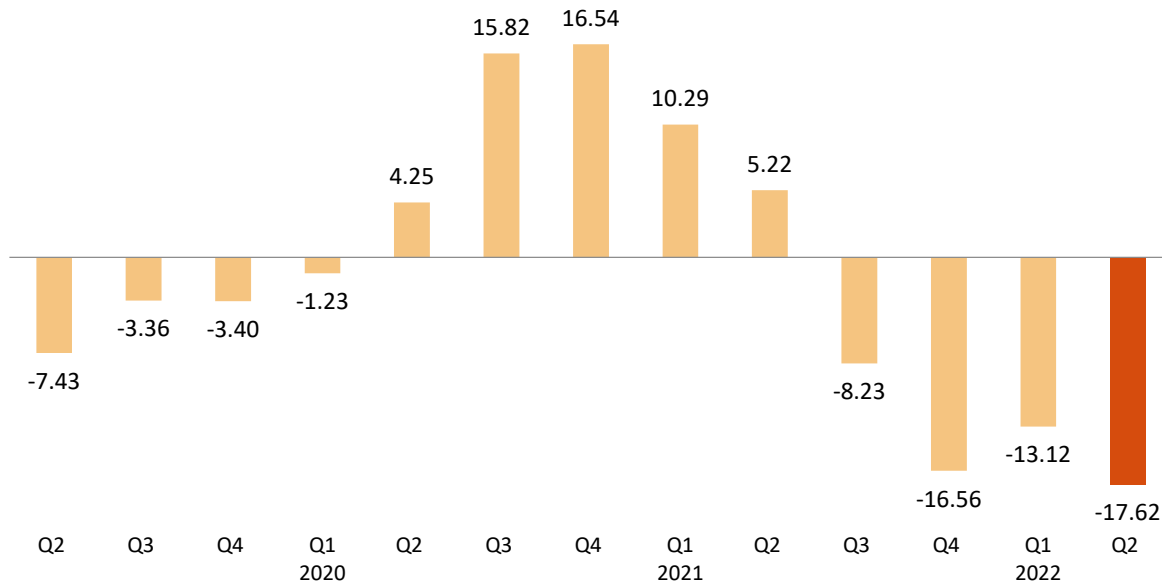
Unemployment decreased this quarter in *Agriculture* (-10,000), in *Industry* (-18,100) and in *Services* (-120,700), while it remained practically unchanged in *Construction* (400 more unemployed).

Unemployment decreased by 99,100 persons among those who lost their job over a year ago and by 7,900 among those who are seeking their first job.

The evolution of unemployment in the annual variation was -17.62%. The total number of unemployed persons has decreased by 624,400 persons in one year, with a decrease of 284,200 for men and 340,200 for women.

<sup>1</sup> Includes dual nationality

**Annual variation rate of unemployment. Percentage.**



By age, the number of unemployed fell in the last 12 months in all age groups. The largest decrease was in the 25-54 age group, with 474,800 less.

In the past year, unemployment decreased in all sectors: in *Services* (61,200 more), in *Agriculture* (-20,900), in *Industry* (-13,200) and in *Construction* (-2,800). On the other hand, the number of unemployed persons who lost their jobs over a year ago has decreased by 454,600 and that of unemployed persons looking for their first job has fallen by 71,700.

### **Economically active population and activity rate**

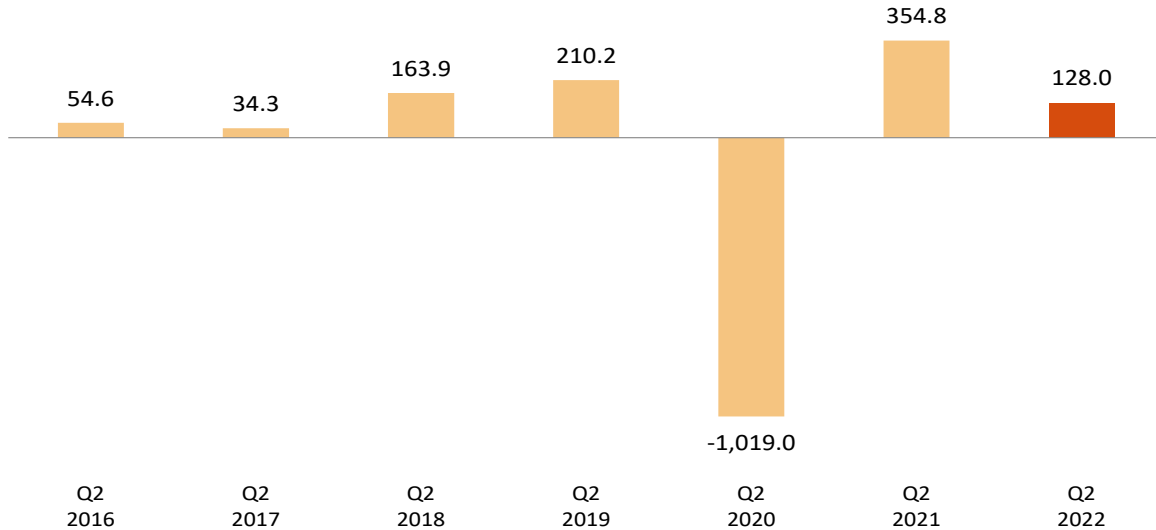
The economically active population experienced an increase of 128,000 persons in the second quarter of this year, standing at 23,387,400. The number of economically active women increased by 64,700, and that of men by 63,300.

By nationality, the number of economically active persons increased in this quarter by 78,900 among Spaniards<sup>1</sup> and 49,100 among foreign nationals.

The economic activity rate increased 22 hundredths, reaching 58.71%. The economic activity rate for males rose 20 hundredths, standing at 63.73%, and that of females increased 23 hundredths, to 53.97%.

<sup>1</sup> Includes dual nationality

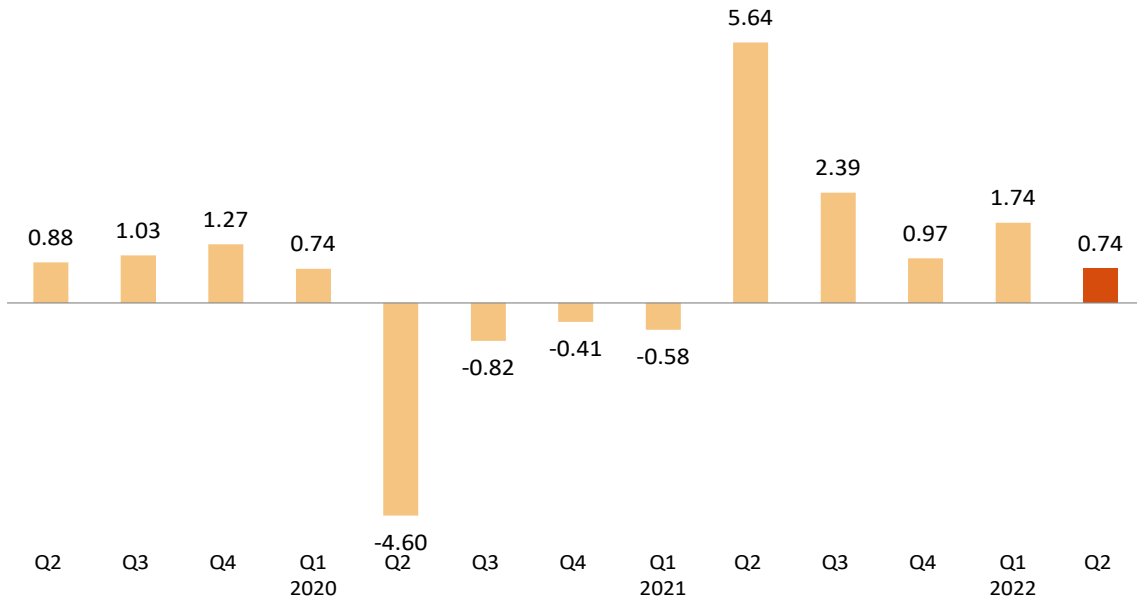
**Quarterly variation of activity.** Thousands.  
(Q2 compared with Q1 of the same year)



The economic activity rate of Spaniards increased 20 hundredths as compared with the previous quarter, standing at 57.26%. Foreign national activity increased by 16 hundredths, up to 69.92%. The difference of almost 13 points between both rates is mainly explained by the different age structures for both populations.

In annual terms, the economically active population has increased by 171,900 persons. The annual variation rate of economically active persons was 0.74%.

**Annual variation rate of activity.** Percentage.



<sup>1</sup> Includes dual nationality

## Households

The number of households increased by 40,600 this quarter, standing at 19,080,100. Of these, 5,255,200 were single-person households.

Households in which all economically active members were unemployed decreased by 62,600 this quarter, reaching a total of 990,300. Of these, 312,700 were single-person households.

On the other hand, the number of households in which all of the economically active members were employed increased by 197,400, standing at 11,247,100. Of these, 2,229,500 were single-person households.

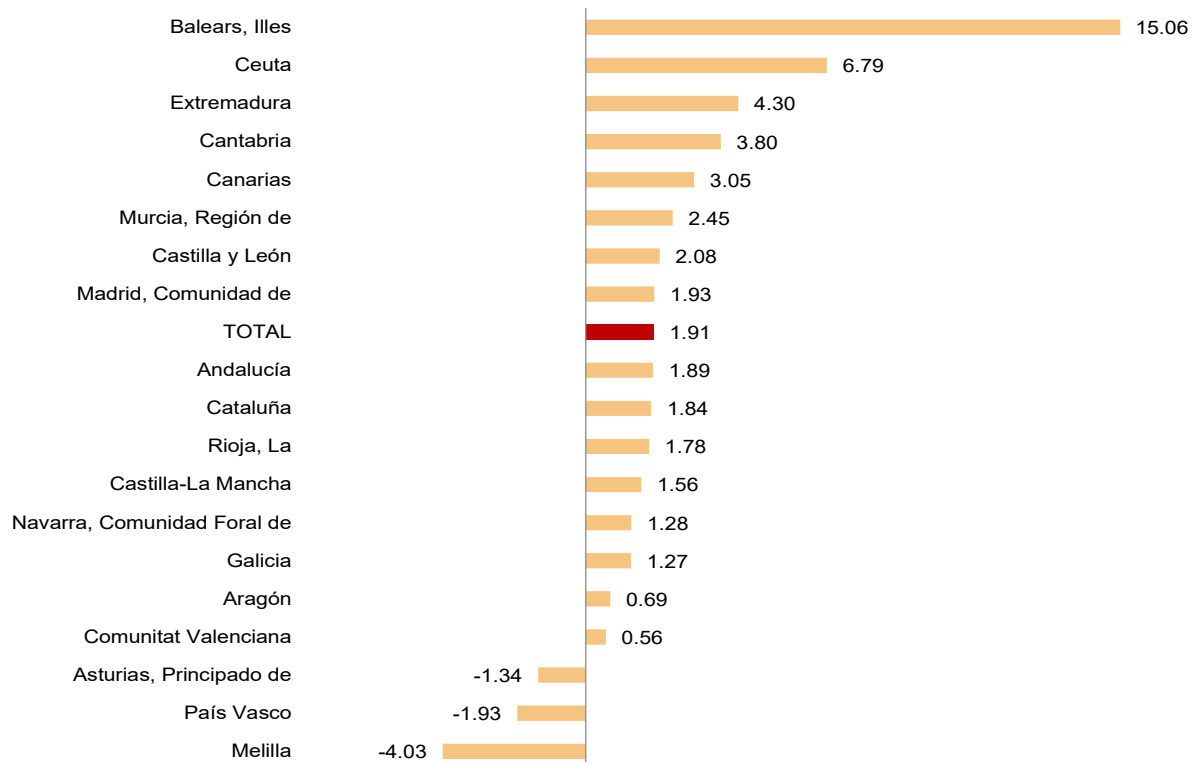
In annual comparison, the number of households with at least one economically active member in which those members were unemployed has decreased by 167,600, while those where all active members were employed has increased by 645,500.

## Results by Autonomous Communities<sup>4</sup>

The largest increases in the in the economically active population this quarter were registered in Illes Balears (80,200 more), Cataluña (63,800) and Comunidad de Madrid (61,200). On the other hand, the largest decreases were recorded in País Vasco (-18,400.0%) and Principado de Asturias (-5,200.9%).

In relative terms, the Autonomous Communities with the greatest annual increase in employment were Illes Balears (15.06%), Extremadura (4.30%) and Cantabria (3.80%).

### Quarterly variation rate of employment by autonomous community. Percentage



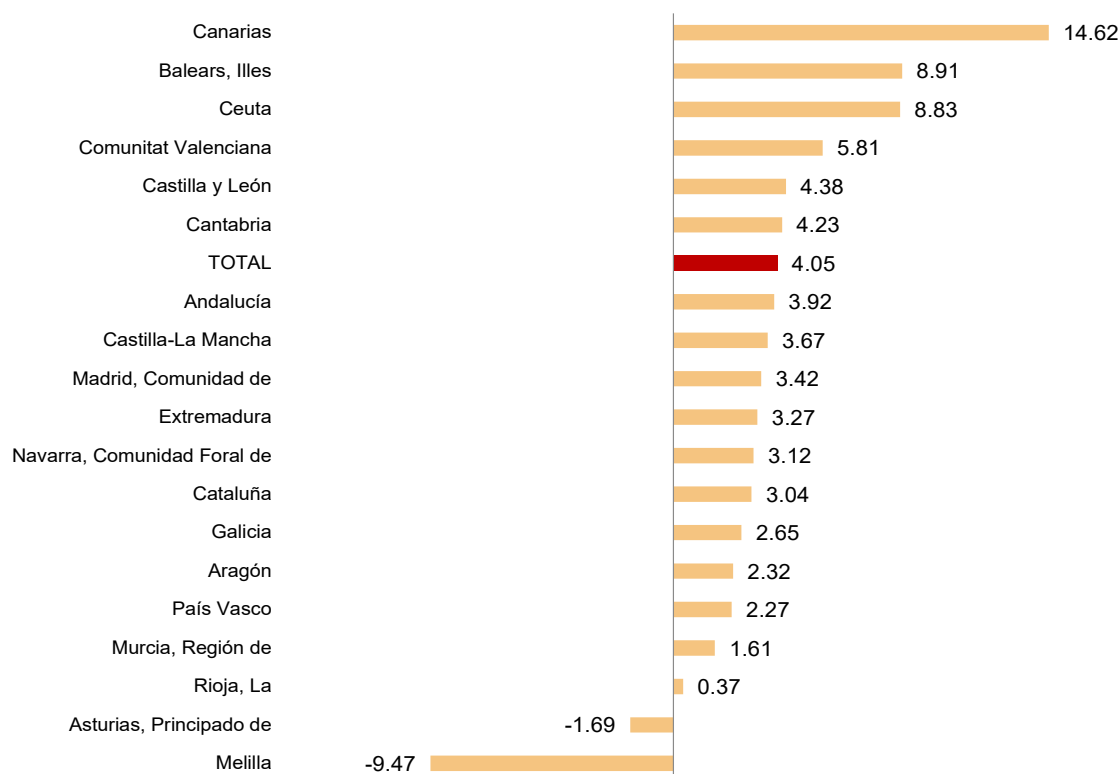
<sup>4</sup> As with the rest of the EAPS data, employment results in this section are presented according to the Autonomous Community where the persons interviewed in the survey reside, and not according to where their workplace is.



In the past year, employment increased in almost all communities. The greatest increases were observed in Andalucía (123,800), Canarias (121,100) and Comunitat Valenciana (119,000).

In relative terms, the Autonomous Communities with the greatest annual employment variations were Canarias (14.62%), Illes Balears (8.91%) and Comunitat Valenciana (5.81%).

## Annual variation rate of employment by autonomous community. Percentage.



Practically all the communities experienced quarterly decreases in unemployment. The greatest decreases were observed in Comunidad de Madrid (-59,700), Illes Balears (-54,400) and Cataluña (-33,700).

In annual terms, the same thing took place. The greatest decreases in the number of unemployed persons occurred in Cataluña (-118,000), Andalucía (-114,900) and Comunitat Valenciana (-91,200).

Cantabria (8.17%), País Vasco (8.75%) and Comunidad Foral de Navarra (8.76%) recorded the lowest unemployment rates this quarter. At the other end of the scale, Andalucía (18.68%), Canarias (17.76%) and Extremadura (16.73%) showed the highest rates.

This quarter, the greatest increases in economic activity were registered in Andalucía (38,000 more economically active persons), Cataluña (30,100) and Illes Balears (25,800). The greatest decreases were observed in País Vasco (19,500 fewer active individuals), Aragón (-8,800) and La Rioja (-4,000).

In the last 12 months, Canarias (54,300 more economically active persons), Comunidad de Madrid (43,300) and Comunitat Valenciana (27,800) registered the greatest increases in the

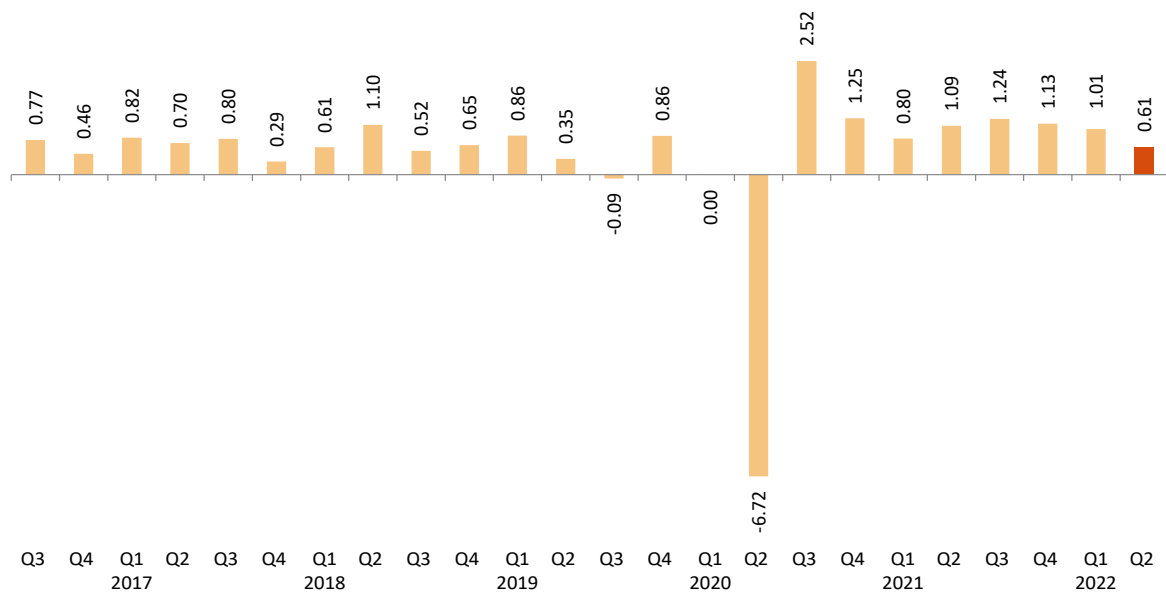
number of economically active persons. However, the greatest decreases were observed in Principado de Asturias (19,000 fewer) and Cataluña (-14,100).

This quarter, the activity rates fluctuated between 65.42% for Illes Balears and 48.86% for Principado de Asturias.

### Seasonally adjusted series

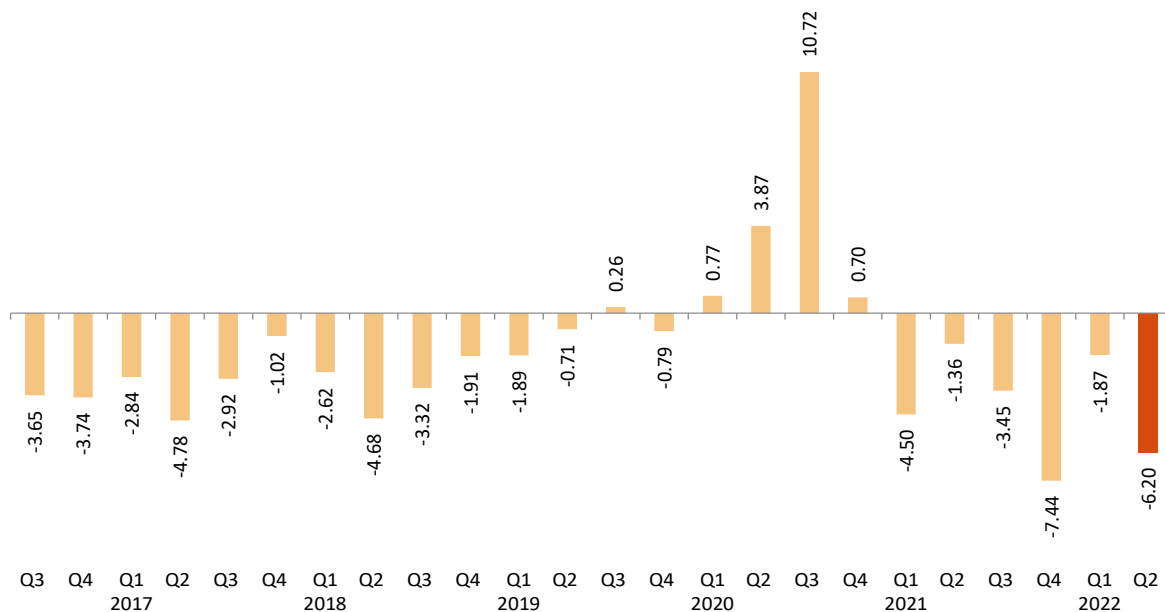
In the second quarter of 2022, the quarterly variation rate of employment adjusted for seasonal effects was 0.61%.

### Quarterly variation rate of seasonally adjusted employment. Percentage.



As regards seasonally-adjusted unemployment results, there was a decrease of 6.20%.

### Quarterly variation rate of seasonally adjusted unemployment. Percentage.



As explained in the methodology used for seasonal adjustment, the seasonal adjustment model is maintained for a year, with the first quarters corresponding to the time of the model's re-identification, but the coefficients are recalculated quarterly, so that each quarter the previous results are reviewed (either by re-identification or by revision of coefficients) and therefore the latest series available must always be consulted.

The series of the quarterly variation rates of the seasonally adjusted results of employment and unemployment since 2005 and the description of the method used can be found in:

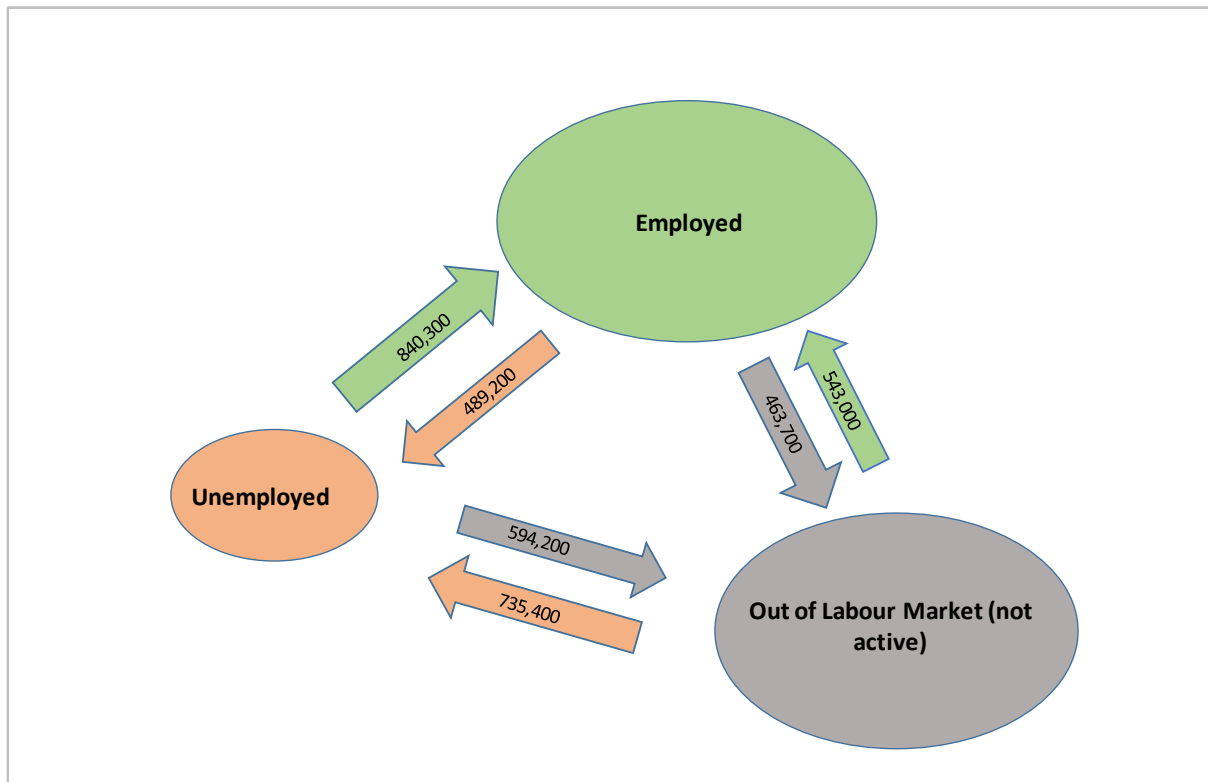
[http://www.ine.es/daco/daco42/daco4211/epa\\_desestacional.xlsx](http://www.ine.es/daco/daco42/daco4211/epa_desestacional.xlsx)

### Flows in absolute values with respect to the previous quarter<sup>5</sup>

This quarter has seen an increase in flows towards employment, from both those who were unemployed and those who were economically inactive in the previous quarter. An increase in the incorporation of economically inactive people can also be observed in the quarter prior to unemployment in this quarter.

**Flow of persons by labor status from Q1-2022 to Q2-2022** Number of persons.

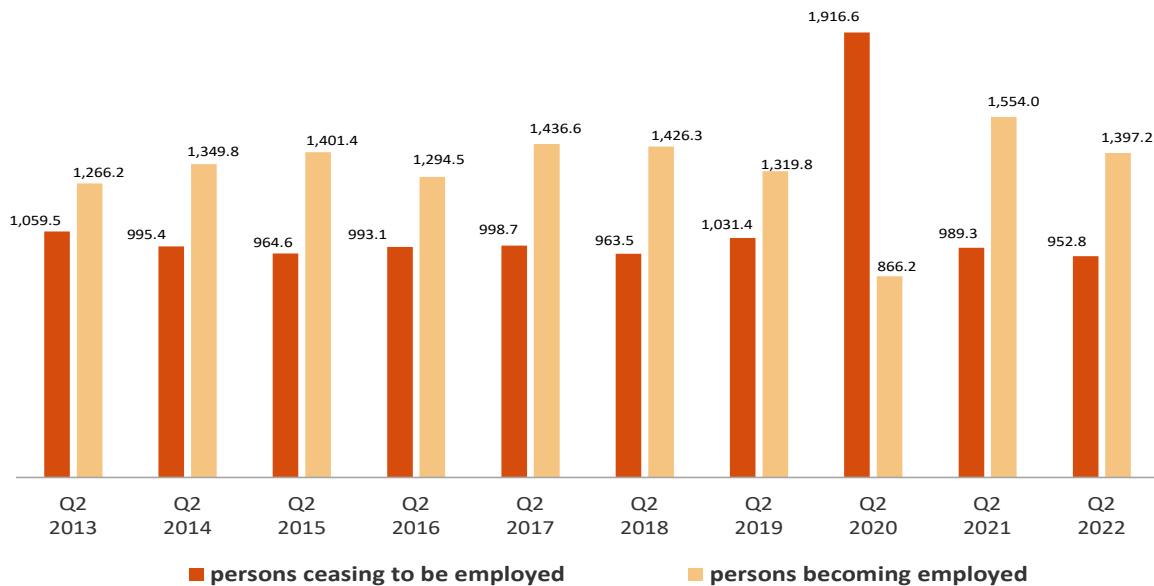
<sup>5</sup> This section compiles the results of the Economically Active Population Flow Statistics. Due to the methodology used in preparation, the results might not match the net balances of quarterly EAPS. The differences are caused by the "no data recorded" groups (persons turning 16 years old in the change between one quarter and the next and those who did not live in Spain in the previous quarter).



The total inflow to employment in the second quarter of 2022 was 1,397,200 people, a figure 156,800 lower than that registered in the same quarter of the previous year.

On the other hand, the outflow from employment was 952,800 people, which is 36,500 less than in the same quarter of 2021.

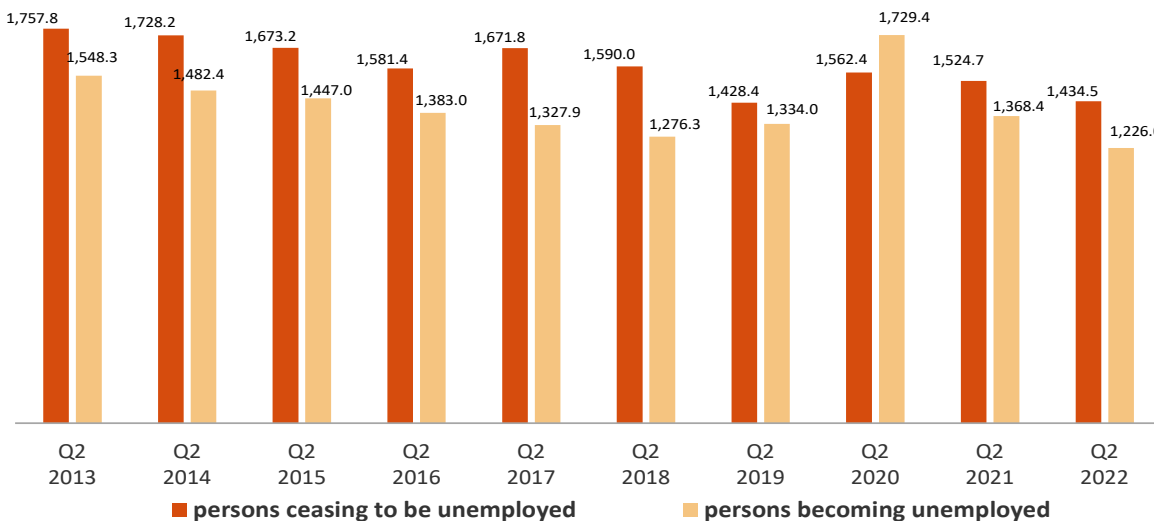
**Flows of persons becoming and ceasing to be employed each quarter. Thousands.**



The number of persons who were unemployed three months ago but are not currently unemployed stood at 1,434,500, which is 90,200 fewer persons than in the same period in 2021.

However, the total inflow to unemployment reached 1,226,000 people, which is 142,400 fewer persons than in the same quarter of 2021.

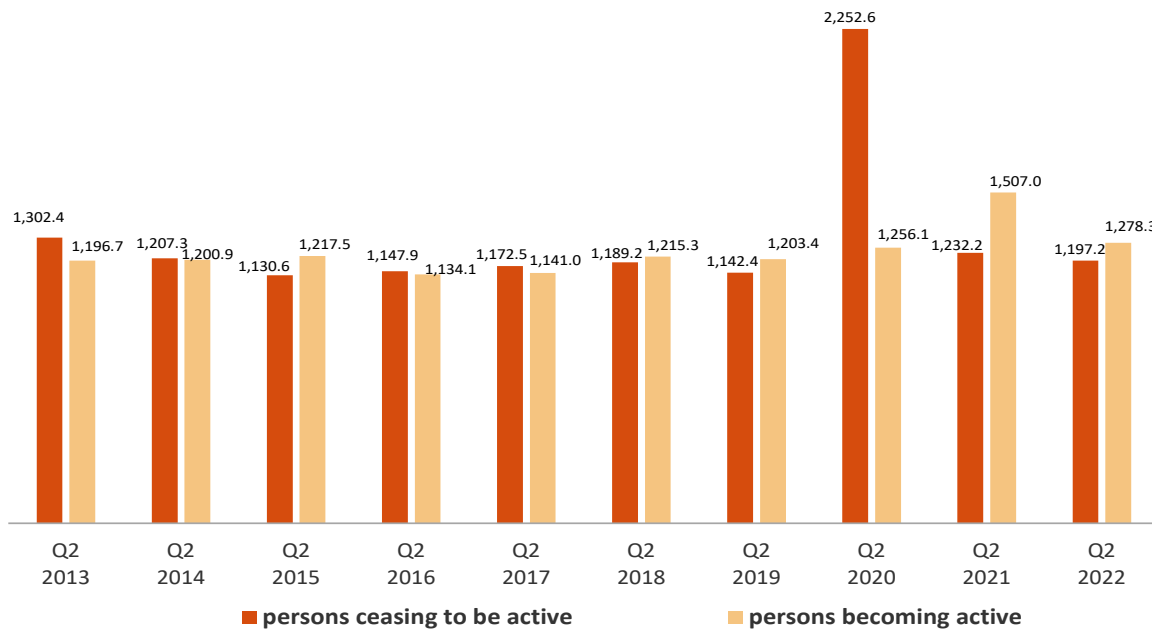
**Flows of persons becoming and ceasing to be unemployed each quarter. Thousands.**



The inflow to activity in this second quarter was 1,278,300, a figure 228,700 lower than that of the same period in 2021.

Meanwhile, a total of 1,197,200 people have left the activity this quarter, compared to 1,232,200 who did so during the same quarter in the previous year (that is, 35,000 less).

Flows of persons becoming and ceasing to be active each quarter. Thousands.



The outflow from employment to inactivity of people aged 60 and over was 92,500 this quarter. This figure is 800 persons higher than the one observed in the same period of 2021.

The number of people under 25 who have entered employment directly from inactivity this quarter stood at 190,000, a figure 32,500 persons higher than that observed in the same quarter of 2021.

The flow data on which these comments are based can be found in the annex to this press release [https://www.ine.es/en/daco/daco42/daco4211/epafluj0222\\_en.xlsx](https://www.ine.es/en/daco/daco42/daco4211/epafluj0222_en.xlsx)

## EAPS results by province

The provincial results summary of the EAPS may be accessed via the following link:

[http://www.ine.es/daco/daco42/daco4211/epapro0222\\_en.pdf](http://www.ine.es/daco/daco42/daco4211/epapro0222_en.pdf)

All the provincial information can also be accessed from the INEbase database:

<https://www.ine.es/dynt3/inebase/en/index.html?padre=996>

## Data Review and Update

The data published today are final. All results are available on INEBase.

## Methodological note

The Labour Force Survey (EAPS) has been carried out since 1964. The methodology currently used was put in place in 2021, and adapts the previous methodology (begun in 2005) to the new regulations of the European Labour Force Survey.

It is a continuous, quarterly research addressed to families, whose main purpose is to obtain data on the labour force and its various categories (employed, unemployed), as well as on the population outside the labour market (inactive).

As of the third quarter of 2009, the survey includes an additional sample in Galicia that is collected by the Galician Statistics Institute (IGE) using the same fieldwork system and methodology as the INE.

**Type of survey:** quarterly continuous survey.

**Population scope:** population residing in family dwellings.

**Geographical scope:** the entire national territory.

**Reference period of the results:** the quarter.

**Reference period of the information:** the week before the interview.

**Sample size:** 3,822 census tracts, around 65,000 dwellings and 160,000 people. Of the 3,822 tracts, 234 correspond to the additional sample of Galicia.

Gradually the number of sections will increase to a total of 5,298 in 2024, of which 288 correspond to the additional sample from Galicia. The number of homes selected per section will go from an average of 20 to 14.

**Type of sampling:** two-stage sampling with stratification in the first stage units. The first stage units are the census tracts and the second stage units are the inhabited family dwellings.

**Collection method:** personal, telephone, and web interview.

For more information, the methodology and technical details of the survey design and data quality assessment can be accessed at:

[https://www.ine.es/dyns/INEbase/en/operacion.htm?c=Estadistica\\_C&cid=1254736176918&menu=metodologia&idp=1254735976595](https://www.ine.es/dyns/INEbase/en/operacion.htm?c=Estadistica_C&cid=1254736176918&menu=metodologia&idp=1254735976595)

The standardized methodological report is at:

[Standardized Methodological Report \(ine.es\)](#)

INE statistics are produced in accordance with the Code of Good Practice for European Statistics, which is the basis for the institution's quality policy and strategy. Para más información, véase la sección de [Calidad en el INE y Código de Buenas Prácticas](#) en la página web del INE

The Statistics on Economically Active Population Flows (EAPFS) collect information regarding the follow-up of the population, or specific groups thereof, between one quarter and the previous one in absolute values, regarding its relation with labour market. This information links the interviewee's situations in two moments of time on the basis of the EAPS in order to study its evolution.

Given that in the EAPS sample one sixth is renewed each quarter and the remaining 5/6 parts are kept fixed between two consecutive quarters, the common part of the sample between the two conducts of the survey is used to obtain flow statistics from the questions relating to the situation in which the interviewee was in the current and previous quarters.

**Type of survey:** quarterly exploitation of the common EAPS sample between consecutive quarters that provides estimates in absolute values of the relation with the activity in the current period compared with that of the previous quarter.

**Population scope:** population residing in family dwellings.

**Geographical scope:** the entire national territory.

**Reference period of the results:** the quarter.

**Reference period of the information:** the week before the interview.

**Sample size:** 3,822 census tracts. The common EAPS sample between consecutive quarters is approximately 100,000 people aged 16 and older. Gradually the number of sections will increase to a total of 5,298 in 2024, of which 288 correspond to the additional sample from Galicia. The number of homes selected per section will go from an average of 20 to 14.

**Type of sampling:** two-stage sampling with stratification in the first stage units. The first stage units are the census tracts and the second stage units are the inhabited family dwellings.

**Collection method:** personal and telephone interview.

For more information the methodology can be accessed at:  
[metoflows absolute values en.pdf \(ine.es\)](#)

The standardized methodological report is at:  
[Standardized Methodological Report \(ine.es\)](#)

---

For further information see **INEbase:** [www.ine.es/en/](http://www.ine.es/en/) Twitter: [@es\\_ine](https://twitter.com/es_ine)

All press releases at: [www.ine.es/en/prensa/prensa\\_en.htm](http://www.ine.es/en/prensa/prensa_en.htm)

**Press office:** Telephone numbers: (+34) 91 583 93 63 /94 08 – [gprensa@ine.es](mailto:gprensa@ine.es)

**Information Area:** Telephone number: (+34) 91 583 91 00 – [www.ine.es/infoine/?L=1](http://www.ine.es/infoine/?L=1)

---



## Economically Active Population Survey Second Quarter 2022

### National results

(Continues)

	Current quarter	Variation on previous quarter		Variation on same quarter, previous year	
		Difference	Percentage	Difference	Percentage
<b>1. Population aged 16 years and over by sex and labour status</b>					
<b>BOTH SEXES</b>					
<b>Population aged 16 years and over</b>	39,833.1	71.5	0.18	200.0	0.50
Active population	23,387.4	128.0	0.55	171.9	0.74
- Employed persons	20,468.0	383.3	1.91	796.4	4.05
- Unemployed persons	2,919.4	-255.3	-8.04	-624.4	-17.62
Inactive population	16,445.7	-56.5	-0.34	28.0	0.17
Activity rate	58.71	0.22	-	0.14	-
Unemployment rate	12.48	-1.17	-	-2.78	-
<b>Population aged 16 to 64 years</b>	30,590.6	33.9	0.11	31.0	0.10
Activity rate (16-64)	75.42	0.36	-	0.42	-
Unemployment rate (16-64)	12.57	-1.17	-	-2.82	-
Employment rate (16-64)	65.93	1.20	-	2.47	-
<b>MALES</b>					
<b>Population aged 16 years and over</b>	19,350.1	38.3	0.20	90.1	0.47
Active population	12,331.9	63.3	0.52	83.9	0.68
- Employed persons	10,976.6	185.3	1.72	368.1	3.47
- Unemployed persons	1,355.3	-121.9	-8.26	-284.2	-17.34
Inactive population	7,018.2	-25.1	-0.36	6.2	0.09
Activity rate	63.73	0.20	-	0.14	-
Unemployment rate	10.99	-1.05	-	-2.40	-
<b>Population aged 16 to 64 years</b>	15,277.7	21.1	0.14	11.5	0.08
Activity rate (16-64)	79.57	0.36	-	0.46	-
Unemployment rate (16-64)	11.05	-1.07	-	-2.45	-
Employment rate (16-64)	70.78	1.17	-	2.34	-
<b>FEMALES</b>					
<b>Population aged 16 years and over</b>	20,483.0	33.2	0.16	109.9	0.54
Active population	11,055.5	64.7	0.59	88.1	0.80
- Employed persons	9,491.4	198.0	2.13	428.3	4.73
- Unemployed persons	1,564.1	-133.3	-7.86	-340.2	-17.86
Inactive population	9,427.5	-31.5	-0.33	21.8	0.23
Activity rate	53.97	0.23	-	0.14	-
Unemployment rate	14.15	-1.30	-	-3.22	-
<b>Population aged 16 to 64 years</b>	15,312.8	12.9	0.08	19.5	0.13
Activity rate (16-64)	71.27	0.36	-	0.38	-
Unemployment rate (16-64)	14.27	-1.28	-	-3.23	-
Employment rate (16-64)	61.10	1.22	-	2.61	-

### 2. Spanish population<sup>(1)</sup> aged 16 years and over by labour status

<b>SPANISH POPULATION AGED 16 YEARS AND OVER</b>	35,268.9	11.5	0.03	97.4	0.28
Active population	20,196.3	78.9	0.39	122.8	0.61
- Employed persons	17,880.7	267.9	1.52	604.7	3.50
- Unemployed persons	2,315.6	-189.0	-7.55	-481.9	-17.23
Inactive population	15,072.6	-67.3	-0.44	-25.3	-0.17
Activity rate	57.26	0.20	-	0.19	-
Unemployment rate	11.47	-0.98	-	-2.47	-

<sup>(1)</sup> including dual nationality

28 July 2022

**National results**

(Continuation)

	Current quarter	Variation on previous quarter		Variation on same quarter, previous year	
		Difference	Percentage	Difference	Percentage
<b>3. Foreign population aged 16 years and over by labour status</b>					
FOREIGN POPULATION AGED 16 YEARS AND OVER	4,564.2	59.9	1.33	102.5	2.30
Active population	3,191.2	49.1	1.56	49.2	1.56
- Employed persons	2,587.4	115.4	4.67	191.7	8.00
- Unemployed persons	603.8	-66.3	-9.90	-142.5	-19.10
Inactive population	1,373.1	10.8	0.79	53.4	4.04
Activity rate	69.92	0.16	-	-0.50	-
Unemployment rate	18.92	-2.41	-	-4.83	-
<b>4. Employed persons by sex, age group and economic sector</b>					
BOTH SEXES	20,468.0	383.3	1.91	796.4	4.05
16 to 19 years	151.8	9.8	6.92	34.5	29.41
20 to 24 years	1,022.3	102.4	11.13	180.8	21.48
25 to 29 years	1,797.9	86.8	5.07	138.6	8.35
30 to 34 years	2,091.5	40.0	1.95	70.5	3.49
35 to 39 years	2,371.4	-2.1	-0.09	-24.7	-1.03
40 to 44 years	2,987.9	3.4	0.12	-69.5	-2.27
45 to 49 years	3,160.0	32.5	1.04	136.3	4.51
50 to 54 years	2,786.4	40.8	1.48	92.6	3.44
55 and over	4,098.8	69.8	1.73	237.3	6.15
MALES	10,976.6	185.3	1.72	368.1	3.47
16 to 19 years	82.1	0.7	0.92	9.5	13.15
20 to 24 years	555.8	63.7	12.93	103.2	22.80
25 to 29 years	944.6	64.8	7.37	90.0	10.53
30 to 34 years	1,085.6	8.6	0.80	17.6	1.64
35 to 39 years	1,244.1	-12.7	-1.01	-22.8	-1.80
40 to 44 years	1,596.6	-4.6	-0.29	-38.4	-2.35
45 to 49 years	1,717.0	9.8	0.57	61.6	3.72
50 to 54 years	1,514.4	21.4	1.43	23.1	1.55
55 and over	2,236.3	33.6	1.53	124.4	5.89
FEMALES	9,491.4	198.0	2.13	428.3	4.73
16 to 19 years	69.7	9.1	14.97	25.0	55.80
20 to 24 years	466.5	38.7	9.05	77.6	19.95
25 to 29 years	853.3	21.9	2.64	48.6	6.03
30 to 34 years	1,005.9	31.4	3.23	53.0	5.56
35 to 39 years	1,127.3	10.6	0.95	-1.8	-0.16
40 to 44 years	1,391.3	8.0	0.58	-31.1	-2.19
45 to 49 years	1,442.9	22.7	1.60	74.7	5.46
50 to 54 years	1,272.0	19.4	1.55	69.5	5.78
55 and over	1,862.5	36.2	1.98	112.9	6.45
TOTAL EMPLOYED PERSONS	20,468.0	383.3	1.91	796.4	4.05
Agriculture	789.3	-38.4	-4.63	-21.7	-2.68
Industry	2,776.6	79.5	2.95	111.5	4.18
Construction	1,338.2	21.9	1.67	13.4	1.01
Services	15,563.9	320.2	2.10	693.3	4.66

## National results

(Continuation)

	Current quarter	Variation on previous quarter		Variation on same quarter, previous year	
		Difference	Percentage	Difference	Percentage
<b>5. Employed persons by professional status, type of contract, public / private sectors and working hours</b>					
TOTAL EMPLOYED PERSONS	20,468.0	383.3	1.91	796.4	4.05
BY PROFESSIONAL STATUS					
Self-employed persons	3,152.3	10.0	0.32	0.6	0.02
- Employers	1,004.7	34.7	3.58	72.1	7.73
- Independent workers	2,042.1	-42.1	-2.02	-65.5	-3.11
- Cooperative members	27.7	0.4	1.41	-1.1	-3.73
- Family workers	77.8	17.0	27.99	-4.8	-5.86
Employees	17,303.9	375.4	2.22	796.5	4.83
- With a permanent job	13,446.5	616.7	4.81	1,076.3	8.70
- With a temporary job	3,857.4	-241.3	-5.89	-279.8	-6.76
Others	11.8	-2.1	-15.26	-0.8	-6.16
BY PUBLIC / PRIVATE SECTORS					
Public sector employed persons	3,453.9	-14.3	-0.41	14.3	0.42
Private sector employed persons	17,014.2	397.6	2.39	782.1	4.82
BY WORKING HOURS					
Full-time employed persons	17,649.8	374.3	2.17	813.5	4.83
Males	10,229.9	135.9	1.35	350.8	3.55
Females	7,419.8	238.4	3.32	462.7	6.65
Part-time employed persons	2,818.3	9.0	0.32	-17.1	-0.60
Males	746.7	49.4	7.09	17.4	2.38
Females	2,071.6	-40.4	-1.91	-34.5	-1.64

(\*) Private employment includes all persons in employment other than public employees. Namely: private employees, employers, independent workers, cooperative members, family workers and other professional status.

## 6. Unemployed persons by sex, age group, and economic sector

BOTH SEXES	2,919.4	-255.3	-8.04	-624.4	-17.62
16 to 19 years	144.0	20.9	16.99	-8.7	-5.73
20 to 24 years	324.6	-11.5	-3.41	-119.9	-26.98
25 to 54 years	1,907.6	-245.1	-11.39	-474.8	-19.93
55 and over	543.3	-19.6	-3.49	-20.9	-3.71
MALES	1,355.3	-121.9	-8.26	-284.2	-17.34
16 to 19 years	80.1	15.8	24.62	0.2	0.26
20 to 24 years	164.9	-19.9	-10.77	-64.6	-28.14
25 to 54 years	849.7	-109.2	-11.39	-211.2	-19.91
55 and over	260.6	-8.6	-3.20	-8.7	-3.22
FEMALES	1,564.1	-133.3	-7.86	-340.2	-17.86
16 to 19 years	63.9	5.1	8.65	-8.9	-12.29
20 to 24 years	159.7	8.5	5.59	-55.3	-25.74
25 to 54 years	1,057.9	-135.9	-11.38	-263.6	-19.95
55 and over	282.6	-11.0	-3.75	-12.3	-4.16
TOTAL UNEMPLOYED PERSONS	2,919.4	-255.3	-8.04	-624.4	-17.62
Agriculture	144.8	-10.0	-6.44	-20.9	-12.60
Industry	138.2	-18.1	-11.59	-13.2	-8.75
Construction	116.2	0.4	0.37	-2.8	-2.36
Services	983.3	-120.7	-10.93	-61.2	-5.86
Lost their job more than 1 year ago	1,225.3	-99.1	-7.48	-454.6	-27.06
First job seekers	311.7	-7.9	-2.47	-71.7	-18.70

## National results

(Conclusion)

	Current quarter	Variation on previous quarter		Variation on same quarter, previous year	
		Difference	Percentage	Difference	Percentage

### 7. Unemployment rate by relationship with the reference person

	Current quarter	Variation on previous quarter	Percentage	Variation on same quarter, previous year	Percentage
TOTAL	12.48	-1.17	-	-2.78	-
Reference person	10.93	-0.61	-	-1.44	-
Spouse or partner	9.82	-1.18	-	-1.91	-
Child	21.68	-2.28	-	-7.30	-
Other relatives	16.69	-4.10	-	-5.94	-
Unrelated persons	10.98	-3.08	-	-2.36	-

### 8. Household data

	Current quarter	Variation on previous quarter	Percentage	Variation on same quarter, previous year	Percentage
TOTAL HOUSEHOLDS	19,080.1	40.6	0.21	183.6	0.97
Households with at least one active member	13,765.1	14.8	0.11	166.9	1.23
- All members employed	11,247.1	197.4	1.79	645.5	6.09
- All members unemployed	990.3	-62.6	-5.95	-167.6	-14.47
Households without any active population	5,315.0	25.8	0.49	16.7	0.31

## Mobility according to activity in current and previous quarter

Classification in previous quarter	Classification in current quarter			
	Total	Employed	Unemployed persons	Inactive
<b>BOTH SEXES</b>				
Total	39,833.1	20,468.0	2,919.4	16,445.7
Employed persons	20,023.6	19,070.8	489.2	463.7
Unemployed persons	3,128.0	840.3	1,693.5	594.2
Inactive	16,526.8	543.0	735.4	15,248.5
Not classifiable	154.7	13.9	1.4	139.3
<b>MALES</b>				
Total	19,342.1	10,993.2	1,363.9	6,985.0
Employed persons	10,807.3	10,330.9	256.6	219.8
Unemployed persons	1,451.7	403.4	809.3	239.0
Inactive	7,006.3	250.2	298.0	6,458.1
Not classifiable	76.9	8.7	0.0	68.2
<b>FEMALES</b>				
Total	20,491.0	9,474.8	1,555.6	9,460.7
Employed persons	9,216.3	8,739.9	232.5	243.9
Unemployed persons	1,676.3	436.9	884.2	355.2
Inactive	9,520.5	292.8	437.4	8,790.4
Not classifiable	77.8	5.2	1.4	71.2

Weighting factors of current quarter (backward analysis)

## Results by autonomous community and autonomous city

(Continues)

	Current quarter	Variation on previous quarter		Variation on same quarter, previous year	
		Difference	Percentage	Difference	Percentage
<b>1. Population aged 16 years and over</b>					
TOTAL	39,833.1	71.5	0.18	200.0	0.50
Andalucía	7,098.4	16.0	0.23	52.2	0.74
Aragón	1,095.2	-0.6	-0.06	-5.5	-0.50
Asturias, Principado de	882.1	0.0	0.00	1.2	0.14
Balears, Illes	1,032.0	2.9	0.28	7.6	0.74
Canarias	1,951.0	4.8	0.25	18.0	0.93
Cantabria	500.9	1.1	0.22	3.1	0.63
Castilla y León	2,029.4	-0.2	-0.01	-6.4	-0.31
Castilla-La Mancha	1,707.4	6.8	0.40	12.2	0.72
Cataluña	6,364.0	6.1	0.10	5.8	0.09
Comunitat Valenciana	4,273.8	18.7	0.44	34.3	0.81
Extremadura	893.1	0.5	0.06	-0.2	-0.02
Galicia	2,341.6	1.4	0.06	1.0	0.04
Madrid, Comunidad de	5,639.5	12.2	0.22	55.3	0.99
Murcia, Región de	1,252.2	4.0	0.32	15.4	1.25
Navarra, Comunidad Foral de	546.1	1.8	0.33	5.3	0.98
País Vasco	1,835.8	-3.7	-0.20	2.1	0.11
Rioja, La	264.0	0.4	0.16	-0.5	-0.19
Ceuta	64.9	-0.7	-1.02	-0.2	-0.25
Melilla	61.6	-0.2	-0.27	-1.0	-1.67

## 2. Active population

TOTAL	23,387.4	128.0	0.55	171.9	0.74
Andalucía	4,031.7	38.0	0.95	8.9	0.22
Aragón	645.2	-4.0	-0.62	2.1	0.33
Asturias, Principado de	431.0	-8.8	-2.01	-19.0	-4.22
Balears, Illes	675.1	25.8	3.97	12.2	1.85
Canarias	1,154.4	-1.4	-0.12	54.3	4.94
Cantabria	274.6	3.1	1.14	-1.6	-0.59
Castilla y León	1,121.7	11.8	1.07	17.6	1.59
Castilla-La Mancha	1,013.2	13.7	1.37	6.9	0.68
Cataluña	3,881.5	30.1	0.78	-14.1	-0.36
Comunitat Valenciana	2,486.5	12.9	0.52	27.8	1.13
Extremadura	497.8	7.3	1.49	1.3	0.27
Galicia	1,244.7	12.3	0.99	15.6	1.27
Madrid, Comunidad de	3,597.3	1.5	0.04	43.3	1.22
Murcia, Región de	750.5	7.3	0.98	3.7	0.49
Navarra, Comunidad Foral de	320.6	-1.9	-0.58	4.3	1.37
País Vasco	1,024.5	-19.5	-1.86	8.7	0.85
Rioja, La	159.1	1.0	0.63	-1.8	-1.12
Ceuta	39.2	-0.9	-2.14	2.5	6.78
Melilla	38.9	-0.3	-0.80	-0.6	-1.50

\* Data below 5000 are subject to strong variations, due to sampling error

## Results by autonomous community and autonomous city

(Conclusion)

	Current quarter	Variation on previous quarter		Variation on same quarter, previous year	
		Difference	Percentage	Difference	Percentage
<b>3. Employed persons</b>					
TOTAL	20,468.0	383.3	1.91	796.4	4.05
Andalucía	3,278.5	60.7	1.89	123.8	3.92
Aragón	587.4	4.0	0.69	13.3	2.32
Asturias, Principado de	382.0	-5.2	-1.34	-6.6	-1.69
Balears, Illes	612.4	80.2	15.06	50.1	8.91
Canarias	949.4	28.1	3.05	121.1	14.62
Cantabria	252.1	9.2	3.80	10.2	4.23
Castilla y León	1,007.3	20.5	2.08	42.3	4.38
Castilla-La Mancha	870.3	13.4	1.56	30.8	3.67
Cataluña	3,521.0	63.8	1.84	103.9	3.04
Comunitat Valenciana	2,167.9	12.1	0.56	119.0	5.81
Extremadura	414.5	17.1	4.30	13.1	3.27
Galicia	1,105.2	13.9	1.27	28.5	2.65
Madrid, Comunidad de	3,231.0	61.2	1.93	106.8	3.42
Murcia, Región de	659.1	15.8	2.45	10.5	1.61
Navarra, Comunidad Foral de	292.5	3.7	1.28	8.8	3.12
País Vasco	934.9	-18.4	-1.93	20.7	2.27
Rioja, La	142.9	2.5	1.78	0.5	0.37
Ceuta	30.3	1.9	6.79	2.5	8.83
Melilla	29.3	-1.2	-4.03	-3.1	-9.47

## 4. Unemployed persons

TOTAL	2,919.4	-255.3	-8.04	-624.4	-17.62
Andalucía	753.2	-22.6	-2.92	-114.9	-13.24
Aragón	57.8	-8.0	-12.19	-11.2	-16.27
Asturias, Principado de	49.0	-3.6	-6.93	-12.4	-20.23
Balears, Illes	62.7	-54.4	-46.44	-37.9	-37.64
Canarias	205.0	-29.6	-12.60	-66.8	-24.57
Cantabria	22.4	-6.2	-21.52	-11.9	-34.61
Castilla y León	114.3	-8.7	-7.07	-24.7	-17.78
Castilla-La Mancha	142.9	0.3	0.22	-23.9	-14.33
Cataluña	360.5	-33.7	-8.54	-118.0	-24.66
Comunitat Valenciana	318.6	0.8	0.25	-91.2	-22.26
Extremadura	83.3	-9.8	-10.53	-11.8	-12.42
Galicia	139.4	-1.6	-1.14	-12.9	-8.49
Madrid, Comunidad de	366.3	-59.7	-14.02	-63.5	-14.78
Murcia, Región de	91.4	-8.5	-8.48	-6.8	-6.93
Navarra, Comunidad Foral de	28.1	-5.6	-16.56	-4.5	-13.81
País Vasco	89.7	-1.1	-1.20	-12.1	-11.87
Rioja, La	16.2	-1.5	-8.51	-2.3	-12.59
Ceuta	8.9	-2.8	-23.78	0.0	0.36
Melilla	9.6	0.9	10.56	2.5	(:)

\* Data below 5,000 are subject to strong variations, due to sampling error

## Results by autonomous community and autonomous city

(Absolute figures in thousands and rates in percentage)

### 5. Employed and unemployed persons by sex. Activity and unemployment rates

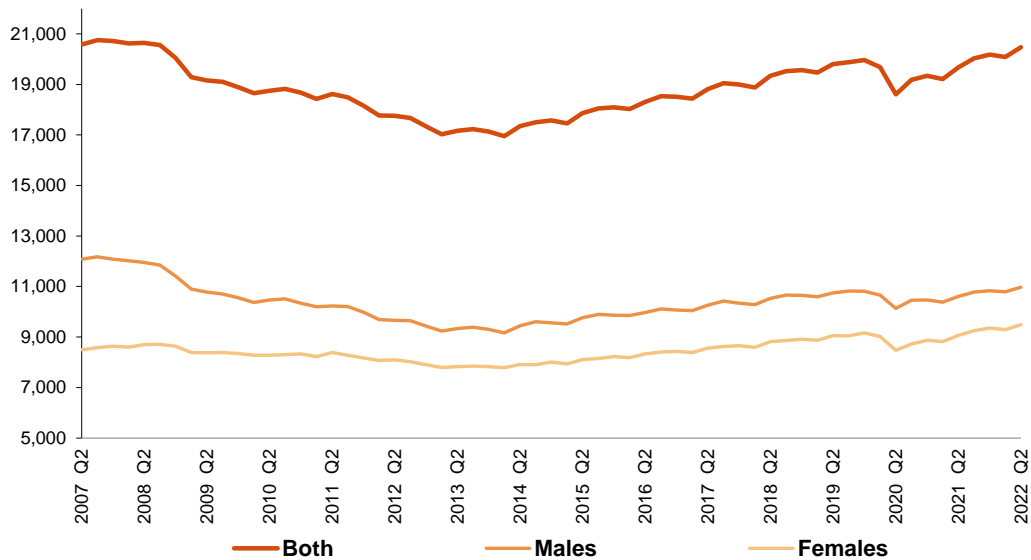
	Both sexes				Males				Females			
	Employed persons	Unemployed persons	Activity rate	Unem. rate	Employed persons	Unemployed persons	Activity rate	Unem. Rate	Employed persons	Unemployed persons	Activity rate	Unem. Rate
TOTAL	20,468.0	2,919.4	58.71	12.48	10,976.6	1,355.3	63.73	10.99	9,491.4	1,564.1	53.97	14.15
Andalucía	3,278.5	753.2	56.80	18.68	1,835.1	339.2	62.63	15.60	1,443.4	414.1	51.22	22.29
Aragón	587.4	57.8	58.91	8.96	313.0	24.5	62.94	7.25	274.4	33.3	55.04	10.83
Asturias, Principado de	382.0	49.0	48.86	11.36	201.0	24.8	54.14	10.98	181.0	24.2	44.12	11.78
Balears, Illes	612.4	62.7	65.42	9.29	326.4	28.4	69.51	8.00	286.0	34.3	61.41	10.71
Canarias	949.4	205.0	59.17	17.76	497.1	107.5	63.24	17.78	452.3	97.5	55.26	17.74
Cantabria	252.1	22.4	54.81	8.17	136.8	10.3	60.88	6.98	115.4	12.2	49.16	9.55
Castilla y León	1,007.3	114.3	55.27	10.19	539.0	53.5	59.35	9.03	468.4	60.8	51.32	11.49
Castilla-La Mancha	870.3	142.9	59.34	14.11	508.7	59.8	66.44	10.51	361.6	83.2	52.21	18.70
Cataluña	3,521.0	360.5	60.99	9.29	1,849.7	169.8	65.46	8.41	1,671.3	190.7	56.79	10.24
Comunitat Valenciana	2,167.9	318.6	58.18	12.81	1,175.4	148.1	63.55	11.19	992.6	170.5	53.08	14.66
Extremadura	414.5	83.3	55.74	16.73	234.1	38.2	61.95	14.04	180.4	45.1	49.72	19.98
Galicia	1,105.2	139.4	53.16	11.20	574.8	67.7	57.32	10.54	530.4	71.7	49.33	11.91
Madrid, Comunidad de	3,231.0	366.3	63.79	10.18	1,669.6	166.2	68.74	9.05	1,561.4	200.1	59.33	11.36
Murcia, Región de	659.1	91.4	59.93	12.18	365.9	42.8	65.54	10.48	293.2	48.6	54.37	14.21
Navarra, Comunidad Foral de	292.5	28.1	58.70	8.76	156.7	13.1	63.27	7.72	135.8	15.0	54.28	9.93
País Vasco	934.9	89.7	55.81	8.75	482.9	44.8	59.93	8.49	452.0	44.9	52.01	9.03
Rioja, La	142.9	16.2	60.27	10.19	75.8	8.5	65.20	10.05	67.1	7.7	55.54	10.35
Ceuta	30.3	8.9	60.44	22.75	18.9	4.2	69.46	18.33	11.4	4.7	50.93	29.11
Melilla	29.3	9.6	63.11	24.66	15.9	4.0	66.64	20.08	13.4	5.6	59.80	29.43

\* Data below 5,000 are subject to strong variations, due to sampling errors

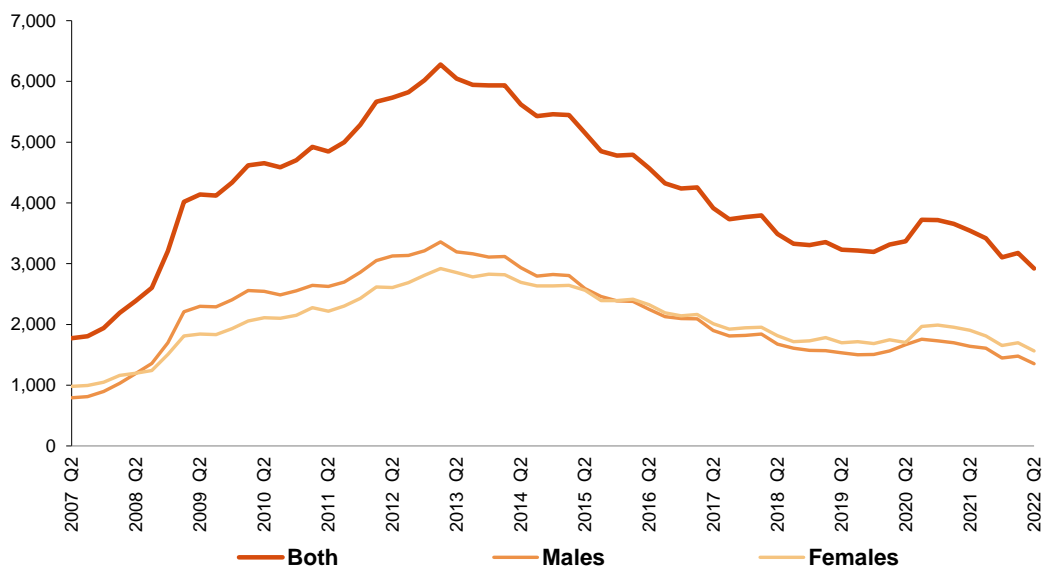
EAAPS - (ANNEX TO TABLES) Q2 2022 (7/7)

**Employed and Unemployed by sex** EAPS  
**Second Quarter 2022**

**Employed.** Thousands



**Unemployed.** Thousands

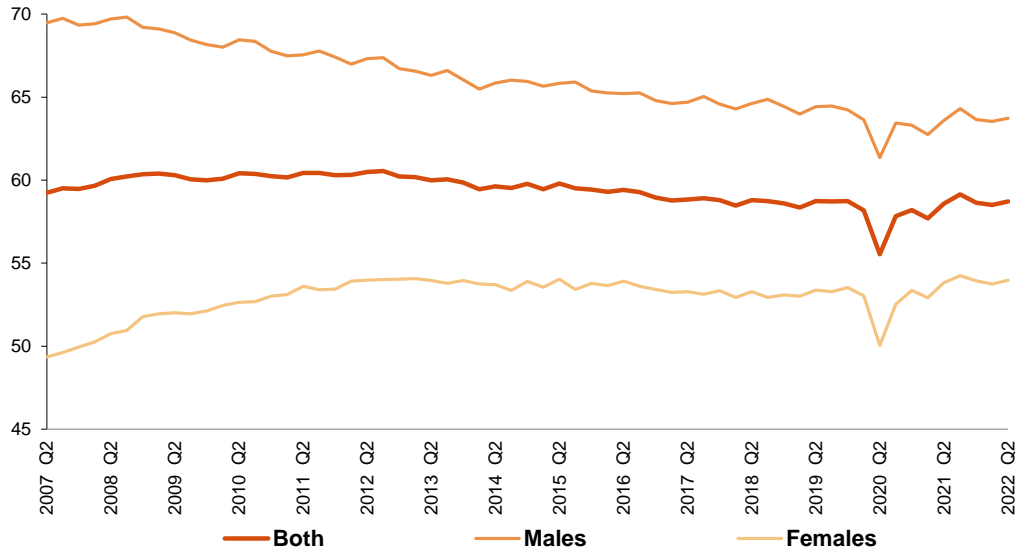




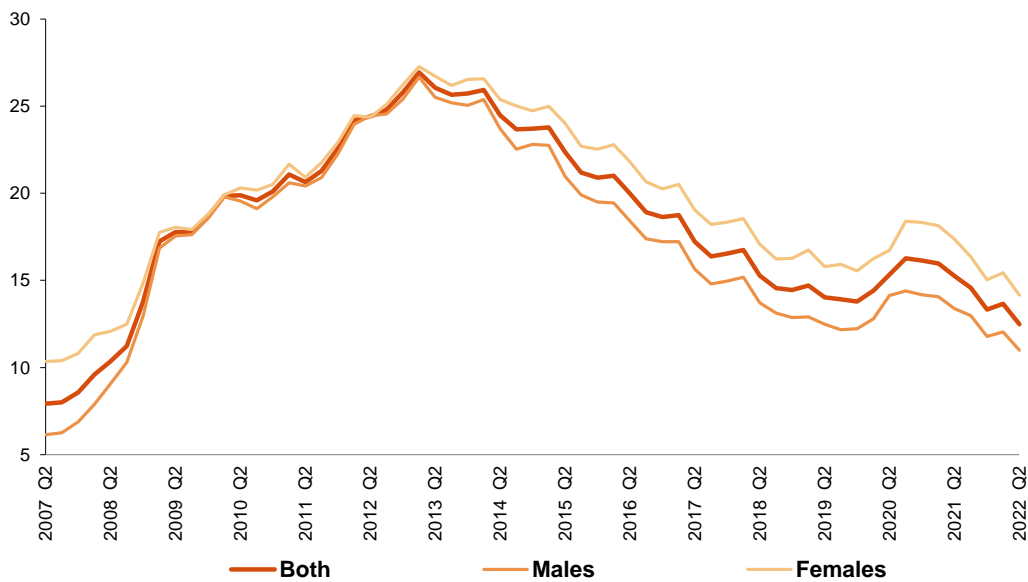
**Activity and unemployment rates by sex**  
Second Quarter 2022

EAPS

**Activity rate. Percentage**



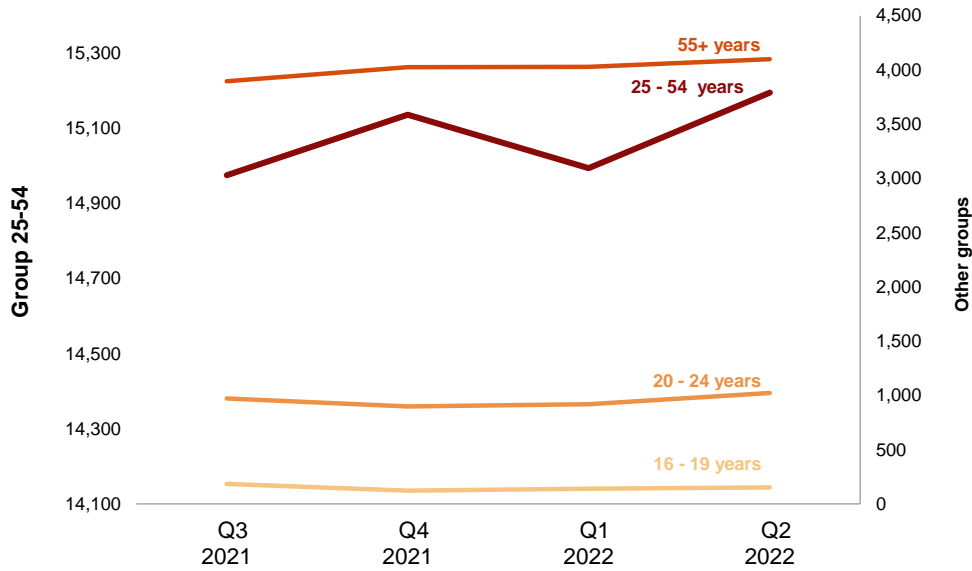
**Unemployment rate. Percentage**



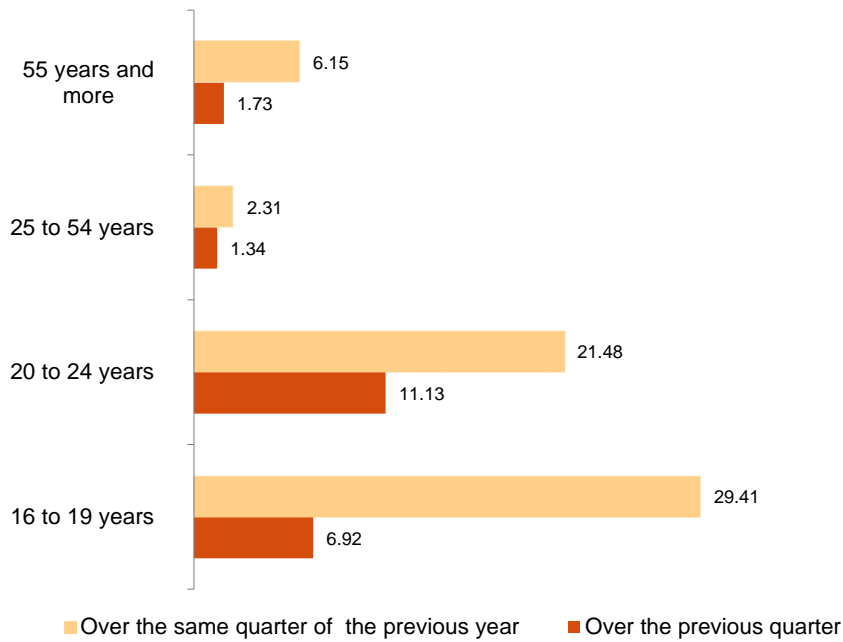
**Employment by age**  
Second Quarter 2022

EAPS

Employment. Thousands



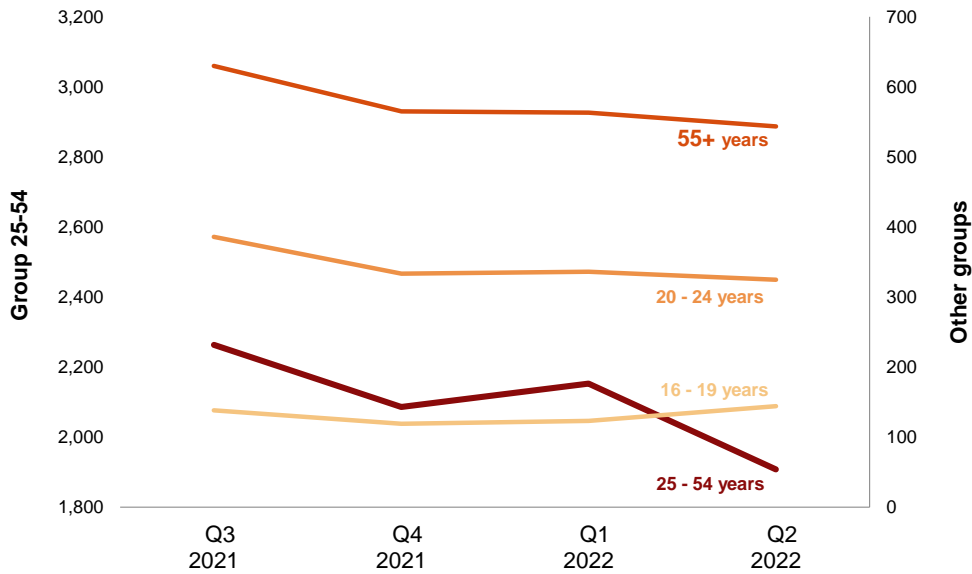
Variation of employment. Thousands



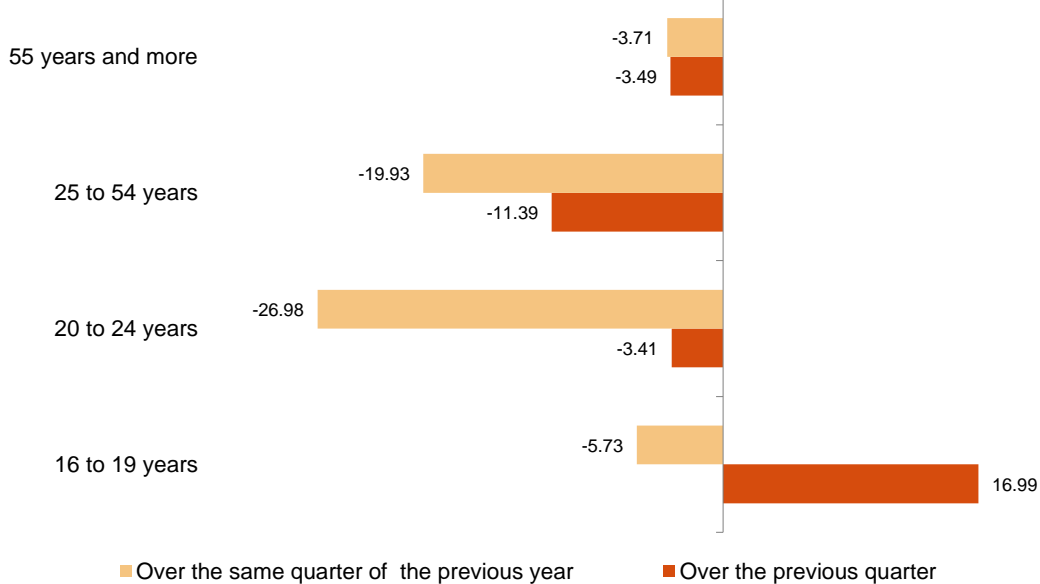
**Unemployment by age**  
Second Quarter 2022

EAPS

**Unemployment.** Thousands



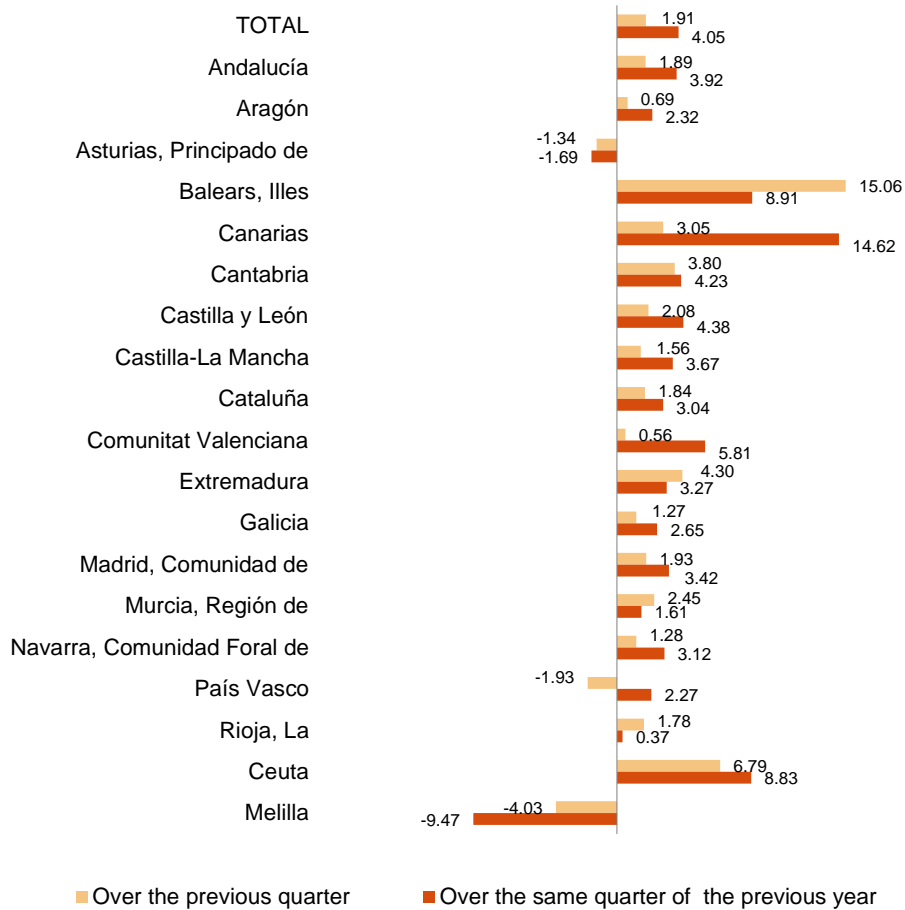
**Variation of unemployment.** Thousands



Second Quarter 2022

EAPS

**Variation of employment.** Percentage



**Unemployment rate** Percentage  
(Spain= 12.48 )

