

27 July 2023

## **Economically Active Population Survey (EAPS) Second Quarter 2023**

### **Main results**

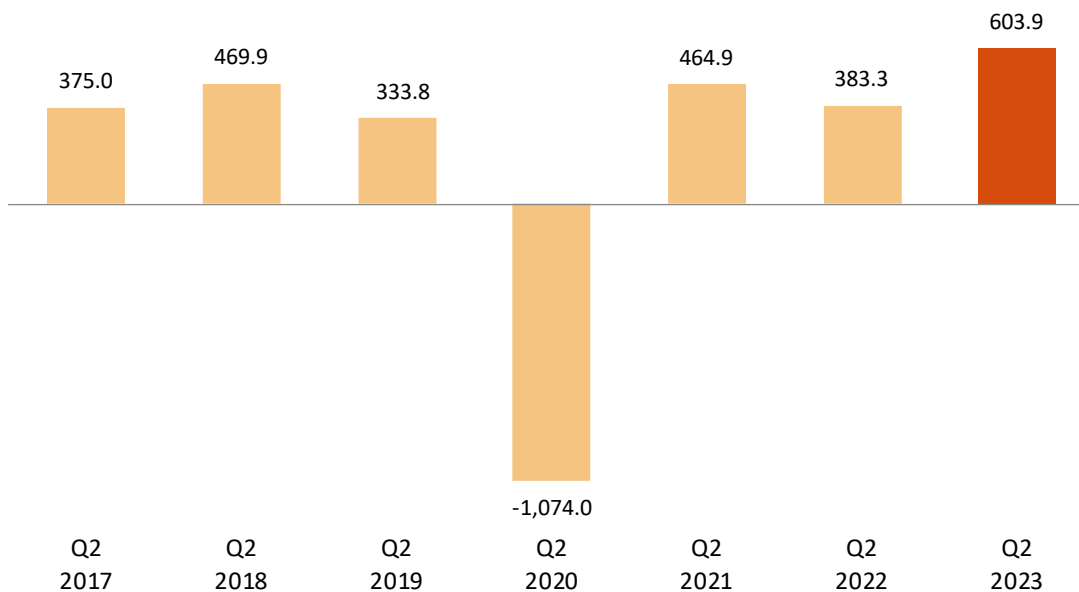
- The number of employed persons increased by 603,900 in the second quarter of 2023 compared with the first quarter (up 2.95%) and stands at 21,056,700, the highest figure since records of the survey began. In seasonally adjusted terms, the quarterly variation was 1.40%. Employment has grown by 588,700 persons (2.88%) in the last 12 months.
- This quarter, employment rose by 610,100 persons in the private sector, while it fell by 6,200 in the public sector. In the last twelve months, employment has increased by 524,800 persons in the private sector and 63,900 in the public sector.
- Salaried employees increased this quarter by 505,500. Those with a permanent contract increased by 410,100, while those with a temporary contract increased by 95,400. In terms of annual variation, the number of salaried employees increased by 549,800 (permanent employment increased by 1,314,100 persons while temporary employment fell by 764,300). The number of self-employed workers increased by 97,300 this quarter and by 44,000 in the last 12 months.
- In this quarter, employment increased in *Services*, by 606,000, in *Industry* by 60,900 and in *Agriculture* by 1,500 and decreased in *Industry* by 64,500 persons. In the last year employment rose in *Services* by 658,000 persons and in *Construction* by 20,800, while it decreased in *Industry* by 50,500 and in *Agriculture* by 39,600.
- This quarter, employment grew in all the Autonomous Communities. The greatest increases were in Cataluña (132,700 more unemployed persons), Illes Balears (108,100) and Comunidad de Madrid (77,300). Over the last year, employment also grew in all the Autonomous Communities. Cataluña (133,000 more), Andalucía (101,600) and Comunitat Valenciana (72,700) saw the biggest increases.
- The number of unemployed persons fell by 365,300 this quarter (-11.68%), standing at 2,762,500. In seasonally adjusted terms, the quarterly variation was -6.61%. Over the last 12 months, unemployment has decreased by 157,000 persons (-5.38%).
- The unemployment rate stands at 11.60%, 1.67 points below that of the previous quarter. Within the last year, this rate has decreased by 0.89.
- By communities, unemployment fell in all of them this quarter. Cataluña (- 70,400), Illes Balears (- 68,600) and Comunidad de Madrid (- 49,900) reported the largest falls. In annual terms, there has also been a general drop in unemployment, with the biggest reductions in Canarias (down 25,200), Cataluña (- 23,700) and Galicia (- 19,700).
- The number of economically active persons increased this quarter by 238,600, up to 23,819,200. The activity rate increased by 0.42, and now stands at 58.97%. Over the last year, the economically active population has increased by 431,700 persons.

## Employment

The number of employed persons decreased by 603,900 persons in the second quarter of 2023, and now stands at 21,056,700. This is the highest figure since records of the survey began. The quarterly employment variation rate is 2.95%.

The employment rate (percentage of employed persons in relation to the population aged 16 and over) is 52.13%, an increase of 1.35 points as compared to the previous quarter. In annual variation, the rate rose by 0.75.

**Quarterly variation of employment.** Thousands.  
(Q2 compared with Q1 of the same year)



By sex, employment increased this quarter by 332,200 men and 271,800 women. By nationality, employment increased by 469,200 persons among Spaniards<sup>1</sup> and by 134,800 among foreign nationals.

By age, employment grew this quarter in all groups, except those aged 40 to 44, where it was practically unchanged. The largest increase (98,800 more employed persons) occurred among people between 25 to 29 years of age.

In the past 12 months, employment has increased by 588,700 persons (280,500 men and 308,200 women). The annual variation rate of employment was 2.88%, representing an increase of 1.05 compared to the previous quarter.

<sup>1</sup> This includes those with dual nationality

## Annual variation rate of employment. Percentage.



Employment increased this quarter in *Services* (606,000 persons), *Construction* (60,900) and *Agriculture* (1,500), while it fell in *Industry* (64,500 fewer).

In the last year, employment grew in *Services* (658,000 persons) and in *Construction* (20,800). It decreased in *Industry* (50,500 fewer) and in *Agriculture* (39,600 fewer).

Full-time employment increased by 561,500 persons this quarter, and part-time employment by 42,500. The percentage of persons employed part-time decreased by 0.19, to 13.52%.

Over the last 12 months, full-time employment has increased by 559,200 persons and part-time employment by 29,500.

This quarter, the number of salaried employees increased by 505,500. Those with a permanent contract increased by 410,100, and those with a temporary contract by 95,400. The economic activity rate increased three hundredths, reaching 17.32%.

Over the last 12 months, the number of salaried employees has increased by 549,800. Permanent employment has increased by 1,314,100 persons, while temporary employment decreased by 764,300.

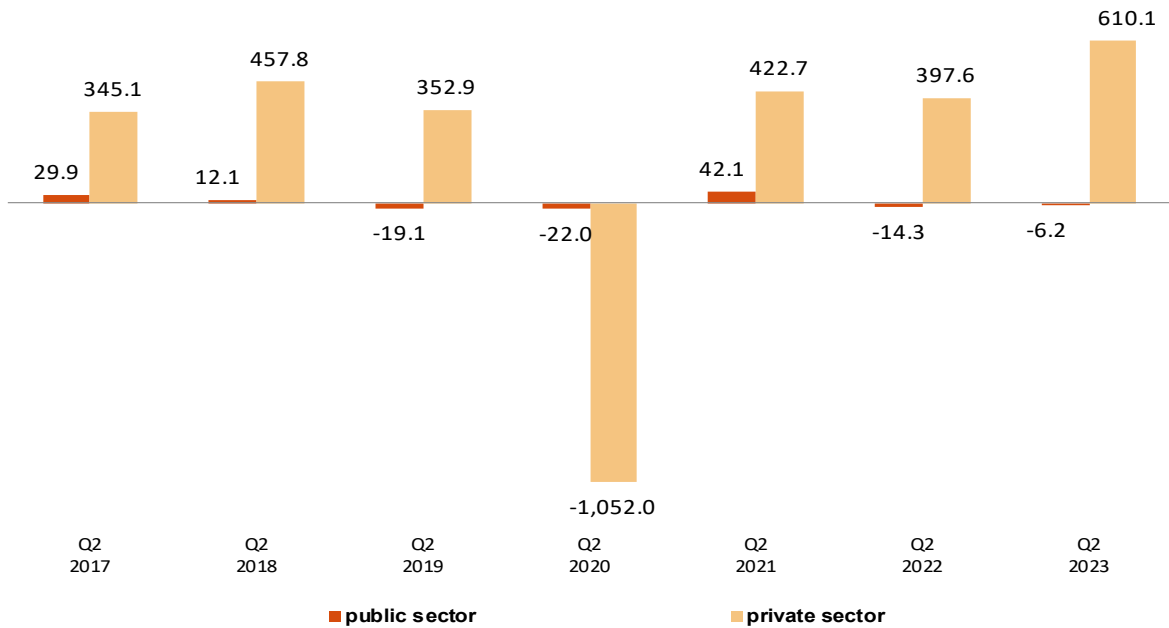
The number of self-employed persons increased by 97,300 persons in quarterly variation, and by 44,000 over the past year.

This quarter, private employment<sup>2</sup> increased by 610,100 persons, standing at 17,539,000. Public employment<sup>3</sup> decreased by 6,200 to 3,517,700.

<sup>2</sup> Employment in the private sector includes: wage-earners from the private sector, employers, independent workers and businesspersons without wage earners, members of a cooperative, family assistance and other professional situations.

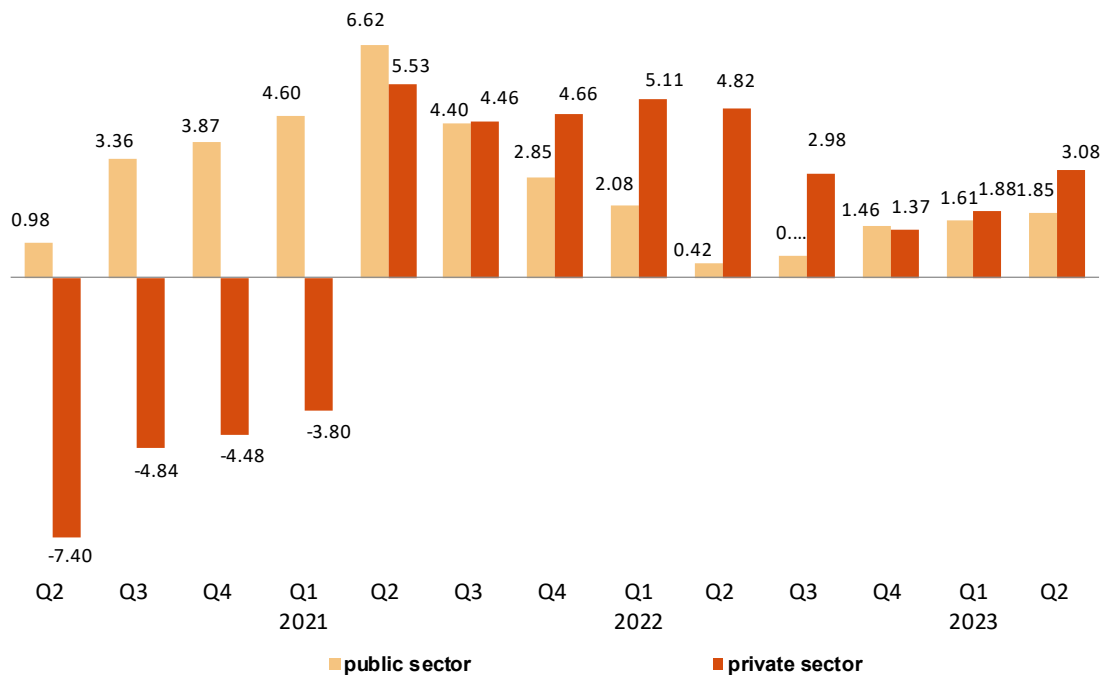
<sup>3</sup> Public sector employment includes all wage earners in public enterprises and in the National and Regional Administrations, including both workers contributing to Social Security and those affiliated with the Special Civil Service System.

**Quarterly variation of employment by nature of employer. Thousands.**  
(Q2 compared with Q1 of the same year)



Employment in the private sector showed an annual variation of 3.08%, and public employment 1.85%. In the past twelve months, employment has increased by 524,800 persons in the private sector and by 63,900 in the public sector.

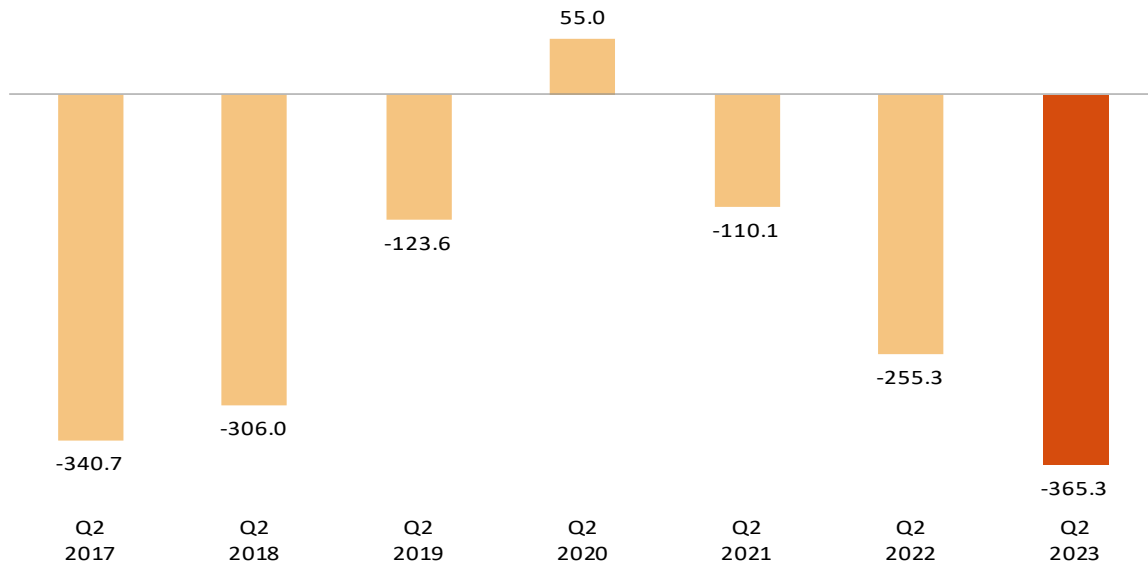
**Annual variation rate of employment by nature of employer. Percentage**



## Unemployment and unemployment rate

Unemployment fell by 365,300 persons this quarter. The total number of unemployed persons stood at 2,762,500. In relative terms, the quarterly variation of unemployment was -11.68%.

**Quarterly variation of unemployment.** Thousands.  
(Q2 compared with Q1 of the same year)



The unemployment rate increased by 1.67 this quarter to stand at 11.60%. In the last 12 months, this rate has decreased by 0.89.

By sex, the number of unemployed men decreased by 152,000 this quarter, to stand at 1,277,400. Among women, it fell by 213,300, reaching 1,485,000.

The female unemployment rate decreased by 1.97 points and stood at 13.16%. The male unemployment rate decreased by 1.38 points and stood at 10.19%.

By age, we see a decline in unemployment this quarter in all groups, except those aged 16 to 19, where it is practically unchanged. The largest decrease (-328,500) occurred among people aged 25 to 54 years.

By nationality, unemployment decreased this quarter among Spaniards<sup>14</sup> by 284,500 and among foreign nationals by 80,800. The unemployment rate of the Spanish population is 10.64%, while that of the foreign population is 17.25%.

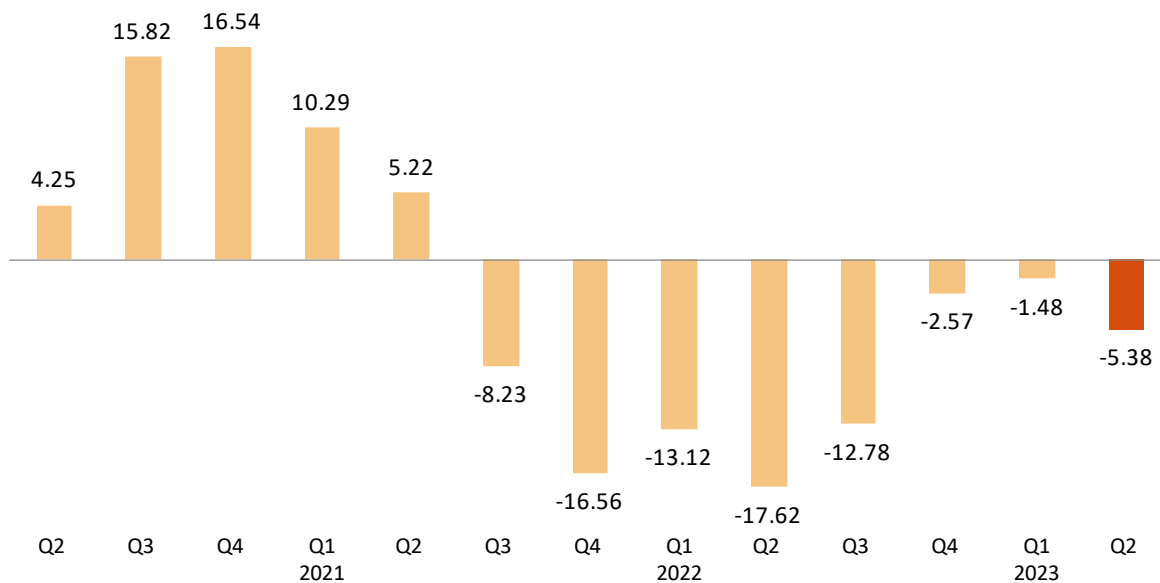
Unemployment fell this quarter in all sectors. *Services* (-208,600) and *Construction* (-23,400) saw the largest decreases.

Unemployment decreased by 86,200 persons among those who lost their job over a year ago and by 22,400 among those who are seeking their first job.

The evolution of unemployment in the annual variation is -5.38%. The total number of unemployed persons has decreased by 157,000 persons in one year, with a decrease of 77,900 for men and of 79,100 for women.

<sup>4</sup> This includes those with dual nationality

**Annual variation rate of unemployment. Percentage.**



By age, the number of unemployed persons fell in the last year in all groups, except those aged 20 to 24, where it rose by 20,900 persons. The largest decrease was in the 25-54 age group, with 147,800 fewer unemployed persons.

By sectors, unemployment fell last year in *Agriculture* (13,500 fewer unemployed) and in *Construction* (-6,200). It increased in *Services* (64,700) and in *Industry* (2,800). On the other hand, the number of unemployed persons who lost their jobs over a year ago decreased by 185,600 and that of unemployed persons looking for their first job by 19,200.

**Economically active population and activity rate**

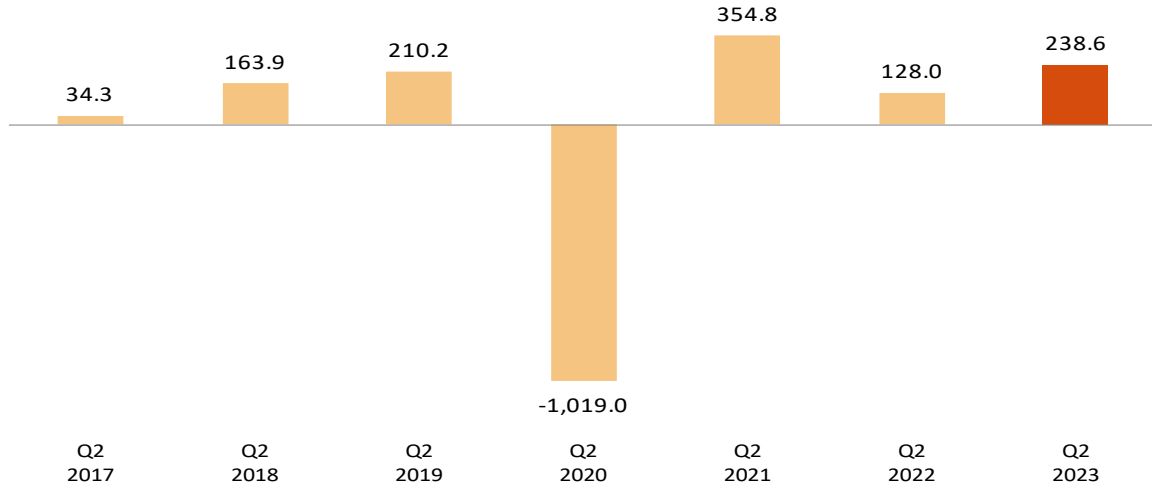
The economically active population increased by 238,600 persons in the second quarter, standing at 23,819,200. The number of economically active men increased by 180,200, and that of women by 58,500.

By nationality, the number of economically active persons increased in this quarter by 184,600 among Spaniards<sup>5</sup> and by 54,000 among foreign nationals.

The economic activity rate increased by 0.42, reaching 58.97%. The economic activity rate for males rose by 0.75, standing at 63.93%, and that of females increased by 0.11, to 54.29%.

<sup>5</sup> This includes those with dual nationality

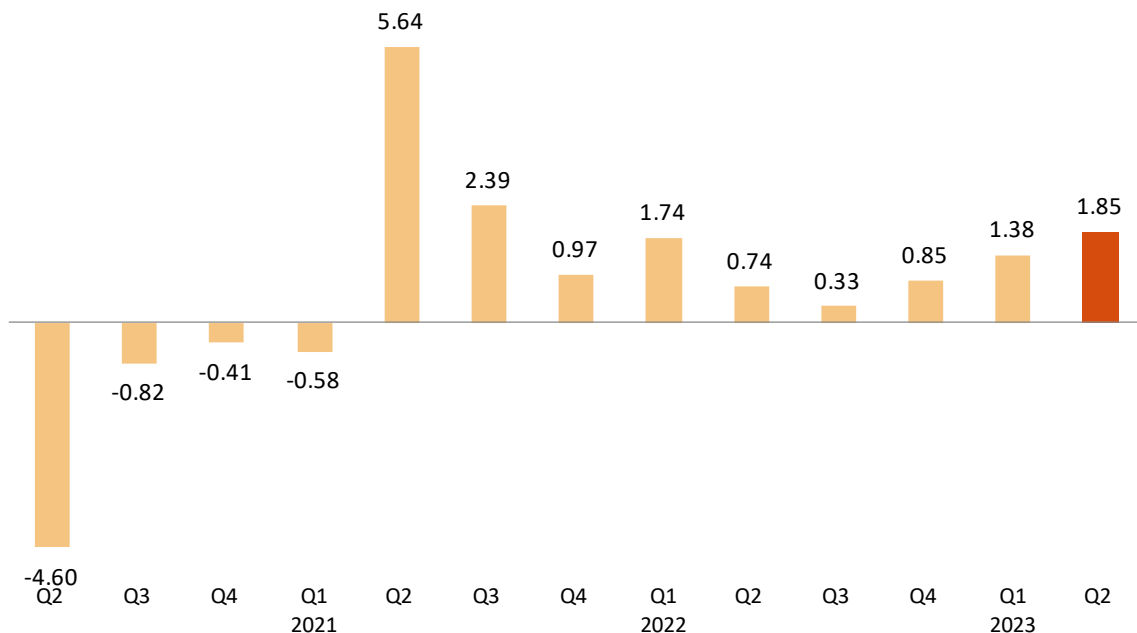
## Quarterly variation of activity. Thousands. (Q2 compared with Q1 of the same year)



The activity rate of Spaniards<sup>1</sup> rose by 0.24 as compared with the previous quarter, standing at 57.58%. Foreign national activity fell by 0.45 to 68.82%. The 11-point difference between the two activity rates is mainly explained by the different age structures for the two populations.

In annual terms, the economically active population has increased by 431,700 persons. The annual variation rate of economically active persons is 1.85%.

## Annual variation rate of activity. Percentage.



<sup>1</sup>Includes dual nationality.

## Households

The number of households increased by 74,500 this quarter, and stands at 19,355,400. Of these, 5,442,800 are single-person households.

Households in which all economically active members are unemployed decreased by 139,300 this quarter, to a total of 916,000. Of these, 290,700 are single-person households.

On the other hand, the number of households in which all of the economically active members are employed decreased by 345,700, standing at 11,557,700. Of these, 2,435,200 are single-person households.

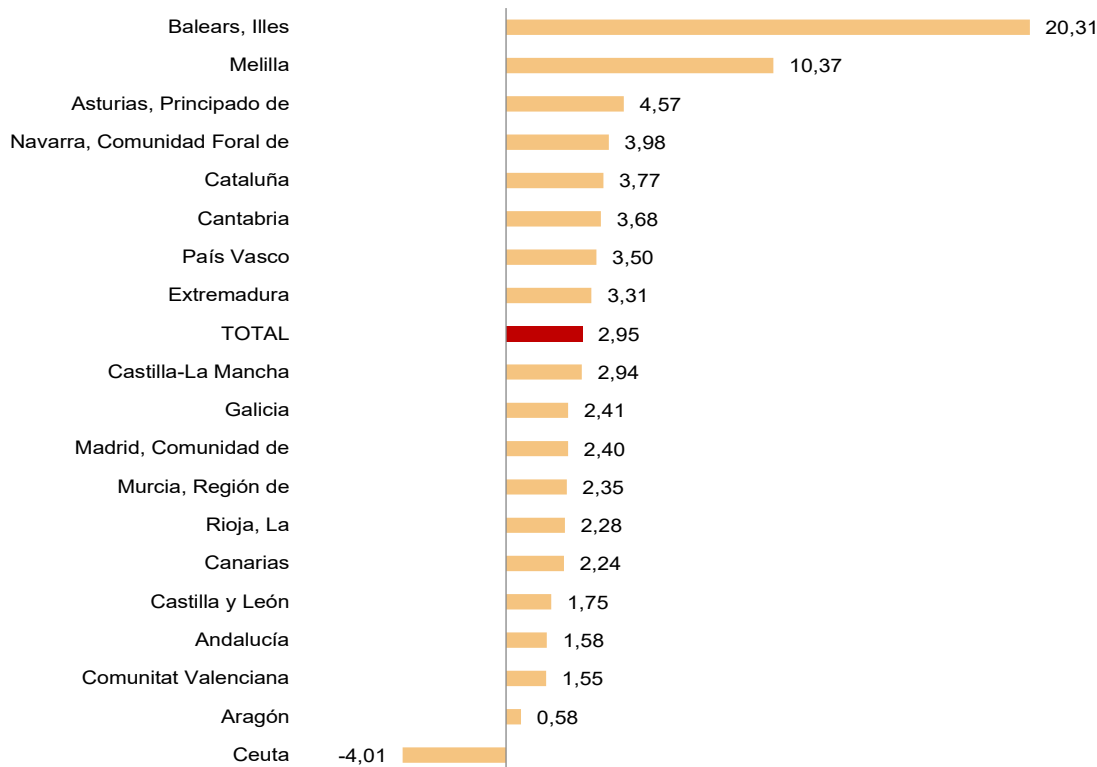
In an annual comparison, the number of households with at least one economically active member in which those members were unemployed decreased by 74,300, while those where all active members were employed increased by 310,600.

## Results by Autonomous Communities<sup>6</sup>

This quarter, employment grew in all the Autonomous Communities. The greatest increases were recorded in Cataluña (132,700 more employed persons), Illes Balears (108,100) and Comunidad de Madrid (77,300).

In relative terms, the Autonomous Communities with the highest quarterly employment increases were Illes Balears (20.31%), Principado de Asturias (4.57%) and Comunidad Foral de Navarra (3.98%).

### Quarterly variation rate of employment by autonomous community. Percentage



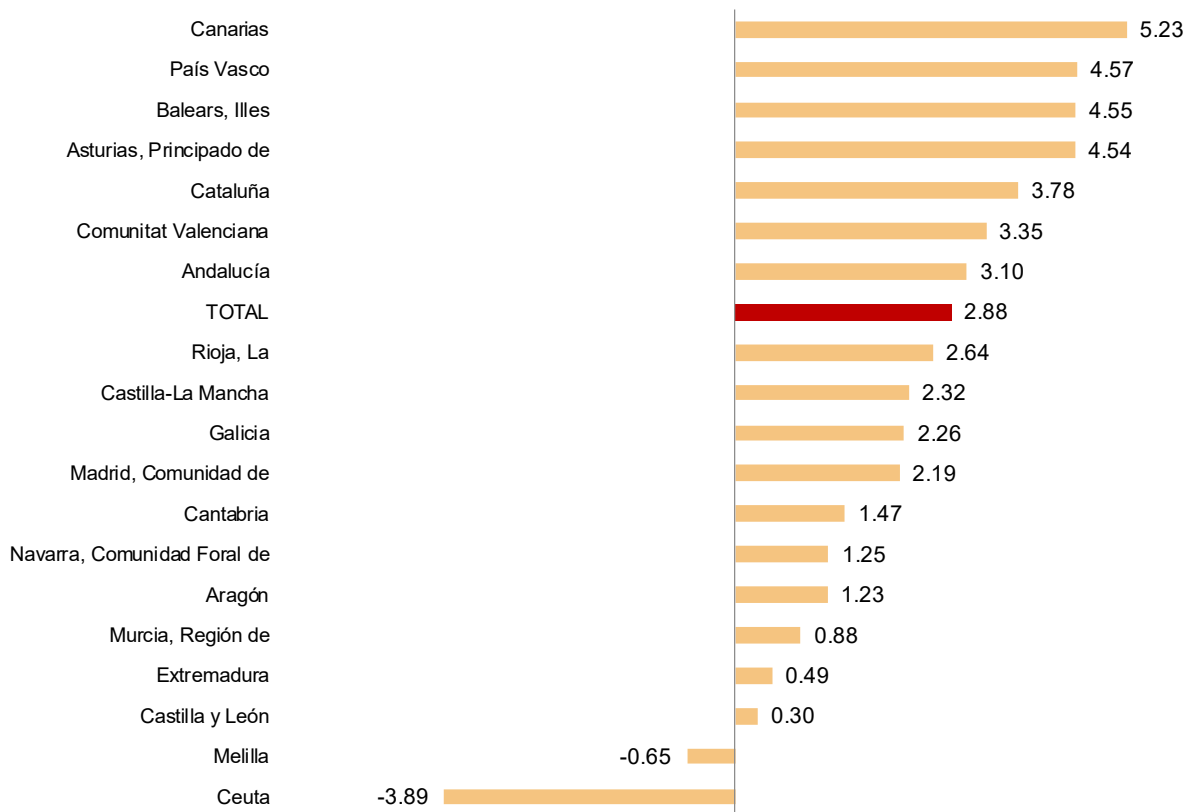
<sup>6</sup> As with the rest of the EAPS data, employment results in this section are presented according to the Autonomous Community where the persons interviewed in the survey reside, and not according to where their workplace is.



In the past year, employment increased in all communities. Cataluña (133,000 more), Andalucía (101,600) and Comunitat Valenciana (72,700) saw the biggest increases.

In relative terms, the Autonomous Communities with the greatest annual employment variations were Canarias (5.23%), País Vasco (4.57%) and Illes Balears (4.55%).

## Annual variation rate of employment by autonomous community. Percentage



Unemployment fell this quarter in all communities. Cataluña (- 70,400), Illes Balears (- 68,600) and Comunidad de Madrid (- 49,900) reported the largest falls.

In annual terms, there has also been a generalised decrease in unemployment. The greatest decreases took place in Canarias (25,200 fewer), Cataluña (-23,700) and Galicia (-19,700).

País Vasco (7.13%), Illes Balears (7.15%) and La Rioja (7.46%) recorded the lowest unemployment rates this quarter. At the other end of the scale, Andalucía (18.05%), Extremadura (17.05%) and Canarias (15.25%) showed the highest rates.

The greatest increases in economic activity this quarter were recorded in Cataluña (62,400 more economically active individuals), Andalucía (51,300) and Illes Balears (39,500). The greatest decrease was observed in Comunitat Valenciana (6,900 fewer).

In the last 12 months, Cataluña (109,300 more economically active persons), Andalucía (92,900) and Comunitat Valenciana (65,400) recorded the greatest increases in the number of economically active persons. In contrast, the greatest decrease was observed in Castilla y León (10,600 fewer).

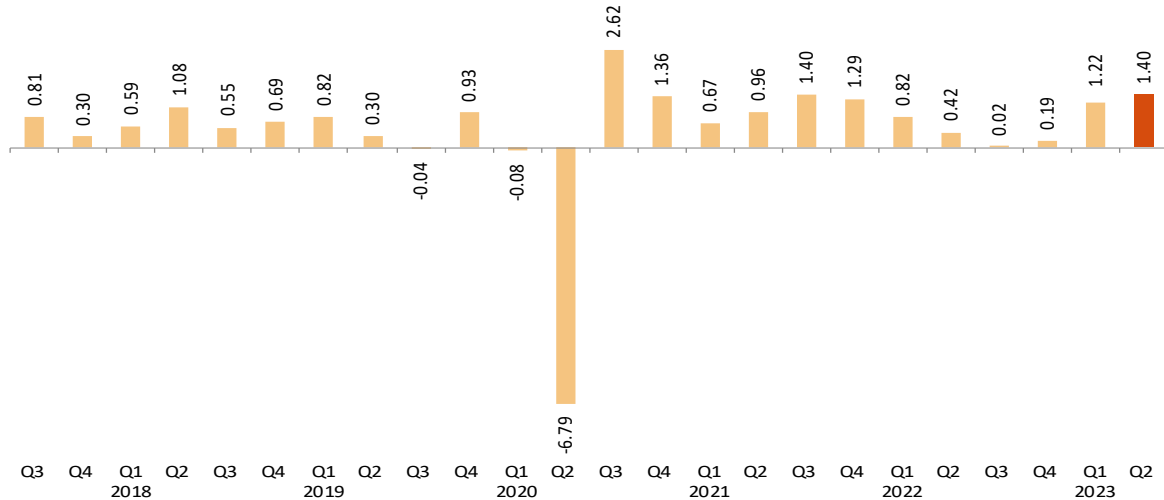
The activity rates this quarter fluctuated between 65.01% for Illes Balears and 50.40% for Principado de Asturias.



### Seasonally adjusted series

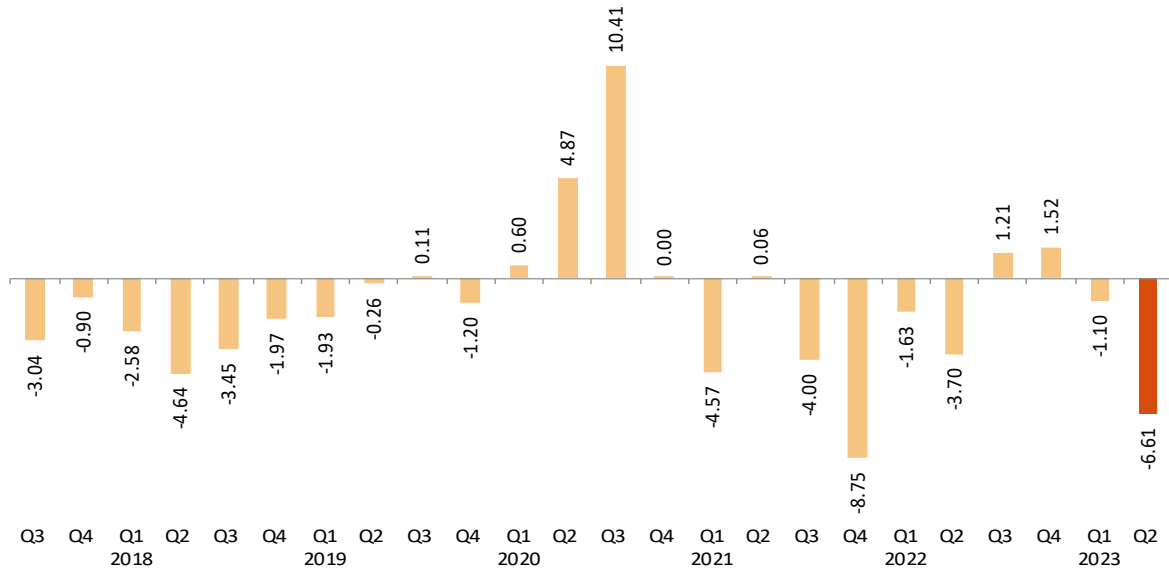
In the second quarter of 2023, the quarterly variation rate of employment adjusted for seasonal effects was 1.40%.

#### Quarterly variation rate of seasonally adjusted employment. Percentage



As regards seasonally-adjusted unemployment results, there was a decrease of 6.61%.

#### Quarterly variation rate of seasonally adjusted unemployment. Percentage



As explained in the methodology used for seasonal adjustment, the seasonal adjustment model is maintained for a year, with the first quarters corresponding to the time of the model's re-identification, but the coefficients are recalculated quarterly, so that each quarter the previous results are reviewed (either by re-identification or by revision of coefficients) and therefore the latest series available must always be consulted.

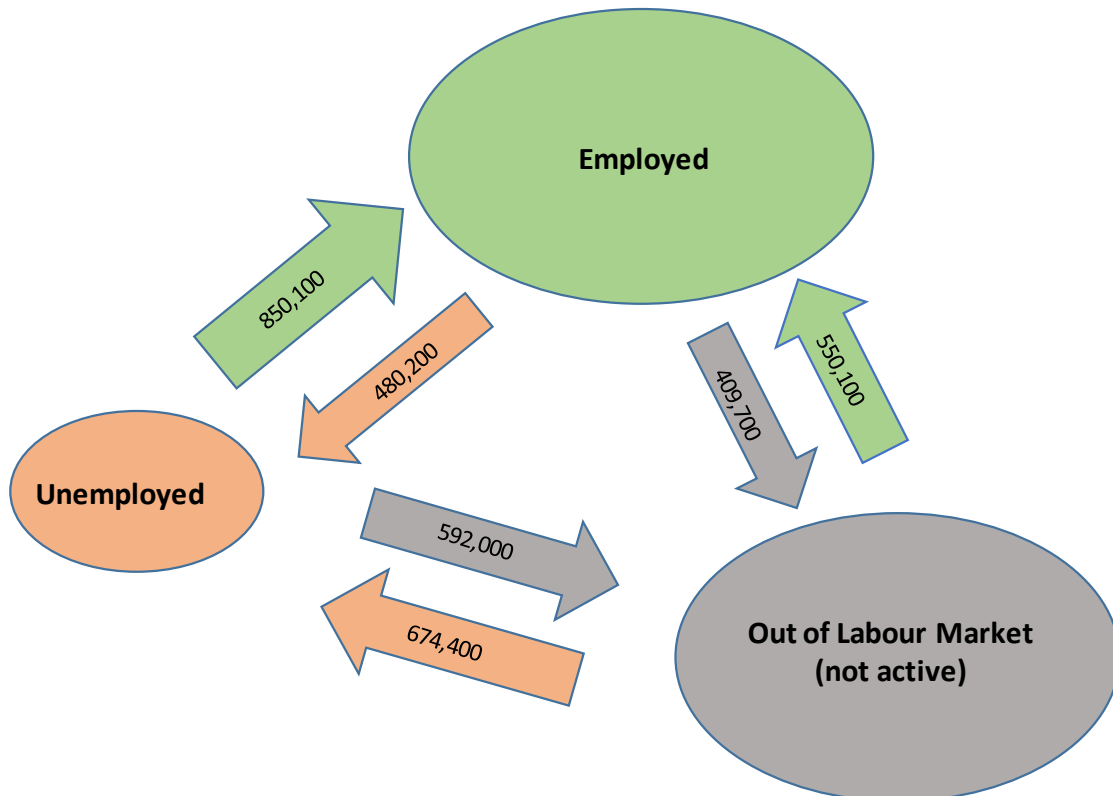
The series of the quarterly variation rates of the seasonally adjusted results of employment and unemployment since 2005 and the description of the method used can be found at:

[http://www.ine.es/daco/daco42/daco4211/epa\\_desestacional.xlsx](http://www.ine.es/daco/daco42/daco4211/epa_desestacional.xlsx)

**Flows in absolute values with respect to the previous quarter<sup>7</sup>**

This quarter has seen an increase in flows towards employment, both from those who were unemployed and those who were economically inactive in the previous quarter. A fall in flows towards inactivity from employment and unemployment is also observed.

**Flow of persons by labour status from Q1-2023 to Q2-2023.**

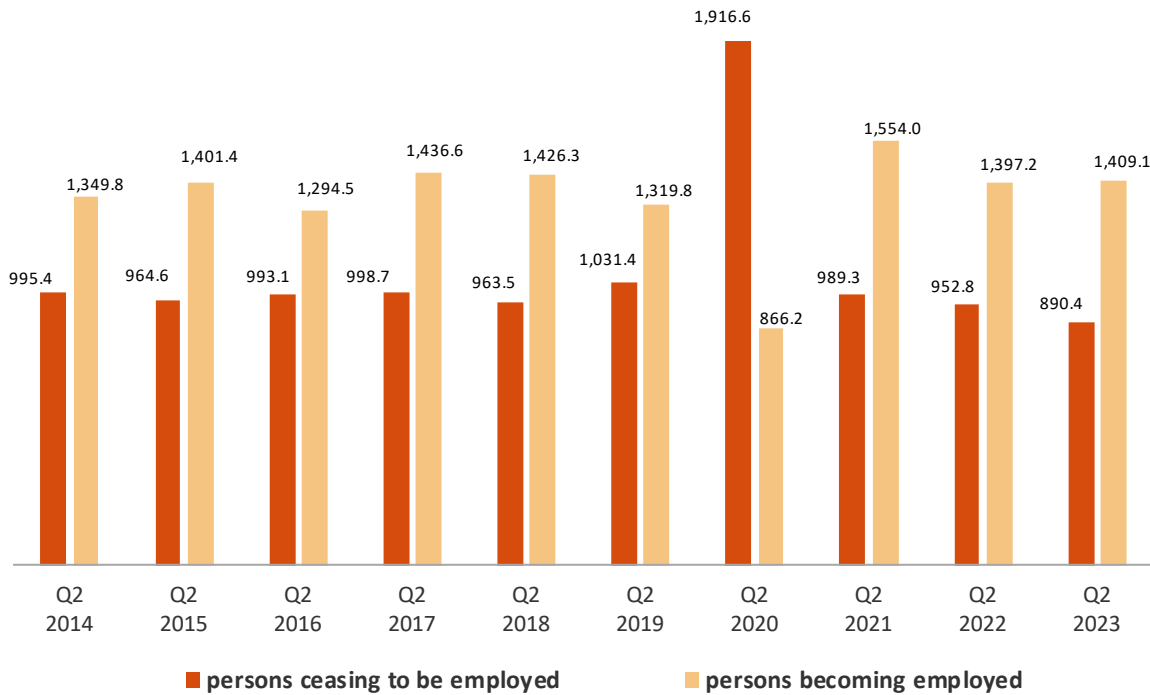


The total inflow to employment in the second quarter of 2023 was 1,409,100 people, a figure 11,900 higher than that recorded in the same quarter of the previous year.

However, the outflow from employment was 890,400 people, which is 62,400 fewer than in the same quarter of 2022.

<sup>7</sup> This section compiles the results of the Economically Active Population Flow Statistics. Due to the methodology used in its preparation, the results might not necessarily match the net balances of quarterly EAPS. The differences are caused by the “no data recorded” groups (persons turning 16 years old in the change between one quarter and the next and those who were not living in Spain in the previous quarter).

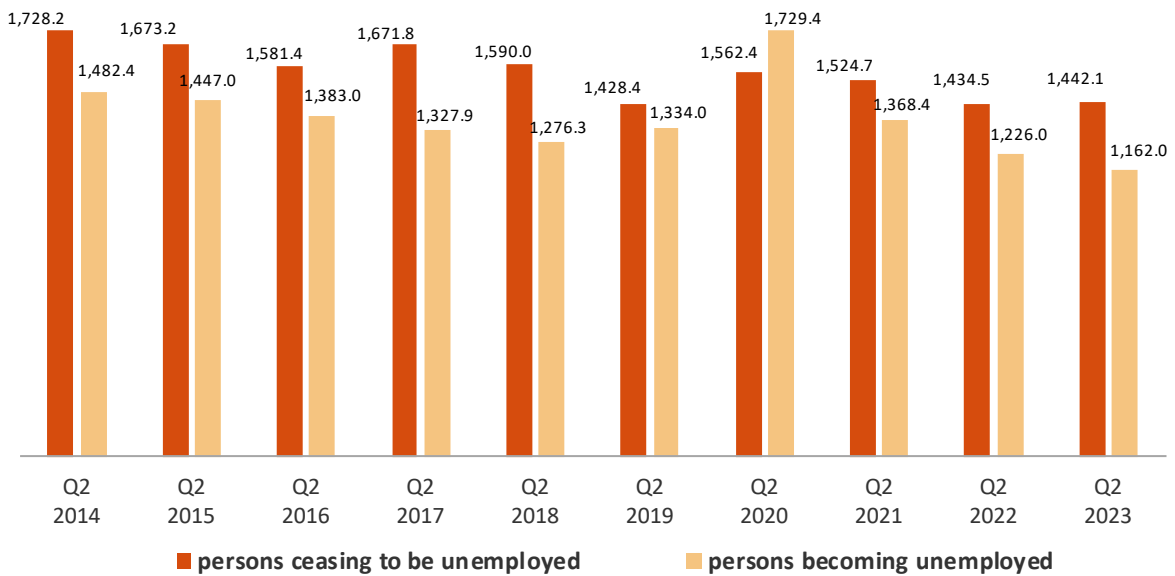
**Flows of persons becoming and ceasing to be employed each quarter. Thousands.**



The number of persons who were unemployed three months ago but are not currently unemployed stands at 1,442,100, which is 7,600 more people than in the same period in 2022.

However, the total inflow to unemployment came to 1,162,000 people, which is 64,000 fewer people than in the same quarter in 2022.

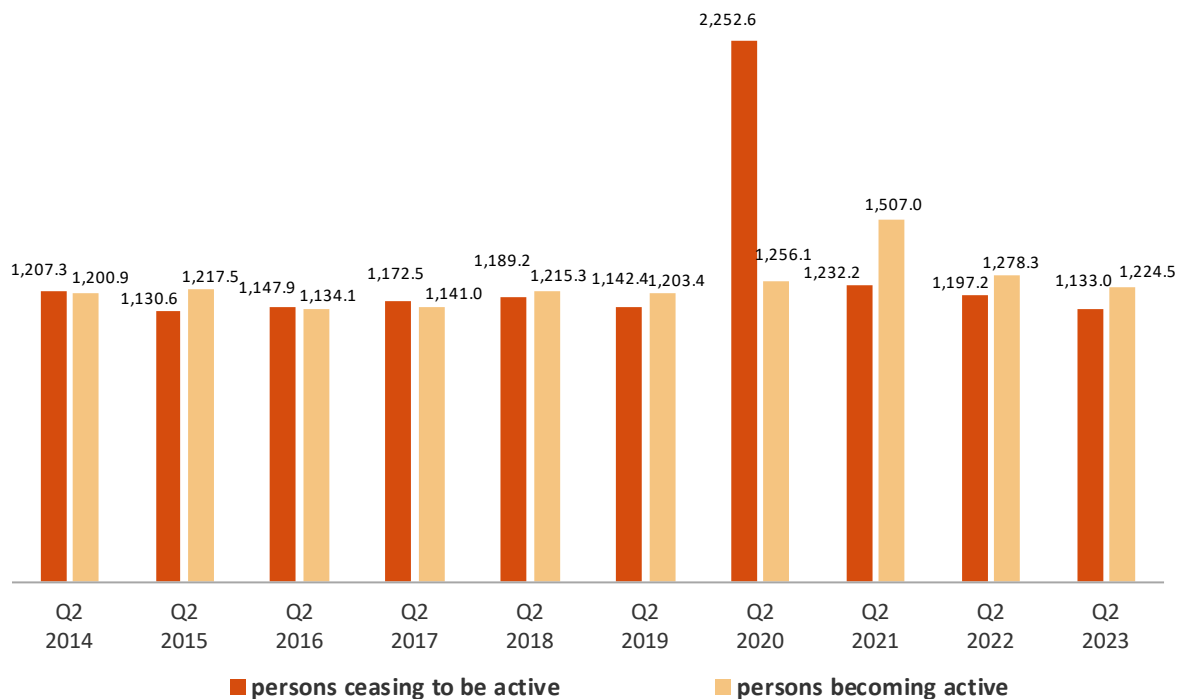
**Flows of persons becoming and ceasing to be unemployed each quarter Thousands**



The inflow to activity in this first quarter was 1,224,500, a figure 53,800 lower than that of the same period in 2022.

Meanwhile, a total of 1,133,000 people have become inactive this quarter, compared to 1,197,200 who did so during the same quarter in the previous year (that is, 64,200 fewer).

**Flows of persons becoming and ceasing to be active each quarter** Thousands



The outflow from employment to inactivity of people aged 60 and over was 80,400 this quarter. This figure is 12,100 persons lower than the one observed in the same period of 2022.

The number of people under 25 who have entered employment directly from inactivity this quarter stands at 193,900, a figure 3,900 higher than for the same quarter in 2022.

The flow data on which these comments are based can be found in the annex to this press release <http://www.ine.es/daco/daco42/daco4211/epafuj0223.xlsx>

**EAPS results by province**

The provincial results summary of the EAPS may be accessed via the following link:

<http://www.ine.es/daco/daco42/daco4211/epapro0223.pdf>

All the provincial information can also be accessed from the INEbase database:

<http://www.ine.es/dynt3/inebase/index.html?padre=996>

**Data Review and Update**

The data published today are final. All results are available on INEBase

## Methodological note

The Labour Force Survey (EAPS) has been carried out since 1964. The methodology currently used was put in place in 2021, and adapts the previous methodology (begun in 2005) to the new regulations of the European Labour Force Survey.

It is a continuous, quarterly research activity addressed to families, whose main purpose is to obtain data on the labour force and its various categories (employed, unemployed), as well as on the population outside the labour market (inactive).

As of the third quarter of 2009, the survey includes an additional sample in Galicia that is collected by the Galician Statistics Institute (IGE) using the same fieldwork system and methodology as the INE.

**Type of survey:** quarterly continuous survey.

**Population scope:** population residing in family homes.

**Geographical scope:** the entire national territory.

**Reference period of the results:** the quarter.

**Reference period of the information:** the week before the interview.

**Sample size:** In 2021, the number of census tracts was 3822, of which 234 were the additional sample from Galicia. With the change in the arrangement of sections, this number of sections has increased gradually and will reach a total of 5,298 in 2024, of which 288 will be the additional sample from Galicia.

The number of homes selected per section will go from an average of 20 to 14. Currently there are around 55,000 dwellings and 130,000 people.

**Sampling type:** two-stage sampling with stratification in the first stage units. The first stage units are the census tracts and the second stage units are the inhabited family dwellings.

**Collection method:** personal, telephone and web interviews.

For more information, the methodology and technical details of the survey design and data quality assessment can be accessed at:

[https://www.ine.es/dynqs/INEbase/es/operacion.htm?c=Estadistica\\_C&cid=1254736176918&menu=metodologia&idp=1254735976595](https://www.ine.es/dynqs/INEbase/es/operacion.htm?c=Estadistica_C&cid=1254736176918&menu=metodologia&idp=1254735976595)

The standardized methodological report is at:

<https://www.ine.es/dynt3/metadatos/es/RespuestaDatos.html?oe=30308>

INE statistics are produced in accordance with the Code of Good Practice for European Statistics, which is the basis for the institution's quality policy and strategy. For more information, see the section on [Quality in the INE and Code of Good Practices](#) on the INE website

The Statistics on Economically Active Population Flows (EAPFS) collect information regarding the follow-up of the population, or specific groups thereof, between one quarter and the previous one in absolute values, regarding their relation with labour market. This information links the interviewee's situations in two moments of time on the basis of the EAPS in order to study their evolution.

Given that in the EAPS sample one sixth is renewed each quarter and the remaining 5/6 are kept fixed between two consecutive quarters, the common part of the sample between the two iterations of the survey is used to obtain flow statistics from the questions relating to the interviewee's situation in the current and previous quarters.

**Type of survey:** quarterly exploitation of the common EAPS sample between consecutive quarters that provides estimates in absolute values of the relation with the activity in the current period compared with that of the previous quarter.

**Population scope:** population residing in family homes.

**Geographical scope:** the entire national territory.

**Reference period of the results:** the quarter.

**Reference period of the information:** the week before the interview.

**Sample size:** In 2021, the number of census tracts was 3822, of which 234 were the additional sample from Galicia. With the change in the arrangement of sections, this number of sections has increased gradually and will reach a total of 5,298 in 2024, of which 288 will be the additional sample from Galicia.

The number of homes selected per section will go from an average of 20 to 14. Currently there are around 55,000 dwellings and 130,000 people.

**Sampling type:** two-stage sampling with stratification in the first stage units. The first stage units are the census tracts and the second stage units are the inhabited family dwellings.

**Collection method:** personal and telephone interview.

For more information, the methodology can be accessed at:

[https://www.ine.es/inebaseDYN/flujo30310/docs/metoflujos\\_valores\\_absolutos.pdf](https://www.ine.es/inebaseDYN/flujo30310/docs/metoflujos_valores_absolutos.pdf)

The standardized methodological report is at:

<https://www.ine.es/dynt3/metadatos/es/RespuestaDatos.html?oe=30310>

---

For further information see **INEbase:** [www.ine.es/en/](http://www.ine.es/en/) Twitter: [@es\\_ine](https://twitter.com/es_ine)

All press releases at: [www.ine.es/en/prensa/prensa\\_en.htm](http://www.ine.es/en/prensa/prensa_en.htm)

**Press office:** Telephone numbers: (+34) 91 583 93 63 /94 08 – [gprensa@ine.es](mailto:gprensa@ine.es)

**Information Area:** Telephone number: (+34) 91 583 91 00 – [www.ine.es/infoine/?L=1](http://www.ine.es/infoine/?L=1)

---



## Economically Active Population Survey Second Quarter 2023

### National results

(Absolute figures in thousands and rates in percentage)

	Current quarter	Variation on previous quarter		Variation on same quarter, previous year	
		Difference	Percentage	Difference	Percentage
<b>1. Population aged 16 years and over by sex and labour status</b>					
<b>BOTH SEXES</b>					
<b>Population aged 16 years and over</b>	40,392.6	118.6	0.29	559.5	1.40
Active population	23,819.2	238.6	1.01	431.7	1.85
- Employed persons	21,056.7	603.9	2.95	588.7	2.88
- Unemployed persons	2,762.5	-365.3	-11.68	-157.0	-5.38
Inactive population	16,573.5	-120.0	-0.72	127.8	0.78
Activity rate	58.97	0.42	-	0.26	-
Unemployment rate	11.60	-1.67	-	-0.89	-
<b>Population aged 16 to 64 years</b>	30,947.4	63.0	0.20	356.9	1.17
Activity rate (16-64)	75.84	0.59	-	0.42	-
Unemployment rate (16-64)	11.66	-1.70	-	-0.91	-
Employment rate (16-64)	66.99	1.80	-	1.06	-
<b>MALES</b>					
<b>Population aged 16 years and over</b>	19,606.8	51.6	0.26	256.6	1.33
Active population	12,534.5	180.2	1.46	202.6	1.64
- Employed persons	11,257.1	332.2	3.04	280.5	2.56
- Unemployed persons	1,277.4	-152.0	-10.63	-77.9	-5.75
Inactive population	7,072.2	-128.6	-1.79	54.0	0.77
Activity rate	63.93	0.75	-	0.20	-
Unemployment rate	10.19	-1.38	-	-0.80	-
<b>Population aged 16 to 64 years</b>	15,438.8	25.0	0.16	161.1	1.05
Activity rate (16-64)	79.94	1.02	-	0.37	-
Unemployment rate (16-64)	10.27	-1.39	-	-0.78	-
Employment rate (16-64)	71.73	2.02	-	0.96	-
<b>FEMALES</b>					
<b>Population aged 16 years and over</b>	20,785.9	67.0	0.32	302.9	1.48
Active population	11,284.6	58.5	0.52	229.1	2.07
- Employed persons	9,799.6	271.8	2.85	308.2	3.25
- Unemployed persons	1,485.0	-213.3	-12.56	-79.1	-5.05
Inactive population	9,501.3	8.6	0.09	73.8	0.78
Activity rate	54.29	0.11	-	0.32	-
Unemployment rate	13.16	-1.97	-	-0.99	-
<b>Population aged 16 to 64 years</b>	15,508.6	37.9	0.25	195.8	1.28
Activity rate (16-64)	71.76	0.16	-	0.49	-
Unemployment rate (16-64)	13.21	-2.01	-	-1.05	-
Employment rate (16-64)	62.28	1.58	-	1.17	-

### 2. Spanish population<sup>(1)</sup> aged 16 years and over by labour status

<b>SPANISH POPULATION AGED 16 YEARS AND OVER</b>	35,387.8	8.3	0.02	119.0	0.34
Active population	20,375.0	184.6	0.91	178.7	0.88
- Employed persons	18,206.6	469.2	2.65	325.9	1.82
- Unemployed persons	2,168.4	-284.5	-11.60	-147.2	-6.36
Inactive population	15,012.8	-176.4	-1.16	-59.7	-0.40
Activity rate	57.58	0.51	-	0.31	-
Unemployment rate	10.64	-1.51	-	-0.82	-

<sup>(1)</sup> including dual nationality

## National results

(Absolute figures in thousands and rates in percentage)

	Current quarter	Variation on previous quarter		Variation on same quarter, previous year		
		Difference	Percentage	Difference	Percentage	
<b>3. Foreign population aged 16 years and over by labour status</b>						
FOREIGN POPULATION AGED 16 YEARS AND OVER	5,004.8	110.4	2.26	440.6	9.65	
Active population	3,444.2	54.0	1.59	253.0	7.93	
- Employed persons	2,850.1	134.8	4.96	262.8	10.16	
- Unemployed persons	594.0	-80.8	-11.97	-9.7	-1.61	
Inactive population	1,560.6	56.4	3.75	187.6	13.66	
Activity rate	68.82	-0.45	-	-1.10	-	
Unemployment rate	17.25	-2.66	-	-1.67	-	
<b>4. Employed persons by sex, age group and economic sector</b>						
BOTH SEXES	21,056.7	603.9	2.95	588.7	2.88	
16 to 19 years	162.2	24.9	18.10	10.4	6.85	
20 to 24 years	1,043.5	75.4	7.79	21.2	2.08	
25 to 29 years	1,864.2	98.8	5.59	66.3	3.69	
30 to 34 years	2,195.1	93.0	4.42	103.6	4.96	
35 to 39 years	2,402.3	52.7	2.24	30.9	1.30	
40 to 44 years	2,930.0	-0.4	-0.01	-57.9	-1.94	
45 to 49 years	3,237.3	81.7	2.59	77.4	2.45	
50 to 54 years	2,903.7	84.8	3.01	117.2	4.21	
55 and over	4,318.4	93.0	2.20	219.6	5.36	
MALES	11,257.1	332.2	3.04	280.5	2.56	
16 to 19 years	90.7	16.5	22.27	8.6	10.42	
20 to 24 years	573.3	44.3	8.38	17.4	3.13	
25 to 29 years	965.5	44.6	4.84	20.8	2.20	
30 to 34 years	1,158.4	46.3	4.16	72.8	6.71	
35 to 39 years	1,260.5	28.6	2.32	16.4	1.32	
40 to 44 years	1,550.6	10.1	0.66	-46.1	-2.88	
45 to 49 years	1,738.0	43.1	2.54	21.0	1.22	
50 to 54 years	1,562.2	34.2	2.24	47.8	3.16	
55 and over	2,358.1	64.5	2.81	121.7	5.44	
FEMALES	9,799.6	271.8	2.85	308.2	3.25	
16 to 19 years	71.5	8.3	13.20	1.8	2.65	
20 to 24 years	470.3	31.1	7.08	3.8	0.82	
25 to 29 years	898.8	54.2	6.42	45.5	5.33	
30 to 34 years	1,036.7	46.7	4.72	30.8	3.06	
35 to 39 years	1,141.8	24.1	2.16	14.5	1.28	
40 to 44 years	1,379.4	-10.5	-0.76	-11.9	-0.85	
45 to 49 years	1,499.3	38.6	2.64	56.4	3.91	
50 to 54 years	1,341.5	50.6	3.92	69.4	5.46	
55 and over	1,960.3	28.6	1.48	97.8	5.25	
TOTAL EMPLOYED PERSONS	21,056.7	603.9	2.95	588.7	2.88	
Agriculture	749.7	1.5	0.20	-39.6	-5.02	
Industry	2,726.1	-64.5	-2.31	-50.5	-1.82	
Construction	1,359.0	60.9	4.69	20.8	1.55	
Services	16,221.9	606.0	3.88	658.0	4.23	

## National results

(Absolute figures in thousands)

	Current quarter	Variation on previous quarter		Variation on same quarter, previous year	
		Difference	Percentage	Difference	Percentage

### 5. Employed persons by professional status, type of contract, public / private sectors and working hours

TOTAL EMPLOYED PERSONS	21,056.7	603.9	2.95	588.7	2.88
BY PROFESSIONAL STATUS					
Self-employed persons	3,196.3	97.3	3.14	44.0	1.39
- Employers	1,016.1	34.5	3.51	11.4	1.13
- Independent workers	2,099.8	66.8	3.28	57.6	2.82
- Cooperative members	22.4	-2.4	-9.81	-5.3	-19.29
- Family workers	58.1	-1.4	-2.43	-19.7	-25.34
Employees	17,853.7	505.5	2.91	549.8	3.18
- With a permanent job	14,760.7	410.1	2.86	1,314.1	9.77
- With a temporary job	3,093.0	95.4	3.18	-764.3	-19.81
Others	6.7	1.1	20.51	-5.1	-42.96
BY PUBLIC / PRIVATE SECTORS					
Public sector employed persons	3,517.7	-6.2	-0.17	63.9	1.85
Private sector employed persons	17,539.0	610.1	3.60	524.8	3.08
BY WORKING HOURS					
Full-time employed persons	18,208.9	561.5	3.18	559.2	3.17
Males	10,486.8	276.7	2.71	256.8	2.51
Females	7,722.2	284.8	3.83	302.3	4.07
Part-time employed persons	2,847.8	42.5	1.51	29.5	1.05
Males	770.4	55.5	7.76	23.7	3.17
Females	2,077.4	-13.0	-0.62	5.8	0.28

(\*) Private employment includes all persons in employment other than public employees. Namely: private employees, employers, independent workers, cooperative members, family workers and other professional status.

### 6. Unemployed persons by sex, age group, and economic sector

BOTH SEXES	2,762.5	-365.3	-11.68	-157.0	-5.38
16 to 19 years	122.1	0.7	0.60	-21.9	-15.20
20 to 24 years	345.5	-7.7	-2.17	20.9	6.45
25 to 54 years	1,759.8	-328.5	-15.73	-147.8	-7.75
55 and over	535.1	-29.8	-5.28	-8.2	-1.51
MALES	1,277.4	-152.0	-10.63	-77.9	-5.75
16 to 19 years	68.8	1.4	2.09	-11.2	-14.04
20 to 24 years	183.5	4.6	2.58	18.6	11.25
25 to 54 years	783.8	-134.5	-14.64	-65.9	-7.75
55 and over	241.3	-23.5	-8.89	-19.3	-7.42
FEMALES	1,485.0	-213.3	-12.56	-79.1	-5.05
16 to 19 years	53.2	-0.7	-1.26	-10.6	-16.64
20 to 24 years	162.0	-12.3	-7.05	2.4	1.49
25 to 54 years	976.0	-194.1	-16.58	-81.9	-7.74
55 and over	293.8	-6.3	-2.09	11.1	3.94
TOTAL UNEMPLOYED PERSONS	2,762.5	-365.3	-11.68	-157.0	-5.38
Agriculture	131.3	-5.7	-4.17	-13.5	-9.33
Industry	141.0	-19.1	-11.92	2.8	2.05
Construction	110.0	-23.4	-17.54	-6.2	-5.33
Services	1,048.0	-208.6	-16.60	64.7	6.58
Lost their job more than 1 year ago	1,039.7	-86.2	-7.65	-185.6	-15.14
First job seekers	292.5	-22.4	-7.11	-19.2	-6.16

## National results

(Absolute figures in thousands and rates in percentage)

	Current quarter	Variation on previous quarter		Variation on same quarter, previous year	
		Difference	Percentage	Difference	Percentage

### 7. Unemployment rate by relationship with the reference person

	Current quarter	Variation on previous quarter	Percentage	Variation on same quarter, previous year	Percentage
TOTAL	11.60	-1.67	-	-0.89	-
Reference person	9.86	-1.66	-	-1.07	-
Spouse or partner	8.83	-1.43	-	-0.99	-
Child	21.11	-2.43	-	-0.57	-
Other relatives	18.48	-0.79	-	1.78	-
Unrelated persons	9.59	-5.02	-	-1.39	-

### 8. Household data

	Current quarter	Variation on previous quarter	Percentage	Variation on same quarter, previous year	Percentage
TOTAL HOUSEHOLDS	19,355.4	74.5	0.39	275.2	1.44
Households with at least one active member	13,961.7	79.2	0.57	196.6	1.43
- All members employed	11,557.7	345.7	3.08	310.6	2.76
- All members unemployed	916.0	-139.3	-13.20	-74.3	-7.50
Households without any active population	5,393.7	-4.7	-0.09	78.6	1.48

## Mobility according to activity in current and previous quarter

Classification in previous quarter	Classification in current quarter			
	Total	Employed	Unemployed persons	Inactive
<b>BOTH SEXES</b>				
Total	40,392.7	21,056.7	2,762.5	16,573.5
Employed persons	20,538.1	19,647.6	480.7	409.7
Unemployed persons	3,042.5	850.1	1,600.4	592.0
Inactive	16,664.9	550.1	674.4	15,440.5
Not classifiable	147.1	8.9	6.9	131.3
<b>MALES</b>				
Total	19,614.4	11,277.7	1,265.0	7,071.8
Employed persons	10,987.4	10,570.0	237.9	179.5
Unemployed persons	1,396.5	445.2	724.0	227.3
Inactive	7,161.7	258.7	299.5	6,603.5
Not classifiable	68.9	3.7	3.8	61.4
<b>FEMALES</b>				
Total	20,778.2	9,779.1	1,497.4	9,501.7
Employed persons	9,550.7	9,077.7	242.9	230.2
Unemployed persons	1,646.0	404.9	876.5	364.7
Inactive	9,503.3	291.4	374.9	8,837.0
Not classifiable	78.3	5.2	3.2	69.9

Weighting factors of current quarter (backward analysis)

## Results by autonomous community and autonomous city

(Absolute figures in thousands)

	Current quarter	Variation on previous quarter		Variation on same quarter, previous year	
		Difference	Percentage	Difference	Percentage
<b>1. Population aged 16 years and over</b>					
TOTAL	40,392.6	118.6	0.29	559.5	1.40
Andalucía	7,172.3	17.1	0.24	73.9	1.04
Aragón	1,108.1	0.3	0.02	12.9	1.18
Asturias, Principado de	884.8	1.1	0.12	2.7	0.30
Balears, Illes	1,060.7	8.6	0.81	28.7	2.78
Canarias	1,985.8	12.9	0.65	34.8	1.79
Cantabria	502.8	1.0	0.19	1.9	0.38
Castilla y León	2,034.8	-1.7	-0.08	5.5	0.27
Castilla-La Mancha	1,719.7	0.1	0.01	12.3	0.72
Cataluña	6,491.2	13.8	0.21	127.2	2.00
Comunitat Valenciana	4,366.3	23.0	0.53	92.4	2.16
Extremadura	890.5	0.4	0.04	-2.7	-0.30
Galicia	2,348.8	2.3	0.10	7.2	0.31
Madrid, Comunidad de	5,755.7	30.7	0.54	116.3	2.06
Murcia, Región de	1,274.1	7.4	0.58	21.9	1.75
Navarra, Comunidad Foral de	551.8	0.4	0.07	5.7	1.04
País Vasco	1,848.5	1.0	0.05	12.7	0.69
Rioja, La	267.7	0.1	0.04	3.7	1.40
Ceuta	65.4	0.3	0.44	0.5	0.79
Melilla	63.7	0.1	0.20	2.1	3.40

## 2. Active population

TOTAL	23,819.2	238.6	1.01	431.7	1.85
Andalucía	4,124.7	51.3	1.26	92.9	2.30
Aragón	650.5	1.3	0.20	5.4	0.83
Asturias, Principado de	446.0	6.7	1.52	15.0	3.48
Balears, Illes	689.6	39.5	6.08	14.5	2.15
Canarias	1,178.9	-0.8	-0.07	24.5	2.12
Cantabria	278.4	6.4	2.36	3.9	1.42
Castilla y León	1,111.0	4.3	0.39	-10.6	-0.95
Castilla-La Mancha	1,023.7	5.7	0.56	10.5	1.04
Cataluña	3,990.8	62.4	1.59	109.3	2.82
Comunitat Valenciana	2,551.9	-6.9	-0.27	65.4	2.63
Extremadura	502.2	1.1	0.22	4.4	0.88
Galicia	1,249.9	11.2	0.90	5.3	0.42
Madrid, Comunidad de	3,650.8	27.4	0.76	53.5	1.49
Murcia, Región de	758.5	7.7	1.03	8.1	1.08
Navarra, Comunidad Foral de	324.7	0.6	0.18	4.1	1.29
País Vasco	1,052.7	21.0	2.03	28.1	2.74
Rioja, La	158.5	-1.0	-0.60	-0.6	-0.39
Ceuta	40.1	0.2	0.48	0.9	2.22
Melilla	36.1	0.5	1.27	-2.8	-7.11

\* Data below 5000 are subject to strong variations, due to sampling error

## Results by autonomous community and autonomous city

(Absolute figures in thousands)

	Current quarter	Variation on previous quarter		Variation on same quarter, previous year	
		Difference	Percentage	Difference	Percentage
<b>3. Employed persons</b>					
TOTAL	21,056.7	603.9	2.95	588.7	2.88
Andalucía	3,380.1	52.6	1.58	101.6	3.10
Aragón	594.6	3.4	0.58	7.2	1.23
Asturias, Principado de	399.4	17.4	4.57	17.3	4.54
Balears, Illes	640.3	108.1	20.31	27.9	4.55
Canarias	999.1	21.9	2.24	49.7	5.23
Cantabria	255.8	9.1	3.68	3.7	1.47
Castilla y León	1,010.4	17.4	1.75	3.0	0.30
Castilla-La Mancha	890.5	25.4	2.94	20.2	2.32
Cataluña	3,654.0	132.7	3.77	133.0	3.78
Comunitat Valenciana	2,240.6	34.2	1.55	72.7	3.35
Extremadura	416.6	13.4	3.31	2.0	0.49
Galicia	1,130.2	26.5	2.41	25.0	2.26
Madrid, Comunidad de	3,301.6	77.3	2.40	70.7	2.19
Murcia, Región de	664.9	15.3	2.35	5.8	0.88
Navarra, Comunidad Foral de	296.2	11.3	3.98	3.7	1.25
País Vasco	977.6	33.0	3.50	42.7	4.57
Rioja, La	146.7	3.3	2.28	3.8	2.64
Ceuta	29.1	-1.2	-4.01	-1.2	-3.89
Melilla	29.1	2.7	10.37	-0.2	-0.65

## 4. Unemployed persons

TOTAL	2,762.5	-365.3	-11.68	-157.0	-5.38
Andalucía	744.6	-1.3	-0.17	-8.7	-1.15
Aragón	55.9	-2.1	-3.68	-1.9	-3.26
Asturias, Principado de	46.6	-10.8	-18.75	-2.4	-4.81
Balears, Illes	49.3	-68.6	-58.16	-13.4	-21.33
Canarias	179.8	-22.7	-11.21	-25.2	-12.29
Cantabria	22.6	-2.7	-10.52	0.2	0.80
Castilla y León	100.7	-13.1	-11.52	-13.7	-11.95
Castilla-La Mancha	133.2	-19.7	-12.86	-9.7	-6.79
Cataluña	336.8	-70.4	-17.28	-23.7	-6.57
Comunitat Valenciana	311.3	-41.1	-11.67	-7.3	-2.28
Extremadura	85.6	-12.2	-12.51	2.3	2.82
Galicia	119.7	-15.3	-11.36	-19.7	-14.15
Madrid, Comunidad de	349.2	-49.9	-12.51	-17.1	-4.68
Murcia, Región de	93.7	-7.5	-7.43	2.3	2.48
Navarra, Comunidad Foral de	28.5	-10.8	-27.39	0.5	1.67
País Vasco	75.0	-12.0	-13.83	-14.6	-16.31
Rioja, La	11.8	-4.2	-26.34	-4.4	(:)
Ceuta	11.0	1.4	14.72	2.0	(:)
Melilla	7.0	-2.3	-24.54	-2.6	(:)

\* Data below 5,000 are subject to strong variations, due to sampling error

## Results by autonomous community and autonomous city

(Absolute figures in thousands and rates in percentage)

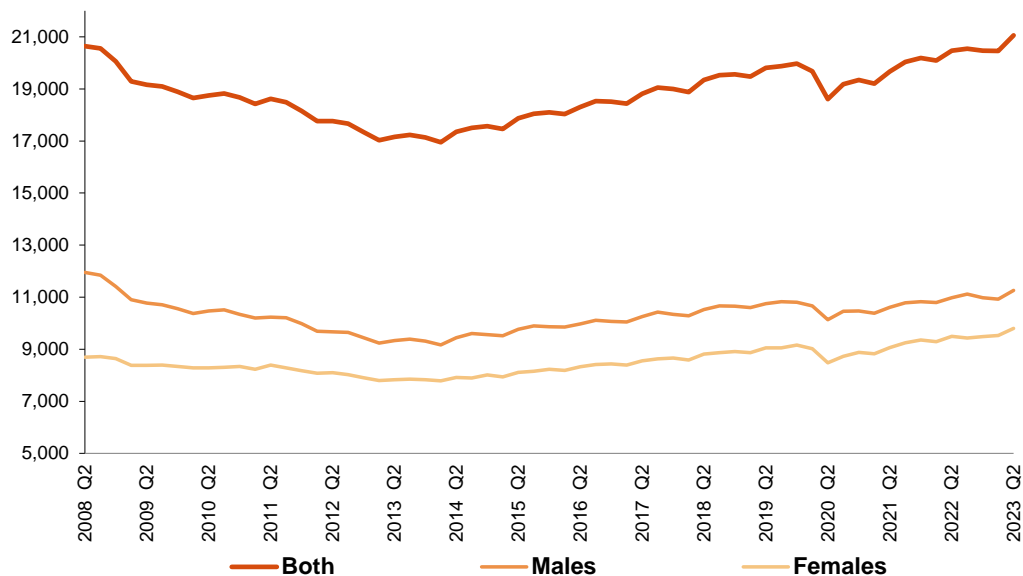
### 5. Employed and unemployed persons by sex. Activity and unemployment rates

	Both sexes				Males				Females			
	Employed persons	Unemployed persons	Activity rate	Unem. rate	Employed persons	Unemployed persons	Activity rate	Unem. Rate	Employed persons	Unemployed persons	Activity rate	Unem. Rate
TOTAL	21,056.7	2,762.5	58.97	11.60	11,257.1	1,277.4	63.93	10.19	9,799.6	1,485.0	54.29	13.16
Andalucía	3,380.1	744.6	57.51	18.05	1,862.5	335.0	62.71	15.24	1,517.6	409.6	52.54	21.25
Aragón	594.6	55.9	58.71	8.59	322.7	19.7	63.30	5.74	271.9	36.2	54.32	11.76
Asturias, Principado de	399.4	46.6	50.40	10.45	205.1	20.9	53.88	9.26	194.2	25.7	47.27	11.68
Balears, Illes	640.3	49.3	65.01	7.15	332.6	24.9	68.07	6.96	307.7	24.4	62.02	7.36
Canarias	999.1	179.8	59.37	15.25	547.9	82.2	64.85	13.04	451.1	97.6	54.11	17.79
Cantabria	255.8	22.6	55.38	8.12	135.8	8.8	59.56	6.10	120.0	13.8	51.47	10.31
Castilla y León	1,010.4	100.7	54.60	9.06	552.3	47.5	60.08	7.91	458.1	53.2	49.33	10.40
Castilla-La Mancha	890.5	133.2	59.53	13.01	505.7	58.6	65.63	10.39	384.8	74.6	53.43	16.23
Cataluña	3,654.0	336.8	61.48	8.44	1,895.8	176.6	65.98	8.52	1,758.2	160.2	57.26	8.35
Comunitat Valenciana	2,240.6	311.3	58.45	12.20	1,210.0	147.6	63.90	10.87	1,030.6	163.8	53.28	13.71
Extremadura	416.6	85.6	56.40	17.05	237.7	36.6	62.51	13.34	178.9	49.0	50.46	21.52
Galicia	1,130.2	119.7	53.22	9.58	584.7	57.2	57.16	8.91	545.5	62.5	49.60	10.29
Madrid, Comunidad de	3,301.6	349.2	63.43	9.56	1,714.4	148.7	68.29	7.98	1,587.3	200.5	59.04	11.21
Murcia, Región de	664.9	93.7	59.54	12.35	369.7	47.5	65.86	11.38	295.2	46.2	53.29	13.52
Navarra, Comunidad Foral de	296.2	28.5	58.84	8.79	157.3	13.6	63.02	7.97	138.9	14.9	54.81	9.71
País Vasco	977.6	75.0	56.95	7.13	510.6	39.2	61.87	7.12	467.0	35.9	52.39	7.14
Rioja, La	146.7	11.8	59.21	7.46	79.6	4.9	64.27	5.83	67.1	6.9	54.33	9.32
Ceuta	29.1	11.0	61.29	27.37	16.9	4.3	65.63	20.38	12.2	6.6	57.04	35.26
Melilla	29.1	7.0	56.69	19.42	16.0	3.6	61.74	18.58	13.2	3.4	51.68	20.40

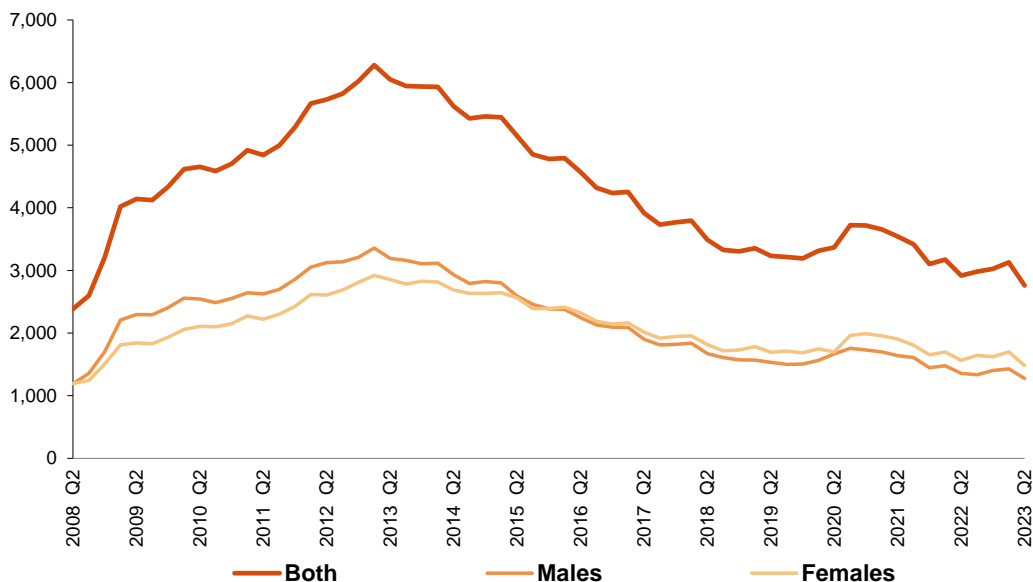
\* Data below 5,000 are subject to strong variations, due to sampling errors

**Employed and Unemployed by sex** EAPS  
**Second Quarter 2023**

**Employed. Thousands**



**Unemployed. Thousands**

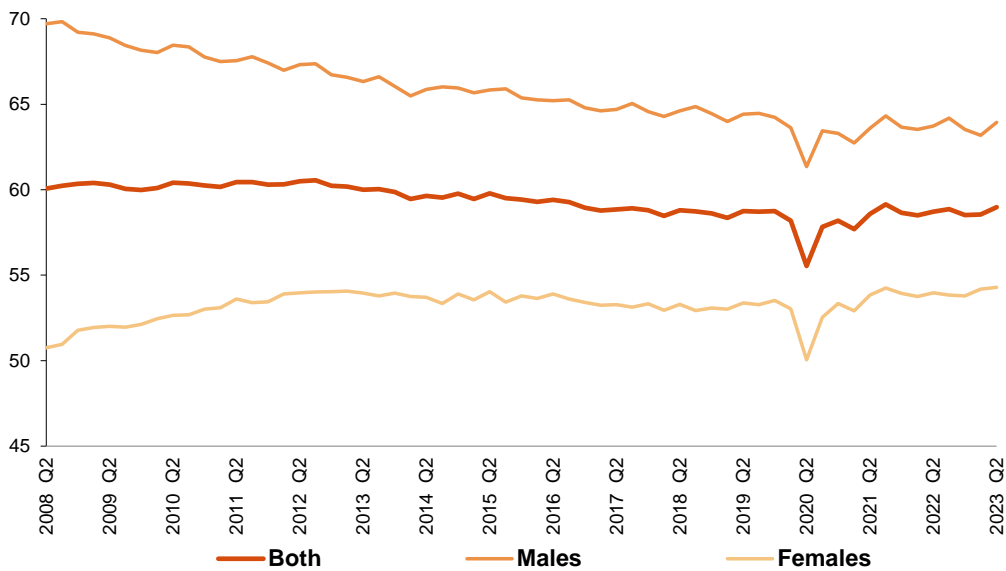




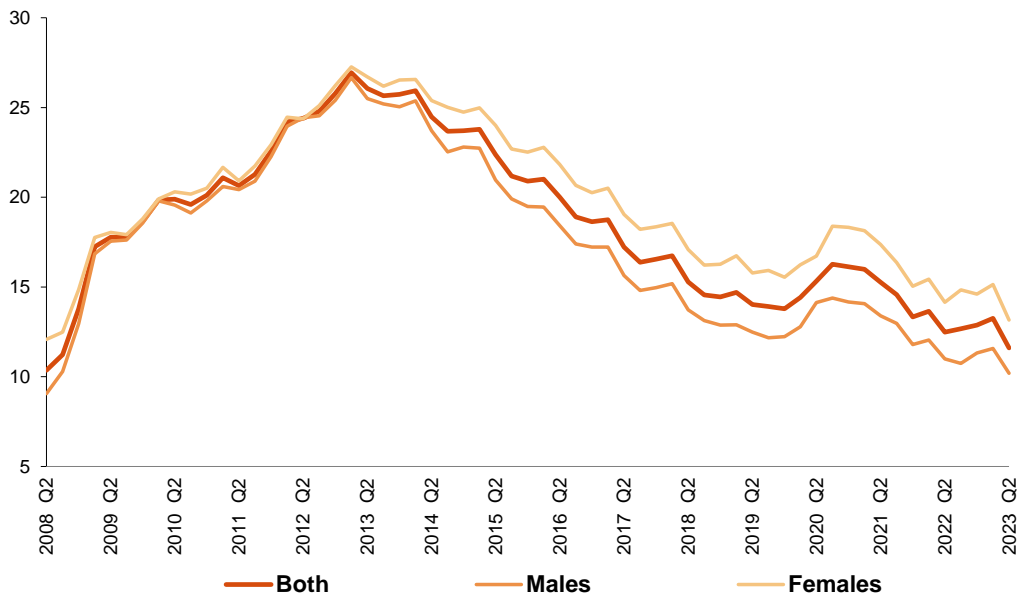
**Activity and unemployment rates by sex**  
Second Quarter 2023

EAPS

**Activity rate. Percentage**



**Unemployment rate. Percentage**

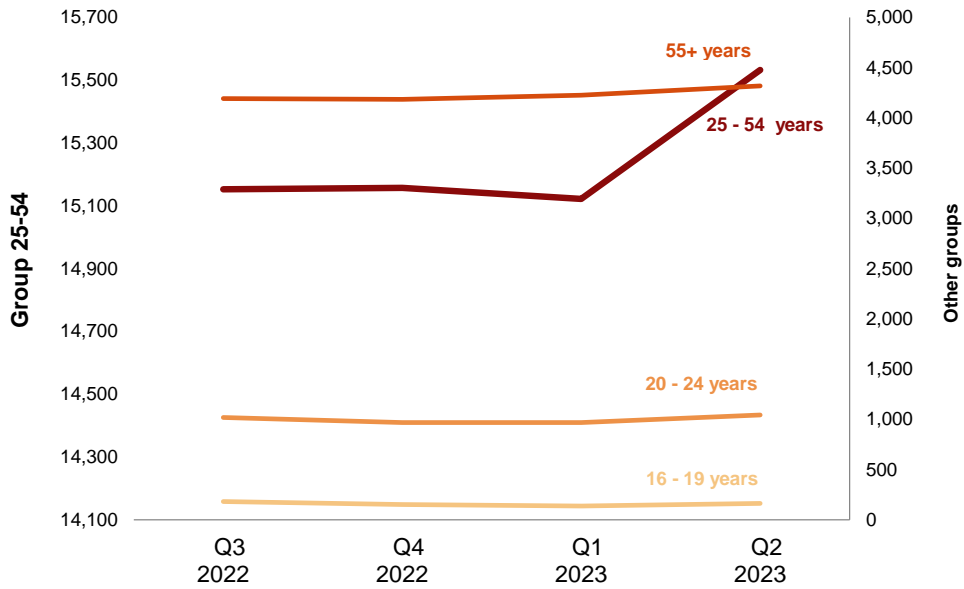


## Employment by age

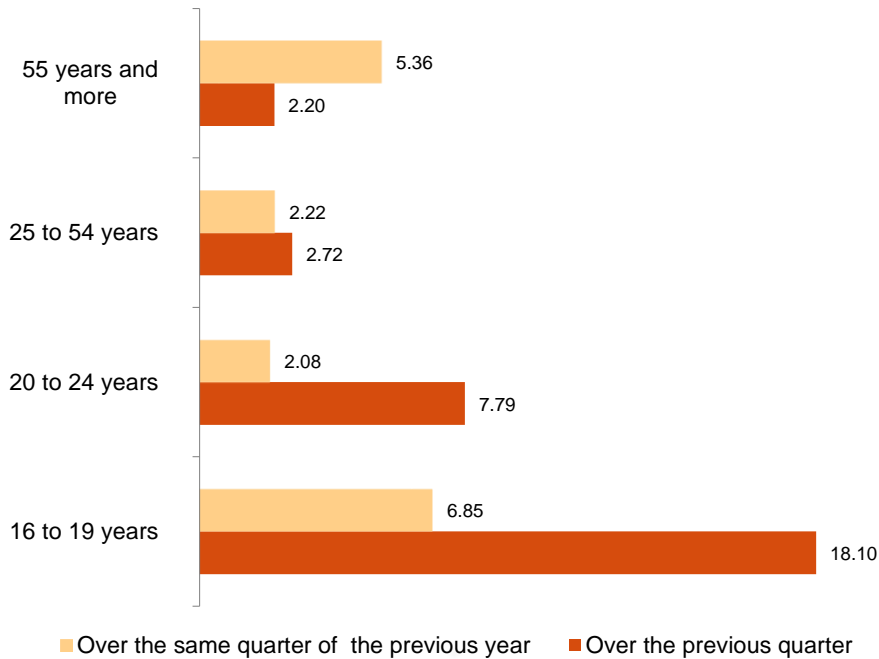
Second Quarter 2023

EAPS

Employment. Thousands



Variation of employment. Thousands

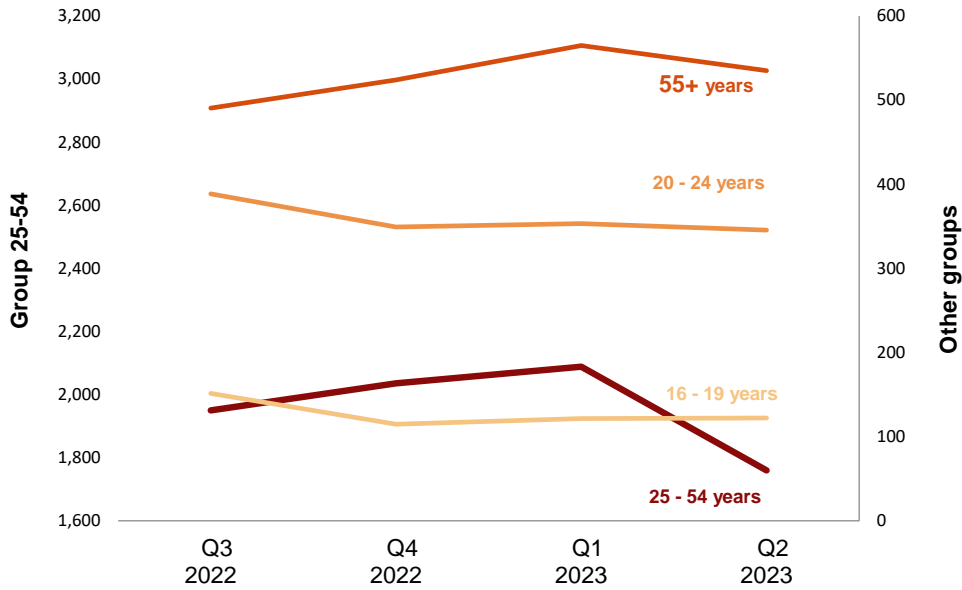


## Unemployment by age

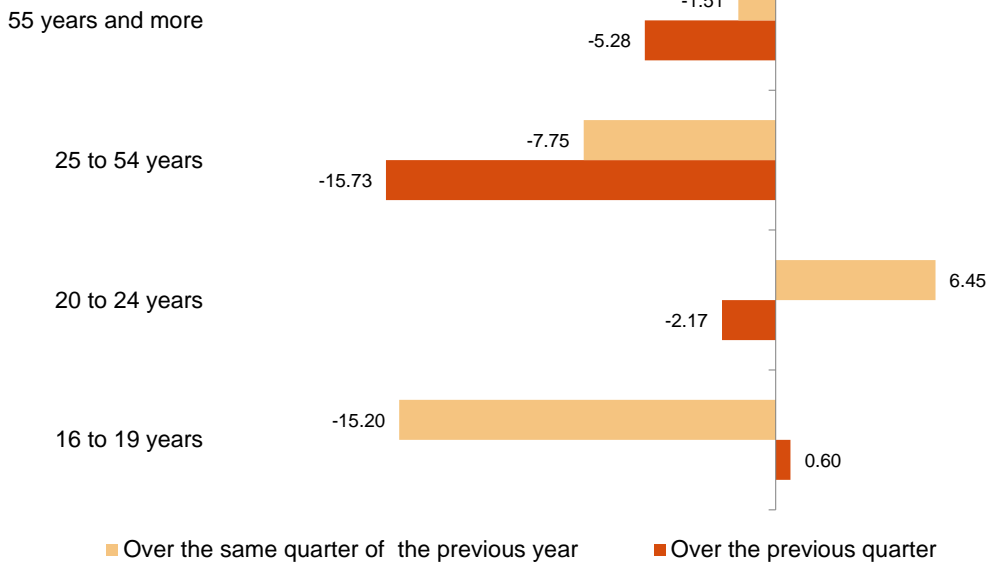
Second Quarter 2023

EAPS

Unemployment. Thousands



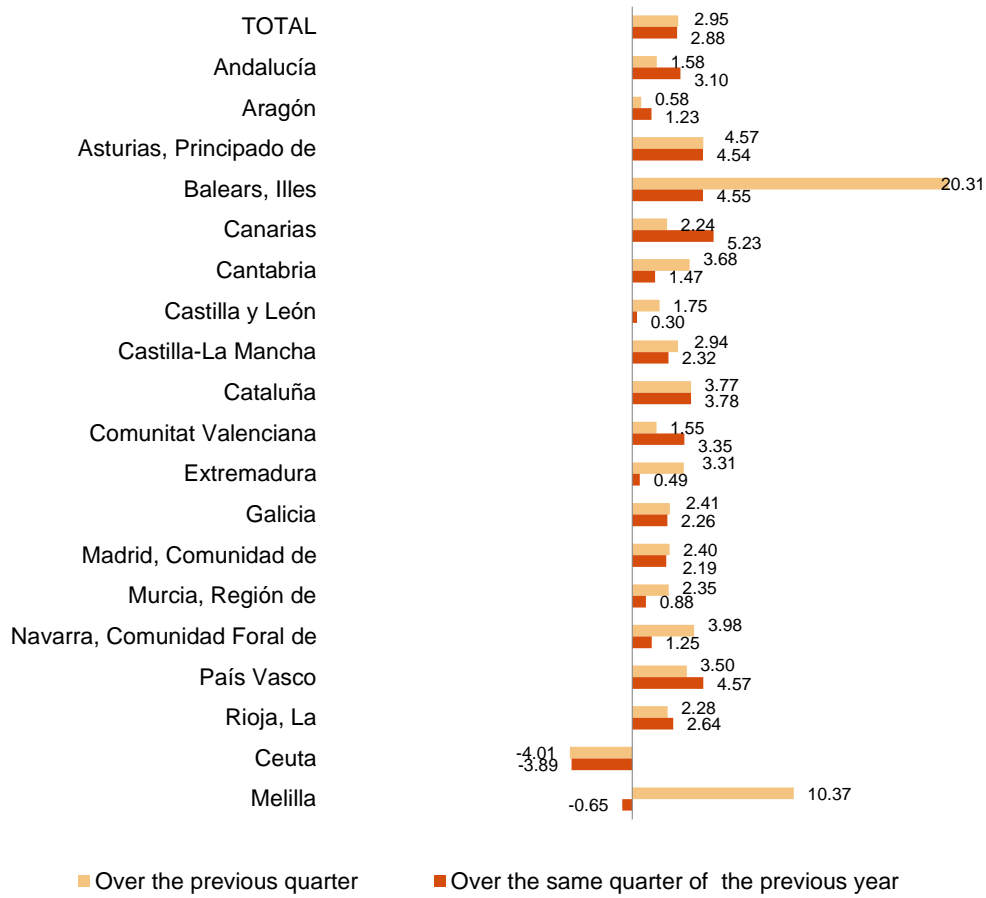
Variation of unemployment. Thousands



Second Quarter 2023

EAPS

**Variation of employment. Percentage**



**Unemployment rate** Percentage  
(Spain= 11.60 )

