

Economically Active Population Survey (EAPS)

Third quarter of 2012

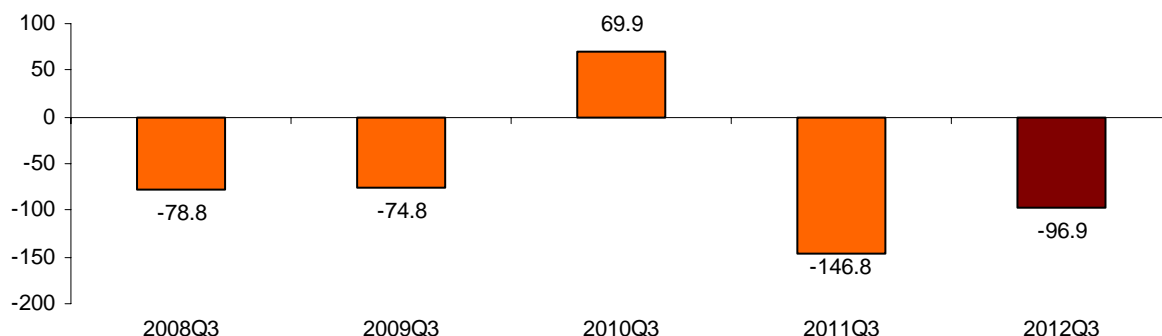
Main results

- Employment in the third quarter of 2012 registers a decrease of 96,900 persons, reaching a total of 17,320,300 employed persons. The quarterly employment variation rate stands at -0.56% . Employment decreases by 49,400 persons in public employment and by 47,600 in private employment.
- The number of self-employed workers increases 65,100 this quarter. Among them, 56,500 are independent workers or businesspersons without wage earners. Wage earners with a permanent contract decrease by 179,400, and wage earners with a temporary contract increase by 15,300.
- Employment increases by 3,700 persons in *Industry*, decreases by 56,100 in *Construction*, by 32,700 in *Services* and by 11,900 in *Agriculture*.
- The Autonomous Communities with the greatest increases in employment are: Illes Balears (25,200 more persons), Extremadura (16,300) and Galicia (14,000). In contrast, the Autonomous Communities that registered the greatest decreases in employment this quarter are: Andalucía (58,400 fewer employed persons), Cataluña (36,300) and País Vasco (25,100).
- The number of unemployed persons increases by 85,000 persons and stands at 5,778,100. The unemployment rate increases 38 hundredths, standing at 25.02%.
- The greatest decreases in the number of unemployed persons are registered in Comunidad de Madrid (15,100 fewer unemployed persons this quarter), Galicia (11,900) and Castilla-La Mancha (9,600). In turn, Andalucía (61,300), Comunitat Valenciana (26,500) and Región de Murcia (20,600) register the greatest increases in the number of unemployed persons.
- The economically active population decreases by 12,000 persons. The activity rate increases four hundredths, reaching 60.12%.

Employment

The number of employed persons decreased by 96,900 persons in the third quarter of 2012, standing at 17,320,300. The quarterly variation rate of employment stood at -0.56% . The quarterly employment rate was negative this quarter, though to a lesser extent than the 146,800 jobs lost the same quarter last year.

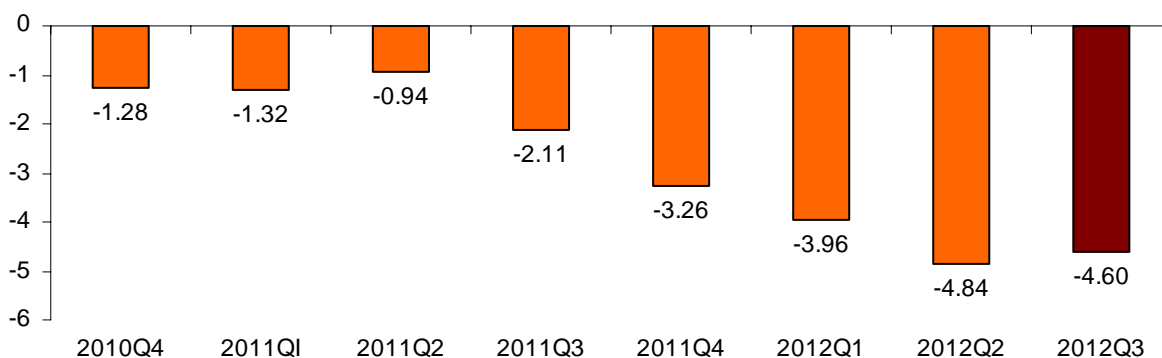
Quarter-on-quarter performance of employment, in thousands⁽¹⁾
(variation of the 3rd quarter over the 2nd quarter the same year)



By sex, the drop in employment was greater among women (68,700 fewer employed women) than among men (28,200 fewer employed men). By nationality, the number of employed foreign nationals increased by 4,400, while that of Spaniards decreased by 92,500. By age, employment grew by 43,600 persons among persons under 25 years of age. The greatest decrease was observed in the group aged 25-34 years old (127,800 fewer).

In the last 12 months, employment has dropped by 835,900 persons, affecting men more than women (565,500 and 270,400, respectively). The annual variation rate of employment was -4.60% this quarter, 24 hundredths better than that registered the previous quarter.

Performance of the total employed persons, as an annual rate



¹ In order to contribute to the analysis and interpretation of the data, new graphs have been added with the performance in the quarter-on-quarter variation in absolute values. These variations have a certain seasonal behaviour, and therefore, their assessment must be made with regard to the data from the same quarter of previous years.

The number of employed persons increased in *Industry*, registering 3,700 more employed persons. Employment decreased in *Construction* (56,100 fewer employed persons), *Services* (32,700) and *Agriculture* (11,900).

Full-time employment increased by 14,800 persons this quarter, whilst part-time employed persons decreased by 111,800. The percentage of persons working part-time decreased more than half-a-point, reaching 14.37%.

The number of self-employed workers increased by 65,100 persons this third quarter. Among them, 56,500 were either independent workers or businesspersons without wage earners.

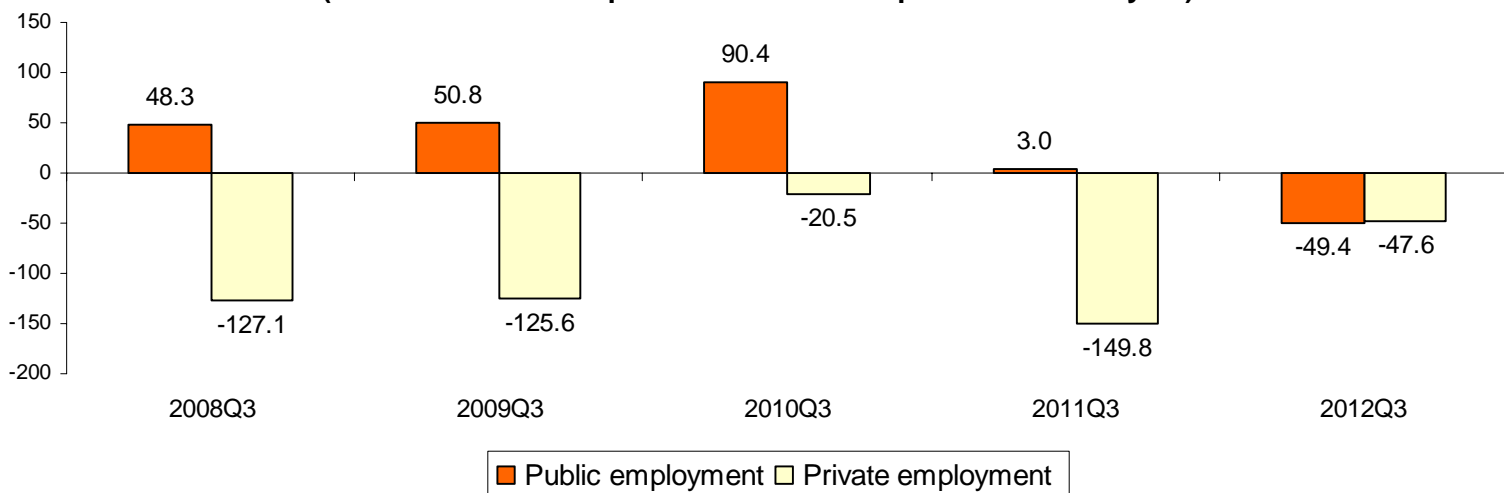
The number of wage earners decreased by 164,100. Those with a temporary contract increased by 15,300, while the number of wage earners with permanent contracts decreased by 179,400. The temporary employment rate increased 38 hundredths, standing at 24.04%.

The number of wage earners dropped by 946,200 over the last 12 months, whereas the number of self-employed workers increased by 108,400.

In order to offer a more detailed performance of employment, this quarter, the tables attached to the press release presented the data relating to wage earners in public employment, and to the remaining employed persons, constituting *private employment*².

Thus, this quarter the aforementioned private employment decreased by 47,600 persons, standing at 14,328,600. In turn, public employment decreased by 49,400, standing at less than 3 million persons (2,991,700). This is the lowest level since the third quarter of 2008.

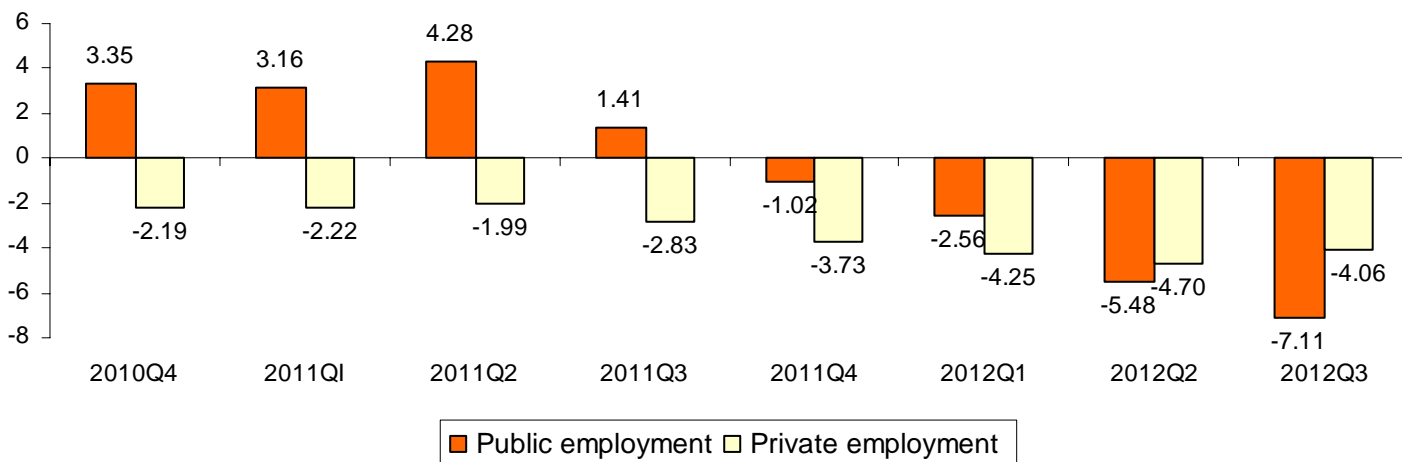
**Quarter-on-quarter performance of employment by nature of the employer, in thousands
(variation of the 3rd quarter over the 2nd quarter the same year)**



² Employment in the private sector is the difference between the total of the employed persons and the wage earners from the public sector. In other words, it includes: wage earners from the private sector, employers, independent workers and businesspersons without wage earners, members of a cooperative, family assistance and other professional situations.

Both public and private employment showed negative annual variation rates. Public employment registered a -7,1% rate, while employment decreased at a rate of 4.1% in the private sector.

Performance of employment by nature of the employer, as an annual rate

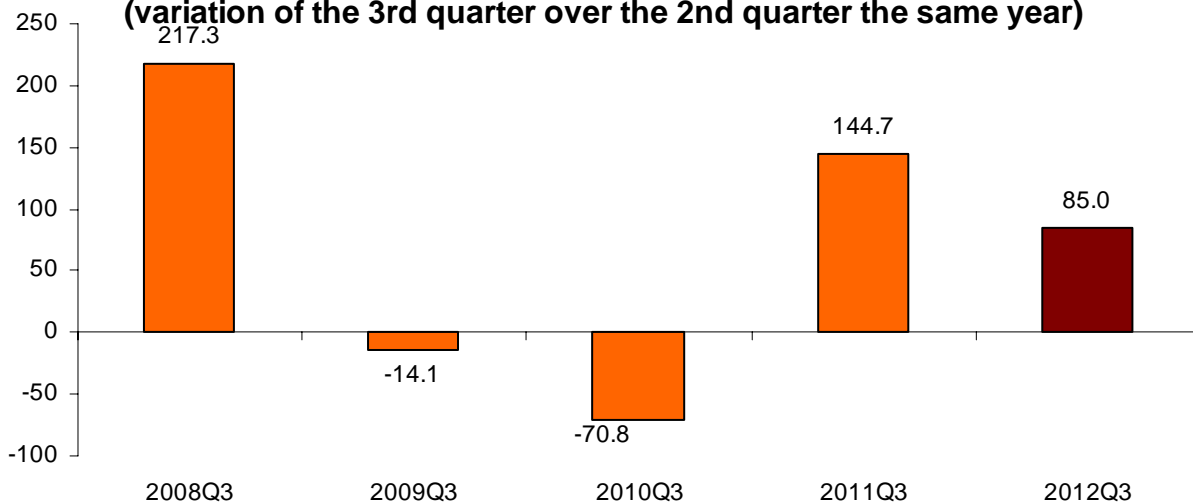


Unemployment and the unemployment rate

Unemployment increased by 85,000 persons this quarter, standing at 5,778,100. Over the last year, the total figure of unemployed persons increased by 799,700 persons.

The performance of unemployment this quarter, as compared with the same period of previous years, was worth noting in that the quarterly increase of unemployment was lower than that registered in the third quarter of 2011, which had recorded an increase of 144,700 unemployed persons.

Quarter-on-quarter performance of unemployment, in thousands (variation of the 3rd quarter over the 2nd quarter the same year)



The unemployment rate rose 38 hundredths, as compared with the second quarter of 2012, standing at 25.02%.

By sex, unemployment increased by 9,500 men and 75,500 women. The male unemployment rate increased 11 hundredths, reaching 24.68%, whilst the female rate

increased seven tenths, and stood at 25.41%. The composition of unemployment observed since the year 2008 remained practically unaltered, with relatively little distance between the male and female rates, and a greater number of unemployed men than unemployed women.

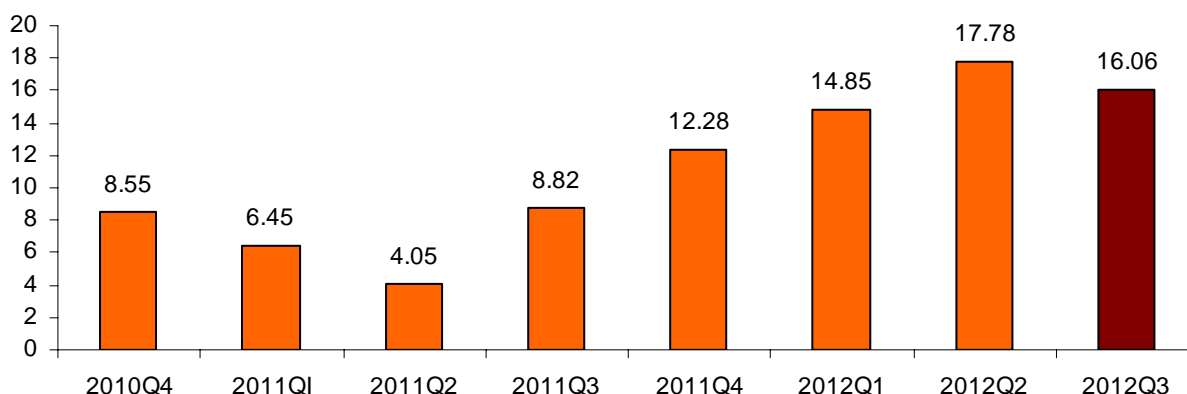
By nationality, unemployment increased by 136,000 Spaniards and decreased by 51,000 foreign nationals. The unemployment rate for the foreign population was 34.84%, 11.5 points higher than that of persons with Spanish nationality (23.32%).

Unemployment decreased in *Construction* (35,900 fewer unemployed persons), in *Services* (28,100 fewer) and in *Industry* (11,100 fewer). Conversely, unemployment increased in *Agriculture* (17,600 more unemployed persons). Unemployment also increased among those persons who had lost their job over a year ago (83,300 more), and among those seeking their first job (59,100).

The number of unemployed persons increased in all sectors in the last 12 months, except in *Construction* (49,700 fewer). Unemployed persons who had lost their job over a year ago increased by 458,800.

Regarding annual performance, the unemployment rate (16.06%) was moderated, as compared with that from the previous quarter.

Performance of the total unemployed persons, as an annual rate

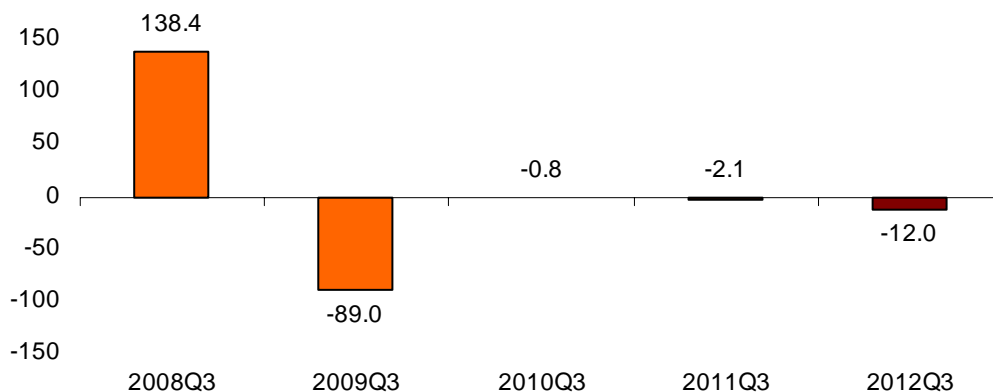


Economically active population and the activity rate

The economically active population experienced a decrease of 12,000 persons in the third quarter of 2012, standing at 23,098,400 persons. In annual terms, the number of economically active persons decreased by 36,200 persons.

The decrease in the number of economically active persons in the third quarter of 2012 was slightly greater than that registered in the third quarters of 2010 and 2011.

**Quarter-on-quarter performance of economic activity, in thousands
(variation of the 3rd quarter over the 2nd quarter the same year)**

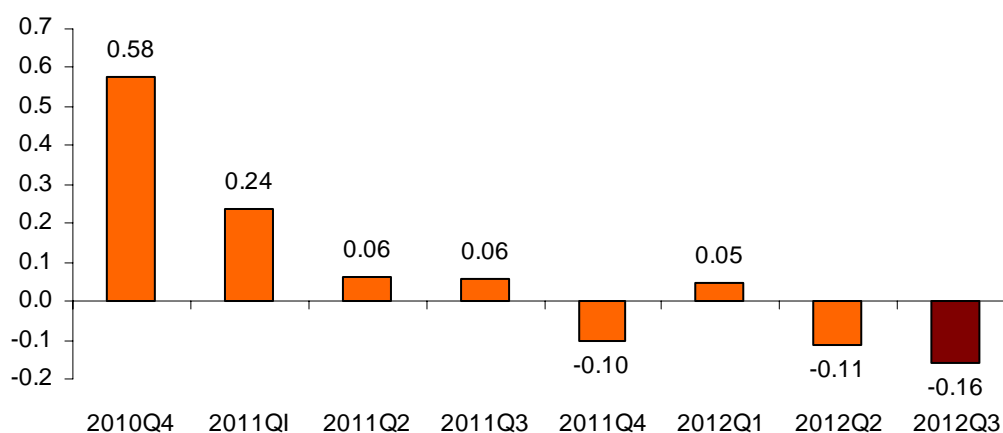


The economic activity rate increased four hundredths, reaching 60.12%. The female activity rate increased 0.06, standing at 53.41%, while the male rate increased three hundredths and reached 67.18%.

The economic activity rate of Spaniards rose 13 hundredths, reaching 58.17, while the rate for foreign nationals decreased 43 hundredths, standing at 74.67 this quarter. The distance between the activity rates of Spaniards and foreign nationals was 16.5 points, in favour of the latter, this circumstance being explained by the different age structures of the two populations.

The annual variation rate presented a downward trend over the last two years, only interrupted in the first quarter of 2012.

Performance of the total economically active persons, as an annual rate



Mobility as related to economic activity

The percentage of employed persons who were inactive in the previous quarter was now 5.30%, 39 hundredths more than that recorded in the second quarter of 2012.

The proportion of unemployed persons who were employed three months ago increased more than one point, reaching 15.17%. The percentage of unemployed persons for the third quarter of 2012 who were already unemployed three months prior decreased 2.56 points, standing at 67.64%. The percentage of unemployed persons who were inactive three months ago increased 1.48 points, up to 17.19%.

Households

In the third quarter, there were 17,417,700 households in Spain, reflecting an increase of 20,100 new households, as compared with the second quarter, and 100,300 in the last year.

The number of households in which all economically active members were unemployed, barely experienced any change during this third quarter, standing at 1,737,900. Conversely, the number of households in which all of the economically active members were employed decreased by 58,800, reaching 8,521,700.

In an interannual comparison, the number of households in which all economically active persons were unemployed increased by 312,700, and the number of those in which all economically active members were employed decreased by 536,700.

Results by Autonomous Community

The greatest increases of economically active persons in the labour market were in Illes Balears (25,200), Extremadura (16,300) and Galicia (14,000). Conversely, the greatest decreases were recorded in Andalucía (58,400 fewer), Cataluña (36,300) and País Vasco (25,100).

The greatest decreases in employment over the last 12 months were registered in Cataluña (192,100 fewer employed persons), Andalucía (155,700) and Comunitat Valenciana (82,600).

The number of unemployed persons decreased this quarter in Comunidad de Madrid (15,100 fewer), Galicia (11,900) and Castilla-La Mancha (9,600). In contrast, 61,300 more unemployed persons were registered in Andalucía, 26,500 in Comunitat Valenciana and 20,600 in Región de Murcia.

The greatest annual increases in unemployment were registered in Andalucía (191,300 more unemployed persons), Cataluña (98,400) and Comunitat Valenciana (84,700).

Comunidad Foral de Navarra maintained an unemployment rate lower than 15%. At the other end of the spectrum, Andalucía, Canarias and Extremadura registered rates higher than 32%.

The incorporation of economically active persons in the labour market was particularly significant this quarter in Extremadura (19,000 more economically active persons) and in Illes Balears (17,600). In contrast, the number of economically active persons in the labour market decreased in Comunidad de Madrid (25,700), País Vasco (18,500) and Cataluña (17,500).

In the last 12 months, the number of economically active persons decreased by 93,700 persons in Cataluña and 41,800 in País Vasco. During this period, the greatest increases were in Andalucía (35,600 more) and Extremadura (23,700).

The economic activity rates this quarter ranged between the 69.14% recorded in Illes Balears, and the 52.72% registered in Principado de Asturias.

Results by province

The provincial results summary of the EAPS may be accessed via the following link:

http://www.ine.es/en/daco/daco42/daco4211/epapro0312_en.pdf

All of the provincial information from this survey may be accessed via the following links:

- In the INEbase database
<http://www.ine.es/jaxiBD/menu.do?L=1&divi=EPA&his=0&type=db>
- In the TEMPUS database
<http://www.ine.es/menu/redir/GSTConsul.shtml?divi=EPA>

Methodological note

General features

The Economically Active Population Survey (EAPS) is a continuous sample-based study aimed at family dwellings, and which has been conducted since 1964.

The additional sample collected by the *Galician Statistics Institute* (IGE) has been incorporated as of the third quarter of 2009, using the same fieldwork system and identical methodology to that of the INE. Therefore, apart from the 3,588 census sections that have made up the sample for the whole of Spain since 2005, we must take into account the 234 additional sections in the Autonomous Community of Galicia. Since the third quarter of 2009, the EAPS sample is made up of 3,822 census sections from the more than 30,000 census sections into which Spain is divided. An average of 18 households are surveyed in each one, except in the provinces of Barcelona, Madrid, Sevilla, Valencia and Zaragoza, where the number of households surveyed is 22. Thus, the sample size is approximately 65,000 dwellings, providing information on some 180,000 persons. The data is collected via personal and telephone interviews. The information is carefully filtered and computer-processed. Results are obtained within the month following the end of the reference quarter for the data.

Main definitions

(Economically) Active persons: persons aged 16 years old and over who, during the reference week (the week prior to that when the interview is held), supplied labour for the production of goods and services, or were available to do so and in conditions to incorporate themselves into said production. They are divided into employed and unemployed persons.

Employed persons: persons aged 16 years old and over who, during the reference week, worked for at least one hour in exchange for payment (salary, wage, business benefit, etc.) in cash or in kind. Persons who, being employed, had been temporarily absent from their job due to illness, holidays, etc., are also considered employed persons.

Employed persons are classified, considering their professional status, as non-wage earners (employers, businesspersons without wage earners and independent workers, cooperative members, family assistance) and wage earners (public or private).

Considering the length of the working day, employed persons are classified as full-time and part-time employed persons. The usual working week may not be shorter than 30 hours in the first case, nor exceed 35 hours in the second.

Wage earners are classified as permanent and temporary. For the latter, the end of their contract or work relationship is set by means of objective conditions, such as the expiry of a certain period of time, the completion of a specific task, etc.

A significant category within employment is that of **time-related underemployment**, defined in the 16th International Labour Statisticians Conference (Geneva, 1998). The EAPS considers persons suffering time-related underemployment as employed persons who would like to work more hours, who are available to work more hours and whose effective working hours in the reference week are less than the number of hours usually worked by employed persons working full-time in the same branch of activity as that in which the underemployed person develops his/her main job.

Unemployed persons: persons aged 16 years old and over who, during the reference week, were jobless, available for work, and actively looking for a job. Persons who might have already found a job and are waiting to start are also considered to be unemployed, provided that they meet the first two conditions.

According to European Commission Regulation 1897/2000, the following are considered to be active search methods, in the four weeks prior to the interview:

- Being in contact with a public employment office for the purpose of finding work, whatever part they play in the initiative (the renewal of registration due to purely administrative reasons does not constitute active planning).
- Being in contact with a private office (temporary employment agency, specialised hiring agency, etc.) with the objective of finding work.
- Having sent an application directly to employers.
- Having searched via personal relations and trade unions, etc.
- Having advertised oneself or responded to newspaper advertisements.
- Having studied job vacancies.
- Having taken part in a test, public exam or interview in the framework of a contracting procedure.
- Having looked for land, premises or material.
- Having taken steps to obtain permits, licences or financial resources.

(Economically) Inactive persons: persons aged 16 years old and over not included in any of the above categories.

Economically Active Population Survey Third Quarter 2012

National results

(Continues)

	Current quarter	Variation on previous quarter		Variation on same quarter, previous year	
		Difference	Percentage	Difference	Percentage
1. Population aged 16 years and over by sex and labour status					
BOTH SEXES					
Population aged 16 years and over	38,420.3	-47.1	-0.12	-67.5	-0.18
Active population	23,098.4	-12.0	-0.05	-36.2	-0.16
- Employed	17,320.3	-96.9	-0.56	-835.9	-4.60
- Unemployed	5,778.1	85.0	1.49	799.7	16.06
Inactive	15,321.9	-35.1	-0.23	-31.3	-0.20
Activity rate	60.12	0.04	-	0.01	-
Unemployment rate	25.02	0.38	-	3.50	-
Population aged 16 to 64 years	30,457.2	-84.1	-0.28	-222.1	-0.72
Activity rate (16-64)	75.28	0.16	-	0.36	-
Unemployment rate (16-64)	25.17	0.39	-	3.52	-
Employment rate (16-64)	56.33	-0.17	-	-2.37	-
MALES					
Population aged 16 years and over	18,712.4	-37.5	-0.20	-75.9	-0.40
Active population	12,571.8	-18.7	-0.15	-136.2	-1.07
- Employed	9,468.5	-28.2	-0.30	-565.5	-5.64
- Unemployed	3,103.3	9.5	0.31	429.4	16.06
Inactive	6,140.6	-18.8	-0.31	60.2	0.99
Activity rate	67.18	0.03	-	-0.45	-
Unemployment rate	24.68	0.11	-	3.64	-
Population aged 16 to 64 years	15,288.5	-54.6	-0.36	-147.0	-0.95
Activity rate (16-64)	81.61	0.16	-	-0.18	-
Unemployment rate (16-64)	24.84	0.12	-	3.67	-
Employment rate (16-64)	61.34	0.02	-	-3.14	-
FEMALES					
Population aged 16 years and over	19,707.9	-9.5	-0.05	8.4	0.04
Active population	10,526.6	6.7	0.06	100.0	0.96
- Employed	7,851.8	-68.7	-0.87	-270.4	-3.33
- Unemployed	2,674.7	75.5	2.90	370.4	16.07
Inactive	9,181.3	-16.2	-0.18	-91.5	-0.99
Activity rate	53.41	0.06	-	0.48	-
Unemployment rate	25.41	0.70	-	3.31	-
Population aged 16 to 64 years	15,168.7	-29.5	-0.19	-75.1	-0.49
Activity rate (16-64)	68.90	0.17	0.24	0.93	1.37
Unemployment rate (16-64)	25.56	0.70	2.82	3.33	14.97
Employment rate (16-64)	51.29	-0.36	-0.70	-1.57	-2.97

2. Spanish population⁽¹⁾ aged 16 years and over by labour status

SPANISH POPULATION AGED 16 YEARS AND OVER	33,875.0	0.6	0.00	37.0	0.11
Active population	19,704.5	43.5	0.22	97.7	0.50
- Employed	15,108.8	-92.5	-0.61	-673.9	-4.27
- Unemployed	4,595.7	136.0	3.05	771.6	20.18
Inactive	14,170.5	-43.0	-0.30	-60.7	-0.43
Activity rate	58.17	0.13	-	0.23	-
Unemployment rate	23.32	0.64	-	3.82	-

⁽¹⁾ including dual nationality

October 26th 2012

National results

(Continuation)

	Current quarter	Variation on previous quarter		Variation on same quarter, previous year		
		Difference	Percentage	Difference	Percentage	
3. Foreign population aged 16 years and over by labour status						
FOREIGN POPULATION AGED 16 YEARS AND OVER	4,545.3	-47.6	-1.04	-104.5	-2.25	
Active population	3,393.9	-55.5	-1.61	-133.9	-3.80	
- Employed	2,211.5	-4.4	-0.20	-162.0	-6.83	
- Unemployed	1,182.4	-51.0	-4.14	28.1	2.44	
Inactive	1,151.4	7.9	0.69	29.4	2.62	
Activity rate	74.67	-0.43	-	-1.20	-	
Unemployment rate	34.84	-0.92	-	2.12	-	
4. Employed by sex, age group and economic sector						
BOTH SEXES	17,320.3	-96.9	-0.56	-835.9	-4.60	
16 to 19 years	93.8	8.0	9.31	-60.4	-39.17	
20 to 24 years	789.6	35.6	4.73	-140.6	-15.12	
25 to 29 years	1,721.7	-58.4	-3.28	-246.5	-12.53	
30 to 34 years	2,478.2	-69.4	-2.73	-230.0	-8.49	
35 to 39 years	2,799.1	-1.4	-0.05	-61.4	-2.15	
40 to 44 years	2,573.8	-1.4	-0.06	-63.9	-2.42	
45 to 49 years	2,373.2	-14.6	-0.61	-37.9	-1.57	
50 to 54 years	2,030.7	-4.3	-0.21	-26.3	-1.28	
55 and over	2,460.5	9.0	0.37	31.2	1.29	
MALES	9,468.5	-28.2	-0.30	-565.5	-5.64	
16 to 19 years	53.8	4.4	9.00	-31.9	-37.20	
20 to 24 years	411.2	29.9	7.85	-62.9	-13.26	
25 to 29 years	870.5	-19.5	-2.20	-151.0	-14.78	
30 to 34 years	1,320.7	-32.2	-2.38	-142.5	-9.74	
35 to 39 years	1,535.8	2.2	0.15	-59.2	-3.71	
40 to 44 years	1,424.2	-7.2	-0.51	-53.2	-3.60	
45 to 49 years	1,310.1	0.1	0.01	-35.2	-2.62	
50 to 54 years	1,128.1	-1.4	-0.12	-32.5	-2.80	
55 and over	1,414.1	-4.6	-0.33	2.8	0.20	
FEMALES	7,851.8	-68.7	-0.87	-270.4	-3.33	
16 to 19 years	40.0	3.5	9.73	-28.5	-41.64	
20 to 24 years	378.4	5.7	1.53	-77.8	-17.05	
25 to 29 years	851.1	-38.9	-4.37	-95.5	-10.09	
30 to 34 years	1,157.5	-37.3	-3.12	-87.6	-7.03	
35 to 39 years	1,263.3	-3.7	-0.29	-2.2	-0.17	
40 to 44 years	1,149.6	5.8	0.51	-10.7	-0.92	
45 to 49 years	1,063.1	-14.7	-1.37	-2.7	-0.25	
50 to 54 years	902.6	-2.9	-0.32	6.2	0.69	
55 and over	1,046.3	13.7	1.32	28.4	2.79	
TOTAL EMPLOYED	17,320.3	-96.9	-0.56	-835.9	-4.60	
Agriculture	720.4	-11.9	-1.63	12.7	1.79	
Industry	2,442.0	3.7	0.15	-134.3	-5.21	
Construction	1,136.8	-56.1	-4.70	-233.9	-17.07	
Services	13,021.2	-32.7	-0.25	-480.3	-3.56	

National results

(Continuation)

	Current quarter	Variation on previous quarter		Variation on same quarter, previous year	
		Difference	Percentage	Difference	Percentage
5. Employed by professional status, type of contract, public / private sectors and working hours					
TOTAL EMPLOYED	17,320.3	-96.9	-0.56	-835.9	-4.60
BY PROFESSIONAL STATUS					
Self-employed workers	3,077.4	65.1	2.16	108.4	3.65
- Employers	933.9	9.1	0.98	-1.6	-0.17
- Independent workers	1,986.7	56.5	2.93	108.3	5.76
- Cooperatives members	24.2	-5.5	-18.46	-7.1	-22.77
- Family workers	132.5	5.0	3.89	8.9	7.18
Employees	14,233.1	-164.1	-1.14	-946.2	-6.23
- With a permanent job	10,811.4	-179.4	-1.63	-417.6	-3.72
- With a temporary job	3,421.8	15.3	0.45	-528.6	-13.38
Others	9.8	2.1	27.25	1.9	23.98
BY PUBLIC / PRIVATE SECTORS (*)					
Employed by public sector	2,991.7	-49.4	-1.62	-228.8	-7.11
Employed by private sector	14,328.6	-47.6	-0.33	-607.1	-4.06
BY WORKING HOURS					
Full-time employed	14,831.8	14.8	0.10	-925.9	-5.88
Males	8,830.1	-25.0	-0.28	-624.3	-6.60
Females	6,001.7	39.8	0.67	-301.6	-4.79
Part-time employed	2,488.5	-111.8	-4.30	90.0	3.75
Males	638.4	-3.2	-0.50	58.8	10.14
Females	1,850.1	-108.6	-5.54	31.2	1.72

*) Private employment are all persons in employment other than public employees. Namely: private employees, employers, independent workers, cooperative members, family workers and other professional status.

6. Unemployed by sex, age group, and economic sector

BOTH SEXES	5,778.1	85.0	1.49	799.7	16.06
16 to 19 years	241.6	6.4	2.73	5.5	2.34
20 to 24 years	728.6	6.3	0.87	46.7	6.86
25 to 54 years	4,304.0	64.1	1.51	648.7	17.75
55 and over	503.9	8.2	1.66	98.8	24.39
MALES	3,103.3	9.5	0.31	429.4	16.06
16 to 19 years	133.2	1.5	1.13	-2.1	-1.55
20 to 24 years	389.8	6.8	1.78	26.9	7.41
25 to 54 years	2,291.1	-3.9	-0.17	353.9	18.27
55 and over	289.2	5.1	1.80	50.7	21.28
FEMALES	2,674.7	75.5	2.90	370.4	16.07
16 to 19 years	108.4	4.9	4.75	7.6	7.57
20 to 24 years	338.8	-0.5	-0.16	19.9	6.23
25 to 54 years	2,012.8	68.0	3.49	294.8	17.16
55 and over	214.7	3.1	1.46	48.0	28.83
TOTAL UNEMPLOYED	5,778.1	85.0	1.49	799.7	16.06
Agriculture	298.4	17.6	6.28	46.4	18.43
Industry	309.1	-11.1	-3.46	91.3	41.92
Construction	405.8	-35.9	-8.12	-49.7	-10.91
Services	1,637.4	-28.1	-1.69	159.8	10.82
Lost their job more than 1 year ago	2,576.1	83.3	3.34	458.8	21.67
First job seekers	551.3	59.1	12.02	93.1	20.32

National results

(Conclusion)

	Current quarter	Variation on previous quarter		Variation on same quarter, previous year	
		Difference	Percentage	Difference	Percentage

7. Unemployment rate by relationship with the reference person

TOTAL	25.02	0.38	1.54	3.50	16.25
Reference person	20.39	-0.14	-0.66	2.47	13.79
Spouse or partner	20.89	0.68	3.39	3.34	19.00
Child	41.63	0.62	1.51	6.23	17.58
Other relatives	33.47	0.58	1.76	3.18	10.50
Unrelated persons	25.16	2.64	11.72	8.31	49.35

8. Household data

TOTAL HOUSEHOLDS	17,471.7	20.1	0.11	100.3	0.58
Households with at least one active member	13,004.9	-23.6	-0.18	22.3	0.17
- All member employed	8,521.7	-58.8	-0.69	-536.7	-5.92
- All member unemployed	1,737.9	0.2	0.01	312.7	21.94
Households without any active population	4,466.8	43.6	0.99	77.9	1.78

Mobility according to activity in current and previous quarter

Classification in previous quarter	Total	Classification in current quarter		
		Employed	Unemployed	Inactive
BOTH SEXES				
Total	100.00	100.00	100.00	100.00
Employed	45.41	92.26	15.17	3.43
Unemployed	14.18	5.30	67.64	4.73
Inactive	40.41	2.44	17.19	91.84
MALES				
Total	100.00	100.00	100.00	100.00
Employed	50.94	92.92	15.56	3.53
Unemployed	15.69	5.25	71.98	4.55
Inactive	33.37	1.82	12.46	91.92
FEMALES				
Total	100.00	100.00	100.00	100.00
Employed	40.19	91.46	14.71	3.36
Unemployed	12.75	5.36	62.70	4.86
Inactive	47.06	3.18	22.58	91.78

Grossing up factors of current quarter (forward analysis)

Results by Autonomous Communities and Cities

(Continues)

	Current quarter	Variation on previous quarter		Variation on same quarter, previous year	
		Difference	Percentage	Difference	Percentage
1. Population aged 16 years and over					
TOTAL	38,420.3	-47.1	-0.12	-67.5	-0.18
Andalucía	6,803.7	1.9	0.03	15.7	0.23
Aragón	1,103.7	-2.1	-0.19	-7.0	-0.63
Asturias, Principado de	920.2	-1.4	-0.15	-5.9	-0.64
Balears, Illes	910.2	4.5	0.49	4.4	0.48
Canarias	1,776.4	4.8	0.27	16.5	0.94
Cantabria	491.9	-0.6	-0.12	-2.1	-0.42
Castilla y León	2,119.5	-5.3	-0.25	-17.6	-0.82
Castilla-La Mancha	1,697.8	-2.9	-0.17	-6.3	-0.37
Cataluña	5,992.6	-33.4	-0.55	-42.3	-0.70
Comunitat Valenciana	4,175.7	0.8	0.02	7.4	0.18
Extremadura	907.3	-0.2	-0.03	-0.8	-0.09
Galicia	2,364.0	-1.7	-0.07	-12.6	-0.53
Madrid, Comunidad de	5,282.6	-1.6	-0.03	4.6	0.09
Murcia, Región de	1,194.3	-0.4	-0.04	1.6	0.13
Navarra, Comunidad Foral de	512.7	-1.1	-0.22	-1.2	-0.23
País Vasco	1,789.5	-7.4	-0.41	-22.1	-1.22
Rioja, La	259.4	-1.3	-0.49	-1.8	-0.67
Ceuta	60.5	0.0	0.04	0.4	0.60
Melilla	58.4	0.3	0.49	1.7	3.07

2. Active population

TOTAL	23,098.4	-12.0	-0.05	-36.2	-0.16
Andalucía	4,021.3	2.9	0.07	35.6	0.89
Aragón	658.6	2.2	0.34	8.5	1.31
Asturias, Principado de	485.1	1.3	0.26	6.1	1.28
Balears, Illes	629.4	17.6	2.88	13.8	2.24
Canarias	1,124.4	5.8	0.52	12.2	1.09
Cantabria	276.7	0.0	0.00	-4.9	-1.73
Castilla y León	1,186.6	2.4	0.20	-7.2	-0.61
Castilla-La Mancha	988.9	-7.7	-0.77	-11.4	-1.14
Cataluña	3,724.9	-17.5	-0.47	-93.7	-2.45
Comunitat Valenciana	2,498.8	5.9	0.24	2.2	0.09
Extremadura	511.3	19.0	3.85	23.7	4.86
Galicia	1,311.7	2.1	0.16	-1.8	-0.14
Madrid, Comunidad de	3,384.4	-25.7	-0.76	15.6	0.46
Murcia, Región de	748.3	3.6	0.49	10.8	1.47
Navarra, Comunidad Foral de	308.9	-1.7	-0.54	-1.1	-0.37
País Vasco	1,019.0	-18.5	-1.78	-41.8	-3.94
Rioja, La	152.2	-3.5	-2.26	-6.8	-4.30
Ceuta	34.9	-0.1	-0.18	2.7	8.29
Melilla	33.0	-0.2	-0.46	1.4	4.52

* Data below 5000 are subject to strong variations, due to sampling error

Results by Autonomous Communities and Cities

(Conclusion)

	Current quarter	Variation on previous quarter		Variation on same quarter, previous year	
		Difference	Percentage	Difference	Percentage
3. Employed					
TOTAL	17,320.3	-96.9	-0.56	-835.9	-4.60
Andalucía	2,597.0	-58.4	-2.20	-155.7	-5.66
Aragón	535.2	1.1	0.20	-9.9	-1.82
Asturias, Principado de	379.2	-2.9	-0.76	-17.6	-4.44
Balears, Illes	506.8	25.2	5.23	0.9	0.17
Canarias	746.3	-1.6	-0.22	-37.3	-4.77
Cantabria	233.3	4.6	2.02	-8.7	-3.58
Castilla y León	959.5	9.3	0.98	-42.4	-4.23
Castilla-La Mancha	712.3	1.9	0.27	-63.5	-8.18
Cataluña	2,884.5	-36.3	-1.24	-192.1	-6.24
Comunitat Valenciana	1,796.7	-20.6	-1.13	-82.6	-4.39
Extremadura	344.3	16.3	4.97	-28.2	-7.57
Galicia	1,047.7	14.0	1.35	-39.3	-3.62
Madrid, Comunidad de	2,756.2	-10.7	-0.39	-39.5	-1.41
Murcia, Región de	532.7	-16.9	-3.08	-26.4	-4.72
Navarra, Comunidad Foral de	262.7	3.1	1.20	-11.1	-4.06
País Vasco	861.3	-25.1	-2.83	-70.3	-7.55
Rioja, La	121.3	0.9	0.75	-10.1	-7.71
Ceuta	20.6	-0.6	-2.75	-0.9	-4.41
Melilla	23.0	-0.2	-0.82	-1.1	-4.69

4. Unemployed

TOTAL	5,778.1	85.0	1.49	799.7	16.06
Andalucía	1,424.2	61.3	4.50	191.3	15.51
Aragón	123.5	1.1	0.93	18.4	17.50
Asturias, Principado de	105.9	4.2	4.11	23.7	28.85
Balears, Illes	122.6	-7.6	-5.82	12.9	11.79
Canarias	378.2	7.4	2.00	49.5	15.06
Cantabria	43.5	-4.6	-9.59	3.8	9.54
Castilla y León	227.1	-6.9	-2.96	35.1	18.31
Castilla-La Mancha	276.6	-9.6	-3.35	52.1	23.21
Cataluña	840.4	18.8	2.29	98.4	13.26
Comunitat Valenciana	702.1	26.5	3.93	84.7	13.73
Extremadura	167.0	2.6	1.61	51.9	45.08
Galicia	264.0	-11.9	-4.31	37.5	16.53
Madrid, Comunidad de	628.2	-15.1	-2.34	55.2	9.62
Murcia, Región de	215.6	20.6	10.56	37.2	20.87
Navarra, Comunidad Foral de	46.2	-4.8	-9.39	10.0	27.51
País Vasco	157.7	6.6	4.38	28.6	22.12
Rioja, La	30.9	-4.4	-12.52	3.3	11.89
Ceuta	14.3	0.5	3.75	3.6	(:)
Melilla	10.1	0.0	0.35	2.6	(:)

* Data below 5,000 are subject to strong variations, due to sampling error

(:) The variation percentages calculated from low figures with high sampling errors are not significant

Results by Autonomous Communities and Cities

(Absolute figures in thousands and rates in percentage)

5. Employed and unemployed by sex. Activity and unemployment rates

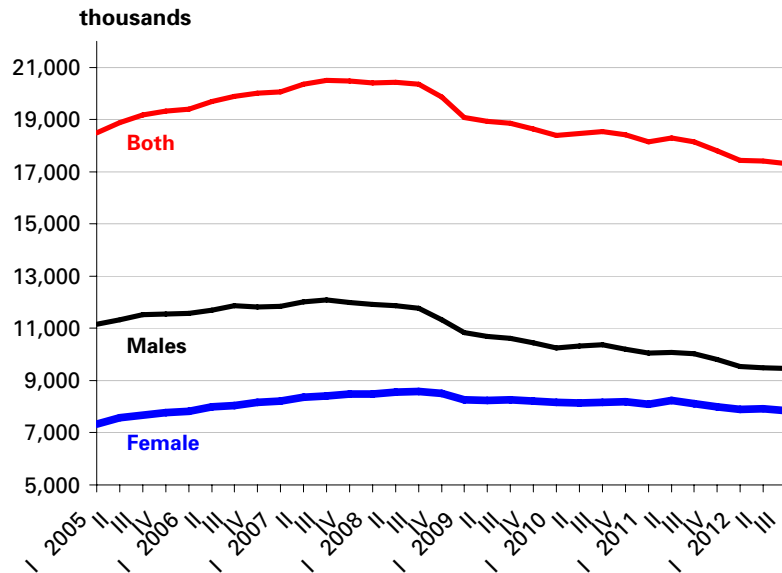
	Both sexes				Males				Females			
	Employed	Unemployed	Activity rate	Unem. rate	Employed	Unemployed	Activity rate	Unem. Rate	Employed	Unemployed	Activity rate	Unem. Rate
TOTAL	17,320.3	5,778.1	60.12	25.02	9,468.5	3,103.3	67.18	24.68	7,851.8	2,674.7	53.41	25.41
Andalucía	2,597.0	1,424.2	59.10	35.42	1,444.0	774.0	66.47	34.90	1,153.0	650.2	52.02	36.06
Aragón	535.2	123.5	59.68	18.75	296.5	64.8	66.50	17.94	238.6	58.7	53.06	19.73
Asturias, Principado de	379.2	105.9	52.72	21.84	201.1	56.4	59.18	21.91	178.0	49.5	46.92	21.75
Baleares, Illes	506.8	122.6	69.14	19.47	275.0	64.3	75.00	18.96	231.8	58.2	63.36	20.08
Canarias	746.3	378.2	63.30	33.63	408.4	202.5	69.56	33.15	337.9	175.6	57.18	34.20
Cantabria	233.3	43.5	56.26	15.71	126.9	25.3	64.05	16.64	106.3	18.2	48.98	14.58
Castilla y León	959.5	227.1	55.98	19.14	555.9	112.1	64.12	16.78	403.5	115.0	48.11	22.17
Castilla-La Mancha	712.3	276.6	58.25	27.97	425.7	144.5	67.05	25.34	286.6	132.1	49.41	31.55
Cataluña	2,884.5	840.4	62.16	22.56	1,539.2	455.2	68.89	22.82	1,345.3	385.2	55.87	22.26
Comunitat Valenciana	1,796.7	702.1	59.84	28.10	1,000.8	386.4	67.51	27.86	795.9	315.7	52.41	28.40
Extremadura	344.3	167.0	56.35	32.66	204.7	87.5	65.30	29.95	139.6	79.5	47.65	36.27
Galicia	1,047.7	264.0	55.49	20.13	554.7	142.1	61.75	20.39	493.0	121.9	49.76	19.83
Madrid, Comunidad de	2,756.2	628.2	64.07	18.56	1,439.1	332.8	70.41	18.78	1,317.1	295.4	58.30	18.32
Murcia, Región de	532.7	215.6	62.66	28.81	298.8	120.7	69.94	28.78	234.0	94.9	55.31	28.85
Navarra, Comunidad Foral de	262.7	46.2	60.26	14.95	143.4	26.0	67.14	15.36	119.4	20.2	53.60	14.46
País Vasco	861.3	157.7	56.94	15.48	458.7	82.4	63.27	15.23	402.5	75.3	51.14	15.76
Rioja, La	121.3	30.9	58.68	20.33	67.9	15.5	65.53	18.61	53.4	15.4	52.09	22.40
Ceuta	20.6	14.3	57.63	41.03	13.9	5.5	63.69	28.34	6.7	8.8	51.50	56.92
Melilla	23.0	10.1	56.54	30.52	14.0	5.0	65.70	26.51	9.0	5.1	47.58	35.94

* Data below 5,000 are subject to strong variations, due to sampling errors

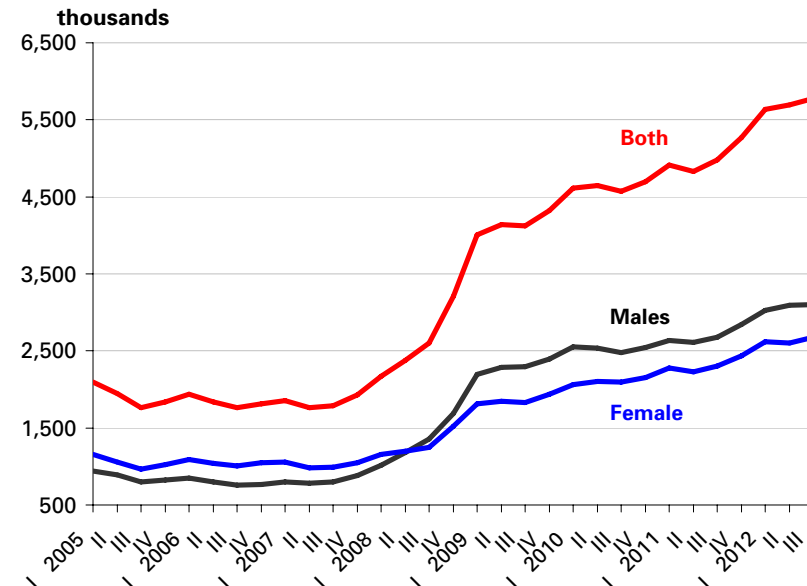
Employed and unemployed by sex

APS Third Quarter 2012

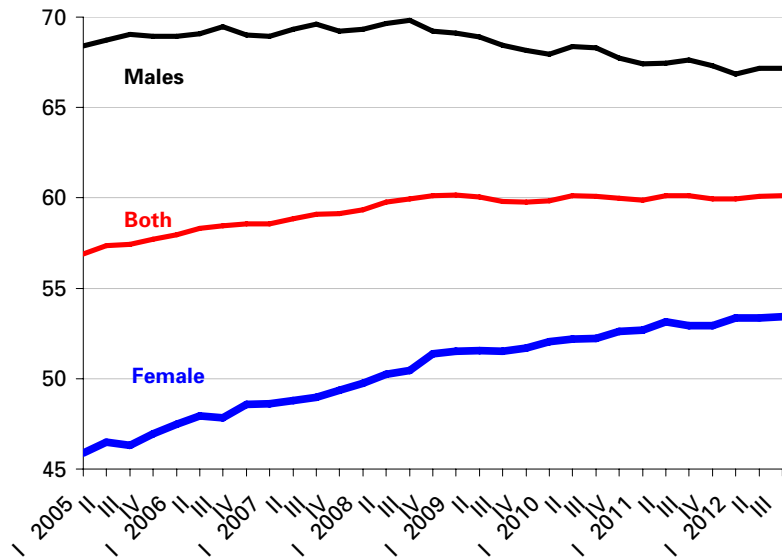
Employment



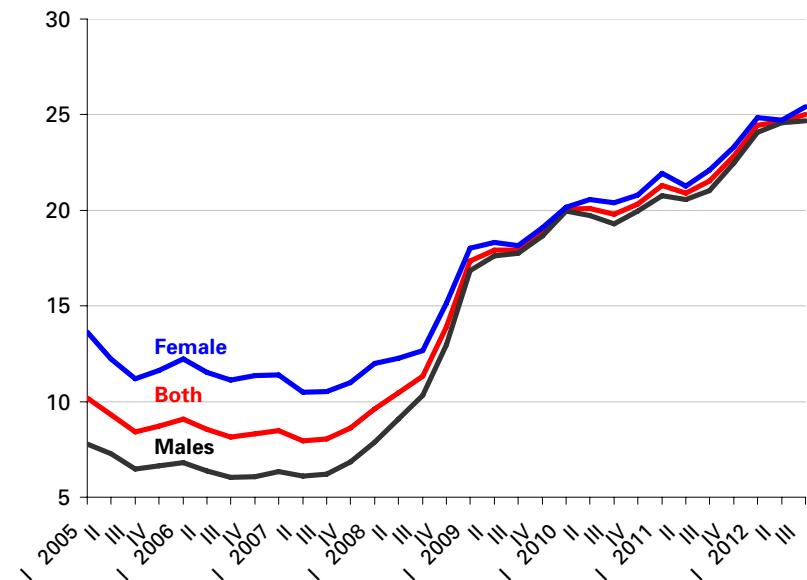
Unemployment



Activity rate



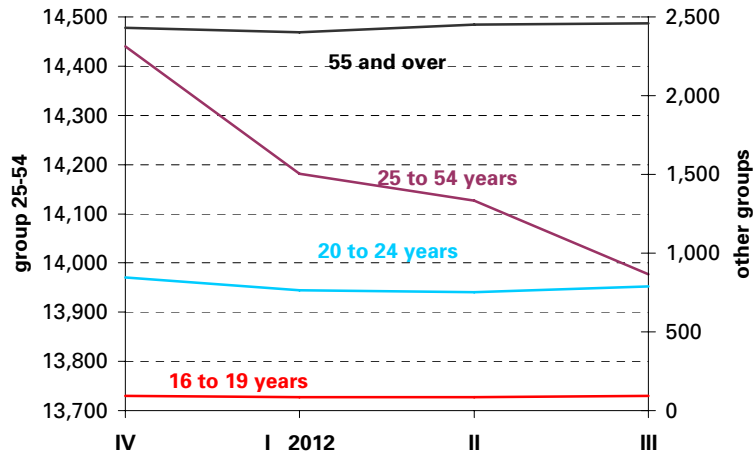
Unemployment rate



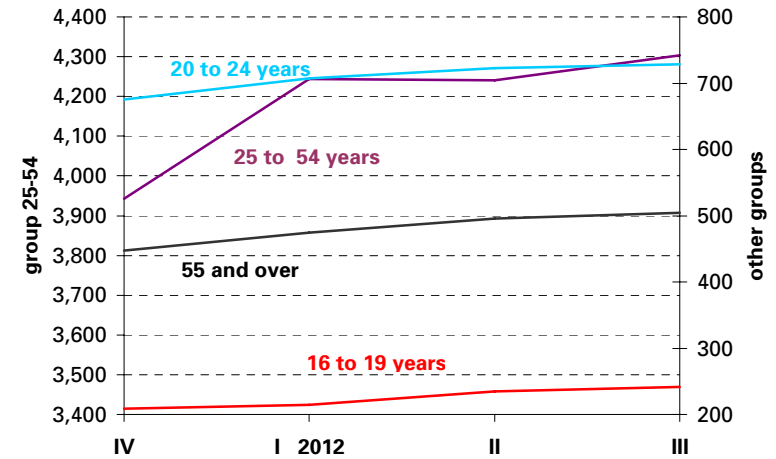
Employed and Unemployed by age

APS Third Quarter 2012

Employment (thousands)

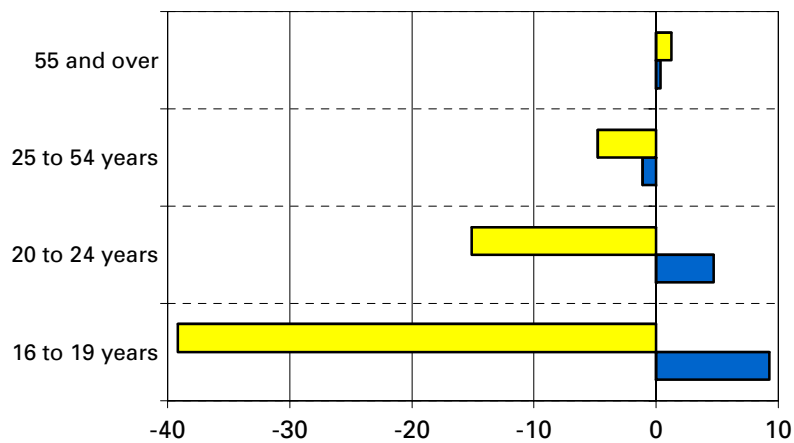


Unemployment (thousands)



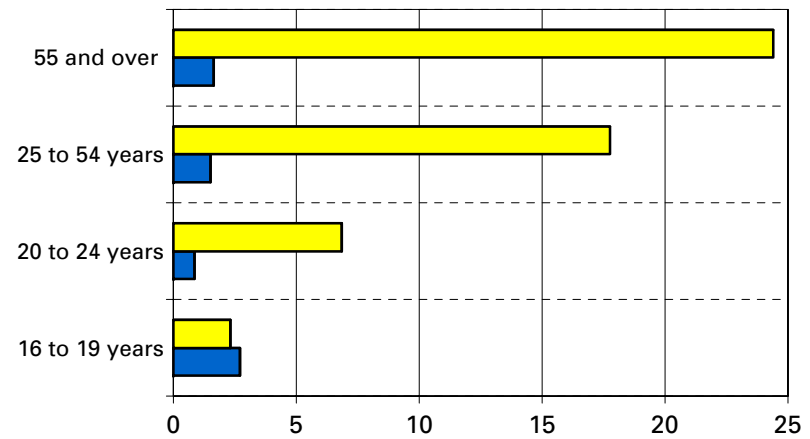
Variation percentages over the previous quarter and over the same quarter of the previous year

Employment



■ previous quarter ■ same quarter, previous year

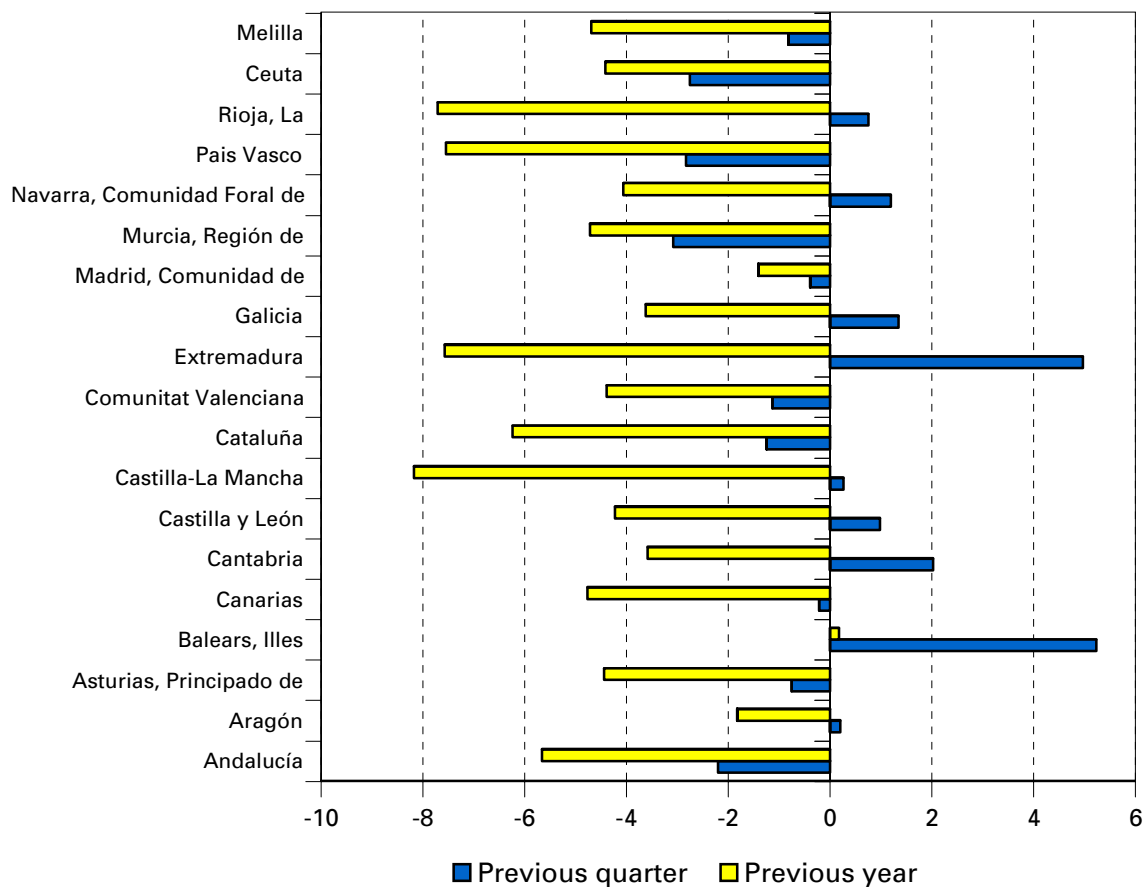
Unemployment



■ previous quarter ■ same quarter, previous year

Employment variation percentages over the previous quarter and over the same quarter of the previous year

Third Quarter 2012



Unemployment rate (Spain = 25.02)

