

Economically Active Population Survey (EAPS)

Third quarter of 2013

Main results

- ∅ Employment in the third quarter of 2013 registers an increase of 39,500 persons, reaching a total of 16,823,200 employed persons. The quarterly employment variation rate stands at 0.24% and the annual rate stands at -2.87%. Employment increases by 52,000 employed persons in the private employment and it decreases by 12,600 in the public employment.
- ∅ The number of self-employed workers increases by 15,200 and that of wage earners by 23,200. The number of employers increases by 20,300. The total number of wage earners with a permanent contract decreases by 146,300, and that of wage earners with a temporary contract increase by 169,500.
- ∅ Employment increases in *Services* (123,900 more). In turn, it decreases in *Agriculture* (55,000 less), in *Industry* (19,700) and in *Construction* (9,700).
- ∅ The Autonomous Communities with the greatest increases in employment, as compared with the previous quarter, are: Cataluña (52,300 more employed persons), Illes Balears (23,900) and Aragón (11,600). The greatest decreases are registered in Andalucía (52,300 less), Comunidad de Madrid (43,800) and País Vasco (17,700).
- ∅ Illes Balears registers the greatest increase in the interannual variation rate for employment (1.58%). In turn, the greatest decreases are registered in Comunidad de Madrid (-5.45%), Comunidad Foral de Navarra (-5.30%) and Cantabria (-5.18%).
- ∅ The number of unemployed persons decreases by 72,800 and reaches the figure of 5,904,700. The unemployment rate decreases 28 hundredths, standing at 25.98%.
- ∅ The greatest decreases in unemployment, as compared with the previous quarter, affect Cataluña (32,500 less unemployed persons), Illes Balears (25,100) and Comunitat Valenciana (22,600). The greatest increases are registered in Canarias (22,000 more unemployed persons) and Comunidad de Madrid (10,900).
- ∅ The number of economically active persons decreases by 33,300, indicating a total of 22,728,000 active persons and an activity rate of 59.59%.
- ∅ The greatest increase in the number of economically active persons is registered in Cataluña (19,700 more) and Canarias (17,900). The greatest decrease is registered in Andalucía (45,400 less employed persons), Comunidad de Madrid (32,900) and País Vasco (16,600).

Economically Active Population Survey Third Quarter 2013

National results

(Continues)

| | Current quarter | Variation on previous quarter | | Variation on same quarter, previous year | |
|----------------------------------------------------------------------|-----------------|-------------------------------|------------|------------------------------------------|------------|
| | | Difference | Percentage | Difference | Percentage |
| 1. Population aged 16 years and over by sex and labour status | | | | | |
| BOTH SEXES | | | | | |
| Population aged 16 years and over | 38,141.1 | -85.2 | -0.22 | -279.2 | -0.73 |
| Active population | 22,728.0 | -33.3 | -0.15 | -370.4 | -1.60 |
| - Employed | 16,823.2 | 39.5 | 0.24 | -497.1 | -2.87 |
| - Unemployed | 5,904.7 | -72.8 | -1.22 | 126.7 | 2.19 |
| Inactive | 15,413.1 | -51.9 | -0.34 | 91.2 | 0.60 |
| Activity rate | 59.59 | 0.05 | - | -0.53 | - |
| Unemployment rate | 25.98 | -0.28 | - | 0.97 | - |
| Population aged 16 to 64 years | 30,050.9 | -118.4 | -0.39 | -406.3 | -1.33 |
| Activity rate (16-64) | 75.14 | 0.20 | - | -0.14 | - |
| Unemployment rate (16-64) | 26.11 | -0.30 | - | 0.94 | - |
| Employment rate (16-64) | 55.53 | 0.38 | - | -0.81 | - |
| MALES | | | | | |
| Population aged 16 years and over | 18,529.4 | -55.0 | -0.30 | -183.0 | -0.98 |
| Active population | 12,307.9 | 20.5 | 0.17 | -263.9 | -2.10 |
| - Employed | 9,169.2 | 24.7 | 0.27 | -299.3 | -3.16 |
| - Unemployed | 3,138.7 | -4.1 | -0.13 | 35.4 | 1.14 |
| Inactive | 6,221.5 | -75.6 | -1.20 | 80.9 | 1.32 |
| Activity rate | 66.42 | 0.31 | - | -0.76 | - |
| Unemployment rate | 25.50 | -0.08 | - | 0.82 | - |
| Population aged 16 to 64 years | 15,044.5 | -70.4 | -0.47 | -244.0 | -1.60 |
| Activity rate (16-64) | 81.25 | 0.52 | - | -0.36 | - |
| Unemployment rate (16-64) | 25.63 | -0.09 | - | 0.79 | - |
| Employment rate (16-64) | 60.43 | 0.46 | - | -0.91 | - |
| FEMALES | | | | | |
| Population aged 16 years and over | 19,611.7 | -30.2 | -0.15 | -96.2 | -0.49 |
| Active population | 10,420.1 | -53.9 | -0.51 | -106.5 | -1.01 |
| - Employed | 7,654.0 | 14.8 | 0.19 | -197.8 | -2.52 |
| - Unemployed | 2,766.0 | -68.7 | -2.42 | 91.3 | 3.41 |
| Inactive | 9,191.6 | 23.7 | 0.26 | 10.3 | 0.11 |
| Activity rate | 53.13 | -0.19 | - | -0.28 | - |
| Unemployment rate | 26.55 | -0.52 | - | 1.14 | - |
| Population aged 16 to 64 years | 15,006.4 | -48.0 | -0.32 | -162.2 | -1.07 |
| Activity rate (16-64) | 69.02 | -0.11 | - | 0.12 | - |
| Unemployment rate (16-64) | 26.67 | -0.55 | - | 1.11 | - |
| Employment rate (16-64) | 50.61 | 0.30 | - | -0.68 | - |

2. Spanish population⁽¹⁾ aged 16 years and over by labour status

| | | | | | |
|--------------------------------------------------|----------|-------|-------|--------|-------|
| SPANISH POPULATION AGED 16 YEARS AND OVER | 33,815.4 | -15.4 | -0.05 | -59.6 | -0.18 |
| Active population | 19,527.8 | 5.2 | 0.03 | -176.7 | -0.90 |
| - Employed | 14,801.5 | 99.5 | 0.68 | -307.4 | -2.03 |
| - Unemployed | 4,726.3 | -94.2 | -1.96 | 130.6 | 2.84 |
| Inactive | 14,287.6 | -20.6 | -0.14 | 117.1 | 0.83 |
| Activity rate | 57.75 | 0.04 | - | -0.42 | - |
| Unemployment rate | 24.20 | -0.49 | - | 0.88 | - |

⁽¹⁾ including dual nationality

National results

(Continuation)

| | Current quarter | Variation on previous quarter | | Variation on same quarter, previous year | |
|----------------------------------------------------------------------|-----------------|-------------------------------|------------|------------------------------------------|------------|
| | | Difference | Percentage | Difference | Percentage |
| 3. Foreign population aged 16 years and over by labour status | | | | | |
| FOREIGN POPULATION AGED 16 YEARS AND OVER | 4,325.7 | -69.9 | -1.59 | -219.6 | -4.83 |
| Active population | 3,200.2 | -38.6 | -1.19 | -193.7 | -5.71 |
| - Employed | 2,021.8 | -60.0 | -2.88 | -189.7 | -8.58 |
| - Unemployed | 1,178.4 | 21.4 | 1.85 | -4.0 | -0.34 |
| Inactive | 1,125.5 | -31.3 | -2.71 | -25.9 | -2.25 |
| Activity rate | 73.98 | 0.30 | - | -0.69 | - |
| Unemployment rate | 36.82 | 1.10 | - | 1.98 | - |

4. Employed by sex, age group and economic sector

| | | | | | |
|----------------|----------|-------|-------|--------|--------|
| BOTH SEXES | 16,823.2 | 39.5 | 0.24 | -497.1 | -2.87 |
| 16 to 19 years | 87.5 | 13.0 | 17.40 | -6.3 | -6.70 |
| 20 to 24 years | 703.5 | 48.9 | 7.48 | -86.0 | -10.90 |
| 25 to 29 years | 1,611.2 | 37.1 | 2.36 | -110.5 | -6.42 |
| 30 to 34 years | 2,303.7 | -54.3 | -2.30 | -174.4 | -7.04 |
| 35 to 39 years | 2,716.1 | -12.1 | -0.44 | -83.0 | -2.97 |
| 40 to 44 years | 2,564.8 | -4.1 | -0.16 | -9.0 | -0.35 |
| 45 to 49 years | 2,351.0 | -4.2 | -0.18 | -22.2 | -0.93 |
| 50 to 54 years | 2,043.1 | -10.5 | -0.51 | 12.4 | 0.61 |
| 55 and over | 2,442.4 | 25.6 | 1.06 | -18.1 | -0.74 |
| MALES | 9,169.2 | 24.7 | 0.27 | -299.3 | -3.16 |
| 16 to 19 years | 50.0 | -0.8 | -1.66 | -3.9 | -7.20 |
| 20 to 24 years | 374.3 | 32.8 | 9.60 | -36.9 | -8.98 |
| 25 to 29 years | 811.9 | 3.2 | 0.40 | -58.6 | -6.74 |
| 30 to 34 years | 1,219.7 | -23.0 | -1.85 | -101.0 | -7.65 |
| 35 to 39 years | 1,491.5 | -6.6 | -0.44 | -44.3 | -2.89 |
| 40 to 44 years | 1,405.6 | -2.5 | -0.18 | -18.6 | -1.31 |
| 45 to 49 years | 1,286.8 | 4.3 | 0.33 | -23.2 | -1.77 |
| 50 to 54 years | 1,135.1 | -1.2 | -0.10 | 7.1 | 0.63 |
| 55 and over | 1,394.3 | 18.6 | 1.35 | -19.8 | -1.40 |
| FEMALES | 7,654.0 | 14.8 | 0.19 | -197.8 | -2.52 |
| 16 to 19 years | 37.6 | 13.8 | 58.20 | -2.4 | -6.04 |
| 20 to 24 years | 329.2 | 16.2 | 5.16 | -49.1 | -12.98 |
| 25 to 29 years | 799.3 | 33.9 | 4.44 | -51.9 | -6.09 |
| 30 to 34 years | 1,084.0 | -31.4 | -2.81 | -73.4 | -6.35 |
| 35 to 39 years | 1,224.6 | -5.4 | -0.44 | -38.7 | -3.06 |
| 40 to 44 years | 1,159.2 | -1.5 | -0.13 | 9.6 | 0.84 |
| 45 to 49 years | 1,064.2 | -8.5 | -0.79 | 1.1 | 0.10 |
| 50 to 54 years | 907.9 | -9.3 | -1.02 | 5.3 | 0.59 |
| 55 and over | 1,048.1 | 7.0 | 0.67 | 1.7 | 0.17 |
| TOTAL EMPLOYED | 16,823.2 | 39.5 | 0.24 | -497.1 | -2.87 |
| Agriculture | 705.6 | -55.0 | -7.23 | -14.7 | -2.04 |
| Industry | 2,280.2 | -19.7 | -0.85 | -161.7 | -6.62 |
| Construction | 1,013.5 | -9.7 | -0.95 | -123.2 | -10.84 |
| Services | 12,823.8 | 123.9 | 0.98 | -197.4 | -1.52 |

National results

(Continuation)

| | Current quarter | Variation on previous quarter | | Variation on same quarter, previous year | |
|---------------------------------------------------------------------------------------------------------|-----------------|-------------------------------|------------|------------------------------------------|------------|
| | | Difference | Percentage | Difference | Percentage |
| 5. Employed by professional status, type of contract, public / private sectors and working hours | | | | | |
| TOTAL EMPLOYED | 16,823.2 | 39.5 | 0.24 | -497.1 | -2.87 |
| BY PROFESSIONAL STATUS | | | | | |
| Self-employed workers | 3,064.6 | 15.2 | 0.50 | -12.8 | -0.42 |
| - Employers | 885.5 | 20.3 | 2.34 | -48.4 | -5.19 |
| - Independent workers | 2,042.0 | 4.5 | 0.22 | 55.3 | 2.78 |
| - Cooperatives members | 25.3 | 5.2 | 25.56 | 1.1 | 4.71 |
| - Family workers | 111.8 | -14.7 | -11.63 | -20.8 | -15.68 |
| Employees | 13,747.7 | 23.2 | 0.17 | -485.5 | -3.41 |
| - With a permanent job | 10,405.2 | -146.3 | -1.39 | -406.2 | -3.76 |
| - With a temporary job | 3,342.5 | 169.5 | 5.34 | -79.3 | -2.32 |
| Others | 11.0 | 1.1 | 11.67 | 1.2 | 11.95 |
| BY PUBLIC / PRIVATE SECTORS | | | | | |
| Employed by public sector | 2,830.6 | -12.6 | -0.44 | -161.1 | -5.38 |
| Employed by private sector | 13,992.6 | 52.0 | 0.37 | -336.0 | -2.34 |
| BY WORKING HOURS | | | | | |
| Full-time employed | 14,237.2 | 207.7 | 1.48 | -594.6 | -4.01 |
| Males | 8,457.6 | 71.7 | 0.85 | -372.5 | -4.22 |
| Females | 5,779.7 | 136.0 | 2.41 | -222.0 | -3.70 |
| Part-time employed | 2,586.0 | -168.2 | -6.11 | 97.5 | 3.92 |
| Males | 711.6 | -47.0 | -6.20 | 73.2 | 11.47 |
| Females | 1,874.4 | -121.2 | -6.07 | 24.2 | 1.31 |

*) Private employment are all persons in employment other than public employees. Namely: private employees, employers, independent workers, cooperative members, family workers and other professional status.

6. Unemployed by sex, age group, and economic sector

| | | | | | |
|-------------------------------------|---------|--------|--------|-------|--------|
| BOTH SEXES | 5,904.7 | -72.8 | -1.22 | 126.7 | 2.19 |
| 16 to 19 years | 234.6 | 30.7 | 15.06 | -7.0 | -2.89 |
| 20 to 24 years | 708.5 | -20.9 | -2.86 | -20.1 | -2.75 |
| 25 to 54 years | 4,386.0 | -90.9 | -2.03 | 82.0 | 1.91 |
| 55 and over | 575.5 | 8.2 | 1.45 | 71.7 | 14.22 |
| MALES | 3,138.7 | -4.1 | -0.13 | 35.4 | 1.14 |
| 16 to 19 years | 125.7 | 13.7 | 12.19 | -7.5 | -5.65 |
| 20 to 24 years | 375.1 | -18.4 | -4.67 | -14.7 | -3.78 |
| 25 to 54 years | 2,300.1 | -10.6 | -0.46 | 9.0 | 0.39 |
| 55 and over | 337.8 | 11.2 | 3.44 | 48.6 | 16.82 |
| FEMALES | 2,766.0 | -68.7 | -2.42 | 91.3 | 3.41 |
| 16 to 19 years | 108.9 | 17.0 | 18.55 | 0.5 | 0.51 |
| 20 to 24 years | 333.5 | -2.5 | -0.73 | -5.3 | -1.58 |
| 25 to 54 years | 2,085.9 | -80.3 | -3.71 | 73.0 | 3.63 |
| 55 and over | 237.7 | -3.0 | -1.25 | 23.0 | 10.72 |
| TOTAL UNEMPLOYED | 5,904.7 | -72.8 | -1.22 | 126.7 | 2.19 |
| Agriculture | 288.2 | 16.1 | 5.92 | -10.2 | -3.43 |
| Industry | 251.7 | -28.4 | -10.15 | -57.4 | -18.58 |
| Construction | 322.8 | -28.6 | -8.14 | -83.0 | -20.46 |
| Services | 1,548.4 | -117.5 | -7.06 | -89.0 | -5.44 |
| Lost their job more than 1 year ago | 2,898.9 | 1.3 | 0.05 | 322.8 | 12.53 |

EAPE - (ANNEXE TO THE TABLES) Third Quarter 2013 (3/7)

National results

(Conclusion)

| | Current quarter | Variation on previous quarter | | Variation on same quarter, previous year | |
|--|-----------------|-------------------------------|------------|------------------------------------------|------------|
| | | Difference | Percentage | Difference | Percentage |

7. Unemployment rate by relationship with the reference person

| | | | | | |
|-------------------|-------|-------|---|-------|---|
| TOTAL | 25.98 | -0.28 | - | 0.97 | - |
| Reference person | 21.39 | -0.43 | - | 1.00 | - |
| Spouse or partner | 21.64 | -0.14 | - | 0.75 | - |
| Child | 42.88 | -0.49 | - | 1.25 | - |
| Other relatives | 35.96 | -1.43 | - | 2.49 | - |
| Unrelated persons | 22.66 | -2.08 | - | -2.50 | - |

8. Household data

| | | | | | |
|--------------------------------------------|----------|-------|-------|--------|-------|
| TOTAL HOUSEHOLDS | 17,391.9 | -48.8 | -0.28 | -79.8 | -0.46 |
| Households with at least one active member | 12,842.0 | -60.9 | -0.47 | -162.9 | -1.25 |
| - All member employed | 8,293.1 | 26.7 | 0.32 | -228.5 | -2.68 |
| - All member unemployed | 1,807.7 | -13.4 | -0.74 | 69.8 | 4.02 |
| Households without any active population | 4,550.0 | 12.0 | 0.27 | 83.2 | 1.86 |

Mobility according to activity in current and previous quarter

| Classification in previous quarter | Total | Classification in current quarter | | |
|------------------------------------|--------|-----------------------------------|------------|----------|
| | | Employed | Unemployed | Inactive |
| BOTH SEXES | | | | |
| Total | 100.00 | 100.00 | 100.00 | 100.00 |
| Employed | 44.20 | 92.01 | 13.18 | 3.17 |
| Unemployed | 15.01 | 5.71 | 69.96 | 5.12 |
| Inactive | 40.78 | 2.28 | 16.86 | 91.71 |
| MALES | | | | |
| Total | 100.00 | 100.00 | 100.00 | 100.00 |
| Employed | 49.85 | 92.53 | 13.69 | 3.06 |
| Unemployed | 16.22 | 5.82 | 73.18 | 4.47 |
| Inactive | 33.93 | 1.65 | 13.13 | 92.47 |
| FEMALES | | | | |
| Total | 100.00 | 100.00 | 100.00 | 100.00 |
| Employed | 38.91 | 91.39 | 12.63 | 3.24 |
| Unemployed | 13.89 | 5.58 | 66.41 | 5.55 |
| Inactive | 47.21 | 3.04 | 20.96 | 91.21 |

Grossing up factors of current quarter (forward analysis)

Results by Autonomous Communities and Cities (Continues)

| | Current quarter | Variation on previous quarter | | Variation on same quarter, previous year | |
|---------------------------------------------|-----------------|-------------------------------|------------|------------------------------------------|------------|
| | | Difference | Percentage | Difference | Percentage |
| | | | | | |
| 1. Population aged 16 years and over | | | | | |
| TOTAL | 38,141.1 | -85.2 | -0.22 | -279.2 | -0.73 |
| Andalucía | 6,797.6 | -1.4 | -0.02 | -6.1 | -0.09 |
| Aragón | 1,095.3 | -2.0 | -0.18 | -8.4 | -0.76 |
| Asturias, Principado de | 910.6 | -1.9 | -0.21 | -9.6 | -1.05 |
| Balears, Illes | 922.4 | 5.4 | 0.59 | 12.2 | 1.34 |
| Canarias | 1,792.4 | 4.1 | 0.23 | 15.9 | 0.90 |
| Cantabria | 488.1 | -0.5 | -0.11 | -3.8 | -0.77 |
| Castilla y León | 2,097.8 | -4.7 | -0.22 | -21.7 | -1.02 |
| Castilla-La Mancha | 1,679.6 | -3.8 | -0.23 | -18.1 | -1.07 |
| Cataluña | 5,916.6 | -35.7 | -0.60 | -76.0 | -1.27 |
| Comunitat Valenciana | 4,148.3 | -8.6 | -0.21 | -27.3 | -0.65 |
| Extremadura | 905.1 | -0.2 | -0.03 | -2.2 | -0.24 |
| Galicia | 2,347.5 | -3.8 | -0.16 | -16.5 | -0.70 |
| Madrid, Comunidad de | 5,199.8 | -24.3 | -0.47 | -82.8 | -1.57 |
| Murcia, Región de | 1,189.4 | 1.0 | 0.08 | -4.9 | -0.41 |
| Navarra, Comunidad Foral de | 508.6 | -1.0 | -0.19 | -4.1 | -0.79 |
| País Vasco | 1,767.3 | -6.5 | -0.36 | -22.2 | -1.24 |
| Rioja, La | 255.5 | -1.3 | -0.51 | -3.9 | -1.49 |
| Ceuta | 60.4 | 0.0 | -0.02 | -0.1 | -0.18 |
| Melilla | 58.7 | 0.0 | -0.08 | 0.3 | 0.48 |

2. Active population

| | | | | | |
|-----------------------------|----------|-------|-------|--------|-------|
| TOTAL | 22,728.0 | -33.3 | -0.15 | -370.4 | -1.60 |
| Andalucía | 3,979.6 | -45.4 | -1.13 | -41.7 | -1.04 |
| Aragón | 641.6 | 3.1 | 0.49 | -17.0 | -2.59 |
| Asturias, Principado de | 479.1 | 7.4 | 1.58 | -6.0 | -1.23 |
| Balears, Illes | 620.4 | -1.2 | -0.19 | -9.0 | -1.43 |
| Canarias | 1,120.0 | 17.9 | 1.62 | -4.5 | -0.40 |
| Cantabria | 273.2 | 2.4 | 0.90 | -3.6 | -1.29 |
| Castilla y León | 1,154.9 | 3.4 | 0.30 | -31.7 | -2.67 |
| Castilla-La Mancha | 991.5 | 1.2 | 0.12 | 2.6 | 0.26 |
| Cataluña | 3,680.2 | 19.7 | 0.54 | -44.7 | -1.20 |
| Comunitat Valenciana | 2,479.1 | -11.6 | -0.46 | -19.7 | -0.79 |
| Extremadura | 512.4 | 2.9 | 0.57 | 1.1 | 0.21 |
| Galicia | 1,283.2 | -3.4 | -0.27 | -28.4 | -2.17 |
| Madrid, Comunidad de | 3,259.6 | -32.9 | -1.00 | -124.8 | -3.69 |
| Murcia, Región de | 742.8 | 11.9 | 1.62 | -5.5 | -0.74 |
| Navarra, Comunidad Foral de | 304.3 | 1.9 | 0.64 | -4.7 | -1.51 |
| País Vasco | 985.1 | -16.6 | -1.65 | -33.8 | -3.32 |
| Rioja, La | 151.5 | 3.9 | 2.67 | -0.8 | -0.50 |
| Ceuta | 34.1 | -0.6 | -1.78 | -0.7 | -2.14 |
| Melilla | 35.4 | 2.5 | 7.48 | 2.4 | 7.20 |

* Data below 5000 are subject to strong variations, due to sampling error

Results by Autonomous Communities and Cities (Conclusion)

| | Current quarter | Variation on previous quarter | | Variation on same quarter, previous year | |
|-----------------------------|-----------------|-------------------------------|------------|------------------------------------------|------------|
| | | Difference | Percentage | Difference | Percentage |
| 3. Employed | | | | | |
| TOTAL | 16,823.2 | 39.5 | 0.24 | -497.1 | -2.87 |
| Andalucía | 2,532.3 | -52.3 | -2.02 | -64.7 | -2.49 |
| Aragón | 510.2 | 11.6 | 2.33 | -25.0 | -4.67 |
| Asturias, Principado de | 363.3 | 6.7 | 1.87 | -15.9 | -4.19 |
| Baleares, Illes | 514.8 | 23.9 | 4.88 | 8.0 | 1.58 |
| Canarias | 726.6 | -4.1 | -0.57 | -19.7 | -2.63 |
| Cantabria | 221.2 | 11.0 | 5.21 | -12.1 | -5.18 |
| Castilla y León | 913.1 | 6.5 | 0.71 | -46.4 | -4.84 |
| Castilla-La Mancha | 699.2 | 8.8 | 1.27 | -13.1 | -1.84 |
| Cataluña | 2,839.7 | 52.3 | 1.87 | -44.8 | -1.55 |
| Comunitat Valenciana | 1,777.8 | 11.0 | 0.62 | -18.9 | -1.05 |
| Extremadura | 342.1 | 4.3 | 1.26 | -2.2 | -0.65 |
| Galicia | 1,006.2 | 7.7 | 0.77 | -41.5 | -3.96 |
| Madrid, Comunidad de | 2,606.0 | -43.8 | -1.65 | -150.1 | -5.45 |
| Murcia, Región de | 527.3 | 9.4 | 1.81 | -5.4 | -1.01 |
| Navarra, Comunidad Foral de | 248.8 | 1.9 | 0.75 | -13.9 | -5.30 |
| País Vasco | 829.1 | -17.7 | -2.09 | -32.1 | -3.73 |
| Rioja, La | 121.4 | 4.5 | 3.84 | 0.2 | 0.14 |
| Ceuta | 23.3 | 0.7 | 2.92 | 2.7 | 13.09 |
| Melilla | 20.8 | -2.7 | -11.32 | -2.1 | -9.27 |

4. Unemployed

| | | | | | |
|-----------------------------|---------|-------|--------|-------|--------|
| TOTAL | 5,904.7 | -72.8 | -1.22 | 126.7 | 2.19 |
| Andalucía | 1,447.3 | 6.9 | 0.48 | 23.1 | 1.62 |
| Aragón | 131.4 | -8.5 | -6.09 | 7.9 | 6.42 |
| Asturias, Principado de | 115.9 | 0.8 | 0.66 | 9.9 | 9.35 |
| Baleares, Illes | 105.6 | -25.1 | -19.23 | -17.0 | -13.87 |
| Canarias | 393.4 | 22.0 | 5.93 | 15.2 | 4.02 |
| Cantabria | 52.0 | -8.5 | -14.08 | 8.5 | 19.56 |
| Castilla y León | 241.8 | -3.1 | -1.25 | 14.7 | 6.48 |
| Castilla-La Mancha | 292.3 | -7.6 | -2.54 | 15.7 | 5.68 |
| Cataluña | 840.5 | -32.5 | -3.72 | 0.1 | 0.01 |
| Comunitat Valenciana | 701.3 | -22.6 | -3.12 | -0.8 | -0.11 |
| Extremadura | 170.3 | -1.3 | -0.78 | 3.3 | 1.98 |
| Galicia | 277.1 | -11.1 | -3.85 | 13.1 | 4.95 |
| Madrid, Comunidad de | 653.6 | 10.9 | 1.70 | 25.4 | 4.04 |
| Murcia, Región de | 215.5 | 2.5 | 1.18 | -0.1 | -0.07 |
| Navarra, Comunidad Foral de | 55.5 | 0.1 | 0.13 | 9.3 | 20.06 |
| País Vasco | 156.0 | 1.1 | 0.73 | -1.7 | -1.07 |
| Rioja, La | 30.0 | -0.6 | -1.84 | -0.9 | -3.00 |
| Ceuta | 10.9 | -1.3 | -10.53 | -3.4 | (:) |
| Melilla | 14.6 | 5.1 | 54.08 | 4.5 | (:) |

* Data below 5,000 are subject to strong variations, due to sampling error

(:) The variation percentages calculated from low figures with high sampling errors are not significant

Results by Autonomous Communities and Cities

(Absolute figures in thousands and rates in percentage)

5. Employed and unemployed by sex. Activity and unemployment rates

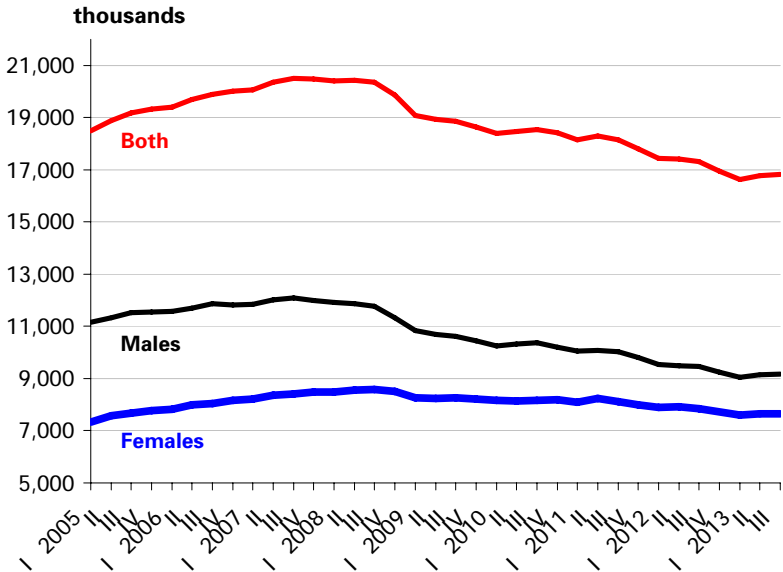
| | Both sexes | | | | Males | | | | Females | | | |
|---------------------------------|------------|------------|---------------|------------|----------|------------|---------------|------------|----------|------------|---------------|------------|
| | Employed | Unemployed | Activity rate | Unem. rate | Employed | Unemployed | Activity rate | Unem. Rate | Employed | Unemployed | Activity rate | Unem. Rate |
| TOTAL | 16,823.2 | 5,904.7 | 59.59 | 25.98 | 9,169.2 | 3,138.7 | 66.42 | 25.50 | 7,654.0 | 2,766.0 | 53.13 | 26.55 |
| Andalucía | 2,532.3 | 1,447.3 | 58.54 | 36.37 | 1,431.1 | 770.7 | 66.13 | 35.00 | 1,101.2 | 676.6 | 51.26 | 38.06 |
| Aragón | 510.2 | 131.4 | 58.58 | 20.48 | 282.4 | 67.7 | 65.03 | 19.33 | 227.8 | 63.7 | 52.34 | 21.86 |
| Asturias, Principado de | 363.3 | 115.9 | 52.62 | 24.18 | 192.4 | 59.4 | 58.54 | 23.58 | 170.9 | 56.5 | 47.32 | 24.84 |
| Balears, Illes | 514.8 | 105.6 | 67.25 | 17.02 | 276.6 | 58.8 | 73.27 | 17.53 | 238.2 | 46.8 | 61.32 | 16.41 |
| Canarias | 726.6 | 393.4 | 62.49 | 35.12 | 389.1 | 219.1 | 68.72 | 36.02 | 337.5 | 174.2 | 56.40 | 34.05 |
| Cantabria | 221.2 | 52.0 | 55.97 | 19.03 | 118.9 | 28.7 | 62.61 | 19.47 | 102.3 | 23.2 | 49.76 | 18.52 |
| Castilla y León | 913.1 | 241.8 | 55.05 | 20.94 | 519.6 | 119.6 | 62.03 | 18.71 | 393.5 | 122.3 | 48.32 | 23.71 |
| Castilla-La Mancha | 699.2 | 292.3 | 59.03 | 29.48 | 412.2 | 154.1 | 67.45 | 27.21 | 287.0 | 138.2 | 50.62 | 32.51 |
| Cataluña | 2,839.7 | 840.5 | 62.20 | 22.84 | 1,481.3 | 453.2 | 68.07 | 23.43 | 1,358.4 | 387.3 | 56.77 | 22.18 |
| Comunitat Valenciana | 1,777.8 | 701.3 | 59.76 | 28.29 | 980.8 | 379.0 | 66.79 | 27.87 | 797.0 | 322.3 | 52.99 | 28.79 |
| Extremadura | 342.1 | 170.3 | 56.61 | 33.24 | 194.3 | 90.2 | 63.73 | 31.71 | 147.7 | 80.1 | 49.68 | 35.14 |
| Galicia | 1,006.2 | 277.1 | 54.66 | 21.59 | 532.6 | 148.4 | 60.80 | 21.80 | 473.6 | 128.6 | 49.07 | 21.36 |
| Madrid, Comunidad de | 2,606.0 | 653.6 | 62.69 | 20.05 | 1,378.8 | 332.1 | 69.28 | 19.41 | 1,227.3 | 321.4 | 56.72 | 20.76 |
| Murcia, Región de | 527.3 | 215.5 | 62.45 | 29.01 | 303.2 | 120.7 | 71.22 | 28.47 | 224.2 | 94.8 | 53.67 | 29.72 |
| Navarra, Comunidad Foral | 248.8 | 55.5 | 59.83 | 18.23 | 138.8 | 29.3 | 67.36 | 17.43 | 110.0 | 26.2 | 52.57 | 19.22 |
| País Vasco | 829.1 | 156.0 | 55.74 | 15.84 | 444.4 | 78.3 | 62.18 | 14.98 | 384.8 | 77.7 | 49.90 | 16.81 |
| Rioja, La | 121.4 | 30.0 | 59.27 | 19.82 | 65.5 | 15.9 | 65.26 | 19.51 | 56.0 | 14.1 | 53.57 | 20.17 |
| Ceuta | 23.3 | 10.9 | 56.50 | 31.85 | 15.2 | 4.8 | 66.73 | 24.12 | 8.0 | 6.0 | 46.37 | 42.86 |
| Melilla | 20.8 | 14.6 | 60.32 | 41.20 | 12.2 | 8.7 | 72.03 | 41.65 | 8.6 | 5.9 | 48.89 | 40.55 |

* Data below 5,000 are subject to strong variations, due to sampling errors

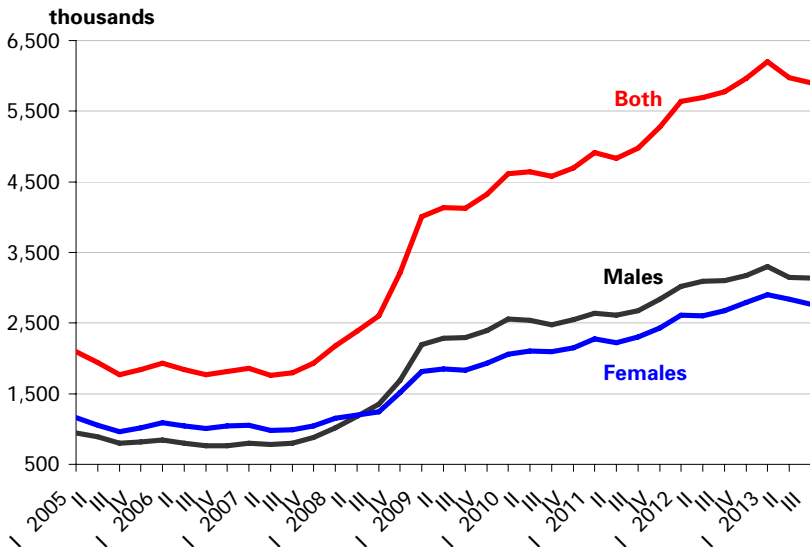
Employed and unemployed by sex

APS Third Quarter 2013

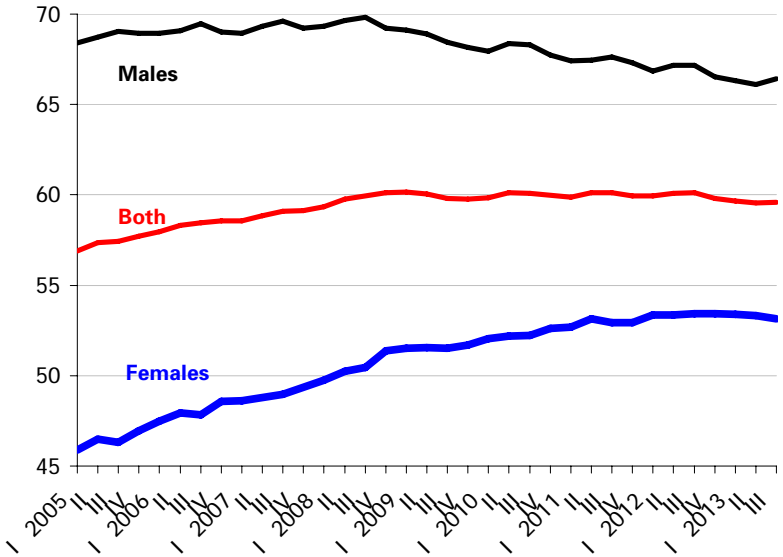
Employment



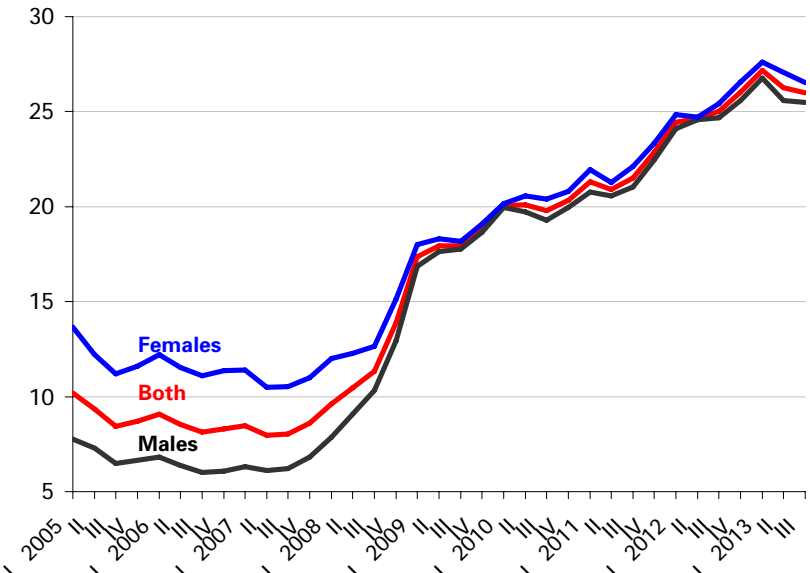
Unemployment



Activity rate



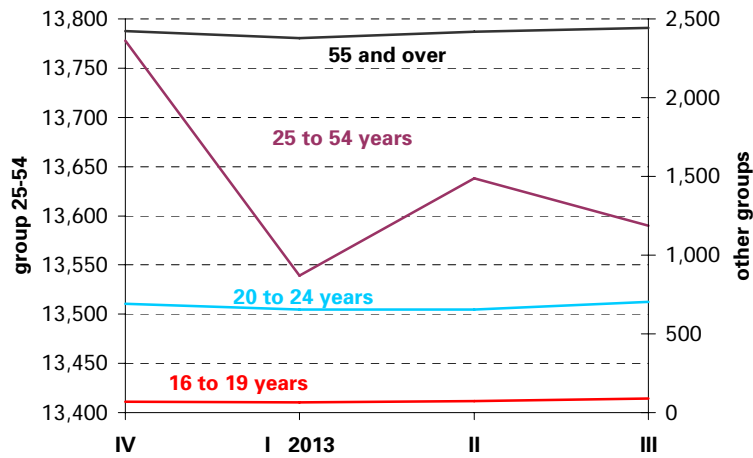
Unemployment rate



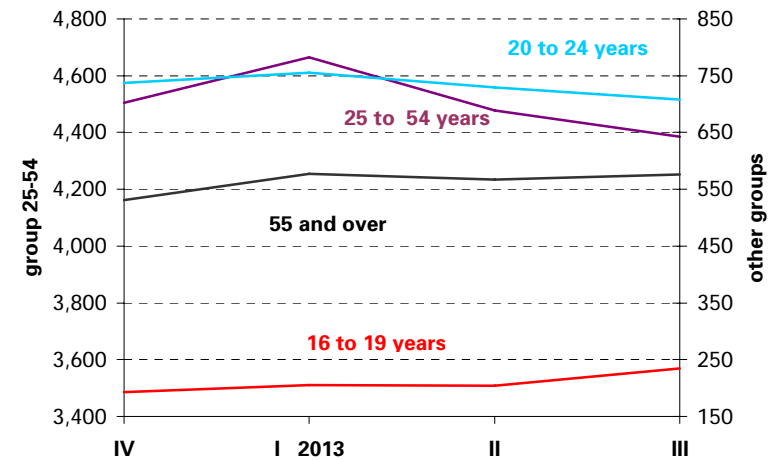
Employed and Unemployed by age

APS Third Quarter 2013

Employment (thousands)

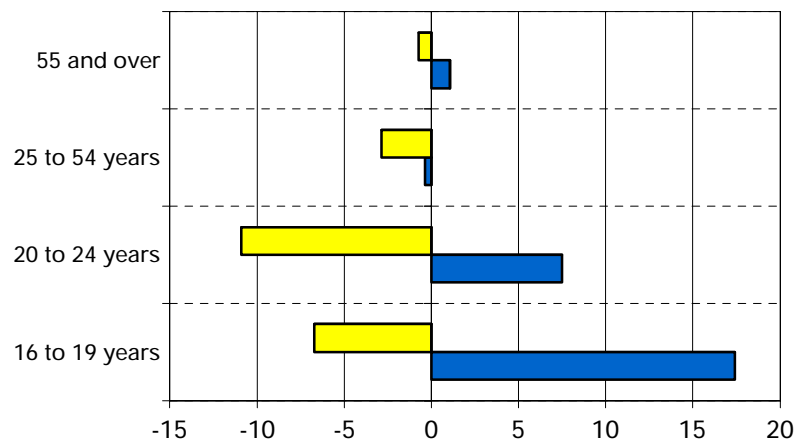


Unemployment (thousands)



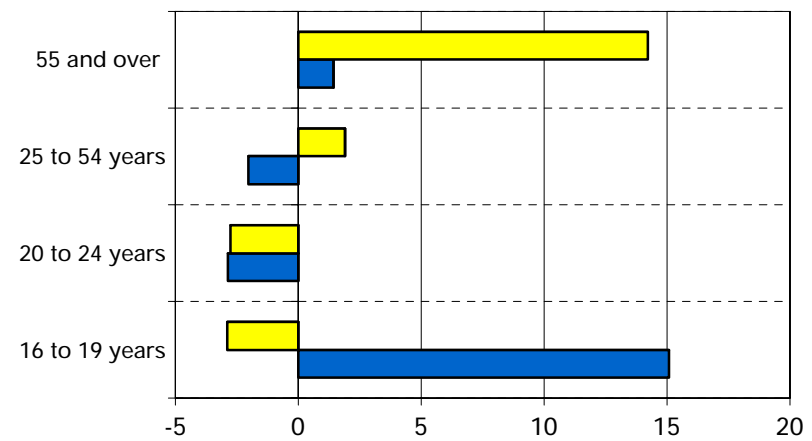
Variation percentages over the previous quarter and over the same quarter of the previous year

Employment



■ previous quarter ■ same quarter, previous year

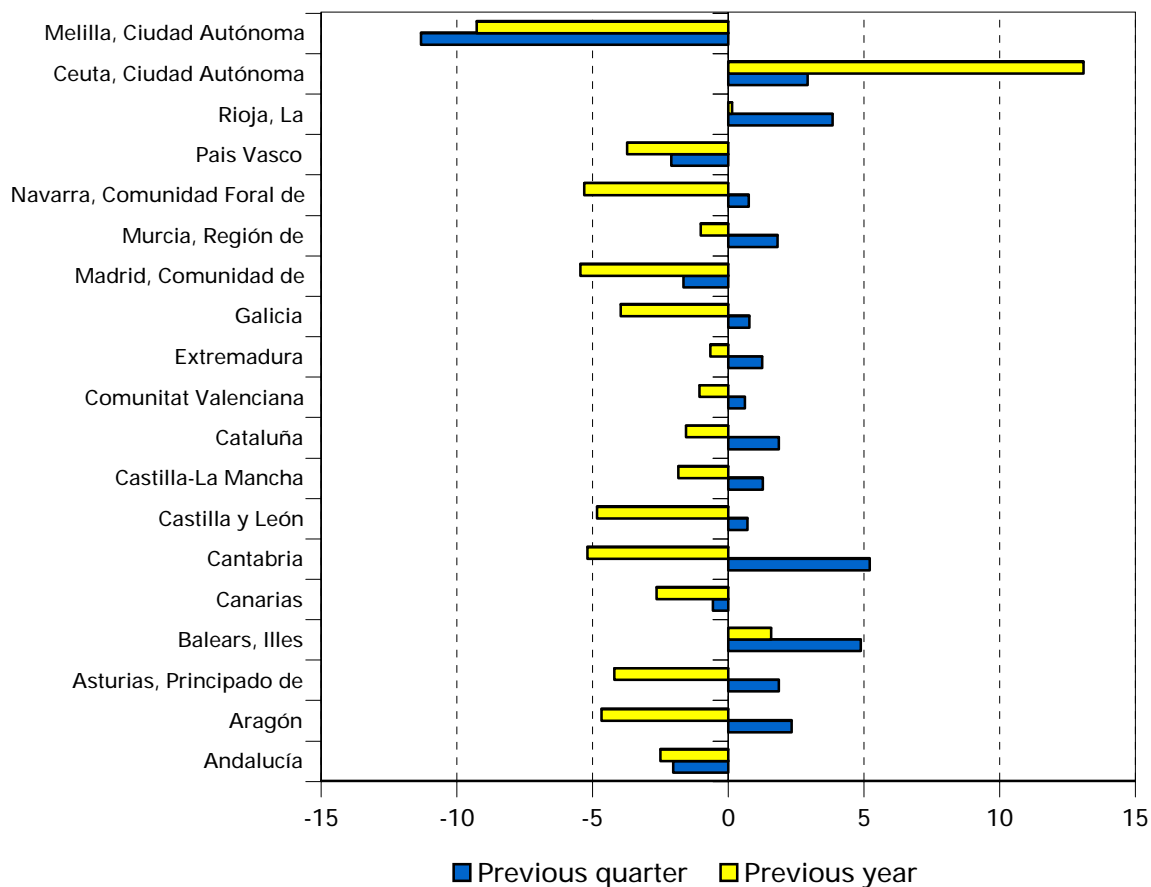
Unemployment



■ previous quarter ■ same quarter, previous year

Employment variation percentages over the previous quarter and over the same quarter of the previous year

Third Quarter 2013



Unemployment rate (Spain = 25.98)

