

26 October 2023

Economically Active Population Survey (EAPS) Third Quarter 2023

Main results

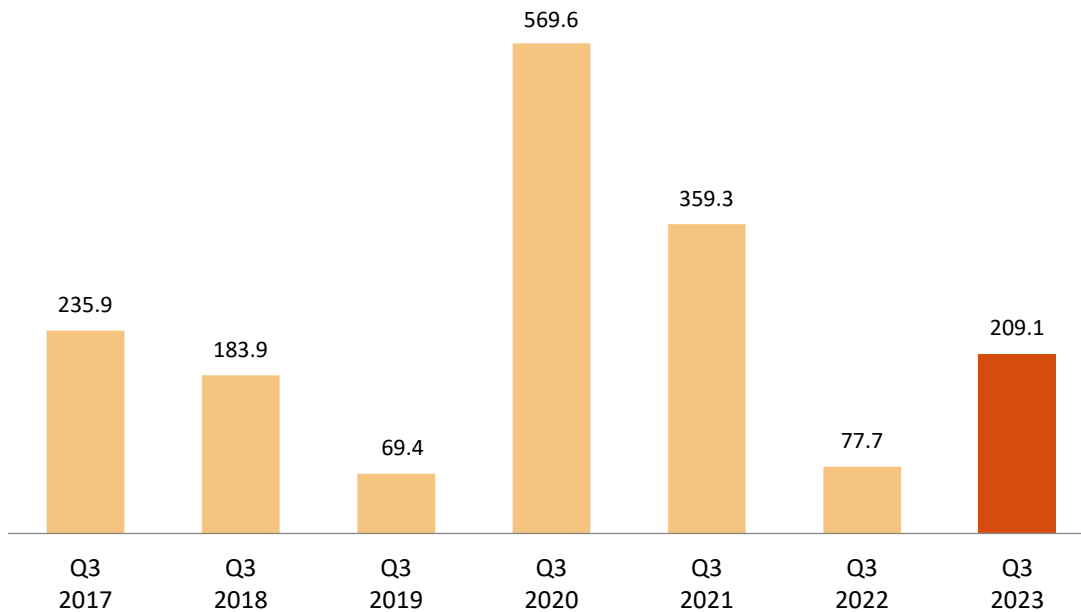
- Employment registered an increase of 209,100 persons in the third quarter of 2023 as compared with the previous quarter (0.99%), standing at 21,265,900 employed persons. In seasonally adjusted terms, the quarterly variation was 0.75%. Employment has grown by 720,100 persons (3.51%) in the last 12 months.
- This quarter, employment rose by 192,200 persons in the private sector and 17,000 in the public sector. In the last 12 months, employment has increased by 691,600 persons in the private sector and 28,600 in the public sector.
- Salaried employees increased this quarter by 266,000. Those with a permanent contract increased by 232,100, while those with a temporary contract increased by 33,900. In terms of annual variation, the number of salaried employees increased by 716,500 (permanent employment increased by 1,102,000 persons while temporary employment fell by 385,500). The number of self-employed workers increased by 60,200 this quarter and by 14,600 in the last 12 months.
- This quarter, employment increased in *Services* (138,700 more persons), *Industry* (98,800) and *Construction* (19,500), while it fell in *Agriculture* (47,800 less). In the past year, employment has risen in *Services* (682,400 more employed), in *Construction* (49,600) and in *Industry* (15,200), while it decreased in *Agriculture* (-27,100).
- The largest increases in employment this quarter were in Comunitat Valenciana (80,700 more), Cataluña (62,400) and Illes Balears (35,200). The largest decreases were observed in Comunidad de Madrid (-15,700), Andalucía (-3,800) and País Vasco (-2,800). In the past year, employment increased in almost all communities. Cataluña (156,500), Comunitat Valenciana (130,000) and Comunidad de Madrid (119,300) reported the largest increases.
- The number of unemployed persons increased by 92,700 this quarter (3.36%), standing at 2,855,200. In seasonally adjusted terms, the quarterly variation was 0.01%. Over the last 12 months, unemployment has decreased by 125,000 persons (-4.20%).
- The unemployment rate stood at 11.84%, which is 24 hundredths more than the previous quarter. Within the last year, this rate has decreased by 83 hundredths.
- By autonomous communities, the highest quarterly unemployment drops were in Castilla-La Mancha (-11,900), Illes Balears (-8,400) and Aragón (-5,600). The largest increases were registered in Comunidad de Madrid (37,600 more unemployed persons) and Andalucía (30,700). In annual terms, the largest decreases in the number of unemployed persons occurred in Comunitat Valenciana (-31,700), Canarias (-25,000) and Castilla-La Mancha (-24,900).
- The number of economically active persons increased this quarter by 301,900, up to 24,121,000. The activity rate increased by 44 hundredths, and now stands at 59.41%. Over the last year, the economically active population has increased by 595,100 persons.

Employment

The number of employed persons decreased by 209,100 persons in the third quarter of 2023, and now stands at 21,265,900. The quarterly employment variation rate is 0.99%.

The employment rate (percentage of employed persons in relation to the population aged 16 and over) is 52.38%, an increase of 25 hundredths as compared to the previous quarter. In annual variation, the rate rose by 97 hundredths.

Quarterly variation of employment. Thousands (Q3 compared with Q2 of the same year)

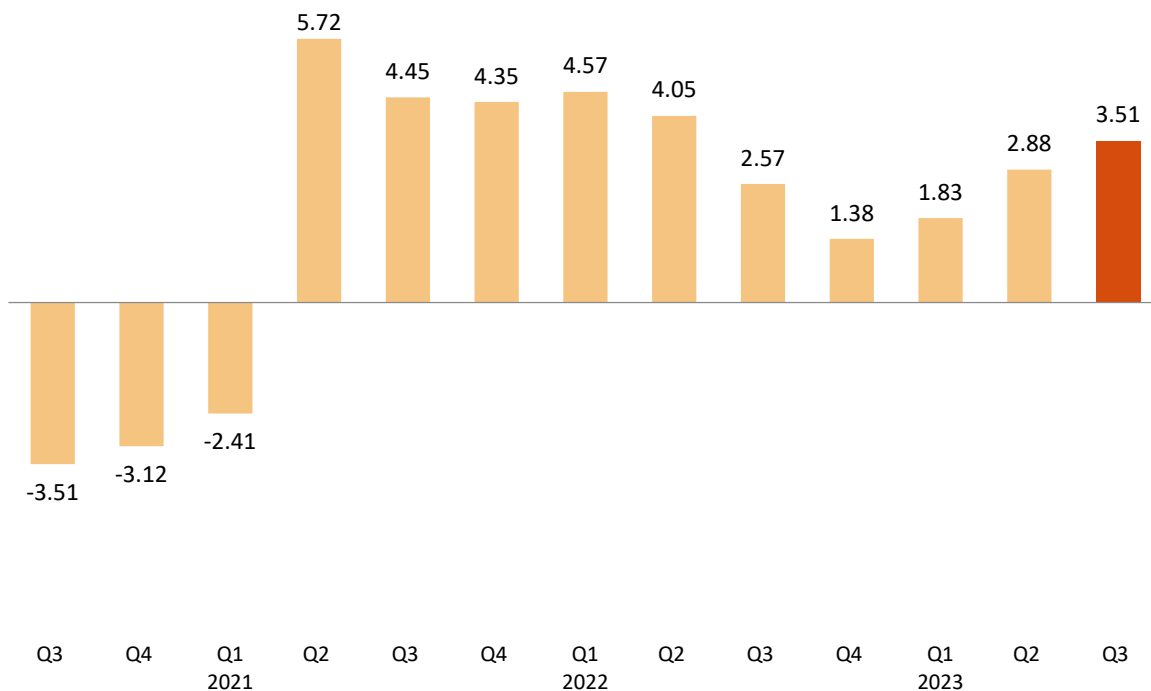


By gender, employment increased by 130,500 men and 78,600 women this quarter. By nationality, employment increased by 62,600 persons among Spaniards¹ and by 146,600 among foreign nationals.

In the past 12 months, employment has increased by 720,100 persons (272,600 men and 447,500 women). The annual variation rate of employment was 3.51%, representing an increase of 63 hundredths compared to the previous quarter.

¹ This includes those with dual nationality

Annual variation rate of employment. Percentage



This quarter, employment increased in *Services* (138,700 more persons), in *Industry* (98,800) and in *Construction* (19,500). At the same time, it decreased in *Agriculture* (47,800 less).

In the last year, employment increased in *Services* (682,400 more employed), in *Construction* (49,600) and in *Industry* (15,200). At the same time, it decreased in *Agriculture* (-27,100).

Full-time employment increased by 379,700 persons this quarter, whilst part-time employment decreased by 170,600. The percentage of persons employed part-time decreased nine tenths to 12.59%.

Over the last 12 months, full-time employment has increased by 665,000 persons and part-time employment by 55,100.

The number of salaried employees increased by 266,000 this quarter. Those with a permanent contract increased by 232,100, and those with a temporary contract by 33,900. The economic activity rate decreased seven hundredths, reaching 17.26%.

Over the last 12 months, the number of salaried employees has increased by 716,500. Permanent employment has increased by 1,102,000 persons, while temporary employment decreased by 385,500.

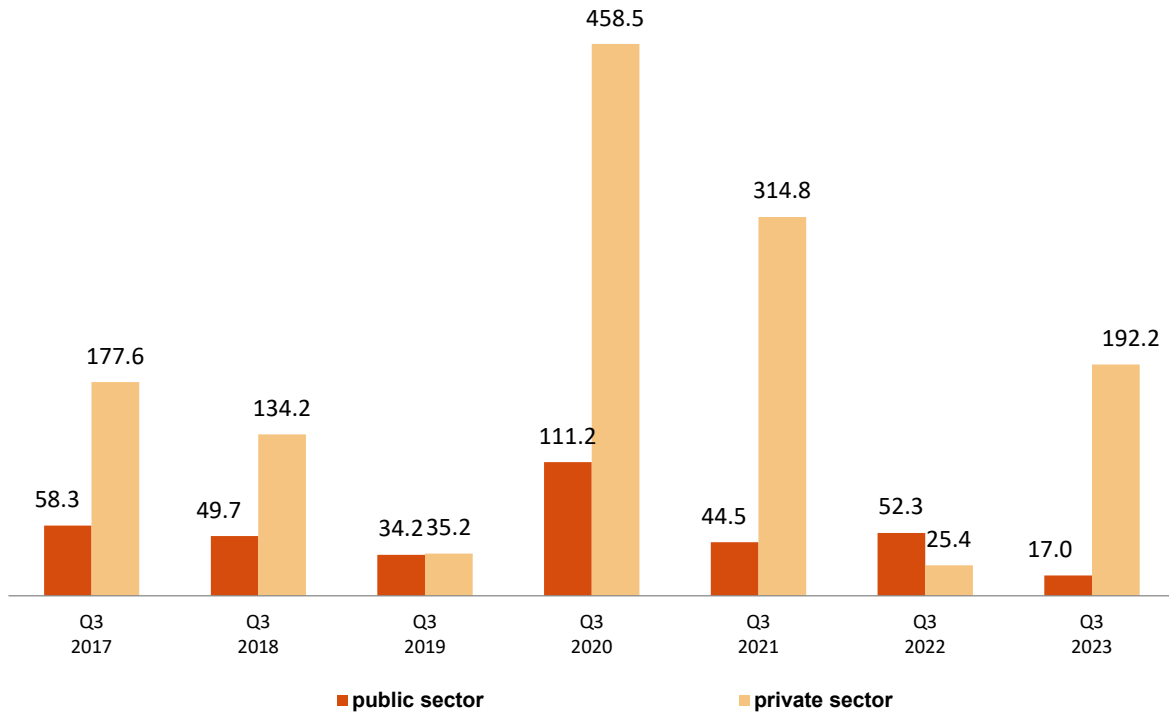
The number of self-employed persons decreased by 60,200 persons in quarterly variation, and increased by 14,600 over the past year.

This quarter, private employment¹ increased by 192,200 persons, standing at 17,731,100. Public employment² increased by 17,000, to 3,534,700.

¹ Employment in the private sector includes: wage-earners from the private sector, employers, independent workers and businesspersons without wage earners, members of a cooperative, family assistance and other professional situations.

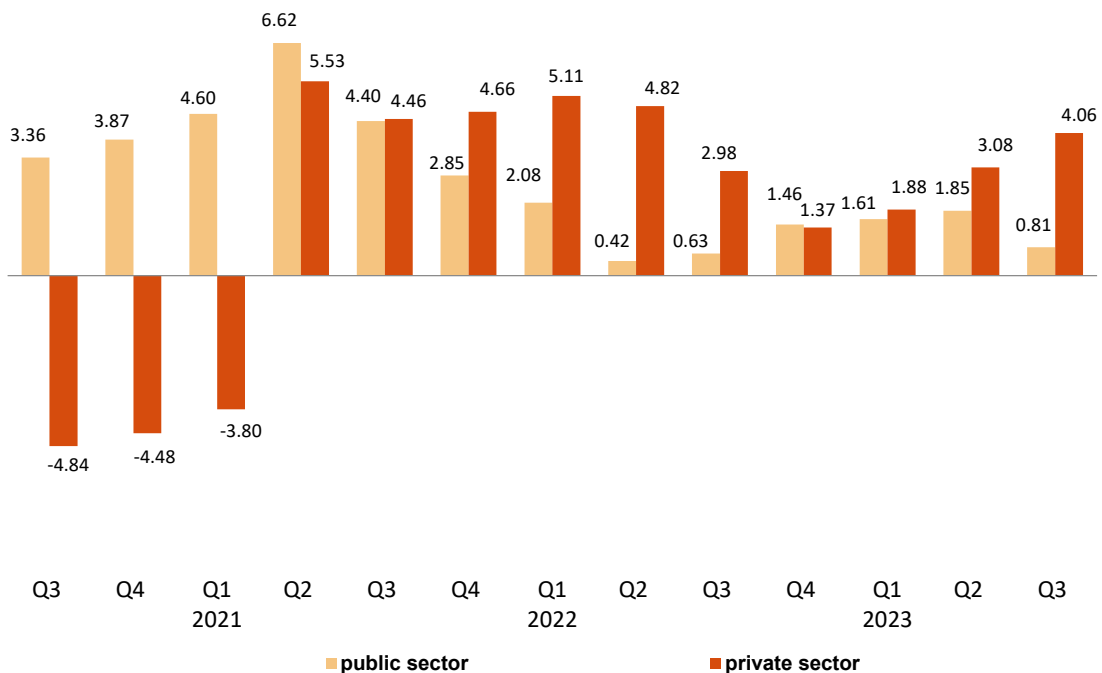
² Public sector employment includes all wage earners in public enterprises and in the National and Regional Administrations, including both workers contributing to Social Security and those affiliated with the Special Civil Service System.

Quarterly variation of employment by nature of employer. Thousands
(Q3 compared with Q2 of the same year)



Employment in the private sector showed an annual variation of 4.06%, and public employment 0.81%. In the past 12 months, employment has increased by 691,600 persons in the private sector and by 28,600 in the public sector.

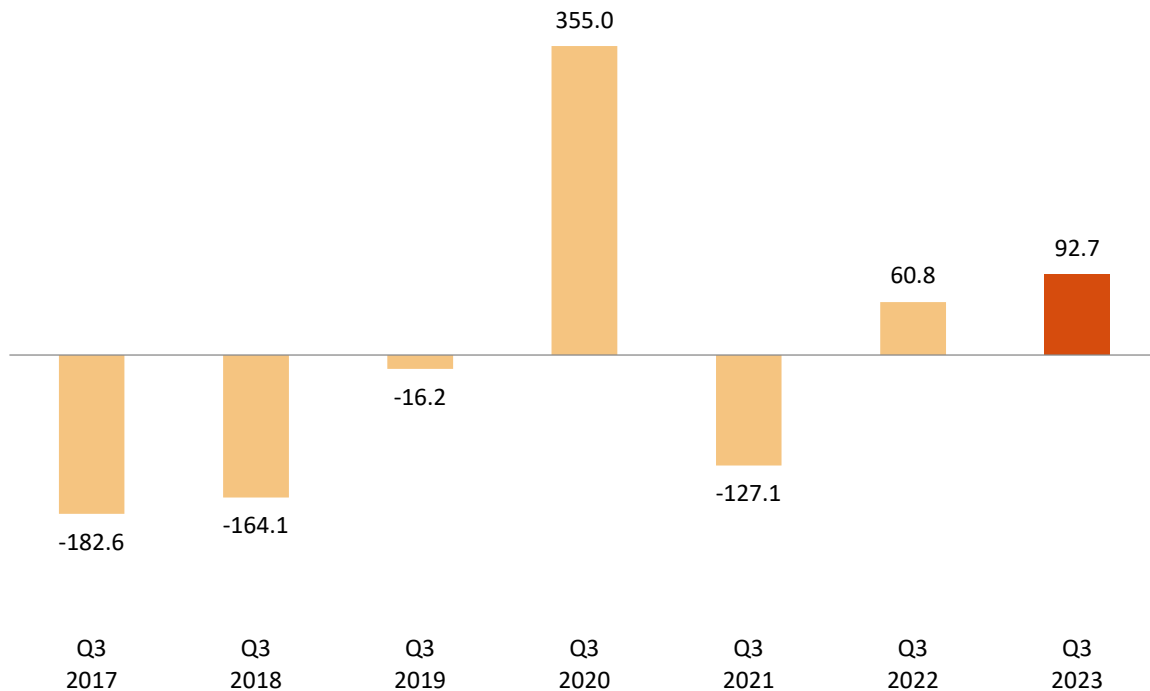
Annual variation rate of employment by nature of employer. Percentage



Unemployment and unemployment rate

Unemployment increased by 92,700 persons this quarter. The total number of unemployed persons stood at 2,855,200. In relative terms, the quarterly variation of unemployment was 3.36%.

Quarterly variation of unemployment. Thousands (Q3 compared with Q2 of the same year)



The unemployment rate increased by 24 hundredths and stood at 11.84%. In the last 12 months, this rate has decreased by 83 hundredths.

By gender, the number of unemployed men increased by 24,400 this quarter, standing at 1,301,800. Among women, unemployment increased by 68,400, reaching 1,553,400.

The female unemployment rate increased by 43 hundredths and stood at 13.59%. The male unemployment rate increased by 7 hundredths and stood at 10.26%.

By nationality, unemployment increased this quarter by 95,100 among Spaniards¹ while it decreased by 2,300 among foreigners. The unemployment rate was 11.02% for the Spanish population and 16.49% for the foreign population.

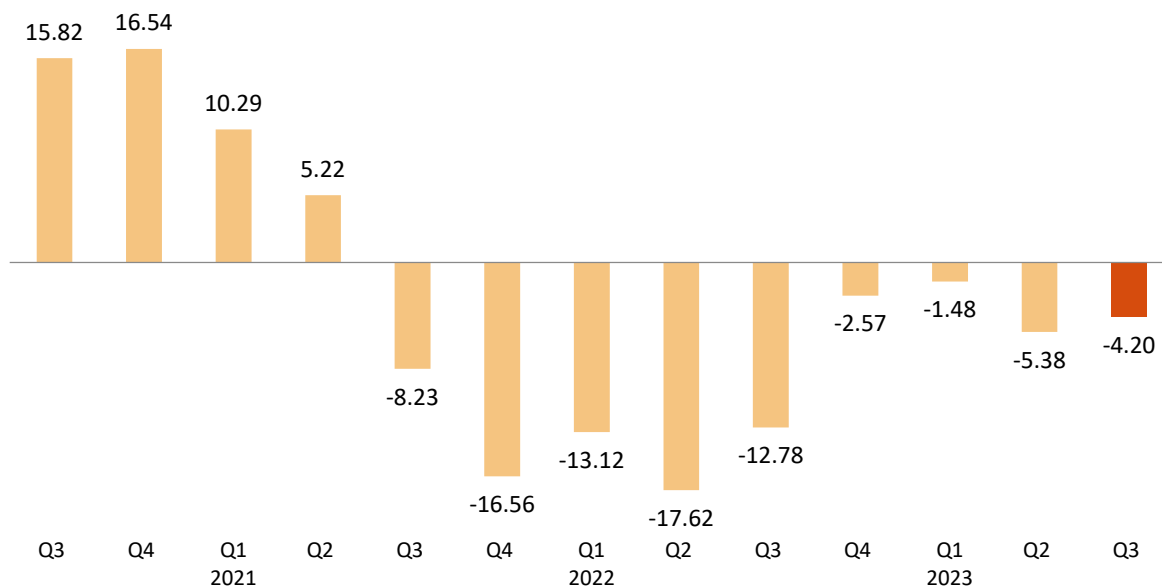
This quarter, unemployment increased in *Services* (35,900 more unemployed), in *Agriculture* (16,900) and in *Industry* (4,700). At the same time, it declined in *Construction* (-21,100).

Unemployment increased by 15,400 persons among those who lost their job over a year ago and by 40,900 among those who are seeking their first job.

The evolution of unemployment in the annual variation is -4.20%. The total number of unemployed persons has decreased by 125,000 persons in one year, with a decrease of 35,000 for men and of 90,000 for women.

¹ This includes those with dual nationality

Annual variation rate of unemployment. Percentage



By sectors, unemployment decreased last year in *Construction* (12,300 fewer unemployed) and in *Agriculture* (-11,000). It increased in *Services* (14,800) and in *Industry* (1,200).

On the other hand, the number of unemployed persons who lost their jobs over a year ago decreased by 88,500 and that of unemployed persons looking for their first job by 29,100.

Economically active population and activity rate

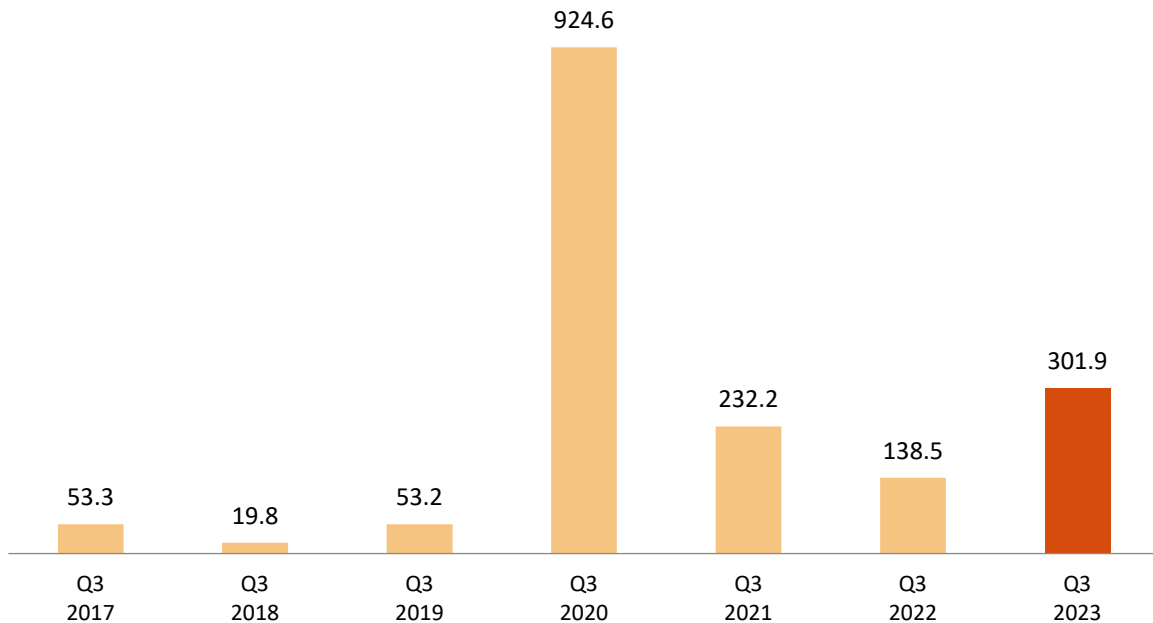
The economically active population increased by 301,900 persons in the third quarter, standing at 24,121,000. The number of economically active women increased by 147,000 and that of men by 154,900.

By nationality, the number of economically active persons increased in this quarter by 157,600 among Spaniards¹ and 144,200 among foreigners.

The economic activity rate increased by 44 hundredths, reaching 59.41%. The economic activity rate for males increased by 48 hundredths, standing at 64.41%, and that of females increased by 41 hundredths, reaching 54.70%.

¹ This includes those with dual nationality

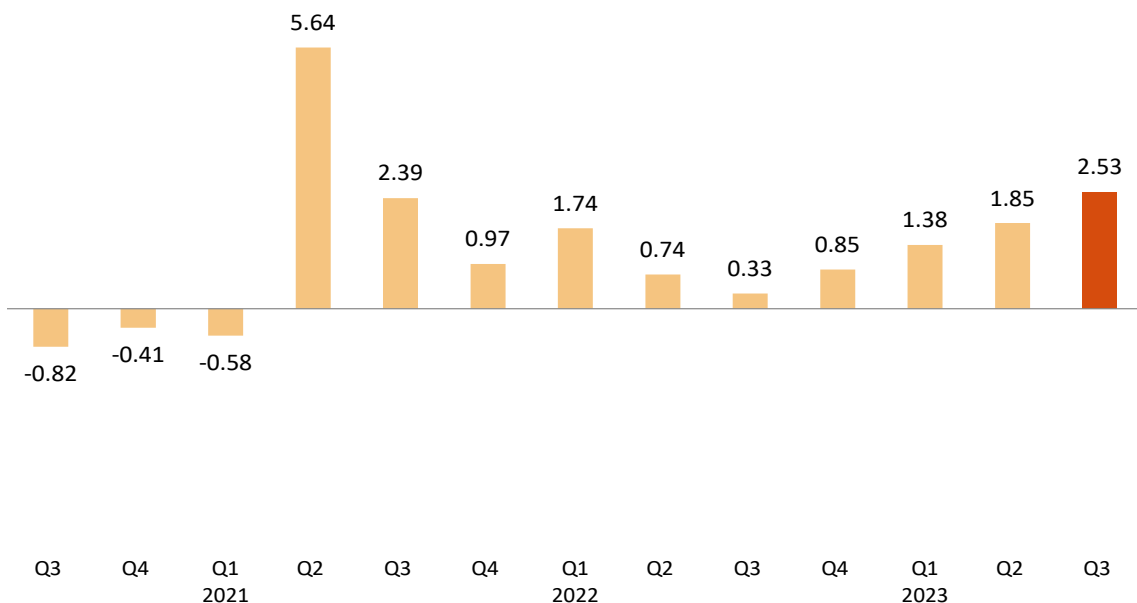
Quarterly variation of activity. Thousands (Q3 compared with Q2 of the same year)



The activity rate of Spaniards¹ increased by 32 hundredths as compared to the previous quarter, standing at 57.90%. For foreigners it increased by 1.01 points, reaching 69.83%. The almost 12-point difference between both activity rates is mainly explained by the different age structures for both populations.

In annual terms, the economically active population has increased by 595,100 persons. The annual variation rate of economically active persons is 2.53%.

Annual variation rate of activity. Percentage



¹ This includes those with dual nationality

Households

The number of households increased by 60,300 this quarter, and stands at 19,415,700. Of these, 5,461,100 are single-person households.

Households in which all economically active members were unemployed increased by 12,800 this quarter, up to a total of 928,800. Of these, 305,900 are single-person households.

On the other hand, the number of households in which all of the economically active members are employed increased by 20,500, standing at 11,578,300. Of these, 2,427,600 are single-person households.

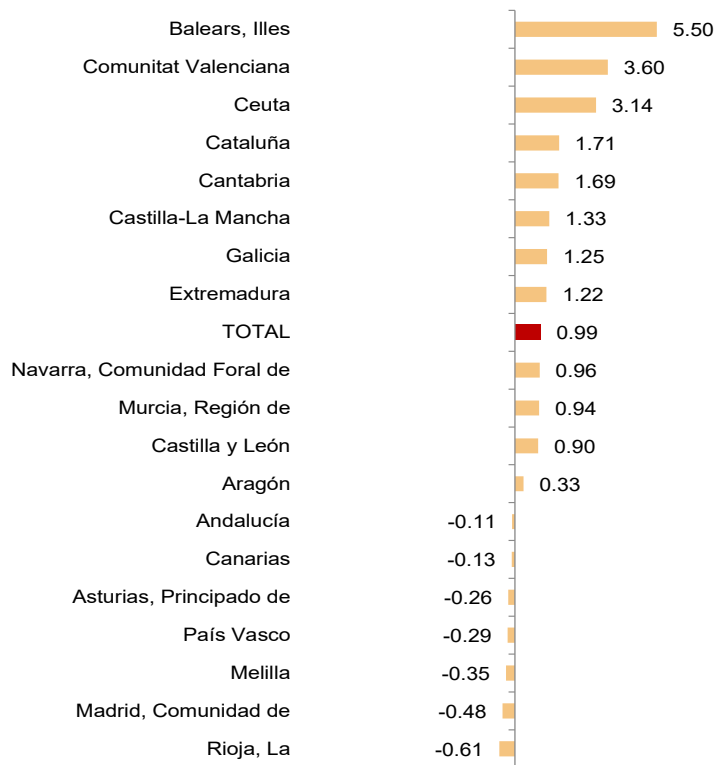
In an annual comparison, the number of households with at least one economically active member in which those members were unemployed decreased by 48,500, while those where all active members were employed increased by 284,000.

Results by Autonomous Communities¹

The largest increases in employment this quarter were in Comunitat Valenciana (80,700 more), Cataluña (62,400) and Illes Balears (35,200). In turn, the largest decreases were recorded in Comunidad de Madrid (-15,700), Andalucía (-3,800) and País Vasco (-2,800).

In relative terms, the Autonomous Communities with the highest quarterly employment increases were Illes Balears (5.50%), Comunitat Valenciana (3.60%) and Cataluña (1.71%).

Quarterly variation rate of employment by autonomous community. Percentage

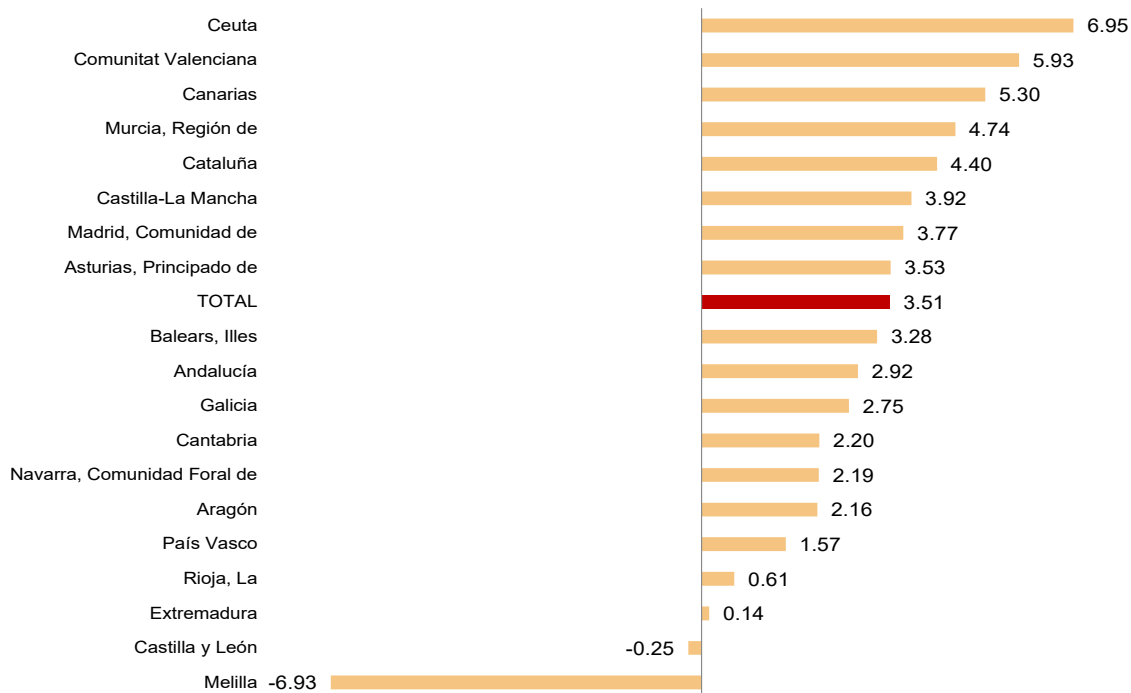


¹ As with the rest of the EAPS data, employment results in this section are presented according to the Autonomous Community where the persons interviewed in the survey reside, and not according to where their workplace is.

In the past year, employment increased in almost all communities. Cataluña (156,500), Comunitat Valenciana (130,000) and Comunidad de Madrid (119,300) reported the largest increases. The only decrease was recorded in Castilla y León (-2,500).

In relative terms, the Autonomous Communities with the largest annual employment variations were Comunitat Valenciana (5.93%), Canarias (5.30%) and Región de Murcia (4.74%). Castilla y León is the only community with a negative rate (-0.25%).

Annual variation rate of employment by autonomous community. Percentage



The largest quarterly unemployment decreases occurred in Castilla-La Mancha (-11,900), Illes Balears (-8,400) and Aragón (-5,600). The largest increases were in Comunidad de Madrid (37,600 more), Andalucía (30,700) and Principado de Asturias and País Vasco (13,400 each).

In annual terms, the largest decreases in the number of unemployed persons occurred in Comunitat Valenciana (-31,700), Canarias (-25,000) and Castilla-La Mancha (-24,900). On the other hand, the largest unemployment increases over the last 12 months were observed in Andalucía (7,000 more unemployed), Castilla y León (6,700) and Extremadura (4,100).

Illes Balears (5.72%), Cantabria (7.48%) and Aragón (7.77%) recorded the lowest unemployment rates this quarter. At the other end of the scale, Andalucía (18.67%), Extremadura (16.50%) and Canarias (15.23%) showed the highest rates.

This quarter, the greatest increases in economic activity were registered in Comunitat Valenciana (79,500 more economically active individuals), Cataluña (71,000) and Andalucía (26,900). The largest decreases were observed in Aragón (3,600 less economically active individuals) and in Canarias (-1,900).

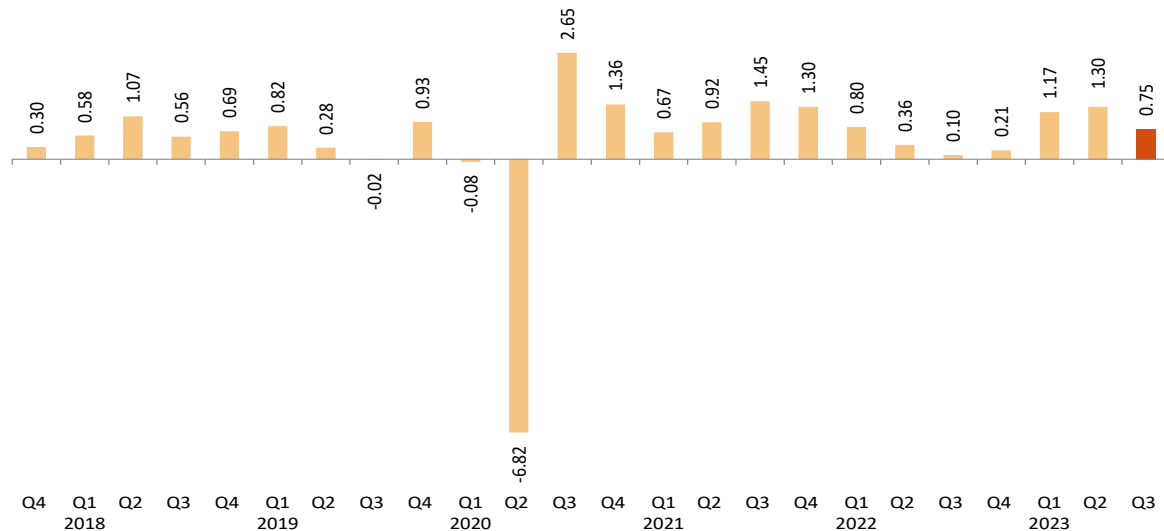
Over the last 12 months, activity has increased in all communities. The largest increases were recorded in Cataluña (136,700 more), Andalucía (102,700) and Comunidad de Madrid (101,500).

The activity rates this quarter fluctuated between 67.22% for Illes Balears and 51.68% for Principado de Asturias.

Seasonally adjusted series

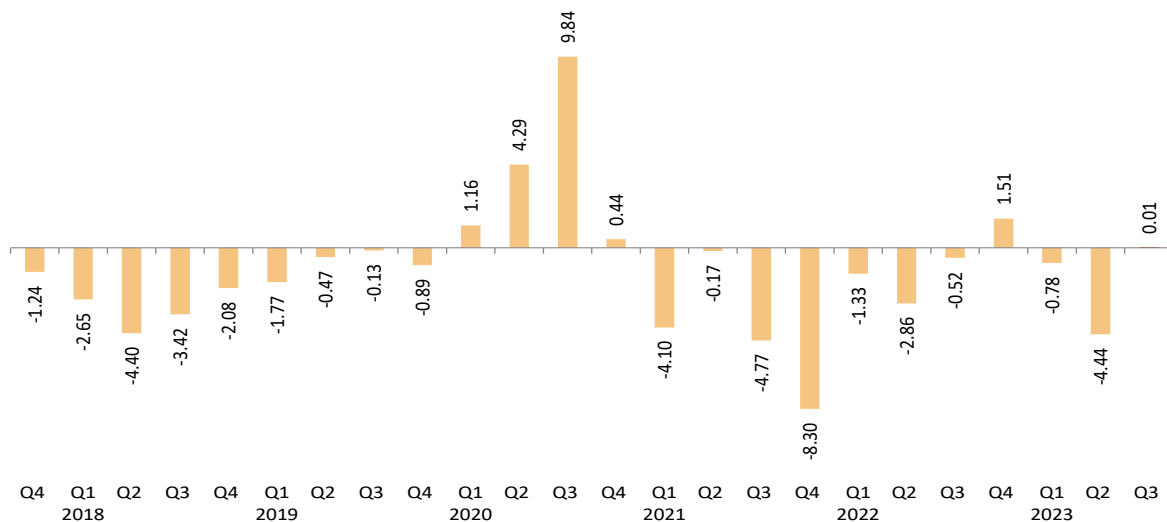
In the third quarter, the quarterly employment variation rate adjusted for seasonal effects was 0.75%.

Quarterly variation rate of seasonally adjusted employment. Percentage



As regards seasonally-adjusted unemployment results, there was an increase of 0.01%.

Quarterly variation rate of seasonally adjusted unemployment. Percentage



As explained in the methodology used for seasonal adjustment, the seasonal adjustment model is maintained for a year, with the first quarters corresponding to the time of the model's re-identification, but the coefficients are recalculated quarterly, so that each quarter the previous results are reviewed (either by re-identification or by revision of coefficients) and therefore the latest series available must always be consulted.

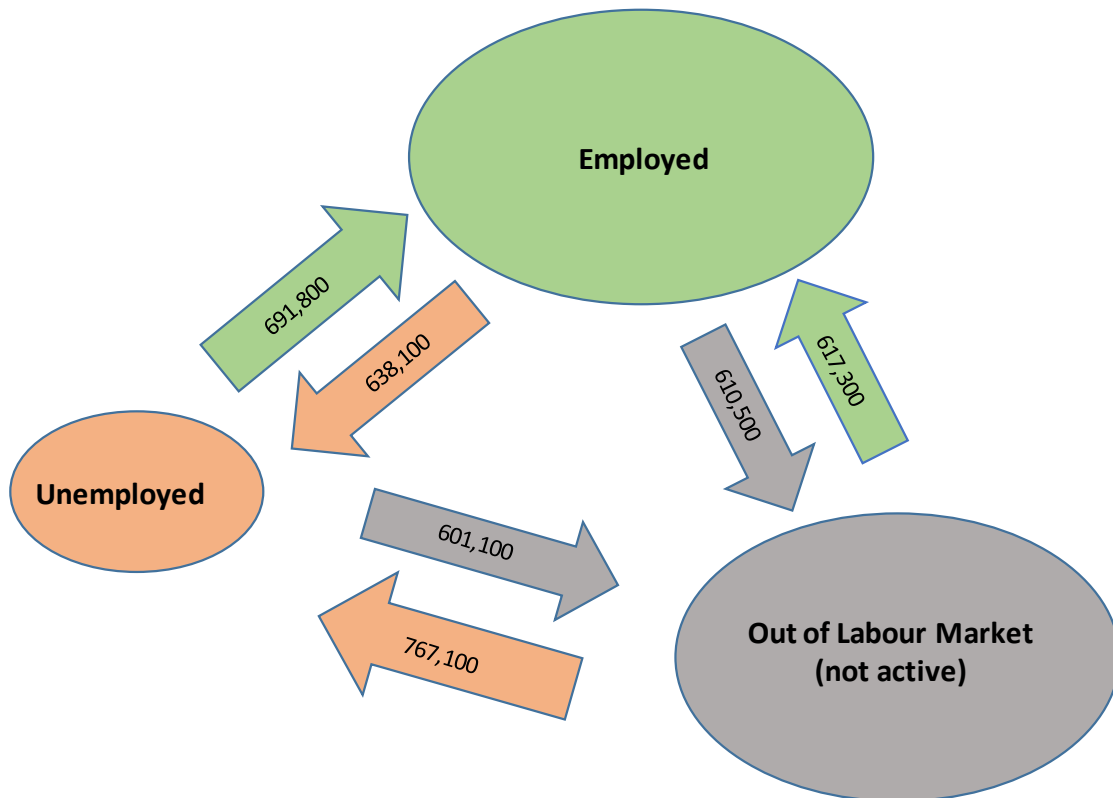
The series of the quarterly variation rates of the seasonally adjusted results of employment and unemployment since 2005 and the description of the method used can be found at:

http://www.ine.es/daco/daco42/daco4211/epa_desestacional.xlsx

Flows in absolute values with respect to the previous quarter¹

This quarter has seen an increase in flows towards unemployment, both from those who were employed and those who were economically inactive in the previous quarter. An increase in flows towards inactivity from employment and unemployment is also observed.

Flows of labour status from Q3-2023 to Q2-2022. Number of persons

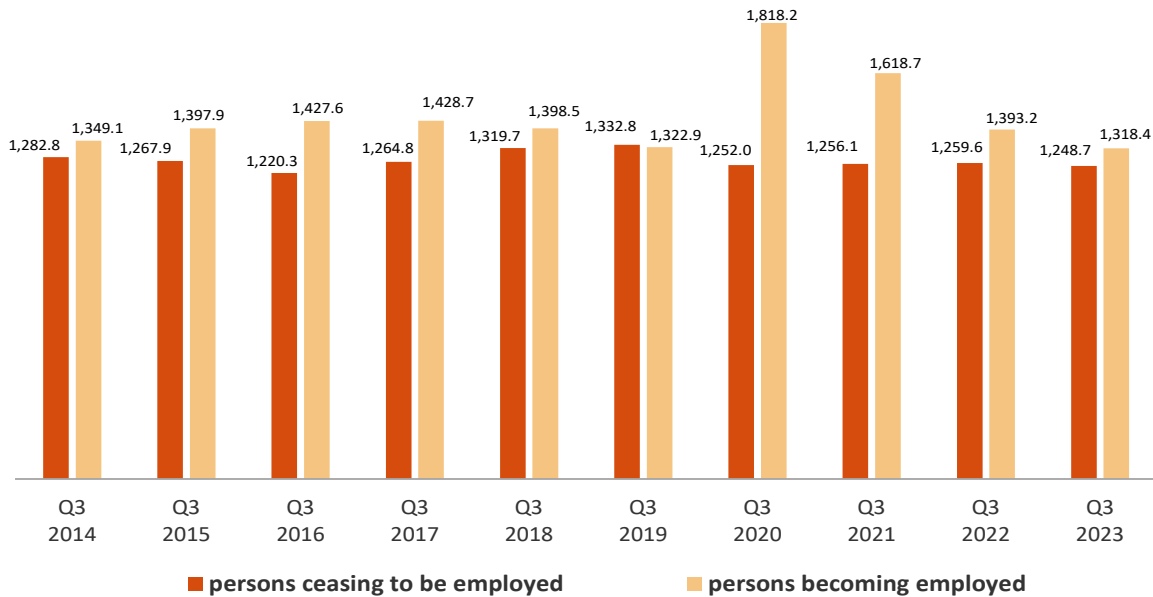


The total inflow to employment in the third quarter was 1,318,400 persons, 74,800 fewer than in the same quarter of the previous year.

However, the outflow from employment was 1,248,700 people, which is 10,900 fewer than in the same quarter of 2022.

¹ This section compiles the results of the Economically Active Population Flow Statistics. Due to the methodology used in its preparation, the results might not necessarily match the net balances of quarterly EAPS. The differences are caused by the “no data recorded” groups (persons turning 16 years old in the change between one quarter and the next and those who were not living in Spain in the previous quarter).

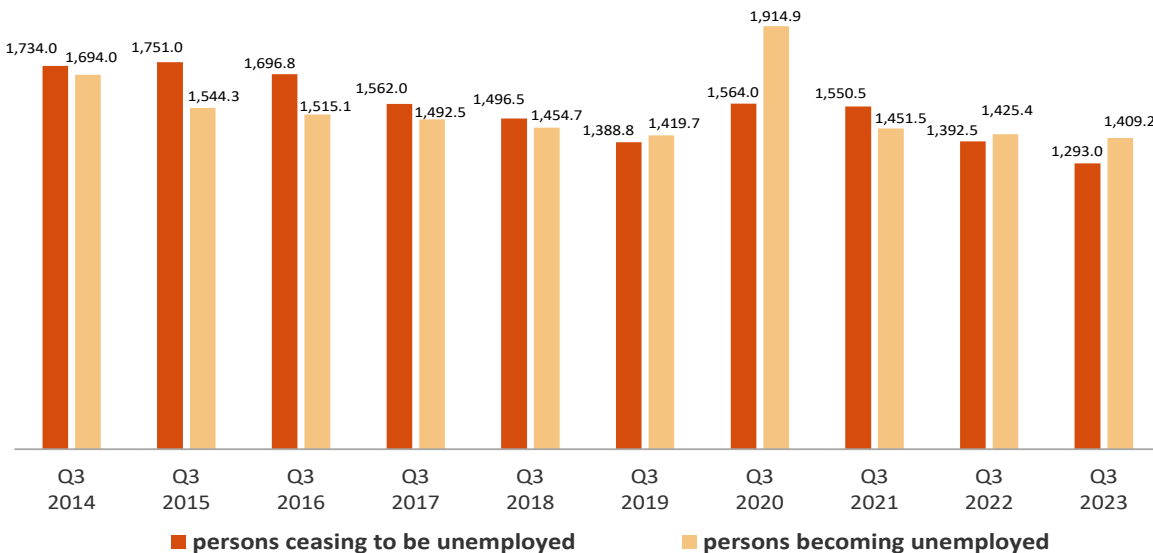
Flows of persons becoming and ceasing to be employed each quarter. Thousands



The number of persons who were unemployed three months ago but not currently unemployed was 1,293,000, 99,500 fewer than in the same period in 2022.

However, the total inflow to unemployment came to 1,409,200 persons, 16,200 fewer than in the third quarter of 2022.

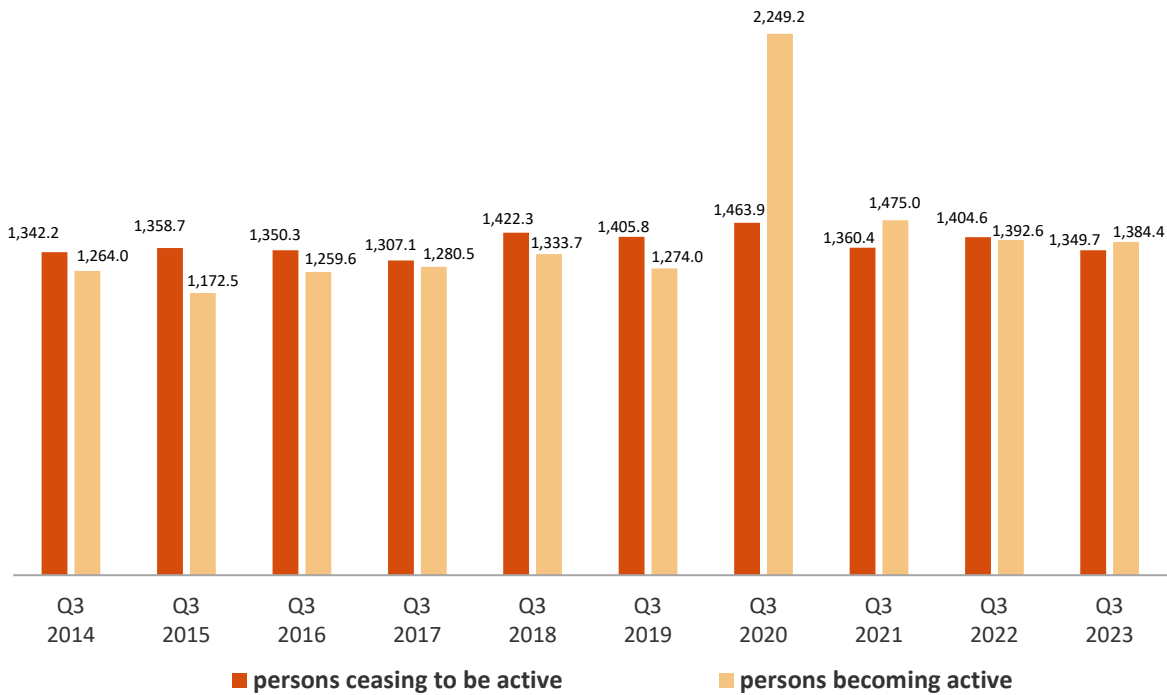
Flows of persons becoming and ceasing to be unemployed each quarter. Thousands



The inflow to activity in this third quarter was 1,384,400, 8,200 fewer than that of the same period in 2022.

Meanwhile, a total of 1,349,700 people have become inactive this quarter, compared to 1,404,600 who did so during the same quarter in the previous year (that is, 54,900 fewer).

Flows of persons becoming and ceasing to be active each quarter. Thousands



The flow data on which these comments are based can be found in the annex to this press release <http://www.ine.es/daco/daco42/daco4211/epafuj0323.xlsx>

EAPS results by province

The provincial results summary of the EAPS may be accessed via the following link:

<http://www.ine.es/daco/daco42/daco4211/epapro0323.pdf>

All the provincial information can also be accessed from the INEbase database:

<http://www.ine.es/dynt3/inebase/index.html?padre=996>

Data Review and Update

The data published today are final. All results are available on INEBase.

Methodological note

The Labour Force Survey (EAPS) has been carried out since 1964. The methodology currently used was put in place in 2021, and adapts the previous methodology (begun in 2005) to the new regulations of the European Labour Force Survey.

It is a continuous, quarterly research activity addressed to families, whose main purpose is to obtain data on the labour force and its various categories (employed, unemployed), as well as on the population outside the labour market (inactive).

As of the third quarter of 2009, the survey includes an additional sample in Galicia that is collected by the Galician Statistics Institute (IGE) using the same fieldwork system and methodology as the INE.

Type of survey: quarterly continuous survey.

Population scope: population residing in family homes.

Geographical scope: the entire national territory.

Reference period of the results: the quarter.

Reference period of the information: the week before the interview.

Sample size: In 2021, the number of census tracts was 3822, of which 234 were the additional sample from Galicia. With the change in the arrangement of sections, this number of sections has increased gradually and will reach a total of 5,298 in 2024, of which 288 will be the additional sample from Galicia.

The number of homes selected per section will go from an average of 20 to 14. Currently there are around 55,000 dwellings and 130,000 people.

Sampling type: two-stage sampling with stratification in the first stage units. The first stage units are the census tracts and the second stage units are the inhabited family dwellings.

Collection method: personal, telephone and web interviews.

For more information, the methodology and technical details of the survey design and data quality assessment can be accessed at:

https://www.ine.es/dyngs/INEbase/es/operacion.htm?c=Estadistica_C&cid=1254736176918&menu=metodologia&idp=1254735976595

The standardised methodological report can be found at:

<https://www.ine.es/dynt3/metadatos/es/RespuestaDatos.html?oe=30308>

INE statistics are produced in accordance with the Code of Good Practice for European Statistics, which is the basis for the institution's quality policy and strategy. For more information, see the section on [Quality in the INE and Code of Good Practices](#) on the INE's website.

The Statistics on Economically Active Population Flows (EAPFS) collect information regarding the follow-up of the population, or specific groups thereof, between one quarter and the previous one in absolute values, regarding their relation with labour market. This information links the interviewee's situations in two moments of time on the basis of the EAPS in order to study their evolution.

Given that in the EAPS sample one sixth is renewed each quarter and the remaining 5/6 are kept fixed between two consecutive quarters, the common part of the sample between the two iterations of the survey is used to obtain flow statistics from the questions relating to the interviewee's situation in the current and previous quarters.

Type of survey: quarterly exploitation of the common EAPS sample between consecutive quarters that provides estimates in absolute values of the relation with the activity in the current period compared with that of the previous quarter.

Population scope: population residing in family homes.

Geographical scope: the entire national territory.

Reference period of the results: the quarter.

Reference period of the information: the week before the interview.

Sample size: In 2021, the number of census tracts was 3822, of which 234 were the additional sample from Galicia. With the change in the arrangement of sections, this number of sections has increased gradually and will reach a total of 5,298 in 2024, of which 288 will be the additional sample from Galicia.

The number of homes selected per section will go from an average of 20 to 14. Currently there are around 55,000 dwellings and 130,000 people.

Sampling type: two-stage sampling with stratification in the first stage units. The first stage units are the census tracts and the second stage units are the inhabited family dwellings.

Collection method: personal and telephone interview.

For further information, the methodology can be accessed at:

https://www.ine.es/inebaseDYN/flujo30310/docs/metoflujos_valores_absolutos.pdf

The standardised methodological report can be found at:

<https://www.ine.es/dynt3/metadatos/es/RespuestaDatos.html?oe=30310>

For further information see **INEbase:** www.ine.es/en/ Twitter: [@es_ine](https://twitter.com/es_ine)

All press releases at: www.ine.es/en/prensa/prensa_en.htm

Press office: Telephone numbers: (+34) 91 583 93 63 /94 08 – gprensa@ine.es

Information Area: Telephone number: (+34) 91 583 91 00 – www.ine.es/infoine/?L=1

Economically Active Population Survey Third Quarter 2023

National results

(Continues)

	Current quarter	Variation on previous quarter		Variation on same quarter, previous year	
		Difference	Percentage	Difference	Percentage
1. Population aged 16 years and over by sex and labour status					
BOTH SEXES					
Population aged 16 years and over	40.600,5	207,9	0,51	631,4	1,58
Active population	24.121,0	301,9	1,27	595,1	2,53
- Employed persons	21.265,9	209,1	0,99	720,1	3,51
- Unemployed persons	2.855,2	92,7	3,36	-125,0	-4,20
Inactive population	16.479,5	-94,0	-0,57	36,3	0,22
Activity rate	59,41	0,44	-	0,55	-
Unemployment rate	11,84	0,24	-	-0,83	-
Population aged 16 to 64 years	31.086,8	139,4	0,45	403,3	1,31
Activity rate (16-64)	76,43	0,59	-	0,85	-
Unemployment rate (16-64)	11,90	0,23	-	-0,88	-
Employment rate (16-64)	67,34	0,34	-	1,41	-
MALES					
Population aged 16 years and over	19.702,1	95,4	0,49	302,3	1,56
Active population	12.689,4	154,9	1,24	237,6	1,91
- Employed persons	11.387,7	130,5	1,16	272,6	2,45
- Unemployed persons	1.301,8	24,4	1,91	-35,0	-2,62
Inactive population	7.012,7	-59,5	-0,84	64,7	0,93
Activity rate	64,41	0,48	-	0,22	-
Unemployment rate	10,26	0,07	-	-0,48	-
Population aged 16 to 64 years	15.501,7	62,9	0,41	194,0	1,27
Activity rate (16-64)	80,58	0,64	-	0,47	-
Unemployment rate (16-64)	10,34	0,07	-	-0,50	-
Employment rate (16-64)	72,25	0,52	-	0,82	-
FEMALES					
Population aged 16 years and over	20.898,4	112,5	0,54	329,1	1,60
Active population	11.431,6	147,0	1,30	357,5	3,23
- Employed persons	9.878,2	78,6	0,80	447,5	4,75
- Unemployed persons	1.553,4	68,4	4,60	-90,0	-5,48
Inactive population	9.466,8	-34,5	-0,36	-28,4	-0,30
Activity rate	54,70	0,41	-	0,86	-
Unemployment rate	13,59	0,43	-	-1,25	-
Population aged 16 to 64 years	15.585,1	76,5	0,49	209,3	1,36
Activity rate (16-64)	72,31	0,55	-	1,23	-
Unemployment rate (16-64)	13,63	0,42	-	-1,32	-
Employment rate (16-64)	62,45	0,18	-	2,00	-

2. Spanish population⁽¹⁾ aged 16 years and over by labour status

SPANISH POPULATION AGED 16 YEARS AND OVER	35.461,6	73,7	0,21	164,0	0,46
Active population	20.532,6	157,6	0,77	233,0	1,15
- Employed persons	18.269,1	62,6	0,34	356,2	1,99
- Unemployed persons	2.263,5	95,1	4,38	-123,2	-5,16
Inactive population	14.928,9	-83,9	-0,56	-69,0	-0,46
Activity rate	57,90	0,32	-	0,39	-
Unemployment rate	11,02	0,38	-	-0,73	-

⁽¹⁾ including dual nationality

26 October 2023

National results

(Continuation)

	Current quarter	Variation on previous quarter		Variation on same quarter, previous year	
		Difference	Percentage	Difference	Percentage
3. Foreign population aged 16 years and over by labour status					
FOREIGN POPULATION AGED 16 YEARS AND OVER	5.139,0	134,2	2,68	467,4	10,00
Active population	3.588,4	144,2	4,19	362,1	11,22
- Employed persons	2.996,7	146,6	5,14	363,9	13,82
- Unemployed persons	591,7	-2,3	-0,39	-1,8	-0,31
Inactive population	1.550,6	-10,1	-0,65	105,3	7,28
Activity rate	69,83	1,01	-	0,76	-
Unemployment rate	16,49	-0,76	-	-1,91	-
4. Employed persons by sex, age group and economic sector					
BOTH SEXES	21.265,9	209,1	0,99	720,1	3,51
16 to 19 years	211,4	49,2	30,34	29,5	16,23
20 to 24 years	1.132,8	89,3	8,56	113,6	11,14
25 to 29 years	1.834,3	-29,9	-1,60	90,2	5,17
30 to 34 years	2.185,1	-10,0	-0,46	84,6	4,03
35 to 39 years	2.424,8	22,4	0,93	47,8	2,01
40 to 44 years	2.921,6	-8,4	-0,29	-54,6	-1,83
45 to 49 years	3.216,2	-21,1	-0,65	46,2	1,46
50 to 54 years	2.928,0	24,3	0,84	142,9	5,13
55 and over	4.411,6	93,3	2,16	219,9	5,25
MALES	11.387,7	130,5	1,16	272,6	2,45
16 to 19 years	119,6	29,0	31,96	20,9	21,21
20 to 24 years	605,5	32,3	5,63	28,7	4,97
25 to 29 years	970,5	5,1	0,53	31,1	3,32
30 to 34 years	1.162,7	4,3	0,37	55,8	5,04
35 to 39 years	1.279,7	19,2	1,52	21,6	1,72
40 to 44 years	1.535,0	-15,6	-1,00	-51,7	-3,26
45 to 49 years	1.711,9	-26,1	-1,50	0,7	0,04
50 to 54 years	1.575,3	13,2	0,84	46,0	3,01
55 and over	2.427,3	69,2	2,94	119,4	5,18
FEMALES	9.878,2	78,6	0,80	447,5	4,75
16 to 19 years	91,8	20,2	28,29	8,6	10,32
20 to 24 years	527,3	57,0	12,13	84,9	19,18
25 to 29 years	863,8	-35,0	-3,89	59,0	7,33
30 to 34 years	1.022,4	-14,3	-1,38	28,8	2,90
35 to 39 years	1.145,0	3,2	0,28	26,2	2,34
40 to 44 years	1.386,6	7,2	0,52	-2,9	-0,21
45 to 49 years	1.504,3	5,0	0,33	45,5	3,12
50 to 54 years	1.352,7	11,2	0,83	96,9	7,72
55 and over	1.984,3	24,0	1,23	100,5	5,33
TOTAL EMPLOYED PERSONS	21.265,9	209,1	0,99	720,1	3,51
Agriculture	701,9	-47,8	-6,38	-27,1	-3,72
Industry	2.824,9	98,8	3,63	15,2	0,54
Construction	1.378,5	19,5	1,43	49,6	3,74
Services	16.360,6	138,7	0,85	682,4	4,35

National results

(Continuation)

	Current quarter	Variation on previous quarter		Variation on same quarter, previous year	
		Difference	Percentage	Difference	Percentage

5. Employed persons by professional status, type of contract, public / private sectors and working hours

TOTAL EMPLOYED PERSONS	21.265,9	209,1	0,99	720,1	3,51
BY PROFESSIONAL STATUS					
Self-employed persons	3.136,1	-60,2	-1,88	14,6	0,47
- Employers	1.020,8	4,7	0,46	39,4	4,02
- Independent workers	2.034,9	-64,9	-3,09	6,8	0,33
- Cooperative members	18,1	-4,3	-19,13	-5,6	-23,61
- Family workers	62,3	4,2	7,29	-26,1	-29,49
Employees	18.119,7	266,0	1,49	716,5	4,12
- With a permanent job	14.992,8	232,1	1,57	1.102,0	7,93
- With a temporary job	3.126,9	33,9	1,09	-385,5	-10,98
Others	10,1	3,4	50,41	-10,9	-51,87
BY PUBLIC / PRIVATE SECTORS					
Public sector employed persons	3.534,7	17,0	0,48	28,6	0,81
Private sector employed persons	17.731,1	192,2	1,10	691,6	4,06
BY WORKING HOURS					
Full-time employed persons	18.588,7	379,7	2,09	665,0	3,71
Males	10.662,4	175,6	1,67	245,0	2,35
Females	7.926,3	204,2	2,64	419,9	5,59
Part-time employed persons	2.677,2	-170,6	-5,99	55,1	2,10
Males	725,3	-45,1	-5,85	27,6	3,95
Females	1.951,9	-125,6	-6,04	27,6	1,43

(*) Private employment includes all persons in employment other than public employees. Namely: private employees, employers, independent workers, cooperative members, family workers and other professional status.

6. Unemployed persons by sex, age group, and economic sector

BOTH SEXES	2.855,2	92,7	3,36	-125,0	-4,20
16 to 19 years	142,0	19,9	16,31	-9,4	-6,19
20 to 24 years	376,1	30,6	8,85	-12,6	-3,23
25 to 54 years	1.801,0	41,2	2,34	-148,7	-7,63
55 and over	536,1	1,0	0,19	45,6	9,29
MALES	1.301,8	24,4	1,91	-35,0	-2,62
16 to 19 years	80,6	11,8	17,16	-2,8	-3,30
20 to 24 years	209,6	26,1	14,24	17,0	8,80
25 to 54 years	774,4	-9,4	-1,20	-60,4	-7,23
55 and over	237,1	-4,2	-1,73	11,2	4,93
FEMALES	1.553,4	68,4	4,60	-90,0	-5,48
16 to 19 years	61,3	8,1	15,21	-6,6	-9,74
20 to 24 years	166,5	4,4	2,74	-29,5	-15,06
25 to 54 years	1.026,6	50,6	5,19	-88,3	-7,92
55 and over	299,0	5,2	1,77	34,4	13,02
TOTAL UNEMPLOYED PERSONS	2.855,2	92,7	3,36	-125,0	-4,20
Agriculture	148,2	16,9	12,90	-11,0	-6,92
Industry	145,7	4,7	3,36	1,2	0,81
Construction	88,9	-21,1	-19,17	-12,3	-12,18
Services	1.083,8	35,9	3,42	14,8	1,38
Lost their job more than 1 year ago	1.055,1	15,4	1,48	-88,5	-7,74
First job seekers	333,4	40,9	13,98	-29,1	-8,03

National results

(Conclusion)

	Current quarter	Variation on previous quarter		Variation on same quarter, previous year	
		Difference	Percentage	Difference	Percentage

7. Unemployment rate by relationship with the reference person

	Current quarter	Variation on previous quarter	Percentage	Variation on same quarter, previous year	Percentage
TOTAL	11,84	0,24	-	-0,83	-
Reference person	9,99	0,13	-	-0,58	-
Spouse or partner	9,33	0,50	-	-0,52	-
Child	21,41	0,30	-	-2,33	-
Other relatives	15,44	-3,04	-	-0,10	-
Unrelated persons	12,63	3,04	-	0,89	-

8. Household data

	Current quarter	Variation on previous quarter	Percentage	Variation on same quarter, previous year	Percentage
TOTAL HOUSEHOLDS	19.415,7	60,3	0,31	285,4	1,49
Households with at least one active member	14.045,5	83,8	0,60	217,3	1,57
- All members employed	11.578,3	20,5	0,18	284,0	2,51
- All members unemployed	928,8	12,8	1,40	-48,5	-4,97
Households without any active population	5.370,2	-23,4	-0,43	68,2	1,29

Mobility according to activity in current and previous quarter

Classification in previous quarter	Classification in current quarter			
	Total	Employed	Unemployed persons	Inactive
BOTH SEXES				
Total	40.600,5	21.265,9	2.855,2	16.479,5
Employed persons	21.196,1	19.947,4	638,1	610,5
Unemployed persons	2.738,9	691,8	1.446,0	601,1
Inactive	16.514,2	617,3	767,1	15.129,8
Not classifiable	151,3	9,3	4,0	138,1
MALES				
Total	19.711,7	11.438,3	1.278,9	6.994,6
Employed persons	11.361,3	10.797,4	298,0	266,0
Unemployed persons	1.240,6	342,9	659,6	238,1
Inactive	7.035,4	292,5	320,6	6.422,3
Not classifiable	74,4	5,4	0,7	68,2
FEMALES				
Total	20.888,8	9.827,6	1.576,3	9.484,9
Employed persons	9.834,7	9.150,1	340,1	344,5
Unemployed persons	1.498,3	348,9	786,4	363,1
Inactive	9.478,8	324,8	446,5	8.707,5
Not classifiable	77,0	3,8	3,3	69,8

Weighting factors of current quarter (backward analysis)

Results by autonomous community and autonomous city

(Continues)

	Current quarter	Variation on previous quarter		Variation on same quarter, previous year	
		Difference	Percentage	Difference	Percentage
		1. Population aged 16 years and over			
TOTAL	40.600,5	207,9	0,51	631,4	1,58
Andalucía	7.199,4	27,1	0,38	87,3	1,23
Aragón	1.111,7	3,6	0,33	16,2	1,48
Asturias, Principado de	886,8	2,0	0,23	4,6	0,52
Balears, Illes	1.065,8	5,1	0,48	26,1	2,51
Canarias	1.990,5	4,7	0,24	32,6	1,66
Cantabria	504,3	1,5	0,30	3,8	0,76
Castilla y León	2.039,0	4,2	0,21	9,9	0,49
Castilla-La Mancha	1.726,9	7,2	0,42	14,3	0,84
Cataluña	6.544,3	53,2	0,82	146,1	2,28
Comunitat Valenciana	4.397,6	31,3	0,72	103,9	2,42
Extremadura	890,8	0,3	0,04	0,5	0,06
Galicia	2.352,9	4,1	0,18	9,9	0,42
Madrid, Comunidad de	5.801,1	45,4	0,79	123,8	2,18
Murcia, Región de	1.280,5	6,4	0,50	24,0	1,91
Navarra, Comunidad Foral de	553,9	2,1	0,38	5,5	1,00
País Vasco	1.857,3	8,8	0,48	18,0	0,98
Rioja, La	268,7	1,0	0,38	3,4	1,29
Ceuta	65,3	-0,1	-0,08	0,4	0,69
Melilla	63,5	-0,3	-0,39	1,1	1,80

2. Active population

TOTAL	24.121,0	301,9	1,27	595,1	2,53
Andalucía	4.151,6	26,9	0,65	102,7	2,54
Aragón	646,9	-3,6	-0,56	4,5	0,71
Asturias, Principado de	458,3	12,3	2,76	17,0	3,86
Balears, Illes	716,4	26,8	3,89	22,2	3,20
Canarias	1.177,0	-1,9	-0,16	25,2	2,19
Cantabria	281,2	2,7	0,99	2,7	0,96
Castilla y León	1.126,1	15,1	1,35	4,2	0,37
Castilla-La Mancha	1.023,7	-0,1	-0,01	9,1	0,90
Cataluña	4.061,8	71,0	1,78	136,7	3,48
Comunitat Valenciana	2.631,4	79,5	3,11	98,3	3,88
Extremadura	505,0	2,8	0,56	4,6	0,93
Galicia	1.261,6	11,6	0,93	12,9	1,04
Madrid, Comunidad de	3.672,7	21,9	0,60	101,5	2,84
Murcia, Región de	774,9	16,4	2,16	25,1	3,35
Navarra, Comunidad Foral de	329,6	4,9	1,51	8,1	2,52
País Vasco	1.063,3	10,6	1,01	16,8	1,60
Rioja, La	161,3	2,8	1,76	3,7	2,37
Ceuta	41,6	1,5	3,73	1,0	2,46
Melilla	36,7	0,5	1,51	-1,4	-3,71

* Data below 5000 are subject to strong variations, due to sampling error

Results by autonomous community and autonomous city

(Conclusion)

	Current quarter	Variation on previous quarter		Variation on same quarter, previous year	
		Difference	Percentage	Difference	Percentage
3. Employed persons					
TOTAL	21.265,9	209,1	0,99	720,1	3,51
Andalucía	3.376,3	-3,8	-0,11	95,7	2,92
Aragón	596,6	2,0	0,33	12,6	2,16
Asturias, Principado de	398,3	-1,0	-0,26	13,6	3,53
Balears, Illes	675,5	35,2	5,50	21,4	3,28
Canarias	997,8	-1,3	-0,13	50,2	5,30
Cantabria	260,1	4,3	1,69	5,6	2,20
Castilla y León	1.019,4	9,1	0,90	-2,5	-0,25
Castilla-La Mancha	902,4	11,8	1,33	34,0	3,92
Cataluña	3.716,4	62,4	1,71	156,5	4,40
Comunitat Valenciana	2.321,3	80,7	3,60	130,0	5,93
Extremadura	421,7	5,1	1,22	0,6	0,14
Galicia	1.144,4	14,2	1,25	30,6	2,75
Madrid, Comunidad de	3.285,9	-15,7	-0,48	119,3	3,77
Murcia, Región de	671,1	6,2	0,94	30,3	4,74
Navarra, Comunidad Foral de	299,0	2,8	0,96	6,4	2,19
País Vasco	974,8	-2,8	-0,29	15,0	1,57
Rioja, La	145,8	-0,9	-0,61	0,9	0,61
Ceuta	30,0	0,9	3,14	2,0	6,95
Melilla	29,0	-0,1	-0,35	-2,2	-6,93

4. Unemployed persons

TOTAL	2.855,2	92,7	3,36	-125,0	-4,20
Andalucía	775,2	30,7	4,12	7,0	0,91
Aragón	50,3	-5,6	-10,06	-8,0	-13,79
Asturias, Principado de	60,0	13,4	28,68	3,5	6,14
Balears, Illes	41,0	-8,4	-16,98	0,8	1,94
Canarias	179,2	-0,6	-0,33	-25,0	-12,24
Cantabria	21,0	-1,6	-6,97	-2,9	-12,22
Castilla y León	106,6	6,0	5,92	6,7	6,71
Castilla-La Mancha	121,3	-11,9	-8,93	-24,9	-17,02
Cataluña	345,4	8,6	2,56	-19,8	-5,42
Comunitat Valenciana	310,2	-1,2	-0,38	-31,7	-9,27
Extremadura	83,4	-2,3	-2,66	4,1	5,11
Galicia	117,2	-2,5	-2,13	-17,7	-13,11
Madrid, Comunidad de	386,8	37,6	10,78	-17,8	-4,40
Murcia, Región de	103,8	10,1	10,83	-5,2	-4,81
Navarra, Comunidad Foral de	30,6	2,1	7,24	1,7	5,91
País Vasco	88,5	13,4	17,88	1,7	2,01
Rioja, La	15,5	3,7	31,15	2,8	(:)
Ceuta	11,6	0,6	5,32	-1,0	(:)
Melilla	7,7	0,6	9,23	0,7	(:)

* Data below 5,000 are subject to strong variations, due to sampling error

Results by autonomous community and autonomous city

(Absolute figures in thousands and rates in percentage)

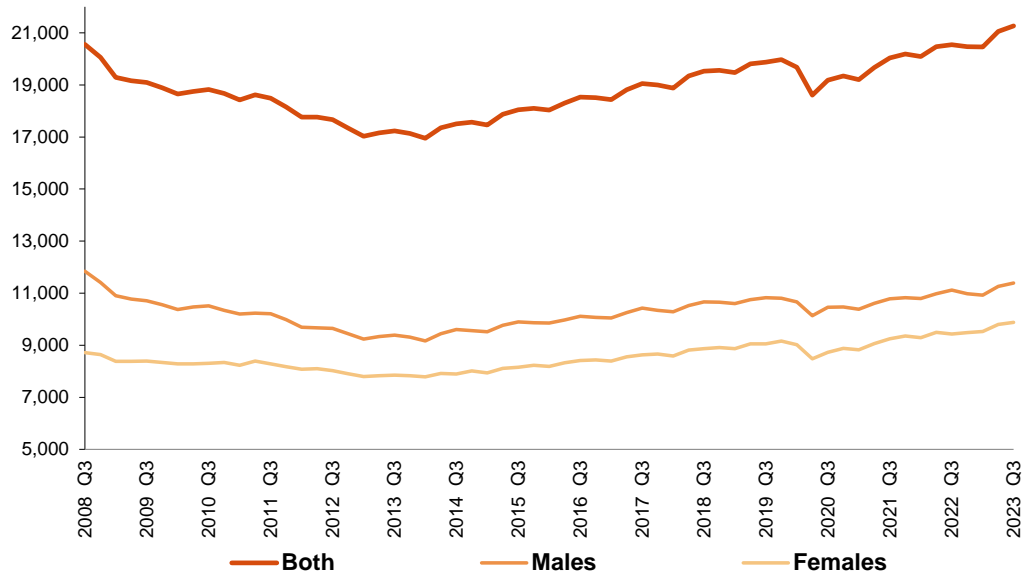
5. Employed and unemployed persons by sex. Activity and unemployment rates

	Both sexes				Males				Females			
	Employed persons	Unemployed persons	Activity rate	Unem. rate	Employed persons	Unemployed persons	Activity rate	Unem. Rate	Employed persons	Unemployed persons	Activity rate	Unem. Rate
TOTAL	21.265,9	2.855,2	59,41	11,84	11.387,7	1.301,8	64,41	10,26	9.878,2	1.553,4	54,70	13,59
Andalucía	3.376,3	775,2	57,67	18,67	1.861,1	361,8	63,26	16,28	1.515,2	413,4	52,33	21,44
Aragón	596,6	50,3	58,19	7,77	321,8	22,1	63,29	6,42	274,8	28,2	53,31	9,30
Asturias, Principado de	398,3	60,0	51,68	13,09	205,2	26,6	55,07	11,48	193,1	33,4	48,62	14,74
Baleares, Illes	675,5	41,0	67,22	5,72	354,3	21,0	71,04	5,60	321,1	19,9	63,46	5,84
Canarias	997,8	179,2	59,13	15,23	542,8	82,6	64,11	13,21	455,0	96,6	54,34	17,52
Cantabria	260,1	21,0	55,76	7,48	139,2	9,1	60,80	6,15	120,9	11,9	51,03	8,97
Castilla y León	1.019,4	106,6	55,23	9,47	555,4	48,5	60,34	8,03	464,1	58,1	50,30	11,13
Castilla-La Mancha	902,4	121,3	59,28	11,85	516,9	52,7	65,87	9,25	385,5	68,6	52,67	15,11
Cataluña	3.716,4	345,4	62,07	8,50	1.936,5	170,4	66,52	8,09	1.779,9	175,0	57,89	8,95
Comunitat Valenciana	2.321,3	310,2	59,84	11,79	1.255,0	136,4	65,18	9,80	1.066,3	173,8	54,80	14,02
Extremadura	421,7	83,4	56,70	16,50	238,0	38,2	63,03	13,82	183,7	45,2	50,57	19,74
Galicia	1.144,4	117,2	53,62	9,29	596,6	54,9	57,98	8,43	547,8	62,2	49,62	10,20
Madrid, Comunidad de	3.285,9	386,8	63,31	10,53	1.711,4	159,6	68,01	8,53	1.574,5	227,2	59,07	12,61
Murcia, Región de	671,1	103,8	60,52	13,39	374,4	48,1	66,42	11,39	296,7	55,7	54,69	15,79
Navarra, Comunidad Foral de	299,0	30,6	59,51	9,29	158,3	15,7	63,83	9,02	140,7	14,9	55,31	9,59
País Vasco	974,8	88,5	57,25	8,32	509,7	39,0	61,52	7,11	465,1	49,5	53,30	9,61
Rioja, La	145,8	15,5	60,02	9,61	77,7	6,3	63,99	7,50	68,1	9,2	56,24	11,91
Ceuta	30,0	11,6	63,63	27,79	17,7	4,7	67,62	21,07	12,3	6,8	59,52	35,66
Melilla	29,0	7,7	57,77	20,89	15,7	4,0	63,80	20,27	13,3	3,7	52,09	21,61

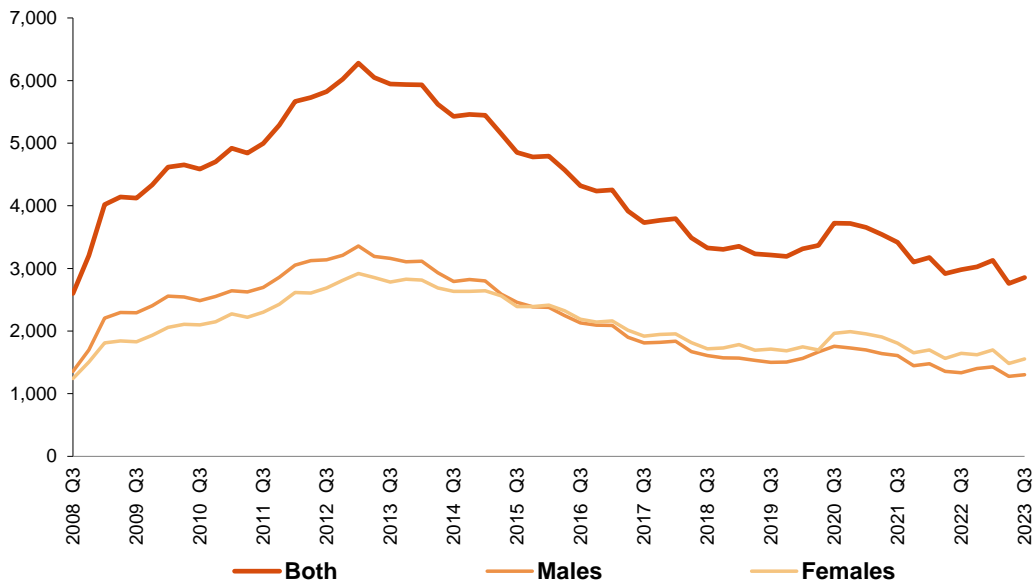
* Data below 5,000 are subject to strong variations, due to sampling errors

Employed and Unemployed by sex EAPS
Third Quarter 2023

Employed. Thousands



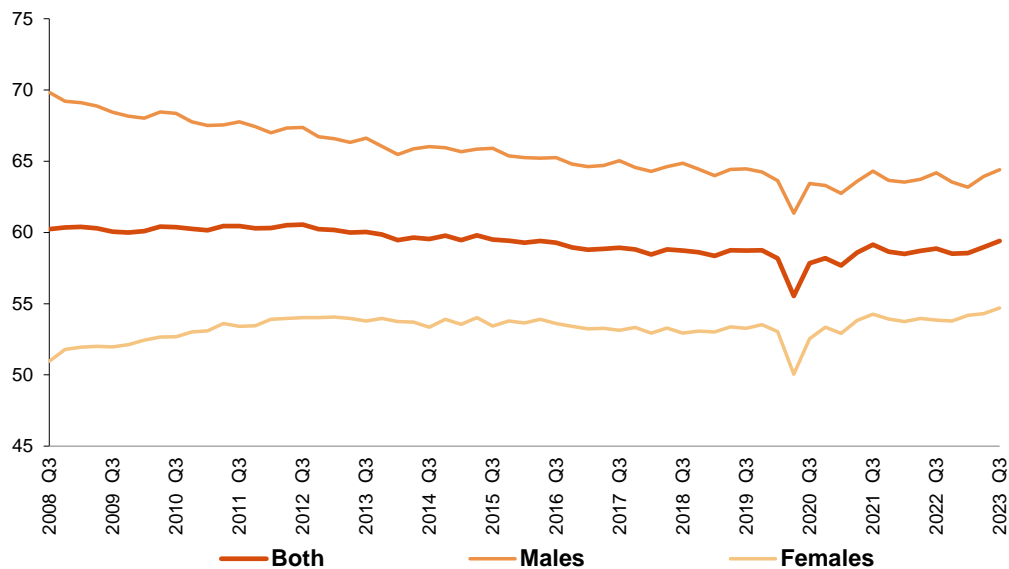
Unemployed. Thousands



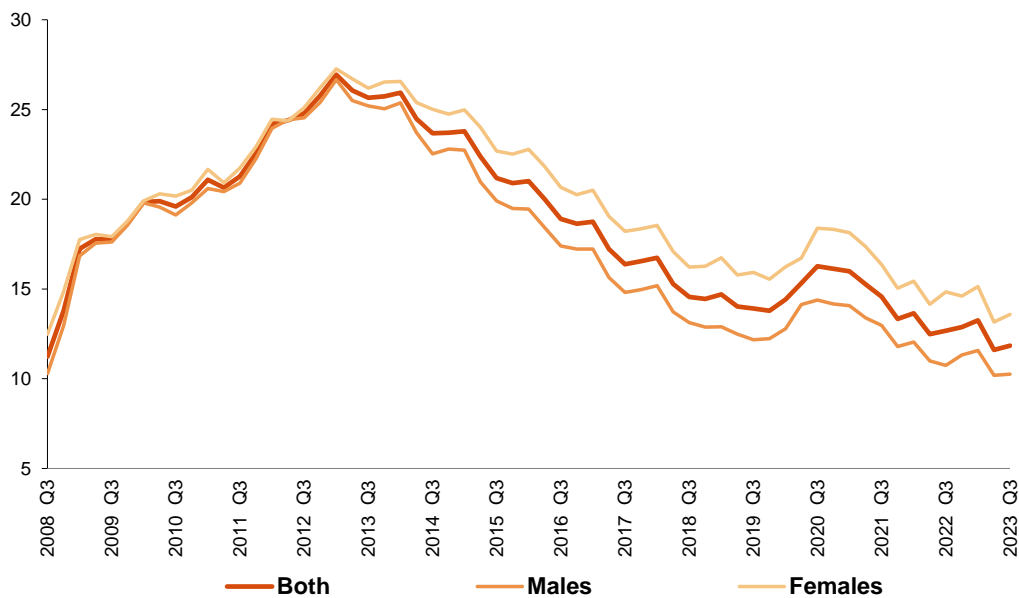
Activity and unemployment rates by sex
Third Quarter 2023

EAPS

Activity rate. Percentage



Unemployment rate. Percentage

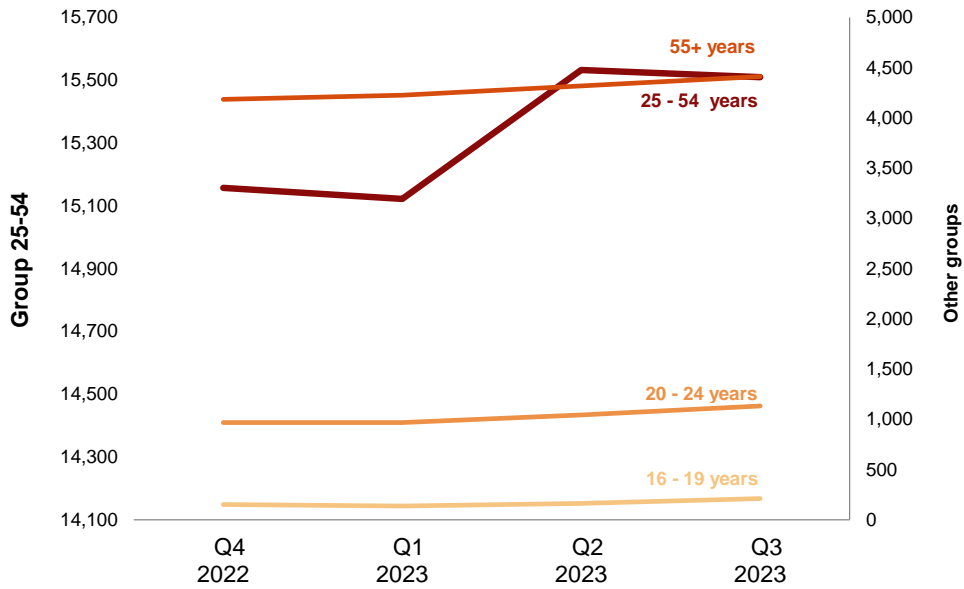


Employment by age

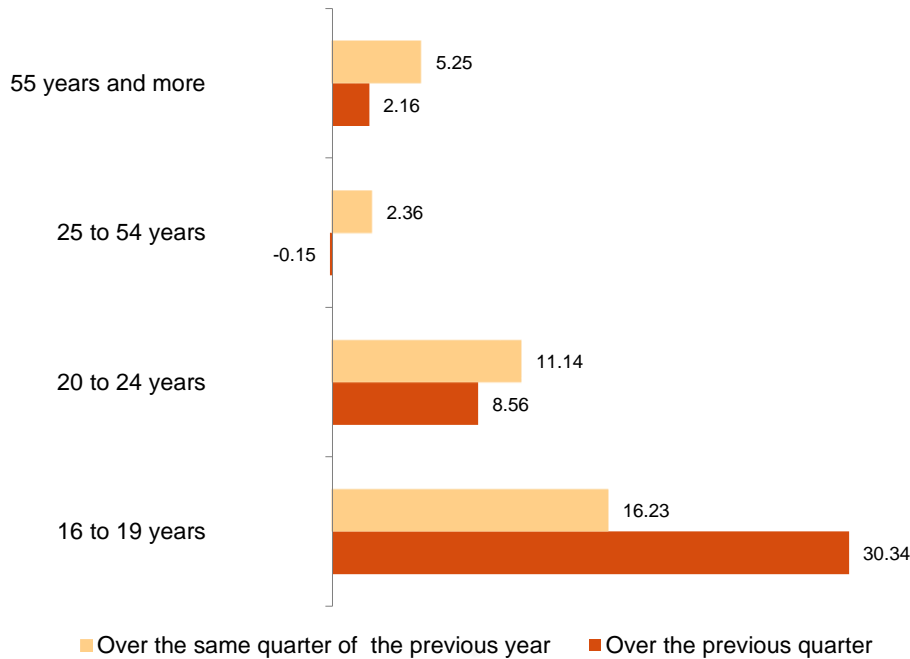
Third Quarter 2023

EAPS

Employment. Thousands



Variation of employment. Thousands

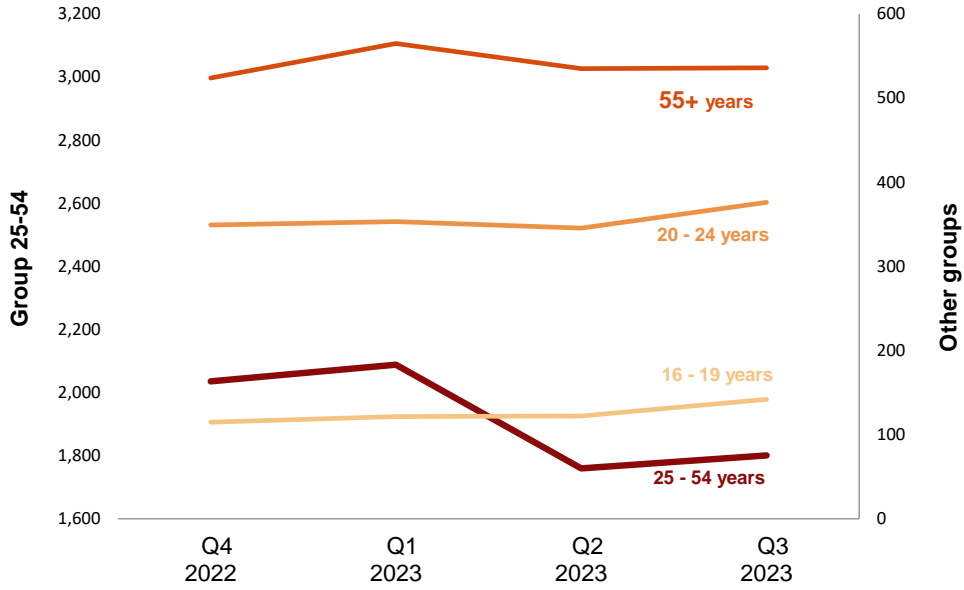


Unemployment by age

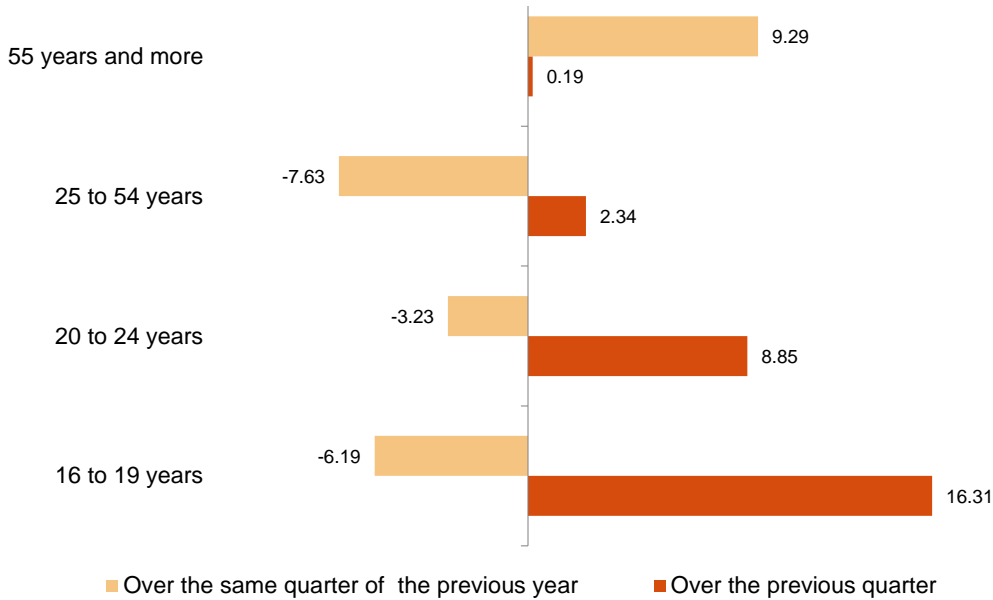
Third Quarter 2023

EAPS

Unemployment. Thousands



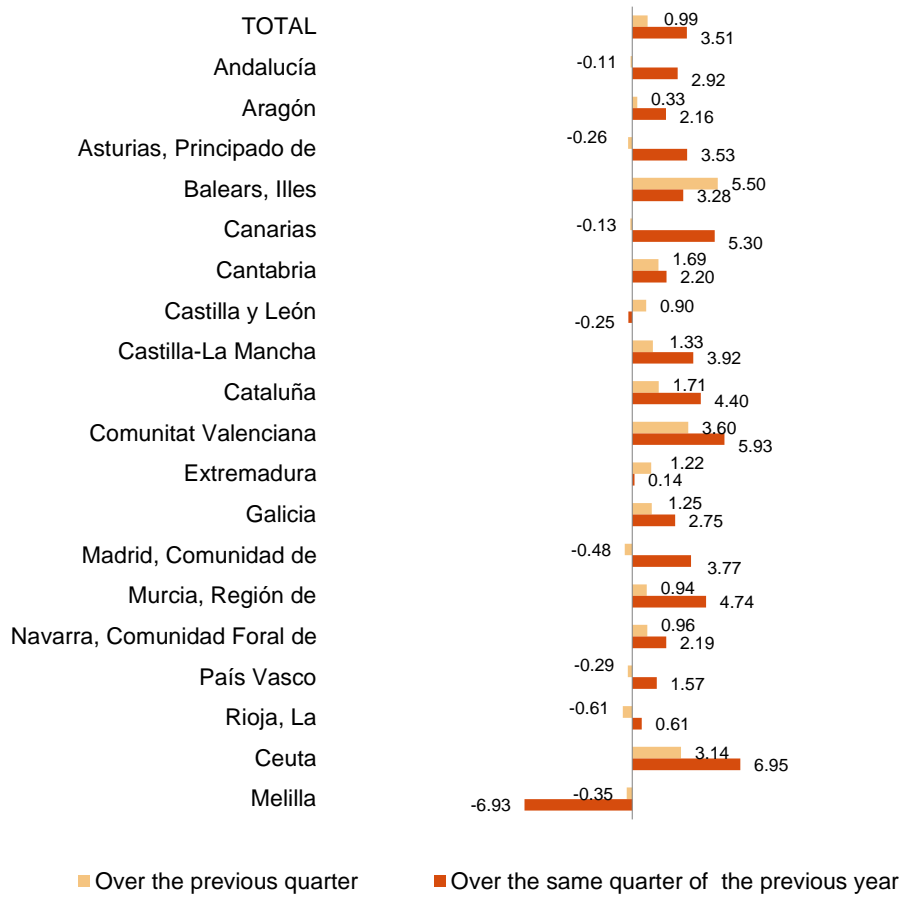
Variation of unemployment. Thousands



Third Quarter 2023

EAPS

Variation of employment. Percentage



Unemployment rate Percentage
(Spain= 11.84)

