

25 January 2008

Economically Active Population Survey (EAPS) Fourth quarter of 2007

Main results

- The number of employed persons stands at 20,476,900 in the fourth quarter of 2007 (33,700 fewer than in the previous quarter). 475,100 jobs have been created during the last year. The interannual employment growth rate stands at 2.38%.
- The activity rate is 59.12%, practically the same as the rate registered in the third quarter of 2007. For men, the rate is 69.23% (37 hundredths lower than the previous month), while the rate for women is 49.37% (almost four tenths higher).
- The number of unemployed persons increases by 135,700 persons as compared with the previous quarter, standing at 1,927,600. The unemployment rate rises almost six tenths to 8.60%. The number of unemployed persons has increased by 117,000 persons during the last 12 months.
- The total number of wage earners rises by 6,800 persons with respect to the previous quarter, and stands at 16,876,500. The number of wage earners has increased by 410,400 persons in the past year. Wage earners with a permanent contract increase by 177,000 persons this quarter, while temporary wage earners decrease by 170,200 persons. The temporary employment rate stands at 30.92%, somewhat more than one point lower than the rate from the previous quarter (31.94%).
- The Autonomous Communities with the greatest increases in employment this quarter are Cataluña (22,000), Comunitat Valenciana (18,300) and País Vasco (9,500). The greatest increases are recorded in Illes Balears (42,000 fewer employed persons) and in Galicia (19,000).
- The most pronounced increases in unemployment this quarter are registered in Andalucía (59,900 more unemployed persons), Illes Balears (24,000), Madrid (13,100), Extremadura (11,500) and Comunitat Valenciana (9,800). Drops in unemployment are produced in Cataluña (3,900 more unemployed persons), País Vasco (2,900) and Cantabria (2,600).

The number of active persons in Spain stands at 22,404,500 persons.

The total number of active persons for the fourth quarter of 2007 was 22,404,500, with an increase of 102,000 persons as compared with the figure from the previous quarter. The activity rate was 59.12%, practically the same as that registered the previous quarter.

The number of active women increased by 116,200 persons this quarter, standing at 9,528,100. The female activity rate increased almost four tenths and reached 49.37%. On the other hand, the number of active men stood at 12,876,300, with a decrease of 14,200 persons. The male activity rate decreased 37 hundredths this quarter and stood at 69.23%.

During the last 12 months, the number of active persons increased by 592,000 persons, of whom 310,800 were women.

The activity rate for the foreign population (75.33%) dropped 85 hundredths this quarter, while that for the Spanish population rose six hundredths to 57.00%. The difference between the two activities rates was more than 18 points. To a large extent, the age structure of the foreign nationals explained this difference.

Employment decreases by 33,700 persons this quarter, to 20,476,900.

The number of employed persons stood at 20,476,900 persons, 33,700 fewer than in the third quarter. In the last 12 months, the number of employed persons increased by 475,100 persons.

The interannual employment growth rate was 2.38%, seven tenths lower than the previous quarter (3.09%).

Employment grew among women (58,800 more employed persons than the previous quarter) and dropped among men (92,500 fewer employed persons). In terms of interannual evolution, there were 309,300 more women and 165,800 more men employed.

The number of employed Spaniards decreased by 74,400 persons during the last three months, while the number of employed foreign nationals increased by 40,700 persons. 14.10% of the total employed persons in the fourth quarter of 2007 were foreign nationals.

Increases in employment took place in age groups over 30 years old, fundamentally in the group aged 35 to 39 (59,400 more employed persons), the group aged 30 to 34 (37,700) and the group aged 55 and older (35,600). The youngest age groups registered drops in the number of employed persons (for the group aged 16 to 19 there were 87,400 fewer employed persons, for the group aged 20 to 24 there were 72,200 fewer, and for the group aged 25 to 29 there were 41,000 fewer).

The number of employed persons increased in agriculture (by 20,400 persons) and industry (20,200 more persons). Conversely, employment decreased in services and construction (50,300 and 24,000 fewer employed persons, respectively).

Regarding the evolution during the last 12 months, the interannual growth rate of employment in services fell to 3.51% from the 4.15% recorded the previous quarter. In construction, interannual growth of employment decreased to 2.68% from 4.92%. Agriculture recorded a negative interannual rate of 1.74% as compared with the likewise negative interannual variation of 3.04% from the previous quarter. In industry, employment showed a drop of 1.23%, compared to the negative rate of 0.89% registered in the third quarter.

The number of wage earners with permanent contracts increases by 177,000 persons

The total number of wage earners in the fourth quarter of 2007 was 16,876,500, with an increase of 6,800 persons with respect to the previous quarter. The number of wage earners with a permanent contract increased by 177,000, standing at 11,658,200 persons. Wage earners with a temporary contract decreased by 170,200 persons, to a total of 5,218,400.

The temporary employment rate stood at 30.92%, more than one point below the rate from the previous quarter (31.94%).

In the last 12 months, the total number of wage earners increased by 410,400 persons. Wage earners with a permanent contract increased by 760,800 persons, while wage earners with a temporary contract decreased by 350,400 persons.

The salary rate rose 17 hundredths, standing at 82.42%.

In terms of **working hours**, 2,383,100 employed part-time workers were registered during this quarter (1,916,900 women and 466,300 men). With respect to the previous quarter, the number of persons working part-time increased by 106,400, of whom 93,100 were women.

On the other hand, full-time employed persons decreased by 140,100 compared to the previous quarter. The number of women working full-time decreased by 34,300, and the number of men by 105,800.

The percentage of part-time employed persons was 11.64%, indicating an increase of 0.54 points as compared with the percentage from the third quarter (11.10%).

Unemployment grows by 135,700 persons, and the unemployment rate stands at 8.60%

Unemployment in the fourth quarter of 2007 increased by 135,700 persons. The total number of unemployed persons in Spain was 1,927,600, with an increase of 117,000 persons during the last 12 months.

The unemployment rate increased 57 hundredths and stood at 8.60%.

The growth in unemployment affected men (78,300 more unemployed persons) more than women (57,400 more). The unemployment rate for men was 6.83%, which was 62 hundredths more than in the third quarter of the year. The rate for women was 11.00%, having risen 47 hundredths.

Unemployment grew by 108,000 persons among Spaniards and by 27,700 persons among foreign nationals. The unemployment rate for Spaniards was 7.95% (55 hundredths higher than the previous quarter) while the rate for foreign nationals was 12.37% (six tenths higher).

Regarding age, unemployment grew for persons aged 25 to 54 years old (138,400 more unemployed persons) and for persons aged 55 and old (7,700 more). Among persons less than 25 years of age, unemployment dropped by 10,400 persons.

Unemployment rose in all sectors during this quarter. In services, the number of unemployed persons grew by 49,000 persons, in construction by 40,500 persons, in agriculture by 15,200 persons, and in industry by 1,500 persons. The number of unemployed persons who lost their jobs over one year ago increased by 54,000 persons. Unemployment decreased as compared with the third quarter among persons seeking their first job (24,500 fewer unemployed persons).

The unemployment rate for the household reference person rose 44 hundredths and stood at 6.46%. The rate for the spouse or partner increased 37 hundredths to 7.62%, and the rate for sons or daughters increased 1.02 points to 13.88%.

The number of households in which all active members are unemployed increases by 62,400 persons

The number of households in which all active members were employed stood at 10,695,400, that is, 2,200 fewer than in the third quarter and 235,700 more than during the same period of the previous year.

The number of households in which all active members were unemployed increased as compared with the previous quarter by 62,400, and over the last 12 months by 46,800.

Mobility as related to activity

Regarding quarter-on-quarter mobility as related to activity, the proportion of unemployed persons who had been employed three months prior was 30.97%, indicating a growth of 85 hundredths on the figure registered the third quarter of the year.

The percentage of employed persons who had also been employed the previous quarter stood at 92.99%, a rate seven hundredths lower than three months ago.

The percentage of employed persons who had been unemployed during the previous quarter was 3.08%, that is, 19 hundredths more than in the previous quarter. The percentage of employed persons who had been inactive was 3.92%, 13 hundredths lower than the third quarter of 2007.

The percentage of inactive persons who had been employed during the previous quarter rose 35 hundredths to 5.56%.

The probability of remaining unemployed was 38.03% (almost eight tenths higher than the previous quarter), while the probability of remaining inactive was 91.69%, almost the same as three months ago.

Results by Autonomous Communities and Provinces

The greatest increases in the number of **active persons** this quarter were recorded in Andalucía (52,400 more active persons), Comunitat Valenciana (28,100), Cataluña (18,100) and Madrid (15,200).

Decreases in the number of active persons were registered in Illes Balears (18,000 fewer active persons), Galicia (10,000) and Castilla y León (8,400).

In terms of **employment**, the Autonomous Communities with the most significant growth in absolute values as compared with the previous quarter were Cataluña (22,000 more employed persons), Comunitat Valenciana (18,300) and País Vasco (9,500).

The most important drops in employed persons during the fourth quarter of 2007 were recorded in Illes Balears (42,000 fewer employed persons), Galicia (19,000) Andalucía and Castilla y León (7,500 fewer employed persons each) and Extremadura (7,400).

During the last year, employment increased in all Autonomous Communities. Cataluña (95,300 more employed persons), Andalucía (69,200), Comunitat Valenciana (56,900) and Madrid (42,800) registered the most noteworthy increases.

As for the evolution of **unemployment**, the greatest rises this quarter were recorded in Andalucía (59,900 more unemployed persons), Illes Balears (24,000), Madrid (13,100), Extremadura (11,500), Comunitat Valenciana (9,800), Castilla-La Mancha (9,200) and Galicia (9,000). In contrast, Cataluña (3,900 fewer unemployed persons), País Vasco (2,900) and Cantabria (2,600) presented the greatest drops.

In the last twelve months, the Autonomous Communities that most reduced the number of unemployed persons were País Vasco (10,400 fewer unemployed persons), Galicia (6,000), Castilla y León (4,300) and Asturias (4,000).

In contrast, the greatest increases in the number of unemployed persons in 2007 were observed in Andalucía (85,500 more unemployed persons), Comunitat Valenciana (20,000), Illes Balears (16,700) and Extremadura (10,000).

Navarra (4.27%), Cantabria (4.63%), Aragón (5.09%), Rioja (5.63%) and País Vasco (5.73%) were the Autonomous Communities with the lowest **unemployment rates** in the fourth quarter of 2007.

The highest unemployment rates were recorded in Extremadura (14.65%) and Andalucía (13.99%).

The lowest female unemployment rates were observed in Navarra (4.78%), Aragón (6.53%) and Cantabria (6.70%).

Navarra, Madrid and Cataluña offered the least diverging unemployment rates by sex, with a difference of less than 2.4 points. On the other hand, the Autonomous Communities with the most diverging female and male unemployment rates were Extremadura (11.95 points) and Andalucía (8.66 points).

By province, Cádiz (17.61%), Huelva (16.71%), Badajoz (15.29) and Córdoba (15.03%) registered the highest unemployment rates this quarter.

The Autonomous Communities with the highest **activity rates** during the fourth quarter of 2007 were Madrid (63.90%), Illes Balears (63.14%), Cataluña (62.80%), Canarias (60.65%), Murcia (60.56%), Comunitat Valenciana (60.49%) and Navarra (60.31%).

The lowest activity rates were recorded in Asturias (50.84%), Extremadura (53.42%), Castilla y León (53.83%) and Galicia (54.21%).

By province, in addition to Madrid, Illes Balears, Murcia and Navarra, activity rates above 60% were registered in Almería (65.28%), Las Palmas (63.42%), Barcelona (63.30%), Girona (63.24%), Castellón (63.05%), Valencia (62.47%), Tarragona (62.22%), Guipúzcoa (60.85%), Toledo (60.34%), Álava (60.31%) and Valladolid (60.31%).

For further information see [INEbase-**www.ine.es/en/welcome_en.htm**](http://INEbase-www.ine.es/en/welcome_en.htm) All press releases at: www.ine.es/en/prensa/prensa_en.htm

Press office: Telephone: 91 583 93 63 / 94 08 – Fax: 91 583 90 87 - gprensa@ine.es

Information area: Telephone: 91 583 91 00 – Fax: 91 583 91 58 – www.ine.es/infoine

Methodological note

General characteristics

The Economically Active Population Survey is a continuous sample-based study, aimed at family dwellings, and which has been conducted since 1964.

3,588 census sections are chosen for this survey, among the more than 30,000 into which Spain is divided. On average, 18 households are surveyed in each of them, except in Barcelona, Madrid, Sevilla, Valencia and Zaragoza, where the number of interviews is 22. Thus, the sample size is approximately 65,000 dwellings, providing information on some 180,000 persons. These data are collected through personal and telephone interviews, conducted by National Statistics Institute workers, attached to the provincial delegations thereof. The information is carefully filtered and processed using computer means. Results are obtained within the month after the end of the reference quarter for the data.

Main definitions

Active persons: persons aged 16 or over who, during the week of reference (the week prior to that when the interview is held), supplied labour for the production of economic goods and services or were available to do so and carried out actions to incorporate themselves into said production. They are divided into employed and unemployed persons.

Employed persons: persons aged 16 or over who, during the week of reference, worked for at least one hour, in exchange for payment (salary, wage, business benefit, etcetera) in cash or in kind. Persons who, having a job, had been temporarily absent from it due to illnesses, vacations, etcetera are also employed persons.

Employed persons are classified, considering their professional status, as non-wage earners (employers, businessmen without wage earners, and independent workers, cooperative members, family assistance) and wage earners (public or private).

Considering the length of the working day, employed persons are classified as full-time and part-time workers. The usual working week cannot be shorter than 30 hours in the first case, nor exceed 35 hours in the second.

Wage earners are classified into permanent and temporary. For the latter, the end of their contract or work relationship is set by means of objective conditions, such as the expiration of a certain period of time, the completion of a specific task, etcetera.

A significant category within employment is that of **time-related underemployment**, defined in the 16th International Labour Statisticians Conference (Geneva, 1998). The EAPS considers persons suffering time-related underemployment as employed persons who would like to work more hours, who are available to work more hours and whose effective working hours in the reference week are less than the number of hours usually worked by employed persons working full-time in the same branch of activity as that in which the underemployed person develops his/her main job.

Unemployed persons: Individuals, aged 16 or over who, during the reference week, were jobless, available for work, and actively looking for a job. Persons who might have already

found a job and are waiting to start, are also considered as unemployed, provided that they verify the first two conditions.

According to European Commission Regulation 1897/2000, the following are considered as active search methods in the four weeks prior to the interview:

- Being in contact with a public employment office for the purpose of finding work, whatever part they play in the initiative (the renewal of registration due to purely administrative reasons does not constitute active planning).
- Being in contact with a private office (temporary employment office, specialised contracting company, ...) with the objective of finding work.
- Having sent an application directly to employers.
- Having searched via personal relations and trade unions,
- Having advertised oneself or responded to newspaper advertisements.
- Having studied employment offers.
- Having taken part in a test, public exam or interview in the framework of a contracting procedure.
- Having looked for land, premises or material.
- Having taken steps to obtain permits, licences or financial resources.

Inactive persons: Individuals aged 16 or over not included in any of the above categories.

Economically Active Population Survey Fourth Quarter 2007

National results

	Current quarter	Variation on previous quarter		Variation on same quarter, previous year	
		Difference	Percentage	Difference	Percentage
1. Population aged 16 years and over by sex and labour status					
BOTH SEXES					
Population aged 16 years and over	37.896,9	163,0	0,43	661,4	1,78
Active population	22.404,5	102,0	0,46	592,0	2,71
- Employed	20.476,9	-33,7	-0,16	475,1	2,38
- Unemployed	1.927,6	135,7	7,57	117,0	6,46
Inactive	15.492,4	61,0	0,40	69,3	0,45
Activity rate	59,12	0,01	-	0,54	-
Unemployment rate	8,60	0,57	-	0,30	-
Population aged 16 to 64 years	30.551,6	135,4	0,45	549,2	1,83
Activity rate (16-64)	72,84	0,00	-	0,61	-
Unemployment rate (16-64)	8,66	0,57	-	0,31	-
Employment rate (16-64)	66,53	-0,41	-	0,33	-
MALES					
Population aged 16 years and over	18.598,4	79,6	0,43	343,4	1,88
Active population	12.876,3	-14,2	-0,11	281,3	2,23
- Employed	11.997,1	-92,5	-0,77	165,8	1,40
- Unemployed	879,2	78,3	9,78	115,5	15,12
Inactive	5.722,0	93,8	1,67	62,1	1,10
Activity rate	69,23	-0,37	-	0,24	-
Unemployment rate	6,83	0,62	-	0,76	-
Population aged 16 to 64 years	15.460,5	66,7	0,43	290,7	1,92
Activity rate (16-64)	82,61	-0,47	-	0,22	-
Unemployment rate (16-64)	6,88	0,62	-	0,79	-
Employment rate (16-64)	76,93	-0,95	-	-0,45	-
FEMALES					
Population aged 16 years and over	19.298,5	83,4	0,43	318,0	1,68
Active population	9.528,1	116,2	1,23	310,8	3,37
- Employed	8.479,8	58,8	0,70	309,3	3,79
- Unemployed	1.048,3	57,4	5,79	1,5	0,14
Inactive	9.770,4	-32,8	-0,33	7,2	0,07
Activity rate	49,37	0,39	-	0,81	-
Unemployment rate	11,00	0,47	-	-0,36	-
Population aged 16 to 64 years	15.091,2	68,7	0,46	258,4	1,74
Activity rate (16-64)	62,82	0,49	-	1,00	-
Unemployment rate (16-64)	11,05	0,48	-	-0,35	-
Employment rate (16-64)	55,88	0,14	-	1,11	-

2. Spanish population¹ aged 16 years and over by labour status

SPANISH POPULATION AGED 16 YEARS AND OVER	33.523,1	24,7	0,07	96,6	0,29
Active population	19.109,7	33,6	0,18	254,4	1,35
- Employed	17.589,9	-74,4	-0,42	189,8	1,09
- Unemployed	1.519,9	108,0	7,65	64,6	4,44
Inactive	14.413,3	-8,9	-0,06	-157,9	-1,08
Activity rate	57,00	0,06	-	0,60	-
Unemployment rate	7,95	0,55	-	0,24	-

¹ including dual nationality

National results

(Continuation)

	Current quarter	Variation on previous quarter		Variation on same quarter, previous year	
		Difference	Percentage	Difference	Percentage
3. Foreign population aged 16 years and over by labour status					
FOREIGN POPULATION AGED 16 YEARS AND OVER	4.373,8	138,3	3,27	564,8	14,83
Active population	3.294,7	68,4	2,12	337,6	11,42
- Employed	2.887,0	40,7	1,43	285,3	10,96
- Unemployed	407,7	27,7	7,29	52,3	14,73
Inactive	1.079,0	69,9	6,93	227,2	26,67
Activity rate	75,33	-0,85	-	-2,31	-
Unemployment rate	12,37	0,60	-	0,36	-

4. Employed by sex, age group and economic sector

BOTH SEXES	20.476,9	-33,7	-0,16	475,1	2,38
16 to 19 years	356,7	-87,4	-19,69	-5,3	-1,45
20 to 24 years	1.577,2	-72,2	-4,38	-59,7	-3,65
25 to 29 years	2.818,3	-41,0	-1,43	-33,7	-1,18
30 to 34 years	3.245,9	37,7	1,17	110,6	3,53
35 to 39 years	3.021,5	59,4	2,00	114,7	3,95
40 to 44 years	2.774,1	8,1	0,29	81,2	3,01
45 to 49 years	2.435,8	17,3	0,72	70,5	2,98
50 to 54 years	1.935,2	8,8	0,46	108,2	5,92
55 and over	2.312,4	35,6	1,56	88,6	3,99
MALES	11.997,1	-92,5	-0,77	165,8	1,40
16 to 19 years	226,9	-48,8	-17,70	-7,0	-2,99
20 to 24 years	881,2	-41,8	-4,53	-47,5	-5,11
25 to 29 years	1.558,8	-28,5	-1,79	-19,8	-1,25
30 to 34 years	1.861,1	13,8	0,75	58,8	3,26
35 to 39 years	1.758,4	-0,2	-0,01	45,8	2,67
40 to 44 years	1.620,0	4,3	0,26	45,9	2,91
45 to 49 years	1.414,6	0,0	0,00	12,2	0,87
50 to 54 years	1.165,2	0,6	0,05	33,7	2,98
55 and over	1.511,0	8,0	0,53	43,6	2,97
FEMALES	8.479,8	58,8	0,70	309,3	3,79
16 to 19 years	129,8	-38,6	-22,94	1,7	1,36
20 to 24 years	695,9	-30,4	-4,19	-12,2	-1,72
25 to 29 years	1.259,4	-12,5	-0,98	-13,9	-1,09
30 to 34 years	1.384,8	23,8	1,75	51,8	3,88
35 to 39 years	1.263,1	59,6	4,95	68,9	5,77
40 to 44 years	1.154,1	3,9	0,34	35,3	3,16
45 to 49 years	1.021,2	17,3	1,73	58,3	6,05
50 to 54 years	770,0	8,2	1,08	74,4	10,70
55 and over	801,4	27,6	3,57	45,0	5,95
TOTAL EMPLOYED	20.476,9	-33,7	-0,16	475,1	2,38
Agriculture	905,8	20,4	2,31	-16,0	-1,74
Industry	3.279,1	20,2	0,62	-40,7	-1,23
Construction	2.693,5	-24,0	-0,88	70,3	2,68
Services	13.598,5	-50,3	-0,37	461,5	3,51

National results

(Continuation)

	Current quarter	Variation on previous quarter		Variation on same quarter, previous year	
		Difference	Percentage	Difference	Percentage

5. Employed by professional status, type of contract and working hours

TOTAL EMPLOYED	20.476,9	-33,7	-0,16	475,1	2,38
Self-employed workers	3.593,2	-39,9	-1,10	69,0	1,96
- Employers	1.136,3	-5,4	-0,47	48,5	4,46
- Independent workers	2.186,0	-27,1	-1,23	87,6	4,17
- Cooperatives members	68,6	-4,5	-6,16	-28,4	-29,25
- Family workers	202,3	-2,9	-1,41	-38,7	-16,06
Employees	16.876,5	6,8	0,04	410,4	2,49
- With a permanent job	11.658,2	177,0	1,54	760,8	6,98
- With a temporary job	5.218,4	-170,2	-3,16	-350,4	-6,29
Others	7,1	-0,6	-7,70	-4,3	-37,82
FULL-TIME EMPLOYED	18.093,8	-140,1	-0,77	465,6	2,64
Males	11.530,8	-105,8	-0,91	187,3	1,65
Females	6.562,9	-34,3	-0,52	278,3	4,43
PART-TIME EMPLOYED	2.383,1	106,4	4,67	9,5	0,40
Males	466,3	13,3	2,93	-21,5	-4,40
Females	1.916,9	93,1	5,11	31,0	1,64

6. Unemployed by sex, age group, and economic sector

BOTH SEXES	1.927,6	135,7	7,57	117,0	6,46
16 to 19 years	162,8	-2,6	-1,58	-0,8	-0,49
20 to 24 years	284,8	-7,8	-2,67	14,3	5,27
25 to 54 years	1.340,6	138,4	11,52	89,6	7,16
55 and over	139,4	7,7	5,82	13,9	11,06
MALES	879,2	78,3	9,78	115,5	15,12
16 to 19 years	83,5	2,4	2,94	4,6	5,82
20 to 24 years	134,9	0,5	0,37	22,5	20,04
25 to 54 years	583,2	69,0	13,42	76,7	15,15
55 and over	77,8	6,4	9,02	11,6	17,60
FEMALES	1.048,3	57,4	5,79	1,5	0,14
16 to 19 years	79,3	-5,0	-5,93	-5,4	-6,37
20 to 24 years	150,0	-8,3	-5,25	-8,3	-5,22
25 to 54 years	757,4	69,4	10,09	12,9	1,73
55 and over	61,6	1,2	2,04	2,2	3,78
TOTAL UNEMPLOYED	1.927,6	135,7	7,57	117,0	6,46
Agriculture	120,3	15,2	14,46	38,8	47,69
Industry	136,9	1,5	1,08	-6,3	-4,38
Construction	217,7	40,5	22,85	61,5	39,33
Services	751,3	49,0	6,98	46,4	6,58
Lost their job more than 1 year ago	515,8	54,0	11,70	-7,3	-1,39
First job seekers	185,6	-24,5	-11,65	-16,2	-8,02

National results

(Conclusion)

	Current quarter	Variation on previous quarter		Variation on same quarter, previous year	
		Difference	Percentage	Difference	Percentage

7. Unemployment rate by relationship with the reference person

TOTAL	8,60	0,57	-	0,30	-
Reference person	6,46	0,44	-	0,46	-
Spouse or partner	7,62	0,37	-	0,02	-
Child	13,88	1,02	-	0,39	-
Other relatives	11,72	2,97	-	1,72	-
Unrelated persons	7,40	-1,02	-	-0,15	-

8. Household data

TOTAL HOUSEHOLDS	16.448,4	119,7	0,73	415,6	2,59
Households with at least one active member	12.403,2	113,1	0,92	315,5	2,61
- All member employed	10.695,4	-2,2	-0,02	235,7	2,25
- All member unemployed	441,7	62,4	16,44	46,8	11,85
Households without any active population	4.045,2	6,6	0,16	100,1	2,54

Mobility according to activity in current and previous quarter

Classification in previous quarter	Classification in current quarter			
	Total	Employed	Unemployed	Inactive
BOTH SEXES				
Total	100,00	100,00	100,00	100,00
Employed	54,22	92,99	30,97	5,56
Unemployed	4,61	3,08	38,03	2,74
Inactive	41,17	3,92	31,00	91,69
MALES				
Total	100,00	100,00	100,00	100,00
Employed	65,36	95,18	37,83	6,68
Unemployed	4,17	2,35	40,41	2,83
Inactive	30,47	2,47	21,76	90,49
FEMALES				
Total	100,00	100,00	100,00	100,00
Employed	43,52	89,91	25,33	4,91
Unemployed	5,03	4,12	36,07	2,69
Inactive	51,44	5,97	38,60	92,40

Grossing up factors of current quarter (forward analysis)

Results by Autonomous Communities

	Current quarter	Variation on previous quarter		Variation on same quarter, previous year	
		Difference	Percentage	Difference	Percentage
1. Population aged 16 years and over					
TOTAL	37.896,9	163,0	0,43	661,4	1,78
Andalucía	6.600,1	24,6	0,37	116,9	1,80
Aragón	1.102,1	4,4	0,40	16,9	1,56
Asturias (Principado de)	936,9	-0,1	-0,01	0,1	0,01
Balears (Illes)	861,6	6,7	0,79	25,5	3,05
Canarias	1.688,9	9,9	0,59	40,8	2,48
Cantabria	490,4	1,3	0,26	5,2	1,08
Castilla y León	2.159,4	4,0	0,19	12,6	0,59
Castilla-La Mancha	1.644,8	11,4	0,70	41,2	2,57
Cataluña	6.049,1	25,8	0,43	117,5	1,98
Comunitat Valenciana	4.086,9	27,4	0,67	109,7	2,76
Extremadura	900,2	1,5	0,17	6,2	0,69
Galicia	2.384,6	2,7	0,11	9,6	0,40
Madrid (Comunidad de)	5.137,7	29,5	0,58	103,0	2,05
Murcia (Región de)	1.144,5	7,8	0,68	33,8	3,05
Navarra (Comunidad Foral de)	503,2	2,1	0,42	7,3	1,48
País Vasco	1.834,1	2,6	0,14	8,4	0,46
Rioja (La)	263,7	0,9	0,34	4,4	1,70
Ceuta	56,4	0,1	0,18	0,4	0,74
Melilla	52,3	0,6	1,13	1,8	3,55

2. Active population

TOTAL	22.404,5	102,0	0,46	592,0	2,71
Andalucía	3.745,0	52,4	1,42	154,8	4,31
Aragón	649,5	-3,1	-0,48	30,2	4,87
Asturias (Principado de)	476,3	0,1	0,02	10,7	2,30
Balears (Illes)	544,0	-18,0	-3,21	20,2	3,85
Canarias	1.024,3	3,8	0,37	22,5	2,24
Cantabria	276,4	-0,3	-0,13	6,7	2,50
Castilla y León	1.162,4	-8,4	-0,72	16,4	1,43
Castilla-La Mancha	925,4	2,4	0,27	37,4	4,21
Cataluña	3.799,1	18,1	0,48	100,0	2,70
Comunitat Valenciana	2.472,3	28,1	1,15	76,9	3,21
Extremadura	480,9	4,1	0,85	13,9	2,98
Galicia	1.292,6	-10,0	-0,77	19,6	1,54
Madrid (Comunidad de)	3.283,1	15,2	0,46	41,7	1,29
Murcia (Región de)	693,1	3,7	0,54	35,2	5,35
Navarra (Comunidad Foral de)	303,5	0,5	0,15	2,2	0,73
País Vasco	1.059,3	6,6	0,63	-6,1	-0,57
Rioja (La)	157,7	5,2	3,42	3,0	1,95
Ceuta	30,4	1,4	4,80	3,6	13,26
Melilla	29,2	0,4	1,47	3,2	12,35

* Data below 5000 are subject to strong variations, due to sampling error

Results by Autonomous Communities

(Conclusion)

	Current quarter	Variation on previous quarter		Variation on same quarter, previous year	
		Difference	Percentage	Difference	Percentage
3. Employed					
TOTAL	20.476,9	-33,7	-0,16	475,1	2,38
Andalucía	3.220,9	-7,5	-0,23	69,2	2,20
Aragón	616,4	-4,5	-0,72	28,1	4,77
Asturias (Principado de)	437,6	-4,3	-0,98	14,7	3,49
Balears (Illes)	495,0	-42,0	-7,83	3,5	0,71
Canarias	911,5	0,5	0,06	24,7	2,78
Cantabria	263,5	2,2	0,86	10,1	3,99
Castilla y León	1.081,1	-7,5	-0,69	20,6	1,95
Castilla-La Mancha	851,8	-6,7	-0,78	35,2	4,31
Cataluña	3.547,3	22,0	0,62	95,3	2,76
Comunitat Valenciana	2.249,1	18,3	0,82	56,9	2,60
Extremadura	410,4	-7,4	-1,78	3,9	0,96
Galicia	1.196,1	-19,0	-1,56	25,6	2,19
Madrid (Comunidad de)	3.073,8	2,0	0,07	42,8	1,41
Murcia (Región de)	635,8	3,2	0,51	29,9	4,94
Navarra (Comunidad Foral de)	290,6	0,8	0,27	3,0	1,06
País Vasco	998,6	9,5	0,97	4,3	0,43
Rioja (La)	148,8	4,4	3,05	5,0	3,50
Ceuta	24,6	1,6	7,09	1,5	6,68
Melilla	24,1	0,6	2,42	0,6	2,65

4. Unemployed

TOTAL	1.927,6	135,7	7,57	117,0	6,46
Andalucía	524,1	59,9	12,90	85,5	19,50
Aragón	33,1	1,3	4,25	2,1	6,68
Asturias (Principado de)	38,7	4,4	12,98	-4,0	-9,43
Balears (Illes)	49,0	24,0	95,91	16,7	51,70
Canarias	112,8	3,2	2,96	-2,2	-1,90
Cantabria	12,8	-2,6	-16,85	-3,4	-20,82
Castilla y León	81,3	-1,0	-1,19	-4,3	-5,01
Castilla-La Mancha	73,6	9,2	14,20	2,2	3,05
Cataluña	251,8	-3,9	-1,53	4,7	1,91
Comunitat Valenciana	223,2	9,8	4,58	20,0	9,85
Extremadura	70,5	11,5	19,50	10,0	16,61
Galicia	96,5	9,0	10,27	-6,0	-5,82
Madrid (Comunidad de)	209,4	13,1	6,70	-1,1	-0,52
Murcia (Región de)	57,3	0,5	0,93	5,3	10,22
Navarra (Comunidad Foral de)	13,0	-0,3	-2,40	-0,9	-6,17
País Vasco	60,7	-2,9	-4,59	-10,4	-14,63
Rioja (La)	8,9	0,8	9,97	-2,0	-18,48
Ceuta	5,8	-0,2	-3,88	2,0	(:)
Melilla	5,1	-0,1	-2,80	2,6	(:)

* Data below 5,000 are subject to strong variations, due to sampling error

(:) The variation percentages calculated from low figures with high sampling errors are not significant

EAPS - (ANNEXE TO THE TABLES) Fourth Quarter 2007 (6/7)

Results by Autonomous Communities and Provinces

(Absolute figures in thousands and rates in percentage)

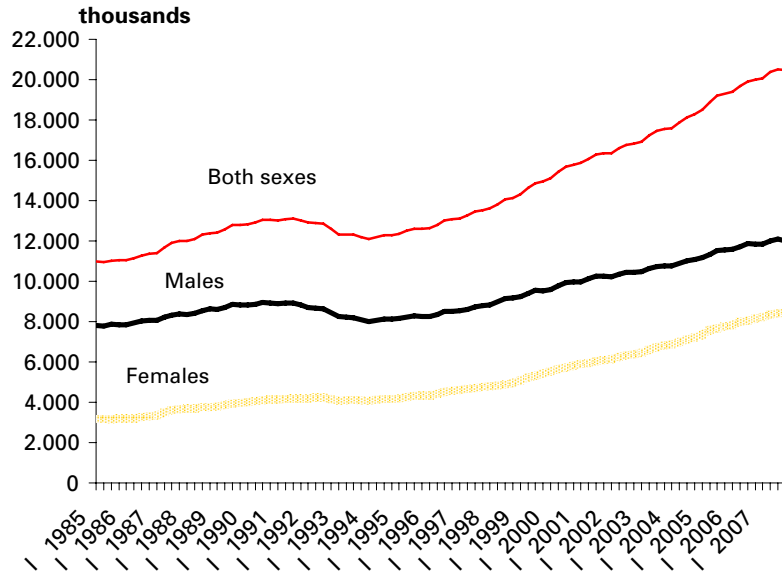
	Both sexes				Males				Females			
	Employed	Unemployed	Activity rate	Unem. rate	Employed	Unemployed	Activity rate	Unem. Rate	Employed	Unemployed	Activity rate	Unem. Rate
TOTAL	20.476,9	1.927,6	59,12	8,60	11.997,1	879,2	69,23	6,83	8.479,8	1.048,3	49,37	11,00
Andalucía	3.220,9	524,1	56,74	13,99	1.981,4	231,2	68,14	10,45	1.239,5	292,9	45,70	19,11
Almería	316,4	36,9	65,28	10,45	196,4	14,7	76,29	6,98	120,0	22,2	53,76	15,62
Cádiz	440,0	94,0	54,59	17,61	276,8	45,0	67,53	13,98	163,2	49,0	42,30	23,10
Córdoba	302,8	53,6	55,36	15,03	189,1	21,0	66,71	10,01	113,7	32,5	44,49	22,24
Granada	349,0	57,0	55,22	14,04	205,3	24,9	64,63	10,80	143,8	32,2	46,39	18,29
Huelva	188,6	37,8	55,48	16,71	121,0	16,7	67,65	12,12	67,6	21,1	43,38	23,82
Jaén	242,2	42,0	52,99	14,77	158,7	16,5	67,01	9,41	83,6	25,5	39,66	23,39
Málaga	632,5	88,5	57,22	12,28	380,6	46,3	67,96	10,84	251,9	42,3	46,55	14,36
Sevilla	749,3	114,2	57,69	13,22	453,7	46,1	68,49	9,23	295,6	68,1	47,41	18,71
Aragón	616,4	33,1	58,94	5,09	357,1	14,9	67,94	4,02	259,4	18,1	50,05	6,53
Huesca	100,1	4,9	55,89	4,66	60,0	2,1	66,38	3,45	40,1	2,8	45,46	6,43
Teruel	67,3	3,1	56,92	4,37	40,3	1,2	65,40	2,92	27,0	1,9	47,96	6,46
Zaragoza	449,1	25,1	59,98	5,29	256,8	11,6	68,72	4,32	192,3	13,5	51,44	6,57
Asturias	437,6	38,7	50,84	8,12	249,3	16,7	59,80	6,28	188,3	22,0	42,74	10,45
Balears (Illes)	495,0	49,0	63,14	9,01	290,6	24,8	73,36	7,86	204,5	24,2	52,97	10,59
Canarias	911,5	112,8	60,65	11,02	533,2	57,4	70,22	9,72	378,3	55,5	51,15	12,78
Palmas (Las)	480,5	67,1	63,42	12,26	284,0	35,1	73,22	10,99	196,4	32,1	53,44	14,04
S.C.Tenerife	431,0	45,7	57,75	9,59	249,1	22,3	67,01	8,22	181,9	23,4	48,83	11,39
Cantabria	263,5	12,8	56,36	4,63	155,1	5,0	67,19	3,13	108,4	7,8	46,11	6,70
Castilla y León	1.081,1	81,3	53,83	6,99	649,7	31,5	63,96	4,63	431,4	49,8	43,97	10,34
Ávila	72,6	4,3	53,17	5,58	45,7	1,4	64,37	3,05	27,0	2,9	41,70	9,58
Burgos	171,2	13,2	59,22	7,18	107,4	6,0	71,46	5,26	63,7	7,3	46,50	10,25
León	199,7	16,8	50,97	7,78	115,2	7,7	59,03	6,23	84,4	9,2	43,22	9,80
Palencia	70,1	4,1	50,38	5,48	42,3	1,8	61,75	4,19	27,8	2,2	39,66	7,37
Salamanca	133,2	11,1	48,15	7,68	77,8	4,1	58,26	4,95	55,4	7,0	39,22	11,25
Segovia	71,0	4,6	55,84	6,11	41,8	1,4	64,28	3,18	29,3	3,2	47,57	9,99
Soria	43,2	1,8	56,83	3,96	27,0	0,4	66,91	1,29	16,2	1,4	46,08	8,10
Valladolid	249,6	19,2	60,31	7,15	146,8	6,8	70,26	4,42	102,7	12,4	50,72	10,78
Zamora	70,6	6,2	44,77	8,06	45,7	2,1	55,28	4,31	24,9	4,1	34,10	14,23
Castilla-La Mancha	851,8	73,6	56,26	7,95	535,5	29,8	68,51	5,27	316,2	43,8	43,93	12,17
Albacete	174,0	19,9	59,43	10,24	104,6	8,0	70,10	7,08	69,4	11,9	49,09	14,61
Ciudad Real	201,7	19,7	51,99	8,90	129,9	7,1	66,06	5,17	71,8	12,6	38,63	14,94
Cuenca	82,5	3,4	47,62	3,94	54,6	1,1	60,85	1,89	28,0	2,3	34,04	7,69
Guadalajara	101,0	6,3	57,33	5,89	61,9	3,3	66,80	5,08	39,1	3,0	47,02	7,16
Toledo	292,5	24,3	60,34	7,68	184,6	10,4	72,68	5,32	107,9	14,0	47,45	11,46
Cataluña	3.547,3	251,8	62,80	6,63	2.037,2	120,8	72,46	5,60	1.510,1	130,9	53,44	7,98
Barcelona	2.643,9	182,5	63,30	6,46	1.501,0	88,0	72,85	5,54	1.142,9	94,6	54,19	7,64
Girona	338,8	34,6	63,24	9,27	202,0	13,2	73,11	6,15	136,8	21,4	53,42	13,52
Lleida	195,0	6,2	56,83	3,10	114,2	4,6	66,46	3,89	80,8	1,6	47,01	1,96
Tarragona	369,6	28,4	62,22	7,13	219,9	15,0	72,57	6,39	149,7	13,4	51,63	8,19
Comunitat Valenciana	2.249,1	223,2	60,49	9,03	1.317,9	113,0	70,71	7,90	931,2	110,2	50,47	10,58
Alicante	776,6	97,3	57,01	11,13	457,8	51,0	67,53	10,03	318,8	46,2	46,84	12,66
Castellón	280,1	22,3	63,05	7,37	164,0	11,2	72,55	6,37	116,1	11,1	53,41	8,75
Valencia	1.192,4	103,6	62,47	8,00	696,1	50,8	72,61	6,80	496,3	52,9	52,50	9,63
Extremadura	410,4	70,5	53,42	14,65	258,9	28,3	64,59	9,84	151,6	42,2	42,53	21,79
Badajoz	258,7	46,7	54,88	15,29	164,6	18,4	66,50	10,08	94,1	28,3	43,50	23,10
Cáceres	151,7	23,8	51,06	13,54	94,2	9,8	61,48	9,42	57,5	14,0	40,96	19,54
Galicia	1.196,1	96,5	54,21	7,47	683,1	40,6	63,55	5,61	513,0	55,9	45,66	9,82
Coruña (A)	493,8	45,5	55,10	8,44	282,3	18,5	65,76	6,14	211,6	27,0	45,74	11,33
Lugo	141,7	9,0	48,63	5,97	82,3	4,0	55,98	4,59	59,4	5,0	41,36	7,81
Ourense	139,3	7,6	50,38	5,20	81,1	3,7	59,13	4,31	58,2	4,0	41,93	6,42
Pontevedra	421,3	34,4	56,66	7,54	237,5	14,5	65,61	5,77	183,8	19,8	48,48	9,73
Madrid (Comunid.de)	3.073,8	209,4	63,90	6,38	1.698,7	96,1	72,65	5,35	1.375,0	113,3	55,80	7,61
Murcia (Región de)	635,8	57,3	60,56	8,27	390,7	28,8	72,64	6,87	245,1	28,5	48,26	10,42
Navarra (C. Foral de)	290,6	13,0	60,31	4,27	168,1	6,8	69,96	3,89	122,5	6,2	50,79	4,78
País Vasco	998,6	60,7	57,76	5,73	568,6	25,6	66,70	4,31	430,0	35,1	49,31	7,55
Álava	151,3	6,7	60,31	4,25	88,1	2,3	70,24	2,54	63,3	4,4	50,73	6,53
Guipúzcoa	339,0	18,0	60,85	5,04	192,6	8,7	70,14	4,33	146,4	9,3	51,96	5,96
Vizcaya	508,3	36,0	55,23	6,62	287,9	14,6	63,66	4,82	220,4	21,4	47,38	8,87
Rioja (La)	148,8	8,9	59,81	5,63	89,3	3,5	70,04	3,76	59,5	5,4	49,47	8,31
Ceuta	24,6	5,8	53,87	19,15	16,6	2,6	69,01	13,37	8,0	3,3	39,22	28,99
Melilla	24,1	5,1	55,78	17,52	16,2	1,9	70,95	10,41	7,8	3,2	41,32	29,15

* Data below 5,000 are subject to strong variations, due to sampling errors

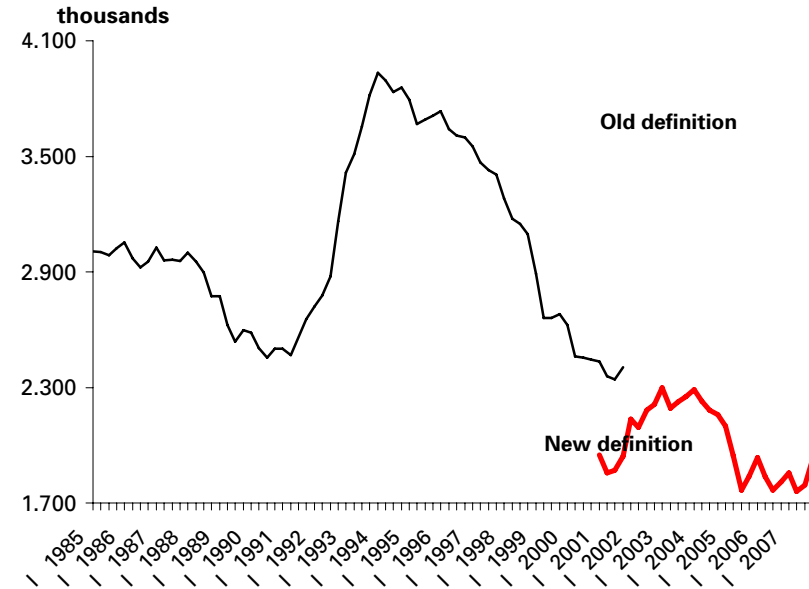
Employed and unemployed by sex

APS Fourth Quarter 2007

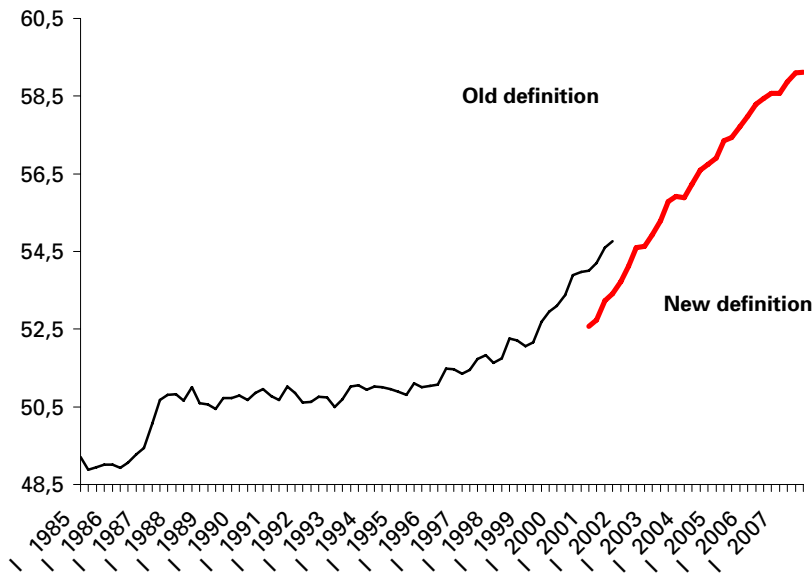
Employment



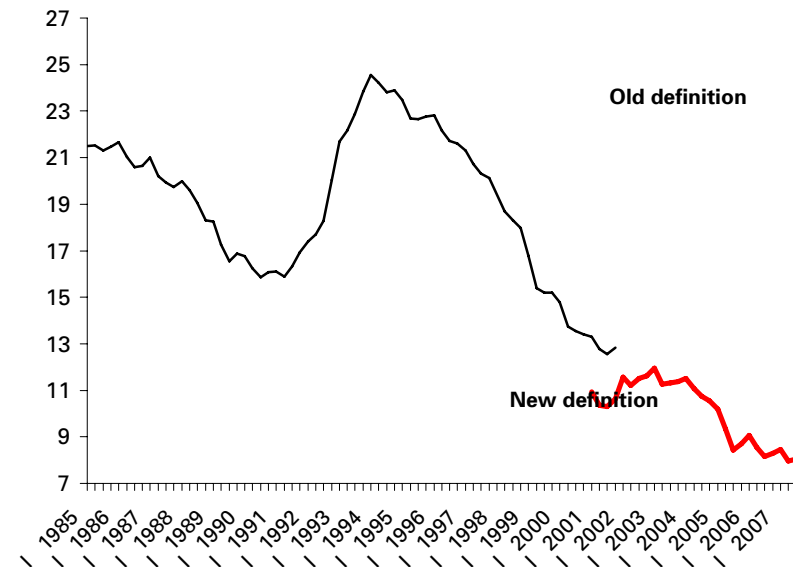
Unemployment



Activity rate



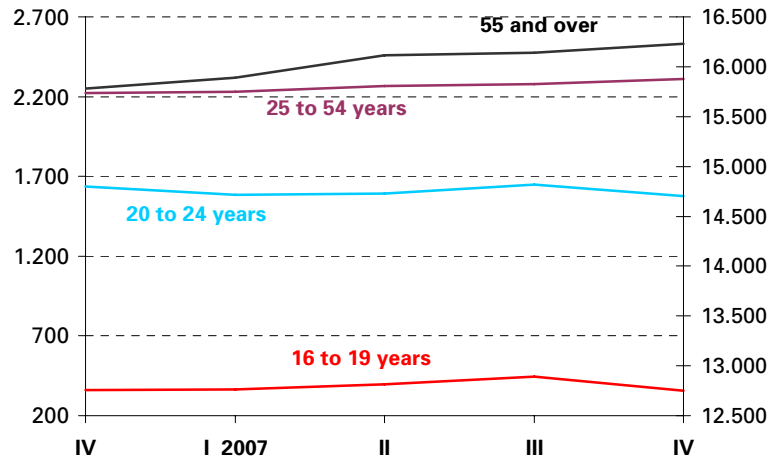
Unemployment rate



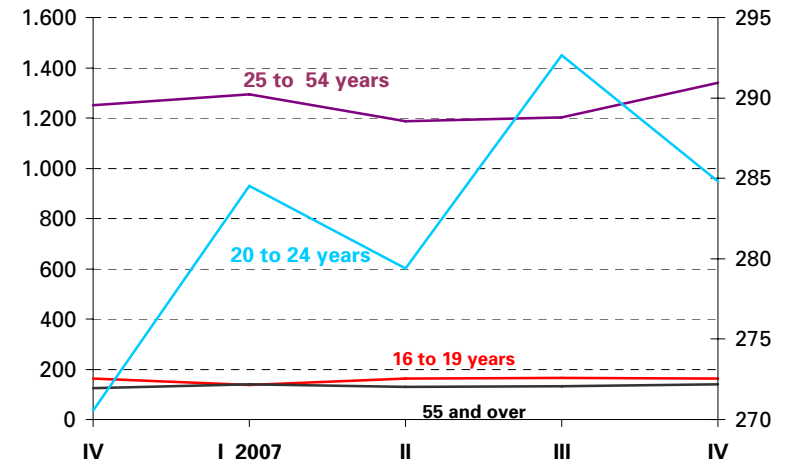
Employed and Unemployed by age

APS Fourth Quarter 2007

Employment

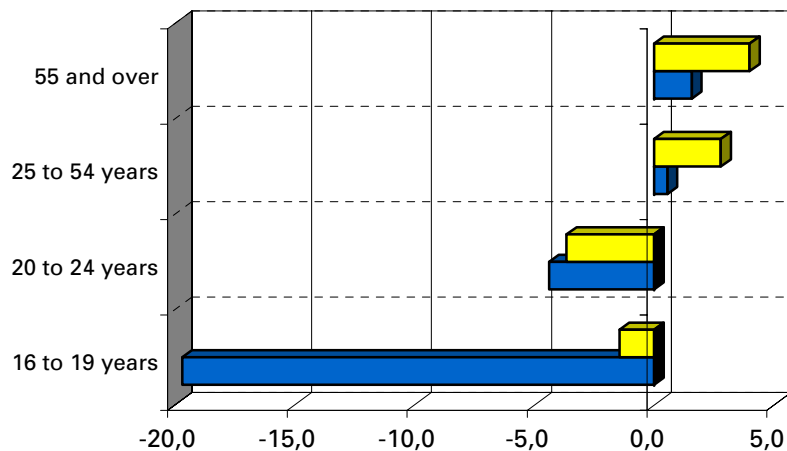


Unemployment



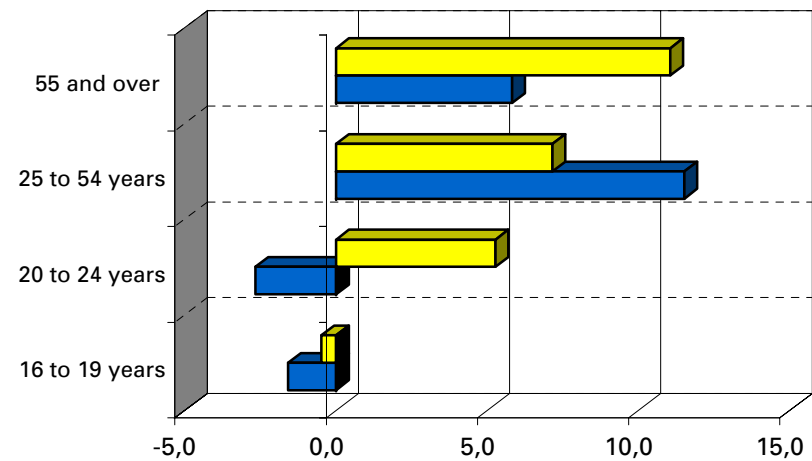
Variation percentages over the previous quarter and over the same quarter of the previous year

Employment



■ previous quarter ■ same quarter, previous year

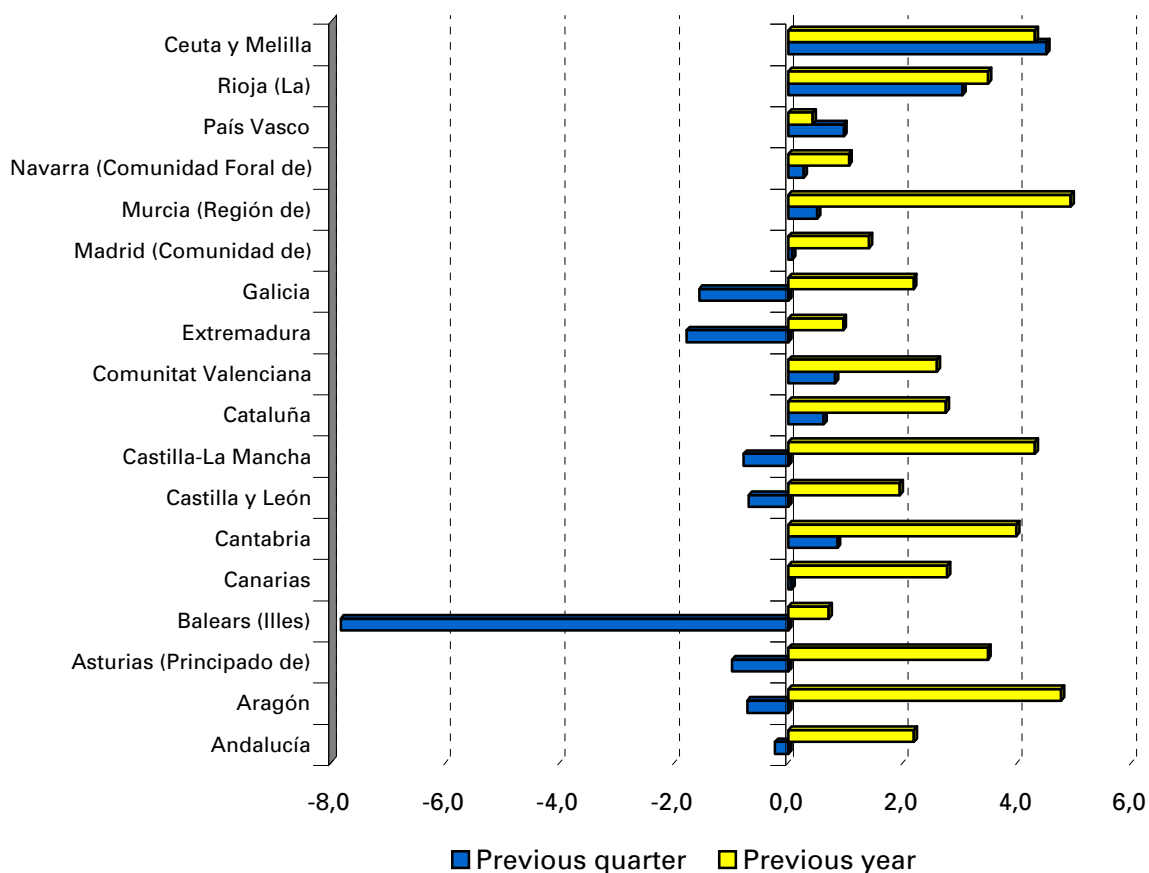
Unemployment



■ previous quarter ■ same quarter, previous year

Employment variation percentages over the previous quarter and over the same quarter of the previous year

Fourth Quarter 2007



Unemployment rate (Spain = 8,60)

