

28 January 2011

Economically Active Population Survey (EAPS)

Fourth quarter of 2010

Main results

- The fourth quarter of 2010 registers a decrease in employment of 138,600 persons, to 18,408,200 employed persons. The employment interannual variation rate stands at -1.28%.
- The economically active population drops by 16,700 persons this quarter. As a result, the number of unemployed persons increases by 121,900 persons, the total number of unemployed persons standing at 4,696,600.
- The unemployment rate grows more than half-a-point, standing at 20.33%. In turn, the activity rate stands below 60%, with a decrease of nine hundredths, as compared with the previous quarter.
- The evolution of the labour market has been more favourable for women than for men this quarter, in both employment and unemployment. By age, employment increases in the age groups between 35 and 44 years old and in those aged over 55 years old, whereas it decreases among the youngest age groups.
- The number of employed persons in the Services sector decreases by 115,800, and in Construction, it does so by 95,600. On the other hand, in Agriculture, employment increases by 50,500 persons and in Industry, by 22,200.
- Wage-earners with a temporary contract decrease by 149,600 persons this quarter, whereas wage-earners with a permanent contract increase by 7,400.
- The number of households with all of their active members unemployed increases by 35,600 this quarter, standing at 1,328,000.
- By Autonomous Community, the unemployment rate fluctuates between 10.89% in País Vasco and 28.96% in Canarias. The activity rate fluctuates between the 51.38% recorded in Principado de Asturias and 65.30% in Comunidad de Madrid.
- Employment grows in Comunidad de Madrid (28,000 more employed persons during the quarter), Andalucía (22,300) and Comunitat Valenciana (10,800) and falls in Illes Balears (56,000 fewer employed persons), Cataluña (42,600) and Galicia (25,600). In turn, unemployment decreases by 13,000 persons in Comunitat Valenciana, and increases in Illes Balears (24,100 more unemployed persons), Castilla-La Mancha (18,600), Cataluña (17,300) and Aragón (16,200).

Economically active population and activity rate

The economically active population experienced a decrease of 16,700 persons in the fourth quarter of 2010. The number of economically active persons stood at 23,104,800 persons.

The general activity rate fell nine tenths, standing at 59.99%. The female rate, continuing to rise, reached a new maximum (52.60%), with a rise of 38 hundredths, as compared with the third quarter.

The distance between the activity rates of Spaniards and foreign nationals remained at nearly 18.5 points, in favour of the latter, this circumstance being explained by the different age structures of both populations.

Employment

Employment decreased by 138,600 persons in the fourth quarter of the year, reaching 18,408,200. Thus, growth of employed persons from the previous two quarters came to an abrupt halt.

The increase in employed women (27,900) could not compensate for the drop in employment among men (166,500). By nationality, the number of employed foreign nationals decreased by 88,000, and that of Spaniards did so by 50,700.

By age, the increase in employment was observed between the ages of 35 and 44 years old, and among persons aged over 54 years old, whereas the decreases in employment this quarter were concentrated in those aged under 35 years old. Women presented a more favourable evolution than men in all age groups.

By sector, the increases observed in *Agriculture* (50,500 more employed persons) and in *Industry* (22,200) were insufficient to compensate for the decrease in employment in the *Services* and *Construction* sectors, which presented decreases of 115,800 and 95,600 employed persons, respectively.

The number of wage earners decreased by 142,100. This last figure was the balance, with an increase of 7,400 wage-earners with a permanent contract and a decrease of 149,600 with a temporary contract. The temporary employment rate fell, as a result, standing at 24.82%, which was 72 hundredths lower than the previous quarter.

Part-time employment increased by 102,500 persons this quarter, whilst full-time employed persons decreased by 241,200. The percentage of persons working part-time rose to 13.44%.

In interannual terms, the variation of employment was -1.28%, this rate being 43 hundredths higher than that registered the previous quarter. In one year, employment dropped by 237,800 persons, 178,400 of whom were wage-earners, and 85,900 of whom had a temporary contract.

Practically the total interannual number of job losses was among men (employed persons dropped by 231,000, whereas employed women did so by 6,800).

Unemployment and unemployment rate

The increase in unemployment was lower than the drop in employment, due to the decrease in the economically active population this quarter. The number of unemployed persons increased by 121,900, standing at 4,696,600. In the last 12 months, the total figure of unemployed persons increased by 370,100 persons.

The unemployment rate rose 54 hundredths, as compared with the third quarter, reaching 20.33%.

The increase in unemployment affected men (65,100 more) to a greater extent than women (56,800). The male unemployment rate was 19.95%, and the female rate was 20.79%. The composition of unemployment observed since the year 2008 thus remained, with relatively little distance between the male and female rates, and a greater number of unemployed men than unemployed women.

By nationality, the increase in unemployment affected Spaniards to a greater extent this quarter. 105,000 more unemployed Spaniards were observed, as compared with 16,900 more unemployed foreign nationals. The unemployment rate for the foreign population once again exceeded 30%, and was almost 12 points higher than that of persons of Spanish nationality.

By sector, unemployment decreased in *Agriculture* (23,200 fewer unemployed persons), *Construction* (22,000 fewer) and *Industry* (13,400). Nevertheless, the number of unemployed persons in *Services* rose by 25,000 and the number of unemployed persons who lost their job more than one year ago increased by 177,200 persons. The latter was the category that presented the greatest rise in the last year (572,000 more), far ahead of the rest. Unemployment decreased by 21,700 among those persons looking for their first job.

Mobility as related to economic activity

The probabilities of labour transition (mobility from one quarter to the next) showed a similar trend to that registered in the third quarter, regarding changes in the relationship with economic activity. The percentage of unemployed persons in the fourth quarter of the year in which they were employed three months prior was 19.24%, almost one point higher than in the third quarter, in line with losses of temporary jobs registered.

Households

The number of households with all of the active members unemployed experienced an increase of 35,600, standing at 1,328,000. In parallel, the number of households in which all of the active members were employed decreased by 39,400, reaching 9,220,700.

In an interannual comparison, the evolution in both cases was unfavourable, although the figures indicated a less pronounced deterioration than in the third quarter. Those households with all of the active members unemployed grew by 107,900 households, while those with all of the active members employed decreased by 187,800.

Results by Autonomous Community

The incorporation of new economically active persons in the labour market was especially significant in Comunidad de Madrid, Andalucía and Castilla–La Mancha. Comunidad de Madrid and Andalucía, in particular, presented the greatest increases in employment this

quarter (28,000 and 22,300, respectively). In Comunitat Valenciana, an appreciable increase in employment was also observed (10,800 more).

The greatest quarter-on-quarter drops in the number of economically active persons were recorded in Illes Balears, Cataluña and Galicia.

País Vasco was the Community that presented the greatest positive variation in employment in the last 12 months, whereas during the same period, decreases in employment of more than 40,000 persons were registered in Andalucía and Galicia.

Regarding unemployment, the Communities that presented the greatest quarterly increases were Illes Balears (with 24,100 more unemployed persons) and Castilla–La Mancha, Cataluña and Aragón (more than 15,000 each). The most significant decrease was in Comunitat Valenciana, with 13,000 fewer unemployed persons.

In the last 12 months, all Communities presented increases in unemployment, except País Vasco, which experienced a decrease, and Comunitat Valenciana, whose number of unemployed persons showed practically no change.

País Vasco, Comunidad Foral de Navarra and Cantabria had unemployment rates below 15%. At the opposite extreme, Canarias and Andalucía presented rates above 28%. This quarter, the activity rates fluctuated between 65.30% for Comunidad de Madrid and 51.38% for Principado de Asturias.

Results by province

The provincial results summary of the EAPS may be accessed via the following link:

http://www.ine.es/en/daco/daco42/daco4211/epapro0410_en.pdf

All of the provincial information from this survey may be accessed via the following links:

- In the INEbase database
<http://www.ine.es/jaxiBD/menu.do?L=1&divi=EPA&his=0&type=db>
- In the TEMPUS database
<http://www.ine.es/menu/redir/GSTConsul.shtml?divi=EPA&language=1>

For further information see **INEbase-www.ine.es** All press releases at: **www.ine.es/prensa/prensa_en.htm**

Press Office: Telephone numbers: 91 583 93 63 / 94 08 – Fax: 91 583 90 87 - gprensa@ine.es

Information Area: Telephone number: 91 583 91 00 – Fax: 91 583 91 58 – www.ine.es/infoine

Methodological note

General features

The Economically Active Population Survey (EAPS) is a continuous sample-based study aimed at family dwellings, and which has been conducted since 1964.

The additional sample collected by the *Galician Statistics Institute* (IGE) has been incorporated as of the third quarter of 2009, using the same fieldwork system and identical methodology to that of the INE. Therefore, apart from the 3,588 census sections that have made up the sample for the whole of Spain since 2005, we must take into account the 234 additional sections in the Autonomous Community of Galicia. Since the third quarter of 2009, the EAPS sample is made up of 3,822 census sections from the more than 30,000 census sections into which Spain is divided. An average of 18 households are surveyed in each one, except in the provinces of Barcelona, Madrid, Sevilla, Valencia and Zaragoza, where the number of households surveyed is 22. Thus, the sample size is approximately 65,000 dwellings, providing information on some 180,000 persons. The data is collected via personal and telephone interviews. The information is carefully filtered and computer-processed. Results are obtained within the month following the end of the reference quarter for the data.

Main definitions

Active persons: persons aged 16 and over who, during the reference week (the week prior to that when the interview is held), supplied labour for the production of economic goods and services, or were available to do so and carried out actions to incorporate themselves into said production. They are divided into employed and unemployed persons.

Employed persons: persons aged 16 and over who, during the reference week, worked for at least one hour in exchange for payment (salary, wage, business benefit, etc.) in cash or in kind. Persons who, being employed, had been temporarily absent from their job due to illness, holidays, etc., are also considered employed persons.

Employed persons are classified, considering their professional status, as non-wage earners (employers, businesspersons without wage earners and independent workers, cooperative members, family assistance) and wage earners (public or private).

Considering the length of the working day, employed persons are classified as full-time and part-time employed persons. The usual working week may not be shorter than 30 hours in the first case, nor exceed 35 hours in the second.

Wage earners are classified as permanent and temporary. For the latter, the end of their contract or work relationship is set by means of objective conditions, such as the expiry of a certain period of time, the completion of a specific task, etc.

A significant category within employment is that of **time-related underemployment**, defined in the 16th International Labour Statisticians Conference (Geneva, 1998). The EAPS considers persons suffering time-related underemployment as employed persons who would like to work more hours, who are available to work more hours and whose effective working hours in the reference week are less than the number of hours usually worked by employed persons working full-time in the same branch of activity as that in which the underemployed person develops his/her main job.

Unemployed persons: persons aged 16 and over who, during the reference week, were jobless, available for work, and actively looking for a job. Persons who might have already found a job and are waiting to start are also considered to be unemployed, provided that they meet the first two conditions.

According to European Commission Regulation 1897/2000, the following are considered as active search methods in the four weeks prior to the interview:

- Being in contact with a public employment office for the purpose of finding work, whatever part they play in the initiative (the renewal of registration due to purely administrative reasons does not constitute active planning).
- Being in contact with a private office (temporary employment agency, specialised hiring agency, etc.) with the objective of finding work.
- Having sent an application directly to employers.
- Having searched via personal relations and trade unions, etc.
- Having advertised oneself or responded to newspaper advertisements.
- Having studied job vacancies.
- Having taken part in a test, public exam or interview in the framework of a contracting procedure.
- Having looked for land, premises or material.
- Having taken steps to obtain permits, licences or financial resources.

Inactive population: persons aged 16 years old and over not included in any of the above categories.

Economically Active Population Survey Fourth Quarter 2010

National results

(Continues)

	Current quarter	Variation on previous quarter		Variation on same quarter, previous year	
		Difference	Percentage	Difference	Percentage
1. Population aged 16 years and over by sex and labour status					
BOTH SEXES					
Population aged 16 years and over	38,512.4	27.0	0.07	69.3	0.18
Active population	23,104.8	-16.7	-0.07	132.3	0.58
- Employed	18,408.2	-138.6	-0.75	-237.8	-1.28
- Unemployed	4,696.6	121.9	2.66	370.1	8.55
Inactive	15,407.6	43.7	0.28	-63.0	-0.41
Activity rate	59.99	-0.09	-	0.24	-
Unemployment rate	20.33	0.54	-	1.49	-
Population aged 16 to 64 years	30,812.3	-5.6	-0.02	-60.9	-0.20
Activity rate (16-64)	74.47	-0.06	-	0.61	-
Unemployment rate (16-64)	20.45	0.55	-	1.51	-
Employment rate (16-64)	59.24	-0.46	-	-0.63	-
MALES					
Population aged 16 years and over	18,835.0	7.1	0.04	1.8	0.01
Active population	12,754.9	-101.4	-0.79	-78.3	-0.61
- Employed	10,209.7	-166.5	-1.60	-231.0	-2.21
- Unemployed	2,545.2	65.1	2.62	152.7	6.38
Inactive	6,080.1	108.5	1.82	80.1	1.33
Activity rate	67.72	-0.56	-	-0.42	-
Unemployment rate	19.95	0.66	-	1.31	-
Population aged 16 to 64 years	15,532.8	-7.9	-0.05	-58.5	-0.38
Activity rate (16-64)	81.55	-0.60	-	-0.09	-
Unemployment rate (16-64)	20.07	0.67	-	1.33	-
Employment rate (16-64)	65.18	-1.03	-	-1.16	-
FEMALES					
Population aged 16 years and over	19,677.5	19.9	0.10	67.4	0.34
Active population	10,349.9	84.7	0.83	210.6	2.08
- Employed	8,198.5	27.9	0.34	-6.8	-0.08
- Unemployed	2,151.4	56.8	2.71	217.4	11.24
Inactive	9,327.6	-64.8	-0.69	-143.1	-1.51
Activity rate	52.60	0.38	-	0.89	-
Unemployment rate	20.79	0.38	-	1.71	-
Population aged 16 to 64 years	15,279.5	2.3	0.02	-2.4	-0.02
Activity rate (16-64)	67.28	0.50	-	1.36	-
Unemployment rate (16-64)	20.92	0.39	-	1.73	-
Employment rate (16-64)	53.20	0.13	-	-0.07	-

2. Spanish population¹ aged 16 years and over by labour status

SPANISH POPULATION AGED 16 YEARS AND OVER	33,783.3	54.9	0.16	100.3	0.30
Active population	19,501.4	54.3	0.28	152.4	0.79
- Employed	15,900.1	-50.7	-0.32	-198.6	-1.23
- Unemployed	3,601.3	105.0	3.00	351.0	10.80
Inactive	14,282.0	0.6	0.00	-52.1	-0.36
Activity rate	57.72	0.07	-	0.28	-
Unemployment rate	18.47	0.49	-	1.67	-

¹ including dual nationality

National results

(Continuation)

	Current quarter	Variation on previous quarter		Variation on same quarter, previous year	
		Difference	Percentage	Difference	Percentage
3. Foreign population aged 16 years and over by labour status					
FOREIGN POPULATION AGED 16 YEARS AND OVER	4,729.1	-27.9	-0.59	-31.0	-0.65
Active population	3,603.4	-71.0	-1.93	-20.1	-0.55
- Employed	2,508.1	-88.0	-3.39	-39.2	-1.54
- Unemployed	1,095.4	16.9	1.57	19.1	1.78
Inactive	1,125.7	43.1	3.98	-11.0	-0.97
Activity rate	76.20	-1.05	-	0.08	-
Unemployment rate	30.40	1.05	-	0.70	-
4. Employed by sex, age group and economic sector					
BOTH SEXES	18,408.2	-138.6	-0.75	-237.8	-1.28
16 to 19 years	123.4	-38.7	-23.87	-37.5	-23.33
20 to 24 years	1,000.2	-90.6	-8.31	-111.9	-10.06
25 to 29 years	2,070.6	-60.5	-2.84	-174.0	-7.75
30 to 34 years	2,826.2	-28.6	-1.00	-76.6	-2.64
35 to 39 years	2,883.5	40.5	1.42	67.7	2.41
40 to 44 years	2,661.8	28.6	1.09	-18.8	-0.70
45 to 49 years	2,443.8	-1.7	-0.07	28.3	1.17
50 to 54 years	2,030.8	-2.8	-0.14	50.3	2.54
55 and over	2,367.8	15.2	0.65	34.8	1.49
MALES	10,209.7	-166.5	-1.60	-231.0	-2.21
16 to 19 years	73.0	-23.1	-24.00	-28.9	-28.37
20 to 24 years	512.7	-54.6	-9.63	-61.9	-10.77
25 to 29 years	1,068.6	-38.4	-3.47	-94.1	-8.10
30 to 34 years	1,533.8	-31.1	-1.99	-68.7	-4.29
35 to 39 years	1,610.9	5.3	0.33	26.1	1.64
40 to 44 years	1,493.1	9.5	0.64	6.8	0.45
45 to 49 years	1,362.2	-8.4	-0.61	6.3	0.46
50 to 54 years	1,144.1	-8.8	-0.77	7.7	0.67
55 and over	1,411.3	-16.9	-1.19	-24.0	-1.67
FEMALES	8,198.5	27.9	0.34	-6.8	-0.08
16 to 19 years	50.3	-15.6	-23.67	-8.6	-14.60
20 to 24 years	487.5	-36.0	-6.88	-50.0	-9.31
25 to 29 years	1,002.1	-22.1	-2.16	-79.9	-7.38
30 to 34 years	1,292.4	2.5	0.19	-7.9	-0.61
35 to 39 years	1,272.6	35.2	2.84	41.7	3.39
40 to 44 years	1,168.7	19.1	1.66	-25.6	-2.14
45 to 49 years	1,081.7	6.7	0.62	22.1	2.08
50 to 54 years	886.7	6.1	0.69	42.6	5.05
55 and over	956.5	32.2	3.48	58.9	6.56
TOTAL EMPLOYED	18,408.2	-138.6	-0.75	-237.8	-1.28
Agriculture	804.5	50.5	6.70	21.9	2.80
Industry	2,622.8	22.2	0.86	-58.1	-2.17
Construction	1,572.5	-95.6	-5.73	-230.2	-12.77
Services	13,408.3	-115.8	-0.86	28.6	0.21

National results

(Continuation)

	Current quarter	Variation on previous quarter		Variation on same quarter, previous year	
		Difference	Percentage	Difference	Percentage
5. Employed by professional status, type of contract and working hours					
TOTAL EMPLOYED	18,408.2	-138.6	-0.75	-237.8	-1.28
Self-employed workers	3,084.1	-1.3	-0.04	-56.5	-1.80
- Employers	1,013.2	5.2	0.52	-37.8	-3.60
- Independent workers	1,897.7	0.9	0.05	4.4	0.23
- Cooperatives members	35.6	4.8	15.52	-1.9	-5.05
- Family workers	137.6	-12.2	-8.13	-21.3	-13.39
Employees	15,314.2	-142.1	-0.92	-178.4	-1.15
- With a permanent job	11,513.9	7.4	0.06	-92.5	-0.80
- With a temporary job	3,800.3	-149.6	-3.79	-85.9	-2.21
Others	9.8	4.8	94.86	-2.8	-22.20
FULL-TIME EMPLOYED	15,933.7	-241.2	-1.49	-241.5	-1.49
Males	9,645.4	-186.5	-1.90	-242.3	-2.45
Females	6,288.3	-54.6	-0.86	0.8	0.01
PART-TIME EMPLOYED	2,474.5	102.5	4.32	3.7	0.15
Males	564.3	20.0	3.68	11.4	2.05
Females	1,910.2	82.5	4.51	-7.6	-0.40

6. Unemployed by sex, age group, and economic sector

BOTH SEXES	4,696.6	121.9	2.66	370.1	8.55
16 to 19 years	217.6	-24.7	-10.19	-0.7	-0.34
20 to 24 years	623.0	4.5	0.73	25.0	4.18
25 to 54 years	3,476.2	128.1	3.83	296.0	9.31
55 and over	379.8	13.9	3.81	49.8	15.09
MALES	2,545.2	65.1	2.62	152.7	6.38
16 to 19 years	122.2	-14.8	-10.83	-13.3	-9.80
20 to 24 years	346.5	12.8	3.85	12.3	3.68
25 to 54 years	1,837.7	57.4	3.22	111.2	6.44
55 and over	238.8	9.7	4.24	42.5	21.63
FEMALES	2,151.4	56.8	2.71	217.4	11.24
16 to 19 years	95.4	-9.8	-9.36	12.5	15.13
20 to 24 years	276.5	-8.3	-2.91	12.7	4.82
25 to 54 years	1,638.5	70.8	4.51	184.8	12.71
55 and over	140.9	4.2	3.08	7.3	5.49
TOTAL UNEMPLOYED	4,696.6	121.9	2.66	370.1	8.55
Agriculture	209.0	-23.2	-9.98	16.1	8.35
Industry	231.8	-13.4	-5.47	-95.6	-29.19
Construction	439.1	-22.0	-4.78	-175.5	-28.56
Services	1,410.7	25.0	1.81	-3.8	-0.27
Lost their job more than 1 year ago	2,049.2	177.2	9.47	572.0	38.72
First job seekers	356.8	-21.7	-5.73	56.9	18.99

National results

(Conclusion)

	Current quarter	Variation on previous quarter		Variation on same quarter, previous year	
		Difference	Percentage	Difference	Percentage

7. Unemployment rate by relationship with the reference person

	Current quarter	Variation on previous quarter	Percentage	Variation on same quarter, previous year	Percentage
TOTAL	20.33	0.54	-	1.49	-
Reference person	16.62	0.51	-	0.87	-
Spouse or partner	17.25	0.48	-	1.72	-
Child	33.31	1.64	-	3.52	-
Other relatives	26.98	-0.40	-	0.60	-
Unrelated persons	18.89	-0.38	-	-0.79	-

8. Household data

	Current quarter	Variation on previous quarter	Percentage	Variation on same quarter, previous year	Percentage
TOTAL HOUSEHOLDS	17,252.7	53.1	0.31	131.3	0.77
Households with at least one active member	12,959.9	35.0	0.27	91.6	0.71
- All member employed	9,220.7	-39.4	-0.43	-187.8	-2.00
- All member unemployed	1,328.0	35.6	2.76	107.9	8.85
Households without any active population	4,292.8	18.1	0.42	39.7	0.93

Mobility according to activity in current and previous quarter

Classification in previous quarter	Total	Classification in current quarter		
		Employed	Unemployed	Inactive
BOTH SEXES				
Total	100.00	100.00	100.00	100.00
Employed	48.10	92.50	19.24	3.97
Unemployed	11.32	4.66	62.48	4.30
Inactive	40.58	2.84	18.28	91.73
MALES				
Total	100.00	100.00	100.00	100.00
Employed	55.09	93.82	20.14	4.77
Unemployed	12.57	4.51	67.07	4.28
Inactive	32.34	1.67	12.79	90.96
FEMALES				
Total	100.00	100.00	100.00	100.00
Employed	41.42	90.86	18.19	3.46
Unemployed	10.13	4.83	57.10	4.31
Inactive	48.45	4.31	24.71	92.24

Grossing up factors of current quarter (forward analysis)

Results by Autonomous Communities

(Continues)

	Current quarter	Variation on previous quarter		Variation on same quarter, previous year	
		Difference	Percentage	Difference	Percentage
1. Population aged 16 years and over					
TOTAL	38,512.4	27.0	0.07	69.3	0.18
Andalucía	6,770.7	5.8	0.09	36.3	0.54
Aragón	1,111.1	0.8	0.08	-1.7	-0.15
Asturias (Principado de)	929.4	-1.2	-0.13	-4.0	-0.43
Balears (Illes)	898.8	2.6	0.30	6.9	0.77
Canarias	1,749.4	4.2	0.24	12.5	0.72
Cantabria	494.4	-0.8	-0.16	-0.7	-0.13
Castilla y León	2,146.0	-2.0	-0.09	-9.3	-0.43
Castilla-La Mancha	1,703.3	2.6	0.15	7.7	0.46
Cataluña	6,077.1	-1.0	-0.02	4.9	0.08
Comunitat Valenciana	4,173.4	7.6	0.18	0.7	0.02
Extremadura	907.5	1.0	0.11	1.4	0.16
Galicia	2,382.1	-1.1	-0.05	-3.9	-0.16
Madrid (Comunidad de)	5,268.2	7.3	0.14	15.5	0.29
Murcia (Región de)	1,188.2	0.8	0.07	4.6	0.39
Navarra (Comunidad Foral de)	513.5	0.4	0.07	1.4	0.28
País Vasco	1,821.8	1.1	0.06	-3.7	-0.20
Rioja (La)	262.8	-1.1	-0.40	-1.8	-0.69
Ceuta	59.4	0.1	0.15	1.1	1.91
Melilla	55.6	-0.2	-0.42	1.3	2.33

2. Active population

TOTAL	23,104.8	-16.7	-0.07	132.3	0.58
Andalucía	3,976.5	20.2	0.51	48.9	1.25
Aragón	643.6	3.5	0.54	-10.3	-1.57
Asturias (Principado de)	477.5	-4.8	-1.00	-3.8	-0.78
Balears (Illes)	578.6	-32.0	-5.24	3.4	0.59
Canarias	1,085.6	3.5	0.32	-6.5	-0.60
Cantabria	274.8	0.2	0.06	-2.3	-0.82
Castilla y León	1,183.6	-11.5	-0.96	7.4	0.63
Castilla-La Mancha	990.4	12.5	1.28	12.2	1.24
Cataluña	3,820.3	-25.2	-0.66	40.8	1.08
Comunitat Valenciana	2,513.8	-2.2	-0.09	-39.0	-1.53
Extremadura	497.0	0.3	0.07	13.3	2.76
Galicia	1,296.6	-17.4	-1.33	-10.7	-0.82
Madrid (Comunidad de)	3,440.4	24.3	0.71	44.1	1.30
Murcia (Región de)	747.4	7.1	0.96	28.5	3.96
Navarra (Comunidad Foral de)	306.8	-1.8	-0.60	1.0	0.33
País Vasco	1,054.4	9.1	0.87	6.4	0.61
Rioja (La)	155.9	-3.2	-2.01	-2.8	-1.74
Ceuta	32.2	0.3	0.80	0.2	0.71
Melilla	29.5	0.4	1.45	1.4	5.03

* Data below 5000 are subject to strong variations, due to sampling error

Results by Autonomous Communities

(Conclusion)

	Current quarter	Variation on previous quarter		Variation on same quarter, previous year	
		Difference	Percentage	Difference	Percentage
3. Employed					
TOTAL	18,408.2	-138.6	-0.75	-237.8	-1.28
Andalucía	2,849.1	22.3	0.79	-44.4	-1.54
Aragón	540.3	-12.7	-2.29	-26.7	-4.71
Asturias (Principado de)	398.0	-15.5	-3.74	-14.8	-3.58
Balears (Illes)	450.0	-56.0	-11.08	-12.8	-2.77
Canarias	771.2	-0.7	-0.09	-27.1	-3.39
Cantabria	233.8	-7.4	-3.07	-8.3	-3.43
Castilla y León	996.8	-16.8	-1.66	-12.9	-1.28
Castilla-La Mancha	779.2	-6.0	-0.77	-11.0	-1.39
Cataluña	3,133.5	-42.6	-1.34	-2.9	-0.09
Comunitat Valenciana	1,937.9	10.8	0.56	-38.9	-1.97
Extremadura	378.2	-7.1	-1.85	-2.6	-0.68
Galicia	1,093.1	-25.6	-2.29	-45.8	-4.02
Madrid (Comunidad de)	2,898.4	28.0	0.97	0.6	0.02
Murcia (Región de)	560.6	-2.3	-0.41	3.3	0.59
Navarra (Comunidad Foral de)	271.1	0.9	0.35	-2.5	-0.91
País Vasco	939.5	-1.5	-0.16	14.6	1.58
Rioja (La)	131.4	-5.4	-3.93	-5.5	-4.03
Ceuta	24.2	-0.6	-2.30	0.1	0.37
Melilla	21.8	-0.5	-2.11	-0.2	-0.84

4. Unemployed

TOTAL	4,696.6	121.9	2.66	370.1	8.55
Andalucía	1,127.4	-2.2	-0.19	93.4	9.03
Aragón	103.3	16.2	18.53	16.4	18.92
Asturias (Principado de)	79.6	10.7	15.46	11.0	16.08
Balears (Illes)	128.6	24.1	23.02	16.2	14.42
Canarias	314.4	4.2	1.34	20.6	7.00
Cantabria	41.0	7.6	22.68	6.0	17.23
Castilla y León	186.8	5.4	2.96	20.3	12.17
Castilla-La Mancha	211.2	18.6	9.66	23.1	12.31
Cataluña	686.8	17.3	2.59	43.7	6.80
Comunitat Valenciana	575.9	-13.0	-2.21	-0.1	-0.03
Extremadura	118.8	7.5	6.73	15.9	15.49
Galicia	203.5	8.2	4.20	35.1	20.86
Madrid (Comunidad de)	542.0	-3.7	-0.67	43.5	8.72
Murcia (Región de)	186.7	9.4	5.30	25.2	15.60
Navarra (Comunidad Foral de)	35.7	-2.8	-7.23	3.5	10.95
País Vasco	114.9	10.6	10.16	-8.3	-6.72
Rioja (La)	24.4	2.2	9.80	2.8	12.71
Ceuta	8.0	0.8	11.50	0.1	1.75
Melilla	7.7	0.9	13.13	1.6	26.22

* Data below 5,000 are subject to strong variations, due to sampling error

(-) The variation percentages calculated from low figures with high sampling errors are not significant

Results by Autonomous Communities

(Absolute figures in thousands and rates in percentage)

5. Employed and unemployed by sex. Activity and unemployment rates

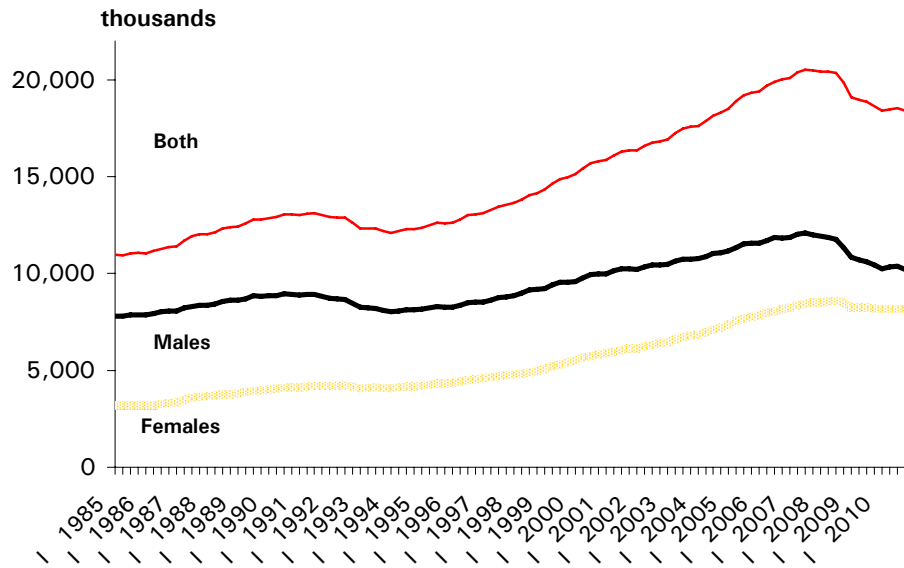
	Both sexes				Males				Females			
	Employed	Unemployed	Activity rate	Unem. rate	Employed	Unemployed	Activity rate	Unem. Rate	Employed	Unemployed	Activity rate	Unem. Rate
TOTAL	18,408.2	4,696.6	59.99	20.33	10,209.7	2,545.2	67.72	19.95	8,198.5	2,151.4	52.60	20.79
Andalucía	2,849.1	1,127.4	58.73	28.35	1,643.0	602.0	67.46	26.82	1,206.1	525.3	50.30	30.34
Aragón	540.3	103.3	57.93	16.06	304.5	54.5	65.33	15.17	235.8	48.9	50.68	17.17
Asturias	398.0	79.6	51.38	16.67	215.8	39.9	58.05	15.59	182.1	39.7	45.38	17.90
Baleares (Illes)	450.0	128.6	64.37	22.23	245.1	74.5	71.36	23.31	204.8	54.1	57.43	20.89
Canarias	771.2	314.4	62.05	28.96	421.7	181.1	69.49	30.04	349.4	133.3	54.74	27.62
Cantabria	233.8	41.0	55.59	14.93	131.8	20.0	63.36	13.17	102.0	21.0	48.29	17.09
Castilla y Leon	996.8	186.8	55.15	15.78	571.2	94.8	63.01	14.23	425.7	92.0	47.53	17.77
Castilla-La Mancha	779.2	211.2	58.15	21.33	471.8	110.1	68.11	18.92	307.3	101.1	48.12	24.75
Cataluña	3,133.5	686.8	62.86	17.98	1,677.4	399.3	70.02	19.23	1,456.2	287.4	56.04	16.49
Comunitat Valenciana	1,937.9	575.9	60.23	22.91	1,083.2	315.7	67.93	22.57	854.7	260.2	52.74	23.34
Extremadura	378.2	118.8	54.76	23.90	227.6	60.7	64.39	21.05	150.6	58.1	45.39	27.84
Galicia	1,093.1	203.5	54.43	15.69	593.0	106.3	61.47	15.20	500.1	97.2	48.00	16.28
Madrid (Comunid.de)	2,898.4	542.0	65.30	15.75	1,537.4	279.5	72.08	15.38	1,361.0	262.5	59.09	16.17
Murcia (Región de)	560.6	186.7	62.90	24.98	320.0	109.4	71.70	25.48	240.7	77.3	53.95	24.31
Navarra (C. Foral de)	271.1	35.7	59.76	11.64	151.3	19.2	67.10	11.28	119.8	16.5	52.56	12.10
País Vasco	939.5	114.9	57.88	10.89	509.3	58.6	64.59	10.32	430.2	56.2	51.61	11.56
Rioja (La)	131.4	24.4	59.32	15.68	75.7	12.4	67.72	14.12	55.8	12.0	51.08	17.69
Ceuta	24.2	8.0	54.19	24.82	16.4	3.7	65.58	18.28	7.8	4.3	42.08	35.66
Melilla	21.8	7.7	53.09	26.06	13.3	3.6	63.61	21.16	8.5	4.1	43.48	32.61

* Data below 5,000 are subject to strong variations, due to sampling errors

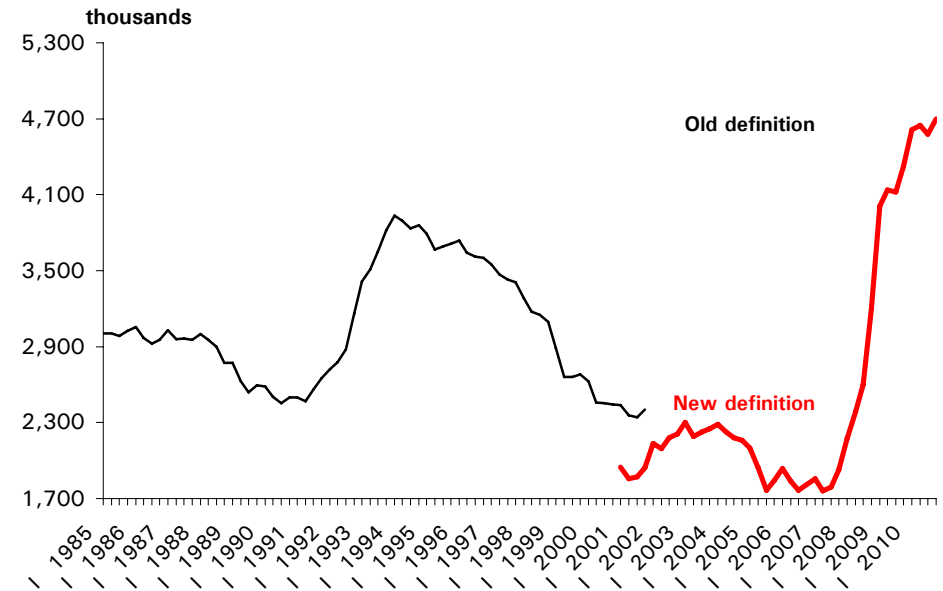
Employed and unemployed by sex

APS Fourth Quarter 2010

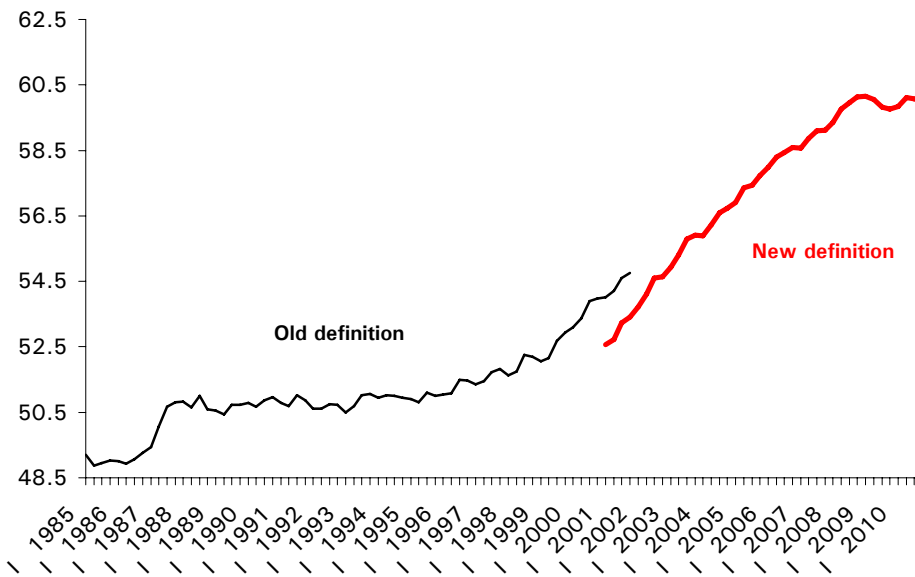
Employment



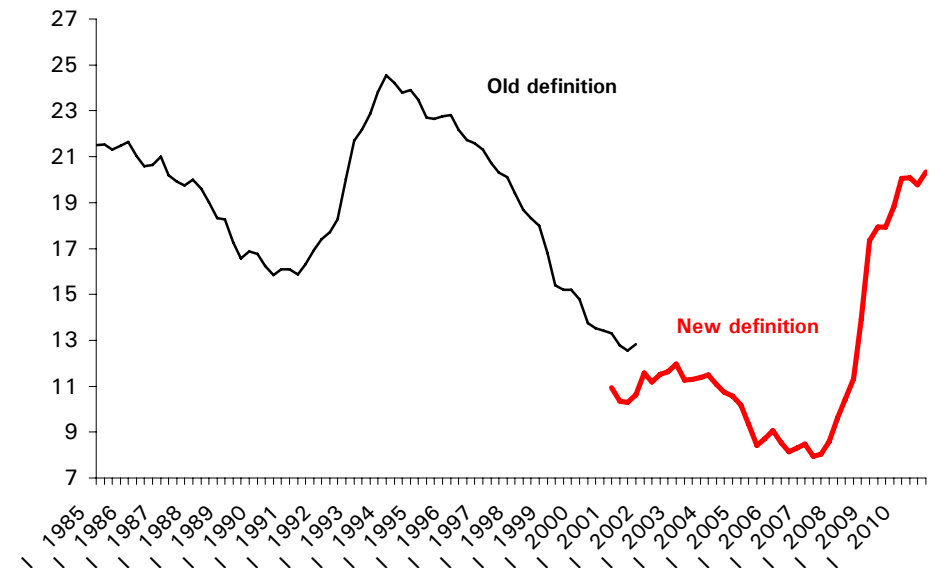
Unemployment



Activity rate



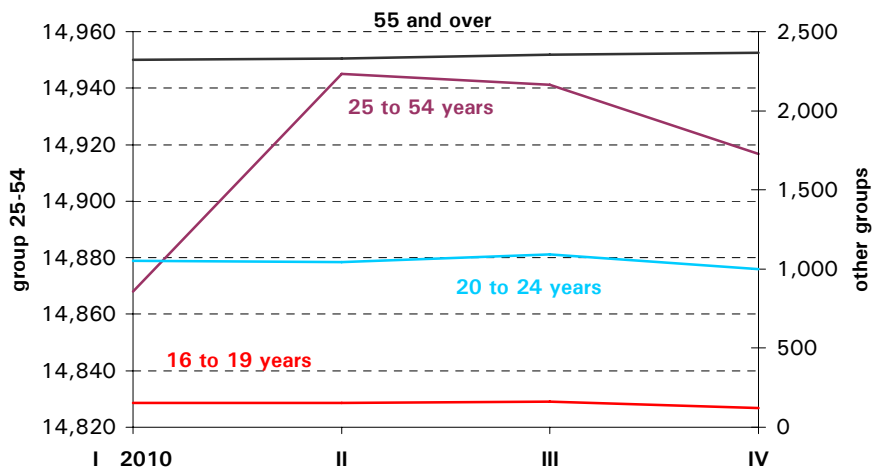
Unemployment rate



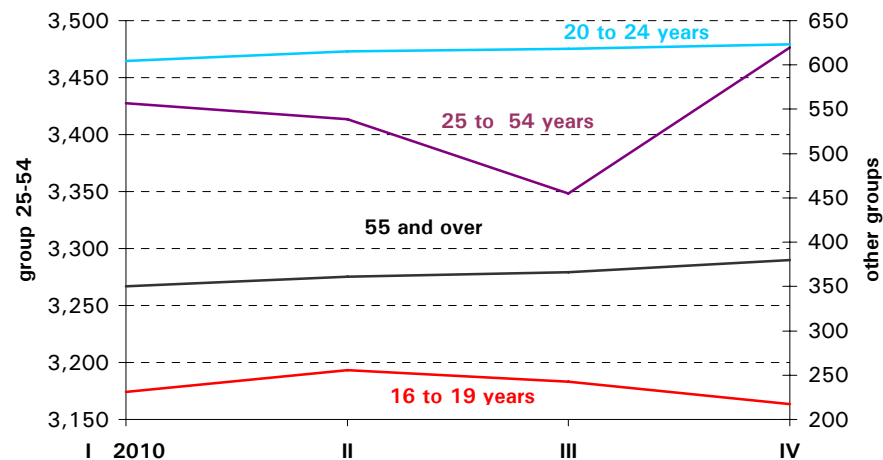
Employed and Unemployed by age

APS Fourth Quarter 2010

Employment (thousands)

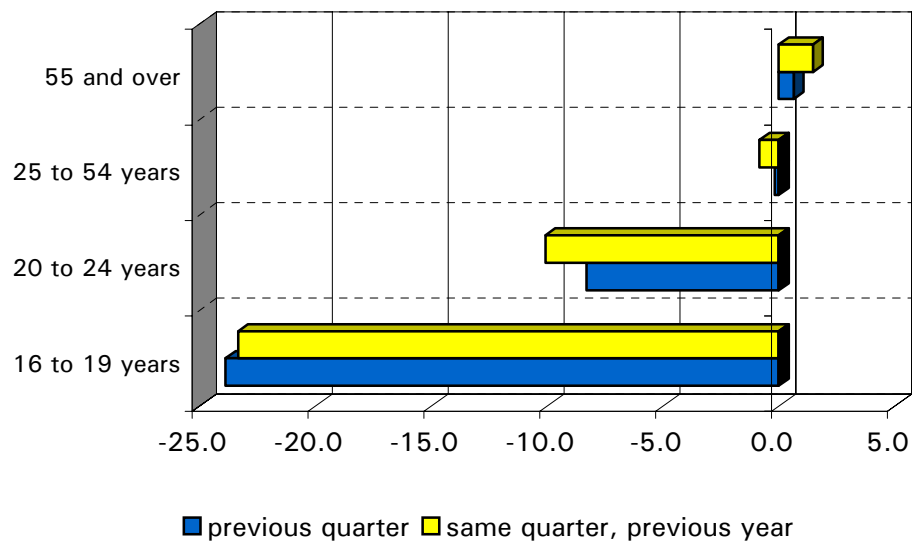


Unemployment (thousands)

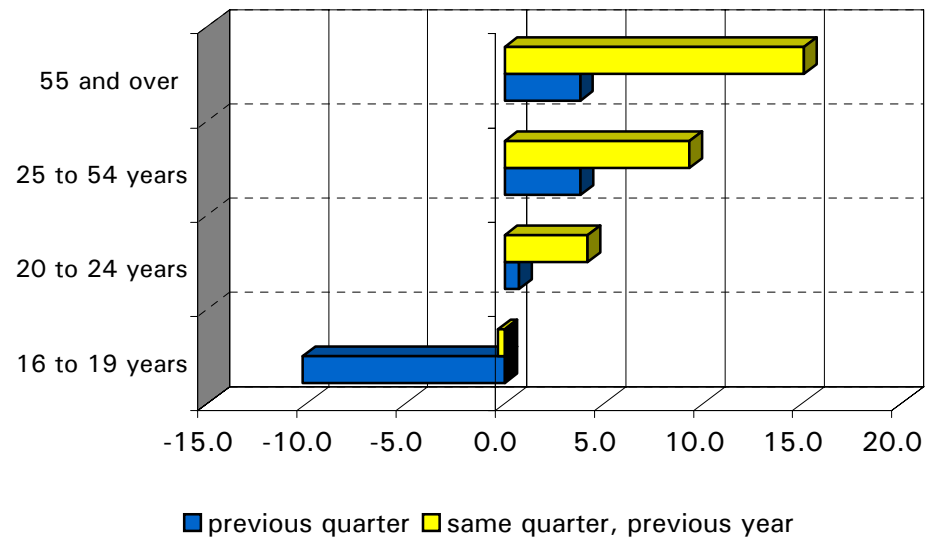


Variation percentages over the previous quarter and over the same quarter of the previous year

Employment

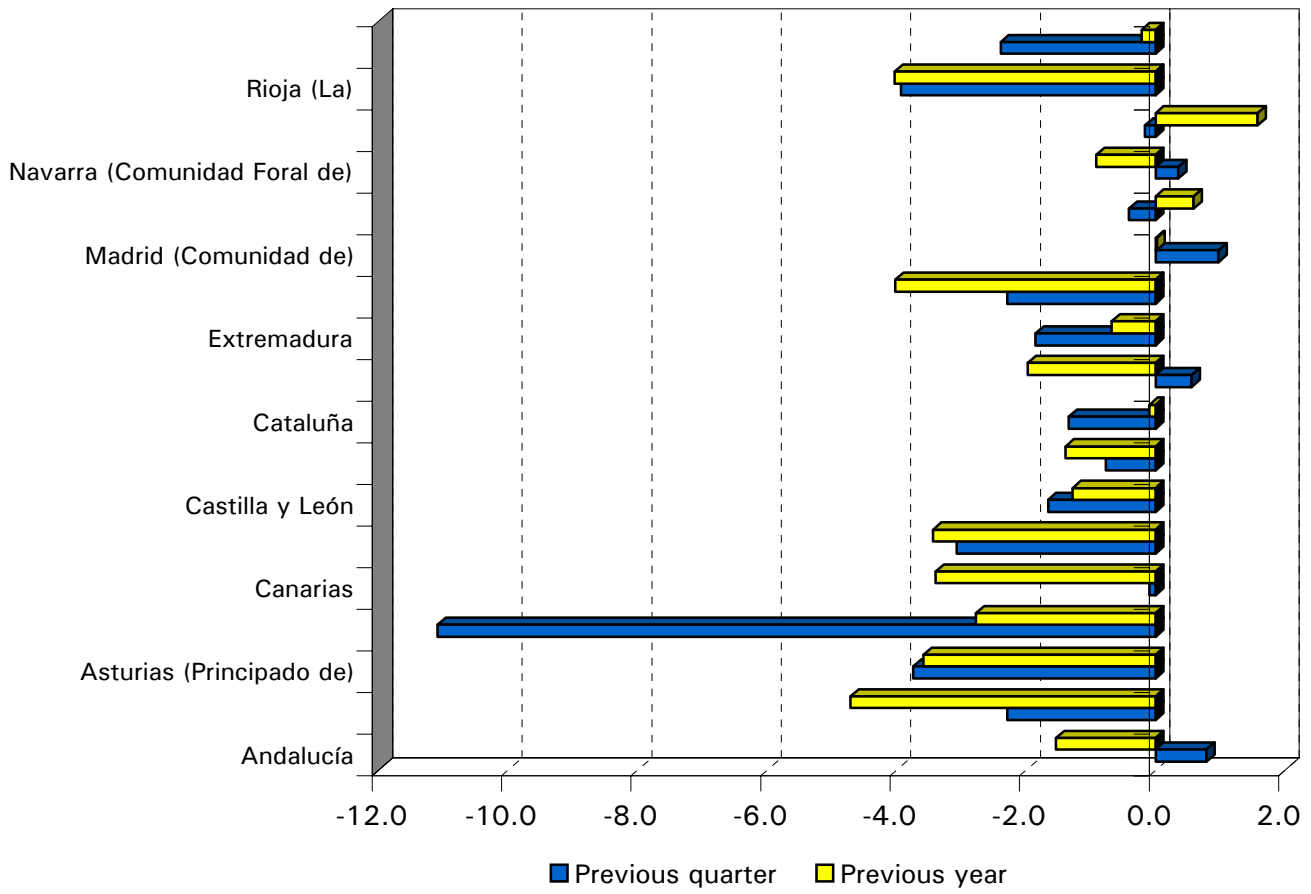


Unemployment



Employment variation percentages over the previous quarter and over the same quarter of the previous year

Fourth Quarter 2010



Unemployment rate (Spain = 20.33)

