

Economically Active Population Survey (EAPS)

Forth quarter of 2012

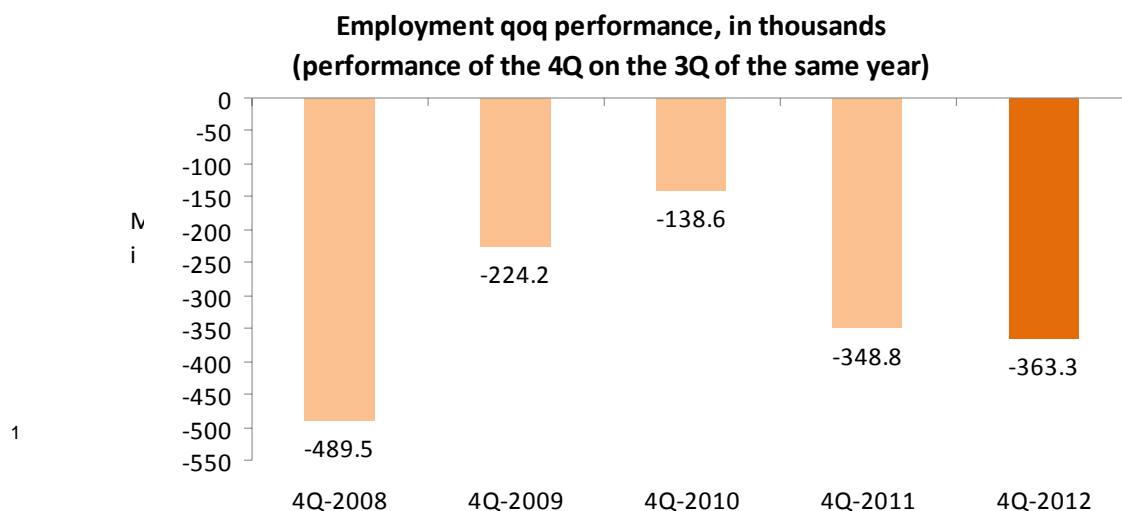
Main results

- Population of 16 and over years of age decreases by 87,300 in the forth quarter of 2012, being 73,700 of them foreign nationals. The group of persons of 16-64 years of age registers a decrease of 116,800 persons as compared to the previous quarter. The number of households decreases by 65,800.
- The economically active population decreases by 176,000 persons, mainly among young people under-25 years of age. The activity rate decreases 32 hundredths, reaching 59.80%.
- Employment in the forth quarter of 2012 registers a decrease of 363,300 persons, reaching a total of 16,957,100 employed persons. The quarterly employment variation rate stands at -2.10%. Employment decreases by 74,500 persons in public employment and by 288,700 in private employment.
- The number of self-employed workers or businesspersons without wage earners increases 14,800 this quarter. However, the number of independent workers decreases by 55,400. The total of wage earners with a permanent contract decreases by 91,100, and wage earners with a temporary contract decrease by 216,600.
- Employment increases by 63,700 persons in *Agriculture*, decreases by 305,600 in *Services*, by 62,900 in *Construction* and by 58,500 in *Industry*.
- The Autonomous Communities with the greatest decreases in employment are: Comunida de Madrid (74,200 fewer employed persons), Cataluña (73,100) and Illes Balears (57,800).
- Illes Balears is the only Autonomous Community with a positive interannual variation rate (3.23%). Aragón (-0.90%), Canarias (-1.87%) and Comunidad de Madrid (-2.24%) have the lowest negative interannual rates. In Castilla-La Mancha (-8.92%), País Vasco (-7.12%), Cataluña (-6.50%) and Andalucía (-6.17%) the greatest decreases in the employment interannual rate are registered.
- The number of unemployed persons increases by 187,300 persons and stands at 5,965,400. The unemployment rate increases one point, standing at 26.02%.
- The greatest decreases in the number of unemployed persons are registered in Canarias (9,800 fewer unemployed persons). Cataluña (44,700), Comunidad de Madrid (37,100) and Illes Balears (21,600) register the greatest increases in the number of unemployed persons.

Employment

The number of employed persons decreased by 363,300 persons in the fourth quarter of 2012, standing at 16,957,100. The quarterly variation rate of employment stood at -2.10% .

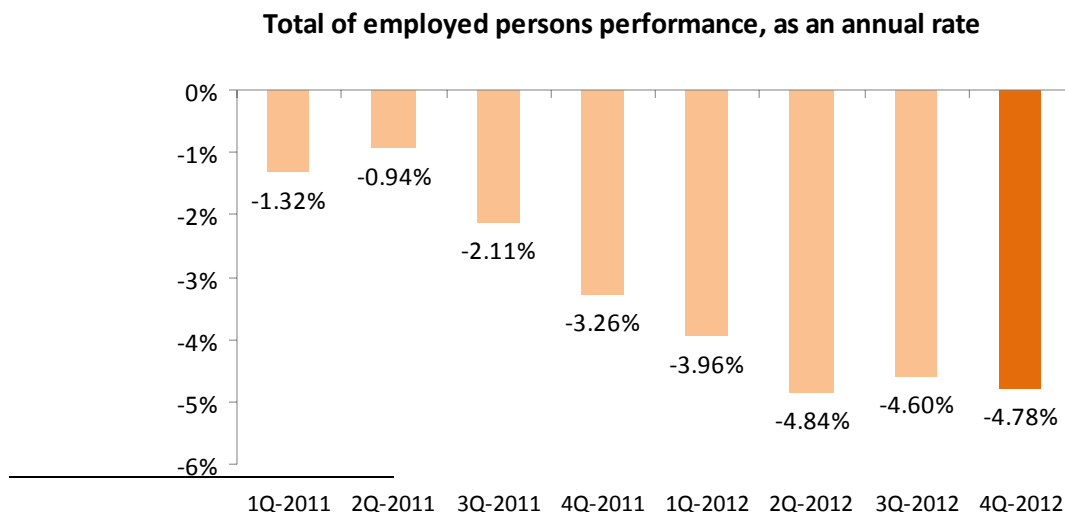
The quarterly employment rate was slightly more negative this quarter as compared to the same period of last year.



By sex, the drop in employment was greater among men (231,900 fewer employed men) than among women (131,400 fewer employed women). By nationality, the number of employed foreign nationals decreased by 89,000, while that of Spaniards decreased by 274,300.

The decrease in employment affects to every group of age, especially to those of 20-24 years of age (100,000 fewer employed persons) and those of 25-29 and 30-34 years of age (with losses of more than 81,000 employed persons)

In the last 12 months, employment has dropped by 850,500 persons, (569,000 men and 281,500 women). The annual variation rate of employment was -4.78% this quarter, 18 hundredths better than that registered the previous quarter.



The number of employed persons increased in *Agriculture*, registering 63,700 more employed persons. In contrast, employment decreased in *Services* (305,600 fewer employed persons), *Construction* (62,900) and *Industry* (58,500).

Full-time employment decreased by 473,400 persons this quarter, whilst part-time employed persons increased by 110,100. The percentage of persons working part-time increased more than half-a-point, reaching 15.33%.

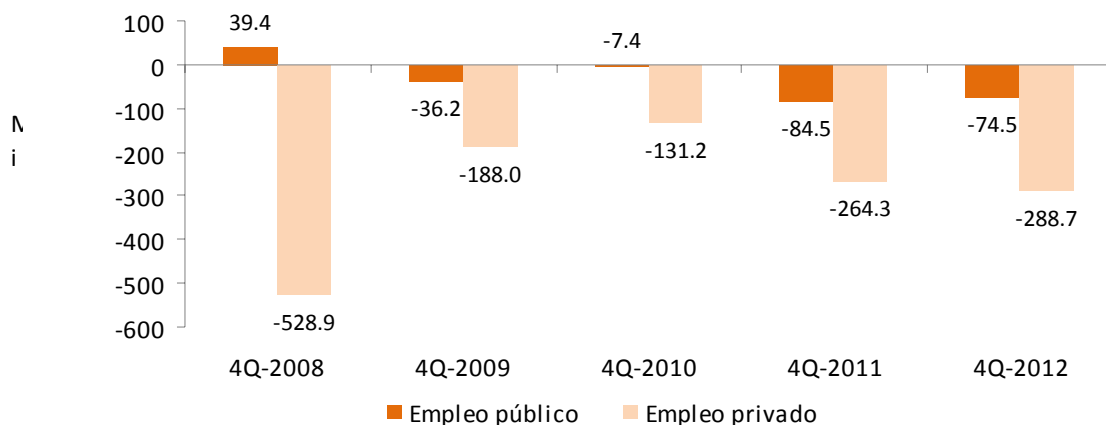
The number of self-employed workers decreased by 55,400 persons this fourth quarter of 2012. Among them, 14,800 were either independent workers or businesspersons without wage earners.

The number of wage earners decreased by 307,700. Those with a permanent contract decreased by 91,100, and those of wage earners with temporary contracts decreased by 216,600. The temporary employment rate increased more than one point, standing at 23.02%.

The number of wage earners dropped by 903,700 over the last 12 months, whereas the number of self-employed workers increased by 53,300.

Private employment* decreased by 288,700 persons this quarter and stood at 14,039,900. In turn, public employment decreased by 74,500, standing at 2,917,200.

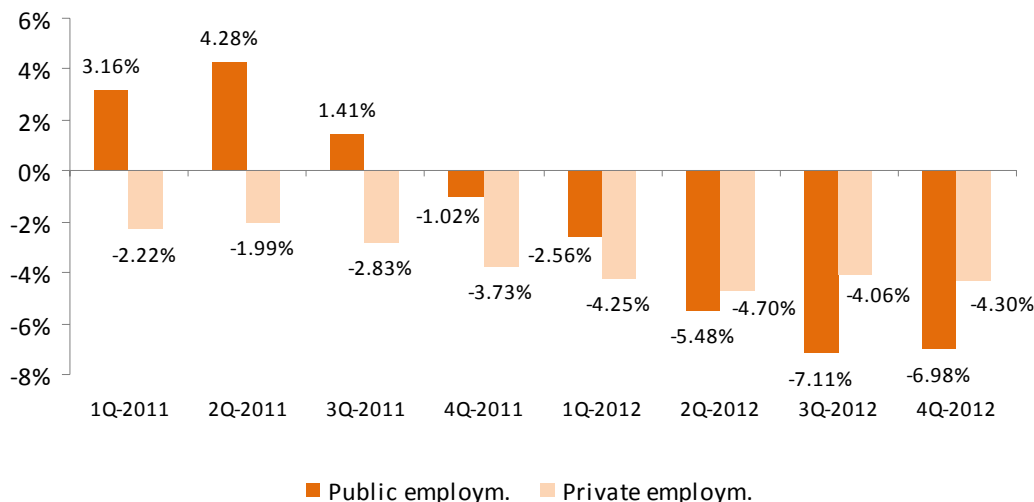
**Employment qoq performance by the nature of the employer, in thousands
(variation of 4Q on 3Q of the same year)**



Both public and private employment showed negative annual variation rates. Public employment registered a -6.98% rate, while employment decreased at a rate of 4.30% in the private sector.

* Employment in the private sector includes: wage earners from the private sector, employers, independent workers and businesspersons without wage earners, members of a cooperative, family assistance and other professional situations. Employment in the public sector includes all the wage earners of public enterprises and of the National and Regional Administrations, including both workers contributing to the SS and those attached to an Insurance society.

Employment performance by the nature of the employer, as an annual rate

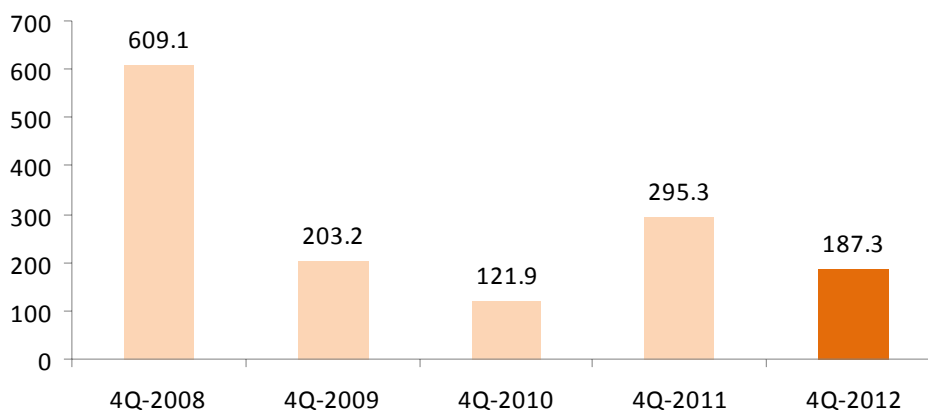


Unemployment and the unemployment rate

Unemployment increased by 187,300 persons this quarter, standing at 5,965,400. Over the last year, the total figure of unemployed persons increased by 691,700 persons.

Comparing the performance of unemployment this quarter to the same period of previous years it is worth noting in that the quarterly increase of unemployment was lower than that registered in the fourth quarter of 2011.

Unemployment qoq performance, in thousands (variation of the 4Q on 3Q of the same year)



The unemployment rate rose one point, as compared with the third quarter of 2012, standing at 26.02%.

By sex, unemployment increased by 71,100 among men and 116,200 among women. The male unemployment rate increased 89 hundredths, reaching 25.58%, whilst the female rate

increased 1.14 points, and stood at 26.55%. The composition of unemployment observed since the year 2008 remained practically unaltered, with relatively little distance between the male and female rates, and a greater number of unemployed men than unemployed women.

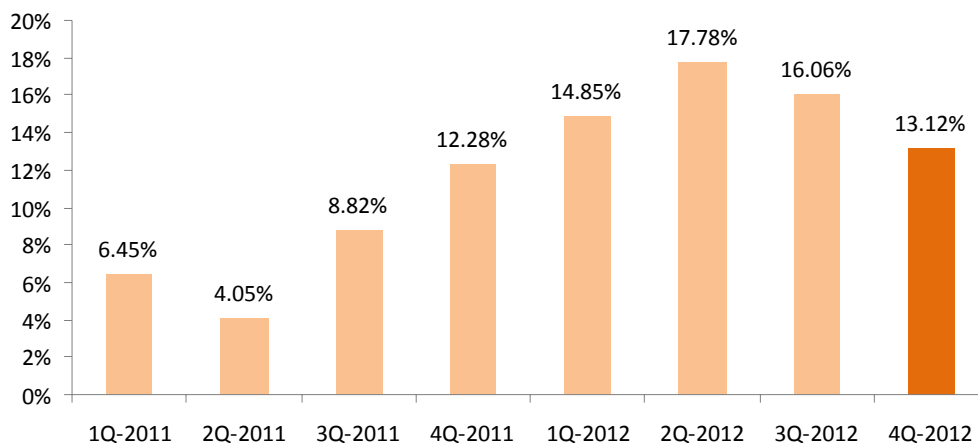
By nationality, unemployment increased by 147,800 Spaniards and decreased by 39,400 foreign nationals. The unemployment rate for the foreign population was 36.53%, 12.3 points higher than that of persons with Spanish nationality (24.23%).

Unemployment decreased in *Agriculture* (31,200 fewer unemployed persons), in *Construction* (17,900 fewer) and in *Industry* (14,300 fewer). Conversely, unemployment increased by 99,900 in *Services*. Unemployment also increased among those persons who lost their job over a year ago (213,800 more), and it decreased among those seeking their first job (63,000 fewer).

The number of unemployed persons increased in all sectors in the last 12 months, except in *Construction* (64,800 fewer). Unemployed persons who lost their job over a year ago increased by 470,700.

Regarding annual performance, the unemployment rate (13.12%) was moderated, as compared with that from the previous quarter.

Total of unemployed persons performance, as an annual rate

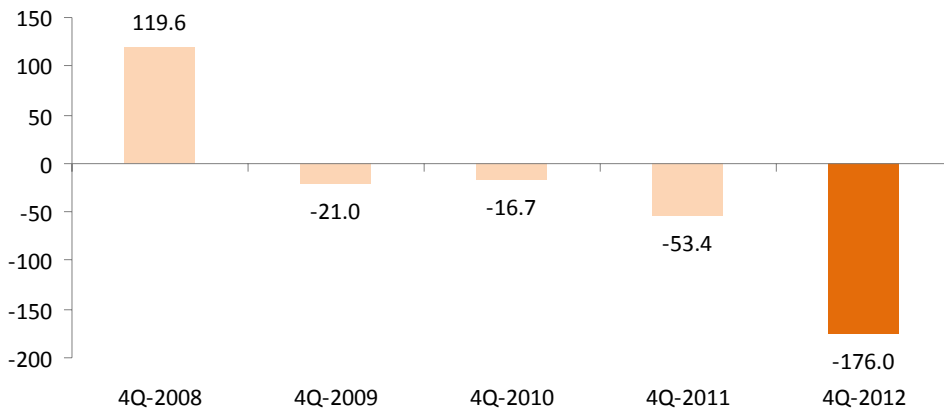


Economically active population and the activity rate

The economically active population experienced a decrease of 176,000 persons in the fourth quarter of 2012, standing at 22,922,400 persons. In annual terms, the number of economically active persons decreased by 158,700 persons.

The decrease in the number of economically active persons in the fourth quarter of 2012 was great and highlighted the downward trend observed in the fourth quarters since 2008.

Activity qoq performance, in thousands (variation of the 4Q on the 3Q)

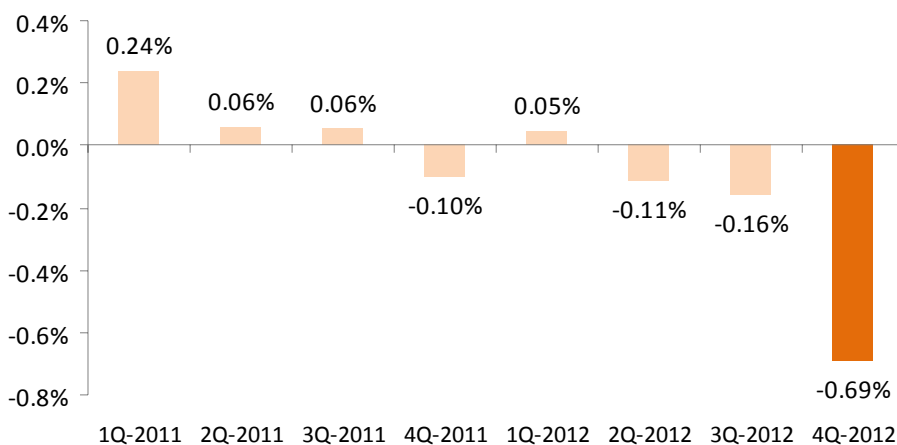


The economic activity rate decreased 32 hundredths, reaching 59.80%. The female activity rate remained almost without variation (53.42%), while the male rate decreased 66 hundredths and reached 66.52%.

The economic activity rate of Spaniards decreased 0.35, reaching 57.82, while the rate for foreign nationals increased 12 hundredths, standing at 74.79 this quarter. The distance between the activity rates of Spaniards and foreign nationals was almost 17 points, in favour of the latter, this circumstance being explained by the different age structures of the two populations.

The annual variation rate presented a downward trend over the last two years, only interrupted in the first quarter of 2012.

Total economically active persons, as an annual rate



Mobility as related to economic activity

The percentage of employed persons who were inactive in the previous quarter was now 5.03%, 27 hundredths less than that recorded in the third quarter of 2012.

The proportion of unemployed persons who were employed three months ago increased 1.30 points, reaching 16.47%. The percentage of unemployed persons for the fourth quarter of 2012 who were already unemployed three months prior increased 62 hundredths, standing at 68.26%. The percentage of unemployed persons who were inactive three months ago decreased 1.92 points, up to 15.27%.

Households

In the fourth quarter, there were 17,406,000 households in Spain, experiencing a decrease of 65,800, as compared with the third quarter.

The number of households in which all economically active members were unemployed, increased by 95,800, standing at 1,833,700.

The number of households in which all of the economically active members were employed decreased by 187,300, reaching 8,334,300.

In an interannual comparison, the number of households in which all economically active persons were unemployed increased by 258,700, and the number of those in which all economically active members were employed decreased by 511,700.

Results by Autonomous Community

No Autonomous Community registered a significant increase in employment.

The greatest decreases in employment were registered in Comunidad de Madrid (74,200 fewer employed persons), Cataluña (73,100), and Illes Balears (57,800).

During the last year only Illes Balears registered an increase in employment (14,100 more employed persons). In contrast, the greatest decreases in employment during the last 12 months were registered in Cataluña (195,400 fewer employed persons), Andalucía (169,600) and Comunitat Valenciana (87,200).

Illes Balears is the only Autonomous Community with a positive employment interannual variation rate (3.23%). Aragón (-0.90%), Canarias (-1.87%) and Comunidad de Madrid (-2.24%) have negative interannual rate less unfavourable. In turn, Castilla-La Mancha (-8.92%), País Vasco (-7.12%), Cataluña (-6.50%) and Andalucía (-6.17%) registered the greatest interannual rate drops in employment.

Employment registered a significant decrease in Canarias this quarter, with 9,800 fewer unemployed persons.

In turn, the greatest increases in unemployment were registered in Cataluña (44,700 more unemployed persons), Comunidad de Madrid (37,100) and Illes Balears (21,600).

The greatest annual increases in unemployment were registered in Andalucía (194,100 more unemployed persons), Cataluña (109,700) and Comunitat Valenciana (58,800).

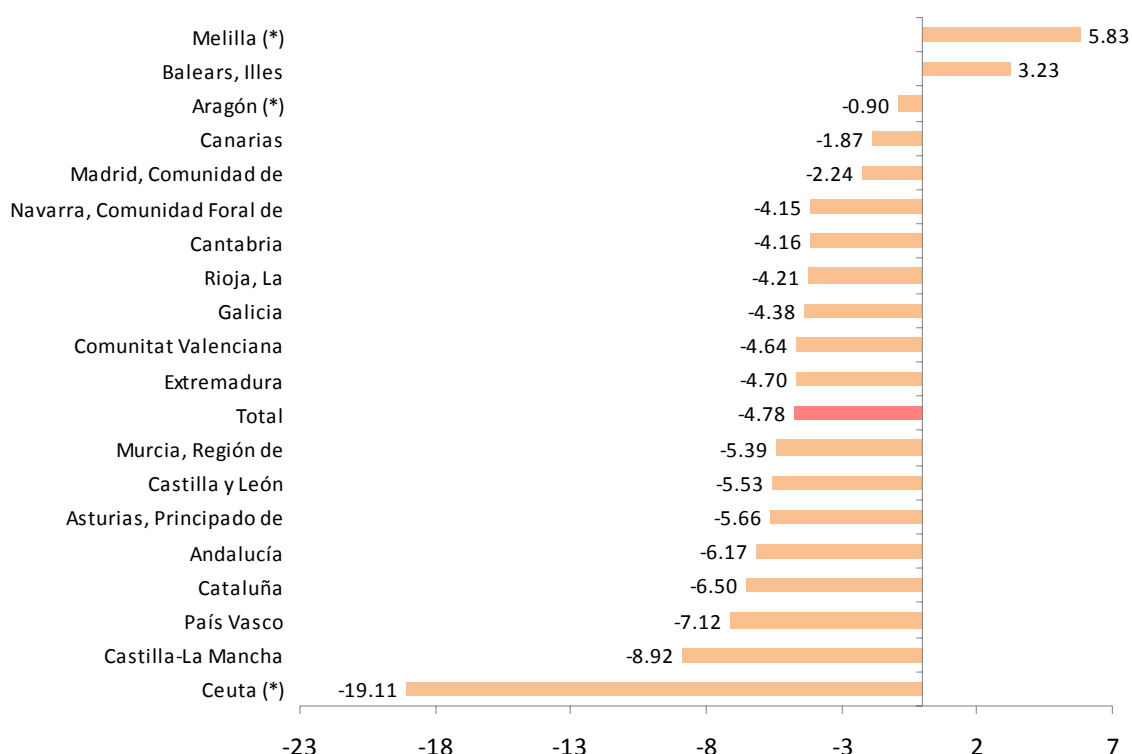
País Vasco maintained an unemployment rate lower than 16%. At the other end of the spectrum, Andalucía registered rates higher than 35%.

The withdrawal of economically active persons in the labour market was particularly significant this quarter in Comunidad de Madrid (37,000 fewer economically active persons), in Illes Balears (36,300) and in Cataluña (28,300).

In the last 12 months, the number of economically active persons decreased by 85,700 persons in Cataluña and 36,600 in País Vasco. During this period, the greatest increases were in Andalucía (24,500 more) and Extremadura (15,800).

The economic activity rates this quarter ranged between the 65.02% recorded in Illes Balears, and the 52.37% registered in Principado de Asturias.

Employment annual variation rates, by Autonomous Community (%)



(*) These rates corresponds to absolute values under 5,000, that have great variatios due to the sample error

Results by province

The provincial results summary of the EAPS may be accessed via the following link:

http://www.ine.es/en/daco/daco42/daco4211/epapro0412_en.pdf

All of the provincial information from this survey may be accessed via the following links:

- In the INEbase database
<http://www.ine.es/jaxiBD/menu.do?L=1&divi=EPA&his=0&type=db>
- In the TEMPUS database
<http://www.ine.es/menu/redir/GSTConsul.shtml?divi=EPA>

Results of 2012 calculated as annual average

Next 21st February, the INE will publish the results of 2012 calculated as the annual average of the four quarters of the year, together with the corresponding press release.

Methodological note

General features

The Economically Active Population Survey (EAPS) is a continuous sample-based study aimed at family dwellings, and which has been conducted since 1964.

The additional sample collected by the *Galician Statistics Institute* (IGE) has been incorporated as of the third quarter of 2009, using the same fieldwork system and identical methodology to that of the INE. Therefore, apart from the 3,588 census sections that have made up the sample for the whole of Spain since 2005, we must take into account the 234 additional sections in the Autonomous Community of Galicia. Since the third quarter of 2009, the EAPS sample is made up of 3,822 census sections from the more than 30,000 census sections into which Spain is divided. An average of 18 households are surveyed in each one, except in the provinces of Barcelona, Madrid, Sevilla, Valencia and Zaragoza, where the number of households surveyed is 22. Thus, the sample size is approximately 65,000 dwellings, providing information on some 180,000 persons. The data is collected via personal and telephone interviews. The information is carefully filtered and computer-processed. Results are obtained within the month following the end of the reference quarter for the data.

Main definitions

(Economically) Active persons: persons aged 16 years old and over who, during the reference week (the week prior to that when the interview is held), supplied labour for the production of goods and services, or were available to do so and in conditions to incorporate themselves into said production. They are divided into employed and unemployed persons.

Employed persons: persons aged 16 years old and over who, during the reference week, worked for at least one hour in exchange for payment (salary, wage, business benefit, etc.) in cash or in kind. Persons who, being employed, had been temporarily absent from their job due to illness, holidays, etc., are also considered employed persons.

Employed persons are classified, considering their professional status, as non-wage earners (employers, businesspersons without wage earners and independent workers, cooperative members, family assistance) and wage earners (public or private).

Considering the length of the working day, employed persons are classified as full-time and part-time employed persons. The usual working week may not be shorter than 30 hours in the first case, nor exceed 35 hours in the second.

Wage earners are classified as permanent and temporary. For the latter, the end of their contract or work relationship is set by means of objective conditions, such as the expiry of a certain period of time, the completion of a specific task, etc.

A significant category within employment is that of **time-related underemployment**, defined in the 16th International Labour Statisticians Conference (Geneva, 1998). The EAPS considers persons suffering time-related underemployment as employed persons who would like to work more hours, who are available to work more hours and whose effective working hours in the reference week are less than the number of hours usually worked by employed persons working full-time in the same branch of activity as that in which the underemployed person develops his/her main job.

Unemployed persons: persons aged 16 years old and over who, during the reference week, were jobless, available for work, and actively looking for a job. Persons who might have already found a job and are waiting to start are also considered to be unemployed, provided that they meet the first two conditions.

According to European Commission Regulation 1897/2000, the following are considered to be active search methods, in the four weeks prior to the interview:

- Being in contact with a public employment office for the purpose of finding work, whatever part they play in the initiative (the renewal of registration due to purely administrative reasons does not constitute active planning).
- Being in contact with a private office (temporary employment agency, specialised hiring agency, etc.) with the objective of finding work.
- Having sent an application directly to employers.
- Having searched via personal relations and trade unions, etc.
- Having advertised oneself or responded to newspaper advertisements.
- Having studied job vacancies.
- Having taken part in a test, public exam or interview in the framework of a contracting procedure.
- Having looked for land, premises or material.
- Having taken steps to obtain permits, licences or financial resources.

(Economically) Inactive persons: persons aged 16 years old and over not included in any of the above categories.

Economically Active Population Survey Fourth Quarter 2012

National results

(Continues)

	Current quarter	Variation on previous quarter		Variation on same quarter, previous year	
		Difference	Percentage	Difference	Percentage
1. Population aged 16 years and over by sex and labour status					
BOTH SEXES					
Population aged 16 years and over	38.333,0	-87,3	-0,23	-175,1	-0,45
Active population	22.922,4	-176,0	-0,76	-158,7	-0,69
- Employed	16.957,1	-363,3	-2,10	-850,5	-4,78
- Unemployed	5.965,4	187,3	3,24	691,7	13,12
Inactive	15.410,6	88,7	0,58	-16,4	-0,11
Activity rate	59,80	-0,32	-	-0,14	-
Unemployment rate	26,02	1,01	-	3,18	-
Population aged 16 to 64 years	30.340,4	-116,8	-0,38	-318,1	-1,04
Activity rate (16-64)	75,00	-0,28	-	0,26	-
Unemployment rate (16-64)	26,18	1,01	-	3,19	-
Employment rate (16-64)	55,37	-0,97	-	-2,19	-
MALES					
Population aged 16 years and over	18.656,2	-56,2	-0,30	-135,1	-0,72
Active population	12.411,0	-160,8	-1,28	-234,7	-1,86
- Employed	9.236,6	-231,9	-2,45	-569,0	-5,80
- Unemployed	3.174,4	71,1	2,29	334,3	11,77
Inactive	6.245,2	104,6	1,70	99,5	1,62
Activity rate	66,52	-0,66	-	-0,77	-
Unemployment rate	25,58	0,89	-	3,12	-
Population aged 16 to 64 years	15.216,9	-71,6	-0,47	-203,0	-1,32
Activity rate (16-64)	80,94	-0,67	-	-0,47	-
Unemployment rate (16-64)	25,74	0,90	-	3,13	-
Employment rate (16-64)	60,10	-1,24	-	-2,89	-
FEMALES					
Population aged 16 years and over	19.676,8	-31,1	-0,16	-40,0	-0,20
Active population	10.511,4	-15,2	-0,14	75,9	0,73
- Employed	7.720,4	-131,4	-1,67	-281,5	-3,52
- Unemployed	2.791,0	116,2	4,34	357,4	14,69
Inactive	9.165,4	-15,9	-0,17	-115,9	-1,25
Activity rate	53,42	0,01	-	0,49	-
Unemployment rate	26,55	1,14	-	3,23	-
Population aged 16 to 64 years	15.123,5	-45,2	-0,30	-115,1	-0,76
Activity rate (16-64)	69,03	0,13	-	1,02	-
Unemployment rate (16-64)	26,70	1,14	-	3,24	-
Employment rate (16-64)	50,60	-0,69	-	-1,45	-

2. Spanish population⁽¹⁾ aged 16 years and over by labour status

SPANISH POPULATION AGED 16 YEARS AND OVER	33.861,4	-13,6	-0,04	-5,9	-0,02
Active population	19.578,1	-126,4	-0,64	16,8	0,09
- Employed	14.834,6	-274,3	-1,82	-678,8	-4,38
- Unemployed	4.743,5	147,8	3,22	695,7	17,19
Inactive	14.283,3	112,8	0,80	-22,8	-0,16
Activity rate	57,82	-0,35	-	0,06	-
Unemployment rate	24,23	0,91	-	3,54	-

⁽¹⁾ including dual nationality

January 24th 2013

National results

(Continuation)

	Current quarter	Variation on previous quarter		Variation on same quarter, previous year	
		Difference	Percentage	Difference	Percentage
3. Foreign population aged 16 years and over by labour status					
FOREIGN POPULATION AGED 16 YEARS AND OVER	4.471,6	-73,7	-1,62	-169,2	-3,65
Active population	3.344,3	-49,6	-1,46	-175,6	-4,99
- Employed	2.122,5	-89,0	-4,02	-171,6	-7,48
- Unemployed	1.221,8	39,4	3,34	-4,0	-0,32
Inactive	1.127,3	-24,1	-2,10	6,4	0,57
Activity rate	74,79	0,12	-	-1,06	-
Unemployment rate	36,53	1,70	-	1,71	-

4. Employed by sex, age group and economic sector

BOTH SEXES	16.957,1	-363,3	-2,10	-850,5	-4,78
16 to 19 years	67,6	-26,2	-27,98	-24,7	-26,77
20 to 24 years	689,6	-100,0	-12,67	-154,6	-18,32
25 to 29 years	1.640,4	-81,2	-4,72	-260,7	-13,71
30 to 34 years	2.396,6	-81,6	-3,29	-244,4	-9,25
35 to 39 years	2.759,9	-39,2	-1,40	-72,7	-2,57
40 to 44 years	2.552,0	-21,7	-0,84	-43,3	-1,67
45 to 49 years	2.386,6	13,4	0,56	-30,4	-1,26
50 to 54 years	2.042,2	11,5	0,57	-11,7	-0,57
55 and over	2.422,3	-38,1	-1,55	-7,9	-0,33
MALES	9.236,6	-231,9	-2,45	-569,0	-5,80
16 to 19 years	39,3	-14,5	-27,01	-13,5	-25,58
20 to 24 years	352,8	-58,4	-14,20	-72,1	-16,98
25 to 29 years	845,4	-25,2	-2,89	-136,7	-13,92
30 to 34 years	1.254,8	-65,9	-4,99	-161,8	-11,42
35 to 39 years	1.519,8	-16,0	-1,04	-51,8	-3,30
40 to 44 years	1.394,6	-29,6	-2,08	-55,4	-3,82
45 to 49 years	1.305,0	-5,0	-0,38	-39,7	-2,95
50 to 54 years	1.128,9	0,8	0,07	-18,2	-1,59
55 and over	1.396,1	-18,0	-1,27	-19,7	-1,39
FEMALES	7.720,4	-131,4	-1,67	-281,5	-3,52
16 to 19 years	28,3	-11,7	-29,29	-11,2	-28,36
20 to 24 years	336,8	-41,6	-11,00	-82,5	-19,67
25 to 29 years	795,0	-56,1	-6,59	-123,9	-13,49
30 to 34 years	1.141,8	-15,7	-1,36	-82,6	-6,74
35 to 39 years	1.240,1	-23,2	-1,84	-20,9	-1,66
40 to 44 years	1.157,4	7,9	0,68	12,1	1,06
45 to 49 years	1.081,5	18,4	1,73	9,3	0,87
50 to 54 years	913,3	10,7	1,19	6,5	0,71
55 and over	1.026,2	-20,1	-1,92	11,7	1,16
TOTAL EMPLOYED	16.957,1	-363,3	-2,10	-850,5	-4,78
Agriculture	784,0	63,7	8,84	-24,4	-3,02
Industry	2.383,5	-58,5	-2,39	-142,8	-5,65
Construction	1.073,9	-62,9	-5,53	-203,0	-15,90
Services	12.715,6	-305,6	-2,35	-480,2	-3,64

National results

(Continuation)

	Current quarter	Variation on previous quarter		Variation on same quarter, previous year	
		Difference	Percentage	Difference	Percentage
5. Employed by professional status, type of contract, public / private sectors and working hours					
TOTAL EMPLOYED	16.957,1	-363,3	-2,10	-850,5	-4,78
BY PROFESSIONAL STATUS					
Self-employed workers	3.022,0	-55,4	-1,80	53,3	1,80
- Employers	884,5	-49,4	-5,29	-19,1	-2,11
- Independent workers	2.001,5	14,8	0,75	96,6	5,07
- Cooperatives members	24,3	0,1	0,40	-6,0	-19,70
- Family workers	111,7	-20,9	-15,76	-18,3	-14,05
Employees	13.925,5	-307,7	-2,16	-903,7	-6,09
- With a permanent job	10.720,3	-91,1	-0,84	-404,5	-3,64
- With a temporary job	3.205,2	-216,6	-6,33	-499,2	-13,48
Others	9,6	-0,2	-2,05	-0,1	-0,89
BY PUBLIC / PRIVATE SECTORS					
Employed by public sector	2.917,2	-74,5	-2,49	-218,9	-6,98
Employed by private sector	14.039,9	-288,7	-2,01	-631,5	-4,30
BY WORKING HOURS					
Full-time employed	14.358,4	-473,4	-3,19	-990,6	-6,45
Males	8.607,4	-222,7	-2,52	-607,7	-6,59
Females	5.751,0	-250,7	-4,18	-382,9	-6,24
Part-time employed	2.598,7	110,1	4,43	140,2	5,70
Males	629,3	-9,1	-1,43	38,7	6,56
Females	1.969,4	119,3	6,45	101,4	5,43

*) Private employment are all persons in employment other than public employees. Namely: private employees, employers, independent workers, cooperative members, family workers and other professional status.

6. Unemployed by sex, age group, and economic sector

BOTH SEXES	5.965,4	187,3	3,24	691,7	13,12
16 to 19 years	192,7	-48,9	-20,23	-16,0	-7,67
20 to 24 years	737,5	8,9	1,22	62,1	9,20
25 to 54 years	4.504,4	200,5	4,66	562,4	14,27
55 and over	530,7	26,8	5,32	83,2	18,60
MALES	3.174,4	71,1	2,29	334,3	11,77
16 to 19 years	105,9	-27,4	-20,55	-13,1	-11,00
20 to 24 years	397,8	8,1	2,07	28,2	7,64
25 to 54 years	2.363,4	72,3	3,15	280,5	13,46
55 and over	307,3	18,1	6,27	38,7	14,42
FEMALES	2.791,0	116,2	4,34	357,4	14,69
16 to 19 years	86,9	-21,5	-19,84	-2,9	-3,25
20 to 24 years	339,7	0,9	0,26	33,9	11,08
25 to 54 years	2.141,0	128,2	6,37	281,9	15,16
55 and over	223,4	8,7	4,03	44,5	24,88
TOTAL UNEMPLOYED	5.965,4	187,3	3,24	691,7	13,12
Agriculture	267,2	-31,2	-10,44	57,6	27,47
Industry	294,8	-14,3	-4,63	47,9	19,42
Construction	387,9	-17,9	-4,42	-64,8	-14,31
Services	1.737,3	99,9	6,10	135,2	8,44
Lost their job more than 1 year ago	2.789,9	213,8	8,30	470,7	20,30
First job seekers	488,2	-63,0	-11,44	45,0	10,16

EAPS - (ANNEXE TO THE TABLES) Fourth Quarter 2012 (3/7)

National results

(Conclusion)

	Current quarter	Variation on previous quarter		Variation on same quarter, previous year	
		Difference	Percentage	Difference	Percentage

7. Unemployment rate by relationship with the reference person

TOTAL	26,02	1,01	-	3,18	-
Reference person	21,38	0,98	-	2,30	-
Spouse or partner	21,80	0,92	-	2,95	-
Child	43,02	1,39	-	5,67	-
Other relatives	36,85	3,38	-	4,78	-
Unrelated persons	23,52	-1,63	-	1,43	-

8. Household data

TOTAL HOUSEHOLDS	17.406,0	-65,8	-0,38	11,6	0,07
Households with at least one active member	12.945,6	-59,4	-0,46	-64,4	-0,49
- All member employed	8.334,3	-187,3	-2,20	-511,7	-5,78
- All member unemployed	1.833,7	95,8	5,51	258,7	16,43
Households without any active population	4.460,4	-6,4	-0,14	76,0	1,73

Mobility according to activity in current and previous quarter

Classification in previous quarter	Total	Classification in current quarter		
		Employed	Unemployed	Inactive
BOTH SEXES				
Total	100,00	100,00	100,00	100,00
Employed	45,12	92,37	16,47	3,53
Unemployed	14,55	5,03	68,26	5,00
Inactive	40,33	2,60	15,27	91,47
MALES				
Total	100,00	100,00	100,00	100,00
Employed	50,78	93,58	16,92	3,93
Unemployed	15,90	4,82	72,29	4,98
Inactive	33,32	1,60	10,79	91,09
FEMALES				
Total	100,00	100,00	100,00	100,00
Employed	39,79	90,93	15,97	3,26
Unemployed	13,28	5,28	63,79	5,02
Inactive	46,94	3,80	20,24	91,72

Grossing up factors of current quarter (forward analysis)

Results by Autonomous Communities and Cities

(Continues)

	Current quarter	Variation on previous quarter		Variation on same quarter, previous year		
		Difference	Percentage	Difference	Percentage	
1. Population aged 16 years and over						
TOTAL	38.333,0	-87,3	-0,23	-175,1	-0,45	
Andalucía	6.799,6	-4,1	-0,06	6,9	0,10	
Aragón	1.101,5	-2,2	-0,20	-7,4	-0,66	
Asturias, Principado de	917,4	-2,8	-0,31	-7,8	-0,84	
Balears, Illes	912,2	1,9	0,21	8,7	0,96	
Canarias	1.781,3	4,9	0,28	17,3	0,98	
Cantabria	490,4	-1,5	-0,30	-3,2	-0,65	
Castilla y León	2.114,0	-5,5	-0,26	-19,9	-0,93	
Castilla-La Mancha	1.692,5	-5,3	-0,31	-13,2	-0,77	
Cataluña	5.981,4	-11,2	-0,19	-71,7	-1,18	
Comunitat Valenciana	4.166,1	-9,6	-0,23	-9,3	-0,22	
Extremadura	906,5	-0,8	-0,09	-1,5	-0,17	
Galicia	2.360,4	-3,6	-0,15	-12,9	-0,54	
Madrid, Comunidad de	5.247,6	-35,0	-0,66	-28,1	-0,53	
Murcia, Región de	1.188,3	-6,0	-0,50	-5,4	-0,45	
Navarra, Comunidad Foral de	511,9	-0,8	-0,15	-2,8	-0,54	
País Vasco	1.784,5	-5,0	-0,28	-23,3	-1,29	
Rioja, La	258,2	-1,2	-0,45	-3,2	-1,23	
Ceuta	60,4	-0,1	-0,12	0,2	0,29	
Melilla	58,7	0,3	0,52	1,5	2,62	

2. Active population

TOTAL	22.922,4	-176,0	-0,76	-158,7	-0,69
Andalucía	4.022,5	1,3	0,03	24,5	0,61
Aragón	657,4	-1,2	-0,18	7,7	1,18
Asturias, Principado de	480,4	-4,7	-0,97	1,7	0,35
Balears, Illes	593,1	-36,3	-5,76	11,6	2,00
Canarias	1.117,6	-6,8	-0,60	12,2	1,11
Cantabria	278,5	1,8	0,63	-0,7	-0,27
Castilla y León	1.159,9	-26,7	-2,25	-14,5	-1,24
Castilla-La Mancha	987,7	-1,2	-0,12	-16,7	-1,67
Cataluña	3.696,6	-28,3	-0,76	-85,7	-2,27
Comunitat Valenciana	2.492,0	-6,8	-0,27	-28,4	-1,13
Extremadura	509,9	-1,4	-0,28	15,8	3,20
Galicia	1.303,3	-8,3	-0,64	-9,9	-0,76
Madrid, Comunidad de	3.347,4	-37,0	-1,09	-19,4	-0,58
Murcia, Región de	732,0	-16,3	-2,18	-11,9	-1,60
Navarra, Comunidad Foral de	306,9	-2,1	-0,67	-0,9	-0,29
País Vasco	1.022,2	3,2	0,32	-36,6	-3,45
Rioja, La	149,5	-2,7	-1,80	-6,5	-4,17
Ceuta	33,4	-1,5	-4,26	-2,8	-7,81
Melilla	32,2	-0,9	-2,59	1,8	6,09

* Data below 5000 are subject to strong variations, due to sampling error

Results by Autonomous Communities and Cities (Conclusion)

	Current quarter	Variation on previous quarter		Variation on same quarter, previous year	
		Difference	Percentage	Difference	Percentage
3. Employed					
TOTAL	16.957,1	-363,3	-2,10	-850,5	-4,78
Andalucía	2.580,0	-17,1	-0,66	-169,6	-6,17
Aragón	535,5	0,4	0,07	-4,8	-0,90
Asturias, Principado de	366,2	-12,9	-3,41	-22,0	-5,66
Balears, Illes	449,0	-57,8	-11,41	14,1	3,23
Canarias	749,2	3,0	0,40	-14,3	-1,87
Cantabria	225,0	-8,3	-3,55	-9,8	-4,16
Castilla y León	919,1	-40,4	-4,21	-53,8	-5,53
Castilla-La Mancha	691,2	-21,1	-2,97	-67,7	-8,92
Cataluña	2.811,4	-73,1	-2,53	-195,4	-6,50
Comunitat Valenciana	1.791,8	-4,9	-0,27	-87,2	-4,64
Extremadura	336,2	-8,1	-2,35	-16,6	-4,70
Galicia	1.026,0	-21,7	-2,07	-46,9	-4,38
Madrid, Comunidad de	2.682,0	-74,2	-2,69	-61,4	-2,24
Murcia, Región de	515,5	-17,3	-3,24	-29,3	-5,39
Navarra, Comunidad Foral de	254,2	-8,5	-3,24	-11,0	-4,15
País Vasco	859,4	-1,9	-0,22	-65,9	-7,12
Rioja, La	121,5	0,2	0,17	-5,3	-4,21
Ceuta	20,8	0,2	0,92	-4,9	-19,11
Melilla	23,1	0,1	0,51	1,3	5,83

4. Unemployed

TOTAL	5.965,4	187,3	3,24	691,7	13,12
Andalucía	1.442,6	18,3	1,29	194,1	15,54
Aragón	121,9	-1,6	-1,26	12,5	11,42
Asturias, Principado de	114,1	8,2	7,74	23,6	26,13
Balears, Illes	144,1	21,6	17,58	-2,4	-1,66
Canarias	368,4	-9,8	-2,59	26,5	7,75
Cantabria	53,5	10,0	23,08	9,0	20,29
Castilla y León	240,8	13,7	6,02	39,2	19,47
Castilla-La Mancha	296,5	19,9	7,21	50,9	20,74
Cataluña	885,1	44,7	5,32	109,7	14,15
Comunitat Valenciana	700,2	-1,9	-0,28	58,8	9,17
Extremadura	173,6	6,7	3,99	32,4	22,92
Galicia	277,4	13,4	5,07	37,0	15,40
Madrid, Comunidad de	665,3	37,1	5,91	42,0	6,74
Murcia, Región de	216,6	1,0	0,45	17,4	8,75
Navarra, Comunidad Foral de	52,6	6,4	13,92	10,1	23,75
País Vasco	162,8	5,1	3,22	29,3	21,96
Rioja, La	28,0	-2,9	-9,50	-1,2	-4,00
Ceuta	12,6	-1,7	-11,69	2,1	(:)
Melilla	9,1	-1,0	-9,64	0,6	6,8

* Data below 5,000 are subject to strong variations, due to sampling error

(:) The variation percentages calculated from low figures with high sampling errors are not significant

Results by Autonomous Communities and Cities

(Absolute figures in thousands and rates in percentage)

5. Employed and unemployed by sex. Activity and unemployment rates

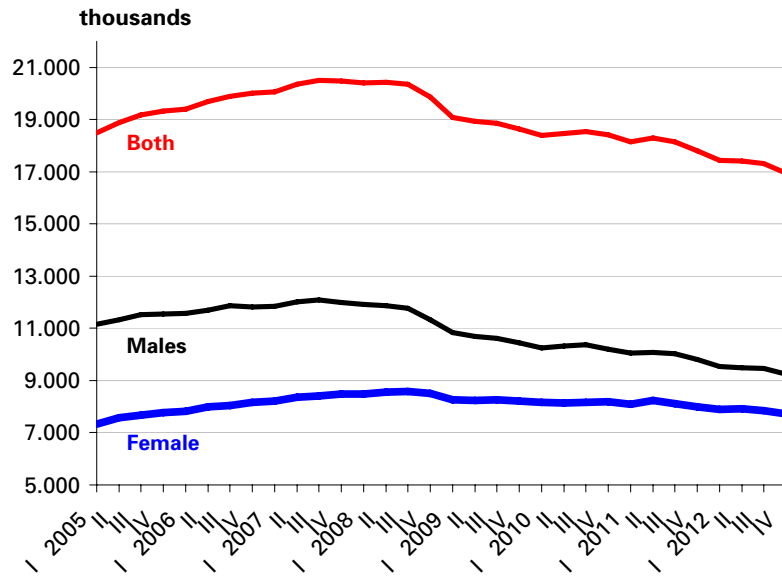
	Both sexes				Males				Females			
	Employed	Unemployed	Activity rate	Unem. rate	Employed	Unemployed	Activity rate	Unem. Rate	Employed	Unemployed	Activity rate	Unem. Rate
TOTAL	16.957,1	5.965,4	59,80	26,02	9.236,6	3.174,4	66,52	25,58	7.720,4	2.791,0	53,42	26,55
Andalucía	2.580,0	1.442,6	59,16	35,86	1.443,1	759,8	66,08	34,49	1.136,8	682,8	52,50	37,52
Aragón	535,5	121,9	59,69	18,55	299,8	59,9	66,36	16,66	235,7	62,0	53,22	20,83
Asturias, Principado de	366,2	114,1	52,37	23,76	195,2	60,0	58,84	23,50	171,0	54,2	46,56	24,05
Balears, Illes	449,0	144,1	65,02	24,30	245,2	78,2	71,43	24,18	203,8	65,9	58,71	24,44
Canarias	749,2	368,4	62,74	32,96	403,9	202,4	68,86	33,39	345,4	166,0	56,76	32,46
Cantabria	225,0	53,5	56,79	19,22	122,4	29,0	63,92	19,18	102,5	24,5	50,12	19,27
Castilla y León	919,1	240,8	54,87	20,76	523,7	123,2	62,25	19,05	395,4	117,6	47,73	22,92
Castilla-La Mancha	691,2	296,5	58,36	30,02	417,9	148,1	66,81	26,16	273,3	148,5	49,89	35,20
Cataluña	2.811,4	885,1	61,80	23,94	1.475,8	481,2	67,81	24,59	1.335,7	404,0	56,20	23,22
Comunitat Valenciana	1.791,8	700,2	59,82	28,10	997,4	382,7	67,36	27,73	794,5	317,5	52,52	28,55
Extremadura	336,2	173,6	56,24	34,06	197,2	90,1	64,22	31,36	139,1	83,6	48,47	37,54
Galicia	1.026,0	277,4	55,22	21,28	542,0	147,5	61,20	21,40	483,9	129,8	49,75	21,15
Madrid, Comunidad de	2.682,0	665,3	63,79	19,88	1.393,0	354,9	70,03	20,31	1.289,0	310,4	58,13	19,41
Murcia, Región de	515,5	216,6	61,60	29,59	293,6	119,4	69,36	28,91	221,8	97,2	53,81	30,46
Navarra, Comunidad Foral de	254,2	52,6	59,95	17,15	138,0	27,7	65,80	16,70	116,2	25,0	54,28	17,68
País Vasco	859,4	162,8	57,28	15,93	453,2	84,5	63,09	15,72	406,2	78,3	51,97	16,16
Rioja, La	121,5	28,0	57,89	18,73	66,9	15,1	64,78	18,39	54,6	12,9	51,27	19,15
Ceuta	20,8	12,6	55,24	37,84	14,2	5,8	65,69	29,12	6,6	6,8	44,65	50,87
Melilla	23,1	9,1	54,79	28,31	14,1	4,9	65,77	25,78	9,0	4,2	44,14	31,97

* Data below 5,000 are subject to strong variations, due to sampling errors

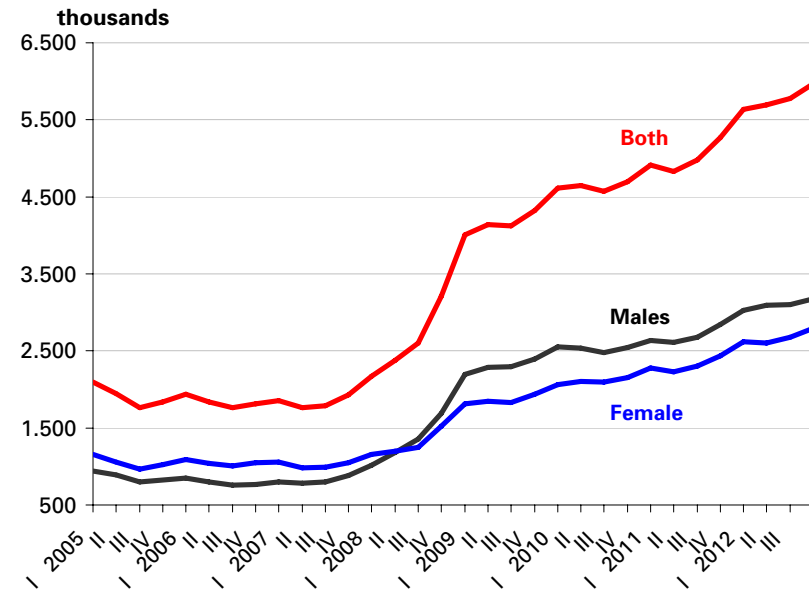
Employed and unemployed by sex

APS Fourth Quarter 2012

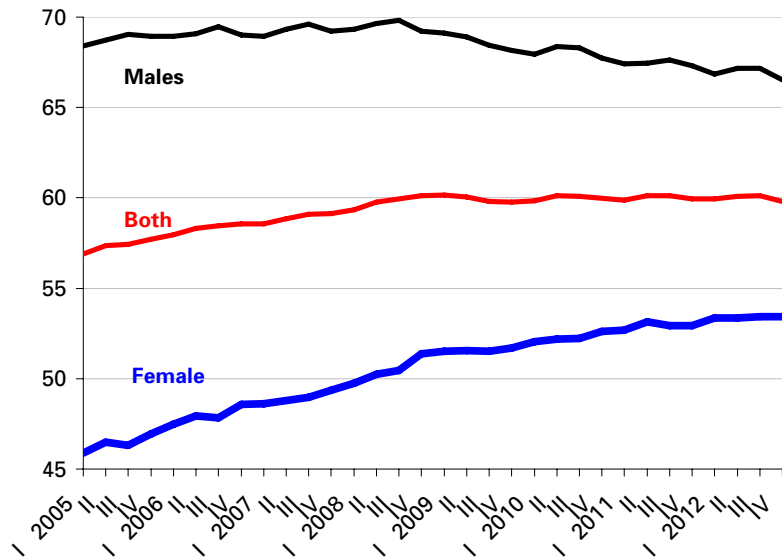
Employment



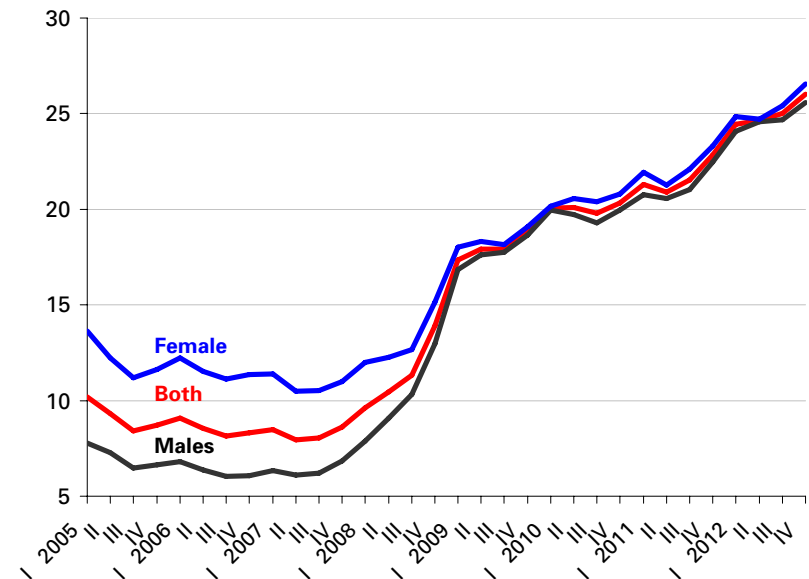
Unemployment



Activity rate



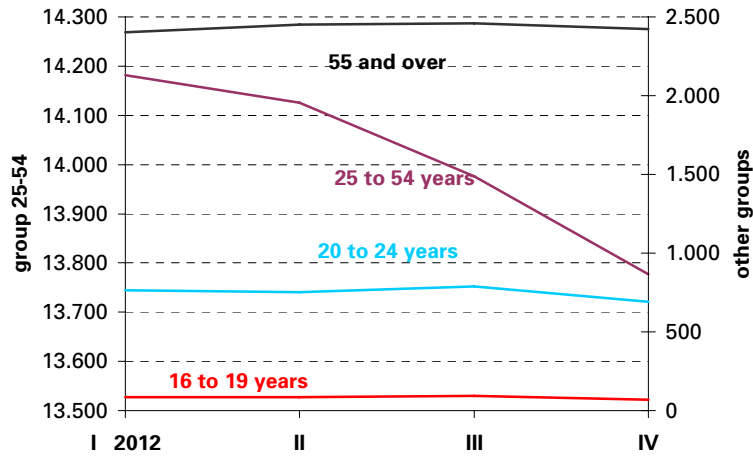
Unemployment rate



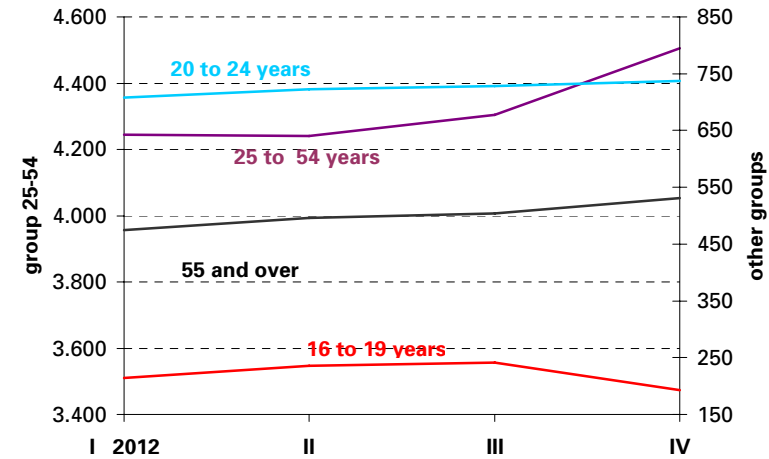
Employed and Unemployed by age

APS Fourth Quarter 2012

Employment (thousands)

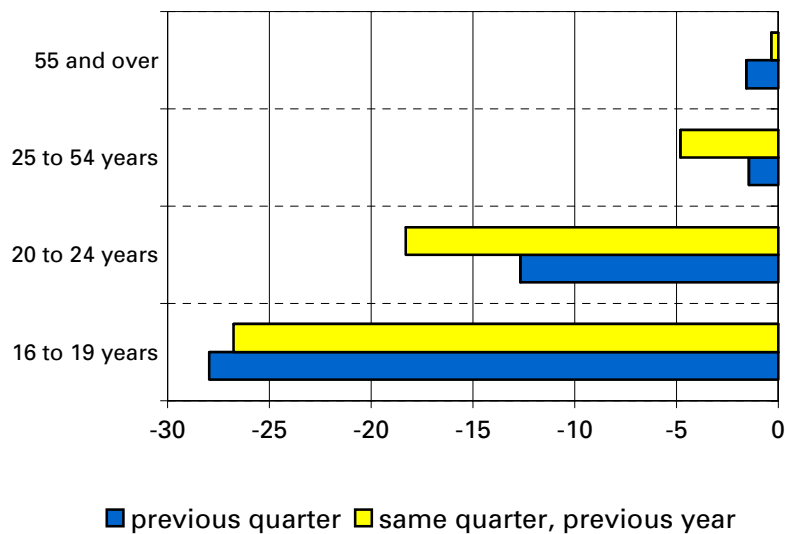


Unemployment (thousands)

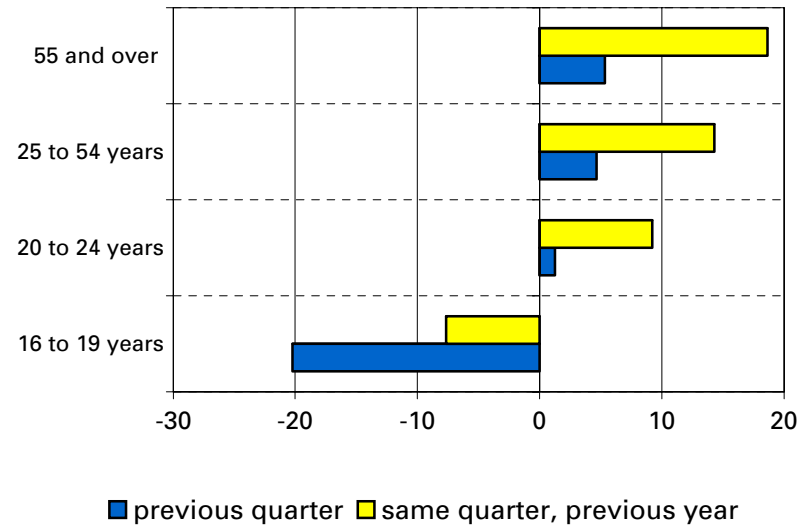


Variation percentages over the previous quarter and over the same quarter of the previous year

Employment

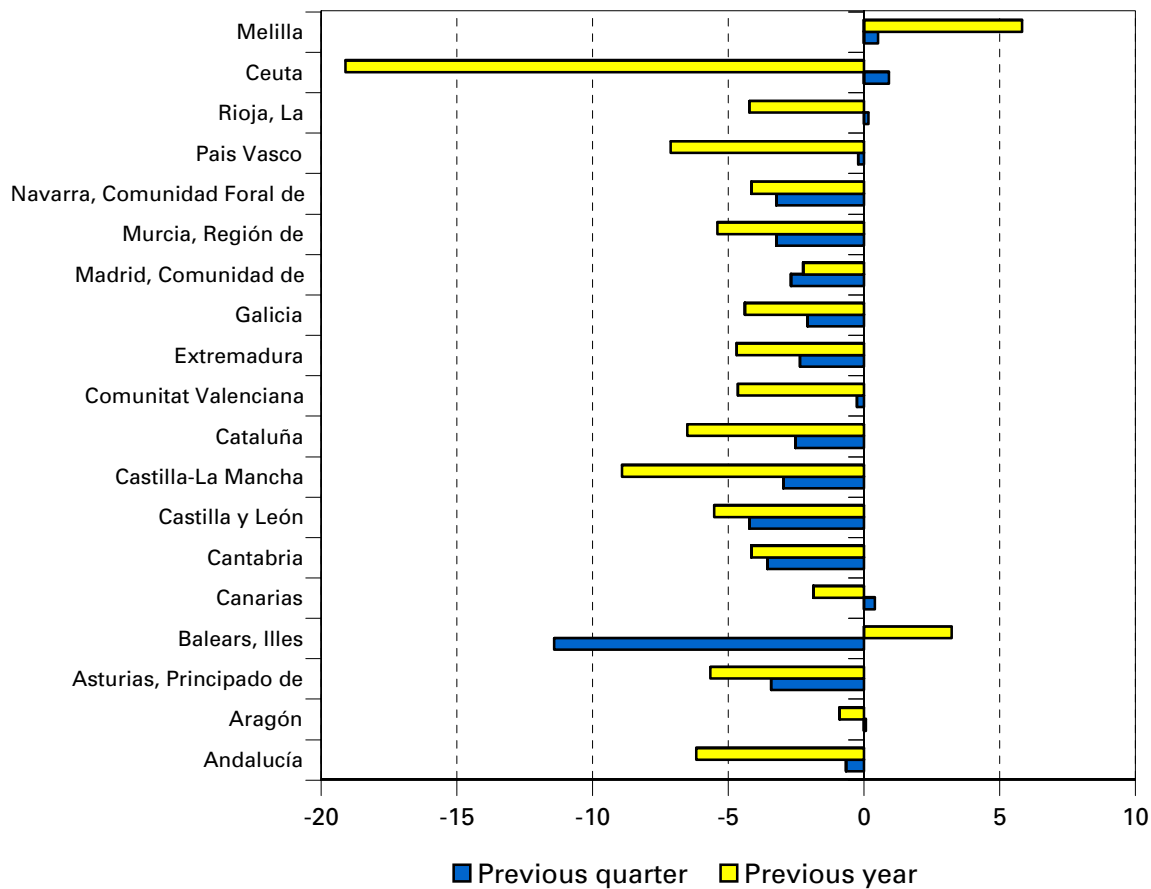


Unemployment



Employment variation percentages over the previous quarter and over the same quarter of the previous year

Fourth Quarter 2012



Unemployment rate (Spain = 26,02)

