

29 January 2019

**Economically Active Population Survey (EAPS)
Fourth Quarter 2019**

Main results

- Employment registered an increase of 36,600 persons in the fourth quarter of 2018 compared with the previous quarter (0.19%), standing at 19,564,600 employed persons. In seasonally adjusted terms, the quarterly variation was 0.91%. Employment has grown by 566,200 persons (2.98%) in the last 12 months.
- Employment increased this quarter by 43,400 people in the public sector and decreased by 6,900 in the private sector. In the last twelve months, employment has increased by 430,000 persons in the private sector and 136,200 in the public sector.
- Salaried employees increased this quarter by 20,000. The number of wage-earners with a permanent contract has increased by 108,500 persons, while that of wage-earners with temporary contracts has decreased by 88,500 persons. The number of salaried employees increased by 531,000 in the annual rate (permanent employment increased by 363,700 persons and temporary employment by 167,300). The number of self-employed workers increased by 18,100 this quarter and by 34,700 in the last 12 months.
- This quarter, employment increased in *Agriculture* (57,200 more) and *Construction* (39,800) and decreased in *Services* (-43,000) and *Industry* (-17,400). In the last year in *Services* there were 428,100 more employed persons, 136,300 in *Construction* and 4,900 in *Agriculture*. In turn, in *Industry* there were 3,000 fewer employed persons.
- The greatest increases in employment this quarter were in Andalucía (57,500 more), Comunidad de Madrid (43,900) and Castilla - La Mancha (12,400). The greatest decreases were recorded in Illes Balears (-65,600), Galicia (-8,400) and Extremadura (-7,400). In the last year, employment increased in all communities. Andalucía (118,600 more), Comunidad de Madrid (108,600) and Cataluña (75,000) presented the greatest increases.
- The number of unemployed persons decreased by 21,700 this quarter (-0.65%), standing at 3,304,300. In seasonally adjusted terms, the quarterly variation was -3.61%. Over the last 12 months, unemployment has decreased by 462,400 persons (-12.28%).
- The unemployment rate stood at 14.45%, which is one tenth less than the previous quarter. Within the last year, this rate has decreased by 2.10 points.
- By Autonomous Community, the greatest quarterly drops in unemployment occurred in Andalucía (63,900 fewer unemployed persons), Comunitat Valenciana (-27,800) and Comunidad de Madrid (-6,300). The greatest increases were registered in Cataluña (47,700 more unemployed persons), Illes Balears (20,200) and Aragón (8,500). In annual terms, the greatest decreases in the number of unemployed persons occurred in Andalucía (126,200 fewer), Comunidad de Madrid (-70,400) and Comunitat Valenciana (-65,900).

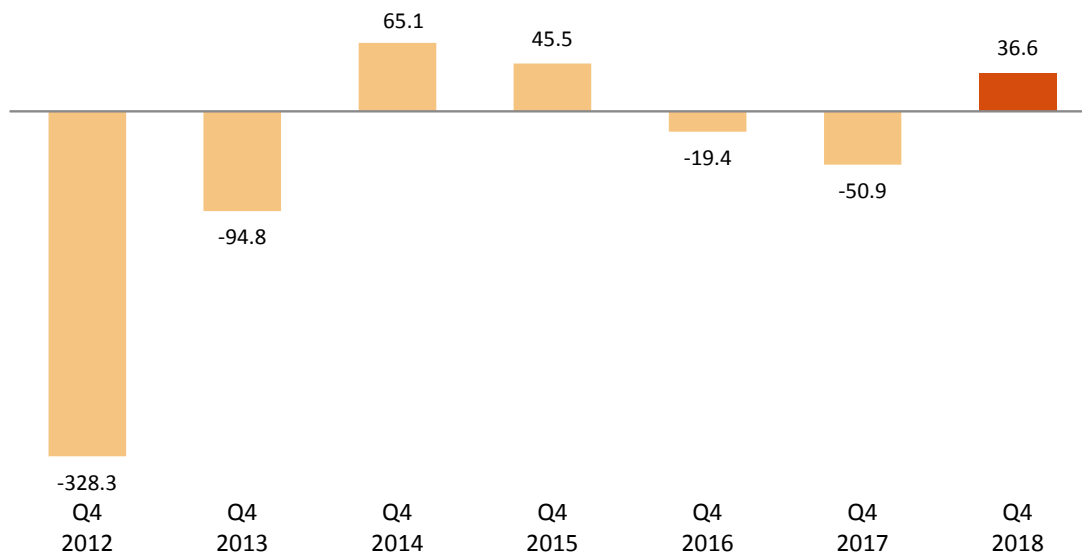
- This quarter, the number of economically active persons increased by 14,900, up to 22,868,800. The activity rate decreased by 12 hundredths standing at 58.61%. Over the last year, the economically active population has increased by 103,800 persons.

Employment

The number of employed persons increased by 36,600 persons in the fourth quarter of 2018, reaching 19,564,600. The quarterly employment variation rate stood at 0.19%.

The employment rate (percentage of employed persons in relation to the population aged 16 and over) stood at 50.14%, representing a decrease of four hundredths as compared to the previous quarter. In annual variation, this rate rose by 1.07 points.

Quarterly variation of employment. Thousands (Q4 compared with Q3 of the same year)

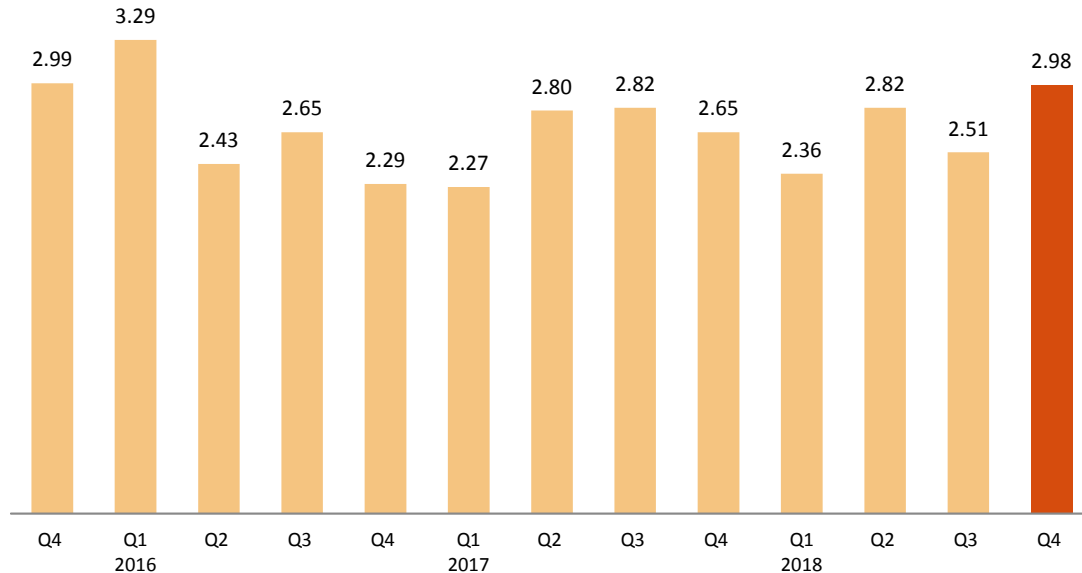


By sex, employment increased this quarter by 45,800 women and reduced by 9,300 men. By nationality, employment fell by 18,100 persons among Spaniards and grew by 54,700 persons among foreign nationals.

By age, employment increased this quarter in those aged 40 and over. The largest increase (43,200 more employed persons) occurred in the group aged 55 and over. By contrast, employment was low among those aged under 25 years old, with 47,300 fewer employed persons aged 20 to 24 and 29,400 fewer aged 16 to 19 years.

In the past 12 months, employment has increased by 566,200 persons (313,900 men and 252,300 women). The annual variation rate of employment was 2.98%, representing an increase of 47 hundredths compared to the previous quarter.

Annual variation rate of employment. Percentage



This quarter, employment increased in *Agriculture* (57,200 more employed persons) and *Construction* (39,800). On the contrary, it decreased in *Services* (-43,000) and *Industry* (-17,400).

In the last year employment has risen in *Services* (428,100 more employed persons), *Construction* (136,300) and in *Agriculture* (4,900). In turn, in *Industry* there were 3,000 fewer employed persons than there were a year ago.

Full-time employment decreased by 144,400 persons this quarter, whilst part-time employment increased by 181,000. The percentage of employed persons working part-time increased by nine tenths to 14.80%.

Over the last 12 months, full-time employment has increased by 476,800 persons and part-time employment by 89,400.

The number of salaried employees increased this quarter by 20,000. The number of wage-earners with a permanent contract has increased by 108,500 persons, while that of wage-earners with temporary contracts has decreased by 88,500 persons. The temporary employment rate decreased 57 hundredths, to 26.86%.

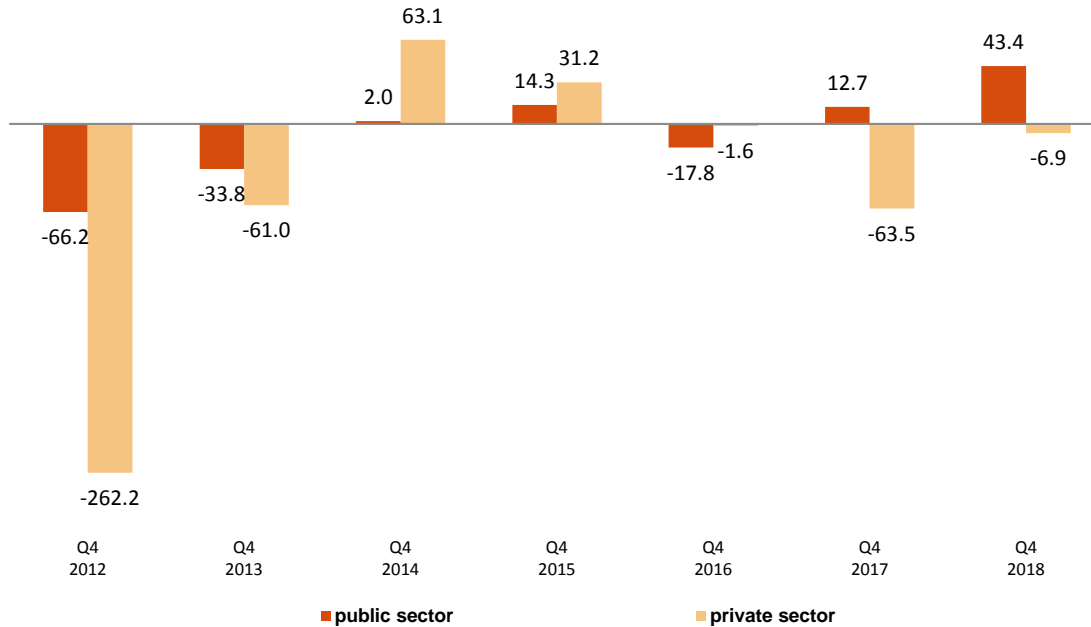
Over the last 12 months, the number of salaried employees has increased by 531,000. Permanent employment increased by 363,700 persons and temporary employment did so by 167,300.

The number of self-employed persons increased by 18,100 persons in quarterly variation, and by 34,700 over the past year.

This quarter, private employment¹ decreased by 6,900 persons, standing at 16,353,600. Public employment² increased by 43,400, up to 3,211,000.

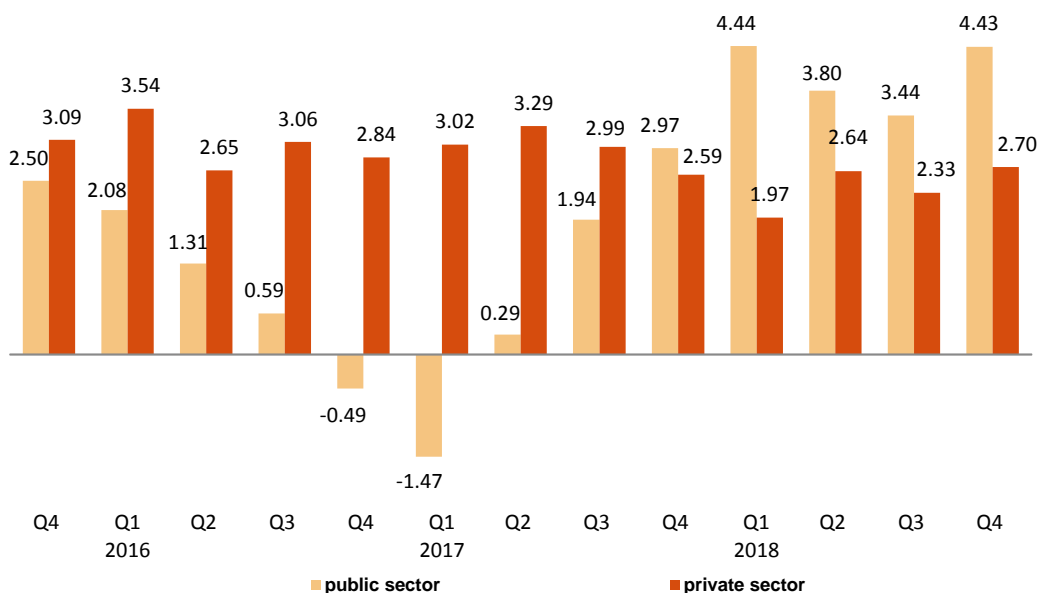
¹ Employment in the private sector includes: private sector salaried employees, employers, self-employed workers and self-employed without employees, members of cooperatives, contributing family workers and other professional situations.

Quarterly variation of employment by nature of employer. Thousands (Q4 compared with Q3 of the same year)



Employment in the private sector showed an annual variation of 2.70%, while public employment of 4.43%. In the past twelve months, employment has increased by 430,000 persons in the private sector and by 136,200 in the public sector.

Annual variation rate of employment by nature of employer. Percentage

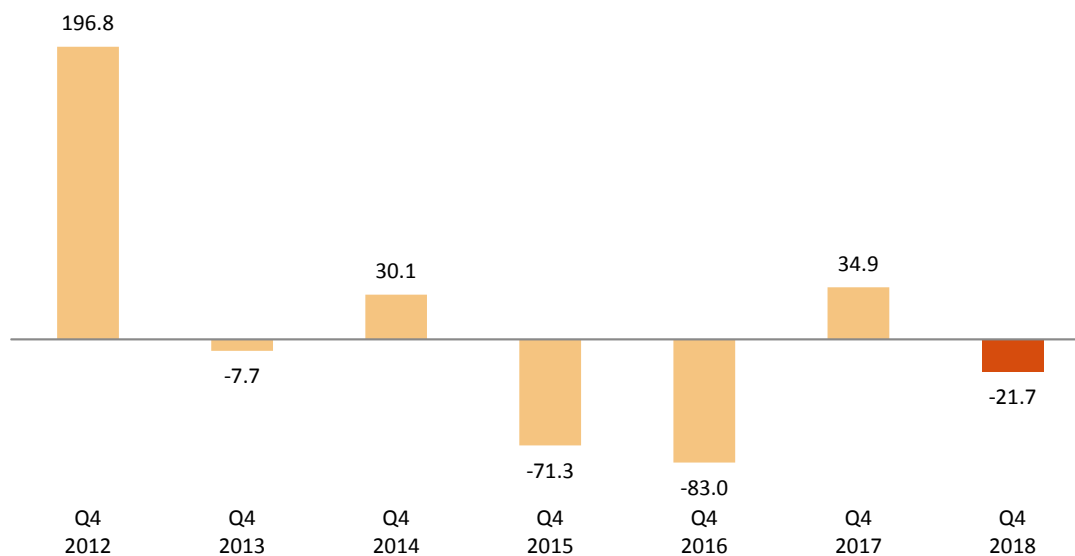


² Employment in the public sector includes all salaried employees of public companies and of the National and Regional Administrations, including both workers contributing to the General Social Security System and those attached to the Special Civil Service System.

Unemployment and unemployment rate

Unemployment decreased by 21,700 persons this quarter. The total number of unemployed persons stood at 3,304,300. In relative terms, the quarterly variation of unemployment was -0.65%.

Quarterly variation of employment. Thousands (Q4 compared with Q3 of the same year)



The unemployment rate decreased by one tenth and stood at 14.45%. In the last 12 months, this rate has decreased by 2.10 points.

By sex, the number of unemployed men decreased by 35,500 this quarter, standing at 1,574,100. Among women, unemployment increased by 13,800, reaching 1,730,200.

Female unemployment rate increased by four hundredths and stood at 16.26%. The male unemployment rate decreased by 24 hundredths and stood at 12.87%.

By age group, unemployment fell this quarter among those aged 16 to 19 (-17,600), those aged 20 to 24 (-8,200) and those aged 25 to 54 (-30,300). In turn, the number of unemployed persons increased by 34,400 among people aged 55 and over.

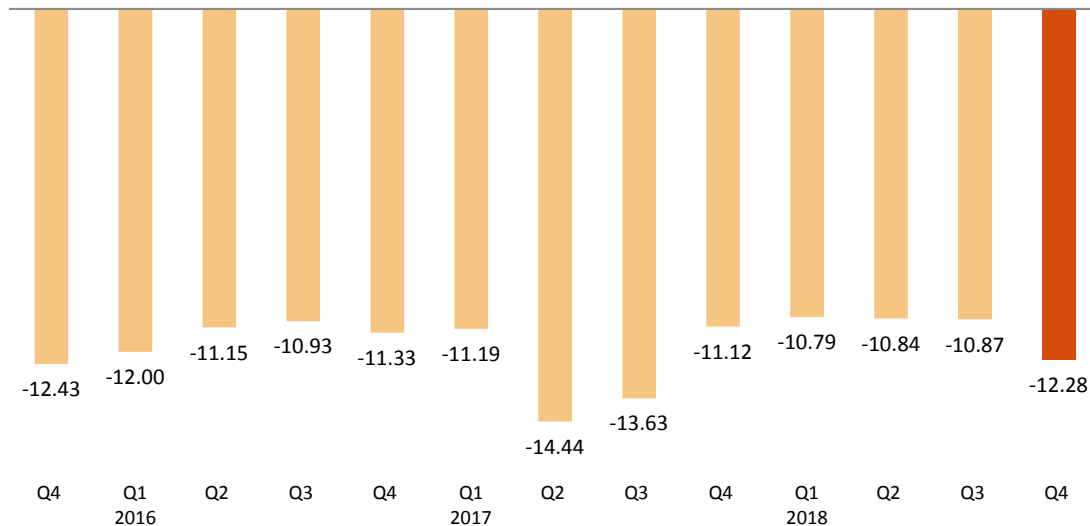
By nationality, unemployment decreased this quarter among Spaniards by 40,600 and increased among foreigners by 18,900. The unemployment rate of the Spanish population was 13.54%, while that of the foreign population was 20.77%.

This quarter, unemployment decreased in *Agriculture* (21,300 fewer unemployed persons) and *Construction* (-3,300). In turn, it increased in *Services* by 84,200 and in *Industry* by 9,700.

Unemployment decreased by 51,800 persons among those who lost their job over a year ago and by 39,200 among those who are seeking their first job.

The evolution of unemployment in the annual rate was -12.28%. The total number of unemployed persons has decreased by 462,400 persons in one year, with a decrease of 246,500 for men and 215,900 for women.

Annual variation rate of unemployment. Percentage



By age, the annual decrease of unemployment took place in all groups. The largest decrease was in the 25-54 age group (371,900 fewer unemployed persons).

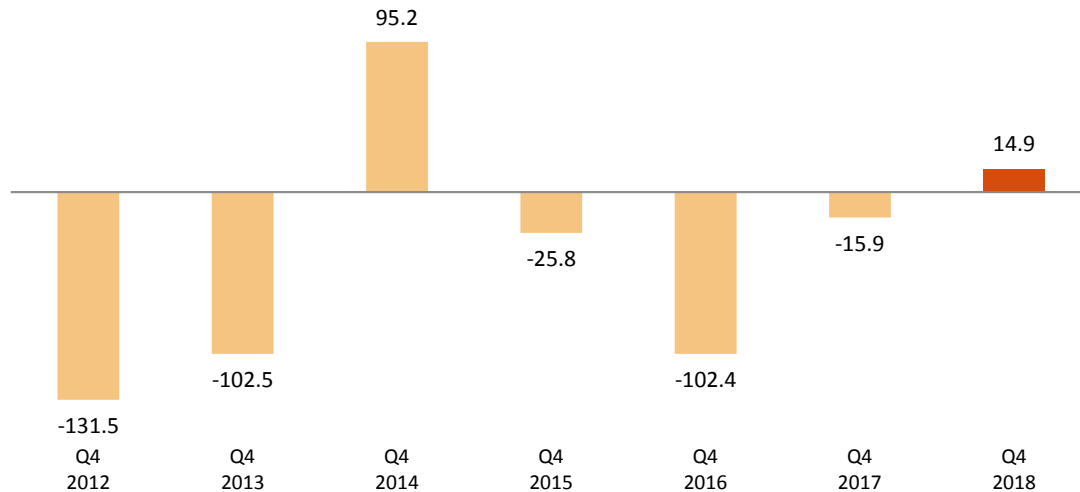
By sector, over the last year, unemployment has fallen in *Services* (64,100 fewer unemployed persons), *Agriculture* (-25,900), *Construction* (-19,200) and *Industry* (-2,900) On the other hand, the number of unemployed persons who lost their jobs over a year ago has decreased by 281,100 and that of unemployed persons looking for their first job by 69,300.

Economically active population and activity rate

The economically active population increased by 14,900 in the fourth quarter, standing at 22,868,800. The number of economically active women increased by 59,600, while that of men decreased by 44,800.

By nationality, the number of economically active persons decreased by 58,800 among Spaniards and increased by 73,600 among foreign nationals in this quarter.

Quarterly variation of activity. Thousands (Q4 compared with Q3 of the same year)



The activity rate decreased 12 hundredths this quarter to 58.61%. For men, the rate dropped by 41 hundredths standing at 64.45%. In turn, the female rate increased 15 hundredths, to 53.08%.

The activity rate of Spaniards decreased 22 hundredths as compared with the previous quarter, standing at 57.12%. Foreign national activity increased by 53 hundredths, up to 71.55%. The difference of more than 14 points between both activity rates is mainly explained by the different age structures for both populations.

In annual terms, the economically active population has increased by 103,800 persons. The annual variation rate of economically active persons was 0.46%.

Annual variation rate of activity. Percentage



Households

The number of households increased by 35,500 this quarter, standing at 18,625,000. Of these, 4,770,700 were single-person households.

Households in which all economically active members were unemployed decreased by 30,300 this quarter, reaching a total of 1,053,400. Of these, 284,200 were single-person households.

On the other hand, the number of households in which all of the economically active members were employed increased by 19,400, standing at 10,570,400. Of these, 1,899,500 were single-person households.

In annual comparison, the number of households with at least one economically active member in which those members were unemployed has decreased by 157,100, while those where all active members were employed has increased by 355,400.

Results by Autonomous Communities³

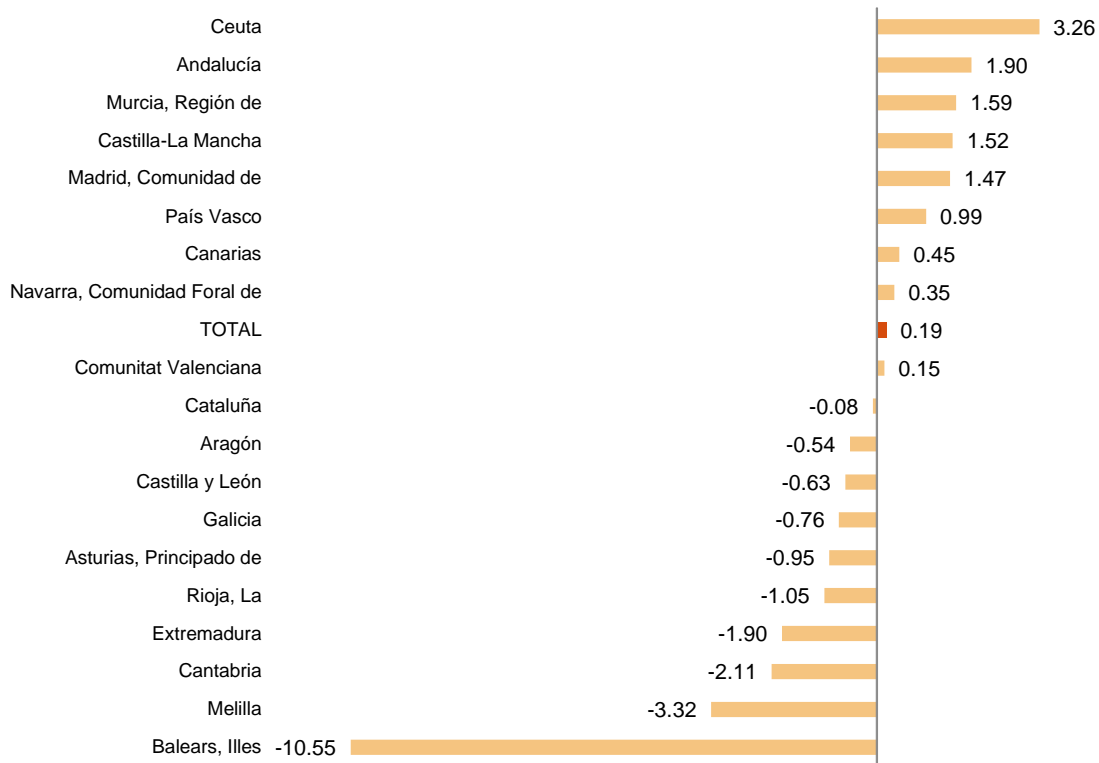
The greatest increases in employment this quarter were in Andalucía (57,500 more), Comunidad de Madrid (43,900) and Castilla - La Mancha (12,400).

In turn, the greatest decreases were recorded in Illes Balears (-65,600 persons), Galicia (-8,400) and Extremadura (-7,400).

³ As with the rest of the EAPS data, employment results in this section are presented according to the Autonomous Community of residence of those persons interviewed in the survey, and not according to where their workplace is.

In relative terms, the Autonomous Communities with the highest quarterly employment increase were Andalucía (1.90%), Murcia (1.59%) and Castilla-La Mancha (1.52%).

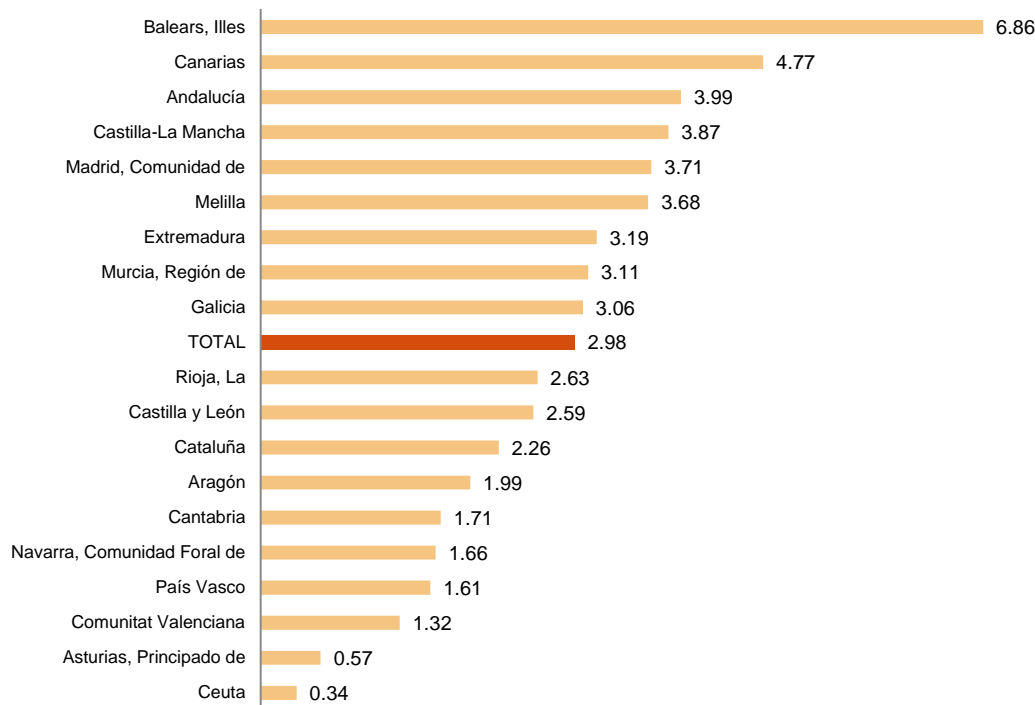
Quarterly variation rate of employment by Autonomous Community. Percentage



In the last 12 months employment has increased in all regions. The greatest increases in employment were observed in Andalucía (118,600 more), Comunidad de Madrid (108,600) and Cataluña (75,000).

In relative terms, the Autonomous Communities with the greatest annual increases in employment were Illes Balears (6.86%), Canarias (4.77%) and Andalucía (3.99%).

Annual variation rate of employment by Autonomous Community. Percentage



The greatest quarterly drops in unemployment occurred in Andalucía (63,900 fewer unemployed persons), Valencia (-27,800) and Comunidad de Madrid (-6,300).

In annual terms, the greatest decreases in the number of unemployed persons occurred in Andalucía (-126,200), Comunidad de Madrid (-70,400) and Valencia (-65,900).

País Vasco (9.58%), Cantabria (9.68%) and Comunidad Foral de Navarra (9.99%) recorded the lowest unemployment rates this quarter. At the other extreme, Extremadura (23.10%), Andalucía (21.26%) and Canarias (19.99%) showed the highest rates.

This quarter, the greatest increases in economic activity were registered in Cataluña (44,900 more economically active persons), Comunidad de Madrid (37,600) and País Vasco (11,900). The greatest decreases were recorded in Illes Balears (45,400 fewer active persons), Comunitat Valenciana (-24,700) and Galicia (-12,400).

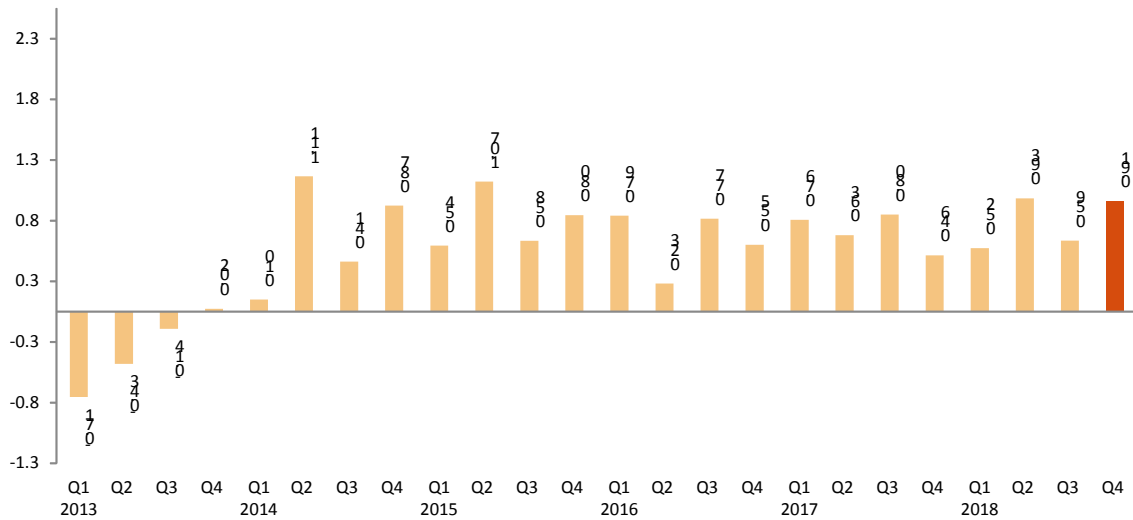
In the last 12 months, Cataluña (47,100 more economically active people), Comunidad de Madrid (38,200) and Illes Balears (28,700) registered the greatest increases in the number of economically active persons. In contrast, the greatest decreases were observed in Comunitat Valenciana (-39,100), Andalucía (-7,600) and Cantabria (-7,100).

This quarter, the activity rates fluctuated between 62.94% for Comunidad de Madrid and 50.27% for Principado de Asturias.

Seasonally adjusted series

In the fourth quarter of 2018, the quarterly rate of employment in seasonally adjusted terms was 0.91%.

Quarterly variation rate of seasonally adjusted employment. Percentage



As regards seasonally-adjusted unemployment results, there was a decrease of 3.61%.

Quarterly variation rate of seasonally adjusted unemployment. Percentage



The series adjusted for seasonal and calendar effects are obtained with the JDemetra+ software (version 2.2.0), as from the publication of data referring to 2018. The change of software from TRAMO/SEATS to JDemetra+ does not affect the seasonal adjustment methodology in the INE series, as the TRAMO/SEATS seasonal adjustment method is still used.

As explained in the methodology used for seasonal adjustment, the seasonal adjustment model is maintained for a year, with the first quarters corresponding to the time of the model's re-identification, but the coefficients are recalculated quarterly, so that each quarter the previous results are reviewed (either by re-identification or by revision of coefficients) and therefore the latest series available must always be consulted. The series of the quarterly variation rates of the seasonally adjusted results of employment and unemployment since 2005 and the description of the method used can be found in:

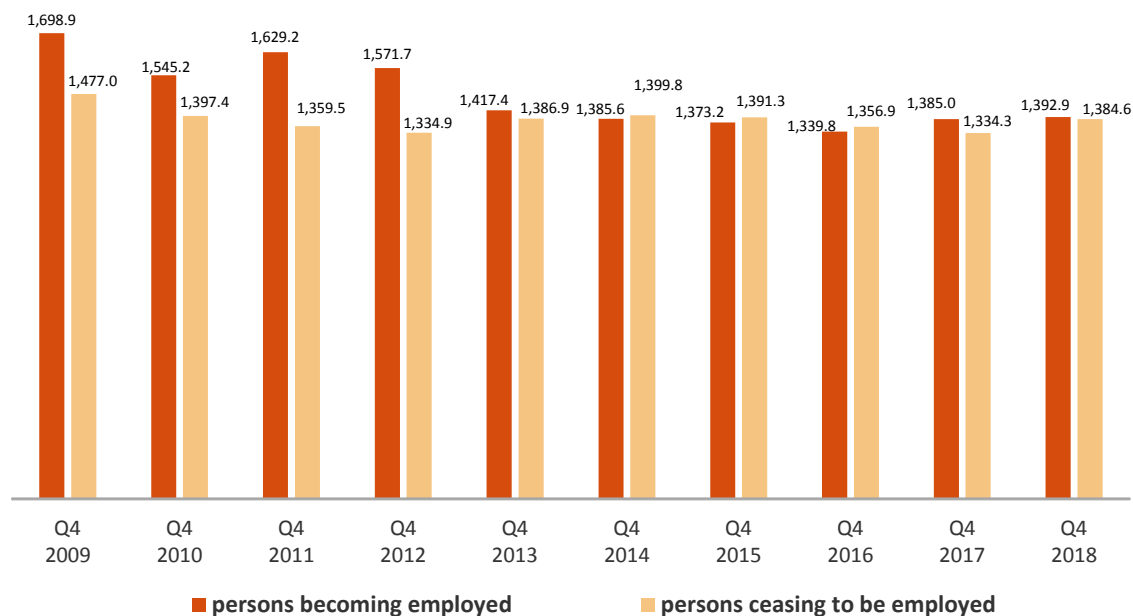
http://www.ine.es/daco/daco42/daco4211/epa_desestacional.xlsx

Flows in absolute values as compared with the previous quarter⁴

The total inflow to employment in the fourth quarter of 2018 was 1,384,600 people, a figure 50,300 higher than that registered in the same quarter of the previous year.

However, the outflow from employment was 1,392,900 people, which is 7,900 more than in the same quarter of 2017.

Flows of persons becoming and ceasing to be employed each quarter. Thousands

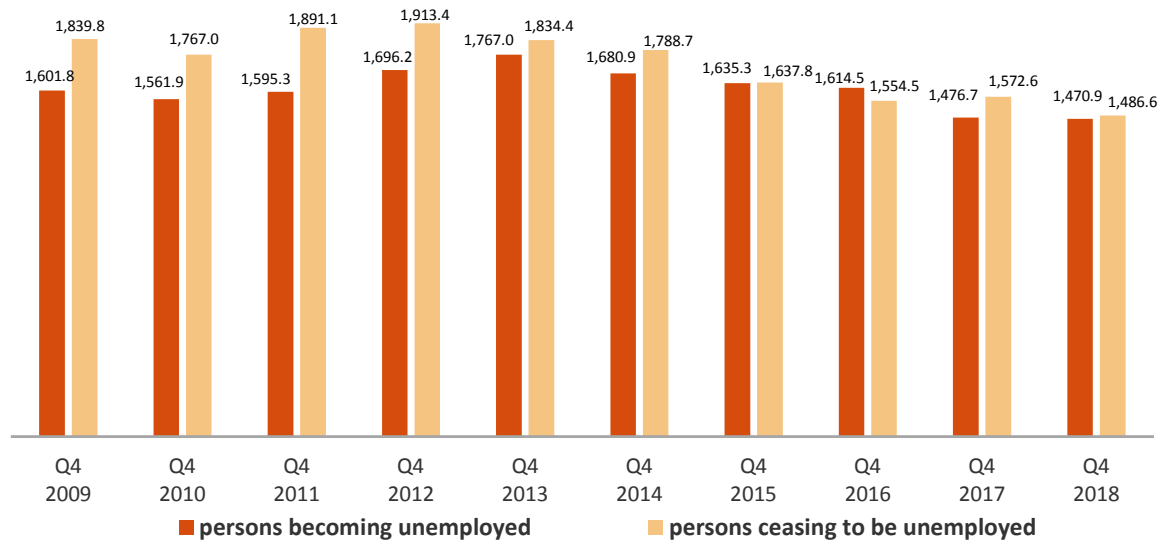


The number of persons who were unemployed three months ago but are not currently unemployed stood at 1,470,900, which is 5,800 fewer persons than in the same period in 2017.

In turn, the total inflow to unemployment reached 1,486,600 people, which is 86,000 fewer persons than in the same quarter of 2017.

⁴ This section compiles the results of the Economically Active Population Flow Statistics. Due to the methodology used when preparing it, the results might not match the net balances of quarterly EAPS. The differences are caused by the "no data recorded" groups (persons turning 16 years old in the change between one quarter and the next and those who did not live in Spain in the previous quarter).

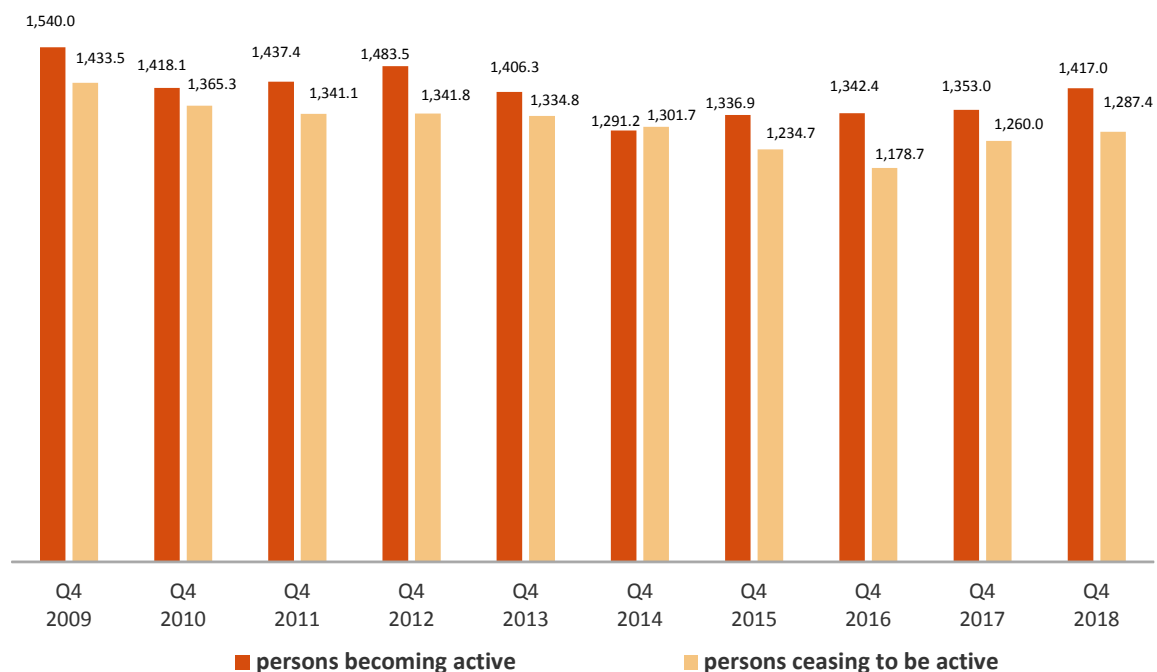
Flows of persons becoming and ceasing to be unemployed each quarter. Thousands



The inflow into activity in this fourth quarter was 1,287,400, a figure 27,300 higher than that of the same period in 2017.

Meanwhile, a total of 1,417,000 people have left the activity this quarter, compared to 1,353,000 who did so during the same quarter in the previous year (that is, 64,000 more).

Flows of persons becoming and ceasing to be active each quarter. Thousands



The outflow from employment to inactivity of people aged 60 and over was 107,800 this quarter. This figure is 12,700 higher than the one observed in the same period of 2017.

The number of people under 25 who have been entering employment directly from inactivity this quarter stood at 130,900, a figure 18,000 higher than that observed in the fourth quarter of 2017.

The flow data on which these comments are based can be found in the annex of this press release <http://www.ine.es/daco/daco42/daco4211/epafluj0418.xls>

EAPS results by province

The provincial results summary of the EAPS may be accessed via the following link:

<http://www.ine.es/daco/daco42/daco4211/epapro0418.pdf>

All the provincial information can also be accessed from the INEbase database:

<http://www.ine.es/dynt3/inebase/index.html?padre=996>

Review and update of data

The data published today are final. All results are available on INEBase.

Methodological note

The Economically Active Population Survey (EAPS) has been carried out since 1964 and the methodology currently in force is that of 2005.

It is a continuous, quarterly research addressed to families, whose main purpose is to obtain data on the labour force and its various categories (employed, unemployed), as well as on the population outside the labour market (inactive).

As of the third quarter of 2009, the survey includes an additional sample in Galicia that is collected by the Galician Statistics Institute (IGE) using the same fieldwork system and methodology as the INE.

Type of survey: quarterly continuous survey.

Population scope: population residing in family dwellings.

Geographical scope: the entire national territory.

Reference period of the results: the quarter.

Reference period of the information: the week before the interview.

Sample size: 3,822 census tracts, around 65,000 dwellings and 160,000 people. Of the 3,822 tracts, 234 correspond to the additional sample of Galicia.

Type of sampling: two-stage sampling with stratification in the first stage units. The first stage units are the census tracts and the second stage units are the inhabited family dwellings.

Collection method: personal and telephone interview.

For more information you can access the methodology at:

https://www.ine.es/en/inebaseDYN/epa30308/docs/resumetepa_en.pdf

To the technical details of the survey design and evaluation of the quality of the data in:

http://www.ine.es/en/inebaseDYN/epa30308/docs/epa05_disenc_en.pdf

And the standardised methodological report at:

<https://www.ine.es/dynt3/metadatos/en/RespuestaDatos.html?oe=30308>

The Statistics on Economically Active Population Flows (EAPFS) collect information regarding the follow-up of the population, or specific groups thereof, between one quarter and the previous one in absolute values, regarding its relation with labour market. This information links the interviewee's situations in two moments of time on the basis of the EAPS in order to study its evolution.

Given that in the EAPS sample one sixth is renewed each quarter and the remaining 5/6 parts are kept fixed between two consecutive quarters, the common part of the sample between the two conducts of the survey is used to obtain flow statistics from the questions relating to the situation in which the interviewee was in the current and previous quarters.

Type of survey: quarterly exploitation of the common EAPS sample between consecutive quarters that provides estimates in absolute values of the relation with the activity in the current period compared with that of the previous quarter.

Population scope: population residing in family dwellings.

Geographical scope: the entire national territory.

Reference period of the results: the quarter.

Reference period of the information: the week before the interview.

Sample size: 3,822 census tracts. The common EPA sample between consecutive quarters is approximately 100,000 people aged 16 and older.

Type of sampling: two-stage sampling with stratification in the first stage units. The first stage units are the census tracts and the second stage units are the inhabited family dwellings.

Collection method: personal and telephone interview.

For more information you can access the methodology at:

https://www.ine.es/en/inebaseDYN/flujos30310/docs/metoflujos_valores_absolutos_en.pdf

And the standardised methodological report at:

<https://www.ine.es/dynt3/metadatos/en/RespuestaDatos.html?oe=30310>

For further information see **INEbase:** www.ine.es/en/ Twitter: [@es_ine](https://twitter.com/es_ine)

All press releases at: www.ine.es/en/prensa/prensa_en.htm

Press office: Telephone numbers: (+34) 91 583 93 63 /94 08 – gprensa@ine.es

Information Area: Telephone number: (+34) 91 583 91 00 – www.ine.es/infoine/?L=1

Economically Active Population Survey Fourth Quarter 2018

National results

(Continues)

	Current quarter	Variation on previous quarter		Variation on same quarter, previous year	
		Difference	Percentage	Difference	Percentage
1. Population aged 16 years and over by sex and labour status					
BOTH SEXES					
Population aged 16 years and over	39,019.5	107.1	0.28	302.9	0.78
Active population	22,868.8	14.9	0.07	103.8	0.46
- Employed persons	19,564.6	36.6	0.19	566.2	2.98
- Unemployed persons	3,304.3	-21.7	-0.65	-462.4	-12.28
Inactive population	16,150.6	92.2	0.57	199.1	1.25
Activity rate	58.61	-0.12	-	-0.19	-
Unemployment rate	14.45	-0.10	-	-2.10	-
Population aged 16 to 64 years	30,259.1	61.7	0.20	180.7	0.60
Activity rate (16-64)	74.89	-0.11	-	-0.18	-
Unemployment rate (16-64)	14.54	-0.11	-	-2.11	-
Employment rate (16-64)	64.00	-0.01	-	1.43	-
MALES					
Population aged 16 years and over	18,971.5	51.4	0.27	140.6	0.75
Active population	12,227.2	-44.8	-0.36	67.4	0.55
- Employed persons	10,653.1	-9.3	-0.09	313.9	3.04
- Unemployed persons	1,574.1	-35.5	-2.20	-246.5	-13.54
Inactive population	6,744.3	96.2	1.45	73.3	1.10
Activity rate	64.45	-0.41	-	-0.12	-
Unemployment rate	12.87	-0.24	-	-2.10	-
Population aged 16 to 64 years	15,128.0	29.5	0.20	81.6	0.54
Activity rate (16-64)	80.04	-0.44	-	-0.04	-
Unemployment rate (16-64)	12.96	-0.24	-	-2.11	-
Employment rate (16-64)	69.67	-0.19	-	1.65	-
FEMALES					
Population aged 16 years and over	20,047.9	55.7	0.28	162.2	0.82
Active population	10,641.6	59.6	0.56	36.4	0.34
- Employed persons	8,911.5	45.8	0.52	252.3	2.91
- Unemployed persons	1,730.2	13.8	0.80	-215.9	-11.09
Inactive population	9,406.3	-4.0	-0.04	125.8	1.36
Activity rate	53.08	0.15	-	-0.25	-
Unemployment rate	16.26	0.04	-	-2.09	-
Population aged 16 to 64 years	15,131.0	32.1	0.21	99.2	0.66
Activity rate (16-64)	69.73	0.22	-	-0.31	-
Unemployment rate (16-64)	16.35	0.03	-	-2.10	-
Employment rate (16-64)	58.33	0.16	-	1.21	-

2. Spanish population⁽¹⁾ aged 16 years and over by labour status

SPANISH POPULATION AGED 16 YEARS AND OVER	34,985.2	33.6	0.10	68.2	0.20
Active population	19,982.2	-58.8	-0.29	-1.8	-0.01
- Employed persons	17,277.5	-18.1	-0.10	404.8	2.40
- Unemployed persons	2,704.7	-40.6	-1.48	-406.6	-13.07
Inactive population	15,003.0	92.4	0.62	70.1	0.47
Activity rate	57.12	-0.22	-	-0.12	-
Unemployment rate	13.54	-0.16	-	-2.03	-

⁽¹⁾ including dual nationality

29 January 2019

National results

(Continuation)

	Current quarter	Variation on previous quarter		Variation on same quarter, previous year		
		Difference	Percentage	Difference	Percentage	
3. Foreign population aged 16 years and over by labour status						
FOREIGN POPULATION AGED 16 YEARS AND OVER	4,034.2	73.5	1.85	234.6	6.18	
Active population	2,886.6	73.6	2.62	105.6	3.80	
- Employed persons	2,287.0	54.7	2.45	161.4	7.59	
- Unemployed persons	599.6	18.9	3.26	-55.7	-8.50	
Inactive population	1,147.6	-0.2	-0.02	129.0	12.66	
Activity rate	71.55	0.53	-	-1.64	-	
Unemployment rate	20.77	0.13	-	-2.79	-	
4. Employed persons by sex, age group and economic sector						
BOTH SEXES	19,564.6	36.6	0.19	566.2	2.98	
16 to 19 years	136.1	-29.4	-17.76	17.6	14.86	
20 to 24 years	860.7	-47.3	-5.21	47.5	5.84	
25 to 29 years	1,695.3	0.3	0.02	49.8	3.02	
30 to 34 years	2,118.4	-2.2	-0.10	6.1	0.29	
35 to 39 years	2,706.6	-0.4	-0.01	-67.7	-2.44	
40 to 44 years	3,155.1	12.2	0.39	78.5	2.55	
45 to 49 years	2,898.9	36.3	1.27	124.6	4.49	
50 to 54 years	2,596.3	23.9	0.93	88.0	3.51	
55 and over	3,397.1	43.2	1.29	221.9	6.99	
MALES	10,653.1	-9.3	-0.09	313.9	3.04	
16 to 19 years	76.6	-17.2	-18.32	8.2	12.00	
20 to 24 years	459.2	-24.8	-5.12	36.5	8.63	
25 to 29 years	894.4	1.0	0.11	40.8	4.79	
30 to 34 years	1,119.8	-8.5	-0.76	-0.4	-0.04	
35 to 39 years	1,449.1	-17.2	-1.17	-52.8	-3.51	
40 to 44 years	1,719.0	10.5	0.61	34.1	2.02	
45 to 49 years	1,595.9	16.7	1.06	76.1	5.01	
50 to 54 years	1,435.1	14.0	0.99	45.0	3.23	
55 and over	1,904.0	16.2	0.86	126.3	7.11	
FEMALES	8,911.5	45.8	0.52	252.3	2.91	
16 to 19 years	59.4	-12.2	-17.04	9.4	18.77	
20 to 24 years	401.5	-22.5	-5.31	11.0	2.82	
25 to 29 years	800.9	-0.6	-0.08	8.9	1.13	
30 to 34 years	998.7	6.4	0.64	6.5	0.65	
35 to 39 years	1,257.6	16.8	1.35	-14.9	-1.17	
40 to 44 years	1,436.1	1.7	0.12	44.4	3.19	
45 to 49 years	1,303.0	19.5	1.52	48.4	3.86	
50 to 54 years	1,161.2	9.9	0.86	43.0	3.85	
55 and over	1,493.1	26.9	1.84	95.6	6.84	
TOTAL EMPLOYED PERSONS	19,564.6	36.6	0.19	566.2	2.98	
Agriculture	825.6	57.2	7.44	4.9	0.59	
Industry	2,708.3	-17.4	-0.64	-3.0	-0.11	
Construction	1,279.9	39.8	3.21	136.3	11.92	
Services	14,750.8	-43.0	-0.29	428.1	2.99	

National results

(Continuation)

	Current quarter	Variation on previous quarter		Variation on same quarter, previous year	
		Difference	Percentage	Difference	Percentage
5. Employed persons by professional status, type of contract, public / private sectors and working hours					
TOTAL EMPLOYED PERSONS	19,564.6	36.6	0.19	566.2	2.98
BY PROFESSIONAL STATUS					
Self-employed persons	3,104.5	18.1	0.59	34.7	1.13
- Employers	959.1	-22.3	-2.27	-9.2	-0.95
- Independent workers	2,063.7	62.7	3.13	65.0	3.25
- Cooperative members	20.6	-6.8	-24.96	-1.6	-7.41
- Family workers	61.2	-15.5	-20.20	-19.5	-24.15
Employees	16,453.6	20.0	0.12	531.0	3.34
- With a permanent job	12,034.1	108.5	0.91	363.7	3.12
- With a temporary job	4,419.5	-88.5	-1.96	167.3	3.93
Others	6.4	-1.5	-18.83	0.5	7.92
BY PUBLIC / PRIVATE SECTORS					
Public sector employed persons	3,211.0	43.4	1.37	136.2	4.43
Private sector employed persons	16,353.6	-6.9	-0.04	430.0	2.70
BY WORKING HOURS					
Full-time employed persons	16,669.8	-144.4	-0.86	476.8	2.94
Males	9,917.6	-46.2	-0.46	311.7	3.25
Females	6,752.2	-98.2	-1.43	165.1	2.51
Part-time employed persons	2,894.8	181.0	6.67	89.4	3.19
Males	735.5	36.9	5.28	2.1	0.29
Females	2,159.3	144.1	7.15	87.2	4.21

(*) Private employment includes all persons in employment other than public employees. Namely: private employees, employers, independent workers, cooperative members, family workers and other professional status.

6. Unemployed persons by sex, age group, and economic sector

BOTH SEXES	3,304.3	-21.7	-0.65	-462.4	-12.28
16 to 19 years	120.1	-17.6	-12.79	-20.0	-14.30
20 to 24 years	382.8	-8.2	-2.09	-35.2	-8.42
25 to 54 years	2,303.9	-30.3	-1.30	-371.9	-13.90
55 and over	497.5	34.4	7.44	-35.3	-6.62
MALES	1,574.1	-35.5	-2.20	-246.5	-13.54
16 to 19 years	67.7	-10.3	-13.22	-12.0	-15.05
20 to 24 years	204.2	-15.8	-7.16	-15.0	-6.85
25 to 54 years	1,054.5	-22.4	-2.08	-179.8	-14.56
55 and over	247.8	13.0	5.53	-39.8	-13.83
FEMALES	1,730.2	13.8	0.80	-215.9	-11.09
16 to 19 years	52.5	-7.3	-12.24	-8.1	-13.31
20 to 24 years	178.6	7.6	4.43	-20.2	-10.15
25 to 54 years	1,249.4	-7.9	-0.63	-192.1	-13.33
55 and over	249.7	21.4	9.40	4.5	1.84
TOTAL UNEMPLOYED PERSONS	3,304.3	-21.7	-0.65	-462.4	-12.28
Agriculture	173.1	-21.3	-10.94	-25.9	-13.00
Industry	171.3	9.7	6.02	-2.9	-1.64
Construction	129.1	-3.3	-2.51	-19.2	-12.96
Services	1,169.6	84.2	7.76	-64.1	-5.20
Lost their job more than 1 year ago	1,331.2	-51.8	-3.75	-281.1	-17.43
First job seekers	330.0	-39.2	-10.63	-69.3	-17.35

National results

(Conclusion)

	Current quarter	Variation on previous quarter		Variation on same quarter, previous year	
		Difference	Percentage	Difference	Percentage

7. Unemployment rate by relationship with the reference person

	Current quarter	Variation on previous quarter	Percentage	Variation on same quarter, previous year	Percentage
TOTAL	14.45	-0.10	-	-2.10	-
Reference person	11.63	0.02	-	-1.70	-
Spouse or partner	11.82	-0.03	-	-2.04	-
Child	26.09	-0.43	-	-3.36	-
Other relatives	21.65	0.51	-	-2.64	-
Unrelated persons	14.22	1.81	-	-0.40	-

8. Household data

	Current quarter	Variation on previous quarter	Percentage	Variation on same quarter, previous year	Percentage
TOTAL HOUSEHOLDS	18,625.0	35.5	0.19	95.3	0.51
Households with at least one active member	13,394.1	27.9	0.21	35.7	0.27
- All members employed	10,570.4	19.4	0.18	355.4	3.48
- All members unemployed	1,053.4	-30.3	-2.79	-157.1	-12.98
Households without any active population	5,230.8	7.6	0.15	59.6	1.15

Mobility according to activity in current and previous quarter

Classification in previous quarter	Classification in current quarter			
	Total	Employed	Unemployed persons	Inactive
BOTH SEXES				
Total	39,019.5	19,564.6	3,304.3	16,150.6
Employed persons	19,572.8	18,180.0	736.1	656.8
Unemployed persons	3,288.7	840.2	1,817.7	630.8
Inactive	16,021.0	539.6	747.8	14,733.6
Not classifiable	137.0	4.8	2.7	129.5
MALES				
Total	18,971.5	10,638.6	1,572.7	6,760.2
Employed persons	10,695.8	10,008.7	389.8	297.3
Unemployed persons	1,571.2	429.2	887.0	254.9
Inactive	6,634.9	197.0	293.5	6,144.4
Not classifiable	69.6	3.7	2.3	63.6
FEMALES				
Total	20,047.9	8,925.9	1,731.6	9,390.4
Employed persons	8,877.0	8,171.2	346.3	359.5
Unemployed persons	1,717.5	410.9	930.7	375.9
Inactive	9,386.1	342.7	454.2	8,589.2
Not classifiable	67.4	1.1	0.4	65.9

Weighting factors of current quarter (backward analysis)

Results by autonomous community and autonomous city

(Continues)

	Current quarter	Variation on previous quarter		Variation on same quarter, previous year	
		Difference	Percentage	Difference	Percentage
1. Population aged 16 years and over					
TOTAL	39,019.5	107.1	0.28	302.9	0.78
Andalucía	6,934.1	14.1	0.20	27.8	0.40
Aragón	1,098.0	3.2	0.30	6.0	0.55
Asturias, Principado de	891.6	-0.8	-0.09	-6.3	-0.70
Balears, Illes	992.7	6.9	0.70	25.9	2.67
Canarias	1,872.5	10.3	0.55	36.9	2.01
Cantabria	492.7	0.5	0.11	1.0	0.21
Castilla y León	2,047.9	-0.2	-0.01	-9.4	-0.46
Castilla-La Mancha	1,676.3	2.7	0.16	3.2	0.19
Cataluña	6,230.9	22.7	0.37	81.7	1.33
Comunitat Valenciana	4,144.4	11.4	0.27	19.9	0.48
Extremadura	896.2	-0.3	-0.03	-4.1	-0.46
Galicia	2,334.3	0.9	0.04	-2.0	-0.08
Madrid, Comunidad de	5,452.1	23.8	0.44	93.1	1.74
Murcia, Región de	1,205.9	5.4	0.45	12.4	1.04
Navarra, Comunidad Foral de	533.4	2.1	0.39	6.6	1.25
País Vasco	1,826.7	3.5	0.19	8.2	0.45
Rioja, La	261.0	0.5	0.18	1.5	0.58
Ceuta	65.8	0.2	0.25	0.3	0.41
Melilla	62.8	0.2	0.26	0.3	0.48

2. Active population

TOTAL	22,868.8	14.9	0.07	103.8	0.46
Andalucía	3,924.6	-6.3	-0.16	-7.6	-0.19
Aragón	649.0	5.4	0.84	10.7	1.68
Asturias, Principado de	448.3	-7.4	-1.63	-6.7	-1.48
Balears, Illes	624.2	-45.4	-6.79	28.7	4.82
Canarias	1,141.6	10.0	0.89	23.3	2.09
Cantabria	267.5	-3.7	-1.36	-7.1	-2.58
Castilla y León	1,115.9	-8.1	-0.72	-3.3	-0.30
Castilla-La Mancha	990.0	8.4	0.86	-5.6	-0.56
Cataluña	3,842.5	44.9	1.18	47.1	1.24
Comunitat Valenciana	2,406.7	-24.7	-1.02	-39.1	-1.60
Extremadura	495.5	-0.4	-0.09	2.4	0.48
Galicia	1,237.0	-12.4	-1.00	-0.9	-0.07
Madrid, Comunidad de	3,431.8	37.6	1.11	38.2	1.13
Murcia, Región de	718.3	7.0	0.98	10.0	1.42
Navarra, Comunidad Foral de	316.5	2.3	0.74	6.4	2.07
País Vasco	1,029.3	11.9	1.17	5.1	0.50
Rioja, La	154.8	-0.4	-0.27	1.9	1.25
Ceuta	36.5	-2.3	-5.95	-0.9	-2.32
Melilla	39.0	-1.4	-3.53	1.0	2.64

* Data below 5000 are subject to strong variations, due to sampling error

(:) The variation percentages calculated from low figures with high sampling errors are not significant

Results by autonomous community and autonomous city

(Conclusion)

	Current quarter	Variation on previous quarter		Variation on same quarter, previous year	
		Difference	Percentage	Difference	Percentage
3. Employed persons					
TOTAL	19,564.6	36.6	0.19	566.2	2.98
Andalucía	3,090.3	57.5	1.90	118.6	3.99
Aragón	577.0	-3.1	-0.54	11.2	1.99
Asturias, Principado de	390.6	-3.8	-0.95	2.2	0.57
Balears, Illes	556.1	-65.6	-10.55	35.7	6.86
Canarias	913.4	4.1	0.45	41.6	4.77
Cantabria	241.6	-5.2	-2.11	4.1	1.71
Castilla y León	990.8	-6.2	-0.63	25.0	2.59
Castilla-La Mancha	830.1	12.4	1.52	30.9	3.87
Cataluña	3,391.1	-2.8	-0.08	75.0	2.26
Comunitat Valenciana	2,062.7	3.1	0.15	26.8	1.32
Extremadura	381.1	-7.4	-1.90	11.8	3.19
Galicia	1,088.1	-8.4	-0.76	32.3	3.06
Madrid, Comunidad de	3,035.6	43.9	1.47	108.6	3.71
Murcia, Región de	604.6	9.5	1.59	18.2	3.11
Navarra, Comunidad Foral de	284.8	1.0	0.35	4.6	1.66
País Vasco	930.6	9.1	0.99	14.8	1.61
Rioja, La	138.8	-1.5	-1.05	3.6	2.63
Ceuta	27.7	0.9	3.26	0.1	0.34
Melilla	29.7	-1.0	-3.32	1.1	3.68

4. Unemployed persons

TOTAL	3,304.3	-21.7	-0.65	-462.4	-12.28
Andalucía	834.3	-63.9	-7.11	-126.2	-13.14
Aragón	72.1	8.5	13.43	-0.5	-0.69
Asturias, Principado de	57.6	-3.7	-5.96	-9.0	-13.47
Balears, Illes	68.1	20.2	42.05	-7.0	-9.29
Canarias	228.2	5.9	2.68	-18.2	-7.40
Cantabria	25.9	1.5	6.20	-11.1	-30.07
Castilla y León	125.1	-1.9	-1.49	-28.3	-18.46
Castilla-La Mancha	160.0	-4.0	-2.46	-36.5	-18.59
Cataluña	451.4	47.7	11.81	-27.9	-5.82
Comunitat Valenciana	344.1	-27.8	-7.48	-65.9	-16.08
Extremadura	114.4	6.9	6.47	-9.4	-7.60
Galicia	148.9	-4.1	-2.65	-33.2	-18.22
Madrid, Comunidad de	396.2	-6.3	-1.56	-70.4	-15.08
Murcia, Región de	113.7	-2.5	-2.15	-8.2	-6.73
Navarra, Comunidad Foral de	31.6	1.3	4.37	1.8	5.90
País Vasco	98.7	2.8	2.93	-9.6	-8.91
Rioja, La	15.9	1.1	7.06	-1.6	-9.35
Ceuta	8.8	-3.2	-26.64	-1.0	-9.88
Melilla	9.3	-0.4	-4.18	-0.1	-0.57

* Data below 5,000 are subject to strong variations, due to sampling error

(-) The variation percentages calculated from low figures with high sampling errors are not significant

Results by autonomous community and autonomous city

(Absolute figures in thousands and rates in percentage)

5. Employed and unemployed persons by sex. Activity and unemployment rates

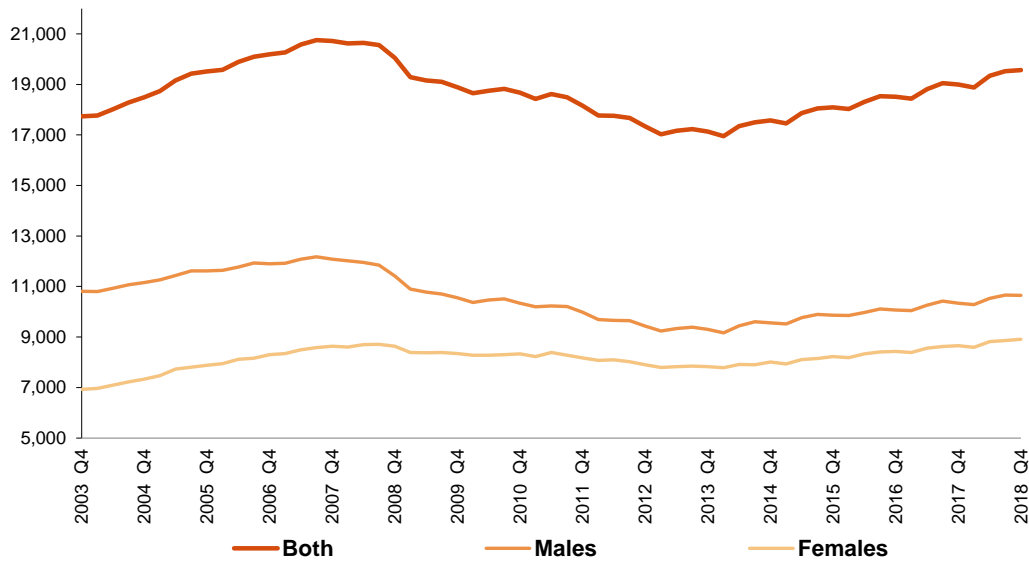
	Both sexes				Males				Females			
	Employed persons	Unemployed persons	Activity rate	Unem. rate	Employed persons	Unemployed persons	Activity rate	Unem. Rate	Employed persons	Unemployed persons	Activity rate	Unem. Rate
TOTAL	19,564.6	3,304.3	58.61	14.45	10,653.1	1,574.1	64.45	12.87	8,911.5	1,730.2	53.08	16.26
Andalucía	3,090.3	834.3	56.60	21.26	1,781.2	389.0	63.96	17.92	1,309.1	445.4	49.54	25.39
Aragón	577.0	72.1	59.11	11.11	315.7	34.6	65.00	9.88	261.3	37.5	53.44	12.54
Asturias, Principado de	390.6	57.6	50.27	12.86	202.6	26.4	54.16	11.55	188.0	31.2	46.77	14.23
Baleares, Illes	556.1	68.1	62.88	10.91	300.9	38.6	68.91	11.38	255.2	29.5	56.94	10.36
Canarias	913.4	228.2	60.96	19.99	490.2	116.6	65.79	19.22	423.2	111.6	56.28	20.87
Cantabria	241.6	25.9	54.29	9.68	133.8	12.2	61.25	8.35	107.8	13.7	47.77	11.28
Castilla y León	990.8	125.1	54.49	11.21	549.9	59.6	60.48	9.78	440.9	65.5	48.69	12.93
Castilla-La Mancha	830.1	160.0	59.06	16.16	487.4	65.8	65.92	11.89	342.6	94.2	52.18	21.56
Cataluña	3,391.1	451.4	61.67	11.75	1,797.8	220.1	66.81	10.91	1,593.4	231.3	56.83	12.67
Comunitat Valenciana	2,062.7	344.1	58.07	14.30	1,140.5	163.8	64.42	12.56	922.1	180.2	52.01	16.35
Extremadura	381.1	114.4	55.29	23.10	224.2	51.1	62.14	18.56	156.9	63.4	48.59	28.77
Galicia	1,088.1	148.9	52.99	12.04	568.3	72.7	57.42	11.34	519.8	76.2	48.93	12.79
Madrid, Comunidad de	3,035.6	396.2	62.94	11.54	1,567.8	195.1	68.29	11.07	1,467.8	201.1	58.14	12.05
Murcia, Región de	604.6	113.7	59.56	15.83	349.6	47.9	66.39	12.05	255.0	65.8	52.83	20.50
Navarra, Comunidad Foral de	284.8	31.6	59.33	9.99	150.1	15.0	62.90	9.11	134.8	16.6	55.86	10.96
País Vasco	930.6	98.7	56.35	9.58	485.3	49.3	60.97	9.22	445.3	49.3	52.08	9.98
Rioja, La	138.8	15.9	59.31	10.30	73.5	7.6	63.41	9.37	65.4	8.4	55.38	11.33
Ceuta	27.7	8.8	55.40	24.02	16.6	3.9	63.87	18.97	11.1	4.9	47.30	30.53
Melilla	29.7	9.3	62.03	23.85	17.8	4.7	69.46	20.81	11.9	4.6	54.14	27.99

* Data below 5,000 are subject to strong variations, due to sampling errors

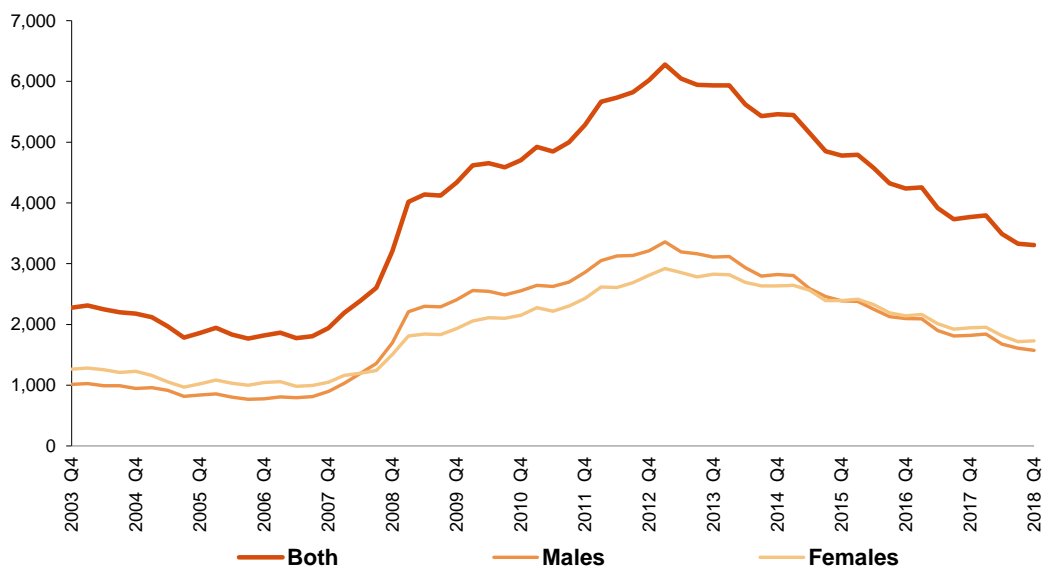
EA PS - (ANNEX TO TABLES) Q4 2018 (7/7)

Employed and Unemployed by sex EAPS
Fourth Quarter 2018

Employed. Thousands



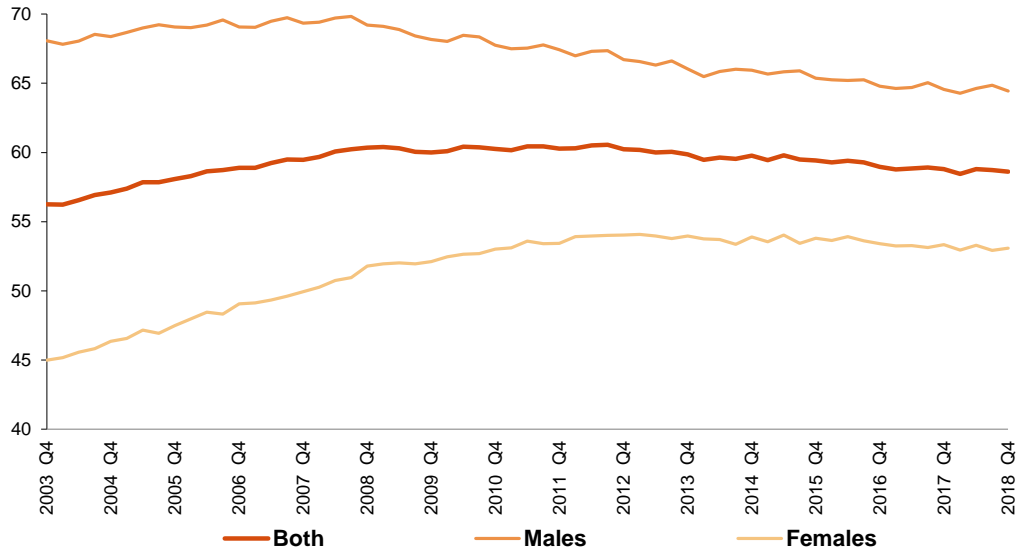
Unemployed. Thousands



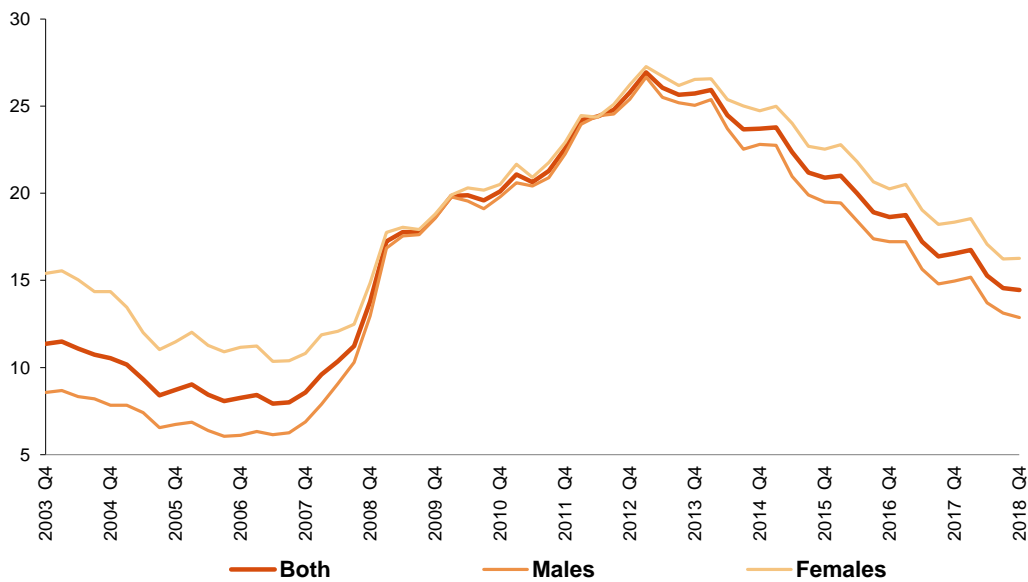
Activity and unemployment rates by sex
Fourth Quarter 2018

EAPS

Activity rate. Percentage



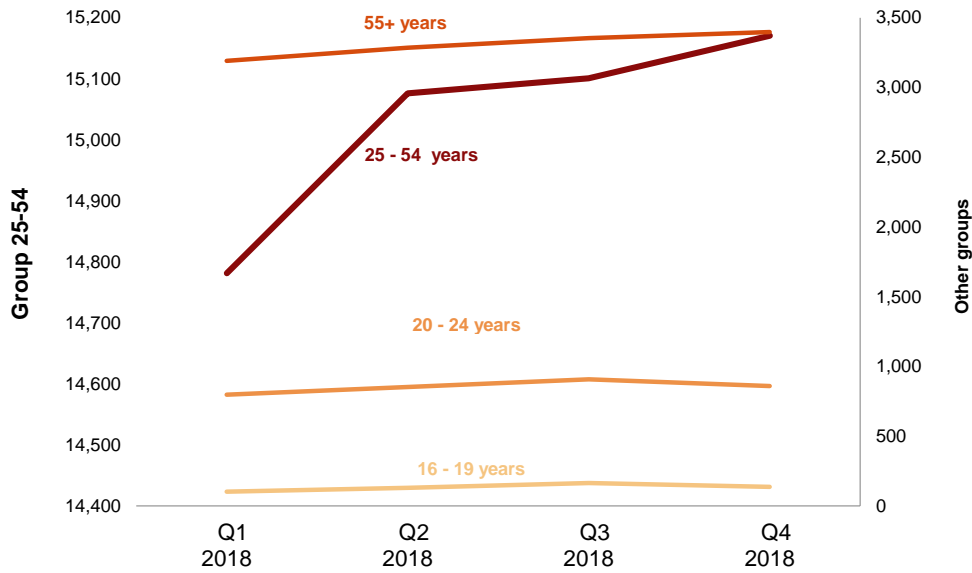
Unemployment rate. Percentage



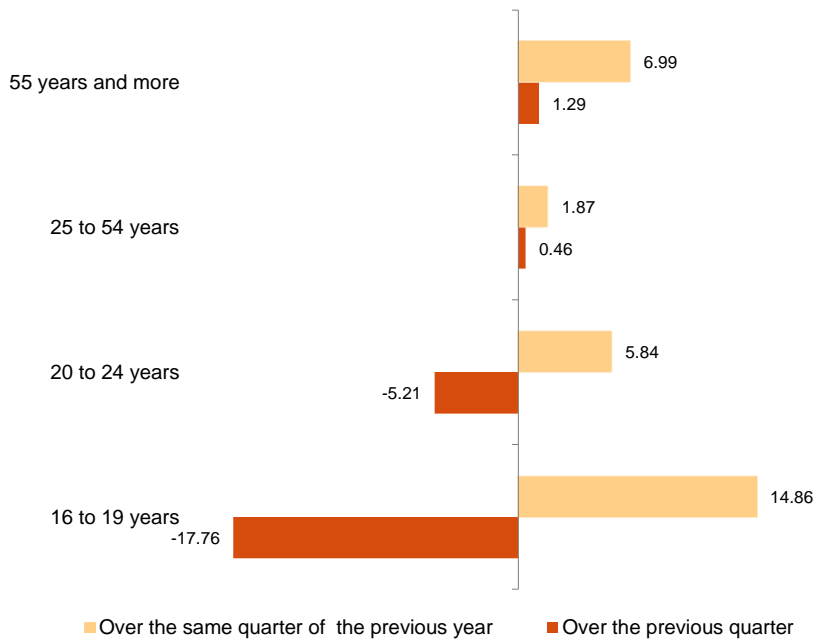
Employment by age
Fourth Quarter 2018

EAPS

Employment. Thousands



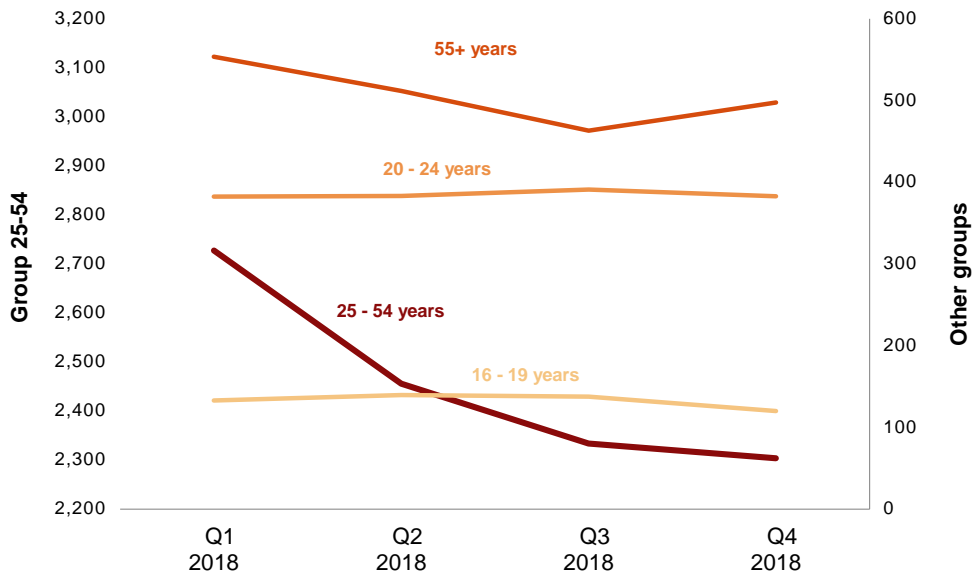
Variation of employment. Thousands



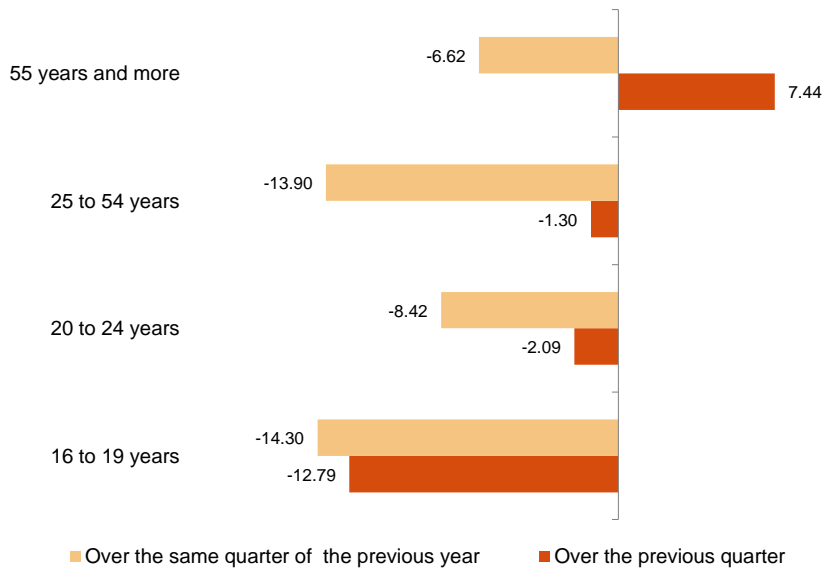
Unemployment by age
Fourth Quarter 2018

EAPS

Unemployment. Thousands



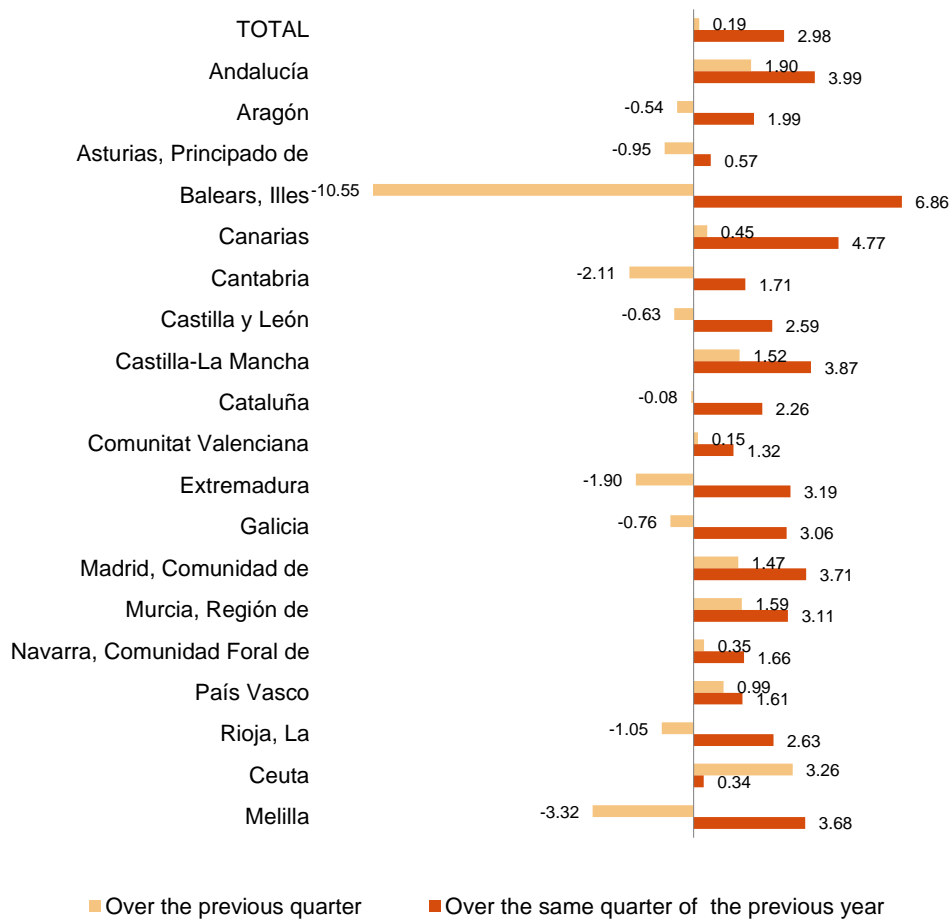
Variation of unemployment. Thousands



Fourth Quarter 2018

EAPS

Variation of employment. Percentage



Unemployment rate Percentage
(Spain= 14.45)

